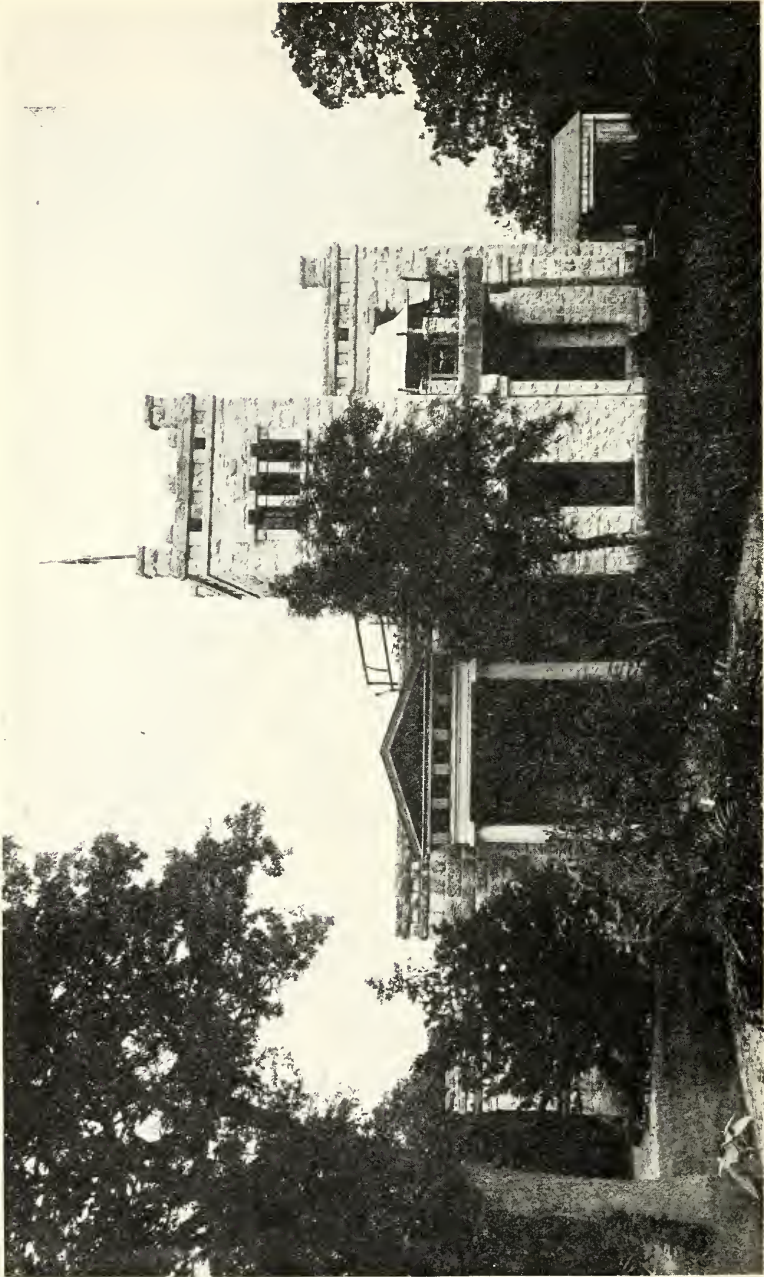


## THE TEXAS FINE ARTS ASSOCIATION.

Under the auspices of Mrs. Joseph B. Dibrell, of Austin, Texas, the Texas Fine Arts Association has been formed, and many prominent people of Texas



ELISABET NEY AS A GIRL.



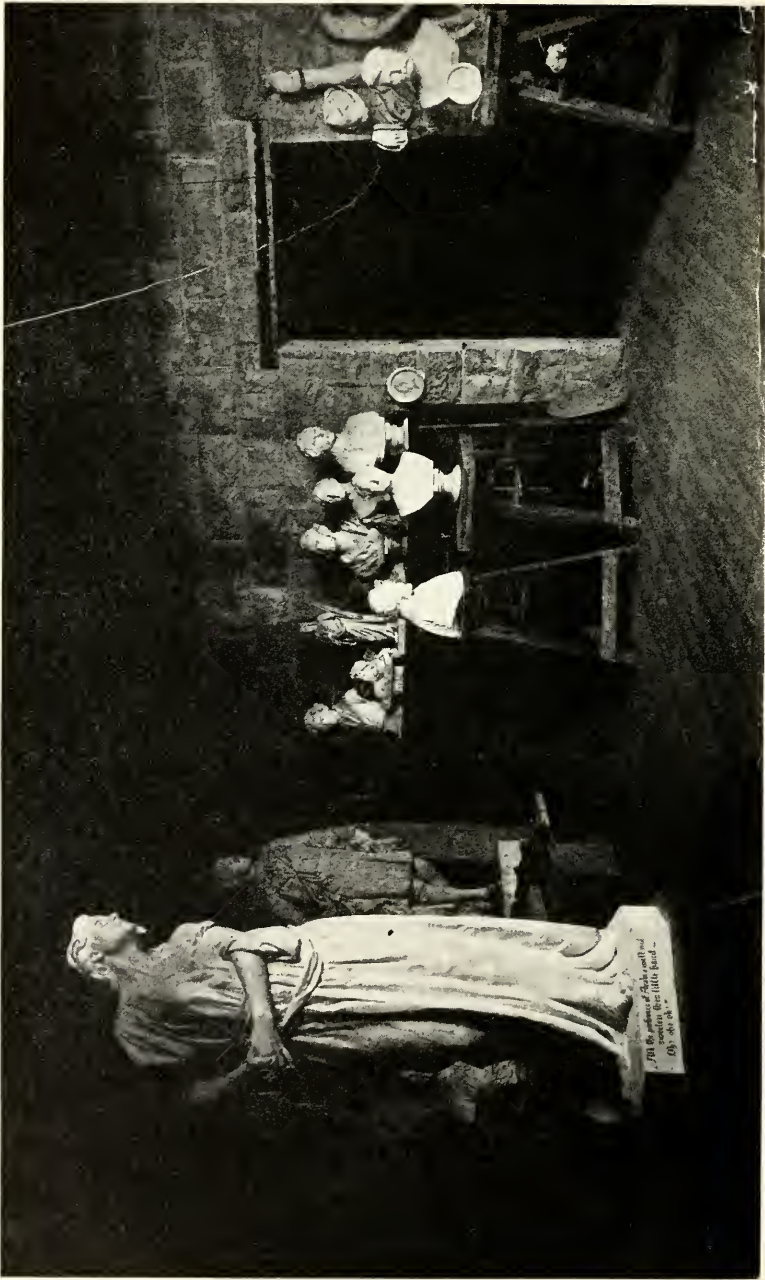
ELISABET NEY'S STUDIO AT AUSTIN, TEXAS.

and Washington have joined it. The founder, Mrs. Dibrell, was a personal friend of the late Elisabet Ney, and has bought the studio of that prominent artist from the estate of her late husband, Dr. Edmund Montgomery, a physiologist and philosopher. Our readers may remember that she was a niece of Marshal Ney, the famous general of Napoleon I, known as the most courageous and most faithful of his paladins. Further particulars of interest concerning Elisabet Ney may be found in *The Open Court*, Volume XXI, pages 592 ff., and concerning Dr. Montgomery in *The Open Court*, Volume XXV, pages 381 f. An aftermath concerning Dr. Montgomery's philosophy appears in the current number of *The Monist* (April, 1912).



DR. EDMUND MONTGOMERY.

The article on Elisabet Ney is fully illustrated, but in the meantime we have received some additional pictures which we here reproduce. In addition to the two portraits in later years, we offer here a picture which shows Miss Ney in her younger years. Her broad forehead with intelligent eyes show her unusual talent during the time when she chiseled busts of several kings and prominent men, among whom we mention Bismarck, Liebig and also the great pessimist and woman hater, Schopenhauer. Her last great work was *Lady Macbeth*, also here reproduced, which expresses the physiognomy of an agonized conscience with exquisite artistic skill. The portrait of Dr. Montgomery shows him at the prime of his life with his beautiful thoughtful features and his full white curly hair.



INTERIOR OF STUDIO. LADY MACBETH IN THE FOREGROUND.

... For the sake of Macbeth will not  
suffer this little hand ...  
O! ...