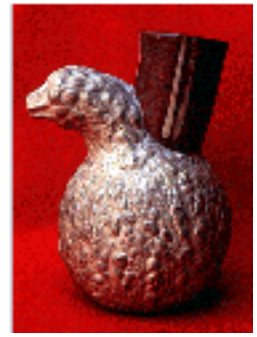




Ethnobotanical Leaflets



Editorial Policy

Letters to the editors, articles and interviews by the readership are welcomed for publication in Economic Botany Leaflets. Pieces should be in good taste and will be included at the discretion of the editors.

Unique to this publication is the Policy Corner featuring articles and editorials on technical methods, government decision making, funding and other areas within and surrounding economic botany.

Please send your ideas and contributions to:

mkvzant@siu.edu

Co-editor Economic Botany Leaflets

MKVZant@siu.edu

Department of Plant Biology

M/C 6509

Southern Illinois University

Carbondale, IL 62901-6509

[Return to Home Page](#)

Southern Illinois University Carbondale / Ethnobotanical Leaflets /

URL: <http://www.siu.edu/~ebl/>

Last updated: 17-May-98 / mkvz