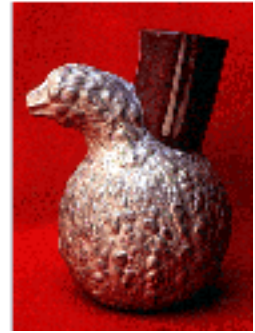




Ethnobotanical Leaflets



New Ethnoecology Position at University of Hawaii

Notice sent in by Will McClatchey

Dear SEB members,

We are happy to announce that the University of Hawaii at Manoa is seeking to hire a new faculty member with expertise in the area of ethnoecology. The position is part of a larger effort to integrate the teaching and research activities of several departments into an ethnobiology program with certificates and degrees in ethnobotany, ethnobiology, ethnoecology, and ethnopharmacology. Current ethnobiology faculty include: Al Chock, Nina Etkin, Will McClatchey, Mark Merlin, and Lyndon Wester. Tentative closing date is September 15th, 2000.

ETHNOECOLOGIST: The Department of Botany, College of Natural Sciences, invites applicants for an Assistant Professor, full-time, tenure track, nine-month position to begin January 3, 2001, pending position clearance and availability of funds. The department seeks an individual who will develop an outstanding research program and provide leadership in ethnoecology and related fields that emphasize studies of cultural interactions with botanical environments. Primary teaching responsibilities will include an introductory course in the undergraduate Ethnobiology curriculum, a lower division course in Botany or Biology, and an advanced course in the area of his/her research specialization. Secondly, the individual will be expected to interact with the Ecology, Evolution, and Conservation Biology program through teaching and/or research activities. Minimum qualifications are a Ph.D. in botany, an appropriate field of biological science or its equivalent; demonstrated teaching ability; demonstrated scholarly achievements. Desirable qualifications include postgraduate training and field-oriented research in Pacific or tropical ethnoecology, the ability to operate in a multi-cultural environment, and significant knowledge of, or interest in, traditional land use systems of the Pacific. Minimum annual salary: \$34,644 (salary negotiable based on experience and qualifications). Submit vita, statements of teaching philosophy and research interests, reprints of up to three publications, and names and contact information for three or more references, including mail and e-mail addresses and phone numbers to: Chairperson, Department of Botany, 3190 Maile Way, University of Hawaii at Manoa, Honolulu, Hawaii 96822-2279. Inquires may be made to botany@hawaii.edu or FAX 808-956-3923.

More information may be found at: <http://www.botany.hawaii.edu>. The University of Hawaii at Manoa

is an Affirmative Action/Equal Opportunity Employer. Women and members of Minority Groups are strongly encouraged to apply.

[Return to Home Page](#)

SIUC / College of Science / Ethnobotanical Leaflets /

URL: <http://www.siu.edu/~eb1/job.htm>

Last updated: 15-May-2000 / du