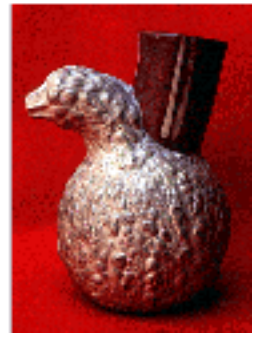




## Ethnobotanical Leaflets



### Picture Gallery

*Featuring the Photos of Carlos Ochoa, Lima, Peru*



**Left:** Kernels of maize cultivar *sacsa sara* from Cusco, Peru. **Right:** The sweet, edible roots of yacón (*Polymnia sonchifolia*) contain inuline and inuline-related compounds, but not starch. Unlike the roots of other edible species, these are commonly eaten raw. The yellowish-fleshed variety shown here comes from the Cajamarca market.



**Left:**Kiwicha (*Amaranthus caudatus*). The typical variety of this pseudo-grain species has drooping, dark red cat-tail like inflorescences. The seeds are commonly popped or ground into flour.**Right:**Cut fruit of *Passiflora quadrangularis* showing the whitish mesoderm and the many small seeds. The fruits of this species are the largest of the genus.

[Return to Home Page](#)

---

*Southern Illinois University Carbondale / Ethnobotanical Leaflets /*

URL: <http://www.siu.edu/~ebf/>

Last updated: 13-January-99 / du