

1986

1986-1987 Southern Illinois University Bulletin Carbondale Campus (School of Law Catalog)

Southern Illinois University Carbondale

Follow this and additional works at: http://opensiuc.lib.siu.edu/ua_bcc

Recommended Citation

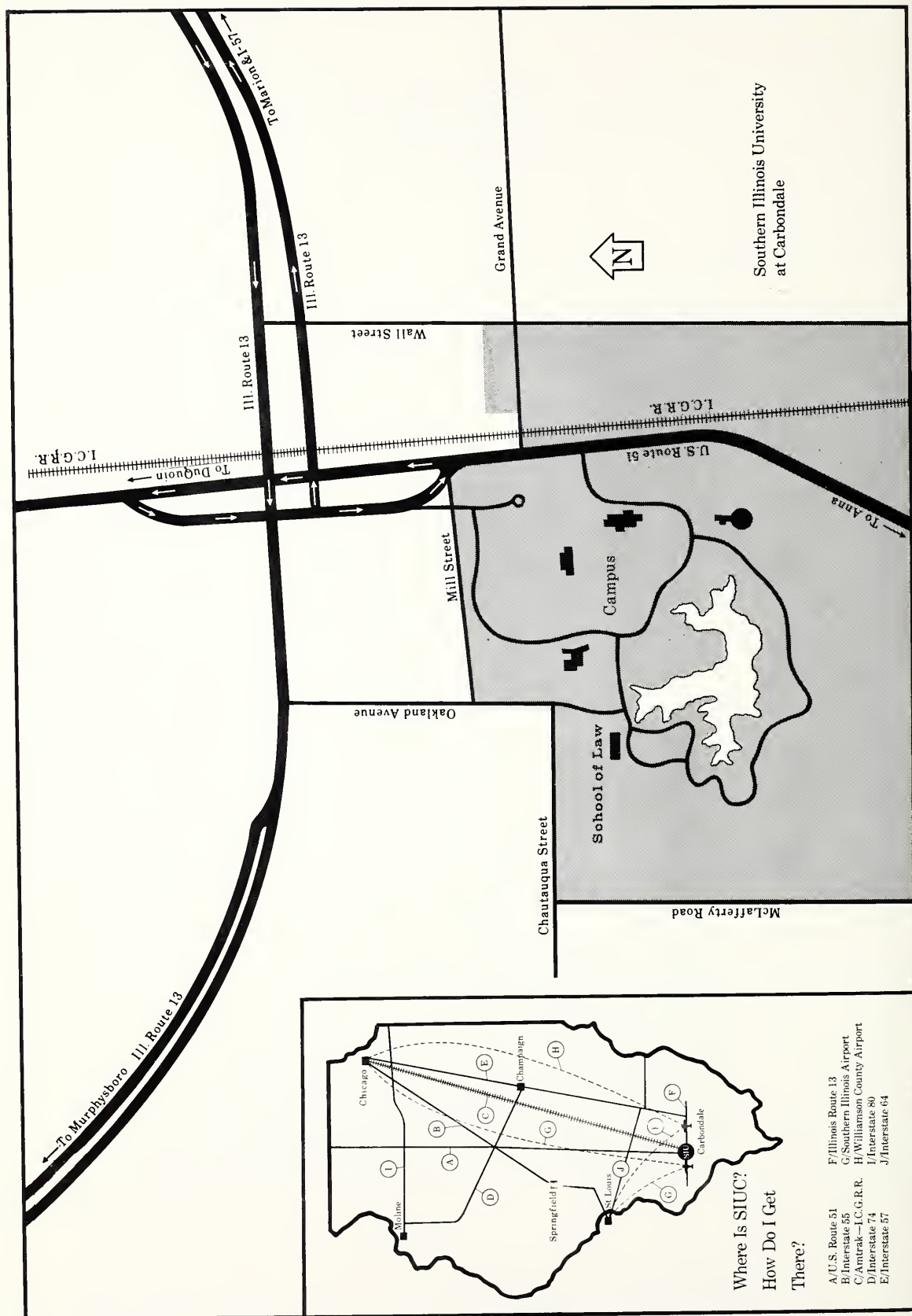
, . "1986-1987 Southern Illinois University Bulletin Carbondale Campus (School of Law Catalog)." (Jan 1986).

This Article is brought to you for free and open access by the University Archives at OpenSIUC. It has been accepted for inclusion in SIU Bulletins and Course Catalogs by an authorized administrator of OpenSIUC. For more information, please contact opensiuc@lib.siu.edu.

Bulletin



1986-87
School of Law
Catalog



Where Is SIUC?
How Do I Get There?

- A/U.S. Route 51
- B/Interstate 55
- C/Amtrak—I.C.G.R.R.
- D/Interstate 74
- E/Interstate 57
- F/Illinois Route 13
- G/Southern Illinois Airport
- H/Williamson County Airport
- I/Interstate 80
- J/Interstate 64



Southern
Illinois
University
at Carbondale

Bulletin

1986-87
School of Law
Catalog

**Southern Illinois University
at Carbondale Bulletin (USPS 506-080)**

Volume 28, Number 3, August 1986

Second-class postage paid at Carbondale, Illinois 62901. Published by Southern Illinois University at Carbondale, Carbondale, Illinois 62901, four times per year, in June, July, August, and October. POSTMASTER: Send address changes to Academic Publications c/o University Publications, Southern Illinois University at Carbondale, Carbondale, IL 62901.

This Issue

The School of Law Catalog covers in detail questions concerning the School of Law program at Southern Illinois University. (It supersedes Vol. 27, No. 4, of the *Southern Illinois University at Carbondale Bulletin*.) All statements in this catalog are announcements of present policies and are subject to change at any time without prior notice. They are not to be regarded as offers to contract.

The following publications may be obtained free from University Publications, Southern Illinois University, Carbondale, Illinois 62901.

Graduate Catalog
Undergraduate Catalog
School of Law Catalog
Schedule of Classes (fall, spring, or summer)

Southern Illinois University is an Equal Opportunity Affirmative Action institution in accordance with civil rights legislation and does not discriminate on the basis of race, religion, national origin, sex, age, handicap, or other factors prohibited by law in any of its educational programs, activities, admission, or employment practices. Concerns regarding this policy should be referred to the Affirmative Action Office, Southern Illinois University, Anthony Hall, Room 104, telephone 618-536-6618.

Table of Contents

<i>Board of Trustees and Officers of Administration</i>	iv
<i>School of Law Calendar</i>	v
<i>A Welcome from the Dean</i>	vi
<i>University General Information</i>	1
History	1
Location	2
Campus	2
1 School of Law	3
History	3
Purposes	3
Facilities	4
Library	5
Curriculum	6
First Year	6
Second and Third Years	6
Summer School	8
Admission	8
Admission of Handicapped Students	9
Pre-Law Study	9
Degree Requirements	9
Residence Requirements	9
Limitation of Course Hours	10
Attendance and Withdrawal	10
Examinations	10
Poor Scholarship Rule	10
School of Law Academic Rules	10
Honors	10
Graduating Honors	10
Tuition and Fees	10
Financial Aid	11
Scholarships and Awards	11
Housing	12
Honor Code	12
Clinical Program	12
Law Journal	13
Legal Argumentation	13
Concurrent Degree Programs	14
Student Organizations	14
Placement Services	14
2 Faculty and Staff	15
Faculty	15
Clinical Program Staff	24
Law Library Staff	25
Administrative Staff	26

Board of Trustees and Officers of Administration

Board of Trustees of Southern Illinois University	<i>Term Expires</i>
Harris Rowe, <i>Chairman</i> , Jacksonville	1989
A. D. Van Meter, Jr., <i>Vice-Chairman</i> , Springfield	1987
Carol Kimmel, <i>Secretary</i> , Moline	1989
Barnard B. Birger, Collinsville	1987
Ivan A. Elliott, Jr., Carmi	1991
William R. Norwood, Rolling Meadows	1989
George T. Wilkins, Jr., Edwardsville	1991
Edward G. Lance, (Student Trustee) Carbondale	1987
Debbie Schlautman, (Student Trustee) Edwardsville	1987
Sharon K. Holmes, <i>Executive Secretary of the Board of Trustees</i>	

Officers of Administration, The Southern Illinois University System

Lawrence K. Pettit, *Chancellor*
 James M. Brown, *Vice-Chancellor*
 Howard Webb, *Vice-Chancellor for Academic Affairs*
 Thomas C. Britton, *Executive Assistant to the Chancellor and
 System Administrative Officer*
 Nathaniel Felder, *Director of Planning for Computing*
 C. Richard Gruny, *Board Legal Counsel*
 Elaine Hyden, *System Internal Auditor*
 L. Stuart Robson, *Assistant Financial Officer*
 Mary Walker, *Assistant to the Chancellor*
 Donald W. Wilson, *System Financial Officer and Board Treasurer*

Officers of Administration, Southern Illinois University

Albert Somit, *President*
 John C. Guyon, *Vice-President for Academic Affairs and Research*
 Clarence G. Dougherty, *Vice-President for Campus Services*
 Charles Hindersman, *Vice-President for Financial Affairs*
 Bruce R. Swinburne, *Vice-President for Student Affairs*
 John H. Baker, *Executive Director for Planning and Budgeting*
 Jack Dyer, *Executive Director of University Relations*
 Richard G. Higgerson, *University Legal Counsel*
 William Baily, Jr., *Assistant to the President for Affirmative Action*

Officers of Administration, School of Law

Rennard J. Strickland, *Dean*, School of Law
 C. Peter Goplerud, *Associate Dean*, School of Law
 Scott Nichols, *Assistant Dean, Director of Admissions*, School of Law

School of Law Calendar

Fall Semester, 1986

Orientation

Semester classes begin

Labor Day holiday

Thanksgiving vacation

Last day of classes

Final examinations

Friday, August 22-Sunday, August 24

Monday, August 25

Monday, September 1

Saturday, November 22-Sunday,
November 30

Monday, December 8

Wednesday, December 10-Saturday,
December 20

Spring Semester, 1987

Semester classes begin

Martin Luther King Jr.'s
birthday holiday

Presidents' Day holiday

Spring vacation

Last day of classes

Final examinations

Commencement

Wednesday, January 14

Monday, January 19

Monday, February 16

Saturday, March 14-Sunday, March 22

Friday, May 1

Monday, May 4-Friday, May 15

Sunday, May 17

Summer Session, 1987

Classes begin

Independence Day holiday

Last day of classes

Final examinations

Commencement

Monday, June 15

Friday, July 3

Monday, August 3

Wednesday, August 5-Friday, August 7

Saturday, August 8

A Welcome From the Dean

As you enter the front door of the Southern Illinois University law school, there is a quotation carved on a marble slab, "Justice is a human enterprise." At Southern Illinois we try our best to keep the study of law both a human and a humane enterprise. About this time last year, I accepted the invitation of Southern Illinois University to become dean of the School of Law. The things I found most attractive about the place are those which I think you will enjoy the most.

Ours is a friendly law school with a strong opportunity for individual achievement. We have one of the two or three best faculty-student ratios of any law school in the country. This means that the law school has an extremely personal feel to it. As you may know, all of our law students are issued a key to the building which means that you can come and go from the building, and more particularly from the library, at any time during the day or night. Furthermore, the small size of the class (we seek to admit one hundred in each of our entering classes), means that you will have your first year classes with a group of approximately 50 other students and that your writing section will be in a group of 15 or 20 students. We have a Distinguished Speakers Program which will interest you, and the school is planning new programs to be offered in cooperation with the university's School of Medicine.

We take great pride in the success of our graduates. We have one of the best bar passage rates in the nation. The placement of our law graduates in firms and with governmental agencies is particularly fine. I know you will be extremely pleased with the many opportunities which the study of law will open for you.

We hope that you will join us at Southern Illinois University's law school. I believe you would find our law school a healthy environment in which to tackle the challenge of legal education. I know you will find law school a rewarding experience.

A handwritten signature in black ink, reading "Rennard Strickland". The signature is fluid and cursive, with the first name "Rennard" starting with a large, looping 'R' and the last name "Strickland" following in a similar style.

Rennard Strickland
Dean and Professor

University General Information

History

The Southern Illinois University System is a senior public university system comprising two diverse institutions—Southern Illinois University and Southern Illinois University at Edwardsville—and serving approximately 33,000 students.

Chartered in 1869, Southern Illinois Normal University served as a teacher-training institution until 1943, when the school was transformed into a university, giving official recognition to the area's demand for diversified training and service. SINU became Southern Illinois University in 1947, and in 1949 began offering off-campus academic courses in the Metropolitan East St. Louis area, an initiative which led to the eventual development of a separate, distinctive institution in Edwardsville.

The mission and scope of the Southern Illinois University System are highly complex and emphasize a commitment to fine quality in education. As the Southern Illinois University System has grown and flourished, its constituent universities have developed programs of instruction, research, and public service which have attracted and served students, faculty, and staff not only from the region but from throughout the state of Illinois, the nation, and from overseas as well.

The universities within the Southern Illinois University System offer a broad range of academic programs at the associate, baccalaureate, master's, doctoral, and professional levels. In addition to the many undergraduate degree programs offered, the system supports more than sixty academic programs which lead to the master's degree and twenty-two which lead to the doctorate. The professional schools are designed to provide first-rank health and legal graduates trained to meet the particular needs of the people of Illinois. Southern Illinois University operates a School of Law in Carbondale and a School of Medicine headquartered in Springfield, the first year of which is offered in Carbondale; Southern Illinois University at Edwardsville operates a school of nursing in Edwardsville and a School of Dental Medicine in Alton. More than 6,000 of the 33,000 students currently enrolled are in graduate and professional programs.

The instructional, research, and service missions of the two universities reflect the needs of the geographic areas in which they are located. The system is also committed to serving state, national, and international needs, a commitment reflected in educational activities located away from the main campuses in communities throughout the state and nation. Countries throughout the world experience this commitment through research and training exchanges and student exchange programs.

The Southern Illinois University System is governed by a nine-member board of trustees, which sets policy that enables the institutions to carry out

established objectives. The chancellor of the Southern Illinois University System is the chief executive officer of the system and is the primary link between the universities and the Board of Trustees. The university presidents report directly to the chancellor and are responsible for the internal operations of their institutions.

Location

The city of Carbondale is approximately 100 miles southeast of Saint Louis, Missouri, in Jackson County, the western border of which is the Mississippi River. Some of the most rugged and picturesque terrain in Illinois lies south of Carbondale. Sixty miles to the south is the historic confluence of the Ohio and Mississippi rivers; the two rivers form the border of the southern tip of Little Egypt, the name given to the 14 southernmost counties in Illinois. The region immediately surrounding Carbondale is noted for its large peach and apple orchards. Two state parks and four lakes are located within 10 miles of the campus and much of the area is a part of the Shawnee National Forest.

Campus

The University campus, comprising more than 3,290 acres immediately south of the city of Carbondale, includes a 981-acre developed portion with woods and a lake as a site for academic buildings and residence halls. The buildings are located in wooded tracts along two circular shaped campus drives, named for Lincoln and Douglas. Two beautiful features, located near the center of the campus, are a wooded tract preserved in the tradition of native forests of Southern Illinois and several buildings which formed the original campus a century ago.

1

School of Law

History

The School of Law at Southern Illinois University, Carbondale, Illinois, began instruction in law in the fall of 1973. Hiram H. Lesar, for whom the law building is named, was the founding dean and served until 1980. Dan Hopson served as dean until his death in 1985, at which time Rennard J. Strickland was appointed. The first class graduated in 1976, and there are still fewer than 1,000 alumni.

The school is fully accredited by the American Bar Association and is a member of the Association of American Law Schools.

Twenty-three full-time faculty members are involved in research and publication in addition to their teaching duties. A dynamic, personalized educational environment is the result of a student body of 300 and a faculty/student ratio of 1/13. The group is small enough so that faculty and students can know each other but large enough to justify the variety of courses that should be available in a modern law school. Two visiting professors and six adjunct professors add additional depth to the faculty and curriculum.

Purposes

The main purpose of the School of Law is to train lawyers who will be competent to practice law now and in the future. In addition to specific legal rules, the student must learn analytic skills, research techniques, and the basic legal principles and policies underlying the current applications of those rules. He or she should also learn the basic skills of advocacy, counseling, and negotiation.

The second purpose of the School of Law stems from recognition of the social fact that lawyers are expected to provide a large part of the leadership in a wide spectrum of American life. In general terms this means that lawyers must perform two functions which go beyond rendering competent legal service. They must be prepared to serve in a "watch-dog" capacity with respect to the proper functioning of American institutions, and they must be prepared to participate in "making law."

The second purpose of the school, then, is to assure that the leadership function performed by lawyers is carried out well. For this purpose the lawyer requires not only the whole range of skills and knowledge needed for the practice of law, but also an understanding of our institutions and a sensitivity to potential conflict areas.

The third purpose of the school—which is essential to the fulfillment of the other two—is to instill in its students a proper conception of the professional

responsibilities of the lawyer and the organized bar, an understanding of the nature and role of the legal profession, and knowledge and appreciation of the ethical principles by which all lawyers are bound.



Facilities

The Lesar Law Building, dedicated in 1982, is a contemporary structure situated on the western edge of the campus near the lake. The building houses classrooms, student lounges, administrative and faculty offices, and the library, as well as a courtroom and large in-house clinic facilities.

Library

The law library provides all resources needed for research by faculty and students in a superior law school. The new law building includes a 41,000-square-foot library that houses the collection, study spaces, and staff. Services, ranging from expert legal reference to computer-assisted information retrieval, are offered to the law school community.



Law books and law-related information accessible through other media, such as videotapes, audiotapes, microform, or computers, are the core of the law library. The law library holds almost 250,000 volumes—a collection well above the median academic law library size and rich in its variety of titles. This mature library resource includes over 310,000 microform units, the equivalent of close to 100,000 physical books.

Not so easily quantifiable are the library's computer-assisted research systems (LEXIS and Westlaw), and its computer-assisted library technical processes.

Several sophisticated approaches, including a superior card catalog, on-line and conventional indexes, and the interpretive services of law-trained librarians, provide access to the fully-cataloged and classified collection. The library has been a selective federal government depository library since 1978, and an Illinois state depository library since 1982. Government publications are fully integrated into the cataloged collection and available to both the law school community and the public.

The physical features of the law library combine a serene decor with an eminently functional arrangement. Ample seating at both carrels and tables is provided for library users. The library's design includes access and work stations for patrons in wheelchairs. The relationship of library service centers to library users and to the collection is a model for efficient and immediate access to library materials.

The resources of over 1,650,000 volumes in the University library also are readily available to law students, to supplement the strong, well-staffed law school library. A sophisticated interlibrary loan system provides access to materials held in other major research libraries around the country.

Curriculum

FIRST YEAR

The first-year curriculum is required. It differs from the usual first-year law school curriculum in that Legal Writing and Reasoning is taught in small sections by full-time faculty members.

<i>First Semester</i>		<i>Second Semester</i>	
<i>Course</i>	<i>Hours</i>	<i>Course</i>	<i>Hours</i>
Contracts I	3	Contracts II	3
Property I	3	Property II	3
Torts I	3	Torts II	2
The Legal Profession	3	Civil Procedure I	3
Legal Research I: Sources		Criminal Law	3
and Methodology	1	Legal Argumentation	2
Legal Writing and Reasoning	2		

SECOND AND THIRD YEARS

The curriculum for the second and third years remains flexible. Constitutional Law, Legal Research II, the Legal Profession, and the Senior Writing Seminar are the currently required courses. Changes may be made in requirements in the future.

The curriculum contains a readily identified emphasis on environmental law which is unique in the state of Illinois. Microcomputers, which are available to students as part of the curriculum and in clinic work, provide valuable training for the practice of law.

A Senior Writing Seminar requires a paper of the quality of a law journal comment. *SIU Law Journal* members are not required to take a seminar, since the law journal work is of equivalent stature.

Up to 6 semester hours of credit for course work taken in the Graduate School may be applied, with permission of the deans of both the Graduate School and the School of Law, toward the number of hours required for the J.D. degree and toward the residence semester requirement. A student must earn a grade of *B* or better in such work for School of Law credit to be given; this letter grade will be reflected on a student's School of Law record, but will not be used to compute the law grade-point average.

The total of course work permitted in each of the areas of clinical law, moot court competition, and law review may not exceed 6 semester hours.

A list of second- and third-year courses normally offered during the academic year follows.

<i>Course</i>	<i>Hours</i>	<i>Course</i>	<i>Hours</i>
Administrative Law	3	Future Interests	3
Admiralty Law	2	Graduate Courses	up to 6
Advanced Civil Procedure	3	Health Policy Law	3
Advanced Moot Court*	1-4	Immigration Law	3
Agency and Partnership	2	Independent Research and Writing	1-3
Agricultural Law	2	Insurance	3
American Indian Law	2	International Law	3
Anglo-American Legal History	3	Jurisprudence	3
Antitrust	3	Juvenile Justice System	2
Bioethics and the Law	3	Labor Law I	2
Civil Procedure II	3	Labor Law II	2
Client Interviewing and Counseling*	3	Land Use Planning	3
Commercial Law I	3	Law and Medicine	3
Commercial Law II	4	Law Journal*	1-6
Conflict of Laws	3	Legal Clinic* (see p. 11)	1-6
Constitutional Law: 14th Amend.**	3	Legal Profession**	2
Constitutional Law: 1st Amendment Rights	3	Legal Research II**	1
Constitutional Law: Governmental Powers	3	Mental Health Law	2
Consumer Protection	3	Mining Law	3
Corporations	3	Oil and Gas Law	3
Creditors' Rights	4	Pre-Trial Advocacy	3
Criminal Procedure: Limits on Investigatory Power	3	Preservation of Environmental Amenities	2
Criminal Procedure: Trial and Pre-Trial Practice	3	Products Liability	3
Delivery of Legal Services	3	Real Estate Finance and Development	3
Economic Regulation of Business	3	Remedies	3
Energy Regulation	3	Securities Regulation	3
Environmental Policy and Pollution Control	3	Special Problems in Taxation	3
Estate and Gift Taxation	3	Sports Law	2
Estate Planning	3	State and Local Government Law	3
Evidence	4	Statutory Interpretation	3
Family Law	3	Transnational Business Transactions	3
Federal Courts	3	Trial Advocacy*	3
Federal Income Taxation	3	Trusts and Estates	4
Federal Income Taxation of Business Enterprises	3	Water Law	3

*Enrollment Limited

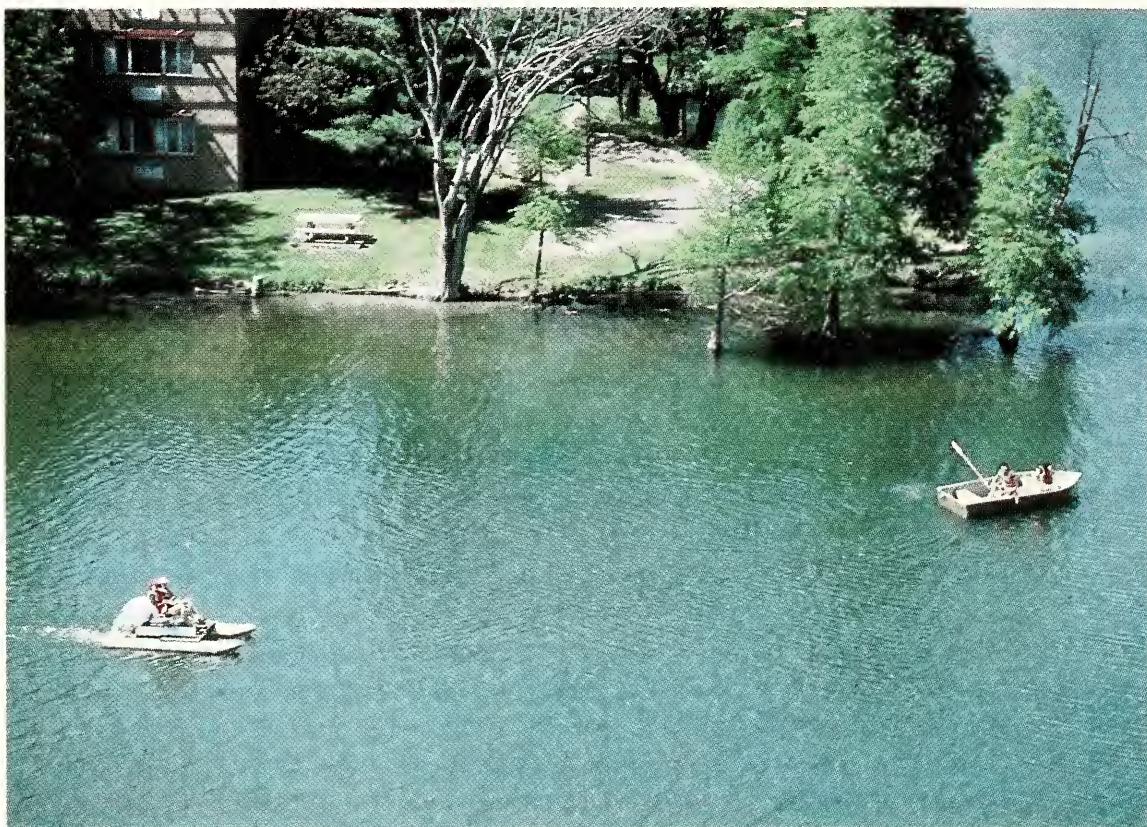
**Required

Senior Writing Seminars may include the following:

Business Law	International Treaty Legislation
Civil Rights	Mental Health
Commercial Law	Natural Resources Law
Constitutional Law	Products Liability
Criminal Law	Property
Energy	Sports Law
Housing Discrimination	Tax Policy
International Law	Torts

Summer School

The law school offers a limited summer school program with courses established each year on an ad hoc basis. New students are not admitted in the summer.



Admission

To be admitted as a candidate for the Juris Doctor degree, an applicant must present a bachelor's degree and demonstrate capacity for the study of law by a satisfactory undergraduate record and satisfactory performance on the Law School Admission Test (LSAT). Forms for applying for the LSAT and for admission to the law school may be obtained from the Office of Admissions, School of Law, Southern Illinois University, Carbondale, Illinois 62901.

The LSAT is administered on a nationwide basis by the Law School Admission Services, Box 2000, Newtown, PA 18940, and is offered on the SIU campus four times each year. The test administration dates no later than September or December of the applicant's final year of undergraduate study are preferred. LSAT scores which are more than three years old will not be considered by the admissions committee.

Applicants must also register with the Law School Data Assembly Service (LSDAS) by completing the form found in the LSAT bulletin of information and returning it to the Law School Admission Services. Applicants must have transcripts sent to LSDAS by the registrar of each college and professional or graduate school attended. Test scores and evaluations of transcripts are reported to applicants and to the law schools they designate. Applicants should indicate on the LSAT/LSDAS matching forms that their scores and evaluations are to be reported to the Southern Illinois University School of Law. It is not necessary that application for admission to the School of Law be made before taking the test or registering with LSDAS.

Applications for admission to the school may be filed any time after September 1, but applicants are strongly encouraged to file their applications prior to February 1. There is a \$15.00 application fee.

An applicant who is admitted is required to make a nonrefundable tuition deposit of \$100 by April 1, unless accepted later, when several weeks are allowed. This deposit will be credited against the first semester's tuition and fees.

Admissions are made without regard to race, religion, sex, national origin, age, handicap, or other factors prohibited by law. The law school has an active affirmative action program and participates in the Council on Legal Education Opportunity (CLEO) program.

Admission of Handicapped Students

The School of Law maintains a strong commitment to make all services, programs, and activities available to students with disabilities. Our new facility provides access for those in wheelchairs or with limited mobility. Both the campus and the city of Carbondale are accessible to students who use wheelchairs, and to those who are semi-ambulatory, visually handicapped, hearing-impaired, or otherwise disabled. The University Housing Office provides modified housing in the Thompson Point residential area and in the family housing areas.

The law school will gladly help handicapped students make arrangements to meet special needs. Students who seek further information should consult the Admissions Office or the University's Office of Disabled Student Services.

Pre-Law Study

The law school does not require any particular subjects or specific course of study for admission. A broad liberal arts education is better preparation for the study of law than specialized subjects closely related to the law.

As the principal tool of the lawyer is the art of expression, and the importance of the study of English cannot be over-emphasized, the pre-law student should acquire facility in the communication of ideas, both oral and written.

Degree Requirements

A candidate for the Juris Doctor (J.D.) degree must satisfy the entrance requirements, fulfill the residence requirements, and satisfactorily complete a total of 90 semester hours of work for credit, and must pass all required courses. The required courses currently consist of all first year courses, Constitutional Law, Legal Research II, and a Senior Writing Seminar.

RESIDENCE REQUIREMENTS

A candidate must complete six semesters of residence (the last two must be in this School of Law). In order to obtain residence credit for a semester, a

candidate must complete a minimum of 12 hours of work and must obtain final credit in a minimum of 10 hours of work. A candidate who either examines in or obtains final credit for fewer than the required minimum hours will be given proportionate (12ths) residence credit. No credit toward residence is given in courses in which a student receives a failing grade.

LIMITATION OF COURSE HOURS

No student may register for more than 16 hours without the consent of the dean. It is advisable for students to devote most of their time to their work in the school. Students who undertake substantial employment outside the school should reduce their course loads.

ATTENDANCE AND WITHDRAWAL

Regular attendance is required of each student. Specific rules regulating attendance and withdrawal are set forth in the law school rules. Copies of the rules are available in the law library.

EXAMINATIONS

A student who has not withdrawn, or been withdrawn, from a course is expected to take the examination for that course at the regularly scheduled time. Unexcused failure to take an examination will result in a failing grade. If failure to take an examination is excused, the student may, with the permission of the dean and the instructor, take the examination after the rest of the class or at the time it is next regularly offered. Withdrawal from a non-required course must be made in accordance with University deadlines.

POOR SCHOLARSHIP RULE

Grades are given in numbers on a scale of 0.0 to 4.0, with 2.0 being the average required for graduation. A student who fails to have a cumulative average of 1.9 at the end of the first year or 2.0 at the end of any other academic year will be dropped from the school for poor scholarship. During the student's senior year a 2.0 average must be obtained in courses taken during that senior year.

A student whose average at the end of the first year is below 1.9 may appeal to the dean, who refers the petition to the Academic Standards Committee to recommend acceptance or denial of a petition for readmission.

SCHOOL OF LAW ACADEMIC RULES

Copies of the academic rules of the law school are available in the law library, and are controlling if in conflict with statements contained in this bulletin.

Honors

The Dean's List is compiled every semester and includes those students in each class who rank in the top 15% of full time students. Those students comprising the top 10% of each class are eligible for nomination to membership in Phi Kappa Phi, a national honorary society.

GRADUATING HONORS

Individuals in the top 3% of a graduating class are awarded Juris Doctor degrees, Summa Cum Laude; the next highest 7% are awarded Juris Doctor degrees, Magna Cum Laude; and those in the next highest 10% are awarded Juris Doctor degrees, Cum Laude.

Tuition and Fees

Tuition and fees in the School of Law are established by the Board of Trustees and are subject to change whenever conditions make changes necessary. Present tuition and fees for regularly enrolled law students (taking 12 or more

Instructions

1. A completed application (typewritten or printed in ink) should include:
 - a) a non-refundable \$15.00 application fee
 - b) a completed application for admission form, signed on page 2
 - c) a completed information card (see inside back cover of this catalog)
 - d) a self-addressed stamped acknowledgment card (see inside back cover of this catalog) and
 - e) the Law School Application Matching Form (see paragraph 6, below).
2. These materials should be forwarded to:
Director of Admissions
School of Law
Southern Illinois University
Carbondale, Illinois 62901
3. Applicants must answer each question on the application. Incomplete applications will be returned and cause a delay in processing.
4. If an answer to any question on the application requires additional space, please submit a printed or typewritten supporting statement which will be treated as a part of the application.
5. To be admitted as a candidate for the Juris Doctor degree, an applicant must have received a bachelor's degree and must have demonstrated capacity for the study of law by a satisfactory undergraduate record and satisfactory performance on the Law School Admission Test (LSAT). An applicant's undergraduate record which consists of less than 75 semester hours (or 113 quarter hours) of graded work may be considered insufficient to give a reliable measure of the applicant's undergraduate performance.
6. SIU School of Law requires for each applicant an official LSDAS report, which is an evaluation by the Law School Data Assembly Service of your college and graduate transcripts, and your score(s) on the Law School Admissions Test. LSAT scores which are more than three years old will not be considered by the admissions committee.

Applicants must register directly with LSDAS by completing the form found in the LSAT Bulletin of Information. This bulletin of information may be obtained on request from the School of Law, from your undergraduate college, or from the Law School Admission Services, Box 2000-C, Newtown, PA 18940.

The School of Law cannot act on an application until it receives an applicant's Law School Application Matching form. The law school must return your form to the Law School Admissions Services to obtain an official LSDAS report. Therefore, be sure to include your LSAM form when you return this application.

7. The School of Law has no formal deadline for the submission of applications. However, applicants are strongly encouraged to submit their completed applications by February 1, 1987. Applications completed after that date will delay the admission decision.

8. Applicants for whom English is not their native language must take the Test of English as a Foreign Language (TOEFL) and supply the School of Law with an official report of the results of such test. (An application form for the TOEFL test will be sent to you by the School of Law at your request.)

The policy of the School of Law at Southern Illinois University is to comply fully with applicable federal and state nondiscrimination and equal opportunity laws, orders, and regulations. The School of Law does not discriminate in its programs and activities against any person because of race, color, national origin, ancestry, religion, age, sex, handicap, or status as a disabled veteran or a veteran of the Vietnam era. This nondiscrimination policy applies to admissions, employment, treatment of individuals, and access to programs.

of part-time students each year, based upon individual needs and economic circumstances.

Do you expect to be employed during the first year of law school?
Yes ☐ No ☐

If yes, how many hours per week? _____

18. My racial or ethnic origin is (answer optional):

(This information is requested so that this institution may demonstrate its compliance with federal regulations.)

19. Were you employed during any academic year while an undergraduate or graduate student? If yes, please indicate the average number of hours worked per week.

Freshman _____ Sophomore _____ Junior _____ Senior _____
Graduate _____

20. Are there any physical, social, or economic obstacles which you feel you had to overcome in the course of your education and which are relevant to assessing your prior accomplishments?

Yes ☐ No ☐

If yes, please explain. _____

23. I learned about the SIU School of Law from:

- _____ an SIU School of Law representative
- _____ pre-law adviser
- _____ pre-law handbook
- _____ an SIU School of Law graduate or student
- _____ special mailing
- _____ other, please specify _____

24. I certify that I have read all the information contained in this application and that the answers to the questions are true. I am the author of any statements included with this application. In the event that any information provided is subsequently found to be false, I understand that my acceptance may be voided and my matriculation cancelled.

Applicant's Signature

Date

10. Have you registered with LSDAS during the current academic year?

Yes ☐ No ☐

If not, when did you register? _____

11. LSAT: Have taken _____, plan to take _____

Date (mo./yr.)

Date (mo./yr.)

12. Have you previously applied to this Law School?

Yes ☐ No ☐

If the answer is yes, please indicate date(s): _____

If you answer "yes" to any of questions 13 through 16, furnish a complete explanation of the circumstances on an attached supplemental sheet.

13. Have you ever enrolled in any other law school?

Yes ☐ No ☐

Are you eligible to re-enroll there?

Yes ☐ No ☐

14. Have you ever been charged with fraud, immorality, or improper or dishonorable conduct in any kind of proceeding?

Yes ☐ No ☐

15. Have you ever been charged with a crime, other than a minor traffic violation?

Yes ☐ No ☐

16. Have you ever been accused in a court-martial proceeding or received less than an honorable discharge from any branch of the armed services?

Yes ☐ No ☐

17. The ABA accreditation standards define a full-time student as one who devotes substantially all of his/her working hours to the study of law. However, the law school also admits a number

21. The admissions committee of the School of Law encourages each

applicant to submit additional material relevant to the application for admission. The personal statement should be used to explain pertinent information about yourself that may not be evident from the formal academic records alone. Examples of such pertinent information include work experience, community activities, explanation of interruptions in academic work, special programs, and foreign study. Letters of evaluation that offer specific and meaningful insights into your qualifications to study law are encouraged.

22. Do you need additional information?

Yes ☐ No ☐

If yes, please check the appropriate box.

☐ LSAT/LSDAS application

☐ TOEFL application (foreign students)

☐ Financial aid information (mailed only to admitted applicants)

☐ Other, please specify _____

Present tuition and fees for regularly enrolled law students (taking 12 or more

semester hours) are \$894.70 per semester for residents and \$2,154.70 per semester for non-residents. Books will cost about \$200 per semester.

Financial Aid

Although the School of Law has limited resources for financial aid at its disposal, there are available through the school:

1. A significant number of research assistantships awarded to members of the second- and third-year classes primarily on a merit basis. Assistantships provide a tuition waiver and a modest monthly salary. Approximately one-third of the upperclass students have assistantship appointments.
2. A limited number of work opportunities in the law library and in the administrative offices of the school.
3. A limited number of cash grants.
4. A limited number of tuition-remission scholarships awarded on an academic basis to first-year students and on a financial-need basis to second- and third-year students.
5. A limited number of fellowships available to minority students with demonstrated financial need.

Specific instructions for applying for financial aid are mailed during the spring to entering students.

The University maintains an Office of Student Work and Financial Assistance through which work on campus, cooperative work-study programs, the federal work-study program, various veterans benefits (both state and federal), and student loans are negotiated. For more specific information, students should contact the Office of Student Work and Financial Assistance, Woody Hall, Southern Illinois University, Carbondale, Illinois 62901.

SCHOLARSHIPS AND AWARDS

Current scholarships, honors, and awards are:

James O. Monroe Award

Max Turner Memorial Scholarship Award

Hiram H. and Rosalee Lesar Scholarship Award

W. Philo Gilbert Memorial Scholarship Award

Edgar O. and Bonnie Zimmer Law Scholarship Fund

Cheney and Pirages Award

John S. Rendleman Award

Lincoln's Inn

Order of Barristers

Illinois Bar Foundation Research Fellows

Journal of Legal Medicine Award

Antitrust Award

American Bar Association Section of Urban, State, and Local Government Award

Bureau of National Affairs *Law Week* Award

Matthew Bender Award

Prentice-Hall Tax Award

West Publishing Company Awards

Lawyers Co-op Publishing Company Awards

There are also state and national essay competitions on legal subjects, and scholarships are available to law students at any school from a variety of organizations. Information about these opportunities is available in the law school.

Housing

University on-campus housing is available for 4,771 single students and 576 married students. Two newly-remodeled residence halls across the street from the law school are reserved for law student single-room occupancy, and several apartments in married student housing are reserved for law students. Off-campus housing is readily available. Inquiries concerning other on-campus or off-campus housing may be obtained from University Housing, Washington Square, Southern Illinois University, Carbondale, Illinois 62901.

Honor Code

Preparation for law must encourage individual integrity as well as an understanding of law. The School of Law has adopted its own comprehensive ethics and disciplinary code. The high regard for ethical conduct at SIU is reflected in the unique practice of giving each law student a key to the building and library. Copies of the code will be sent to applicants on request and are available in the law library.



Clinical Program

The school operates an extensive, in-house legal aid clinic. It also offers a limited externship program. The clinic provides selected students with a number of internships and research assistantships. Other students may obtain credit. Clients include the elderly in thirteen southern Illinois counties and the inmates of three state and one federal prison. Students also work with the Land of Lincoln program for indigent persons, with state's attorney's offices, and with public defender and appellate public defender programs. There is an unusual opportunity for variety in the clinic experience. For instance, an Illinois Supreme Court rule enables third-year clinic students to practice in court as long as they are accompanied by a licensed attorney. Clinic credit may not be given before a student's fifth semester. The total hours obtainable are limited.

Law Journal

The *Southern Illinois University Law Journal*, published quarterly, is a scholarly legal journal which publishes articles and shorter student work on the law and law-related topics. Published materials include articles written by law students, law professors, judges, and other members of the legal profession. The journal is managed and edited by an editorial board made up of third-year law students. Members of the editorial board are elected from those second-year students who have successfully completed the journal's writing program. The writing program involves second-year students in an intensive program of legal research, writing and analysis under the direction of the editorial board. Participation by second-year students in the journal's writing program is determined on both an invitational and a competitive basis open to all students in good standing.

The Journal of Legal Medicine, the official quarterly publication of the American College of Legal Medicine, presents, on a regular basis, articles written by students at Southern Illinois University School of Law. This arrangement is designed to allow law students who have special interests in law and medicine to pursue those interests through scholarly research and publication.

Legal Argumentation

The legal argumentation program is a comprehensive one. It provides a required experience in appellate practice in the first year. This is followed by an opportunity to participate in regional and national competitions, including the ABA-sponsored National Appellate Advocacy and Client Counseling Competitions, the Jessup International Law Moot Court Competition, the National Trial Competition, and the National and ABA Moot Court Competitions. SIU teams have enjoyed great success in these competitions. Law School teams won, in 1985, the national American Bar Association Moot Court Competition and, in 1985 and 1986, the regional rounds of the Jessup International Law Moot Court Competition.



Concurrent Degree Programs

The School of Law, in cooperation with the Graduate School, offers concurrent J.D. and master's degrees in business administration, public affairs, and accountancy. A student must be enrolled in both the graduate program and the law school. The master's programs ordinarily require 30 hours of study, while the law degree requires 90 hours. When the master's and J.D. degrees are pursued concurrently, a significant reduction in the total number of hours required to earn both degrees is achieved. Details of the concurrent degree programs are available from the law school registrar, Norma Brown. Students should make their interest in the concurrent degree program known to the registrar after the completion of the first year of law school study.

Student Organizations

The student body has drafted and adopted a constitution and by-laws for the Student Bar Association of which every regular law school student is a member. The association functions primarily through officers and committees elected by the membership at large and plays an integral role in the operation and governance of the law school. The students who serve as representatives to the faculty meetings are elected by the students, and those who serve on the various faculty committees are appointed by the dean from a list submitted by the Student Bar Association.

Other student organizations are Phi Alpha Delta, Delta Theta Phi, the Donald F. McHenry International Law Society, the Women's Law Forum, the National Lawyers Guild, the Black American Law Students Association, the Christian Legal Society, and law student divisions of the Illinois State Bar Association and the American Bar Association.

Placement Services

A full range of placement services is offered to students and alumni including current job listings, on-campus interviews with prospective employers, and resume assistance. Students are encouraged to begin career planning early in their law school years and to seek summer and part-time legal employment experience. The placement office staff will make every effort to help students identify and pursue employment opportunities.

The School of Law is firmly committed to a policy against discrimination in employment based on sex, race, religion, age, handicap, or national origin, and it expects that all employers who use the placement services will make certain that no such discrimination occurs.

Statistics gathered on the Class of 1985 in February 1986 indicated that 80% of the 104 class members were employed. Sixty percent of the employed graduates had accepted positions in private practice, and 22% held positions with federal, state, or local government. Sixty responses to a salary question indicated a range from \$15,000 to \$39,000. Seventy-five percent of the employed graduates were working in Illinois.

2

Faculty and Staff

Faculty

W. EUGENE BASANTA, B.A., J.D., LL.M.

Associate Professor of Law

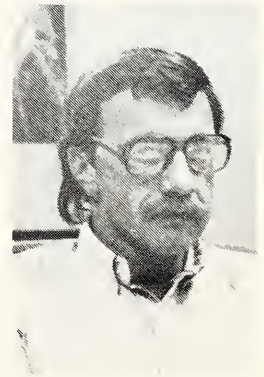
B.A. Cum Laude 1972, Williams College, Phi Beta Kappa; J.D. with High Distinction 1975, University of Kentucky, Order of the Coif, Law Review; LL.M. 1980, Temple University. Admitted to practice in Kentucky. Law clerk, Fayette County Circuit Court, 1974-75; private practice, Louisville, 1975-78; assistant professor, 1980-85; associate professor at SIU School of Law since 1985. Author of articles in legal periodicals.



ROBERT E. BECK, B.S.L., LL.B., LL.M.

Professor of Law

B.S.L. 1958, LL.B. 1960, University of Minnesota; LL.M. 1966, New York University. Admitted to practice in Minnesota. Private practice 1960-62; assistant professor, University of North Dakota, 1962-65; visiting associate professor, University of Maine, 1965-66; associate professor, 1966-68, professor, 1968-75, Chester Fritz Distinguished Professor, 1975-76, University of North Dakota; professor at SIU School of Law since 1976. Author of *Drainage Law, 5 Waters and Water Rights* (R. Clark ed. 1967, 1972, 1976); *Water Pollution and Water Quality: Legal Controls* (with Goplerud; Allen Smith Co., 1984); *Illinois Natural Resources Law* (Mason Publishing Co., 1985); and of articles in legal periodicals.



KEITH H. BEYLER, A.B., J.D.

Assistant Professor of Law

A.B. Magna Cum Laude 1969, Princeton University, Phi Beta Kappa; J.D. Cum Laude 1974, University of Chicago, Order of the Coif, Law Review. Admitted to practice in California. Law clerk, Justice James A. Cobey, California Court of Appeals, 1974-75; private practice, Los Angeles, 1975-82; assistant professor at SIU School of Law since 1982. Author of articles in legal periodicals.



RICHARD DELGADO, A.B., J.D.

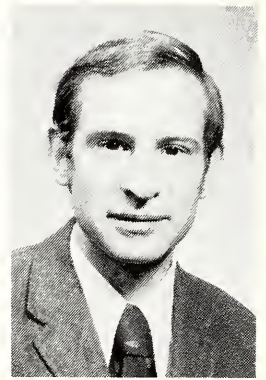
Dan Hopson Distinguished Visiting Professor, 1986

A.B., University of Washington; J.D. 1974, University of California. Note and Comment Editor, *California Law Review*. Assistant professor, Arizona State University, 1974-75; Fellow, Yale Law School, 1975-76; associate professor, University of Washington, 1975-78; visiting professor, University of California, Davis, 1981-82, University of Pennsylvania, fall 1984; professor, University of California, Los Angeles, 1978 to present. Author of numerous legal and nonlegal articles.

DARRELL W. DUNHAM, B.A., J.D., LL.M.

Professor of Law

B.A. 1968, J.D. Magna Cum Laude 1971, Willamette University; LL.M. 1972, Harvard Law School. Admitted to practice in Washington and Illinois. Law clerk, Justice Sloan, Oregon Supreme Court, 1970; associate professor of law, University of Idaho, 1972-75; visiting professor of law, University of South Dakota, 1975-76; visiting professor of law, University of San Diego, summer 1976; associate professor, 1976-79, professor at SIU School of Law since 1979. Author of articles in legal periodicals.



HOWARD B. EISENBERG, B.A., J.D.

Associate Professor of Law

B.A. with Highest Distinction 1968, Northwestern University, Phi Beta Kappa; J.D. with Honors 1971, University of Wisconsin. Admitted to practice in Illinois, Wisconsin, and the District of Columbia. Law clerk, Justice Horace W. Wilkie, Wisconsin Supreme Court, 1971-72; State Public Defender, State of Wisconsin, 1972-78; Defender Director, 1978-79, Executive Director, 1979-83, National Legal Aid and Defender Association; consultant to state and local governments on the delivery of legal services to indigent criminal defendants, 1978-83; associate professor and director, clinical program, at SIU School of Law since 1983. Author of articles in legal periodicals.



MARIA FRANKOWSKA, LL.M., Ph.D., J.S.D.

Visiting Associate Professor of Law

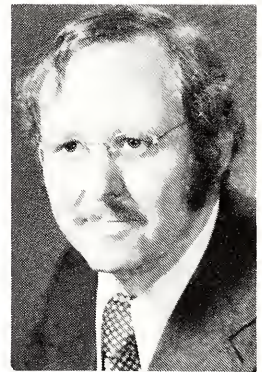
LL.M. 1961, Warsaw University; Ph.D. 1968, Wroclaw University; J.S.D. 1976, Institute of State and Law, Polish Academy of Science. Lecturer, Foreign Trade Department, Central School of Planning and Statistics, Warsaw, 1963-70; assistant professor, 1970-77, associate professor 1978-82, Polish Academy of Sciences, Warsaw; visiting scholar, Treaty Research Center, University of Washington, 1982-83; adjunct professor, spring 1984, visiting associate professor of law at SIU School of Law since fall 1984. Member of Polish Delegation at numerous international conferences; visiting scholar in England and U.S., 1976-77. Author of *Denunciation of International Treaties* (Warsaw, 1976), *International Agreements in Simplified Form* (Warsaw, 1981), and of articles in legal periodicals.



DONALD W. GARNER, B.A., J.D.

Professor of Law

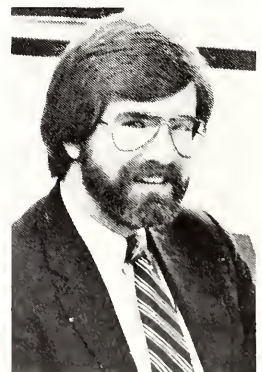
B.A. 1967, University of Texas at Arlington; J.D. Cum Laude 1971, University of Texas at Austin, Chancellors Honorary Society, Order of the Coif, Phi Delta Phi, Law Review. Admitted to practice in Texas. Briefing attorney to Chief Justice, Texas Supreme Court, 1971-72; private practice, Dallas 1972-74; assistant professor, 1974-77, associate professor, 1977-80, professor since 1980, associate dean, 1981-84 at SIU School of Law. Faculty advisor, Illinois Judicial Conference, 1976; Amoco Outstanding Teacher Award, 1976. Visiting professor, University of Arkansas School of Law, 1980-81. Author of articles in legal periodicals.



C. PETER GOPLERUD III, B.A., J.D.

Professor of Law and Associate Dean

B.A. 1971, J.D. 1974, University of Kansas. Admitted to practice in Kansas. Law clerk, Justice David Prager, Supreme Court of Kansas, 1974-77; assistant professor, University of Akron, 1977-81; associate professor 1981-85, professor at SIU School of Law since 1985. Author of *Coal Development and Use* (Lexington Books, 1983); *Water Pollution and Water Quality: Legal Controls* (with Beck; Allen Smith Co., 1984), and of articles in legal periodicals.



RICHARD A. GREEN, B.A., J.D.

Adjunct Professor of Law

B.A. 1968, Southern Illinois University; J.D. 1972, University of Illinois. Admitted to practice in Illinois. In private practice 1972-present. Adjunct professor of law at SIU School of Law, 1976. Assistant team leader, National Institute of Trial Advocacy, 1979-80. Adjunct professor of law at SIU School of Law since 1980.



LEONARD GROSS, B.A., J.D.

Assistant Professor of Law

B.A. 1973, State University of New York at Binghamton; J.D. Magna Cum Laude, Boston University, 1976, Editor of Law Review. Admitted to practice in Massachusetts, Illinois, and New York. Law clerk, Judge Frederick Brown, Massachusetts Appeals Court, 1976-77; private practice, New York, 1977-83; assistant professor at SIU School of Law since 1983.



HAROLD W. HANNAH, B.S., J.D.

Adjunct Professor of Law

B.S. 1932, J.D. 1935, University of Illinois. Director, Division of Special Services for War Veterans, 1945-47; associate professor, agricultural law and administration, University of Illinois, 1935-41 and 1947-54; dean of resident instruction, College of Agriculture, 1954-59; group leader of contract team in India, 1955-57; professor of agriculture and veterinary medicine law, University of Illinois, 1959-71; private practice since 1971; lecturer and adjunct professor at SIU School of Law since 1975. U.S. Army, 1941-45. Author of *Law on the Farm* (MacMillan, 1948); *Law and Court Decisions on Agriculture* (with Krausz, Stipes Publishing Co., 1968); *Law for the Veterinarian and Livestock Owner* (Interstate, 1974); *Resource Book for Universities in Developing Countries* (University of Illinois Press, 1966); *The Legal Base for Universities in Developing Countries* (with Caughey, University of Illinois Press, 1967); *Law and the Farmer* (revision of Buescher, Springer Publishing Company 1975), and articles in legal periodicals.



FRANK G. HOUDEK, B.A., J.D., M.L.S.

Associate Professor of Law and Library Director

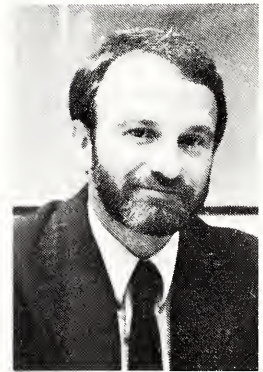
B.A. Cum Laude 1971, J.D. 1974, Order of the Coif, M.L.S. 1976, UCLA. Admitted to practice in California. Certified law librarian. Reference librarian, Los Angeles County Law Library, 1975-79; librarian, Lawler, Felix & Hall, Los Angeles, 1979-82; associate director of law library and adjunct assistant professor of law, University of Southern California, 1982-85; associate professor of law and library director at SIU School of Law since 1985. Author of numerous legal bibliographies and articles in legal periodicals.



ROBERT H. HOWERTON, B.A., J.D.

Adjunct Professor of Law

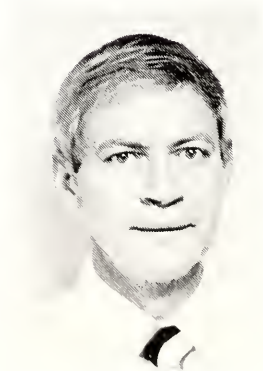
B.A. 1965, Southern Illinois University at Carbondale; J.D. 1968, Northwestern University, Ford Fellowship. Admitted to practice in Illinois and Georgia. Private practice, Illinois, 1968-72; Williamson County, Illinois, state's attorney, 1972-79; circuit judge, First Judicial Circuit, Illinois, 1979-present; adjunct professor of law at SIU School of Law since 1984. Faculty member, National Institute of Trial Advocacy, 1980-84, State's Attorneys Trial Advocacy School, 1978-84, Illinois Judicial Conference, 1984.



DAVID C. JOHNSON, B.S., C.P.A., J.D., LL.M.

Professor of Law

B.S. 1959, C.P.A. 1959, J.D., 1961, University of North Dakota, Order of the Coif, Editor-in-Chief of Law Review; LL.M. 1964, University of Pennsylvania. Admitted to practice in North Dakota and Georgia. U.S. Army Captain, 1961-63. Graduate fellow 1964, University of Pennsylvania; assistant professor 1964-67, associate professor 1967-70, professor 1970-71, Emory University; visiting professor 1971-72, professor 1972-75, University of Oklahoma; professor since 1975, associate dean at SIU School of Law, 1977-81. Author of *Georgia Landlord and Tenant Law* (*Encyclopedia of Georgia Law*, 1968), and of articles in legal periodicals.



PATRICK J. KELLEY, B.A., J.D.

Professor of Law

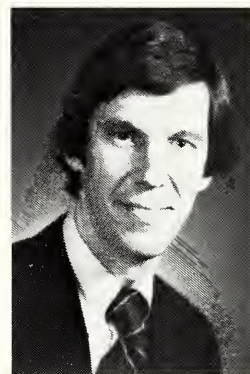
B.A. 1965, University of Notre Dame, Valedictorian; graduate study 1965-66, Stanford University; J.D. 1969, University of Iowa, Editor-in-Chief of Law Review. Private practice, Chicago, 1969-71; assistant professor, 1971-75, associate professor, 1975-79, Washington University; fellowship in Law and Humanities, Harvard Law School, 1976-77; private practice, St. Louis, 1979-81; associate professor 1981-84, professor at SIU School of Law since 1984. Author of articles in legal periodicals.



EDWARD J. KIONKA, B.S., J.D., LL.M.

Professor of Law

B.S. 1960, J.D. 1962, University of Illinois, Order of the Coif, Law Review; LL.M. 1974, Columbia University. Admitted to practice in Illinois and Missouri. Private practice 1962-64, 1971-72, 1975-76. Lt. Cdr., USNR. Teaching associate, Columbia University, fall 1962; instructor in law, University of Michigan, 1964-65; director, Illinois Institute for Continuing Legal Education, 1965-67; assistant dean and assistant professor of law, University of Illinois, 1967-71; special counsel, General Government Committee, Sixth Illinois Constitutional Convention, 1970; Krulewitch Fellow, Columbia University, 1972-73; associate professor, 1973-75, 1976-77, adjunct professor, 1975-76, professor since 1977, associate dean at SIU School of Law 1984-85; visiting professor, Washington University, 1979-80, McGeorge School of Law, 1985-86. Author of *Torts in a Nutshell*; *Injuries to Persons and Property*, and of articles in legal periodicals. Editor of *Illinois Civil Practice After Trial* (Illinois Institute for Continuing Legal Education, 1970, 1976).



MARK R. LEE, B.A., J.D.

Professor of Law

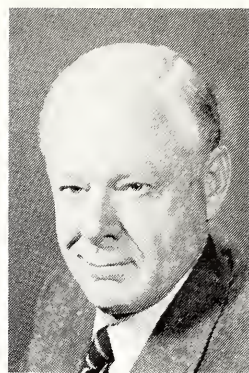
B.A. 1971, Yale University; J.D. with High Honors 1974, University of Texas, Austin, Chancellors, Order of the Coif, Phi Kappa Phi, Texas Law Review. Admitted to practice in Texas. Instructor, University of Texas Law School, 1973-74; assistant attorney general, Austin, Texas, 1974-75; attorney, Department of Justice, Washington, D.C., 1975-76; instructor, University of Miami, 1976-77; assistant professor 1977-81, associate professor 1981-85, professor of law at SIU School of Law since 1985. Visiting lecturer, University of Warwick, England, spring 1984; visiting Fellow, Max Planck Institute of Foreign and International Private Law, Hamburg, West Germany, summer 1986; member, Governor's Task Force on Utility Regulation Reform, 1982-84. Author of *Antitrust Law and Local Government* (Greenwood Press, 1985) and of articles in legal periodicals.



HIRAM H. LESAR, A.B., J.D., J.S.D.

Visiting Professor of Law

A.B. 1934, J.D. 1936, University of Illinois; J.S.D. 1938, Yale. Admitted to practice in Illinois, Missouri, U.S. Supreme Court. Sterling Fellow, Yale, 1936-37; assistant professor 1937-40, associate professor 1940-42, University of Kansas; senior attorney 1942, principal attorney 1943, Board of Legal Examiners, Washington, D.C.; U.S. Navy 1944-46 (Lt. Cdr.); associate professor 1946-48, professor 1948-57, University of Missouri; professor 1957-60, dean and Zumbalen professor 1960-72, Washington University; dean and professor of law at SIU School of Law 1972-80; interim president 1974, acting president 1979-80, Distinguished Service Professor, SIU, since 1981. Summer visiting professor: Illinois, 1947; Indiana, 1952; Southern California, 1959; North Carolina, 1961; New York University, 1965. Reporter, Special Study Committee on the Judiciary (Mo.), 1966-67. Author of *Landlord and Tenant* (Little-Brown, 1957); Vol. I Pt. 3 of *American Law of Property* (Casner ed., Little-Brown, 1952, Suppl. 1977); and articles in legal periodicals.



BRIAN E. MATTIS, B.S.B.A., J.D., LL.M.

Professor of Law

B.S.B.A. 1960, University of Florida; J.D. 1968, University of Miami; LL.M. 1969, Yale. Admitted to practice in Florida. Sterling Fellow, Yale, 1968-69; associate professor 1969-72, professor 1972-74, University of Nebraska; professor at SIU School of Law since 1974. Summer: University of Nebraska, 1970, 1972, 1973. Author of articles in legal periodicals.



TAYLOR MATTIS, B.A., J.D., LL.M.

Professor of Law

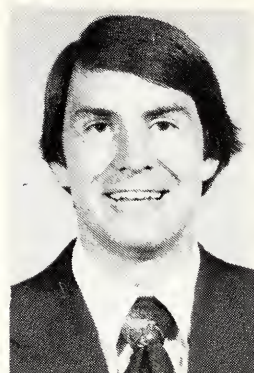
B.A. 1960, University of Alabama, Phi Beta Kappa; J.D. Cum Laude, 1963, University of Miami, Wig and Robe, Law Review; LL.M. 1969, Yale. Admitted to practice in Florida, Nebraska, and Illinois. Private practice, Ft. Lauderdale, 1963-66; law clerk, U.S. District Judge Emmett Choate, 1966-68; Sterling Fellow, Yale, 1968-69; attorney, Nebraska Appellate Justice Project, 1972-74; associate professor, 1974-77, professor at SIU School of Law since 1977. Author of articles in legal periodicals.



THOMAS B. McAFFEE, B.S., J.D.

Associate Professor of Law

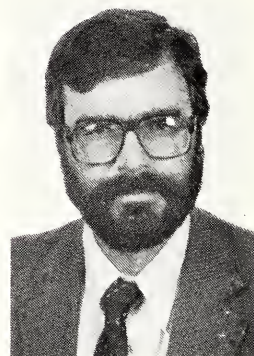
B.S. 1976, Phi Beta Kappa, J.D. 1979, University of Utah, Phi Kappa Phi, Order of the Coif, Law Review. Admitted to practice in California. Law clerk, The Honorable J. Clifford Wallace, U.S. Court of Appeals, 9th Cir., 1979-80; private practice, California, 1980-82; assistant professor 1982-85, associate professor at SIU School of Law since 1985.



PETER G. McALLEN, A.B., C.Phil., J.D.

Assistant Professor of Law

A.B. Cum Laude 1972, Princeton; C.Phil 1977, J.D. 1981, UCLA, Order of the Coif, Managing Editor of Law Review. Admitted to practice in California and Illinois. Extern for Honorable James L. Oakes, U.S. Court of Appeals, Second Circuit, 1979; law clerk, Honorable Warren J. Ferguson, U.S. Court of Appeals, Ninth Circuit, 1981-82; private practice, Chicago, 1982-84; assistant professor at SIU School of Law since 1984.



RALPH JOHN ROBERTSON, JR., A.B., J.D.

Assistant Professor of Law

A.B. with honors 1973, J.D. Cum Laude 1976, University of Missouri, Order of the Coif, Editor-in-Chief of Law Review. Admitted to practice in Missouri. Staff law clerk, U.S. Court of Appeals, 8th Cir., 1976-79; private practice, St. Louis, 1979-82, 1985-86; assistant professor at SIU School of Law 1982-85, 1986-. Author of articles in legal periodicals.



WILLIAM A. SCHROEDER, B.A., J.D., LL.M.

Associate Professor of Law

B.A. 1966, J.D. 1969, University of Illinois; LL.M. 1977, Harvard. Reginald Heber Smith Fellow, Boston Legal Assistance Project, 1969-70; teaching fellow, Boston College Law School, 1970-71, Order of the Coif (Boston College Chapter); private practice, Boston, 1971-74; assistant attorney general, Boston, 1975-77; director of litigation, Monroe County Legal Assistance, Rochester, 1977-78; assistant district attorney, New Bedford, 1979-80; associate professor, University of Alabama, 1980-84; visiting professor, University of Missouri, spring and summer, 1983; associate professor at SIU School of Law since 1984. Author of articles in legal periodicals.



RENNARD J. STRICKLAND, B.A., J.D., M.A., S.J.D.

Professor of Law and Dean

B.A. 1962, Northeastern State College; J.D. 1965, University of Virginia; M.A. 1966, University of Arkansas; S.J.D. 1970, University of Virginia. Assistant professor, University of Arkansas, 1966-69; assistant professor, University of West Florida, 1970-71; associate professor 1971-72, Sylvan Lange Distinguished Visiting Professor summer 1973, St. Mary's University; associate professor 1972-74, acting dean 1974-75, professor 1975, John W. Shleppey Research Professor of Law and History 1976-85, University of Tulsa; associate professor, University of Washington, 1975-76; visiting professor, University of New Mexico, summer 1975-77, fall 1976; visiting professor, Harvard, fall 1980; Reyer Distinguished Visiting Professor, University of West Virginia, October 1982; Stephen O'Connell Visiting Professor, University of Florida, spring 1983; Langston Hughes Distinguished Visiting Professor, University of Kansas, spring 1985; dean and professor of law at SIU School of Law since 1985. Chairman, Minority Enrollment Task Force, Law School Admissions Council, 1980-82; recipient, Society of American Law Teachers Award for Outstanding Teaching and Contribution to Law Reform, 1978. Author of *How to Get Into Law School* (Hawthorn Books, 1974, 1977, Law School Admission Council, 1985); *The Challenge of Minority Enrollment: Seeking Diversity in the Legal Profession* (Law School Admission Council, 1981); *Cohen's Handbook of Federal Indian Law* (ed. with Cohen Editorial Board, Michie-Bobbs-Merrill, 1982); *Fire and the Spirits: Cherokee Law from Clan to Court* (University of Oklahoma Press, 1975); and of articles in legal periodicals.



NORMAN VIEIRA, A.B., J.D.

Professor of Law

A.B. 1959, Columbia University; J.D. 1962, University of Chicago, Board of Editors of Law Review. Admitted to practice in Illinois and before U.S. Supreme Court. Law clerk, Justice Walter V. Schaefer, Illinois Supreme Court, 1963-65; professor, University of Idaho, 1965-82; visiting professor, UCLA, 1970-71; professor of law at SIU School of Law since 1982. Author of *Civil Rights in a Nutshell* (West Publishing Co.), and of articles in legal periodicals.



EDWARD L. WELCH, B.S., J.D.

Adjunct Professor of Law

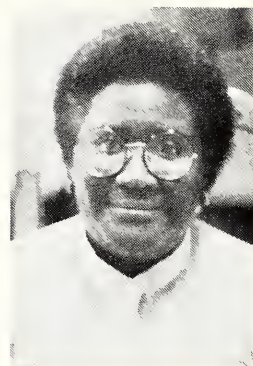
B.S. 1957, St. Louis University; J.D. 1960, Washington University, Order of the Coif. In private practice, East St. Louis and Edwardsville. Labor attorney with Allis-Chalmers and National Labor Relations Board, 1960-67; lecturer and adjunct professor of law at SIU School of Law since 1973.



WENONA Y. WHITFIELD, B.A., J.D.

Assistant Professor of Law

B.A. 1970, Illinois Wesleyan University; graduate study, 1970-72, J.D. 1977, Southern Illinois University. Private practice, Chicago, 1977-80; Illinois Department of Mental Health, 1980-81; assistant professor at SIU School of Law since 1981.

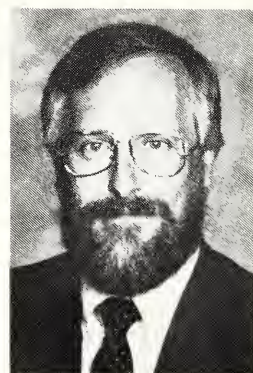


Clinical Program Staff

RICHARD J. HABIGER, B.A., J.D.

Staff Attorney

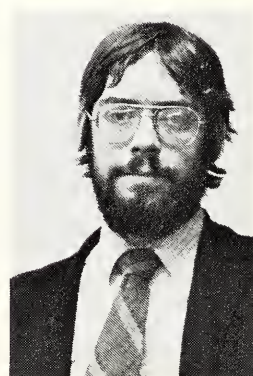
B.A. 1963, Rockhurst College; J.D. 1970, University of Missouri at Kansas City. Admitted to practice in Missouri and Illinois. Reginald Heber Smith Fellow, Legal Aid and Defender's Society of Kansas City, 1970-72; National Juvenile Law Center, St. Louis University, 1972-75. Staff Attorney, Clinical Program, SIU School of Law since 1975. Author of *Law and Tactics in Juvenile Cases* (with Evans, North, Piersma, Schiller & Spiller, National Juvenile Law Center, 2nd ed. 1975), and of articles in legal periodicals.



JAMES B. ROBERTS, B.A., J.D.

Staff Attorney

B.A. 1971, Adelphi University; J.D. 1977, Southern Illinois University. Admitted to practice in Illinois, U.S. District Court, S.D. Illinois and U.S. Court of Appeals for the Seventh Circuit. Managing attorney, Clinical Program, SIU School of Law, 1977-80; private practice, 1980-82; staff attorney, Clinical Program, SIU School of Law since 1982.



Law Library Staff

KAY L. ANDRUS, B.A., M.L.S., J.D.

Assistant Professor in the Law Library and Librarian for Reader Services

B.A. Cum Laude 1977, M.L.S. 1980, J.D. 1980, Brigham Young University. Admitted to practice in Oklahoma. Certified law librarian. Assistant librarian, Oklahoma City University Law Library, 1980-81; senior reference librarian, Southern Methodist University Law Library, 1981-84; reader services librarian/assistant professor at SIU Law Library since 1984.



R. KATHY GARNER, B.A., M. of Libr., J.D.

Assistant Professor in the Law Library and Librarian for Reference and Instructional Services

B.A. 1964, University of Oregon; M. of Libr. 1967, University of Washington, Beta Phi Mu; J.D. Cum Laude 1983, Southern Illinois University, Managing Editor of Law Journal. Admitted to practice in Illinois. Circulation librarian, University of Texas Law Library, 1970-72; private practice, Metropolis, 1983-85; reference/instructional services librarian/assistant professor at SIU Law Library since 1985.



ELIZABETH W. MATTHEWS, B.A., M.S., Ph.D.

Professor in the Law Library and Librarian for Cataloging

B.A. 1948, Randolph Macon College; M.S.(L.S.) 1952, University of Illinois, Beta Phi Mu; Ph.D. 1972, SIU, Phi Kappa Phi. Certified law librarian. Library assistant in catalog/acquisitions, 1948-51; catalog librarian, Ohio State University, 1952-59; visiting lecturer, University of Illinois, 1964; instructor, SIU, 1964-70; catalog librarian/assistant professor, 1974-79, catalog librarian/associate professor, 1979-85, professor at SIU Law Library since 1985.



HEJIA B. RYOO, B.B.A., M.L.S.

Assistant Professor in the Law Library and Librarian for Acquisitions

B.B.A. 1966, Sook Myung Women's University, Seoul, Korea; M.L.S. 1980, Indiana University. Cataloging/acquisitions assistant, 1971-80, acquisitions librarian/instructor, 1980-82, assistant professor at SIU Law Library since 1982.



LAUREL ANNE WENDT, B.A., M.L.S., J.D.

Associate Professor in the Law Library and Associate Director

B.A. 1967, M.L.S. 1968, J.D. 1978, Indiana University. Admitted to practice in Indiana. Certified law librarian. Librarian, Glen Oaks Community College, 1968-71; librarian, McKendree College, 1971-72; reader services librarian/assistant professor 1978-82, automation/research librarian 1982-1984, associate director since 1984, associate professor at SIU Law Library since 1984.



Administrative Staff

SCOTT NICHOLS, B.G.S., J.D., *Director of Admissions*

NORMA M. BROWN, B.A., *Registrar*

RITA L. MOSS, *Placement Director*

BOBBI M. GREEN, *Secretary to the Dean*

PATRICIA REED, *Admissions Secretary*

Acknowledgement Card

- We have received your application for admission, and your LSAM form has been directed to ETS. Upon receipt of your LSDAS report from ETS, your file will then be ready for admissions committee action. You will be notified of the action taken by the committee.
- We have received your application for admission. Before the admissions committee can consider your application, the following items must be received. Please take whatever steps are necessary to furnish us with the missing items:
LSAM form ____ Information card ____ Application fee (\$15) ____

Other _____
- Your application for admission has been received and found to be incomplete. It is being returned to you so that you can complete answers to the following questions:

Information Card

Name

Last

First

Middle

Sex

Applying for Fall,

Year

LSDAS Reg. No.

Vet

Soc. Sec. No.

Permanent Address

Street

County

()

City

State

Zip

Telephone

Local Address

Street

County

()

City

State

Zip

Telephone

Undergraduate School

(Do not write below this line)

Applic.

LSDAS

GPA

LSAT

INDEX

Writing Score

LSAM Form Sent

Dep. Recd.

STATUS

