

1980

1980-1981 Southern Illinois University Bulletin Carbondale Campus (School of Law Catalog)

Southern Illinois University Carbondale

Follow this and additional works at: http://opensiuc.lib.siu.edu/ua_bcc

Recommended Citation

, "1980-1981 Southern Illinois University Bulletin Carbondale Campus (School of Law Catalog)." (Jan 1980).

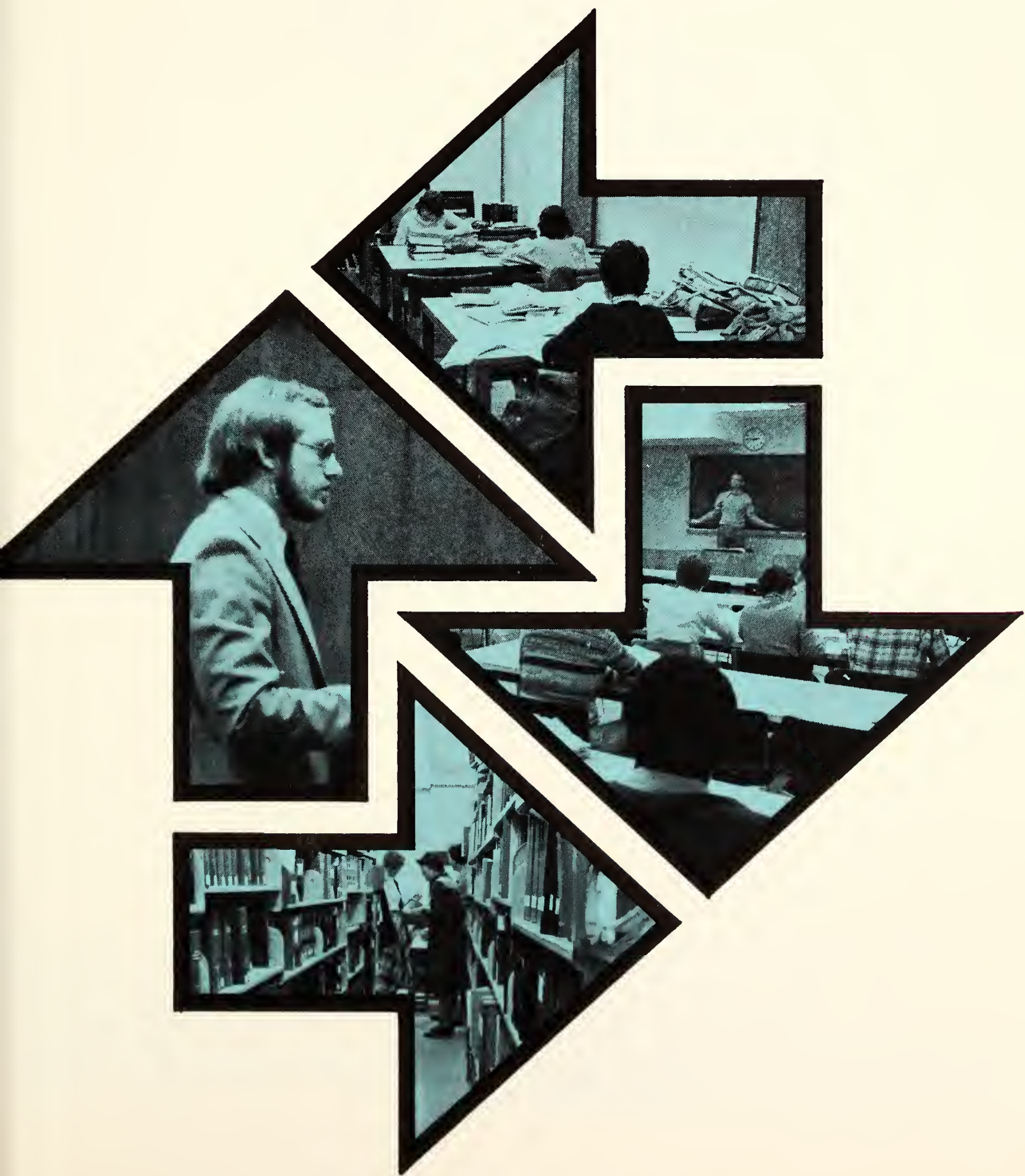
This Article is brought to you for free and open access by the University Archives at OpenSIUC. It has been accepted for inclusion in SIU Bulletins and Course Catalogs by an authorized administrator of OpenSIUC. For more information, please contact opensiuc@lib.siu.edu.

Southern Illinois University at Carbondale Bulletin



22/3

1980-1981
School of Law Catalog



Southern Illinois University at Carbondale is an Equal Opportunity Affirmative Action institution in accordance with civil rights legislation and does not discriminate on the basis of race, religion, national origin, sex, age, handicap, or other factors prohibited by law in any of its educational programs, activities, admission, or employment practices. Concerns regarding this policy should be referred to the Affirmative Action Office, Southern Illinois University at Carbondale, Anthony Hall, Room 104, telephone 618-536-6618.



**Southern
Illinois
University
at Carbondale
Bulletin**

**1980-1981
School of Law
Catalog**

**Southern Illinois University
at Carbondale Bulletin
(USPS 506-080)**

Volume 22, Number 3, August 1980

**Second-class postage paid at
Carbondale, Illinois 62901.
Published by
Southern Illinois University
at Carbondale,
Carbondale, Illinois 62901,
six times per year, in June, July,
August, September, October,
and November.**

This Issue

The School of Law Catalog covers in detail questions concerning the School of Law program of Southern Illinois University at Carbondale. (It supersedes Vol. 21, No. 3, of the *Southern Illinois University at Carbondale Bulletin*.) The University reserves the right to change information contained herein on matters other than curricular requirements without notice when circumstances warrant such action, and apply the change to all students without regard as to their date of entry into college.

The following publications may be obtained free from University Graphics, Southern Illinois University at Carbondale, Carbondale, Illinois 62901.

Graduate Catalog
Undergraduate Catalog
School of Law Catalog
Schedule of Classes (fall, spring, or summer)

Table of Contents

<i>Board of Trustees and Officers of Administration</i>	iv
<i>School of Law Calendar</i>	v
<i>University General Information</i>	1
History	1
Location	2
Campus	2
1 School of Law	3
Purposes	3
Facilities	4
Library	4
Accreditation	4
Curriculum	6
First-Year Courses	7
Second- and Third-Year Courses	7
Admission	8
Degree Requirements	8
Residence Requirement	8
Limitation of Course Hours	8
Attendance and Withdrawal	9
Examinations	9
Poor Scholarship Rule	9
Tuition and Fees	9
Financial Aid	9
Housing	10
Honor Code	10
Student Bar Association	11
Legal Aid Clinic	11
Law Journal	11
Moot Court	11
Concurrent Degree Programs	12
Placement Services	12
Research Bureau	12
2 Faculty and Staff	13
Faculty	13
Visiting Faculty, Summer, 1980	20
Clinical Law Program Staff	21
Law Library Staff	22
Administrative Staff	22

Board of Trustees and Officers of Administration

Board of Trustees of Southern Illinois University	<i>Term Expires</i>
William R. Norwood, <i>Chairman</i> , Elk Grove Village	1983
A. D. Van Meter Jr., <i>Vice-Chairman</i> , Springfield	1981
Carol Kimmel, <i>Secretary</i> , Rock Island	1983
Ivan A. Elliott Jr., Carmi	1985
Wayne Heberer, Belleville	1981
Harris Rowe, Jacksonville	1983
George T. Wilkins Jr., Edwardsville	1985
Robert L. Saal, Student Trustee, Carbondale	1980
Gregory L. Warren, Student Trustee, Edwardsville	1980

Officers of Administration, The Southern Illinois University System

Kenneth A. Shaw, *Chancellor*
James M. Brown, *Vice Chancellor*
Thomas C. Britton, *Executive Assistant to the Chancellor*
Alice A. Griffin, *Board Assistant Secretary*
C. Richard Gruny, *Legal Counsel*
R. D. Isbell, *Board Treasurer and System Capital Affairs Officer*
Keith R. Sanders, *Governmental Relations Officer*
Mary Walker, *Assistant to the Chancellor*
Howard Webb, *System Academic Officer*
Donald W. Wilson, *System Financial Officer*

Officers of Administration, Southern Illinois University at Carbondale

Albert Somit, *President*
John C. Guyon, *Acting Vice President for Academic Affairs and Research*
Dan Hopson, *Dean, School of Law*
David C. Johnson, *Associate Dean, School of Law*
Robert E. Beck, *Acting Associate Dean, School of Law*

School of Law Calendar

Summer Session, 1980

Classes begin	Monday, June 9
Independence Day holiday	Friday, July 4
Classes end	Tuesday, July 29
Final examinations	Wednesday, July 30— Friday, August 1
Commencement	Saturday, August 2

Fall Semester, 1980

Orientation	Friday, August 22— Sunday, August 24
Classes begin	Monday, August 25
Labor Day holiday	Monday, September 1
Thanksgiving vacation	Saturday, November 22— Sunday, November 30
Classes end	Tuesday, December 9
Final examinations	Wednesday, December 10— Saturday, December 20

Spring Semester, 1981

Classes begin	Wednesday, January 14
Lincoln's Birthday holiday	Thursday, February 12
Spring vacation	Saturday, March 14— Sunday, March 22
Classes end	Friday, May 1
Final examinations	Monday, May 4— Friday, May 15
Commencement	Saturday, May 16



University General Information

History

The Southern Illinois University System is a senior public university system comprising two diverse institutions—Southern Illinois University at Carbondale and Southern Illinois University at Edwardsville—and serving approximately 33,000 students.

Chartered in 1869, Southern Illinois Normal University served as a teacher-training institution until 1943, when the school was transformed into a university, giving official recognition to the area's demand for diversified training and service. SINU became Southern Illinois University in 1947, and in 1949 began offering off-campus academic courses in the Metropolitan East St. Louis area, an initiative which led to the eventual development of a separate, distinctive institution in Edwardsville.

The mission and scope of The Southern Illinois University System are highly complex and emphasize a commitment to fine quality in education. As The Southern Illinois University System has grown and flourished, its constituent universities have developed programs of instruction, research, and public service which have attracted and served students, faculty, and staff not only from the region but from throughout the state of Illinois, the nation, and from overseas, as well.

The universities within The Southern Illinois University System offer a broad range of academic programs at the associate, baccalaureate, master's, doctoral, and professional levels. In addition to the many undergraduate degree programs offered, the System supports more than sixty academic programs which lead to the master's degree and twenty-two which lead to the doctorate. The professional schools are designed to provide first-rank health and legal graduates trained to meet the particular needs of the people of Illinois. Southern Illinois University at Carbondale operates a School of Law in Carbondale and a School of Medicine headquartered in Springfield, the first year of which is offered in Carbondale; Southern Illinois University at Edwardsville operates a school of nursing in Edwardsville and a School of Dental Medicine in Alton. More than 6,000 of the 33,000 students currently enrolled are in graduate and professional programs.

The instructional, research, and service missions of the two universities reflect the needs of the geographic areas in which they are located. The System is also committed to serving state, national, and international needs, a commitment reflected in educational activities located away from the main campuses in communities throughout the state and nation. Countries throughout the world experience this commitment through research and training exchanges and student exchange programs.

The Southern Illinois University System is governed by a nine-member board of trustees, which sets policy that enables the institutions to carry out established objectives. The Chancellor of The Southern Illinois University System is the chief executive officer of the system and is the primary link between the universities and the Board of Trustees. The university presidents report directly to the chancellor and are responsible for the internal operations of their institutions.

Location

The city of Carbondale is approximately 100 miles southeast of Saint Louis, Missouri, in Jackson County, the western border of which is the Mississippi River. Some of the most rugged and picturesque terrain in Illinois lies south of Carbondale. Sixty miles to the south is the historic confluence of the Ohio and Mississippi rivers; the two rivers form the border of the southern tip of Little Egypt, the name given to the 14 southernmost counties in Illinois. The region immediately surrounding Carbondale is noted for its large peach and apple orchards. Two state parks and four lakes are located within 10 miles of the campus and much of the area is a part of the Shawnee National Forest.

Campus

The University campus, comprising more than 3,290 acres immediately south of the city of Carbondale, includes a 981 acre developed portion with woods and a lake as a site for academic buildings and residence halls. The buildings are located in wooded tracts along two circular shaped campus drives, named for Lincoln and Douglas. Two beautiful features, located near the center of the campus, are a wooded tract preserved in the tradition of native forests of Southern Illinois and several buildings which formed the original campus a century ago. Approximately seventy-five permanent buildings and several hundred temporary buildings are located on the campus.



1 School of Law

In May, 1971, the Illinois Board of Higher Education published Phase III of its study, A Master Plan for Higher Education in Illinois. It was therein stated that a new law school "should be opened at Southern Illinois University in Carbondale as soon as appropriate planning, approval, and funding can be achieved." The University, which has main campuses at Carbondale and Edwardsville and which was aware of the need for more good law schools and particularly for a school in its region, immediately took steps to make the school a reality. An appropriation for this purpose was secured from the Illinois legislature in June, 1972, and shortly thereafter Hiram H. Lesar, then dean of the School of Law at Washington University, was employed as the first dean of the new school. The nucleus of an able faculty, experienced in practice and teaching, was recruited, and a first-year class was accepted to begin study in September, 1973.

Purposes

The main purpose of the School of Law is to train lawyers who will be competent to practice law now and in the future. In addition to specific legal rules, the student must learn analytic skills, research techniques, and the basic legal principles and policies underlying the current applications of those rules. He or she should also learn the basic skills of advocacy, counseling, and negotiation.

Although its graduates will be prepared to practice in any jurisdiction, it is anticipated that the School of Law by reason of its location will help to provide lawyers to fill the unmet need for legal services in Southern Illinois.

The second purpose of the School of Law stems from recognition of the social fact that lawyers are expected to provide a large part of the leadership in a wide spectrum of American life. In general terms this means that lawyers must perform two functions which go beyond rendering competent legal service. They must be prepared to serve in a "watch-dog" capacity with respect to the proper functioning of American institutions, and they must be prepared to participate in "making law." Of course, the lawyer-legislator "makes" law but so does the member of the important bar association committee charged with responsibility for drafting proposed legislation.

The second purpose of the school, then, is to assure that the leadership function performed by lawyers is carried out well. For this purpose the lawyer requires not only the whole range of skills and knowledge needed for the practice of law, but also an understanding of our institutions and a sensitivity to potential conflict areas. Two things are essential to carrying out objectives of such breadth: a curriculum which balances the course offerings as carefully as possible so that neither purpose is sacrificed to the other,

and a faculty with unusual breadth of knowledge and vision to formulate that curriculum and with an extraordinary ability to implement it, both within and without the classroom.

The third purpose of the school—which is essential to the fulfillment of the other two—is to instill in its students a proper conception of the professional responsibilities of the lawyer and the organized bar, an understanding of the nature and role of the legal profession, and knowledge and appreciation of the ethical principles by which all lawyers are bound.

It is the school's position that this kind of training can best be accomplished with a student body numbering from 350 to 450—small enough so that faculty and students may know one another and large enough to justify a faculty of sufficient size to offer all the courses that should be given in a modern law school. As soon as a new building can be provided, the school will be expanded to this size. In the meantime, an entering class of 90 will be accepted each year, and the faculty will consist of 18 full-time members to accommodate a total enrollment of about 240.

Facilities

The school occupies two, and parts of another two, adjoining buildings in the Small Group Housing Complex near the lake on the main campus. These buildings, which formerly housed fraternities, have been remodeled. One houses the law library, the second is the classroom-office building, a third has additional library facilities, a court-classroom, and faculty offices, and a fourth provides book storage capacity.

Library

The law library is well equipped to provide the research resources needed by a quality faculty and student community. More than 165,000 books are housed in the collection, which includes an almost complete inventory of primary legal sources, both state and federal. The monographic and treatise holdings in law and law-related fields are representative of the best available; moreover, a strong retrospective and current legal periodical collection has been developed. The law library maintains subscriptions to loose-leaf and other current awareness services supporting all major curricular and research efforts. Both a computer-assisted legal research system (LEXIS) and a computer-assisted instructional system (PLATO) are available in the library. A variety of sophisticated indices, including a superior card catalog and the interpretive services of law-trained librarians, provide access to the fully classified and cataloged collection. The library has been a government depository since 1978, and its government publications are fully integrated into the library collection.

The resources of over 1,650,000 volumes in the University library are readily available to law students to supplement the strong, well-staffed law school facility.

Accreditation

The SIUC School of Law has been provisionally approved by the American Bar Association.

“A law school will be granted provisional approval when it establishes that it substantially complies with the Standards for Approval of Law Schools by the American Bar Association and gives assurance that it will be in full compliance with the standards within three years after receiving provisional approval.



“A law school will be granted full approval when it establishes that it is in full compliance with the standards and it has been provisionally approved for at least two years.

“A provisionally approved school will be reinspected each year during the period of provisional approval and will be granted full approval when the Council of the Section of Legal Education and Admissions to the Bar and the House of Delegates of the American Bar Association determine that the school complies with all of the requirements of the Standards for Approval of Law Schools by the American Bar Association as they relate to full approval.

“A provisionally approved school will be considered for full approval by the House of Delegates when the council finds, after inspection, that the school meets the standards established by the American Bar Association as interpreted by the council on a basis that assures continued compliance with the letter and the spirit of the standards, with particular emphasis on a steady improvement in the quality of the educational program.

“The students at provisionally approved law schools and persons who graduate while a school is provisionally approved are entitled to the same recognition accorded to students and graduates of fully approved law schools.” (Council of the Section of Legal Education and Admissions to the Bar of the American Bar Association.)

Curriculum

The first-year curriculum includes basic courses and is required. It differs from the first-year curriculum in many, if not most, schools in that first-year legal writing is taught in small sections of 10 to 20 students each by regular full-time faculty members, and in the inclusion of a course in commercial law the second semester to familiarize students with statutory law. Second- and third-year elective courses are offered in all major fields of law.

The combined total of course work permitted in each of the areas of clinical law, moot court board, and law review may not exceed 6 semester hours.

In addition to the first-year courses, every student will be required to take at least one seminar which requires the production of a paper of the quality of a law review comment. Law review students are not required to take a seminar but may do so if they wish. A seminar generally will be an "in depth" study of one or more aspects of the regular courses or a combination of such courses. Course descriptions may be obtained from the office of the dean of the School of Law.

Up to 6 semester hours of credit for course work taken in the Graduate School may be applied, with permission of the deans of both the Graduate School and the School of Law, toward the number of hours required for the J.D. degree and toward the residence semester requirement. A student must earn a grade of *B* or better in such work for School of Law credit to be given, but this letter grade will not be reflected on a student's School of Law record, nor will it be used to compute the law grade-point average.



FIRST-YEAR COURSES

First Semester

<i>Course</i>	<i>Semester Hours</i>
Contracts	4
Introduction to Law and the Legal System	2
Torts	4
Property I	3
Legal Writing and Reasoning .	2
Legal Bibliography I	1
<i>Total</i>	16

Second Semester

Commercial Law I	3
Constitutional Law I	3
Procedure I	3
Property II	3
Criminal Law	3
Moot Court I	1
<i>Total</i>	16

SECOND- AND THIRD-YEAR COURSES

Administrative Law	3
Admiralty Law	2
Aging and the Law	2 or 3
Agricultural Law	2
Anglo-American Legal History	3
Antitrust	3
Advanced Moot Court	1-4
Business Associations I*	3
Business Associations II*	3
Commercial Law II*	4
Conflict of Laws	3
Constitutional Law II (required)*	3
Consumer Protection	3
Corrections	3
Creditors' Rights	3
Criminal Justice Administration	4
Deceptive Trade Practices	2
Drafting Legal Instruments	2 or 3
Economic Regulation of Business	3
Environmental Law	3
Estate and Gift Taxation	3
Estate Planning	3
Evidence*	3 or 4

<i>Course</i>	<i>Semester Hours</i>
Family Law	2 or 3
Federal Courts	3
Federal Income Taxation*	3
Federal Income Taxation of Business Enterprises	3
Future Interests	3
Graduate Courses	up to 6
Higher Education Law	2
Insurance	3
International Law	3
Juvenile Courts	2
Labor Law I	2
Labor Law II	2
Law Journal	1-6
Legal Bibliography II (required)*	1
Legal Clinic	1-6
Legislation	3
Mental Health Law	2 or 3
Mining Law	3
Oil and Gas Law	3
Principles of Draftsmanship	3
Problems in First Amendment Litigation	2
Problems in Probate Administration	3
Procedure II*	3
Real Estate Finance and Development	3
Remedies	3
Securities Regulation	3
Sports Law	2
State and Local Taxation** ..	2
The Legal Profession (required)	2
Transnational Business Transactions	3
Trial Advocacy	3
Trusts and Estates*	4
Water Law	2

SENIOR WRITING SEMINARS

Civil Procedure	3
Constitutional Law	3
Criminal Justice	3
Business Law	3
International Law	3
Products Liability	3
Tax Policy	3

* Normally elected in the second year

** Offered only in summer session

Admission

To be admitted as a candidate for the Juris Doctor degree, an applicant must have received a bachelor's degree or the equivalent and must have demonstrated capacity for the study of law by a satisfactory undergraduate record and satisfactory performance on the Law School Admission Test (LSAT). Forms for applying for admission may be obtained from the School of Law, Southern Illinois University at Carbondale, Carbondale, Illinois 62901.

The LSAT is administered on a nationwide basis by the Educational Testing Service, Box 944, Princeton, New Jersey 08540. The test administration dates in October or December of the applicant's final year of undergraduate study are preferred.

Applicants must also register with the Law School Data Assembly Service (LSDAS) by completing the form found in the LSAT bulletin of information and returning it to the Educational Testing Service. Applicants must have transcripts sent to LSDAS by the registrar of each college and professional or graduate school attended. The applicant's test score and evaluation of transcripts are reported to him and to the law schools he designates. The applicant should indicate on the LSAT/LSDAS matching forms that his score and evaluation are to be reported to the Southern Illinois University at Carbondale School of Law. It is not necessary that application for admission to the School of Law be made before taking the test or registering with LSDAS.

Applications for admission to the school may be filed any time after September 1, but preference will be given to applicants who file their applications prior to January 1. There is a \$10.00 application fee.

An applicant who is admitted is required to make a security deposit of \$100 by April 1, unless accepted later, when several weeks are allowed. This deposit will be credited against the first semester's tuition and fees.

Admissions are made without regard to race, color, religion, sex, national origin, age, handicap, or other factors prohibited by law.

Degree Requirements

A candidate for the Juris Doctor (J.D.) degree must satisfy the entrance requirements, fulfill the residence requirements, and satisfactorily complete a total of 90 semester hours of work for credit and must take all required courses. The required courses consist of all first year courses, Constitutional Law II, Legal Bibliography II, The Legal Profession, and a senior writing seminar.

RESIDENCE REQUIREMENT

A candidate must complete six semesters of residence, not less than the last two of which must be in this School of Law. In order to obtain residence credit for a semester, a candidate must examine in a minimum of 12 hours of work and must obtain final credit in a minimum of 10 hours of work. A candidate who either examines in or obtains final credit for fewer than the required minimum hours will be given proportionate residence credit. No credit toward residence is given in courses in which a student receives a failing grade.

LIMITATION OF COURSE HOURS

No student may register for more than 16 hours without the consent of the

dean. It is advisable for students to devote substantially their entire time to their work in the school. A student who undertakes substantial employment outside the school should reduce his course load.

ATTENDANCE AND WITHDRAWAL

Regular attendance is expected and required of each student. An instructor may exclude from any class a student who is unprepared and may, after prior notice, exclude from the final examination in any course any student whom, for reasons of lack of preparation or lack of attendance, he deems unqualified to receive credit in the course. Specific rules regulating attendance and withdrawal from courses are furnished each student prior to registration.

EXAMINATIONS

A student who has not withdrawn, or been withdrawn, from a course is expected to take the examination for that course at the regularly scheduled time. Unexcused failure to take an examination will result in a failing grade. If failure to take an examination is excused, the student may, with the permission of the dean and the instructor, take the examination after the rest of the class or at the time it is next regularly offered. Withdrawal from a non-required course must be made in accordance with University deadlines.

POOR SCHOLARSHIP RULE

Grades are given in numbers, with 75 being the average required for graduation. A student who fails to have a cumulative average of 74 at the end of the first year or 75 at the end of any other academic year will be dropped from the school for poor scholarship. A student whose average at the end of the first year is below 74 may appeal to the dean, who refers the petition to the Academic Standards Committee to recommend acceptance or denial of the petition for readmission.

Tuition and Fees

Tuition and fees in the School of Law are established by the Board of Trustees and are subject to change whenever conditions make changes necessary. Present tuition and fees for regularly enrolled law students (taking 12 or more semester hours) are \$426.65 per semester for residents and \$1,065 per semester for non-residents. Books will cost about \$200 per semester.

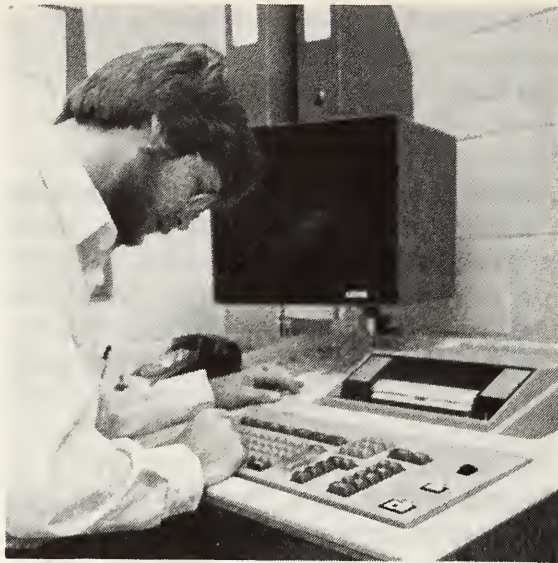
Financial Aid

Although the School of Law has limited resources for financial aid at its disposal, some assistance is available.

The University maintains an Office of Student Work and Financial Assistance through which work on campus, cooperative work-study programs, the federal work-study program, various veterans benefits (both state and federal), tuition remission scholarships, and student loans may be negotiated. For more specific information, students may contact the Office of Student Work and Financial Assistance, Woody Hall, Southern Illinois University at Carbondale, Carbondale, Illinois 62901.

In addition, there are available through the law school:

1. A number of Dean's Club scholarships, made available through contributions by the school's benefactors.



2. The Judge James O. Monroe, Jr. scholarship, made available through the Judge James O. Monroe, Jr. endowment fund established by the Madison County Bar Association.
3. The Max Turner Memorial Scholarship Fund, established in memory of an early advocate of the law school.
4. A limited number of research assistantships awarded to members of the second- and third-year classes primarily on a merit basis. These are provided from the school's state-appropriated funds. Assistantships are also awarded to each of the six members of the Moot Court Board.
5. A limited number of work opportunities in the law library and in the administrative offices of the school. These are provided from the school's state-appropriated funds.
6. A limited number of cash grants awarded from the school's activities funds derived from various sources, including application fees.

Specific instructions for applying for financial aid are mailed during the summer to entering students who indicate in their admission applications that they are interested in financial aid.

Housing

University on-campus housing is available for 4,800 single students and 576 married students. Off-campus housing is readily available. Inquiries concerning on-campus or off-campus housing may be obtained from University Housing, Washington Square, Southern Illinois University at Carbondale, Carbondale, Illinois 62901.

Honor Code

"The cornerstone of our legal system is the integrity of the individual lawyer." Preparation for law, therefore, must encourage individual integrity as well as understanding of law. The essence of an honor system is the observance by each student of high ethical standards of conduct. The system yields immediate tangible advantages of convenience—examinations are not supervised, a student's word is accepted as the truth, and ownership of personal belongings is respected; it yields also lasting intangible values of the spirit—those who have lived under an honor code are forever dissatisfied with any less rigorous standards. Students of the school have adopted an

honor code and elected an ethics council to enforce it. Copies of the code, as amended, will be sent to applicants on request and will be sent routinely to all accepted applicants.

Student Bar Association

The student body has drafted and adopted a constitution and by-laws for the Student Bar Association of which every regular law school student is a member. The association functions primarily through officers and committees elected by the membership at large and plays an integral role in the operation and governance of the law school. The students who serve as representatives to the faculty meetings are elected by the students, and those who serve on the various faculty committees are appointed by the dean from a list submitted by the president of the Student Bar Association.

Legal Aid Clinic

The school operates a legal aid clinic which works directly with inmates of various state institutions such as the Illinois state prison at Menard. The clinic has a full-time director who is also a member of the faculty and provides interested students with a number of internships and research assistantships. The work with these inmates, with the Land of Lincoln program for indigent persons, and with the public defender and appellate public defender programs, as well as with other selected programs, gives students an unusual opportunity for variety in the clinic experience. Civil as well as criminal problems are encountered. Clinic credit may not be given before a student's fourth semester, and a student may not register for more than three hours of credit prior to obtaining a student (711) license to practice in Illinois. Clinic credit must be approved by the law school Clinical Law Committee.

Law Journal

The *Southern Illinois University Law Journal* is a scholarly legal publication which is printed quarterly. The journal is managed and edited by an editorial board, with the published materials supplied by students, law professors, and other members of the legal profession. Work on the journal affords the student intensive training in legal research, analysis, and writing. All students are eligible to write for the journal and earn writing and academic credit for demonstrating superior writing skills. A small percentage of the journal candidates will be invited to be members of the editorial staff of the journal on the basis of grades at the end of the second and third semester. Membership on the editorial board is attained by completion of the writing and administrative requirements. There is an election for the offices of editor-in-chief, managing editor, articles editors, notes and comments editors, research editors, and business editor.

Moot Court

The moot court program, under the directorship of a full-time law faculty member, is a comprehensive one. It provides a required experience in appellate practice in the first year, an opportunity to pursue an advanced program in the second year, and eventual membership on the student moot court board which is selected from those interested and qualified. The school has participated in national moot court competition since 1974 and plans to continue doing so in the future. This team is selected from students enrolled in the advanced moot court course. Since 1977 students have competed in the ABA-sponsored National Appellate Advocacy Competition.

Several other national and international competitions are available to interested students.

Concurrent Degree Programs

A student who has been admitted separately to the School of Law and to the graduate program in business administration may apply for permission to study concurrently for both the Juris Doctor and the Master of Business Administration degrees. This permission must be requested from both the School of Law and the graduate program in business administration, ordinarily prior to entry into the second-year curriculum of the School of Law.

During the first academic year of concurrent work on the two degrees, the student enrolls only in the first-year law curriculum. In any subsequent academic term the student may enroll either for courses only in the School of Law or only in the Graduate School, or for courses in both units. A student registered for both law and graduate courses in the same term must enroll for a minimum of 10 semester hours in law, and 12 semester hours in total, in order to meet A.B.A. residence requirements and the academic requirements of the School of Law.

Completion of the concurrent programs requires that the student successfully complete 81 semester hours of law courses and 30 semester hours of courses that meet M.B.A. requirements. In addition, the student must fulfill all other requirements of the School of Law, the Graduate School, and the program in business administration for the J.D. and M.B.A. degrees. A student, with law school approval, may obtain similar law credit for a master's degree in other disciplines if the work follows the guidelines set out for the J.D./M.B.A. The school currently has, for instance, several students pursuing a J.D. and a Master in Public Affairs degree. It should be noted that the requirements for a master's degree are solely the concern of the discipline awarding that degree.

Placement Services

A full range of placement services is offered to students and alumni including current job listings, on-campus interviews with prospective employers, and resume assistance. Students are encouraged to begin career planning early in their law school years and to seek summer and part-time legal employment experience. The placement office will make every effort to help students identify and pursue employment opportunities.

The School of Law is firmly committed to a policy against discrimination in employment based on sex, race, religion, age, handicap, or national origin, and we expect that all employers who use our placement services will make certain that no such discrimination occurs.

By February of 1980 seventy-eight of the eighty-six members of the Class of 1979 had notified the School of Law that they were occupying law-related positions. Beginning salaries ranged from \$8,000 to \$30,000, with the median salary at \$16,000.

Research Bureau

The purposes of the research bureau are to furnish high quality service to attorneys while providing paid research and writing experience to law students. Second and third year students are eligible for participation in the organization which is administered by a student steering committee with the advice and assistance of a faculty adviser and the placement director.

2

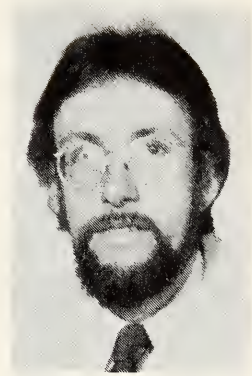
Faculty and Staff

Faculty

W. EUGENE BASANTA, B.A., J.D., LL.M.

Assistant Professor of Law

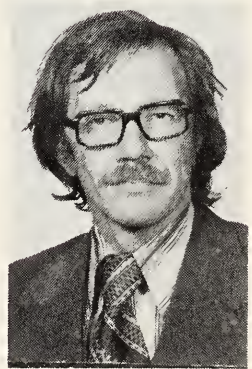
B.A. 1972, Williams College; J.D. 1975, University of Kentucky; LL.M. 1980, Temple University. Admitted to practice in Kentucky. Law clerk, Fayette County Circuit Court, 1974-75; private practice, Louisville, 1975-78; assistant professor at SIUC School of Law since 1980.



ROBERT E. BECK, B.S.L., LL.B., LL.M.

Professor of Law

B.S.L. 1958, University of Minnesota; LL.B. 1960, University of Minnesota; LL.M. 1966, New York University. Admitted to practice in Minnesota. Private practice 1960-62; assistant professor, University of North Dakota, 1962-65; visiting associate professor, University of Maine, 1965-66; associate professor, 1966-68, professor, 1968-75, Chester Fritz Distinguished Professor, 1975-76, University of North Dakota; professor at SIUC School of Law since 1976. Author of *Drainage Law, 5 Waters and Water Rights* (R. Clark ed. 1967, 1972, 1976), and articles in legal publications.



F. REED DICKERSON, A.B., LL.B., LL.M.,
J.S.D.

Visiting Professor of Law

A.B. 1931, Williams; LL.B. 1934, Harvard; LL.M. 1939, J.S.D. 1950, Columbia. Admitted to practice in Massachusetts and Illinois. Private practice 1934-38; University Fellow 1938-39, Columbia; assistant professor 1939-40, Washington University; assistant professor 1940-42, University of Pittsburgh; attorney 1942-47, Office of Price Administration; assistant legislative counsel 1947-49, U.S. House of Representatives; attorney 1949-58, Department of Defense; professor 1958-80, associate



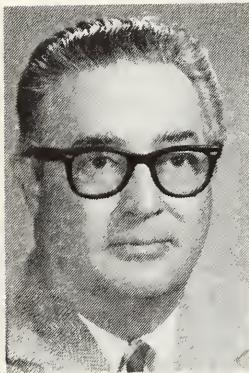
dean 1971-75, Indiana; visiting scholar 1961-62, Harvard; distinguished visiting professor, Southern Illinois University, Spring 1976. Distinguished Civilian Service Award, 1957. Author: *Cases and Materials on Legislation* (with Nutting and Elliott), 1969. Consultant, President's Committee on Consumer Interests, 1968-69; Standing Committee on Legislative Drafting, American Bar Association, since 1965; consultant, General Accounting Office, since 1973; chairman, Indiana Committee on Uniform State Laws.



ISAAK I. DORE, CAMBRIDGE SCHOOL CERTIFICATE, LL.B., LL.M., LL.M., J.S.D.

Assistant Professor of Law

Cambridge School Certificate 1968; LL.B. 1972, LL.M. 1975, University of Zambia; LL.M. 1976, J.S.D. 1978, Yale Law School. Public Prosecutor and Legal Aid Counsel, Republic of Zambia, 1972-73; Staff Development Fellow, University of Zambia, 1972-75; Sterling Fellow, Yale Law School, 1975-77; Institute for the Study of World Politics Fellow, 1977; Human Rights Officer, United Nations Office at Geneva, 1978; assistant professor at SIUC School of Law since 1979.



ROBERT H. DREHER, B.A., J.D., D.L.

Associate Professor of Clinical Law

B.A. 1936, University of Texas; J.D. 1940, University of Illinois; D.L. 1973, Oxford. Admitted to practice in Illinois and California. Special agent, F.B.I., 1940-46; private practice, 1946-67; associate professor, Center for the Study of Crime, Delinquency, and Corrections, and Department of Government, Southern Illinois University since 1967; associate professor of clinical law and director, clinical program, at SIUC School of Law since 1974.



DARRELL W. DUNHAM, B.A., J.D., LL.M.

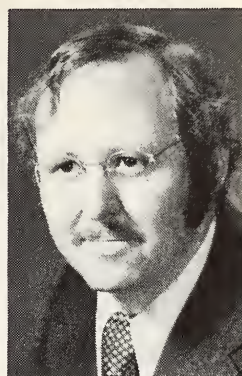
Professor of Law

B.A. 1968, J.D. 1971, Willamette University; LL.M. 1972, Harvard. Admitted to practice in Washington. Law clerk Justice Sloan, Oregon Supreme Court, 1970; associate professor of law, University of Idaho, 1972-1975; visiting professor of law, University of South Dakota, 1975-1976; visiting professor of law, University of San Diego, Summer 1976; associate professor, 1976-79, professor at SIUC School of Law since 1979. Author of articles in legal periodicals.

DONALD W. GARNER, B.A., J.D.

Associate Professor of Law

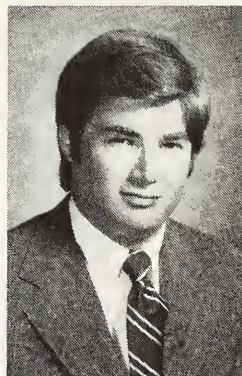
B.A. 1967, University of Texas at Arlington; J.D. 1971, University of Texas at Austin. Admitted to practice in Texas. Briefing attorney, Texas Supreme Court, 1971-72; private practice, 1972-74; assistant professor, 1974-77, associate professor at SIUC School of Law since 1977. On leave, 1980-81, University of Arkansas School of Law.



MYRON C. GRAUER, B.A., J.D., LL.M.

Assistant Professor of Law

B.A. 1971, University of Vermont; J.D. 1975, University of Pittsburgh; LL.M. 1980, Yale Law School. Admitted to practice in Pennsylvania and the District of Columbia. Private practice, Washington, D. C., 1975-78, and Pittsburgh, 1978-79. Assistant professor at SIUC School of Law since 1980.



WILLIAM A. GREGORY, B.A., M.A., J.D.

Professor of Law

B.A. 1965, Case Western Reserve University; M.A. 1966, University of Michigan; J.D. 1969, Harvard Law School. Admitted to practice in California. Private practice, Los Angeles, 1969-71; corporate practice, Los Angeles, 1971-73; assistant, then associate, professor of law, University of Tulsa, 1973-78; Paul E. Casseb visiting professor, St. Mary's University, 1976-77; associate professor, 1978, professor at SIUC School of Law since 1979. Author of articles in law reviews.



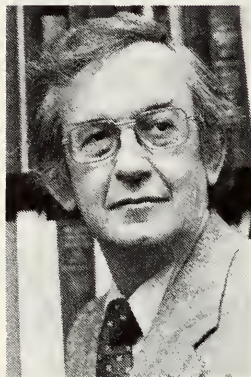
HAROLD W. HANNAH, B.S., J.D.

Adjunct Professor of Law

B.S. 1932, J.D. 1935, University of Illinois. Director, Division of Special Services for War Veterans, 1945-47; associate professor, agricultural law and administration, University of Illinois, 1935-41 and 1947-54; dean of resident instruction, College of Agriculture, 1954-59; group leader of contract team in India, 1955-57; professor of agricultural and veterinary medicine law, University of Illinois, 1959-71; private practice since 1971; lecturer and adjunct professor at SIUC School of Law since 1975. U.S. Army, 1941-45. Author of *Law on the Farm* (MacMillan, 1948); *Law and Court Decisions on Agriculture* (with Krausz, Stipes Publishing Co., 1968); *Law for the Veterinarian and Livestock Owner* (Interstate, 1974); *Resource Book for Universities in Developing Countries* (University of Illinois Press, 1966);



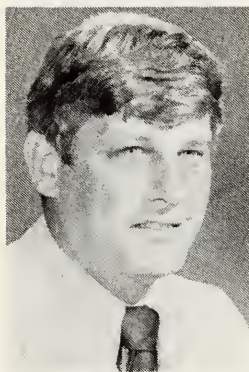
The Legal Base for Universities in Developing Countries (with Caughey, University of Illinois Press, 1967); *Law and the Farmer* (revision of Buescher, Springer Publishing Company 1975).



DAN HOPSON, A.B., LL.B., LL.M.

Professor of Law and Dean

A.B. 1951, LL.B. 1953, University of Kansas; LL.M. 1954, Yale Law School; 1954-55, Cambridge University, England. Assistant professor, 1955-59, assistant dean, 1957-59, associate professor, 1959-63, University of Kansas School of Law; research associate, Yale Law School, 1959-60; professor of law, University of Kansas, 1963-67; professor of law, Indiana University 1967-80; associate dean of the faculties, Indiana University, Bloomington, 1974-78; dean and professor of law at SIUC School of Law since 1980. Author of *Lawyers and Their Work* (with Quintin Johnstone, Bobbs-Merrill, 1967); *Economics of Indiana Law Practice* (with James H. Grund, Indiana Bar Association, 1971), and of articles in various legal periodicals.



JOHN W. HUFFMAN, B.S., LL.B.

Adjunct Professor of Law

B.S. 1959, Eastern Illinois University; LL.B. 1964, University of Illinois. Private practice in Illinois, 1964-70; dean for judicial council, Kent State University, 1970-72; legal counsel, Southern Illinois University 1972-76; adjunct professor of law at SIUC School of Law since 1975.



DAVID C. JOHNSON, B.S., C.P.A., J.D., LL.M.

Professor of Law and Associate Dean

B.S. 1959, C.P.A. 1959, J.D., 1961, University of North Dakota; LL.M. 1964, University of Pennsylvania. Admitted to practice in North Dakota and Georgia. U.S. Army Captain, 1961-63. Graduate fellow 1964, University of Pennsylvania; assistant professor 1964-67, associate professor 1967-70, professor 1970-71, Emory University; visiting professor 1971-72, professor 1972-75, University of Oklahoma; professor at SIUC School of Law since 1975. Author of *Georgia Landlord and Tenant Law* (Encyclopedia of Georgia Law, 1968), and of articles in various legal periodicals.

ELIZABETH S. KELLY, B.A., J.D.

Assistant Professor of Law and Library Director

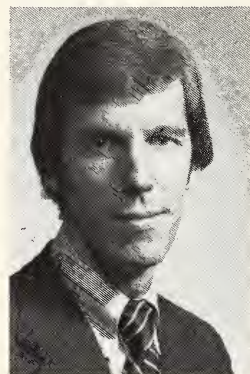
B.A. 1958, College of St. Catherine; J.D. 1978, Southern Illinois University. Academic library experience, 1958-73; technical services librarian, 1973-75, reader services librarian, 1975-77, acting law librarian, 1978, librarian and assistant professor at SIUC School of Law since 1978.



EDWARD J. KIONKA, B.S., J.D., LL.M.

Professor of Law

B.S. 1960, J.D. 1962, University of Illinois; LL.M. 1974, Columbia University. Admitted to practice in Illinois and Missouri. Private practice 1962-64, 1971-72, 1975-76. Lt. Cdr., USNR. Teaching associate, Columbia University, Fall 1962; instructor in law, University of Michigan, 1964-65; director, Illinois Institute for Continuing Legal Education, 1965-67; assistant dean and assistant professor of law, University of Illinois, 1967-71; special counsel, General Government Committee, Sixth Illinois Constitutional Convention, 1970; Krulewitch Fellow, Columbia University, 1972-73; associate professor, 1973-75, 1976-77, adjunct professor, 1975-76, professor at SIUC School of Law since 1977; visiting professor, Washington University, 1979-80. Author of *Torts in a Nutshell: Injuries to Persons and Property*, articles in legal periodicals. Editor of *Illinois Civil Practice After Trial* (Illinois Institute for Continuing Legal Education, 1970, 1976).



MARK R. LEE

Assistant Professor of Law

B.A. 1971, Yale University; J.D. 1974, University of Texas, Austin. Admitted to practice in Texas. Assistant attorney general, Austin, Texas, 1974-75; attorney, Department of Justice, Washington, D.C., 1975-76; instructor, University of Miami, 1976-77; assistant professor at SIUC School of Law since 1977.



HIRAM H. LESAR, A.B., J.D., J.S.D.

Professor of Law

A.B. 1934, J.D. 1936, University of Illinois; J.S.D. 1938, Yale. Admitted to practice in Illinois, Missouri, U.S. Supreme Court. Sterling Fellow, Yale, 1936-37; assistant professor 1937-40, associate professor 1940-42, University of Kansas; senior attorney 1942, principal attorney



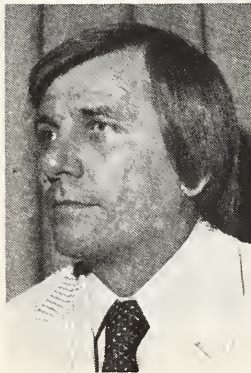
1943, Board of Legal Examiners, Washington, D.C.; U.S. Navy 1944-46 (Lt. Cdr.); associate professor 1946-48, professor 1948-57, University of Missouri; professor 1957-60, dean and Zumbalen professor 1960-72, Washington University; dean and professor of law at SIUC School of Law 1972-80; interim president 1974; acting president 1979-80. Summer visiting professor: Illinois, 1947; Indiana, 1952; Southern California, 1959; North Carolina, 1961; New York University, 1965. Reporter, Special Study Committee on the Judiciary (Mo.), 1966-67. Author: *Landlord and Tenant* (Little-Brown, 1957); Vol. I Pt. 3 of *American Law of Property* (Casner ed., Little-Brown, 1952, Supp. 1977); articles in *Annual Survey of American Law*, 1953, 1955-70, in various legal periodicals, and in the *Encyclopaedia Britannica*.



T. RICHARD MAGER, B.A., J.D.

Adjunct Professor of Law

B.A. 1956, J.D. 1960, University of Missouri. Admitted to practice in Illinois and Missouri. Lecturer in law, 1963-66, University of Missouri; private practice, 1963-64; assistant prosecuting attorney, 1964, Boone County, Missouri; assistant counsel 1964-67 and counsel 1971, The Curators, University of Missouri; legal counsel 1971-72, Vice President for Development and Services 1972-75, Southern Illinois University; associate professor 1975-78, adjunct professor at SIUC School of Law since 1978.



BRIAN E. MATTIS, B.S.B.A., J.D., LL.M.

Professor of Law

B.S.B.A. 1960, University of Florida; J.D. 1968, University of Miami; LL.M. 1969, Yale. Admitted to practice in Florida. Sterling Fellow, Yale, 1968-69; associate professor 1969-72, professor 1972-74, University of Nebraska; professor at SIUC School of Law since 1974. Summer: University of Nebraska, 1970, 1972, 1973. Author of articles in legal publications.



TAYLOR MATTIS, B.A., J.D., LL.M.

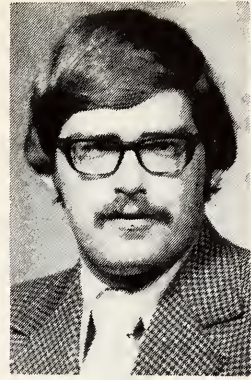
Professor of Law

B.A. 1960, University of Alabama; J.D. 1963, University of Miami; LL.M. 1969, Yale. Admitted to practice in Florida, Nebraska, and Illinois. Private practice, 1963-66; law clerk, U.S. District Judge Ematt Choate, 1966-68; Sterling Fellow, Yale, 1968-69; attorney, Nebraska Appellate Justice Project, 1972-74; associate professor, 1974-77, professor at SIUC School of Law since 1977. Author of articles in legal periodicals. On leave 1980-81.

THOMAS P. POLITYKA, B.A., J.D.

Assistant Professor of Law

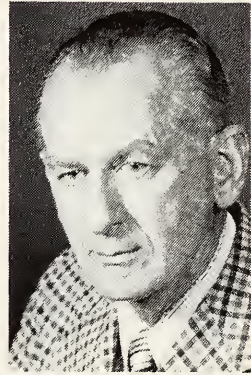
B.A. 1971, J.D. 1973, University of Nebraska. Admitted to practice in Nebraska. Law clerk, U.S. District Judge Robert Van Pelt, 1973-74; assistant professor at SIUC School of Law since 1974.



THOMAS G. ROADY, JR., A.B., M.A., J.D.

Professor of Law

A.B. 1940, M.A. 1949, J.D. 1948, University of Illinois. Admitted to practice in Illinois and Tennessee. AUS-AC, 1942-46, Maj.; Lt. Col., U.S.A.F. Res. University Fellow, Columbia University, 1948-49; assistant professor 1949-50, associate professor 1950-51, professor 1951-52, University of Tennessee; associate professor and assistant dean, Washington University, 1952-53; private practice in Illinois 1952-56; visiting professor, University of Missouri, 1954; professor, Vanderbilt University, 1956-68; professor, University of Tennessee, 1968-73; associate dean 1973-77, professor at SIUC School of Law since 1973. Editor of *Professional Negligence* (with Andersen, 1960); *Essays on Procedures and Evidence* (with Covington, 1961); *Selected Problems in the Law of Corporate Practice* (with Andersen, 1960). Author of articles in legal periodicals.



ROBERT H. SKILTON, A.B., M.A., LL.B., Ph.D.

Visiting Professor of Law

A.B. 1930, M.A. 1931, LL.B. 1934, Ph.D. 1943, University of Pennsylvania. Admitted to practice in Pennsylvania and Wisconsin. Private practice, 1934-37; instructor, then associate professor, 1937-53, Wharton School, University of Pennsylvania; associate professor, then professor, Law School, University of Wisconsin, since 1953, professor emeritus since 1976; distinguished visiting professor, SIUC School of Law, Spring, 1976; distinguished visiting professor, McGeorge School of Law, 1977-78; visiting professor, SIUC School of Law, 1978-79, second semester 1979-80 and 1980-81. Author of *Government and the Mortgage Debtor* (1944); *Industrial Discipline and the Arbitration Process* (1952), and numerous articles in the field of commercial law and other subjects.





EDWARD L. WELCH, B.S., J.D.

Adjunct Professor of Law

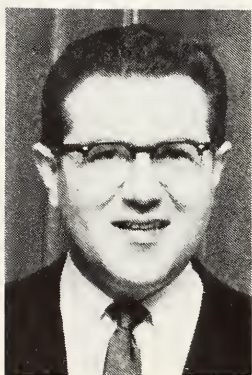
B.S. 1957, St. Louis University; J.D. 1960, Washington University. In private practice, East St. Louis and Edwardsville. Labor attorney with Allis-Chalmers and National Labor Relations Board, 1960-67; lecturer and adjunct professor of law at SIUC School of Law since 1973.



MARGARET J. WHITLEY, B.S.W., J.D.

Assistant Professor of Law

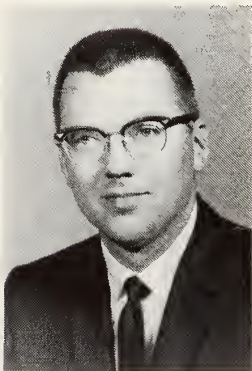
B.S.W. 1974, University of Kansas; J.D. 1977, Washington University School of Law. Admitted to practice in Missouri, 1977. Assistant attorney general, state of Missouri, 1977-78; assistant professor at SIUC School of Law since 1978.

Visiting Faculty, Summer, 1980

FRANK W. MILLER, B.A., LL.B., S.J.D.

Visiting Professor of Law

B.A. 1946, LL.B. 1948, S.J.D. 1954, University of Wisconsin. Admitted to practice in Wisconsin. AUS 1942-45. Graduate fellow 1948, University of Wisconsin; assistant professor 1948-53, associate professor 1953-56, professor 1956-62, Coles professor of criminal law and administration 1962-65, James Carr professor of criminal jurisprudence since 1965, Washington University. Author of *The Test of Factual Causation in Negligence and Strict Liability Cases* (with Becht, Washington University Press, 1961); *Prosecution: The Decision to Charge a Suspect with a Crime* (Little, Brown, 1969); *Criminal Justice Administration and Related Processes* (with Dawson, Dix and Parnas, Foundation Press, 1971, successor edition, 1976); *The Juvenile Justice Process* (Foundation Press, 1976); *The Mental Health Process* (Foundation Press, 1976); *Sentencing and the Correctional Process* (Foundation Press, 1976); articles in legal periodicals and in the *Encyclopedia Americana*.



R. DALE SWIHART, A.B., J.D.

Visiting Professor of Law

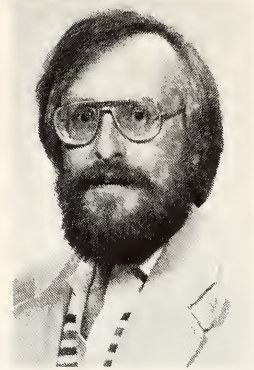
A.B. 1953, DePauw University; J.D. 1957, Indiana University. Admitted to practice in Indiana. Teaching associate, Indiana University, 1957-58; assistant and associate professor, University of New Mexico, 1958-64; associate professor, University of Texas, 1964-65; associate professor and professor, Washington University, since 1965. Author of articles in legal periodicals.

Clinical Law Program

ROBERT H. DREHER, B.A., J.D., D.L.,
Associate Professor of Clinical Law and Director

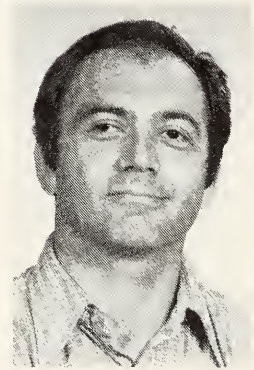
RICHARD J. HABIGER, B.A., J.D.
Staff Attorney

B.A. 1963, Rockhurst College; J.D. 1970, University of Missouri at Kansas City. Admitted to practice in Missouri and Illinois. Reginald Heber Smith Fellow, Legal Aid and Defender's Society of Kansas City, 1970-72; National Juvenile Law Center, St. Louis University, 1972-75; Staff attorney, Clinical Law Program, SIUC School of Law since 1975.



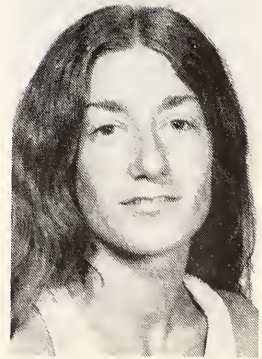
ROBERT JACOBINI, B.A., J.D.
Staff Attorney

B.A. 1969, University of Illinois; J.D. 1979, Southern Illinois University at Carbondale. Admitted to practice in Illinois. National Defense Fellow, 1972-73; legal consultant, SIUC School of Technical Careers, 1979. Staff attorney, Clinical Law Program, SIUC School of Law since 1980.



JANIS M. SUSLER, B.A., J.D.
Staff Attorney

B.A. 1971, University of Illinois; J.D. 1975, University of Illinois. Admitted to practice in Illinois. Staff attorney for Shackelford Community Institute Legal Service, Champaign, 1976. Staff attorney, Clinical Law Program, SIUC School of Law since 1976.



Law Library Staff

ELIZABETH S. KELLY, B.A., J.D., Assistant Professor of Law and Library Director

ELIZABETH W. MATTHEWS, B.A., M.S., Ph.D., Associate Professor in the Law Library and Librarian for Cataloging

ELIZABETH ANN PUCKETT, B.A., M.S.L.S., J.D., Assistant Professor in the Law Library and Assistant Librarian for Reader Services

HEIJA RYOO, B.B.A., M.L.S., Instructor in the Law Library and Librarian for Acquisitions.

LAUREL ANNE WENDT, B.A., M.L.S., J.D., Assistant Professor in the Law Library and Librarian for Reader Services

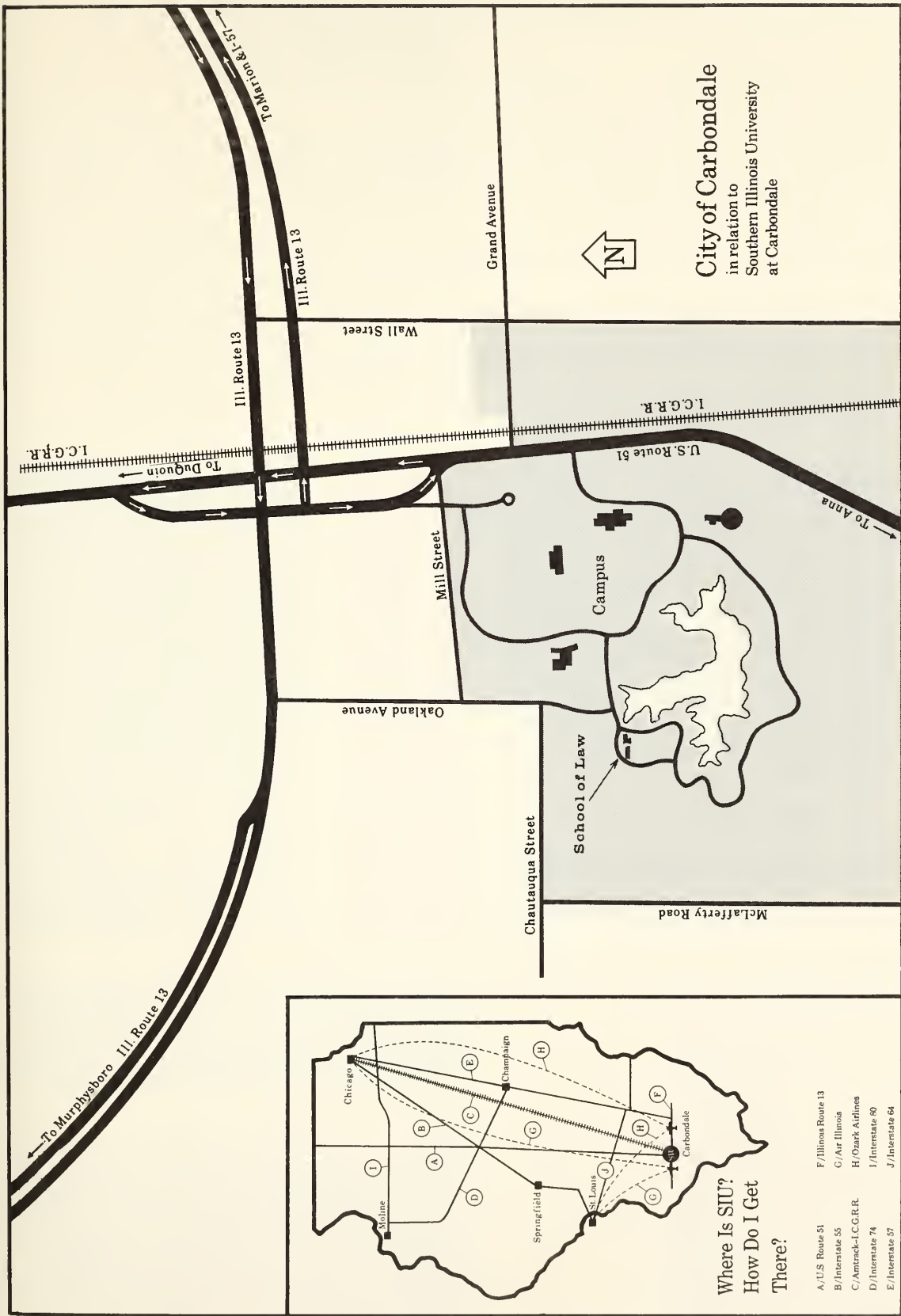
Administrative Staff

NORMA M. BROWN, B.A., *Registrar*

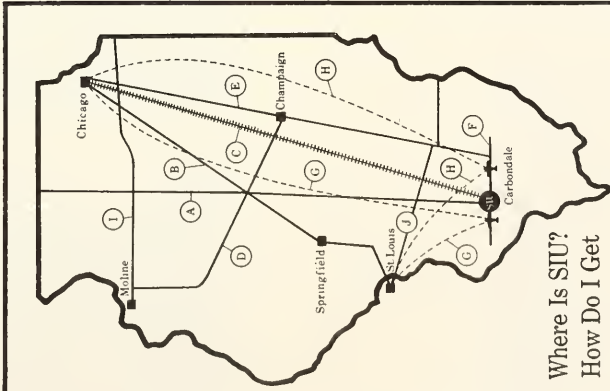
RITA L. MOSS, *Placement Director*

BEULAH M. NEHRING, *Admissions Secretary*

BOBBIE M. THOMPSON, *Secretary to the Dean*



City of Carbondale
 in relation to
 Southern Illinois University
 at Carbondale



Where Is SIU?
 How Do I Get
 There?

- A / U.S. Route 51
- B / Interstate 55
- C / Amtrak-I.C.G.R.R.
- D / Interstate 74
- E / Interstate 57
- F / Illinois Route 13
- G / Ar. Illinois
- H / Ozark Airlines
- I / Interstate 80
- J / Interstate 64

