

1977

## 1977-1978 Southern Illinois University Bulletin Carbondale Campus (School of Law Catalog)

Southern Illinois University Carbondale

Follow this and additional works at: [http://opensiuc.lib.siu.edu/ua\\_bcc](http://opensiuc.lib.siu.edu/ua_bcc)

---

### Recommended Citation

, . "1977-1978 Southern Illinois University Bulletin Carbondale Campus (School of Law Catalog)." (Jan 1977).

This Article is brought to you for free and open access by the University Archives at OpenSIUC. It has been accepted for inclusion in SIU Bulletins and Course Catalogs by an authorized administrator of OpenSIUC. For more information, please contact [opensiuc@lib.siu.edu](mailto:opensiuc@lib.siu.edu).

# Southern Illinois University Bulletin

1977-1978 School of Law Catalog

Southern Illinois University  
at Carbondale



Southern Illinois University at Carbondale is in compliance with Title IX of the Education Amendments of 1972. In part, Title IX mandates that no person shall, on the basis of sex, be excluded from participation in, be denied the benefits of, or be subjected to discrimination under any education program or activity receiving federal financial assistance. Inquiries concerning the application of Title IX regulations may be directed to Dr. Mary Helen Gasser or Mr. Richard Hayes, University Affirmative Action Office, Anthony Hall, Room 104, telephone 536-6618.



**Southern  
Illinois  
University  
Bulletin**

**1977-1978  
School of Law Catalog**

**Southern Illinois University  
at Carbondale**

**Southern Illinois University Bulletin**

**Volume 19, Number 5, August 1977**

**Second-class postage paid at  
Carbondale, Illinois 62901.**

**Published by  
Southern Illinois University  
at Carbondale,  
Carbondale, Illinois 62901,  
five times per year, in June, July,  
August, October, and November.**

# This Issue

*This issue of the Southern Illinois University Bulletin* covers in detail questions concerning the School of Law program of Southern Illinois University at Carbondale. (It supersedes Vol. 18, No. 5.) The University reserves the right to change information contained herein on matters other than curricular requirements without notice when circumstances warrant such action, and apply the change to all students without regard as to their date of entry into college.

*Other issues of the Southern Illinois University Bulletin*, which may be obtained free from University Graphics, Southern Illinois University, Carbondale, Illinois 62901, are listed below.

Graduate Catalog

Undergraduate Catalog

Schedule of Classes (fall, spring, or summer)

# Table of Contents

<i>Board of Trustees and Officers of Administration</i> .....	iv
<i>School of Law Calendar</i> .....	v
<i>University General Information</i> .....	1
History .....	1
Location .....	1
Campus .....	2
<b>1 School of Law</b> .....	<b>3</b>
Purposes .....	3
Facilities .....	4
Library .....	5
Accreditation .....	5
Curriculum .....	6
First-Year Courses .....	7
Second- and Third-Year Courses .....	7
Admission .....	8
Degree Requirements .....	9
Residence Requirement .....	10
Limitation of Course Hours .....	10
Attendance and Withdrawal .....	10
Examinations .....	10
Poor Scholarship Rule .....	10
Tuition and Fees .....	10
Financial Aid .....	10
Housing .....	11
Honor Code .....	11
Student Bar Association .....	12
Legal Aid Clinic .....	12
Law Journal .....	12
Moot Court .....	12
Concurrent J.D. and M.B.A. Programs .....	12
Placement Services .....	13
Research Bureau .....	13
<b>2 Faculty and Staff</b> .....	<b>15</b>
Faculty .....	15
Law Library Staff .....	23
Administrative Staff .....	23

# Board of Trustees and Officers of Administration

<b>Board of Trustees of Southern Illinois University</b>	<i>Term Expires</i>
HARRIS ROWE, <i>Chairman</i> , Jacksonville	1983
IVAN A. ELLIOTT, JR., <i>Vice-Chairman</i> , Carmi	1979
MARGARET BLACKSHERE, <i>Secretary</i> , Madison	1979
ELIZABETH BYRNES, Carbondale	1978
JAMES M. GRANDONE, Edwardsville	1978
WAYNE HEBERER, Belleville	1981
CAROL KIMMEL, Rock Island	1983
WILLIAM R. NORWOOD, Elk Grove Village	1983
A. D. VAN METER, JR., Springfield	1981
JAMES M. BROWN, <i>General Secretary of the Southern Illinois University System</i>	

## **Officers of Administration, Southern Illinois University at Carbondale**

WARREN W. BRANDT, *President*  
FRANK E. HORTON, *Vice President for Academic Affairs and Research*  
HIRAM H. LESAR, *Dean*, School of Law  
DAVID C. JOHNSON, *Associate Dean*, School of Law

# School of Law Calendar

## **Summer Session, 1977**

Classes Begin	Monday, June 13
Independence Day Holiday	Monday, July 4
Classes End	Tuesday, August 2
Final Examinations	Wednesday, August 3–Friday, August 5 (inclusive)
Commencement	Saturday, August 6

## **Fall Semester, 1977**

Orientation	Friday, August 19–Sunday, August 21 (inclusive)
Classes Begin	Monday, August 22
Labor Day Holiday	Monday, September 5
Thanksgiving Vacation	Saturday, November 19–Sunday, November 27 (inclusive)
Classes End	Tuesday, December 6
Final Examinations	Wednesday, December 7–Saturday, December 17 (inclusive)

## **Spring Semester, 1978**

Classes Begin	Wednesday, January 11
Washington's Birthday Holiday	Monday, February 20
Spring Vacation	Saturday, March 18–Sunday, March 26 (inclusive)
Classes End	Friday, April 28
Final Examinations	Monday, May 1–Friday, May 12 (inclusive)
Commencement	Saturday, May 13



Printed in London  
by [illegible]



# University General Information

## History

Chartered in 1869 with instruction initiated in 1874, Southern Illinois University at Carbondale has entered its second hundred years in operation. Established in 1869 as Southern Illinois Normal University, the school acquired the name, Southern Illinois University, in 1947 by legislative action. At the outset of the 1970's Southern Illinois University became a single state system with two universities: Southern Illinois University at Carbondale and Southern Illinois University at Edwardsville. Southern Illinois University at Carbondale also has a medical school campus at Springfield. The institution first operated as a two-year normal school but in 1907 became a four-year, degree-granting institution although continuing its two year course into the 1930's. It was in 1943 that the school was transformed from a teacher-training institution into a university, thus giving official recognition to the area's demand for diversified training and service. Graduate work was instituted in 1943, with the first Ph.D. degrees granted in 1955. There has been diversification of programs at the undergraduate level with the establishment of the Colleges of Communications and Fine Arts, Education, Business and Administration, Human Resources, Liberal Arts, and Science and the Schools of Agriculture, Engineering and Technology, Technical Careers, and programs in University Studies. In addition to expansion of programs within the Graduate School, professional schools have been established in medicine and law.

In keeping with the state's master plan, the University's objective is to provide a comprehensive educational program meeting as many individual student needs as possible. While providing excellent instruction in a broad range of traditional programs, it also helps individual students design special programs when their interests are directed toward more individualized curricula. The University comprises a faculty and the facilities to offer general and professional training ranging from two-year associate degrees to doctoral programs, as well as certificate and non-degree programs meeting the needs of persons not interested in degree education.

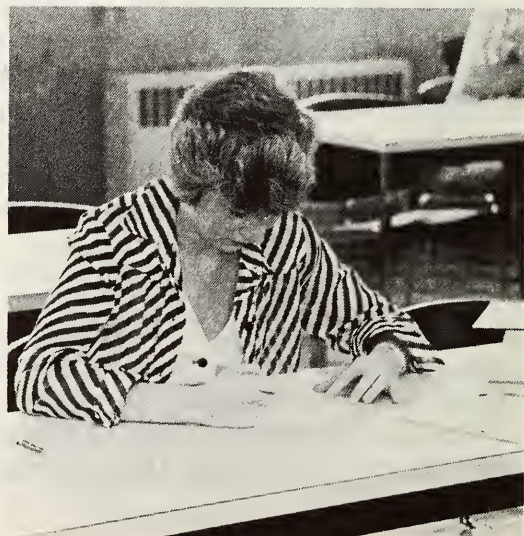
## Location

The city of Carbondale is approximately 100 miles southeast of Saint Louis, Missouri, in Jackson County, the western border of which is the Mississippi River. Some of the most rugged and picturesque terrain in Illinois lies south of Carbondale. Sixty miles to the south is the historic confluence of the Ohio and Mississippi rivers; the two rivers forming the border of the southern tip

of Little Egypt, the name given to the fourteen southernmost counties in Illinois. The region immediately surrounding Carbondale is noted for its large peach and apple orchards. Two state parks and four lakes are located within ten miles of the campus and much of the area is a part of the Shawnee National Forest.

### **Campus**

The University campus, comprising more than 3,290 acres immediately south of the city of Carbondale, includes a 981 acre developed portion with woods and a lake as a site for academic buildings and residence halls. The buildings are located in wooded tracts along two circular shaped campus drives, named for Lincoln and Douglas. Two beautiful features, located near the center of the campus, are a wooded tract preserved in the tradition of native forests of Southern Illinois and several buildings which formed the original campus a century ago. Approximately seventy-five permanent buildings and several hundred temporary buildings are located on the campus.



# 1 School of Law

In May, 1971, the Illinois Board of Higher Education published Phase III of its study, A Master Plan for Higher Education in Illinois. It was therein stated that a new law school "should be opened at Southern Illinois University in Carbondale as soon as appropriate planning, approval, and funding can be achieved." The University, which has main campuses at Carbondale and Edwardsville and which was aware of the need for more good law schools and particularly for a school in its region, immediately took steps to make the school a reality. An appropriation for this purpose was secured from the Illinois legislature in June, 1972, and shortly thereafter Hiram H. Lesar, then dean of the School of Law at Washington University, was employed as the first dean of the new school. The nucleus of an able faculty, experienced in practice and teaching, was recruited, and a first-year class was accepted to begin study in September, 1973.

## **Purposes**

The main purpose of the School of Law is to train lawyers who will be competent to practice law now and in the future. In addition to specific legal rules, the student must learn analytic skills, research techniques, and the basic legal principles and policies underlying the current applications of those rules. He or she should also learn the basic skills of advocacy, counseling, and negotiation.

Although its graduates will be prepared to practice in any jurisdiction, it is anticipated that the School of Law by reason of its location will help to provide lawyers to fill the unmet need for legal services in Southern Illinois.

The second purpose of the School of Law stems from recognition of the social fact that lawyers are expected to provide a large part of the leadership in a wide spectrum of American life. In general terms this means that lawyers must perform two functions which go beyond rendering competent legal service. They must be prepared to serve in a "watch-dog" capacity with respect to the proper functioning of American institutions, and they must be prepared to participate in "making law." Of course, the lawyer-legislator "makes" law but so does the member of the important bar association committee charged with responsibility for drafting proposed legislation.

The second purpose of the school, then, is to assure that the leadership function performed by lawyers is carried out well. For this purpose the lawyer requires not only the whole range of skills and knowledge needed for the practice of law, but also an understanding of our institutions and a sensitivity to potential conflict areas. Two things are essential to carrying

out objectives of such breadth: a curriculum which balances the course offerings as carefully as possible so that neither purpose is sacrificed to the other, and a faculty with unusual breadth of knowledge and vision to formulate that curriculum and with an extraordinary ability to implement it, both within and without the classroom.

The third purpose of the school—which is essential to the fulfillment of the other two—is to instill in its students a proper conception of the professional responsibilities of the lawyer and the organized bar, an understanding of the nature and role of the legal profession, and knowledge and appreciation of the ethical principles by which all lawyers are bound.

It is the school's position that this kind of training can best be accomplished with a student body numbering from 350 to 450—small enough so that faculty and students may know one another and large enough to justify a faculty of sufficient size to offer all the courses that should be given in a modern law school. As soon as a new building can be provided, the school will be expanded to this size. In the meantime, an entering class of 90 will be accepted each year, and the faculty will consist of 18 full-time members to accommodate a total enrollment of about 240.

### **Facilities**

The school occupies two, and part of another two, adjoining buildings in the Small Group Housing Complex near the lake on the main campus. These buildings, which formerly housed fraternities, have been remodeled. One



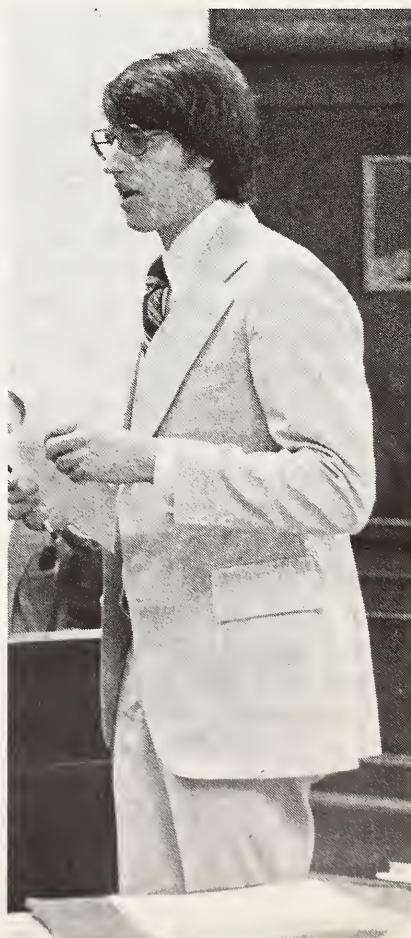
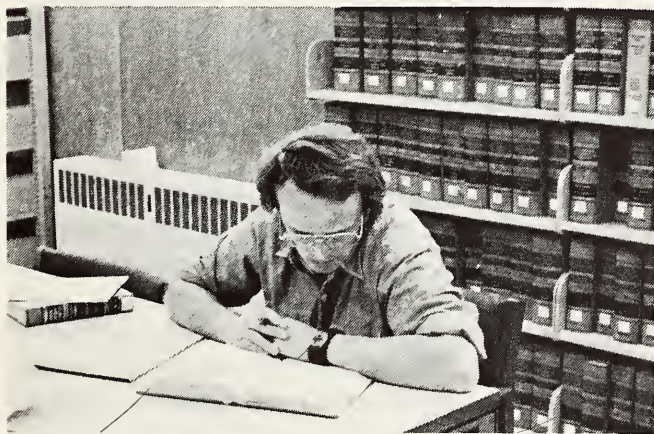
houses the law library, the second is the classroom-office building, a third has additional library facilities, a court-classroom, and faculty offices, and a fourth provides book storage capacity.

**Library**

The law library, beginning with a nucleus of 35,000 volumes transferred to it by the university library, has grown to over 72,000 bound volumes with an additional 43,000 volume equivalent in microform. Included in the library is an almost complete collection of primary legal sources both state and federal. Moreover, a strong retrospective and current legal periodical collection has been developed. The monographic and treatise holdings in law and law-related fields are representative of the best currently available, and major efforts are underway to substantially increase the library's resources in these areas. Subscriptions to looseleaf and other current awareness services supporting all major curricular and research programs have been established. Additionally, the services and collection of the 1,600,000 volume university library are readily available to all law students. With these resources, and a professional and technical support staff numbering thirteen members, the library is well prepared to meet the needs of modern legal education.

**Accreditation**

The SIU School of Law has been provisionally approved by the American Bar Association.



“A law school will be granted provisional approval when it establishes that it substantially complies with the Standards for Approval of Law Schools by the American Bar Association and gives assurance that it will be in full compliance with the standards within three years after receiving provisional approval.

“A law school will be granted full approval when it establishes that it is in full compliance with the standards and it has been provisionally approved for at least two years.

“A provisionally approved school will be reinspected each year during the period of provisional approval and will be granted full approval when the Council of the Section of Legal Education and Admissions to the Bar and the House of Delegates of the American Bar Association determine that the school complies with all of the requirements of the Standards for Approval of Law Schools by the American Bar Association as they relate to full approval.

“A provisionally approved school will be considered for full approval by the House of Delegates when the council finds, after inspection, that the school meets the standards established by the American Bar Association as interpreted by the council on a basis that assures continued compliance with the letter and the spirit of the standards, with particular emphasis on a steady improvement in the quality of the educational program.

“The students at provisionally approved law schools and persons who graduate while a school is provisionally approved are entitled to the same recognition accorded to students and graduates of fully approved law schools.” (Council of the Section of Legal Education and Admissions to the Bar of the American Bar Association.)

## **Curriculum**

The first-year curriculum includes basic courses and is required. It differs from the first-year curriculum in many, if not most, schools in that first-year legal writing is taught in small sections of 10 to 20 students each by regular full-time faculty members, and in the inclusion of a course in commercial law the second semester to familiarize students with statutory law. Second- and third-year elective courses are offered in all major fields of law.

The combined total of course work permitted in each of the areas of clinical law, moot court board, and law review may not exceed 6 semester hours.

In addition to the first-year courses, every student will be required to take at least one seminar which requires the production of a paper of the quality of a law review comment. Law review students are not required to take a seminar but may do so if they wish. A seminar generally will be an “in depth” study of one or more aspects of the regular courses or a combination of such courses.

Up to 6 semester hours of credit for course work taken in the Graduate School may be applied, with permission of the deans of both the Graduate School and the School of Law, toward the number of hours required for the J.D. degree and toward the residence semester requirement. A student must earn a grade of *B* or better in such work for School of Law credit to be given, but this letter grade will not be reflected on a student’s School of Law record, nor will it be used to compute the law grade-point average.

FIRST-YEAR COURSES

First Semester

<i>Course</i>	<i>Semester Hours</i>
Contracts .....	4
Legal Process .....	3
Torts .....	4
Property IA .....	3
Legal Writing .....	1
Legal Bibliography .....	1
<b>Total</b>	<b>16</b>

Second Semester

Commercial Law I .....	3
Constitutional Law .....	3
Procedure I .....	3
Property IB .....	3
Criminal Law .....	3
Moot Court I .....	1
<b>Total</b>	<b>16</b>

SECOND- AND THIRD-YEAR COURSES

Administrative Law .....	3
Admiralty Law .....	2
Agricultural Law .....	2
Antitrust .....	3
Advanced Moot Court .....	1-4
Business Associations I* .....	3
Business Associations II* .....	3
Commercial Law II* .....	3
Comparative Law** .....	3
Conflict of Laws .....	3
Constitutional Law II* .....	3
Corrections .....	3
Creditors' Rights .....	3
Criminal Justice Administration I .....	3
Criminal Justice Administration II .....	3
Deceptive Trade Practices ...	2
Drafting Legal Instruments***	3
Environmental Law .....	3
Estate and Gift Taxation ....	3
Estate Planning .....	3
Evidence**** .....	3
Family Law .....	3
Federal Courts .....	3
Federal Income Taxation* ...	3
Federal Income Taxation of Business Enterprises .....	3
Future Interests .....	3

<i>Course</i>	<i>Semester Hours</i>
Graduate Courses .....	up to 6
Higher Education Law .....	2
Insurance** .....	2
International Law .....	3
Juvenile Courts**** .....	2
Labor Law I .....	2
Labor Law II .....	2
Legal Clinic*** .....	0-6
Legal History .....	2
Legal Research and Writing ..	1-6
Legislation .....	3
Mental Health Law .....	3
Natural Resources Law .....	3
Problems in First Amendment Litigation .....	2
Procedure II* .....	3
Real Estate Finance and Development .....	4
Remedies .....	3
Securities Regulation .....	3
State and Local Taxation****	3
The Competitive Process .....	4
The Legal Profession .....	2
Transnational Business Transactions .....	3
Trial Advocacy .....	3
Trusts and Estates I* .....	3
Trusts and Estates II* .....	2
Water Law .....	2

SEMINARS

Civil and Political Rights ....	3
Community Mental Health Law	3
Consumer Protection .....	3
Constitutional Litigation .....	3
Current Problems in Torts ....	3
Natural Resources and Environmental Law .....	3
Products Liability .....	2
Selected Problems in Criminal Procedure .....	3
State and Local Government ..	3
Tax Policy**** .....	3
Theories of Constitutional Adjudication .....	3
Transnational Business Transactions .....	3

\* Normally elected in the second year

\*\* May not be offered in 1977-78

\*\*\* Offered in summer session, 1977

\*\*\*\* Offered only in summer session



### Admission

To be admitted as a candidate for the Juris Doctor degree, an applicant must have received a bachelor's degree or the equivalent and must have demonstrated capacity for the study of law by a satisfactory undergraduate record and satisfactory performance on the Law School Admission Test (LSAT). Forms for applying for admission may be obtained from the School of Law, Southern Illinois University at Carbondale, Carbondale, Illinois 62901.

The LSAT is administered on a nationwide basis by the Educational Testing Service, Box 944, Princeton, New Jersey 08540. The test administration dates in July, October, and December of the applicant's final year of undergraduate study are preferred.

Applicants must also register with the Law School Data Assembly Service (LSDAS) by completing the form found in the LSAT bulletin of information and returning it to the Educational Testing Service. Applicants must have transcripts sent to LSDAS by the registrar of each college and professional or graduate school attended. The applicant's test score and evaluation of transcripts are reported to him and to the law schools he designates. The applicant should indicate on the LSAT/LSDAS forms that his score and evaluation are to be reported to the Southern Illinois University at Carbon-



dale School of Law. It is not necessary that application for admission to the School of Law be made before taking the test or registering with LSDAS.

Applications for admission to the school may be filed any time after September 1, but preference will be given to applicants who file their applications prior to January 1. There is a \$10.00 application fee. This application fee will be waived in all cases in which the applicant has received a waiver of the LSDAS fee. The method for obtaining that waiver may be found in the LSAT bulletin.

An applicant who is admitted is required to make a security deposit of \$100 at the time of his acceptance or prior to April 1. The deposit may be refunded thereafter, if the withdrawal is deemed to be for a good reason. This deposit is credited against the first semester's tuition and fees.

Admissions are made without regard to race, color, religion, sex, national origin, or disability.

### **Degree Requirements**

A candidate for the Juris Doctor (J.D.) degree must satisfy the entrance requirements, fulfill the residence requirements, and satisfactorily complete a total of 90 semester hours of work for credit and must take all required courses. The required courses consist of all first year courses, Constitutional Law II, The Legal Profession, and a senior writing seminar.



**RESIDENCE REQUIREMENT**

A candidate must complete six semesters of residence, not less than the last two of which must be in this School of Law. In order to obtain residence credit for a semester, a candidate must examine in a minimum of 12 hours of work and must obtain final credit in a minimum of 10 hours of work. A candidate who either examines in or obtains final credit for fewer than the required minimum hours will be given proportionate residence credit. No credit toward residence is given in courses in which a student receives a failing grade.

**LIMITATION OF COURSE HOURS**

No student may register for more than 16 hours without the consent of the dean. It is advisable for students to devote substantially their entire time to their work in the school. A student who undertakes substantial employment outside the school should reduce his course load.

**ATTENDANCE AND WITHDRAWAL**

Regular attendance is expected and required of each student. An instructor may exclude from any class a student who is unprepared and may, after prior notice, exclude from the final examination in any course any student whom, for reasons of lack of preparation or lack of attendance, he deems unqualified to receive credit in the course. Specific rules regulating attendance and withdrawal from courses are furnished each student prior to registration.

**EXAMINATIONS**

A student who has not withdrawn, or been withdrawn, from a course is expected to take the examination for that course at the regularly scheduled time. Unexcused failure to take an examination will result in a failing grade. If failure to take an examination is excused, the student may, with the permission of the dean and the instructor, take the examination after the rest of the class or at the time it is next regularly offered.

**POOR SCHOLARSHIP RULE**

Grades are given in numbers, with 75 being the average required for graduation. A student who fails to have a cumulative average of 74 at the end of the first year or 75 at the end of any other academic year will be dropped from the school for poor scholarship. A student whose average at the end of the first year is below 74 may appeal to the dean, who appoints an ad hoc committee to recommend acceptance or denial of the petition for readmission.

**Tuition and Fees**

Tuition and fees in the School of Law are established by the Board of Trustees and are subject to change whenever conditions make changes necessary. Present tuition and fees for regularly enrolled law students (taking twelve or more semester hours) are \$369.00 per semester for residents and \$893.00 per semester for non-residents. Books will cost about \$100 per semester.

**Financial Aid**

Although the School of Law has limited resources for financial aid at its disposal, some assistance is available.

The University maintains an Office of Student Work and Financial Assistance through which work on campus, cooperative work-study programs, the federal work-study program, various veterans benefits (both state and federal), tuition remission scholarships, and student loans may be negotiated. For more specific information, students may contact the Office of Student Work and Financial Assistance, Woody Hall, Southern Illinois University at Carbondale, Carbondale, Illinois 62901.

In addition, there are available through the law school:

1. A number of Dean's Club scholarships, made available through contributions by the school's benefactors.
2. The Judge James O. Monroe, Jr. scholarship, made available through the Judge James O. Monroe, Jr. endowment fund established by the Madison County Bar Association.
3. One scholarship available to a student from a minority group admitted to the entering class. This scholarship is sponsored by the Phi Alpha Delta Law Fraternity, International.
4. A cash grant of \$50 to a needy law student, made available by the Phi Alpha Delta Law Fraternity, International.
5. A limited loan fund established by the Illinois Bar Foundation, available only to second- and third-year students.
6. A limited number of research assistantships awarded to members of the second- and third-year classes primarily on a merit basis. These are provided from the school's state-appropriated funds. Assistantships are also awarded to each of the six members of the Moot Court Board.
7. A limited number of work opportunities in the law library and in the administrative offices of the school. These are provided from the school's state-appropriated funds.
8. A limited number of cash grants awarded from the school's activities funds derived from various sources, including application fees.

Specific instructions for applying for financial aid are mailed during the summer to entering students who indicate in their admission applications that they are interested in financial aid.

### **Housing**

University on-campus housing is available for 5,600 single students and 576 married students. Off-campus housing is readily available. Inquiries concerning on-campus or off-campus housing may be obtained from University Housing, Washington Square, Southern Illinois University, Carbondale, Illinois 62901.

### **Honor Code**

"The cornerstone of our legal system is the integrity of the individual lawyer." Preparation for law, therefore, must encourage individual integrity as well as understanding of law. The essence of an honor system is the observance by each student of high ethical standards of conduct. The system yields immediate tangible advantages of convenience—examinations are not supervised, a student's word is accepted as the truth, and ownership of personal belongings is respected; it yields also lasting intangible values of the spirit—those who have lived under an honor code are forever dissatisfied with any less rigorous standards. Students of the school have adopted an honor code and elected an ethics council to enforce it. Copies of the code, as amended, will be sent to applicants on request and will be sent routinely to all accepted applicants.

### **Student Bar Association**

The student body has drafted and adopted a constitution and by-laws for the Student Bar Association of which every regular law school student is a member. The association functions primarily through officers and committees elected by the membership at large and plays an integral role in the operation and governance of the law school. The students who serve as representatives to the faculty meetings are elected by the students, and those who serve on the various faculty committees are appointed by the dean from a list submitted by the president of the Student Bar Association.

### **Legal Aid Clinic**

The school operates a legal aid clinic which works directly with inmates of various state institutions such as the Illinois state prison at Menard, Illinois. The clinic has a full-time director who is also a member of the faculty and provides interested students with a number of internships and research assistantships. The work with these inmates, with the Land of Lincoln program for indigent persons, and with the public defender and appellate public defender programs, as well as with other selected programs, gives students an unusual opportunity for variety in the clinic experience. Civil as well as criminal problems are encountered. Classroom experience emphasizes preparation of and presentation of cases for trial, lawyer-client counseling, and negotiating skills.

### **Law Journal**

The *Southern Illinois University Law Journal* is a scholarly legal publication which is printed twice yearly. The journal is managed and edited by an editorial board, with the published materials supplied by students, law professors, and other members of the legal profession. Work on the journal affords the student intensive training in legal research, analysis, and writing. All students are eligible to write for the journal and earn writing and academic credit for demonstrating superior writing skills. A small percentage of the journal candidates will be invited to be members of the editorial staff of the journal on the basis of grades at the end of the second and third semester. Membership on the editorial board is attained by completion of the writing and administrative requirements. There is an election for the offices of editor-in-chief, managing editor, articles editors, notes and comments editors, research editors, and business editor.

### **Moot Court**

The moot court program, under the directorship of a full-time law faculty member, is a comprehensive one. It provides a required experience in appellate practice in the first year, an opportunity to pursue an advanced program in the second year, and eventual membership on the student moot court board which is selected from those interested and qualified. The school has participated in national moot court competition since 1974 and plans to continue doing so in the future. This team is selected from students enrolled in the advanced moot court course.

### **Concurrent J.D. and M.B.A. Programs**

A student who has been admitted separately to the School of Law and to the graduate program in business administration may apply for permission to study concurrently for both the Juris Doctor and the Master of Business

Administration degrees. This permission must be requested from both the School of Law and the graduate program in business administration, ordinarily prior to entry into the second-year curriculum of the School of Law.

During the first academic year of concurrent work on the two degrees, the student enrolls only in the first-year law curriculum. In any subsequent academic term the student may enroll either for courses only in the School of Law or only in the Graduate School, or for courses in both units. A student registered for both law and graduate courses in the same term must enroll for a minimum of ten semester hours in law, and twelve semester hours in total, in order to meet A.B.A. residence requirements and the academic requirements of the School of Law.

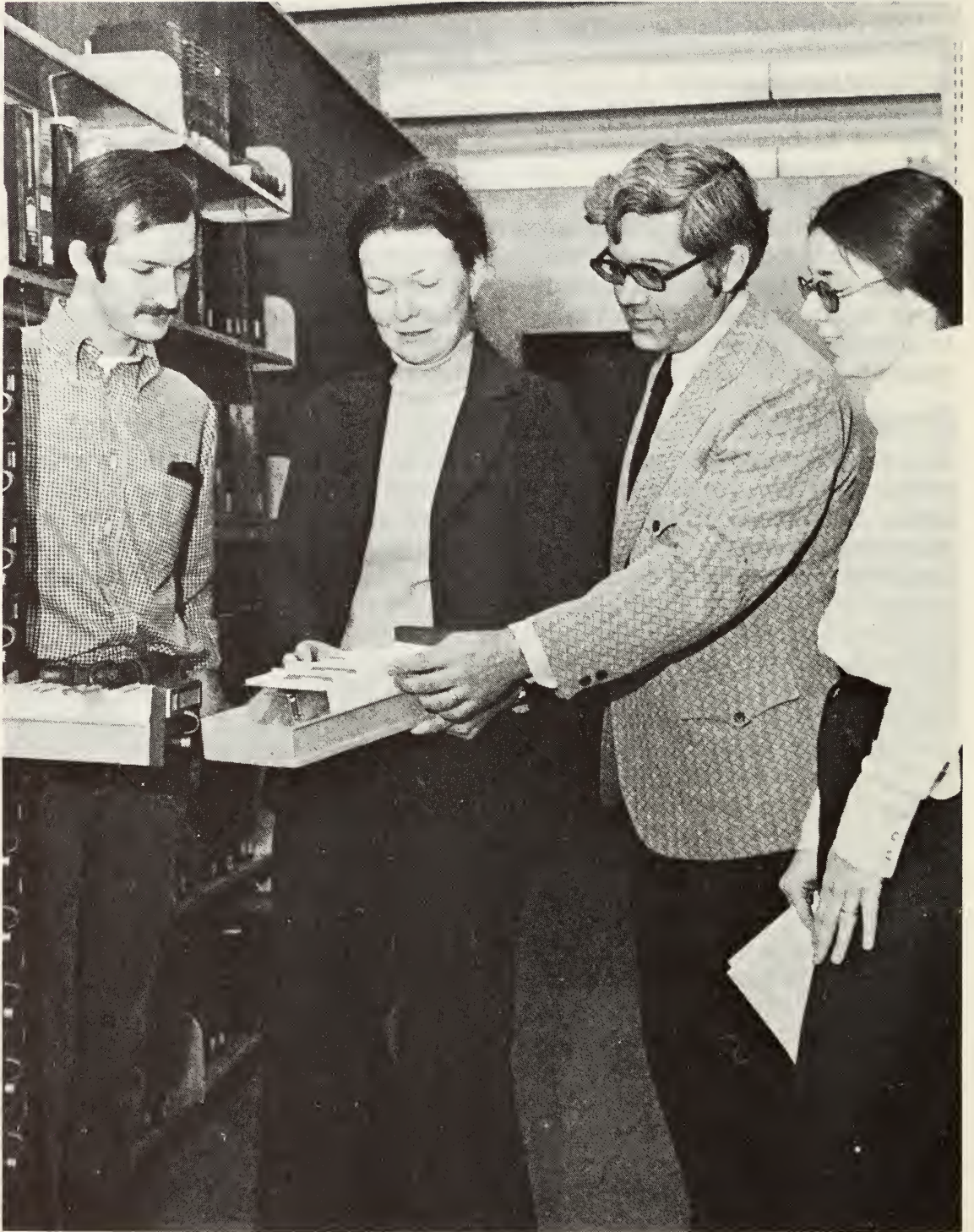
Completion of the concurrent programs requires that the student successfully complete 81 semester hours of law courses and 30 semester hours of courses that meet M.B.A. requirements. In addition, the student must fulfill all other requirements of the School of Law, the Graduate School, and the program in business and administration for the J.D. and M.B.A. degrees.

### **Placement Services**

A full range of placement services is offered to students and alumni including current job listings, on-campus interviews with prospective employers, and resume assistance. Students are encouraged to begin career planning early in their law school years and to seek summer and part-time legal employment experience. The placement office will make every effort to help students identify and pursue employment opportunities.

### **Research Bureau**

The purposes of the research bureau are to furnish high quality service to attorneys while providing paid research and writing experience to law students. Second and third year students are eligible for participation in the organization which is administered by a student steering committee with the advice and assistance of a faculty adviser and the placement director.



# 2

## Faculty and Staff

### Faculty

**HARLAN S. ABRAHAMS, B.S., J.D., LL.M.**

*Assistant Professor of Law*

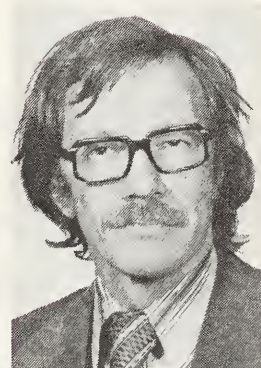
B.S. 1972, J.D. 1974, University of Nebraska; LL.M. 1975, Harvard. Admitted to practice in California. Summer associate 1973 and 1974, Rifking & Sterling, Inc., Beverly Hills; instructor in law 1974-75, first-year seminar program, Boston University; assistant professor at SIU School of Law since 1975. Author of articles in legal periodicals. On leave 1977-78 at University of Puget Sound School of Law.



**ROBERT E. BECK, B.S.L., LL.B., LL.M.**

*Professor of Law*

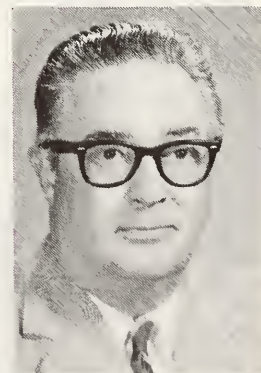
B.S.L. 1958, University of Minnesota; LL.B. 1960, University of Minnesota; LL.M. 1966, New York University. Admitted to practice in Minnesota. Private practice 1960-62; assistant professor, University of North Dakota, 1962-65; visiting associate professor, University of Maine, 1965-66; associate professor, 1966-68, professor, 1968-75, Chester Fritz Distinguished Professor, 1975-76, University of North Dakota; professor at SIU School of Law since 1976. Author of *Drainage Law, Waters and Water Rights* (R. Clark ed. 1967, 1972, 1976), and articles in legal publications.



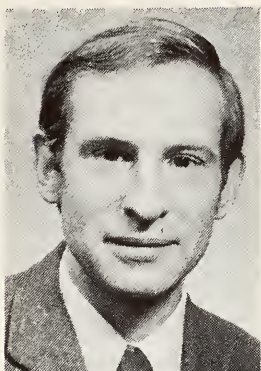
**ROBERT H. DREHER, B.A., J.D., D.L.**

*Associate Professor of Clinical Law*

B.A. 1936, University of Texas; J.D. 1940, University of Illinois; D.L. 1973, Oxford. Admitted to practice in Illinois and California. Special agent, F.B.I., 1940-46; private practice, 1946-67; associate professor, Center for the Study of Crime, Delinquency, and Corrections, and Department of Government, Southern Illinois University since 1967; associate professor of clinical law and director, clinical program, at SIU School of Law since 1974.







**DARRELL W. DUNHAM, B.A., J.D., LL.M.**

*Associate Professor of Law*

B.A. 1968, J.D. 1971, Willamette University; LL.M. 1972, Harvard. Admitted to practice in Washington. Law clerk Justice Sloan, Oregon Supreme Court, 1970; associate professor of law, University of Idaho, 1972-1975; visiting professor of law, University of South Dakota, 1975-1976; visiting professor of law, University of San Diego, Summer 1976; associate professor at SIU School of Law since 1976. Author of articles in legal periodicals.



**DONALD W. GARNER, B.A., J.D.**

*Assistant Professor of Law*

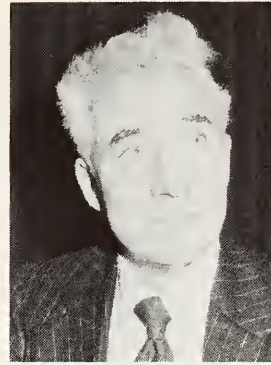
B.A. 1967, University of Texas at Arlington; J.D. 1971, University of Texas at Austin. Admitted to practice in Texas. Briefing attorney, Texas Supreme Court, 1971-72; private practice, 1972-74; assistant professor at SIU School of Law since January, 1974.



HAROLD W. HANNAH, B.S., J.D.

*Adjunct Professor of Law*

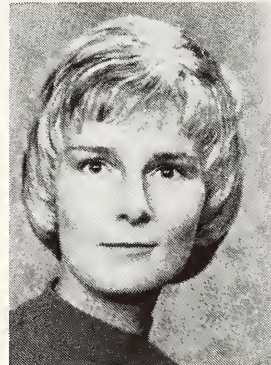
B.S. 1932, J.D. 1935, University of Illinois. Director, Division of Special Services for War Veterans, 1945-47; associate professor, agricultural law and administration, University of Illinois, 1935-41 and 1947-54; dean of resident instruction, College of Agriculture, 1954-59; group leader of contract team in India, 1955-57; professor of agricultural and veterinary medicine law, University of Illinois, 1959-71; private practice since 1971; lecturer and adjunct professor at SIU School of Law since 1975. U.S. Army, 1941-45. Author of *Law on the Farm* (MacMillan, 1948); *Law and Court Decisions on Agriculture* (with Krausz, Stipes Publishing Co., 1968); *Law for the Veterinarian and Livestock Owner* (Interstate, 1974); *Resource Book for Universities in Developing Countries* (University of Illinois Press, 1966); *The Legal Base for Universities in Developing Countries* (with Caughey, University of Illinois Press, 1967); *Law and the Farmer* (revision of Buescher, Springer Publishing Company 1975).



NANCY E. HOLLER, B.A., J.D.

*Assistant Professor of Law*

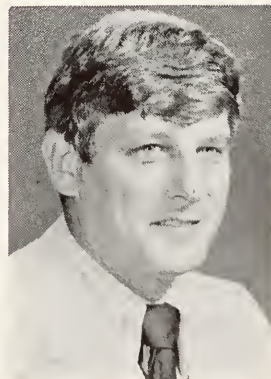
B.A. 1966, Wellesley College; J.D. 1969, University of Michigan. Admitted to practice in Illinois. In practice, Baker & McKenzie, Chicago, 1970-71; assistant professor 1972, University of Illinois; Governor's Commission for Revision of Mental Health Code, Illinois, 1974; assistant professor, at SIU School of Law since 1975.

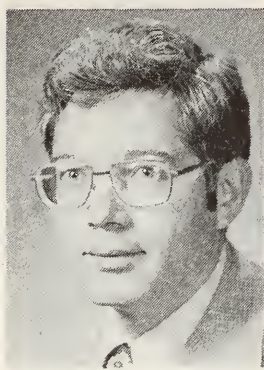


JOHN W. HUFFMAN, B.S., LL.B.

*Adjunct Professor of Law*

B.S. 1959, Eastern Illinois University; LL.B. 1964, University of Illinois. Private practice in Illinois, 1964-70; dean for judicial council, Kent State University, 1970-72; legal counsel, Southern Illinois University since 1972; adjunct professor of law at SIU School of Law since 1975.





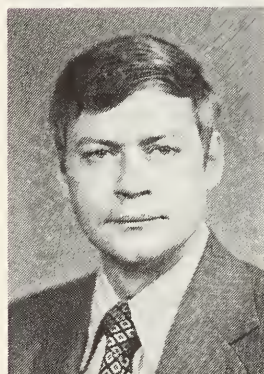
ROGER F. JACOBS, A.B., A.M.L.S., J.D.

*Professor of Law and Librarian*

A.B. 1962, J.D. 1970, University of Detroit; A.M.L.S. 1964, University of Michigan. Admitted to practice in Michigan. U.S.N. 1954-58. Librarian 1962-67, University of Detroit; librarian and assistant professor 1967-69, librarian and associate professor 1969-72, librarian and professor 1972-73, University of Windsor; librarian and professor at SIU School of Law since 1973. President, Canadian Association of Law Libraries, 1971-73; president, Mid-America Association of Law Libraries, 1974-76; member, editorial advisory board, Trans-Media Legal Publications since 1973; member, executive board, American Association of Law Libraries since 1976.

DAVID C. JOHNSON, B.S., C.P.A., J.D., LL.M.

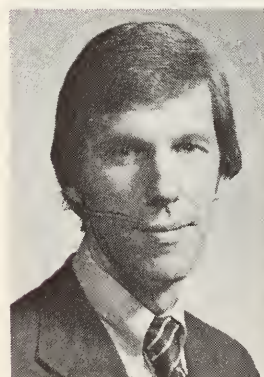
*Professor of Law and Associate Dean*



B.S. 1959, C.P.A. 1959, J.D., 1961, University of North Dakota; LL.M. 1964, University of Pennsylvania. Admitted to practice in North Dakota and Georgia. Graduate fellow 1964, University of Pennsylvania; assistant professor 1964-67, associate professor 1967-70, professor 1970-71, Emory University; visiting professor 1971-72, professor 1972-75, University of Oklahoma; professor at SIU School of Law since 1975. U.S. Army Captain, 1961-63.

EDWARD J. KIONKA, B.S., J.D., LL.M.

*Professor of Law*



B.S. 1960, J.D. 1962, University of Illinois; LL.M. 1974, Columbia University. Admitted to practice in Illinois and Missouri. Private practice 1962-64, 1971-72, 1975-76. Lt. Cdr., USNR. Teaching associate, Columbia University, Fall 1962; instructor in law, University of Michigan, 1964-65; director, Illinois Institute for Continuing Legal Education, 1965-67; assistant dean and assistant professor of law, University of Illinois, 1967-71; special counsel, General Government Committee, Sixth Illinois Constitutional Convention, 1970; Krulewitch Fellow, Columbia University, 1972-73; associate professor, 1973-75, 1976-77, adjunct professor, 1975-76, professor at SIU School of Law since 1977. Author of *Torts in a Nutshell: Injuries to Persons and Property*, articles in legal periodicals. Editor of *Illinois Civil Practice After Trial* (Illinois Institute for Continuing Legal Education, 1970, 1976).

MARK R. LEE

*Assistant Professor of Law*

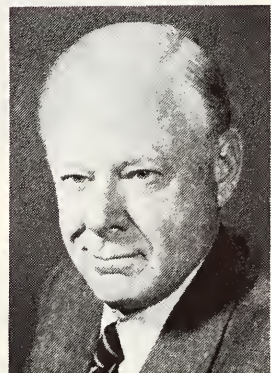
B.A. 1971, Yale University; J.D. 1974, University of Texas, Austin. Admitted to practice in Texas. Assistant attorney general, Austin, Texas, 1974-75; attorney, Department of Justice, Washington, D.C., 1975-76; instructor, University of Miami, 1976-77; assistant professor at SIU School of Law since 1977.



HIRAM H. LESAR, A.B., J.D., J.S.D.

*Professor of Law and Dean*

A.B. 1934, J.D. 1936, University of Illinois; J.S.D. 1938, Yale. Admitted to practice in Illinois, Missouri, U.S. Supreme Court. Sterling Fellow, Yale, 1936-37; assistant professor 1937-40, associate professor 1940-42, University of Kansas; senior attorney 1942, principal attorney 1943, Board of Legal Examiners, Washington, D.C.; U.S. Navy 1944-46 (Lt. Cdr.); associate professor 1946-48, professor 1948-57, University of Missouri; professor 1957-60, dean and Zumbalen professor 1960-72, Washington University; dean and professor of law at SIU School of Law since 1972; interim president 1974. Summer visiting professor: Illinois, 1947; Indiana, 1952; Southern California, 1959; North Carolina, 1961; New York University, 1965. Reporter, Special Study Committee on the Judiciary (Mo.), 1966-67. Author: *Landlord and Tenant* (Little-Brown, 1957); Vol. I Pt. 3 of *American Law of Property* (Casner ed.) (Little-Brown, 1952, Supp. 1977); articles in *Annual Survey of American Law*, 1953, 1955-70, in various legal periodicals, and in the *Encyclopaedia Britannica*.

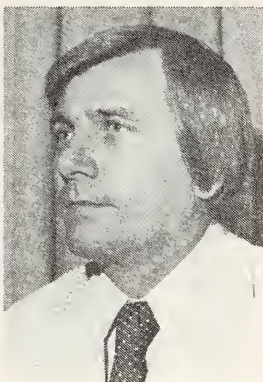


T. RICHARD MAGER, B.A., J.D.

*Associate Professor of Law*

B.A. 1956, J.D. 1960, University of Missouri. Admitted to practice in Illinois and Missouri. Lecturer in law, 1963-66, University of Missouri; private practice, 1963-64; assistant prosecuting attorney, 1964, Boone County, Missouri; assistant counsel 1964-67 and counsel 1971, The Curators, University of Missouri; legal counsel 1971-72, Vice President for Development and Services 1972-75, Southern Illinois University; associate professor at SIU School of Law since 1975.





**BRIAN E. MATTIS, B.S.B.A., J.D., LL.M.**

*Professor of Law*

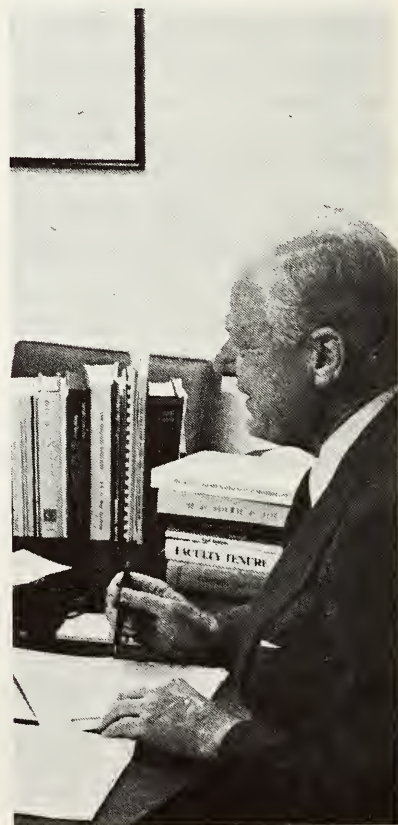
B.S.B.A. 1960, University of Florida; J.D. 1968, University of Miami; LL.M. 1969, Yale. Admitted to practice in Florida. Sterling Fellow, Yale, 1968-69; associate professor 1969-72, professor 1972-74, University of Nebraska; professor at SIU School of Law since 1974. Summer: University of Nebraska, 1970, 1972, 1973. Author of articles in legal publications.



**TAYLOR MATTIS, B.A., J.D., LL.M.**

*Associate Professor of Law*

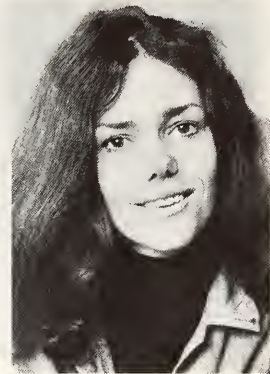
B.A. 1960, University of Alabama; J.D. 1963, University of Miami; LL.M. 1969, Yale. Admitted to practice in Florida and Nebraska. Private practice, 1963-66; law clerk, U.S. District Judge Emmett Choate, 1966-68; Sterling Fellow, Yale, 1968-69; attorney, Nebraska Appellate Justice Project, 1972-74; associate professor at SIU School of Law since 1974. Author of articles in legal periodicals.



VALERIE G. MCAULIFFE

*Visiting Professor of Law, Fall, 1977*

LL.B.(Hons.) 1965, University of Western Australia; B.A. 1971, University of Western Australia. Tutor, temporary lecturer, lecturer, University of Western Australia, 1966- ; lecturer, Wadham College, Oxford University, U.K., 1974-1975, 1976-1977.



FRANK W. MILLER, B.A., LL.B., S.J.D.

*Visiting Professor of Law, Summer, 1977*

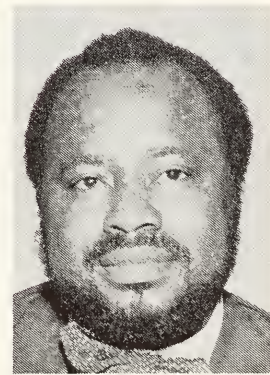
B.A. 1946, LL.B. 1948, S.J.D. 1954, University of Wisconsin. Admitted to practice in Wisconsin. AUS 1942-45. Graduate fellow 1948, University of Wisconsin; assistant professor 1948-53, associate professor 1953-56, professor 1956-62, Coles professor of criminal law and administration 1962-65, James Carr professor of criminal jurisprudence since 1965, Washington University. Author of *The Test of Factual Causation in Negligence and Strict Liability Cases* (with Becht, Washington University Press, 1961); *Prosecution: The Decision to Charge a Suspect with a Crime* (Little, Brown, 1969); *Criminal Justice Administration and Related Processes* (with Dawson, Dix and Parnas, Foundation Press, 1971, successor edition, 1976); *The Juvenile Justice Process* (Foundation Press, 1976); *The Mental Health Process* (Foundation Press, 1976); *Sentencing and the Correctional Process* (Foundation Press, 1976); articles in legal periodicals and in the *Encyclopedia Americana*.



ANDREW N. ONEJEME, LL.B., LL.M., J.S.D.

*Associate Professor of Law*

LL.B. 1960, London; LL.M. 1961, J.S.D. 1963, Yale. Admitted to practice in Nigeria. Graduate fellow, Yale, 1960-63; lecturer, Lagos University, Nigeria, 1965-70; research fellow, S.O.A.S., London, 1966-67; associate professor, University of Connecticut, 1971-72; Hofstra University, 1972-74; associate professor at SIU School of Law since 1974. Summer: University of Connecticut, 1972.



THOMAS P. POLITYKA, B.A., J.D.

*Assistant Professor of Law*

B.A. 1971, J.D. 1973, University of Nebraska. Admitted to practice in Nebraska. Law clerk, U.S. District Judge Robert Van Pelt, 1973-74; assistant professor at SIU School of Law since 1974.





THOMAS G. ROADY, JR., A.B., M.A., J.D.

*Professor of Law*

A.B. 1940, M.A. 1949, J.D. 1948, University of Illinois. Admitted to practice in Illinois and Tennessee. AUS-AC, 1942-46, Maj.; Lt. Col., U.S.A.F. Res. University Fellow, Columbia University, 1948-49; assistant professor 1949-50, associate professor 1950-51, professor 1951-52, University of Tennessee; associate professor and assistant dean, Washington University, 1951-52; private practice in Illinois 1952-56; visiting professor, University of Missouri, 1954; professor, Vanderbilt University, 1956-68; professor, University of Tennessee, 1968-73; associate dean 1973-77, professor at SIU School of Law since 1973. Editor of *Professional Negligence* (with Andersen, 1960); *Essays on Procedures and Evidence* (with Covington, 1961); *Selected Problems in the Law of Corporate Practice* (with Andersen, 1960). Author of articles in legal periodicals.

R. DALE SWIHART

*Visiting Professor of Law, Summer, 1977*

A.B. 1953, DePauw University; J.D. 1957, Indiana University. Admitted to practice in Indiana. Teaching associate, Indiana University, 1957-58; assistant and associate professor, University of New Mexico, 1958-64; associate professor, University of Texas, 1964-65; associate professor and professor, Washington University, since 1965. Author of articles in legal periodicals.



EDWARD L. WELCH, B.S., J.D.

*Adjunct Professor of Law*

B.S. 1957, St. Louis University; J.D. 1960, Washington University. In private practice, East St. Louis and Edwardsville. Labor attorney with Allis-Chalmers and National Labor Relations Board, 1960-67; lecturer and adjunct professor of law at SIU School of Law since 1973.

**Law Library Staff**

ROGER JACOBS, A.B., A.M.L.S., J.D., *Professor and Librarian*

ELIZABETH S. KELLY, B.A., *Instructor and Assistant Librarian for Reader Services*

ELIZABETH W. MATTHEWS, B.A., M.S., Ph.D., *Assistant Professor and Assistant Librarian for Cataloging*

**Administrative Staff**

NORMA M. BROWN, B.A., *Registrar*

RITA L. MOSS, *Placement Director*











