

10-1-1961

Southern Alumnus

Southern Illinois University Alumni Office

Follow this and additional works at: https://opensiuc.lib.siu.edu/alumni_mag

Recommended Citation

, . "Southern Alumnus." (Oct 1961).

This Article is brought to you for free and open access by the SIU Alumni Association at OpenSIUC. It has been accepted for inclusion in SIU Alumni Magazine by an authorized administrator of OpenSIUC. For more information, please contact opensiuc@lib.siu.edu.

Record Figure for 1961-62

SIU Operating on \$24,614,615 Budget

Southern Illinois University submitted a request for an operating budget of \$52,845,120 for the 1961-63 biennium to the 72nd Illinois State Legislature meeting during the first six months of this year. Governor Otto Kerner proposed a budget of \$43,647,690 for Southern and the legislature approved a final appropriation bill for \$42,210,690 for the University.

Of the \$42,210,690 the University is operating on an internal budget of \$20,947,025 for the year 1961-62, which started July 1. This amount does not include the budget for Auxiliary Enterprises and restricted accounts, which is \$3,667,590.

Largest item is \$11,439,919 for instruction, while \$3,213,394 is allocated for general administration and general expense. Other items include \$2,753,535 for operation of the physical plant; \$1,107,455 for the libraries; \$490,762 for research; and \$49,095 for extension work.

Total for the Carbondale Campuses is \$16,991,812.

Total for the Southwestern Campus is \$3,955,213. A total of \$1,987,358 budgeted for instruction is the largest allocation for the Southwestern Campus, while the general administration and general expense fund totals \$730,275. For the Southwestern physical plant \$579,895 is earmarked for operations.

The budget, approved by the Board of Trustees at its August meeting, was determined partly on the basis of enrollment. It has been estimated that the fall term total resident population on both

campuses will be 14,750 students, almost 1,500 above last year's figure. Another 5,200 enrollees in extension, adult education, and University School were expected.

Current funds from outside agencies for research projects total \$672,409 for the 1961-62 year, while restricted outside gifts for instructional purposes—ranging from traineeship stipends in nursing and rehabilitation to the Vandever Chair of Economics—total \$905,023 for the year.

At an earlier board meeting, the trustees had decided first priority in the budget would go to faculty and staff salary increases. Cutbacks in current and projected expenditures were made in order to allocate \$632,000 for salary increases and upgrading of faculty and staff positions. This was done "because the quality and integrity of the staff must be maintained to preserve the soundness of the University program."

Total for personal services, salaries and wages, is \$15,822,715. Personal service money totaling \$1,122,440 is slated for student employment, a jump of some \$100,000 over last year. The board indicated more rather than less student help would be used this year. Pay scales for students are holding at \$.80 to \$1.25 per hour.

The board also stated that operational funds are moderately ahead of those allocated during 1960-61, but that they "do not provide adequately for the growth caused by the increasing number of students or for expenditures necessary as functions of departments

Alumna Wills \$500 for Student Loan Fund

Mrs. Frank R. Morris (Ada Heaton Blake '24-2), Aurora, has willed the SIU Foundation a loan fund of \$500 to be established at the time of her death. The loan will go to an ambitious and needy student, to be paid back into the revolving loan fund when the student has a job and is earning a salary.

Mrs. Morris is 75, a retired teacher who taught 32 years. She is a native of southern Illinois and attended SINU from 1908 until she received her diploma in 1924.

Her first teaching was in the primary grades in Marion. She taught there 15 years and after graduation from SINU taught home economics in Decatur 16 years, later going to Mooseheart at Aurora. Mr. Morris died in 1957.

Mrs. Morris has been a member of the Alumni Association for many years.

SIU Foundation Board Meeting

Charles S. Mayfield '39, Harvey, president of the SIU Foundation, announces a meeting of the foundation's board of trustees from 9:30 A.M. to noon on Friday, October 20, at the University Center. The board will review plans for 1961-62, announce committees, and discuss projects to be submitted to alumni clubs and alumni in general.

are increased."

The 1961-62 budget is nearly \$5.7 million higher than last year's budget of \$20,983,585. State funds used in 1960 amounted to \$15.4 million.

Homecoming on "Broadway Beat" October 19-21

All the glitter and color and hoopla of Broadway will come to the Carbondale Campus for the 1961 Homecoming October 19-21. Theme of this year's celebration is "Broadway Beat." Broadway characters will come to life; all of Broadway's gaiety and fun will be here to welcome alumni and guests during the action-packed weekend.

This year the Homecoming Dance will be held in the beautiful and colorful University Center Ballroom. Peter Palmer and his orchestra will furnish the music for the dance on Saturday, October 21. Tickets are \$4 a couple; dancing begins at 9.

The Homecoming Show, featuring Johnny Mathis, will be presented only on Friday night, October 20. Two shows will be given—at 7 P.M. and at 9 P.M. Tickets are \$4, \$3.50, \$3, and \$2 for reserved seats in Shryock Auditorium.

The Homecoming Football Game will be between Southern and Eastern Illinois University, starting at 1:30 P.M., in McAndrew Stadium. Alumni will sit in a special reserved section.

The Homecoming Concert will be given in Shryock Auditorium at 8 P.M. on Saturday, October 21. Admission is free. The Southern Illinois Symphony Orchestra will appear.

Homecoming festivities begin Thursday, October 19, with crowning of the Homecoming Queen in Shryock Auditorium.

The Homecoming play presented by the Southern Players is Tennessee Williams' Pulitzer Prize winning play, "Cat on a Hot Tin Roof," on Friday and Saturday nights.

The Alumni Office is serving as a box office to alumni who wish to attend any or all of the Homecoming events. Below is a reservation blank to fill out. Indicate how many tickets ordered in the box following the events. Make checks or money orders payable to **SIU Alumni Association**.

ALUMNI HOMECOMING RESERVATIONS

Name

Address

Enclosed is check or money order made payable to **SIU Alumni Association**, for \$..... for

STAGE SHOW, FRIDAY, OCTOBER 20

(indicate how many tickets in box after price you choose)

7 P.M. show, \$4.00 \$3.50 \$3.00 \$2.00

9 P.M. show, \$4.00 \$3.50 \$3.00 \$2.00

DANCE, SATURDAY, OCTOBER 21

\$4 per couple

FOOTBALL GAME, SATURDAY, OCTOBER 21

\$2.75 each for reserved seats in Alumni Section

PLAY, FRIDAY, SATURDAY, OCTOBER 20-21

Friday night, \$1 each Saturday night, \$1 each

Thursday, October 19

7:30 P.M. Coronation of Homecoming Queen, *Shryock Auditorium*

Friday, October 20

7:00 and 9:00 P.M. Homecoming Stage Show, featuring Johnny Mathis, *Shryock Auditorium*

8:00 P.M. Homecoming Play, "Cat on a Hot Tin Roof," *Southern Playhouse*

Saturday, October 21

7:30 to 8:30 A.M. Printing Service Former Employee Coffee Hour, *Printing Shop*

9:00 A.M. Homecoming Parade, University Avenue

8:00 to 10:00 A.M. Zoology Department Alumni Coffee Hour, *Life Science Building, Room 204*

9:00 to 11:00 A.M. English Department Alumni Coffee Hour, *812 South University*

10:00 A.M. School of Home Economics Alumni Coffee Hour, *Family Living Lounge*

10:00 A.M. Instructional Materials Club Alumni Tea, *Morris Library Lounge*

10:00 A.M. School of Business Alumni Coffee Hour, *School of Business Office, Mill Street*

11:00 A.M. Alpha Gamma Delta Buffet Luncheon, *Group Housing No. 104*

1:30 P.M. Homecoming Football Game, SIU vs. Eastern Illinois, *McAndrew Stadium*

4:00 to 6:00 P.M. Sigma Beta Gamma Alumni Coffee Hour, *Illinois Room, University Center*

4:00 to 6:00 P.M. Dame's Club Alumni Tea, *Morris Library Lounge*

4:00 to 5:00 P.M. Thompson Point Alumni Coffee Hour, *Lentz Hall*

5:00 to 7:00 P.M. Baptist Street Union Alumni Chili Supper, *Baptist Foundation*

After game Sigma Sigma Sigma Alumnae Tea, *Chapter House*

After game School of Fine Arts Alumni Tea, *Mr. and Mrs. John Russell Mitchell Art Gallery, Home Economics Building*

After game Women's Recreational Association Alumni Coffee Hour, *Recreational Room, Gym*

After game Geology Club Alumni Coffee Hour, *Agriculture Building, Room 184*

8:00 P.M. Homecoming Play, "Cat on a Hot Tin Roof," *Southern Playhouse*

8:00 P.M. Homecoming Concert, Southern Illinois Symphony Orchestra with guest artist, *Shryock Auditorium*

9:00 P.M. Homecoming Dance, Peter Palmer and Orchestra, *University Center Ballroom*

After a summer lull in activities, alumni clubs throughout Illinois and elsewhere are resuming programs with fall picnics, dinner meetings, and other events. Field representatives Jay King '51 and Warren Stookey '50 have "hit the road" as they assist in planning and presenting programs and projects.

On the fall calendar are the following meetings—

Missouri Chapter—A dinner to honor the four St. Louis area alumni who received Alumni Achievement Awards on Alumni Day in June will be held October 14. President is William Barnhart '56.

Washington County—Washington County alumni will meet for luncheon October 20 during the Washington County Teachers' Institute.

Richland County—Alumni of Richland County meet at Olney October 23.

Randolph County—A dinner meeting will be held by the Randolph County Alumni Chapter October 26.

Champaign Area—On November 29 the Champaign Area Alumni Chapter will have a buffet dinner at 6:30 P.M. at the Hickory Hill Hunt Club at White Heath, located on Rte 10, 20 miles west of Champaign, one mile east of where Rte 10 crosses the Sangamon River. Speaker will be George T. Wilkins '29-'37, Illinois superintendent of public instruction and immediate past president of the Alumni Association. Club president Lowell F. Belcher '39 is in charge of the meeting.

Macon County Officers

At their annual fall picnic September 9 at Fairview Park in Decatur, Macon County alumni elected the following officers for 1961-62—President Bobby G. Neville '51, M.S. '56; Vice President Lucille Gunn Browning '49; Secretary-Treasurer Laura Belle Johnson Winning '55; and board members John Reys '42, M.S. '48; Mary Craig Morris '47, M.S. '54; and Lorene Kerley Wills '47, M.S. '49 immediate past president.

Although slowed by a rash of early-season injuries, Southern's Saluki grid-ers now appear to be headed toward another fine record as they share the SIU fall sports spotlight with the cross country team.

Coach Carmen Piccone's rugged performers enjoyed a breather in their opener against Missouri School of Mines before encountering tough opposition in three consecutive Saturday night games—Drake (September 23), Central Michigan (September 30), and Northern Illinois (October 7) at McAndrew Stadium.

Pacing Southern's offensive attack this year is the veteran Amos Bullocks (Chicago), standout right halfback. In the line Captain Paul Brostrom (Chicago), operating at right guard, has been a dynamic field leader and one who demands all-out effort by every team member.

Other standout linemen have been Sam Silas (Bartow, Fla.), Jim Battle (Chicago), Ken Moore (Harvey), Dave Mullane (St. Louis), John Longmeyer (Greenfield), and Charles O'Neill, (Chicago). They opened the season at Rolla, Mo., with Quarterback Vern Pollock (DeSoto, Mo.), Fullback Jerry Frericks (Overland, Mo.), and Dennis Harley (Peoria) in the backfield along with Bullocks.

Ron Winter (Carmi), SIU's signal caller for the past two seasons, has been slowed by an early-season shoulder injury but is rapidly returning to form.

Following the Northern Illinois game here, the Salukis travel to Western Illinois (Macomb) October 14 before returning for the Homecoming classic October 21, when Eastern Illinois invades. Two road games, at Illinois State (October 28) and Eastern Michigan (November 4) follow prior to the final two games of the season at home against Wisconsin State (November 11) and Bowling Green (November 18).

Meanwhile Coach Lew Hartzog's har-

riers are preparing to defend a somewhat prominent reputation established in 1960 when they went through the entire campaign undefeated. Included in the string of 10 straight successes were the National Association of Intercollegiate Athletics, Interstate Intercollegiate Athletic Association, Illinois Intercollegiate Cross Country Association, and National Junior AAU meets.

Unwilling to rest on past laurels, however, Hartzog has lined up an attractive card for the '61 Salukis. Included is a stellar dual contest with Kansas University October 6.

The remainder of the schedule calls for the Salukis to meet Western Illinois at Macomb October 14, entertain Illinois State Normal October 21, travel to Rolla, Mo., for a dual meet October 26, host their own Invitational Open October 28, and stage a two-man 10-mile Relay Open here November 4. The following weekend will be highlighted by the conference meet with the NCAA (college division) meet set for Wheaton College November 18.

Heading Southern's squad will be Joe Thomas (Uniontown, Pa.) and John Flamer (Yonkers, N.Y.), kingpins of last year's fine club. Others who are being relied upon to come through this year are Alan Gelso (West Frankfort), Don Trowbridge (Alton), Mike Brazier (Moro), and Lee King (Pleasant Plains).

SIU alumni may also be interested in following Southern's participation in the National AAU meet to be staged at Louisville, Ky., Thanksgiving Day, November 23. Competing for the Salukis in the national meet will be the three British distance runners, Bill Cornell, Mike Wiggs, and Brian Turner, along with Jim Dupree, who is well known internationally after having been the United States' number one 800-meter representative in the meets in Russia, Germany, Poland, and England last summer.

JOB OPPORTUNITIES

Women medical specialists (therapists and dieticians) are needed by the U.S. Air Force at a base in central Illinois.

University in eastern New Mexico has an opening for a piano instructor. Salary \$5,000 up.

Junior college in southern Illinois has a vacancy for a librarian. Salary open.

Educational television council in Tennessee needs executive director to establish educational television and solicit financial support.

Sports mart in southern Illinois needs a general manager. Salary open.

Prominent teachers' college in St. Louis area has listed vacancy for an English instructor. Ph.D. required.

Institute of aviation at a state university campus seeks an instructor in aviation electronics. Person should have aircraft maintenance experience and a B.S. in electronics.

Insurance company in St. Louis seeks a claims adjuster.

Large feed company in St. Louis area has opening for a research chemist, a person who is draft exempt. Salary \$425 per month.

Insurance company lists opportunities for young men to work on SIU campus as sales representatives. Salary \$500 per month.

Opening since September 1 for guidance person to work on junior high school level in central Illinois town.

Large industrial firm in Chicago lists a number of engineering, sales, accounting, and traffic positions. Beginning salaries from \$450 to \$525 and up.

For details write Placement Service, Southern Illinois University, Carbondale.

Published monthly except August by the Southern Illinois University Alumni Office. Member of the American Alumni Council.

Entered as second class matter December 1, 1939 at the Post Office at Carbondale, Illinois, under the Act of August 24, 1912.

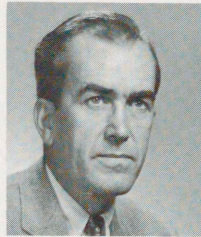
SOUTHERN SKETCHES

Alumni wishing to buy a copy of the 1962 Obelisk (which will be published next spring) can do so by ordering one before October 30. Price is \$6.50. Make checks payable to Obelisk and mail to Judy Barker, Obelisk Editor, Southern Illinois University, Carbondale. . . .

This month the University will call in bids for construction of a \$3.5 million Physical Education-Military Training Building. Completion of the dome-shaped structure is slated for the fall of 1963. It will provide activity and seating areas for 10 physical education class groups at any one time and four drill areas, four activity sections and two blocks of permanent seats for the AF ROTC program.

Cook Travels to Middle East

Last month Daniel Cook, associate professor of English, went to the University of Damascus in Syria, where he is teaching during 1961-62 under a Fulbright lectureship. A linguistics specialist, he is conducting courses in English as a second language. During World War II he was a Japanese language translator in the Navy. Professor Cook, member of the faculty since 1957, is a former associate editor of Webster's New International Dictionary and Webster's Elementary Dictionary. . . . Professor Wilbur Moulton, assistant professor of chemistry and member of the faculty since 1956, has a foreign lectureship from the



Cook

State Department to teach at the University of Baghdad in Iraq. . . .

John S. Rendleman, ex '47, legal counsel since 1951, has been appointed director of business affairs. He has been acting vice president for business affairs since Prof. George H. Hand left that office to become chairman of the new Department of Higher Education two years ago. . . . Robert Hines, director of choirs since 1957, has left Southern to take a similar post at the University of Wichita in Kansas. Under his direction the Choir and the Madrigal Singers achieved wide acclaim for many fine performances. New director is Robert Kingsbury, who comes from Wilson College at Chambersburg, Pa. Professor Kingsbury, native of Mississippi, has done much professional singing with the Robert Shaw Chorale and the Fred Waring Pennsylvanians.

Southern Players' 1961-62 Playbill

Five productions have been scheduled for this school year by the Southern Players—Tennessee Williams' Pulitzer Prize winner, "Cat on a Hot Tin Roof," October 20-22, 24-28; William Shakespeare's "Taming of the Shrew," December 1-3, 5-9; Garson Kanin's "Born Yesterday," February 2-4, 6-10; Garcia Lorca's "House of Bernarda Alba," April 13-15, 17-21; and the world premiere of the new John Brown play by Barrie Stavis, "Banners of Steel," May 18-20, 22-26. The Shakespeare farce will tour 30 Illinois communities in October and November and the Kanin comedy will tour the Northeast Defense Command in February.

First drowning in the Campus Lake took place August 9 when Michael, three-year-old son of Harold W. Moore, VTI instructor, became separated from his family and drowned near the sandy island at the beach area. . . . Thirteen men with a total of 226 years of experience, skills, and on-the-job industrial knowledge, are teaching 22 courses in the Industrial Management Program offered this fall at the Southwestern Illinois Campus. Men from St. Louis, Alton, Wood River, and Granite City industries are serving as instructors. . . .

A Saline County group, CDF Enterprises, is building a three-story dormitory for men at 716 South University Avenue. It will have 49 rooms, an office, apartment, and recreational hall and lounge.