

1961

1961-1962 Southern Illinois University Bulletin Edwardsville Campuses (Schedule of Classes for the Fall, Winter, and Spring Quarters)

Southern Illinois University Carbondale

Follow this and additional works at: http://opensiuc.lib.siu.edu/ua_bcc

Recommended Citation

, . "1961-1962 Southern Illinois University Bulletin Edwardsville Campuses (Schedule of Classes for the Fall, Winter, and Spring Quarters)." (Jan 1961).

This Article is brought to you for free and open access by the University Archives at OpenSIUC. It has been accepted for inclusion in SIU Bulletins and Course Catalogs by an authorized administrator of OpenSIUC. For more information, please contact opensiuc@lib.siu.edu.

Objectives of Southern Illinois University

TO EXALT BEAUTY

IN GOD,
IN NATURE,
AND IN ART;
TEACHING HOW TO LOVE THE BEST
BUT TO KEEP THE HUMAN TOUCH;

TO ADVANCE LEARNING

IN ALL LINES OF TRUTH
WHEREVER THEY MAY LEAD,
SHOWING HOW TO THINK
RATHER THAN WHAT TO THINK,
ASSISTING THE POWERS
OF THE MIND
IN THEIR SELF-DEVELOPMENT;

TO FORWARD IDEAS AND IDEALS

IN OUR DEMOCRACY,
INSPIRING RESPECT FOR OTHERS
AS FOR OURSELVES,
EVER PROMOTING FREEDOM
WITH RESPONSIBILITY;

TO BECOME A CENTER OF ORDER AND LIGHT

THAT KNOWLEDGE MAY LEAD
TO UNDERSTANDING
AND UNDERSTANDING
TO WISDOM.

1961-1962 Schedule of Classes

Edwardsville Campuses

Fall, Winter, and Spring Quarters



SOUTHERN ILLINOIS UNIVERSITY BULLETIN
Volume 3 Number 6 August, 1961
Second-class postage paid at Carbondale, Illinois.
Published monthly except in April and May by
Southern Illinois University.

The following issues of the *Southern Illinois University Bulletin* may be obtained without charge from General Publications, Southern Illinois University, Carbondale, Illinois.

General Information
Summer Session
Schedule of Classes (Carbondale)
Schedule of Classes (Edwardsville)
General Announcements (Edwardsville)
Graduate School
College of Education
College of Liberal Arts and Sciences
School of Agriculture
School of Applied Science
School of Business
School of Communications
School of Fine Arts
School of Home Economics
University Institutes
Division of Technical and Adult Education

All intending students should have the General Information Bulletin (issued once a year), plus the special bulletins of the various educational units in which they are most interested.

Board of Trustees

	TERM EXPIRES
JOHN PAGE WHAM, <i>Chairman</i> , Centralia	1965
KENNETH L. DAVIS, <i>Vice-Chairman</i> , Harrisburg	1963
MELVIN C. LOCKARD, <i>Secretary</i> , Mattoon	1965
MARTIN VAN BROWN, Carbondale	1967
HAROLD R. FISCHER, Granite City	1963
ARNOLD H. MAREMONT, Winnetka	1967
LINDELL W. STURGIS, Metropolis	1965
GEORGE T. WILKINS, (<i>Ex-officio</i>), Springfield	
LOUISE MOREHOUSE, <i>Recorder</i>	

Officers of Instruction

DELYTE W. MORRIS, *President*
CHARLES D. TENNEY, *Vice-President for Instruction*

EDWARDSVILLE CAMPUSES

CLARENCE W. STEPHENS, *Vice-President for Operations*
WILLIAM T. GOING, *Dean*
MILTON B. BYRD, *Associate Dean* (on leave)
JACK B. THOMAS, *Acting Associate Dean*

Business Division, JOHN J. GLYNN, *Head*
Education Division, CAMERON MEREDITH, *Head*
Fine Arts Division, ANDREW J. KOCHMAN, *Acting Head*
Humanities Division, NICHOLAS T. JOOST, *Head*
Science and Technology Division, KERMIT G. CLEMENS, *Head*
Social Sciences Division, HERBERT H. ROSENTHAL, *Head*

ROBERT F. ERICKSON, *Chief Academic Adviser, East St. Louis*
ERIC A. STURLEY, *Chief Academic Adviser, Alton*
JOHN H. SCHNABEL, *Registrar*

This Bulletin

contains the schedule of classes to be offered on the Edwardsville campuses for the fall, winter, and spring quarters of the 1961-62 school year. It also provides information relative to advisement and registration. It does not cover all questions concerning Southern Illinois University. For additional information about the Edwardsville campuses the prospective student should refer to the General Information bulletin and General Announcements (Edwardsville).

Table of Contents

University Calendar, 1961-1962	vi
Calendar of Events, 1961-1962	vii
Registration Calendar, Fall Quarter, 1961	ix
Registration Calendar, Winter Quarter, 1962	xi
Registration Calendar, Spring Quarter, 1962	xiii
Map of East St. Louis Campus	xvi
Map of Alton Campus	xviii
 GENERAL INFORMATION	 1
Admission Requirements	1
New Students	1
Re-entering Students	2
Current Students	2
Advisement and Registration	2
Testing Calendar	3
Payment of Fees	4
Fees for a Regular Quarter	4
Auditing of Courses	4
Changes and Withdrawals	5
Withdrawal from School	6
Cancellation of Registration	6
Personal Data Changes	6
Veterans' and War Orphans' Information	7
Sign-up Periods for Benefits	7
Responsibility of the Student	8
 CLASS SCHEDULE INFORMATION	 9
Course Number and Hours	9
Prerequisites	9
Academic Load	10
Courses "By Appointment" or "To Be Arranged"	10
Change or Cancellation of Classes	10
Free Bus Transportation	10
Bus Schedule	11
Listing by Academic Unit	12
 SCHEDULE OF CLASSES, FALL QUARTER, 1961	 13
SCHEDULE OF CLASSES, WINTER QUARTER, 1962	35
SCHEDULE OF CLASSES, SPRING QUARTER, 1962	57

University Calendar, 1961-1962

Edwardsville Campuses

SUMMER SESSION

Session Begins	Monday, June 19
Independence Day Holiday	Tuesday, July 4
Final Examinations	Wednesday–Thursday, August 9–10
Commencement	Friday, August 11

FALL QUARTER

New Student Week	Saturday–Sunday, September 16–17
Registration	Tuesday, September 19
Classes Begin	Thursday, September 21
Thanksgiving Recess	Wednesday, 12 noon–Monday, 8 A.M. November 22–27
Final Examinations	Monday–Saturday, December 11–16

WINTER QUARTER

Registration	Tuesday, January 2
Classes Begin	Thursday, January 4
Final Examinations	Wednesday–Monday, March 14–19

SPRING QUARTER

Registration	Monday, March 26
Classes Begin	Wednesday, March 28
Memorial Day Holiday	Wednesday, May 30
Final Examinations	Wednesday–Tuesday, June 6–12
Commencement	Thursday, June 14

Calendar of Events, 1961-62

SEPTEMBER

- 16 Saturday. New Student Orientation.
9:00 A.M.—5:00 P.M. Edwardsville campus.
6:00 P.M.—10:00 P.M. Social activity, Rock Spring Park, Alton.
Bus schedule for first day of orientation:
8:00 A.M. Buses leave Alton and East St. Louis for Edwardsville.
5:00 P.M. Buses leave Edwardsville for Rock Spring Park, Alton.
10:00 P.M. Buses leave Rock Spring Park for Alton and East St. Louis campuses.
- 17 Sunday. Orientation continues at respective campuses in Alton and East St. Louis. 1:30 P.M.—7:00 P.M.
- 19 Monday. Fall quarter begins.

OCTOBER

- 30 Monday. Homecoming activities begin.

NOVEMBER

- 4 Saturday. Homecoming activities end.
- 10 Friday. Guidance Test Battery 9:00 A.M., Alton Auditorium.
- 17 Friday. Guidance Test Battery 9:00 A.M., East St. Louis, Rm. 113.

DECEMBER

- 11 Monday. Fall quarter final examinations begin.
- 16 Saturday. Fall quarter final examinations end.

JANUARY

- 2 Tuesday. Winter quarter begins.

FEBRUARY

- 24 Saturday. American College Test 9:00 A.M., Alton Gymnasium.
- 24 Saturday. American College Test 9:00 A.M., East St. Louis Auditorium.

MARCH

- 2 Friday. Guidance Test Battery 9:00 A.M., Alton Auditorium.
- 9 Friday. Guidance Test Battery 9:00 A.M., East St. Louis, Rm. 113.
- 14 Wednesday. Winter quarter final examinations begin.
- 19 Monday. Winter quarter final examinations end.
- 26 Monday. Spring quarter begins.

APRIL

- 21 Saturday. American College Test 9:00 A.M., Alton Gymnasium.
- 21 Saturday. American College Test 9:00 A.M., East St. Louis Auditorium.

MAY

19 Saturday. Guidance Test Battery 9:00 A.M., Alton Gymnasium.

26 Saturday. Guidance Test Battery 9:00 A.M., East St. Louis, Rm. 113.

JUNE

6 Wednesday. Spring quarter final examinations begin.

12 Tuesday. Spring quarter final examinations end.

14 Thursday. Commencement.

Registration Calendar

Fall Quarter, 1961

- September 13 Freshmen and new student testing.
 See Testing Calendar, page 3.
- September 16 New Student Orientation begins.
- September 17 New Student Orientation ends.
- September 19 Fall quarter begins.

General registration for classes at Alton and East St. Louis.

Students must register for classes at the location at which they plan to attend in accordance with the alphabetical registration calendar. Students registering at Alton will report to the Auditorium Building to pick up authorization-to-register permits. Students registering at East St. Louis will report to the west (9th Street) door of the main building for the authorization-to-register permits.

CLASS	HOURS COMPLETED
Freshman	47 or fewer
Sophomore	48 to 95
Junior	96 to 143
Senior	144 or more
Graduate	Degree completed
Unclassified	Nondegree seeking

SENIORS	JUNIORS	SOPHOMORES
8:00- 8:20 L-M	10:20-10:40 L-M	12:40-1:00 L-M
8:20- 8:40 N-R	10:40-11:00 N-R	1:00-1:20 N-R
8:40- 9:00 S-T	11:00-11:20 S-T	1:20-1:40 S-T
9:00- 9:20 U-Z	11:20-11:40 U-Z	1:40-2:00 U-Z
9:20- 9:40 A-C	11:40-12:00 A-C	2:00-2:20 A-C
9:40-10:00 D-G	12:00-12:20 D-G	2:20-2:40 D-G
10:00-10:20 H-K	12:20-12:40 H-K	2:40-3:00 H-K
4:30P.M.-8:30 P.M. In addition to regular registration periods, graduate students and students taking evening and and/or Saturday classes may register at this time.		

September 20

FRESHMEN

8:00- 8:30 L-M
8:30- 9:00 N-R
9:00- 9:30 S-T
9:30-10:00 U-Z
10:00-10:30 A-C
10:30-11:00 D-G
11:00-11:30 H-K

4:30 P.M.-8:30 P.M. Graduate students, students taking evening only and/or Saturday classes, and unclassified (nondegree) students may register at this time.

September 21	Classes begin 8:00 A.M.
September 27	Program Change Day: 9:00 A.M.-12:00 M., 1:00 P.M.-4:00 P.M., 5:00 P.M.-7:00 P.M. All program changes must be completed this day. Only class drops will be accepted after this date.
October 3	Last day to withdraw from school to be eligible for a refund of fees.
October 4	Last day for refund applications to be submitted to the Registrar's Office for refund of fees.
October 17	Last day to withdraw from a course without receiving a letter grade.
December 2	Last day to drop a class or withdraw from school except under exceptional conditions.
December 11	Final examinations begin.
December 16	Final examinations end.

Registration Calendar

Winter Quarter, 1962

January 2

General registration for classes at Alton and East St. Louis. Students must register for classes at the location at which they plan to attend in accordance with the alphabetical registration calendar. Students registering at Alton will report to the Auditorium Building to pick up authorization-to-register permits. Students registering at East St. Louis will report to the west (9th Street) door of the main building for the authorization-to-register permits.

CLASS	HOURS COMPLETED
Freshman	47 or fewer
Sophomore	48 to 95
Junior	96 to 143
Senior	144 or more
Graduate	Degree completed
Unclassified	Nondegree seeking

SENIORS

8:00- 8:15 H-K
 8:15- 8:30 L-M
 8:30- 8:45 N-R
 8:45- 9:00 S-T
 9:00- 9:15 U-Z
 9:15- 9:30 A-C
 9:30- 9:45 D-G

SOPHOMORES

12:00-12:15 H-K
 12:15-12:30 L-M
 12:30-12:45 N-R
 12:45- 1:00 S-T
 1:00- 1:15 U-Z
 1:15- 1:30 A-C
 1:30- 1:45 D-G

JUNIORS

10:00-10:15 H-K
 10:15-10:30 L-M
 10:30-10:45 N-R
 10:45-11:00 S-T
 11:00-11:15 U-Z
 11:15-11:30 A-C
 11:30-11:45 D-G

FRESHMEN

1:45- 2:00 H-K
 2:00- 2:15 L-M
 2:15- 2:30 N-R
 2:30- 2:45 S-T
 2:45- 3:00 U-Z
 3:00- 3:15 A-C
 3:15- 3:30 D-G

	4:00 P.M.–8:00 P.M. In addition to regular registration periods, graduate students and students taking evening only and/or Saturday classes may register at this time.
January 3	6:00 P.M.–8:00 P.M. Graduate students, unclassified (non-degree) students and students taking evening only and/or Saturday classes may register at this time.
January 4	Classes begin 8:00 A.M.
January 9	Program Change Day: 9:00 A.M.–12:00 M., 1:00 P.M.–4:00 P.M., 5:00–7:00 P.M. All program changes must be completed this day. Only class drops will be accepted after this date.
January 15	Last day to withdraw from school to be eligible for a refund of fees.
January 16	Last day for refund applications to be submitted to the Registrar's Office for refund of fees.
January 29	Last day to withdraw from a course without receiving a letter grade.
March 3	Last day to drop a class or withdraw from school except under exceptional conditions.
March 14	Final examinations begin.
March 19	Final examinations end.

Registration Calendar

Spring Quarter, 1962

March 26

General registration for classes at Alton and East St. Louis Students must register for classes at the location at which they plan to attend in accordance with the alphabetical registration calendar. Students registering at Alton will report to the Auditorium Building to pick up authorization-to-register permits. Students registering at East St. Louis will report to the west (9th Street) door of the main building for the authorization-to-register permits.

CLASS	HOURS COMPLETED
Freshman	47 or fewer
Sophomore	48 to 95
Junior	96 to 143
Senior	144 or more
Graduate	Degree completed
Unclassified	Nondegree seeking

SENIORS	JUNIORS
8:00-8:15 D-G	10:00-10:15 D-G
8:15-8:30 H-K	10:15-10:30 H-K
8:30-8:45 L-M	10:30-10:45 L-M
8:45-9:00 N-R	10:45-11:00 N-R
9:00-9:15 S-T	11:00-11:15 S-T
9:15-9:30 U-Z	11:15-11:30 U-Z
9:30-9:45 A-C	11:30-11:45 A-C
SOPHOMORES	FRESHMAN
12:00-12:15 D-G	2:00- 2:15 D-G
12:15-12:30 H-K	2:15- 2:30 H-K
12:30-12:45 L-M	2:30- 2:45 L-M
12:45- 1:00 N-R	2:45- 3:00 N-R
1:00- 1:15 S-T	3:00- 3:15 S-T
1:15- 1:30 U-Z	3:15- 3:30 U-Z
1:30- 1:45 A-C	3:30- 3:45 A-C

	4:00 P.M.–8:00 P.M. In addition to regular registration periods graduate students and students taking evening only and/or Saturday classes may register at this time.
March 27	6:00 P.M.–8:00 P.M. Graduate students, unclassified (non-degree) students and students taking evening only and/or Saturday classes may register at this time.
March 28	Classes begin 8:00 A.M.
April 3	Program Change Day: 9:00 A.M.–12:00 M., 1:00 P.M.–4:00 P.M., 5:00 P.M.–7:00 P.M. All program changes must be completed this day. Only class drops will be accepted after this date.
April 7	Last day to withdraw from school to be eligible for a refund of fees.
April 9	Last day to withdraw from a course without receiving a letter grade.
May 29	Last day to drop a class or withdraw from school except under exceptional conditions.
June 6	Final examinations begin.
June 12	Final examinations end.
June 14	Commencement.

Maps of Edwardsville Campuses

THE FOLLOWING MAPS have been prepared to acquaint the students with the facilities of the Alton campus and the East St. Louis campus.

SUMMIT

9th

10th

OHIO

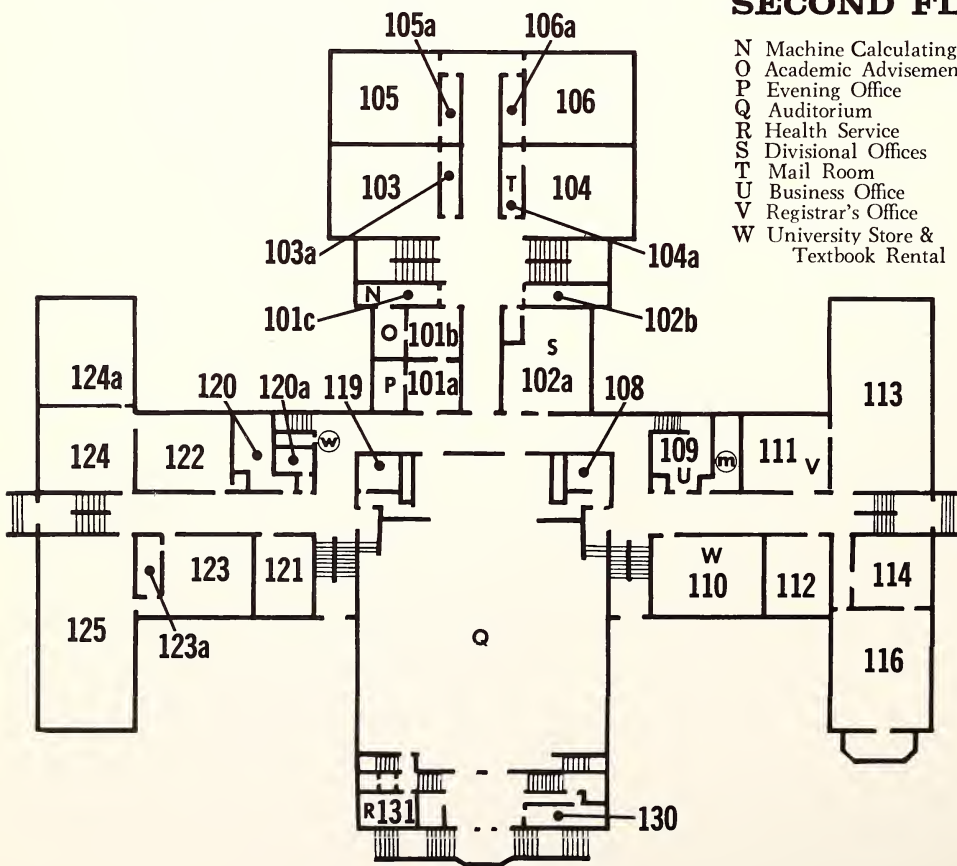
"R" BUILDING

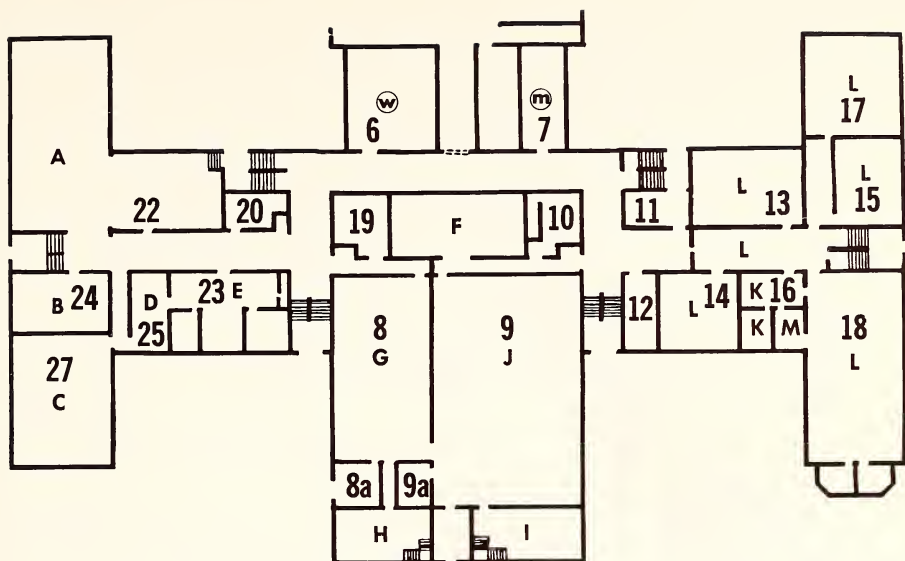
COLLEGE

- A Cafeteria
- B Faculty Lounge
- C Student Lounge
- D Student Employment
- E Office of Student Affairs
- F Mechanics Room
- G Women's Gym
- H Women's Shower
- I Men's Shower
- J Men's Gym
- K Public Administration & Metropolitan Affairs
- L Library Areas
- M Librarian's Office

Ⓜ—Women

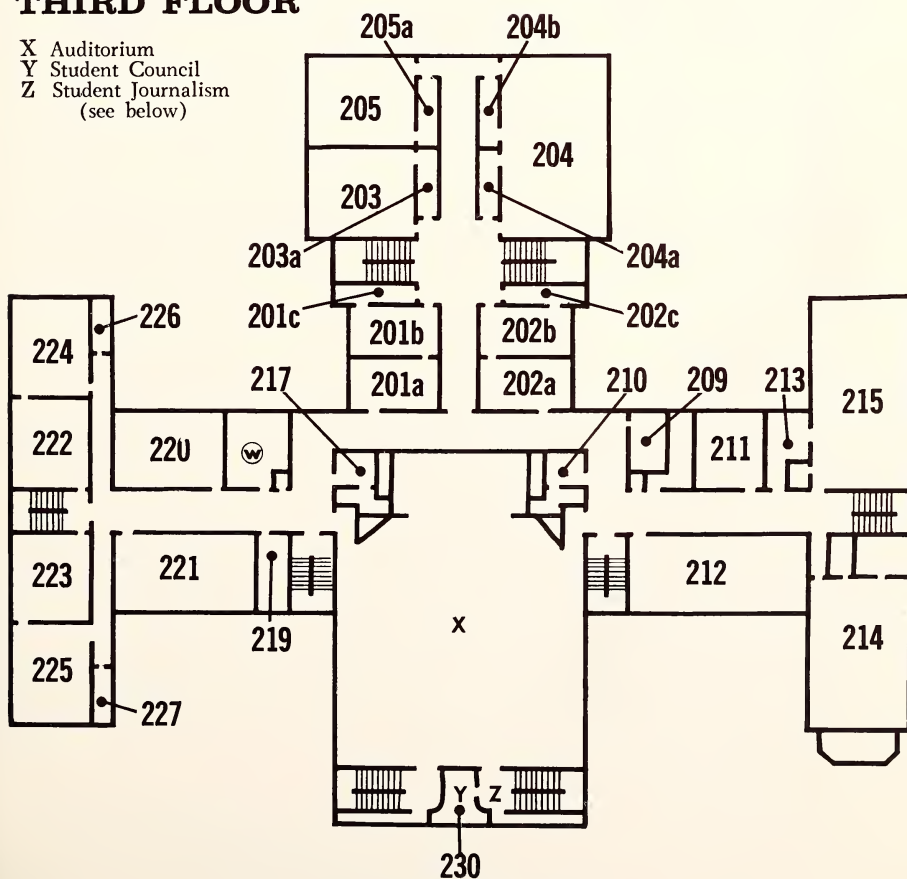
N Machine Calculating Room
O Academic Advisement
P Evening Office
Q Auditorium
R Health Service
S Divisional Offices
T Mail Room
U Business Office
V Registrar's Office
W University Store &
Textbook Rental



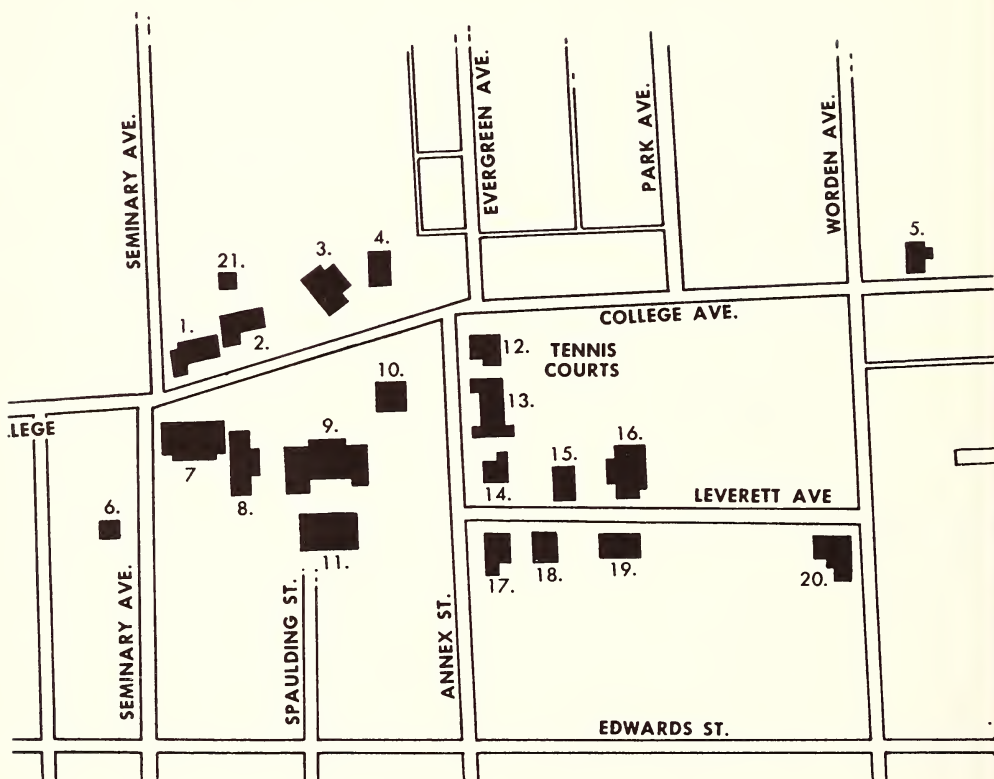


THIRD FLOOR

- X Auditorium
- Y Student Council
- Z Student Journalism
- (see below)



ALTON CAMPUS



ALTON CAMPUS

- | | | |
|--|-----------------------|-----------------------------|
| 1 Business Office | 6 Language Laboratory | 15 Humanities (HUM) |
| 2 Registrar | 7 Library | 16 Administration |
| 3 Student Union, Student Affairs, Student Employment and Placement and Health Service (SU) | 8 Fine Arts A (FAA) | Evening Division Offices |
| 4 Fine Arts C (FAC) | 9 Science (SCI) | Division Heads' Offices |
| 5 Education A - Madison County Mental Health Clinic (EDA) | 10 Auditorium (AUD) | Graduate Office |
| | 11 Gymnasium (Gym) | 17 Classrooms |
| | 12 Annex B (ANB) | 18 Social Studies (SS) |
| | 13 Annex A (ANA) | 19 Business Faculty Offices |
| | 14 Fine Arts B (FAB) | 20 Shurtleff Foundation |
| | | 21 Storage |

General Information

THIS BULLETIN contains the schedule of classes to be offered on the Edwardsville campuses, Alton and East St. Louis, for the fall, winter, and spring quarters of the 1961-62 school year. It also provides the student with information relative to advisement and registration, fees, various calendars of events, and allied information.

Classes offered during the summer session on the Edwardsville campuses will continue to appear in a separate summer session bulletin which is usually available during March of each year.

Class schedule information for the University's Carbondale campus may be secured from the General Publications, Carbondale.

Each student should keep this schedule for the entire school year to use for each quarter's registration.

ADMISSION REQUIREMENTS

NEW STUDENTS

A student must be officially admitted to the University before registration in classes will be permitted. New undergraduates and graduate students should initiate early action by contacting the Registrar's Office for the proper application for admission forms. High school graduates should have a transcript of their high school record sent to the Registrar's Office, Edwardsville, Illinois. Transfer students must have official transcripts from

each college or university previously attended sent directly to the Registrar's Office, Edwardsville, Illinois.

Students who plan to attend evening and/or Saturday classes only, should have completed admission requirements before the registration period.

A student transferring from the Carbondale campus should complete the re-entry form and request the Registrar's Office at Carbondale to send a transcript of his record to the Registrar's Office at Edwardsville before the registration period.

Students who have not completed the admission requirements by the start of the registration period will not be permitted to register.

RE-ENTERING STUDENTS

Students who have attended the University at some former time but not during the session immediately prior to the time they plan to re-enter should initiate action by contacting the Registrar's Office. Specific advisement and registration information will be furnished as they complete their re-entrance procedure with the Registrar's Office.

CURRENT STUDENTS

All students currently registered in the University will be continued in their present curriculum unless a change of major is made. A change of major is initiated with the student's adviser. This change should be made at the time of advisement, and the registrar's copy of the change form should accompany the student's registration. Changes of major made after a registration has been processed will not be reflected in the student's records until the next registration.

ADVISEMENT AND REGISTRATION

The Edwardsville campuses follow the pattern of general registration which permits students to complete registration for classes during a two-day period at the start of the fall quarter and a one-day period at the start of the winter and spring quarters.

Students must register for classes at the location at which they plan to attend in accordance with the alphabetical registration calendars pages ix-x, xi-xii, xiii-xiv.

Advisement of students and class sectioning has been made the responsibility of the University faculty. A Chief Academic Adviser will be

located at each academic center. Upper division students who have declared a major field will be assigned to divisional advisers. Arrangements for a conference with the major adviser should be scheduled as early as possible by the student in planning his program. Lower division students and those undecided as to a major field will be advised by the Chief Academic Adviser.

All entering freshmen must take the Guidance Test Battery prior to advisement and registration. Illinois residents who ranked in the lowest third of their graduating class must take the test battery before they can be considered for admission. Out-of-state students who rank in the lower one-half of their graduating classes must take the tests prior to admission. High school students are encouraged to take the Guidance Test Battery during the spring of their senior year and thus be ready for academic advisement during the summer. A complete set of dates and test centers is available from the Registrar's Office. Students who are not able to take the tests in the spring may make arrangements to be tested on one of the dates listed in the following calendar:

TESTING CALENDAR

Friday, July 7, 1961	East St. Louis
Wednesday, July 26, 1961	Alton
Friday, August 18, 1961	East St. Louis
Saturday, August 19, 1961	Alton
Saturday, August 26, 1961	East St. Louis
Saturday, September 2, 1961	Alton
Wednesday, September 6, 1961	East St. Louis
Friday, September 8, 1961	Alton
Saturday, September 9, 1961	East St. Louis
Wednesday, September 13, 1961	Alton

Transfer students are expected to take the tests unless they have their scores forwarded from their former school. These scores are not normally sent with one's transcript and should be requested from the appropriate office of the former school before the registration period.

New students planning to enter the University during the winter or spring quarters should initiate action by contacting the Registrar's Office. Specific advisement and registration information will be furnished as they complete their admission procedure.

During the registration periods a staff of faculty advisers will be available for consultation with students and for approving student programs.

PAYMENT OF FEES

Payment of fees will be made by each student at the time of registration.

FEES FOR A REGULAR QUARTER

Illinois students taking more than 8 hours will pay the following regular fees:

Tuition	\$42.00
Book rental	5.00
Activity fee	9.50
Student union building fund	5.00
Total	\$61.50

Illinois students taking 8 or fewer hours will pay the following fees:

Tuition	\$21.00
Book rental	2.50
Student union building fund	5.00
Total	\$28.50

(Optional activity fee \$9.50)

Once an option has been made by a student at the time of registration as to whether or not to pay the activity fee, such option is irrevocable.

Out-of-state students will pay an additional \$50 if they take more than eight hours, or an additional \$25 if they take eight hours or fewer.

In addition to the above, there are some physical education classes that require a special fee.

Students having special fee status such as scholarship holders, faculty and staff, will pay their respective fees according to the particular status.

The University reserves the right to change fees and have the change go into effect whenever the proper authorities so determine.

AUDITING OF COURSES

A student may register for courses in an "audit" status. He receives no letter grade and no credit for such courses. An auditor's registration card must be marked accordingly. He pays the same fees as though he were registering for credit. He is expected to attend regularly and is to determine from the instructor the amount of work expected of him. If an auditing student does not attend regularly, the instructor may determine that the student should not have the audited course placed on his record

card maintained in the Registrar's Office. A student registering for a course for credit may not later change to an audit status or vice versa except for fully justified reasons. Such a change will ordinarily require the academic dean's approval.

CHANGES AND WITHDRAWALS

A student is officially registered only for those courses appearing on his registration cards. Any change therefrom can be made only after fees are paid and must be made through an official program change. A student is considered officially registered after he has cleared his payment of fees at the Business Office.

A prescribed procedure must be followed by any student desiring to change his academic program or to withdraw from the University while the period for which he is registered is still in progress. Failure to follow the prescribed procedure will result in academic penalty.

Mere attendance does not constitute registration in a class, nor will attendance in a class for which a student is not registered be a basis for asking that a program change be approved permitting registration in that class.

A program change must be made in order to drop or add a course. A student may not drop a course merely by stopping attendance. If a student desires to drop a course during the second, third, or fourth week of a quarter, the change will be approved only when the reasons appear valid. If a student desires to drop a course after the fourth week, the change will be approved only under unusual conditions. In the last three weeks of a quarter changes will be approved only in extreme emergencies.

A student processing a program change is required to present his fee receipt program card at the Registrar's Office and must complete the following procedure.

The student must initiate approval for the change with his adviser. For changes made after the regularly scheduled program change day, the approved program change form must then be taken by the student to the Registrar's Office within twenty-four hours after approval by the adviser. After having been cleared with the Registrar's Office, program changes for which a program change fee is assessed must be presented to the Business Office for payment. The student immediately returns the program change to the Enrollment Center in the Registrar's Office for final processing. *A student has not completed his program change until he presents it to the enrollment center in the Registrar's Office.* No change is official until the preceding procedure is complete.

A program change day is listed in each registration calendar.

WITHDRAWAL FROM SCHOOL

A student who finds it necessary to withdraw from school while the quarter is in progress must report to the Registrar's Office to initiate official withdrawal action. No withdrawal will be permitted during the last two weeks of a quarter except under exceptional conditions. A refunding of fees is permitted only if a withdrawal is officially completed within the first two weeks of a quarter and if the application for a refund is received in the Registrar's Office within two weeks following the last regular registration period. See the registration calendars for the specific dates concerning withdrawal and refunding of fees.

CANCELLATION OF REGISTRATION

A registration including the payment of tuition and fees may be considered invalid if the student is declared to be ineligible to register due to scholastic reasons. The same situation may exist due to financial or disciplinary reasons if certified to the registrar by the director of the Office of Student Affairs.

PERSONAL DATA CHANGES

1. A CHANGE IN ADDRESS, whether local, home, or parents', is to be reported by the student to the Registrar's Office as soon as possible after the change occurs. The above addresses for a student are obtained from his Number 7 registration card when he first registers for a quarter during the year. Address changes are not made thereafter during the year unless they are reported as above by the student.

2. A CHANGE IN NAME is to be reported to the Enrollment Center in the Registrar's Office. A change for marital reasons will be made on the basis of a signed statement. Other changes may require the presenting of legal evidence.

3. A CHANGE IN MARITAL STATUS is to be reported to the Registrar's Office. A change will be made if it is based upon incorrect coding or punching. Any other change must be accompanied by a signed statement.

4. A CHANGE IN LEGAL RESIDENCE (whether an Illinois or

out-of-state resident) is to be requested on the Application to be Declared an Illinois Resident form in the Registrar's Office. Before the request is honored, the registrar must be satisfied that the student has met the regulations governing residency status as established by the Board of Trustees.

VETERANS' AND WAR ORPHANS' INFORMATION

The Edwardsville Campuses of Southern Illinois University are approved for veterans. Veterans eligible to receive benefits under the GI bill should contact the University veterans' adviser during registration periods. Public Law 550 expires in 1965. War orphans should discuss Public Law 634 benefits with the veterans' adviser.

Veterans enrolled under Public Law 550 and war orphans under Public Law 634 are subject to the following regulations regarding academic load required for proportional subsistence for the regular quarter.

Type of Enrollment	Number of Hours Required			
	UNDERGRADUATE		GRADUATE	
	QUARTER	SUMMER	QUARTER	SUMMER
Full-time enrollment	14	10	10	7
3/4-time enrollment	10-13	7-9	8-9	6
1/2-time enrollment	7-9	5-6	5-7	4-5
Less than 1/2-time enrollment	6 or less	4 or less	4 or less	3 or less

To be eligible for the benefits of Public Law 550 or Public Law 634, the student must be fully admitted and enrolled as a regular classified student making satisfactory progress in a degree program.

Veterans attending under one of the public laws should note that the Registrar's Office will certify enrollment and attendance to the Veteran's Administration for subsistence purposes only as of the date when fees were cleared at the Bursar's Office.

SIGN-UP PERIODS FOR BENEFITS

Veterans and war orphans eligible for benefits will sign a monthly attendance certification on the first Tuesday of each month starting November 7, 1961 at the Registrar's Office in Alton or East St. Louis.

Checks for the first sign-up period should not be expected before No-

vember 20. Veterans who fail to sign on the specified date will probably experience delay in receiving the check for that period.

RESPONSIBILITY OF THE STUDENT

Each student must assume responsibility for his progress by keeping an up-to-date record of the courses he has taken and by checking periodically with his adviser and the Registrar's Office. Responsibility for errors in program or in interpretation of regulations of the University rests entirely with the student.

Class Schedule Information

THE FOLLOWING material may be of value in interpreting the information appearing in the class schedule.

COURSE NUMBER AND HOURS

The column containing this information shows the number of the course first, followed by the number of hours of credit. Course numbers are three-digit numbers. In some cases the three digits may be followed by a letter which is also part of the course number. The number appearing after the hyphen denotes the hours of credit for the course. In some cases there may be more than one number following the course number such as 599-2 to 5. This represents a variable-hour course in which the student decides the number of hours for which he is going to register in consultation with his adviser.

The course numbering system is as follows:

- | | |
|---------|---|
| 000-099 | Course not properly falling in freshman, sophomore, etc. sequence |
| 100-199 | For freshmen |
| 200-299 | For sophomores |
| 300-399 | For juniors and seniors |
| 400-499 | For seniors and graduate students |
| 500-600 | For graduate students only |

PREREQUISITES

For the guidance of students many courses list the courses which

need to have been taken before the one under question can be taken. These prerequisites may be listed in a number of different ways. If only a number appears in the column, this refers to the division's own course. If the course is another division course, the division will be listed prior to the number. On advanced course levels registration in a course may require the consent of the instructor or of the department.

ACADEMIC LOAD

1. The normal class load for a student is sixteen quarter hours, with a maximum of eighteen hours.

2. A student with a 4.25 average or above for the preceding quarter may be allowed by the head of his division to take as many as twenty-one hours. In no case may a student carry or be credited with more than twenty-one hours in any quarter.

3. A student on probation may not take more than fourteen hours.

4. A person may not register for more than eight quarter hours if he is employed full time.

5. Veterans and war orphans must carry a minimum of 14 quarter hours to qualify for full-time training allowance.

6. The Selective Service System requires a minimum of 12 quarter hours to qualify for a student deferment.

7. The National Defense Education Act requires a minimum of 12 quarter hours to qualify for a student loan.

COURSES "BY APPOINTMENT" OR "TO BE ARRANGED"

Students registering for courses listed as "by appointment" or "to be arranged" should consult with the division head to determine time and place of meeting.

CHANGE OR CANCELLATION OF CLASSES

The University reserves the right to change or cancel any class.

FREE BUS TRANSPORTATION

To provide students with a broader program, certain upper division classes have been scheduled around a bus transportation schedule. Free bus service will be provided between Alton and East St. Louis on Mondays, Tuesdays, Thursdays, and Fridays.

Classes scheduled for inter-campus bus transportation meet twice weekly for periods of one and one-half or two hours.

The bus will depart from East St. Louis on the Ohio Street side and from Alton on College and Seminary streets.

Students taking courses on the bus schedule will not need to travel during the week of final examinations to take their tests. The examination will be proctored at the center at which the course does not meet by the chief academic adviser or a member of his staff.

Likewise, students will not need to travel to return their textbooks. The bookstore personnel will accept texts for courses on the bus schedule at the location different from the one at which the course meets, provided that the student makes clear this situation to the attendant at the time of book return; otherwise record confusion will result.

BUS SCHEDULE

DEPART	ARRIVE	DEPART	ARRIVE
EAST ST. LOUIS	ALTON	ALTON	EAST ST. LOUIS
8:00 A.M.	8:50 A.M.	9:00 A.M.	9:50 A.M.
10:00 A.M.	10:50 A.M.	11:00 A.M.	11:50 A.M.
12:00 M.	12:50 P.M.	1:00 P.M.	1:50 P.M.
2:00 P.M.	2:50 P.M.	3:00 P.M.	3:50 P.M.
4:00 P.M.	4:50 P.M.		

LISTING BY ACADEMIC UNIT

BUSINESS DIVISION:

Accounting	Marketing
Economics	Secretarial Science
Management	

EDUCATION DIVISION:

Administration	Guidance
Elementary	Health Education
Industrial	Instructional Materials
Secondary	Physical Education
Special	Psychology

FINE ARTS DIVISION:

Art	Speech
Music	Theater

HUMANITIES DIVISION:

English	Journalism
Foreign Languages	Philosophy

SCIENCE AND TECHNOLOGY DIVISION:

Applied Science	Mathematics
Astronomy	Physics
Botany	Physiology
Chemistry	Zoology

SOCIAL SCIENCES DIVISION:

Anthropology	History
Geography	Sociology
Government	

Schedule of Classes

Fall Quarter

1961

The following material may be of value in interpreting the information appearing in the class schedule.

B Course offered only at one campus but scheduled so that students from the other campus may attend by using free bus transportation. See bus schedule on back cover.

E Evening class.

ES Evening and Saturday class.

S Saturday class.

Alton Campus

FALL

East St. Louis Campus

SECTION	TIME	DAYS	ROOM	COURSE NO. & CREDIT HOURS	DESCRIPTIVE TITLE	ACCOUNTING (ACCT)	REMARKS	SECTION	TIME	DAYS	ROOM
ACCOUNTING (ACCT)											
1	8:00-8:50	MTuWTh	ANA 1	251-4	Elementary Accounting I	<i>Prereq.: sophomore standing.</i>		51	10:00-10:50	MTu	ThF
2	10:00-10:50	MTuWTh	ANA 1					52	1:00-1:50	MTu	ThF
3	3:00-3:50	MTu ThF	ANA 1					E 53	6:20-8:10PM	M	Th
E 4	6:20-8:10PM	M Th	ANA 1					E 54	8:20-10:10PM	Tu	F
E 5	6:20-8:10PM	Tu F	ANA 1					E 55	6:20-8:10PM	W	
E 6	6:20-8:10PM	W	ANA 1						9:00-10:50AM	Saturday	224
1	12:00-12:50	Saturday	ANA 1	253-4	Elementary Accounting III	<i>Prereq.: 252.</i>		E 51	6:20-8:10PM	Tu	F
E 1	5:55-8:10PM	Tu F	ANA 2	331-5	Tax Accounting	<i>Prereq.: 253.</i>		51	9:00-9:50	MTaWThF	221
1	1:00-2:25	M Th	ANA 2	B341-3	Cost Accounting	<i>Prereq.: 253.</i>			Offered at Alton. See Bus Sched. on back cover.		
				341-3	Cost Accounting	<i>Prereq.: 253.</i>		E 51	5:30-8:10PM	W	221
1	9:00-9:50	MTu ThF	ANA 1	351-4	Advanced Accounting I	<i>Prereq.: 253.</i>		51	2:00-2:50	MTu ThF	205
E 2	6:20-8:10PM	M Th	ANA 2					E 52	6:20-8:10PM	M Th	224
E 1	8:20-10:35PM	Tu F	ANA 2	356-5	Auditing	<i>Prereq.: 353 or consent of instructor.</i>					
Offered at E. St. Louis. See Bus Sched. on back cover.											
				B461-4	C.P.A. and Advanced Accounting Problems	<i>Prereq.: 341 and 353. Offered once annually and only at East St. Louis.</i>		51	12:00-1:50	Tu	F
ANTHROPOLOGY (ANTH)											
1	9:00-10:50	Tu F	ANA 8	B110-4	Ways of Mankind	<i>Prereq.: none.</i>		Offered at Alton. See Bus Sched. on back cover.			
E 1	8:20-10:10PM	W	SS 21	308-4	Peoples and Cultures of the Old World	<i>Prereq.: none.</i>					
	11:00-12:50PM	Saturday	SS 21								
APPLIED SCIENCE (AP SCI)											
1	8:00-9:50	Tu ThF	ANA 7	101-3	Engineering Drawing I	<i>Prereq.: none.</i>		51	2:00-4:50	M	Th
2	12:00-1:50	MTu F	ANA 7					E 52	6:20-9:10PM	M	Th
3	3:00-4:50	MTu F	ANA 7								
E 4	6:20-9:10PM	Tu F	ANA 7								
E 1	6:20-7:45PM	Tu F	SCI 109	260-3	Analytical Mechanics (Statics)	<i>Prereq.: Math 251 (or concurrent enrollment) and Physics 211 (or concurrent enrollment).</i>		E 51	8:20-9:45PM	M	Th
						<i>Prereq.: 101 and Math 112.</i>					202A
1	11:00-2:50	Tu F	SCI 109	B263-4	Surveying I			Offered at Alton. See Bus Sched. on back cover.			
1	2:00-3:50	MTu ThF	FAA 2	100-5	Basic Studio	<i>Prereq.: none. 15 hours 100 for all studio courses other than 300.</i>		51	10:00-11:50	MTu ThF	214
	2:00-2:50	W							10:00-10:50	W	214
ART (ART)											

1	9:00-9:50	M	1nF	FAA 4	120-3	Art Appreciation	Prereq.: none. Satisfies general University requirement.	51	9:00-9:50	M	W	F	215
2	11:00-11:50	M	ThF	FAA 4				52	2:00-2:50	M	W	F	106
E 3	6:20-7:45pm	Tu	F	FAA 4				E 53	6:20-7:45pm	M	Th		104
1	2:00-3:50	MTu	ThF	FAA 3	203-4	Beginning Ceramics	Prereq.: 15 hours of 100.						
1	11:00-12:50	MTuWTh		FAA 21	245-4	Figure	Prereq.: 15 hours of 100.						
1	2:00-3:50	MTu	ThF	Alby St. Stu.	250-4	Oil Painting	Prereq.: 12 hours of 245 or consent of instructor.						
1	9:00-10:50	M	W	F	300-4	Art Education	Prereq.: none. For elementary education majors and art education majors. Student may elect up to 12 hours. (At East St. Louis, students taking this course for the first time should enroll for the fall or spring quarter.)	51	1:00-2:50	M	W	F	214
2	12:00-1:50	M	W	F	FAA 23								
E 1	6:20-9:50pm	Tu	F	FAA 3	302-4	Beginning and Advanced Ceramics	Prereq.: 203 or consent of instructor.						
1	2:00-3:50	MTu	ThF	Alby St. Stu.	320-4	Advanced Painting	Prereq.: 12 hours of 250 or consent of instructor.						
1	Arranged	Arranged			325-4	Studio	Prereq.: consent of instructor.	51	Arranged	Arranged	Arranged	Arranged	
E 1	6:20-8:10pm	M	Th	FAA 4	326-4	History of World Art I	Prereq.: consent of instructor.						
1	9:00-10:50	MTu	ThF	Alby St. Stu.	358-4	Prints	Prereq.: 245 and 250 or consent of instructor.						
1	Arranged	Arranged			401-4	Research in Painting	Prereq.: consent of instructor.						
1	Arranged	Arranged			410-4	Research in Prints	Prereq.: consent of instructor.						
BOTANY (BOT)													
1	1:00-1:50	Tu	ThF	SCI 102	101-5	General Botany	Prereq.: none.	51	10:00-10:50	M	W	F	112
2	12:00-1:50	M	W	SCI 205					10:00-11:50	Tu	Th		116
	1:00-1:50	Tu	ThF	SCI 102				52	10:00-10:50	M	W	F	112
	10:00-12:00	Tu	Th	SCI 203					8:00-9:50	M	W		116
BOTANY (BOT)													
					202-5	General Botany	Prereq.: none.	E 51	6:00-7:15pm	Tu	F	112	
									7:25-9:15pm	Tu	F	116	
					411-5	The Bryophytes and Pteridophytes	Prereq.: 101 and 202 and 310.	51	1:00-1:50	M	W	F	112
									2:00-3:50	M	W		116
CHEMISTRY (CHEM)													
1	10:00-10:50	MTu	Th	SCI 300	101-4	General Chemistry	Prereq.: none.	51	2:00-2:50	M	W	F	224
	8:00-10:50	W		SCI 306					10:00-11:50	Tu	Th		125
2	10:00-10:50	MTu	Th	SCI 300				52	2:00-2:50	M	W	F	224
	8:00-10:50	F		SCI 306					3:00-4:50	M	W		125
								ES 53	6:00-7:30pm	M	Th	112	
									8:00-11:50am	Saturday		125	
FALL													

Alton Campus

FALL

East St. Louis Campus

SECTION	TIME	DAYS	ROOM	COURSE NO. & CREDIT HOURS	DESCRIPTIVE TITLE	REMARKS	SECTION	TIME	DAYS	ROOM
CHEMISTRY (CHEM) (Continued)										
1	8:00-8:50	M W F	SCI 300	111-5	Chemical Principles and Inorganic Chemistry	<i>Prereq.: none.</i>	51	8:00-8:50	MTu ThF	113
	8:00-8:50	Th	SCI 301					10:00-11:50	M W	125
2	8:00-10:50	Tu	SCI 306				52	8:00-8:50	MTu ThF	113
	8:00-8:50	M W F	SCI 300					1:00-2:50	M W	125
	8:00-8:50	Tu	SCI 301				53	8:00-8:50	MTu ThF	113
3	8:00-10:50	Th	SCI 306					1:00-2:50	Tu Th	125
	8:00-8:50	M W F	SCI 300				54	8:00-8:50	MTu ThF	113
	12:00-12:50	M	SCI 301					3:00-4:50	Tu Th	125
4	12:00-2:50	W	SCI 306				55	12:00-12:50	MTu ThF	113
	12:00-12:50	M W F	SCI 300					10:00-11:50	M W	125
	12:00-12:50	Th	SCI 301				56	12:00-12:50	MTu ThF	113
	12:00-2:50	Tu	SCI 306					1:00-2:50	M W	125
5	12:00-12:50	M W F	SCI 300				57	12:00-12:50	MTu ThF	113
	12:00-12:50	Tu	SCI 301					1:00-2:50	Tu Th	125
6	12:00-2:50	Th	SCI 306				58	12:00-12:50	MTu ThF	113
	12:00-12:50	M W F	SCI 300					3:00-4:50	Tu Th	125
	2:00-2:50	Th	SCI 208							
	2:00-4:50	M	SCI 306							
1	1:00-1:50	Tu Th	SCI 301	221-3	Qualitative Analysis	<i>Prereq.: 113.</i>	E 51	6:00-7:00PM	M Th	202B
	1:00-3:50	F	SCI 307					Lab. to be arranged.		
E 1	6:00-7:15PM	Tu F	SCI 301	341-4	Organic Chemistry	<i>Prereq.: 113.</i>	51	10:00-10:50	M W F	205
E 2	7:25-10:15PM	Tu	SCI 307					1:00-3:50	Tu	123
	6:00-7:15PM	Tu	SCI 301				52	10:00-10:50	M W F	205
E 1	7:25-10:15PM	F	SCI 307					1:00-3:50	Th	123
	7:00-7:50PM	W	SCI 301	375-0 to 1	Senior Seminar	<i>Prereq.: senior with major in chemistry.</i>	51	Arranged	Arranged	
Offered at E. St. Louis. See Bus Sched. on back cover.										
				B411-3	Intermediate Inorganic Chemistry	<i>Prereq.: 331.</i>	51	12:00-1:25	Tu F	224
1	11:00-11:50	M W F	SCI 301	461-4	Physical Chemistry	<i>Prereq.: 331 and 343 and Math 253 and Phys 213.</i>	E 51	6:00-7:30PM	M Th	202A
	1:00-3:50	Th	SCI 303					Lab. to be arranged.		
ECONOMICS (ECON)										
1	11:00-11:50	MTuWThF	SCI 208	205-5	Survey of Economic Principles	<i>Prereq.: sophomore standing.</i>	51	11:00-11:50	MTuWThF	204
E 2	5:55-8:10PM	Tu F	ANA 1				E 52	5:55-8:10PM	M Th	225
ES 3	5:55-8:10PM	W	ANA 2				E 53	5:55-8:10PM	Tu F	225
	9:00-11:15AM	Saturday	ANA 2							
1	2:00-2:50	MTu ThF	ANA 6	206-4	Economic Principles and	<i>Prereq.: 205.</i>	51	9:00-9:50	MTu ThF	103
							E 52	6:00-8:10PM	Tu F	215

307-4	Economic and Business Statistics	Prereq.: 205, Math 106 recommended.	E 51	5:55-8:10PM	M	Th	106
1	9:00-9:50	MTu	ThF	ANA 6			
E 1	6:20-8:10PM	Tu	F	ANB 21			
1	1:00-1:50	MTuWTh		ANA 6			
Offered at E. St. Louis. See Bus Sched. on back cover.							
B330-4	Public Finance I: National	Prereq.: 206, or 205 and consent of instructor.	51	2:00-3:50	Tu	F	215
B418-4	Economic History of Europe	Prereq.: 206, or 205 and consent of instructor.	Offered at Alton. See Bus Sched. on back cover.				
E 1	8:20-9:45PM	M	Th	ANA 6			
Business Cycles							
470-3	Business Cycles	Prereq.: 315 or consent of instructor.					
EDUCATIONAL ADMINISTRATION (ED AD)							
331-3	The American Educational Systems	Prereq.: none.					
B331-3	The American Educational Systems	Prereq.: none.	51	12:00-1:25	M	Th	105
B355-4	Philosophy of Education	Prereq.: none.	Offered at Alton. See Bus Sched. on back cover.				
E 2	9:00-10:50	Tu	F	AUD 2			
Offered at E. St. Louis. See Bus Sched. on back cover.							
E 2	6:20-8:10PM	Tu	F	AUD 4			124A
355-4	Philosophy of Education	Prereq.: none.					
424-4	School Administration	Prereq.: none. 4 additional sessions to be arranged.					
E 1	5:30-8:10PM	M					
456-4	School Supervision	Prereq.: none. 4 additional sessions to be arranged.	E 51	5:30-8:10PM		Th	AUD
500-4	Research Methods	Prereq.: graduate standing. Guid 422 recommended.	S 51	9:00-11:40AM	Saturday		202B
520-4	Illinois School Law	Prereq.: graduate standing.					
533-4	School Buildings	Prereq.: graduate standing.	E 51	5:30-8:10PM	M		201A
554-4	Contrasting Philosophies of Education	Prereq.: graduate standing.					
575-2 to 4	Individual Research	Prereq.: graduate standing and consent of instructor.	51	Arranged	Arranged	Arranged	Arranged
EDUCATION ELEMENTARY (ED EL)							
203-3	Understanding the Elementary School Child	Prereq.: Psyc 201. 2 hours per week observation arranged.					
1	1:00-1:50	M	Th	ANA 5			
313-4	Children's Literature	Prereq.: none. Same as IM 405.					
E 1	4:20-6:10PM	M	Th	ANA 8			
FALL							

Alton Campus

FALL

East St. Louis Campus

SECTION	TIME	DAYS	ROOM	COURSE NO. & CREDIT HOURS	DESCRIPTIVE TITLE	REMARKS	SECTION	TIME	DAYS	ROOM
EDUCATION ELEMENTARY (ED EL) (Continued)										
1	1:00-2:50	Tu	F	ANA 2	B314-4 Elementary School Methods	<i>Prereq.: Guid 305.</i>	Offered at Alton. See Bus Sched. on back cover.			
				316-4	Kindergarten-Primary Methods and Curriculum	<i>Prereq.: Guid 305.</i>	E 51	4:20-6:10PM	M Th	105
Offered at E. St. Louis. See Bus Sched. on back cover.										
				B337-4	Reading in the Elementary Schools	<i>Prereq.: 314 or 316, and Guid 305.</i>	51	2:00-3:50	M Th	105
E 1	4:20-6:10PM	Tu	F	AUD 2	Reading in the Elementary Schools	<i>Prereq.: 314 or 316, and Guid 305.</i>				
1	Arranged	Arranged	Arranged	350D-8 to 12	Kindergarten-Primary Student Teaching	<i>Prereq.: must apply to education division two quarters in advance.</i>	51	Arranged	Arranged	Arranged
1	Arranged	Arranged	Arranged	350E-4 to 8	Advanced Kindergarten- Primary Student Teaching	<i>Prereq.: 350D.</i>	51	Arranged	Arranged	Arranged
1	Arranged	Arranged	Arranged	351D-8 to 12	Elementary Student Teaching	<i>Prereq.: must apply to education division two quarters in advance.</i>	51	Arranged	Arranged	Arranged
1	Arranged	Arranged	Arranged	351E-4 to 8	Advanced Elementary Student Teaching	<i>Prereq.: 351D.</i>	51	Arranged	Arranged	Arranged
				415-4	Improvement of Instruction in Arithmetic in the Elementary School	<i>Prereq.: Math 210 or consent of instructor. 4 additional sessions to be arranged.</i>	S 51	9:00-11:40AM	Saturday	201A
E 1	5:30-8:10PM	Th	SS 1	437-4	Problems in Reading	<i>Prereq.: 337. 4 additional sessions to be arranged.</i>				
				442-4	Materials and Methods in Elementary School Science	<i>Prereq.: none. 4 additional sessions to be arranged.</i>	E 51	5:30-8:10PM	F	212
				461-4	The Elementary School Curriculum	<i>Prereq.: none. 4 additional sessions to be arranged. Not open to students who have had Ed Ad 460.</i>	E 51	5:30-8:10PM	Th	201A
				505-4	Improvement of Reading Instruction	<i>Prereq.: graduate standing; not for students who have had 337 or 437.</i>	E 51	5:30-8:10PM	W	201A
1	Arranged	Arranged	Arranged	507-2 to 4	Readings in Reading	<i>Prereq.: graduate standing and consent of instructor.</i>	51	Arranged	Arranged	Arranged
E 1	5:30-8:10PM	W	ANA 6	542-4	Language Arts in the Elementary School	<i>Prereq.: graduate standing.</i>				
1	Arranged	Arranged	Arranged	575-2 to 4	Individual Research	<i>Prereq.: graduate standing and consent of instructor.</i>	51	Arranged	Arranged	Arranged
EDUCATION INDUSTRIAL (ED I)										
				407-2	Occupational Analysis	<i>Prereq.: none</i>	F 51	5:30-8:10PM	Tu	AUD

Offered at E. St. Louis, See Bus Sched. on back cover.		High School Methods		Prereq.: Guid 305.		51		2:00-3:50		M Th		202A	
E 1	4:20-6:10PM	M	Th	ANA 2	High School Methods	Prereq.: Guid 305.	51	Arranged	Arranged	Arranged	Arranged	Arranged	Arranged
1	Arranged	Arranged	Arranged	Arranged	352D-8 to 12 Secondary Student Teaching	Prereq.: must apply to education division two quarters in advance.	51	Arranged	Arranged	Arranged	Arranged	Arranged	Arranged
1	Arranged	Arranged	Arranged	Arranged	352E-4 to 8 Secondary Student Teaching	Prereq.: 352D.	51	Arranged	Arranged	Arranged	Arranged	Arranged	Arranged
E 1	5:30-8:10PM	W		AUD 4	The Junior High School	Prereq.: none. 4 additional sessions to be arranged.	E 51	5:30-8:10PM	Tu			201B	201B
					Extra-Class Activities	Prereq.: none. 4 additional sessions to be arranged.							
S 1	9:00-11:40AM	Saturday		ANA 6	Teaching the Natural Sciences in Secondary Schools	Prereq.: 315 or consent of instructor. 4 additional sessions to be arranged.	E 51	5:30-8:10PM	W			201B	201B
					Improvement of Reading Instruction	Prereq.: graduate standing.	S 51	9:00-11:40AM	Saturday			203	203
1	Arranged	Arranged	Arranged	Arranged	Workshop in High School Curriculum	Prereq.: graduate standing.	51	Arranged	Arranged	Arranged	Arranged	Arranged	Arranged
					Individual Research	Prereq.: graduate standing and consent of instructor.							
EDUCATION SPECIAL (ED SP)													
E 1	5:30-8:10PM	M		AUD 4	Problems and Characteristics of the Mentally Retarded	Prereq.: Guid 305 or Psych 301 or 303. 4 additional sessions to be arranged.	E 51	5:30-8:10PM	Tu			212	212
					Education of Gifted Children	Prereq.: Guid 305 or Psych 301 or 303. 4 additional sessions to be arranged.							
					Directed Observation of Exceptional Children	Prereq.: consent of instructor. Must be taken with 410. 4 additional sessions to be arranged.	E 51	5:30-8:10PM	Tu			212	212
					The Exceptional Child	Prereq.: Guid 305 or Psych 301 or 303. 4 additional sessions to be arranged.	E 51	5:30-8:10PM	W			203	203
ENGLISH (ENG)													
1A	11:00-11:50	MTu	F	ANA 2	Composition	Prereq.: test score necessary for all sections.	51A	11:00-11:50	M W F			211	211
2A	2:00-2:50	MTu	F	AUD 4			52B	9:00-9:50	MTu ThF			211	211
3B	8:00-8:50	MTu	ThF	AUD 3			53B	9:00-9:50	MTu ThF			201B	201B
4B	8:00-8:50	MTu	ThF	AUD 3			54B	10:00-10:50	MTu ThF			211	211
5B	9:00-9:50	MTu	ThF	SCI 103			55B	11:00-11:50	MTu ThF			201B	201B
6B	9:00-9:50	MTu	ThF	AUD 3			56B	12:00-12:50	MTu ThF			211	211
7B	10:00-10:50	MTu	ThF	SCI 102			57B	1:00-1:50	MTu ThF			211	211
8B	10:00-10:50	MTu	ThF	AUD 3			58B	1:00-1:50	MTu ThF			201B	201B
9B	11:00-11:50	MTu	ThF	AUD 3			59B	2:00-2:50	MTu ThF			211	211
10B	12:00-12:50	MTu	ThF	ANB 21			60B	3:00-3:50	MTu ThF			211	211
11B	1:00-1:50	MTu	ThF	HUM 2			E 61B	6:20-8:10PM	M Th			211	211
12B	1:00-1:50	MTu	ThF	AUD 3			E 62B	8:20-10:10PM	M Th			211	211
13B	1:00-1:50	MTu	ThF	AUD 4			E 63B	8:20-10:10PM	M Th			201B	201B
14B	3:00-3:50	MTu	ThF	AUD 1			E 64B	6:20-8:10PM	Tu F			211	211

Alton Campus

FALL

East St. Louis Campus

SECTION	TIME	DAYS	ROOM	COURSE NO. & CREDIT HOURS	DESCRIPTIVE TITLE	ENGLISH (ENG) (Continued)	REMARKS	SECTION	TIME	DAYS	ROOM
ENGLISH (ENG) (Continued)											
15B	3:00-3:50	MTu ThF	AUD 3					E 65B	8:20-10:10PM	Tu F	211
E 16B	8:20-10:10PM	M Th	AUD 1					ES 66B	6:20-8:10PM	W	211
E 17B	8:20-10:10PM	M Th	AUD 3						9:00-10:50AM	Saturday	211
E 18B	6:20-8:10PM	Tu F	HUM 2					67C	8:00-8:50	MTuWThF	211
E 19B	6:20-8:10PM	Tu F	SS 1					68C	12:00-12:50	MTuWThF	201B
E 20B	8:20-10:10PM	Tu F	AUD 1					69C	2:00-2:50	MTaWThF	201B
E 21B	8:20-10:10PM	Tu F	AUD 3								
22C	12:00-12:50	MTuWThF	AUD 3								
23C	2:00-2:50	MTuWThF	AUD 3								
ES 1B	8:20-10:10PM	W	AUD 1					51B	9:00-9:50	MTu ThF	224
2B	11:00-12:50PM	Saturday	AUD 1					ES 52B	6:20-8:10PM	W	220
	8:00-8:50	MTu ThF	AUD 4						9:00-10:50AM	Saturday	220
1B	2:00-2:50	MTu ThF	ANA 2					ES 51B	8:20-10:10 PM	W	201B
ES 2B	6:20-8:10PM	W	AUD 3						11:00-12:50PM	Saturday	201B
	9:00-10:50AM	Saturday	AUD 3					52B	8:00-8:50	MTu ThF	112
E 1	6:20-7:45PM	M Th	AUD 5								
1	8:00-8:50	M W F	AUD 5					51	8:00-8:50	M W F	204
E 1	8:20-10:10PM	Tu F	AUD 4					E 51	6:20-7:45PM	M Th	113
1	9:00-9:50	MTu ThF	ANB 1					51	1:00-1:50	MTu ThF	203
1	11:00-12:50	Tu F	AUD 4					51	10:00-10:50	MTu ThF	201B
Offered at E. St. Louis. See Bus Sched. on back cover.								E 52	6:20-8:10PM	M Th	105
									Offered at Alton. See Bus Sched. on back cover.		
Offered at E. St. Louis. See Bus Sched. on back cover.								51	10:00-11:50	M Th	201A
									Offered once annually and only at East St. Louis.		
Offered at E. St. Louis. See Bus Sched. on back cover.								51	2:00-3:50	M Th	201A
									Offered once annually and only at East St. Louis.		
1	3:00-3:50	MTu Th	AUD 4					E 51	8:20-9:45PM	M Th	112
1	1:00-2:50	Tu F	HUM 22								
ES 1	8:20-10:10PM	W	AUD 4								
	11:00-12:50PM	Saturday	AUD 4								

FOREIGN LANGUAGES (FL)

FRENCH (FR)

Elementary French

101-4

1 HUM 2 MTu ThF
2 HUM 2 MTu ThF
E 3 HUM 2 M Th
1 ANA 8 Tu F

Prereq.: none.

Intermediate Course

B151-3

Prereq.: French 103 or 2 years of high school French. Offered once annually and only at Alton.

French Contemporary Novel

304-3

E 1 HUM 22 M Th

Prereq.: 2 years of French or the equivalent.

GERMAN (GER)

Elementary German

101-4

1 HUM 2 MTuW F
2 HUM 2 MTuWTh
3 SS 1 MTuWTh
E 4 HUM 2 M Th
1 HUM 22 Tu F

Prereq.: none.

Intermediate Course

B151-3

Prereq.: 103.

Introduction to German
Classical Literature

311-4

E 1 HUM 22 M Th

Prereq.: 2 years of German or the equivalent.

LATIN (LAT)

Cicero's Essays

152-4

ES 1 HUM 2 W
9:00-10:50AM Saturday

Prereq.: 2 years of high school Latin or consent of instructor.

RUSSIAN (RUSS)

Elementary Russian

B101-4

Offered at E. St. Louis, See Bus Sched. on back cover.

Prereq.: none. Offered once annually and only at East St. Louis.

Intermediate Composition
and Reading

151-3

Prereq.: 103.

51 12:00-1:50 M Th 201A
E 52 Tu F 201A
E 51 Tu F 201A

SPANISH (SPAN)

Elementary Spanish

101-4

1 HUM 2 MTu ThF

Prereq.: none.

Intermediate Course

151-3

Prereq.: 103.

51 3:00-3:50 MTu ThF 203
E 52 Tu F 202B
E 51 Tu F 202A

GEOGRAPHY (GEOG)

Cultural Geography

100-5

1 AUD 5 MTuW F
8:00-8:50 Th 2022
2 AUD 5 MTuW F 2022
3 AUD 5 Th 2022
4 AUD 5 SS 1 Th 2022
1:00-1:50 MTuWTh 2022
12:00-12:50 F 2022

Prereq.: none.

FALL

Offered at Alton, See Bus Sched. on back cover.

Alton Campus

FALL

East St. Louis Campus

SECTION	TIME	DAYS	ROOM	COURSE NO. & CREDIT HOURS	DESCRIPTIVE TITLE	REMARKS	SECTION	TIME	DAYS	ROOM
GEOGRAPHY (GEOG) (Continued)										
5	1:00-1:50	MTuWTh	AUD 5				E 55	5:55-8:10PM	M	Th
	1:00-1:50	F	ANA 5							
6	1:00-1:50	MTuWTh	AUD 5							
	1:00-1:50	F	SS 1							
E 7	5:55-8:10PM	Tu	ANA 5							
1	9:00-9:50	MTuWThF	ANA 5	101-5	Physical Geography	Prereq.: none. Natural science credit for education majors.	51	9:00-9:50	MTuWThF	222
1	11:00-11:50	MTuWThF	ANA 5	211-5	Economic Geography	Prereq.: none. Required for business majors.	E 51	5:55-8:10PM	Tu	F
E 2	5:55-8:10PM	M	ANA 5	B212-3	Map Reading and Interpretation	Prereq.: none. Natural science credit for education majors. Offered once annually and only at East St. Louis.	51	2:00-3:50	M	Th
Offered at E. St. Louis. See Bus Sched. on back cover.										
1	1:00-2:50	Tu	SS 21	B310-4	Meteorology	Prereq.: none. Natural science credit for education majors. Offered every other year and only at Alton.	Offered at Alton. See Bus Sched. on back cover.			
				314-4	Geography of Anglo-America	Prereq.: none. Natural science credit for education majors.	E 51	8:20-10:10PM	M	Th
				315-4	Geography of Europe	Prereq.: none. Natural science credit for education majors.	51	11:00-11:50	MTuWTh	222
1	10:00-10:50	MTuW	F	316-4	Geography of South America	Prereq.: none. Natural science credit for education majors.				
Offered at E. St. Louis. See Bus Sched. on back cover.										
				B324-4	Restoration and Conservation of Natural Resources	Prereq.: none. Natural science credit for education majors.	51	12:00-1:50	M	Th
ES 1	6:20-8:10PM	W	SS 1	420-4	Geography of Africa	Prereq.: 100 or permission of instructor. Natural science credit for education majors.				
	9:00-10:50AM	Saturday	SS 1			Prereq.: five hours of history or government.	ES 51	8:20-10:10PM 11:00-12:50PM	W Saturday	222 222
GOVERNMENT (GOV)										
1	8:00-8:50	MTuWThF	AUD 1	190-5	American Government	Prereq.: none.	51	8:00-8:50	MTuWThF	212
2	9:00-9:50	MTuWThF	AUD 1				52	1:00-1:50	MTuWThF	204
3	11:00-11:50	MTuWThF	SCI 300				E 53	5:55-8:10PM	M	Th
4	1:00-1:50	MTuWThF	ANA 4							
5	2:00-2:50	MTuWThF	ANB 1							
E 6	5:55-8:10PM	Tu	F	AUD 3						

1	10:00-10:50	MTuWTh	SCI 209	232-4	State and Local Government	<i>Prereq.: 101 or 190 or 231.</i>				
E 1	8:20-9:45PM	M Th	ANR 1	315-3	Administration of Justice	<i>Prereq.: 101 or 190 or 231.</i>				
Offered at E, St. Louis. See Bus Sched. on back cover.				B361-3	Selected Problems in Public Administration and Policy Formulation.	<i>Prereq.: 101 or 190 or 231. Offered only at East St. Louis.</i>	51	2:00-3:25	M Th	225
1	11:00-12:50	Tu F	SS 21	B370-4 380-4	International Relations Political Parties	<i>Prereq.: 101 or 190 or 231.</i>	ES 51	Offered at Alton. See Bus Sched. on back cover. 6:20-8:10PM W 105 9:00-10:50AM Saturday 105		
				390-5	Principles of Comparative and Foreign Governments	<i>Prereq.: 101 or 190 or 231.</i>	51	9:00-9:50	MTuWThF	112
Offered at E, St. Louis. See Bus Sched. on back cover.				B484-4	Ancient and Medieval Political Theories	<i>Prereq.: six hours of government or philosophy. May be counted as credit towards government or philosophy.</i>	51	10:00-11:50	M Th	202B
GUIDANCE (GUID)										
Offered at E, St. Louis. See Bus Sched. on back cover.				B305-4	Educational Psychology	<i>Prereq.: Psyc 201.</i>	51	2:00-3:50	M Th	104
1	11:00-12:50	Tu F	SCI 102	305-4	Educational Psychology	<i>Prereq.: Psyc 201.</i>	E 52	Offered at Alton. See Bus Sched. on back cover. 6:20-8:10PM Tu F 105		
E 3	9:00-9:50 8:20-10:10PM	MTu ThF M Th	SS 21 SCI 102							
E 1	5:30-8:10PM	W	SCI 102	412-4	Mental Hygiene	<i>Prereq.: 305. 4 additional sessions to be arranged. Same as Psyc 432.</i>	E 51	5:30-8:10PM	W	204
E 1	5:30-8:10PM	F	AUD 1	422-4	Educational Measurements I	<i>Prereq.: 305. 4 additional sessions to be arranged.</i>	E 51	5:30-8:10PM	W	215
				426-4	Individual Inventory	<i>Prereq.: 422 and 442. 4 additional sessions to be arranged.</i>	E 51	5:30-8:10PM	Tu	106
E 1	5:30-8:10PM	Th	AUD 3	442-4	Basic Principles of Guidance	<i>Prereq.: 305. 4 additional sessions to be arranged.</i>				
1	Arranged	Arranged	Arranged	501-2 to 6	Special Research Problems	<i>Prereq.: graduate standing and consent of instructor.</i>	51	Arranged	Arranged	Arranged
S 1	9:00-11:40AM	Saturday	ANA 8	515-4	Psychological Aspects of Education	<i>Prereq.: graduate standing.</i>				
				525-4	School Behavior Problems and their Prevention	<i>Prereq.: graduate standing and 412 or consent of instructor.</i>	S 51	9:00-11:40AM	Saturday	202A
E 1	5:30-8:10PM	Tu	EDA 6	537-4	Counseling Theory and Practice I	<i>Prereq.: graduate standing and 442 or consent of instructor.</i>				
				541-4	Occupational Information and Guidance	<i>Prereq.: graduate standing.</i>	E 51	5:30-8:10PM	M	AUD
				562A-4	Child Development in Education	<i>Prereq.: graduate standing and 412 or consent of instructor.</i>	E 51	5:30-8:10PM	F	103
				562B-4	Adolescent Development in Education	<i>Prereq.: graduate standing and 412 or consent of instructor.</i>	E 51	5:30-8:10PM	F	103

FALL

Alton Campus

FALL

East St. Louis Campus

SECTION	TIME	DAYS	ROOM	COURSE NO. & CREDIT HOURS	DESCRIPTIVE TITLE	REMARKS	SECTION	TIME	DAYS	ROOM
HEALTH EDUCATION (H ED)										
1 E 2	11:00-11:50 6:20-8:10PM	MTuWThF M Th	AUD 5 SCI 300	100-4	Healthful Living	Prereq.: none.	51 ES 52	9:00-9:50 6:20-8:10PM 9:00-10:50AM	MTuWThF W Saturday	113 205 205
1	1:00-2:50	Tu	ANA 8	B334S-4	First Aid	Prereq.: none. Offered once annually and only at Alton.	Offered at Alton. See Bus Sched. on back cover.			
HISTORY (HIST)										
1 2 3 E 4	12:00-12:50 2:00-2:50 3:00-3:50 8:20-9:45PM	M W F MTu Th MTu Th M Th	AUD 2 AUD 1 AUD 2 AUD 2	101-3	Survey of Western Civilization	Prereq.: none. Students may begin freshman history with either 101 or 102.	51 E 52	9:00-9:50 8:20-9:45PM	M W F M Th	212 203 203
1 E 2	9:00-9:50 8:20-9:45PM	M W F Tu F	AUD 5 AUD 2	102-3	Survey of Western Civilization	Prereq.: none.	51 ES 52	2:00-2:50 8:20-9:45PM 11:00-12:25PM	MTu Th W Saturday	212 204 204
1 E 2	1:00-1:50 5:55-8:10PM	MTuWThF M Th	AUD 1 AUD 1	201-5	The United States to 1865	Prereq.: sophomore standing.	51 ES 52	8:00-8:50 5:55-8:10PM 8:35-10:50AM	MTuWThF W Saturday	203 112 112
1	11:00-11:50	MTuWThF	AUD 2	202-5	The United States Since 1865	Prereq.: sophomore standing.	51	11:00-11:50	MTuWThF	203
Offered at E. St. Louis. See Bus Sched. on back cover.										
Offered at E. St. Louis. See Bus Sched. on back cover.										
1	10:00-10:50	TuW F	AUD 1	411-3	Intellectual History of the United States	Prereq.: 201.				
E 1	6:20-7:45PM	Tu F	AUD 2	420-3 425-3	The French Revolution American Colonial History	Prereq.: freshman survey.	E 51	6:20-7:45PM	M Th	203
1 1	1:00-2:50 11:00-12:25	Tu F Tu F	AUD 2 AUD 1	B428-4 B452-3	Age of Jackson Historical Research and Thesis Writing	Prereq.: 201. Offered only at Alton. Prereq.: junior or senior standing. Required of all history majors. Special arrangements for evening students. Offered once annually.	Offered at Alton. See Bus Sched. on back cover.			
1	Arranged	Arranged	Arranged	500-4	Seminar	Prereq.: graduate standing. Seminar on the history of the South.				
HUMANITIES (HUM)										
1	8:30-9:50	Tu	LL 21	301-3	Humanities I (Honors Program)	Prereq.: sophomore literature requirement. Undergraduate credit only. Entrance by invitation of Honors Program Committee.	51	1:00-2:30	W	104

INSTRUCTIONAL MATERIALS (IM)

	403-4	School Library Functions and Management	<i>Prereq.: none. 4 additional sessions to be arranged.</i>	E 51	5:30-8:10PM	Tu	113
E 1	405-4	Library Materials for Children	<i>Prereq.: none. Same as Ed Et 313.</i>				
E 1	417-4	Audio-Visual Methods in Education	<i>Prereq.: Guid 305. 4 additional sessions to be arranged.</i>	S 51	9:00-11:40AM	Saturday	103

JOURNALISM (JRNL)

	B201-3	News Writing and Editing I	<i>Prereq.: none. Offered once annually and only at Alton.</i>				Offered at Alton. See Bus Sched. on back cover.
--	--------	----------------------------	--	--	--	--	---

MANAGEMENT (MGT)

	170-4	Introduction to Business Administration	<i>Prereq.: none.</i>	E 51 E 52 E 53	9:00-9:50 8:20-10:10PM 6:20-8:10PM	MTu ThF M Th Tu F	204 225 104
--	-------	---	-----------------------	----------------------	--	-------------------------	-------------------

	271-4	Business Writing	<i>Prereq.: Eng 103.</i>	E 51	6:20-8:10PM	M Th	223
	320-5	Corporation Finance	<i>Prereq.: Acct 253 and Econ 205.</i>	E 51	5:55-8:10PM	Tu F	224
E 1	327-4	General Insurance	<i>Prereq.: Acct 253 and Econ 205.</i>	51	10:00-10:50	MTu ThF	225
	340-4	Business Organization and Management	<i>Prereq.: junior standing or consent of instructor.</i>	E 51	6:20-8:10PM	M Th	201B
E 1	361-3	Business Report Writing		51	3:00-3:50	M ThF	223
	371-4	Business Law I		51	8:00-8:50	MTuWTh	225
E 2	380-4	Production Management	<i>Prereq.: Econ 206.</i>	E 52	8:20-10:10PM	Tu F	225
	385-4	Personnel Management	<i>Prereq.: Econ 206.</i>	E 51	8:20-10:10PM	M Th	202B
	472-4	Small Business	<i>Prereq.: Econ 206.</i>				
	473-4	Business Enterprise and Public Policy	<i>Prereq.: senior standing.</i>	ES 51	8:20-10:10PM 11:00-12:50PM	W Saturday	221 221

	B481-4	Administrative Management	<i>Prereq.: 340.</i>	51	12:00-1:50	Tu F	201A
	B485-4	Problems in Personnel Management	<i>Prereq.: 385.</i>				Offered at Alton. See Bus Sched. on back cover.

E 1	595-4	Seminar in Personnel Management	<i>Prereq.: consent of instructor.</i>				
-----	-------	---------------------------------	--	--	--	--	--

FALL

Alton Campus

FALL

East St. Louis Campus

SECTION	TIME	DAYS	ROOM	COURSE NO. & CREDIT HOURS	DESCRIPTIVE TITLE	MARKETING (MKTG)	REMARKS	SECTION	TIME	DAYS	ROOM
MARKETING (MKTG)											
1	9:00-9:50	MTuWThF	SCI 208	230-5	Principles of Marketing	Prereq.: Econ 205 or consent of instructor.		51	10:00-10:50	MTuWThF	204
E 2	5:55-8:10PM	M Th	ANB 1					E 52	8:20-10:35PM	Tu F	113
1	1:00-1:50	MTu ThF	ANB 1	331-4	Retailing	Prereq.: 230.		E 51	6:20-8:10PM	Tu F	204
1	10:00-10:50	MTuWTh	ANB 1								
E 2	8:20-10:10PM	Tu F	ANB 1	334-4	Credits and Collections	Prereq.: 230.					
ES 1	8:20-10:10PM	W	ANB 1	336-3	Purchasing	Prereq.: 230.		E 51	8:20-9:45PM	M Th	104
Offered at E. St. Louis. See Bus Sched. on back cover.											
	11:00-12:50PM	Saturday	ANB 1	341-4	Transportation	Prereq.: 230.		51	9:00-9:50	MTu ThF	105
				B384-4	Advertising Media Analysis	Prereq.: 333. Offered once annually and only at East St. Louis.		51	2:00-3:50	Tu F	104
1	11:00-12:50	M Th	ANB 2	B438-4	Sales Management	Prereq.: 230 and 337, or consent of instructor. Offered once annually and only at Alton.	Offered at Alton. See Bus Sched. on back cover.				
MATHEMATICS (MATH)											
Prereq.: none.											
1	9:00-9:50	MTu ThF	ANA 4	100-0	Elementary Mathematics			51	11:00-11:50	MTu ThF	220
ES 2	8:20-10:10PM	W	ANA 4					52	1:00-1:50	MTu ThF	205
	10:00-11:50AM	Saturday	ANA 4					E 53	8:20-10:10PM	Tu F	220
1	9:00-9:50	MTuWThF	SCI 300	106-4	General Mathematics I	Prereq.: student will not receive credit for 106 if he has had 3 semesters of high school algebra or any college math.		51	1:00-1:50	MTuWThF	113
2	9:00-9:50	M W F	SCI 300					52	1:00-1:50	M W F	113
3	9:00-9:50	Tu Th	SCI 209								
3	9:00-9:50	M W F	SCI 300					53	1:00-1:50	M W F	113
E 4	9:00-9:50	Tu Th	SCI 102					54	1:00-1:50	Tu Th	202B
	8:20-10:10PM	Tu F	ANA 4								
1	8:00-8:50	MTuWThF	ANA 4	111-5	Elementary Analysis I	Prereq.: 106 or 3 semesters of high school algebra and 75 percentile on guidance test.		E 55	6:20-8:10PM	M Th	220
2	10:00-10:50	MTuWThF	ANA 4					51	8:00-8:50	MTuWThF	220
3	11:00-11:50	MTuWThF	ANA 4					52	9:00-9:50	MTuWThF	220
4	2:00-2:50	MTuWThF	SCI 209					53	12:00-12:50	MTuWThF	220
E 5	8:20-10:35PM	M Th	ANA 4					54	2:00-2:50	MTuWThF	220
E 6	5:55-8:10PM	Tu F	SCI 209					E 55	8:20-10:35PM	M Th	220
								E 56	5:55-8:10PM	Tu F	220
1	11:00-11:50	MTuWThF	SCI 209	113-5	Calculus and Analytic Geometry I	Prereq.: 112 or 1/2 year of high school trigonometry and 97% on guidance test.		E 51	5:55-8:10PM	Tu F	205
E 2	5:55-8:10PM	M Th	SCI 209								
1	2:00-2:50	MTu ThF	ANA 4	210-4	The Teaching of Elementary Mathematics	Prereq.: 106.		E 51	4:20-6:10PM	M Th	220
E 2	8:20-10:10PM	M Th	SCI 209					51	3:00-3:50	MTu ThF	205
								E 52	8:20-10:10PM	Tu F	205

1	8:00-8:50	TuWThF	SCI 209	251-4	Calculus and Analytic Geometry II	Prereq.: 113.	51	10:00-10:50	MTu	ThF	220
2	1:00-1:50	MTu ThF	SCI 209				52	3:00-3:50	MTu	ThF	220
ES 3	6:20-8:10PM	W	SCI 209								
	9:00-10:50AM	Saturday	SCI 209								
1	3:00-3:50	TuWThF	SCI 209	253-4	Calculus and Analytic Geometry IV	Prereq.: 252.					
E 1	6:20-7:35PM	Tu F	ANA 4	305-3	Differential Equations I	Prereq.: 253 or concurrent enrollment.					
1	3:00-3:50	MTu Th	ANA 4	320-3	Fundamental Concepts of Algebra I	Prereq.: 252.	51	9:00-9:50	M	W F	205
1	11:00-12:15	M Th	SCI 102	B324-3	Vector Analysis	Prereq.: 253.					
1	9:00-10:15	M Th	AUD 2	324-3	Vector Analysis	Prereq.: 253.	E 51	6:20-7:35PM	Tu F		202A
				B335-3	Concepts of Geometry I	Prereq.: 252.					
1	2:00-2:50	MTu ThF	ANA 4	410-3	Statistical Analysis I	Prereq.: 106.	51	3:00-3:50	MTu	ThF	205
E 2	8:20-10:10PM	M Th	SCI 209	452-3	Advanced Calculus	Prereq.: 253.	E 52	8:20-10:10PM	Tu F		205
1	1:00-2:15	M Th	AUD 2	B480-3	Probability and Statistics	Prereq.: 253.	E 51	8:20-9:35PM	M Th		205
				501-3	Real Variables	Prereq.: 454 and consent of instructor.	E 51	6:20-7:35PM	M Th		205

MUSIC (MUS)

1	1:00-1:50	MTuWThF	FAB 1	001-1	University Band	Prereq.: open to all University students upon audition.	51	11:00-11:50	M	W F	AUD
E 1	8:15-10:15PM	M	AUD 5	002A-1½	University Chorus	Prereq.: open to all University students upon audition.	E 51	8:15-10:15PM	Tu		212
1	11:00-11:50	M W F	FAB 1	002C-1	Collegiate Singers	Prereq.: open to all University students upon audition.	51	12:00-12:50	Tu Th		212
E 1	Arranged	Arranged	Arranged	003-1	Orchestra	Prereq.: open by audition. Credit for music majors only.					
1	9:00-9:50	Tu Th	FAC 21	010-1	Class Strings	Prereq.: none. Two quarters or proficiency required of majors. One hour to be arranged.					
1	8:00-8:50	M W F	FAB 1	030-1	Class Percussion	Prereq.: none. Fall quarter only.					
1	8:00-8:50	M W F	FAC 2	040-1	Class Piano	Prereq.: none for majors. Six quarters or proficiency required of majors. Prereq. for non-majors: Music 200 or equivalent.	51	11:00-11:50	M	W F	212
2	9:00-9:50	M W F	FAC 2			(Mus 200 and 040 may be taken concurrently) Alton: section one for 1st year music majors; section two, 2nd year music majors; section three, non-music majors.					
3	1:00-1:50	M W F	FAC 2			East St. Louis: section fifty-one, non-music majors.					
1	10:00-10:50	M W F	Arranged	060-1	Class Voice	Prereq.: none. Three quarters or proficiency required of music majors.					

FAIL

East St. Louis Campus

FALL

Alton Campus

SECTION	TIME	DAYS	ROOM	COURSE NO. & CREDIT HOURS	DESCRIPTIVE TITLE	MUSIC (MUS) (Continued)	REMARKS	SECTION	TIME	DAYS	ROOM
1	12:00-12:50	M W F	AUD 5	100-3	Music Understanding		Prereq.: none. For general University students. (Music majors should take 101, 102, 103 sequence.)	E 51	6:20-7:45PM	M Th	212
1	11:00-11:50	Tu Th	FAC 22	101-2	Introduction to Music Literature and History		Prereq.: none. Required of all freshman music majors. Fall quarter only.				
1	9:00-9:50	MTuWThF	FAC 22	105-4	Theory of Music		Prereq.: none. 1st quarter of 3-quarter sequence. Fall quarter only.				
1	11:00-11:50	M W F	FAC 21	200-3	Fundamentals of Music		Prereq.: none.				
1	10:00-10:50	MTuWThF	FAC 22	205-4	Theory of Music		Prereq.: 107. Fall quarter only.				
1	9:00-9:50	M W F	FAC 21	301-3	Music Education in the Elementary School		Prereq.: junior standing. Music majors only. Fall quarter only.				
1	3:00-3:50	M F	FAC 21	309-2	Orchestration I		Prereq.: 207. Fall quarter only.				
1	10:00-10:50	Th	FAB 27	312-2	Composition I		Prereq.: 103 and 207. One hour of class plus individual conference. Fall quarter only. One hour to be arranged.				
1	9:00-9:50	Tu Th	FAB 1	318-2	Conducting: General		Prereq.: junior standing. Fall quarter only.				
1	2:00-2:50	Tu Th	FAB 1	326-2	Analysis I		Prereq.: 207. To be taken concurrently with 330. Fall quarter only.				
1	2:00-2:50	M W F	FAC 22	330-2	Music History and Literature		Prereq.: 103. To be taken concurrently with 326. Fall quarter only.				
1	10:00-10:50	Tu	FAB 1	345-1	Madrigal Singers		Prereq.: audition.				
1	11:00-11:50	Tu	FAB 21	355-1	Chamber Music—Strings		Prereq.: audition.				
1	8:00-8:50	Tu	FAC 22	365a-1	Chamber Music—Woodwinds		Prereq.: audition.				
2	12:00-12:50	Tu	FAC 22	365b-1	Chamber Music—Woodwinds		Prereq.: audition.				
3	11:00-11:50	Tu	FAB 1	365c-1	Chamber Music—Brass		Prereq.: audition.				
4	11:00-11:50	Th	FAB 1	365d-1	Chamber Music—Brass		Prereq.: audition.				
E 1	5:00-7:30PM	W	FAC 22	411-3	Symphonic Literature		Prereq.: senior standing. Fall quarter only.				
E 1	5:00-6:40PM	Tu	FAC 22	441-2	Sixteenth Century Counterpoint		Prereq.: senior standing. Fall quarter only.				
E 1	5:00-6:40PM	M	FAC 21	451-2	The Teaching of General Classroom Music in the Junior and Senior High School		Prereq.: senior standing. Fall quarter only.				

The following courses in applied music are available for music majors and minors and for others under exceptional conditions. Consult the music adviser at Alton or East St. Louis. Each of these courses has only one section. Times to be arranged.

011-1 to 4	Private Violin	031-1 to 4	Private Percussion	471-2 to 8	Private Piano	474D-2 to 8	Private Bassoon
012-1 to 4	Private Viola	041-1 to 4	Private Piano	472-2 to 8	Private Voice	474E-2 to 8	Private Saxophone
013-1 to 4	Private Violoncello	051-1 to 4	Private French Horn	473A-2 to 8	Private Violin	475A-2 to 8	Private Trumpet
014-1 to 4	Private Double Bass	052-1 to 4	Private Trumpet	473B-2 to 8	Private Viola	475B-2 to 8	Private French Horn
021-1 to 4	Private Flute	053-1 to 4	Private Trombone	473C-2 to 8	Private Violoncello	475C-2 to 8	Private Baritone
022-1 to 4	Private Oboe	054-1 to 4	Private Tuba	473D-2 to 8	Private Double Bass	475D-2 to 8	Private Trombone
023-1 to 4	Private Clarinet	055-1 to 4	Private Baritone	474A-2 to 8	Private Flute	475E-2 to 8	Private Tuba
024-1 to 4	Private Bassoon	061-1 to 4	Private Voice	474B-2 to 8	Private Oboe	476-2 to 8	Private Organ
025-1 to 4	Private Saxophone	071-1 to 4	Private Organ	474C-2 to 8	Private Clarinet		

PHILOSOPHY (PHIL)

1	10:00-10:50	Tu Th	Practical Logic I	120-2	SS 21	51	11:00-11:50	Tu	F	112	
E 2	6:20-8:10PM	Tu			SS 21		<i>Prereq.: none. No credit for 120 until completion of 121.</i>				
1	2:00-2:50	MTu ThF	Types of Philosophy: An Introduction	200-4	SS 1	51	<i>Prereq.: none.</i>	9:00-9:50	MTuW	F	202A
			Greek and Early Christian Philosophy	B381-4		51	<i>Prereq.: junior standing or 4 hours of philosophy. Offered once annually and only at East St. Louis.</i>	2:00-3:50	M	Th	221

See also Govt 484.

PHYSICAL EDUCATION—MEN (PEM)

1	10:00-10:50	F	Orientation in Physical Education	101-1	SS 1		<i>Prereq.: majors and minors only.</i>				
1	11:00-12:50	M W	Methods and Materials of Teaching Swimming	117-1	AUD 4		<i>Prereq.: none. Required for majors and minors in PEM.</i>				
1	10:00-10:50	MTu Th	Teaching of Team Games I	151-1	GYM		<i>Prereq.: majors and minors only.</i>				
1	Arranged	MTuWThF	Varsity Basketball	171-2	GYM	51	<i>Prereq.: consent of instructor.</i>	Arranged	MTuWThF		GYM
1	2:00-2:50	Tu Th	Required Physical Education (Fencing)	251-1	GYM		<i>Prereq.: none. Fee.</i>				
2	11:00-12:50	M W	(Swimming)		Arranged	51	<i>Prereq.: non-swimmers and beginners only.</i>	9:00-9:50	W	F	GYM
3	1:00-1:50	Tu Th	(Soccer and Related Games)		GYM		<i>Prereq.: none.</i>				
4	2:00-2:50	M W	(Tennis)		GYM	52	<i>Prereq.: none.</i>	1:00-1:50	M	W	GYM
E 5	6:20-8:10PM	W	(Square Dance)		GYM		<i>Prereq.: beginners only.</i>				
6	11:00-11:50	M Th	(Folk Dance)		GYM		<i>Prereq.: none.</i>				
			(Archery)				<i>Prereq.: none.</i>				
1	9:00-10:50	W	(Golf)	254-1	Arranged	53	<i>Prereq.: none.</i>	9:00-9:50	M	W	GYM
2	9:00-10:50	F	Bowling		Arranged	54	<i>Prereq.: none. Fee. Meets University P.E. requirements.</i>	1:00-1:50	Tu	Th	GYM
1	11:00-11:50	M Th	Basic Rhythms II	262-1	GYM		<i>Prereq.: PEM 152. Majors and minors only.</i>				
1	9:00-9:50	M W F	Principles of Physical Education	341-3	SS 1		<i>Prereq.: majors and minors only.</i>				

FALL

29

East St. Louis Campus

FALL

Alton Campus

SECTION	TIME	DAYS	ROOM	COURSE NO. & CREDIT HOURS	DESCRIPTIVE TITLE	REMARKS	SECTION	TIME	DAYS	ROOM
PHYSICAL EDUCATION—MEN (PEM) (Continued)										
E 1	4:20-6:10PM	M Th	ANA 6	350-4	Methods and Materials for Teaching Physical Education in the Elementary School	<i>Prereq.: P.E. majors and El. Ed. majors.</i>	E 51	4:20-6:10PM	M Th	GYM
1	9:00-9:50	Tu Th	SS 1	365-2	Organization and Administration of Community Recreation	<i>Prereq.: majors and minors only.</i>				
1	11:00-11:50 3:00-5:30	Tu Th Tu Th	ANB 21 GYM	384-3	Football	<i>Prereq.: majors and minors only.</i>				
PHYSICAL EDUCATION—WOMEN (PEW)										
1	2:00-2:50	M WTh	GYM	101S-1 107-1	Soccer Fundamental Rhythms	<i>Prereq.: none. Prereq.: none.</i>	51	10:00-11:30	W F	GYM
E 1	6:20-8:10PM	W	GYM	208-1	American Square Dance and Mixers	<i>Prereq.: none.</i>				
1	10:00-10:50	Tu ThF	GYM	214-1	Archery	<i>Prereq.: none.</i>	51	9:00-9:50	M W	GYM
1	3:00-3:50	MTu Th	GYM	223-1	Tennis	<i>Prereq.: none. Meets until November 26.</i>	51	10:00-11:30	M W	GYM
1	11:00-11:50	M Th	GYM	230-1	Field Hockey	<i>Prereq.: none. Meets until November 26.</i>				
1	9:00-10:50	F	Arranged	254-1	Folk Dance	<i>Prereq.: none.</i>				
1	2:00-2:50	Tu Th	GYM	255-1	Bowling	<i>Prereq.: none. Fee.</i>	51	9:00-9:50	W F	GYM
1	8:00-8:50	Tu ThF	ANB 22	322-2	Fencing	<i>Prereq.: none. Fee.</i>				
1	9:00-9:50	Tu	ANB 22		Techniques of Teaching Individual Sports I	<i>Prereq.: PEW majors and minors only.</i>				
E 1	3:00-3:50	MTu	SCI 102	323-1	Officiating Techniques I	<i>Prereq.: none.</i>				
	4:20-6:10PM	M Th	ANA 6	350-4	Methods and Materials for Teaching Physical Education	<i>Prereq.: PEW majors and El. Ed. Majors.</i>	E 51	4:20-6:10PM	M Th	GYM
1	9:00-9:50	M W F	SS 1	354-2	Activities in the Elementary School	<i>Prereq.: PEW majors and El. Ed. Majors.</i>				
PHYSICS (PHYS)										
1	10:00-10:50	MTuWTh	SCI 103	101-4	Principles of Physical Education	<i>Prereq.: PEW majors and El. Ed. Majors.</i>				
2	10:00-10:50	F	SCI 107		Survey of Physics	<i>Prereq.: Math 106 or equivalent.</i>	51	9:00-9:50	MTuWThF	124A
	11:00-11:50	F	SCI 107				E 52	6:00-8:10PM	Tu F	124A
1	9:00-9:50	M W F	SCI 102	211-5	University Physics	<i>Prereq.: Math 113 or concurrent enrollment.</i>	51	2:00-2:50	MTu ThF	124A
	9:00-10:50	Th	SCI 107					2:00-3:50	W	124A

Alton Campus

FALL

East St. Louis Campus

SECTION	TIME	DAYS	ROOM	COURSE NO. & CREDIT HOURS	DESCRIPTIVE TITLE	REMARKS	SECTION	TIME	DAYS	ROOM
SECRETARIAL SCIENCE (SEC SCI) (Continued)										
1	11:00-11:50	MTuWTh	ANA 3	105-4	Shorthand I	Prereq.: none.	51	10:00-10:50	MTu	ThF
E 2	6:20-8:10PM	Tu F	ANA 3	107-4	Shorthand III	Prereq.: 106 or equivalent.	E 52	8:20-10:10PM	M	Th
							E 51	6:20-8:10PM	Tu	F
E 1	8:20-10:10PM	M Th	ANA 3	213-3	Typewriting IV	Prereq.: 104 or equivalent.	E 51	8:20-10:10PM	Tu	F
1	12:00-12:50	MTuWTh	ANA 3	216-4	Shorthand IV	Prereq.: 107 or equivalent.				
E 2	6:20-8:10PM	M Th	ANA 3		Calculating Machines	Prereq.: none.				
1	10:00-10:50	MTuW F	ANA 3	313-4	Teaching Typewriting	Prereq.: 213 or equivalent.				
E 1	8:20-9:45PM	M Th	ANA 1	403-3						
SOCIOLOGY (SOC)										
TV Lec	12:00-12:45	Tu ThF	SCI 208	101-5	Introductory Sociology KETC Channel 9 TV Lecture or KETC Channel 9 TV Lecture Discussion Discussion Discussion	Prereq.: none. Choose one lecture section and one discussion section.	TV Lec	12:00-12:45	Tu	ThF
E TV Lec	6:45-7:30PM	M WTh	SCI 208				E TV Lec	6:45-7:30PM	M WTh	103
1	11:00-11:50	W	AUD 1				51	12:00-12:50	M	106
2	12:00-12:50	M	AUD 1				52	12:00-12:50	M	112
3	12:00-12:50	W	AUD 1				53	12:00-12:50	W	106
S 4	11:00-11:50AM	Saturday	AUD 2				E 54	7:20-8:10PM	Tu	112
1	11:00-11:50	MTuWThF	SS 1	102-5	Social Problems	Prereq.: none.	51	1:00-1:50	MTuWThF	225
1	8:00-8:50	MTuW F	SS 1	306-4	Social Control	Prereq.: 101 or consent of instructor.				
Offered at E. St. Louis. See Bus Sched. on back cover.										
				B312-5	Sociological Research	Prereq.: 101 or consent of instructor. Plus laboratory work to be arranged.	51	2:00-3:50	M Th	112
				320-4	Race and Minority Group Relations	Prereq.: 101 or consent of instructor.	51	9:00-9:50	MTuWTh	203
				322-3	Propaganda and Public Opinion	Prereq.: 101 or consent of instructor.	51	10:00-10:50	M WTh	203
E 1	8:20-10:10PM	M Th	SS 1	335-4	Urban Sociology	Prereq.: 101 or consent of instructor.				
				340-4	The Family	Prereq.: 101 or consent of instructor.	E 51	8:20-10:10PM	M Th	221
E 1	8:20-10:10PM	Tu F	SS 1	372-4	Criminology	Prereq.: 101 or consent of instructor.	51	8:00-8:50	MTuWTh	221
Offered at E. St. Louis. See Bus Sched. on back cover.										
				B380-4	Introduction to Social Work	Prereq.: 101 or consent of instructor.				
				B383-4	Introduction to Interviewing	Prereq.: 101 or consent of instructor.	51	12:00-1:50	M Th	224
1	1:00-2:50	Tu F	ANB 22	383-4	Introduction to Interviewing	Prereq.: 101 or Psychology 201.	Offered at Alton. See Bus Sched. on back cover.			
						Prereq.: 101 or Psychology 201.	E 51	8:20-10:10PM	Tu F	224
SPEECH (SPCH)										
TV Lec	12:00-12:30	M W	SCI 208	101-4	Principles of Speech	Prereq.: none. Lecture demonstration may	TV Lec	12:00-12:30	M W	103

E TV Lec	7:30-8:00PM	Tu	Th	SCI 208	KETC Channel 9, TV Lecture	be viewed in Room S 208 (Alton) or Room 103 (East St. Louis) or on home receivers, KETC, Channel 9, St. Louis. Required for speech majors, elementary and secondary education majors. Also required for associate degree in business.	E TV Lec	7:30-8:00PM	Tu	Th	103
1	9:00-9:50	W	F	ANB 2	Discussion		51	10:00-10:50	W	F	106
2	10:00-10:50	W	F	ANB 21	Discussion		52	11:00-11:50	W	F	106
3	1:00-1:50	W	F	ANB 2	Discussion		53	1:00-1:50	W	F	106
4	2:00-2:50	W	F	ANB 2	Discussion		E 54	6:00-7:50PM	W		106
E 5	6:00-7:50PM	M									
1	11:00-11:50	MTu	ThF	ANA 1	Public Speaking	Prereq.: 101 or consent of instructor. Required for speech majors.					
102-4											
Principles of Discussion	B202-3					Prereq.: 101 or consent of instructor.	51	10:00-11:25	M	Th	202A
Principles of Argumentation and Debate	B205-3			ANB 22		Prereq.: 101 or consent of instructor.					
Forensic Activities	B209-1			ANB 2		Prereq.: none.					
Persuasion	301-4			ANB 2		Prereq.: Psychology 201 and 12 hours of speech or consent of instructor.					
Teaching Speech in Secondary Schools	B306-4			ANB 21		Prereq.: junior standing or consent of instructor.					
Readings in Speech	399-1 to 4			Arranged		Prereq.: junior standing and consent of instructor.	51	Arranged	Arranged	Arranged	
THEATER (THEA)											
Introduction to Theater	106-4					Prereq.: 101.	51	8:00-8:50	MTu	ThF	AUD
Staging Techniques	B111-3					Prereq.: none.	51	2:00-3:25	M	Th	AUD
Dramatic Activities	B208-1					Prereq.: none. Credit earned by participation in public performance.	51	12:00-1:50	MTu	ThF	AUD
Dramatic Activities	B308-1					Prereq.: none. Credit earned by participation in public performance.	51	12:00-1:50	MTu	ThF	AUD
Stage Design	312-4					Prereq.: 106 or consent of instructor.	51	9:00-9:50	MTu	ThF	AUD
ZOOLOGY (ZOOI)											
Principles of Animal Biology	100-5			SCI 301		Prereq.: none.	51	2:00-2:50	M	W	F
		M	W	Th				12:00-1:50	M	W	
		M	W	F	SCI 301		52	2:00-2:50	M	W	F
		10:00-11:50	Tu	Th	SCI 205			3:00-4:50	Tu	Th	116
		2:00-2:50	M	W	F		E 53	6:00-7:15PM	Tu	F	116
		12:00-1:50	Tu	Th	SCI 205			7:25-9:15PM	Tu	F	116

Alton Campus

FALL

East St. Louis Campus

SECTION	TIME	DAYS	ROOM	COURSE NO. & CREDIT HOURS	DESCRIPTIVE TITLE	REMARKS	SECTION	TIME	DAYS	ROOM
ZOOLOGY (ZOO) (Continued)										
4	2:00-2:50	M W F	SCI 208							
E 5	2:00-3:50	Tu Th	SCI 205							
	6:00-7:15pm	M Th	SCI 301							
	7:25-9:15pm	M Th	SCI 205							
1	10:00-10:50	Tu Th	SCI 301	202-5	Comparative Anatomy	Preq.: Zool 103.				
	10:00-11:50	M W F	SCI 205							
1	:00-9:50	Tu Th	SCI 203	321-5	Histological Technique in Zoology	Preq.: one year of biology.				
1	9:00-10:50	M W F	SCI 203							
1	4:00-4:50	M	SCI 208	362A-1½	Zoology Seminar for Seniors	Preq.: one year of biology. Required each quarter of seniors majoring in zoology.				
1	3:00-3:50	Tu Th	SCI 103	401-5	Genetics	Preq.: 12 hours of biology.				
	2:00-3:50	M W F	SCI 203							
1	2:00-2:50	Tu Th	SCI 203	461-4	Mammalogy	Preq.: Zool 103.				
	2:00-3:50	M W	SCI 205							

Schedule of Classes

Winter Quarter

1962

The following material may be of value in interpreting the information appearing in the class schedule.

- B Course offered only at one campus but scheduled so that students from the other campus may attend by using free bus transportation. See bus schedule on back cover.
- E Evening class.
- ES Evening and Saturday class.
- S Saturday class.

Alton Campus

WINTER

East St. Louis Campus

SECTION	TIME	DAYS	ROOM	COURSE NO. & CREDIT HOURS	DESCRIPTIVE TITLE	REMARKS	SECTION	TIME	DAYS	ROOM
ACCOUNTING (ACCT)										
1	2:00-2:50	MTu ThF	ANA 1	251-4	Elementary Accounting I	<i>Prereq.: sophomore standing.</i>	E 51	6:20-8:10PM	M	Th
E 2	8:20-10:10PM	Tu F	ANA 1							221
1	8:00-8:50	MTu ThF	ANA 1	252-4	Elementary Accounting II	<i>Prereq.: 251.</i>	51	10:00-10:50	MTu	ThF
2	10:00-10:50	MTu ThF	ANA 1				E 52	8:20-10:10PM	M	Th
E 3	6:20-8:10PM	M Th	ANA 1				E 53	6:20-8:10PM	Tu F	221
E 4	6:20-8:10PM	Tu F	ANA 1							221
1	12:00-12:50	MTuWThF	ANA 1	331-5	Tax Accounting	<i>Prereq.: 253.</i>	E 51	5:55-8:10PM	Tu	F
E 1	6:20-7:45PM	Tu F	ANA 2	341-3	Cost Accounting	<i>Prereq.: 253.</i>	51	12:00-1:25	Tu	F
Offered at E. St. Louis. See Bus Sched. on back cover.							51	2:00-2:50	MTu	ThF
1	9:00-9:50	MTuWTh	ANA 1	B341-3	Cost Accounting	<i>Prereq.: 253.</i>	E 52	8:20-10:10PM	M	Th
E 2	8:20-10:10PM	M Th	ANA 1	352-4	Advanced Accounting II	<i>Prereq.: 351.</i>	E 51	6:20-8:10PM	M	Th
				356-5	Auditing	<i>Prereq.: 353 or consent of instructor.</i>				224
E 1	6:20-8:10PM	M Th	ANA 2	432-4	Problems in Federal Taxation	<i>Prereq.: 331.</i>	Offered at Alton. See Bus Sched. on back cover.			
1	11:00-12:50	M Th	ANA 2	B442-4	Advanced Cost Accounting	<i>Prereq.: 341.</i>	51	Arranged	Arranged	Arranged
1	Arranged	Arranged	Arranged	459-4	Internship in Accounting	<i>Prereq.: outstanding record in accounting and recommendation of the committee on internship.</i>				
ANTHROPOLOGY (ANTH)										
E 1	6:20-8:10PM	M Th	SS 1	300-4	Man's Place in Nature	<i>Prereq.: none.</i>	Offered at Alton. See Bus Sched. on back cover.			
1	11:00-12:50	Tu F	SS 21	B310-4	Man and Culture	<i>Prereq.: none.</i>				
1	8:00-8:50	MTuWTh	SS 1	314-4	Indians of North America	<i>Prereq.: none.</i>				
APPLIED SCIENCE (AP SCI)										
1	12:00-1:50	MTu F	ANA 7	205-3	Engineering Drawing II	<i>Prereq.: 101.</i>	51	2:00-4:50	M	Th
2	3:00-4:50	MTu F	ANA 7				E 52	6:20-9:10PM	M	Th
E 3	6:20-9:10PM	Tu F	ANA 7							215
E 1	6:20-7:45PM	Tu F	ANB 22	261-3	Analytical Mechanics (Dynamics I)	<i>Prereq.: 260.</i>	E 51	8:20-9:45PM	M	Th
										202A
ART (ART)										
1	2:00-3:50	MTu ThF	FAA 2	100-5	Basic Studio	<i>Prereq.: none. 15 hours 100 to all studio courses other than 300.</i>	51	10:00-11:50	MTu	ThF
E 2	2:00-2:50	W							W	214
	6:20-9:50PM	M Th	FAA 2					10:00-10:50		214

1	9:00-9:50	M	ThF	FAA 4	120-3	Art Appreciation	<i>Prereq.: none. Satisfies general University requirement.</i>	51	9:00-9:50	M	W	F	215
2	11:00-11:50	M	ThF	FAA 4				52	2:00-2:50	M	W	F	221
E 3	6:20-7:45PM	Tu	F	FAA 4				E 53	6:20-7:45PM	M	Th		104
1	2:00-3:50	MTu	ThF	FAA 3	203-4	Beginning Ceramics	<i>Prereq.: 15 hours of 100.</i>						
1	11:00-12:50	MTuWTh		FAA 21	245-4	Figure	<i>Prereq.: 15 hours of 100.</i>						
1	2:00-3:50	MTu	ThF	Alby St. Stu.	250-4	Oil Painting	<i>Prereq.: 12 hours of 245 or consent of instructor.</i>						
1	9:00-10:50	M	W	F	300-4	Art Education	<i>For elementary education majors and art education majors. Student may elect up to 12 hours. (At East St. Louis, students who have previously earned 4 hours credit in this course, and desire additional credit, should enroll in the winter quarter only.)</i>	51	1:00-2:50	M	W	F	214
E 1	6:20-9:00PM	Tu	F	FAA 3	302-4	Beginning and Advanced Ceramics	<i>Prereq.: 12 hours of 250 or consent of instructor.</i>						
1	2:00-3:50	MTu	ThF	Alby St. Stu.	320-4	Advanced Painting	<i>Prereq.: consent of instructor.</i>						
1	Arranged	Arranged	Arranged		325-4	Studio	<i>Prereq.: 326 or consent of instructor.</i>	51	Arranged	Arranged	Arranged	Arranged	
E 1	6:20-8:10PM	M	Th	FAA 4	327-4	History of World Art, II	<i>Prereq.: 245 and 250 or consent of instructor.</i>						
1	9:00-10:50	MTu	ThF	Alby St. Stu.	358-4	Prints	<i>Prereq.: art majors and minors. Required for majors in art education. Offered winter quarters only.</i>						
1	12:00-1:50	M	W	F	365-4	Art Education in the Secondary Schools							
1	Arranged	Arranged	Arranged		401-4	Research in Painting	<i>Prereq.: consent of instructor.</i>						
1	Arranged	Arranged	Arranged		410-4	Research in Prints	<i>Prereq.: consent of instructor.</i>						
BOTANY (BOT)													
E 1	6:00-7:15PM	Tu	F	SCI 203	101-5	General Botany	<i>Prereq.: none.</i>	E 51	6:00-7:15PM	M	Th		116
	7:25-9:15PM	Tu	F	SCI 205					7:30-9:15PM	M	Th		116
1	11:00-11:50	M	W	F	202-5	General Botany	<i>Prereq.: none.</i>	51	2:00-2:50	M	W	F	112
	10:00-11:50	Tu	Th	SCI 203					3:00-4:50	M	W		116
2	11:00-11:50	M	W	F				52	2:00-2:50	M	W	F	112
	12:00-1:50	W	F	SCI 205					2:00-3:50	Tu	Th		116
CHEMISTRY (CHEM)													
1	10:00-10:50	MTu	Th	SCI 300	101-4	General Chemistry	<i>Prereq.: none.</i>	51	2:00-2:50	M	W	F	204
	8:00-10:50	W		SCI 306					10:00-11:50	Tu	Th		125
2	10:00-10:50	MTu	Th	SCI 300				52	2:00-2:50	M	W	F	204
	8:00-10:50	F		SCI 306					3:00-4:50	M	W		125
E 3	6:00-7:15PM	M	Th	SCI 300									
	7:25-10:15PM	M		SCI 306									
E 4	6:00-7:15PM	M	Th	SCI 300									
	7:25-10:15PM	Th		SCI 306									

WINTER

SECTION	TIME	DAYS	COURSE NO. & CREDIT HOURS	ROOM	DESCRIPTIVE TITLE	REMARKS	SECTION	TIME	DAYS	ROOM
CHEMISTRY (CHEM) (Continued)										
1	12:00-12:50 12:00-12:50 12:00-2:50	M W F Th Tu	SCI 300 SCI 300 SCI 306		111-5 Chemical Principles and Inorganic Chemistry	<i>Prereq.: none.</i>	E 51	8:20-9:50PM 6:10-8:00PM	M Th M Th	105 125
1	8:00-8:50 8:00-8:50 8:00-10:50	M W F Th Tu	SCI 300 SCI 301 SCI 306		112-5 Chemical Principles and Inorganic Chemistry	<i>Prereq.: 111.</i>	51	8:00-8:50 10:00-11:50	MTu ThF M W	204 125
2	8:00-8:50 8:00-8:50 8:00-10:50	M W F Th Tu	SCI 300 SCI 301 SCI 306				52	8:00-8:50 2:00-3:50	MTu ThF M W	204 125
3	8:00-8:50 12:00-12:50 12:00-2:50	M W F M W	SCI 300 SCI 301 SCI 306				53	8:00-8:50 2:00-3:50	MTu ThF Tu Th	204 125
							54	12:00-12:50 10:00-11:50	MTu ThF M W	113 125
							55	12:00-12:50 2:00-3:50	MTu ThF M W	113 125
							56	12:00-12:50 2:00-3:50	MTu ThF Tu Th	113 125
1	3:00-3:50 1:00-3:50 6:00-7:15PM 7:25-10:15PM	M F Th Tu F Tu F	SCI 301 SCI 307 SCI 300 SCI 307		331-3 Introductory Quantitative Analysis 342-5 Organic Chemistry	<i>Prereq.: 221.</i> <i>Prereq.: 341.</i>	E 51 51	6:00-7:00PM Lab. to be arranged. 10:00-10:50 1:00-3:50	M Th M W F M W M W	202B 205 123 123
E 1	7:00-7:50PM	W	SCI 301		375-0 to 1 Senior Seminar	<i>Prereq.: senior with major in chemistry.</i>	51	1:00-3:50 Arranged	Tu Th Arranged	123 Arranged
E 1	6:00-6:50PM 7:00-9:50PM 11:00-11:50 1:00-3:50 1:00-2:50	M Th M Th M W F Th M	SCI 303 SCI 303 SCI 301 SCI 303 SCI 301		432-4 Instrumental Analytical Techniques 462-4 Physical Chemistry B490-2 Chemical Literature	<i>Prereq.: 331 and 461.</i> <i>Prereq.: 461.</i> <i>Prereq.: 331 and 343 and reading knowledge of German, or consent of instructor.</i>	E 51	6:00-7:30PM	M Th	202A
ECONOMICS (ECON)										
1	10:00-10:50 5:55-8:10PM 8:20-10:10PM	MTuWThF M Th M Th	SCI 208 ANA 6 ANA 2		205-5 Survey of Economic Principles 206-4 Economic Principles and Problems	<i>Prereq.: sophomore standing.</i> <i>Prereq.: 205.</i>	51 E 52 51	1:00-1:50 5:55-8:10PM 8:00-8:50	MTuWThF M Th MTuW F	113 105 221

Offered at Alton. See Bus Sched. on back cover.

1	9:00-9:50	MTuWThF	ANA 6	307-4	Economic and Business Statistics	Prereq.: 205. Math 106 recommended.	51	9:00-9:50	MTuWThF	112
E 1	8:20-10:10PM	Tu F	ANA 6	310-4	Labor Problems	Prereq.: 206, or 205 and consent of instructor.	51	1:00-1:50	M WThF	103
1	12:00-12:50	MTu ThF	ANA 6	315-4	Money and Banking I	Prereq.: 205.	E 51	6:20-8:10PM	Tu F	104
1	10:00-10:50	MTu ThF	ANA 6	328-4	International Economics I	Prereq.: 206, or 205 and consent of instructor.				
1	1:00-2:50	M Th	ANA 6	B416-4	Money and Banking II	Prereq.: 315 or consent of instructor.				
Offered at E. St. Louis. See Bus Sched. on back cover.				B432-3	Fiscal Policy of the United States	Prereq.: 206, or 205 and consent of instructor.	51	2:00-3:25	Tu F	202B
1	11:00-12:25	M Th	ANB 22	B440-3	Intermediate Theory	Prereq.: 206, or 205 and consent of instructor.				
Offered at E. St. Louis. See Bus Sched. on back cover.				B450-3	History of Economic Thought	Prereq.: 206, or 205 and consent of instructor.	51	10:00-11:25	Tu F	202B
				470-3	Business Cycles	Prereq.: 315 or consent of instructor.	E 51	5:30-8:10PM	W	201A
EDUCATIONAL ADMINISTRATION (ED AD)										
1	11:00-12:25	Tu F	ANA 2	331-3	The American Educational Systems	Prereq.: none.	E 51	5:30-8:10PM	Th	204
Offered at E. St. Louis. See Bus Sched. on back cover.				B331-3	The American Educational Systems	Prereq.: none.	52	10:00-11:25	M Th	112
1	1:00-2:50	Tu F	ANA 6	B355-4	Philosophy of Education	Prereq.: none.				
E 2	4:20-6:10PM	Tu F	ANB 1	355-4	Philosophy of Education	Prereq.: none.	E 51	8:20-10:10PM	Tu F	105
				424-4	School Administration	Prereq.: none. 4 additional sessions to be arranged.	S 51	9:00-11:40AM	Saturday	224
E 1	5:30-8:10PM	W	ANB 1	500-4	Research Methods	Prereq.: graduate standing. Guid 422 recommended.				
				534-4	School Finance	Prereq.: graduate standing and 424, or consent of instructor.	E 51	5:30-8:10PM	Tu	202A
E 1	5:30-8:10PM	M	AUD 4	554-4	Contrasting Philosophies of Education	Prereq.: graduate standing.	E 51	5:30-8:10PM	M	204
				563-4	Workshop in School Public Relations	Prereq.: graduate standing.				
1	Arranged	Arranged	Arranged	575-2 to 4	Individual Research	Prereq.: graduate standing and consent of instructor.	51	Arranged	Arranged	Arranged
EDUCATION ELEMENTARY (ED EL)										
Offered at E. St. Louis. See Bus Sched. on back cover.				313-4	Children's Literature	Prereq.: none. Same as IM 405.	E 51	4:20-6:10PM	M Th	221
E 1	6:20-8:10PM	M Th	SCI 301	B314-4	Elementary School Methods	Prereq.: Guid 305.	51	12:00-1:50	M Th	105
1	1:00-2:50	Tu F	SCI 102	B337-4	Elementary School Methods	Prereq.: Guid 305.				
					Reading in the Elementary Schools	Prereq.: 314 or 316, and Guid 305.				
						Offered at Alton. See Bus Sched. on back cover.				

Alton Campus

WINTER

East St. Louis Campus

SECTION	TIME	DAYS	ROOM	COURSE NO. & CREDIT HOURS	DESCRIPTIVE TITLE	REMARKS	SECTION	TIME	DAYS	ROOM
EDUCATION ELEMENTARY (ED EL) (Continued)										
				337-4	Reading in the Elementary Schools	<i>Prereq.: 314 or 316, and Guid 305.</i>	E 51	4:20-6:10PM	Tu F	105
1	Arranged	Arranged	Arranged	350D-8 to 12	Kindergarten-Primary Student Teaching	<i>Prereq.: must apply to education division two quarters in advance.</i>	51	Arranged	Arranged	Arranged
1	Arranged	Arranged	Arranged	350E-4 to 8	Advanced Kindergarten-Primary Student Teaching	<i>Prereq.: 350D.</i>	51	Arranged	Arranged	Arranged
1	Arranged	Arranged	Arranged	351D-8 to 12	Elementary Student Teaching	<i>Prereq.: must apply to education division two quarters in advance.</i>	51	Arranged	Arranged	Arranged
1	Arranged	Arranged	Arranged	351E-4 to 8	Advanced Elementary Student Teaching	<i>Prereq.: 351D.</i>	51	Arranged	Arranged	Arranged
E 1	5:30-8:10PM	Th	SCI 102	415-4	Improvement of Instruction in Arithmetic in Elementary School	<i>Prereq.: Math 210 or consent of instructor. 4 additional sessions to be arranged.</i>				
				437-4	Problems in Reading	<i>Prereq.: 337. 4 additional sessions to be arranged.</i>	S 51	9:00-11:40AM	Saturday	201A
E 1	5:30-8:10PM	Tu	ANA 8	442-4	Materials and Methods in Elementary School Science	<i>Prereq.: none. 3 additional sessions to be arranged.</i>				
E 1	5:30-8:10PM	W	ANA 2	461-4	The Elementary School Curriculum	<i>Prereq.: none. 4 additional sessions to be arranged. Not open to students who have had Ed Ad 460.</i>				
S 1	9:00-11:40AM	Saturday	ANB 1	505-4	Improvement of Reading Instruction	<i>Prereq.: graduate standing. Not for students who have had 337 or 437.</i>				
1	Arranged	Arranged	Arranged	507-2 to 4	Readings in Reading	<i>Prereq.: graduate standing. Consent of instructor.</i>	51	Arranged	Arranged	Arranged
				541-4	Selected Teaching and Curriculum Problems in Elementary School Science	<i>Prereq.: graduate standing. Credit for 442 or 541, not both.</i>	E 51	5:30-8:10PM	Th	212
				543-4	Teaching the Social Studies in the Elementary School	<i>Prereq.: graduate standing.</i>	E 51	5:30-8:10PM	W	224
1	Arranged	Arranged	Arranged	575-2 to 4	Individual Research	<i>Prereq.: graduate standing and consent of instructor.</i>	51	Arranged	Arranged	Arranged
EDUCATION INDUSTRIAL (ED I)										
				494-3	Organization and Administration of Industrial Education	<i>Prereq.: none.</i>	E 51	5:30-8:10PM	W	202A

EDUCATION SECONDARY (ED SEC)

ES 1	6:20-8:10PM 9:00-10:50AM Arranged	W Saturday Arranged	ANB 21 ANB 21 Arranged	315-4 352D-8 to 12 352E-4 to 8	High School Methods Secondary Student Teaching Secondary Student Teaching	Prereq.: Guid 305. Prereq.: must apply to education division two quarters in advance. Prereq.: 352D. Must apply to education division two quarters in advance.	E 51 51 51	4:20-6:10PM Arranged Arranged	M Arranged Arranged	Th Arranged Arranged	220 Arranged Arranged
				470-4 488-4	Extra-Class Activities Teaching the Social Studies in the Secondary School	Prereq.: none. 4 additional sessions to be arranged. Prereq.: 315 or consent of instructor. 4 additional sessions to be arranged.	S 51 E 51	9:00-11:40AM 5:30-8:10PM	Saturday W		221 221
S 1	9:00-11:40AM	Saturday	ANB 1	505-4	Improvement of Reading Instruction	Prereq.: graduate standing.					
E 1	5:30-8:10PM	Tu	AUD 2	550-4	Core Curriculum in the Secondary School	Prereq.: graduate standing.					
E 1	5:30-8:10PM	M	AUD 3	564-4	High School Principalship	Prereq.: Ed Ad 424 or consent of instructor.					
1	Arranged	Arranged	Arranged	575-2 to 4	Individual Research	Prereq.: graduate standing and consent of instructor.	51	Arranged	Arranged	Arranged	Arranged

EDUCATION SPECIAL (ED SP)

			Ed EI	351D-8	Elementary Student Teaching	Prereq.: consent of instructor. Application two quarters in advance. Must be taken with Ed Sp 420.	51	Arranged	Arranged	Arranged	Arranged
E 1	5:30-8:10PM	W	SCI 102	410-4 412-4	Problems and Characteristics of the Mentally Retarded Education of Gifted Children	Prereq.: Guid 305 or Psych 301 or 303. 4 additional sessions to be arranged. Prereq.: Guid 305 or Psych 301 or 303. 4 additional sessions to be arranged.	E 51	5:30-8:10PM	M		212
E 1	5:30-8:10PM	W	SCI 102	413-4 420-4	Directed Observation of Exceptional Children Methods and Materials of Teaching Exceptional Children	Prereq.: consent of instructor. Must be taken with 410. 4 additional sessions to be arranged. Prereq.: 410. Must be taken with 351D. 4 additional sessions to be arranged.	E 51	5:30-8:10PM	Tu		204

ENGLISH (ENG)

1B 2B 3B E 4B ES 5B	8:00-8:50 9:00-9:50 1:00-1:50 8:20-10:10PM 8:20-10:10PM 11:00-12:50PM	MTu MTu MTu M W Saturday	AUD 1 AUD 4 AUD 4 AUD 4 AUD 1 AUD 1	101-3	Composition	Prereq.: none.	51B 52B 53B E 54B ES 55B	8:00-8:50 9:00-9:50 12:00-12:50 8:20-10:10PM 6:20-8:10PM 9:00-10:50AM	MTu MTu MTu M W Saturday	ThF ThF ThF Th W Saturday	211 211 211 211 211 211
---------------------------------	--	---	--	-------	-------------	----------------	--------------------------------------	--	---	--	--

WINTER

E 1	6:20-10:10PM	1U	F	AUD 4	Milton Usage in Spoken and Written English	Prereq.: sophomore literature requirement. Prereq.: sophomore literature requirement.	51	9:00-9:50	M	W	F	202A
E 1	8:20-9:45PM	M	Th	ANA 5								
Offered at E. St. Louis. See Bus Sched. on back cover.												
					Contemporary American Fiction	Prereq.: sophomore literature requirement. Offered once annually and only at East St. Louis.	51	2:00-3:50	M	Th		211
E 1	5:30-8:10PM		Th	AUD 4	Problems in the Teaching of English	Prereq.: sophomore literature requirement.						
FOREIGN LANGUAGES (FL)												
FRENCH (FR)												
1	10:00-10:50	MTu	ThF	HUM 2	Elementary French	Prereq.: 101 or one year high school French.						
E 2	6:20-8:10PM	M	Th	HUM 2								
1	11:00-12:25	Tu	F	HUM 22	Intermediate Course	Prereq.: French 151 or consent of instructor. Offered once annually and only at Alton.						
E 1	8:20-9:45PM	M	Th	HUM 22	French Contemporary Drama	Prereq.: French 153 or consent of instructor.						
Offered at Alton. See Bus Sched. on back cover.												
GERMAN (GER)												
1	12:00-12:50	MTuWTh		HUM 2	Elementary German	Prereq.: German 101 or one year of high school German.	51	9:00-9:50	MTuWTh			105
2	1:00-1:50	MTu	ThF	HUM 2			52	10:00-10:50	MTuWTh			124A
E 3	8:20-10:10PM	M	Th	HUM 2			53	2:00-2:50	MTu	ThF		202A
1	11:00-12:25	Tu	F	ANA 8	Intermediate Course	Prereq.: German 151 or consent of instructor.	51	12:00-1:25	M	Th		215

WINTER

Alton Campus

WINTER

East St. Louis Campus

SECTION	TIME	DAYS	ROOM	COURSE NO. & CREDIT HOURS	DESCRIPTIVE TITLE	REMARKS	SECTION	TIME	DAYS	ROOM
GEOGRAPHY (GEOG)										
1	8:00-8:50	MTuWTh	AUD 5	100-5	Cultural Geography	<i>Prereq.: none.</i>	51	10:00-10:50	M W F	113
	8:00-8:50	F	SS 1					8:00-8:50	Tu Th	222
2	8:00-8:50	MTuWTh	AUD 5				52	10:00-10:50	M W F	113
	8:00-8:50	F	ANA 5					9:00-9:50	Tu Th	212
3	8:00-8:50	MTuWTh	AUD 5				53	10:00-10:50	M W F	113
	9:00-9:50	F	SS 1					10:00-10:50	Tu Th	222
4	1:00-1:50	MTuW F	AUD 5				54	10:00-10:50	M W F	113
	1:00-1:50	Th	SS 1					10:00-10:50	Tu Th	212
5	1:00-1:50	MTuW F	AUD 5				E 55	5:55-8:10PM	Tu F	222
	1:00-1:50	Th	SS 21							
E 6	5:55-8:10PM	M Th	ANA 5							
1	12:00-12:50	MTuWThF	ANA 5	101-5	Physical Geography	<i>Prereq.: none. Natural science credit for education majors.</i>				
1	11:00-11:50	MTuWThF	ANA 5	211-5	Economic Geography	<i>Prereq.: none. Required for business majors.</i>	51	9:00-9:50	MTuWThF	222
				311-4	Geography of Soils	<i>Prereq.: none. Natural science credit for education majors.</i>	51	12:00-12:50	MTuWTh	222
1	9:00-10:50	Tu F	ANA 5	B312-4	Regional Climatology	<i>Prereq.: none. Natural science credit for education majors. Offered once annually.</i>	Offered at Alton. See Bus Sched. on back cover.			
1	11:00-11:50	TuW F	SS 1	313-3	Geography of Illinois	<i>Prereq.: none. Natural science credit for education majors.</i>	51	1:00-1:50	M WTh	222
				314-4	Geography of Anglo-America	<i>Prereq.: none. Natural science credit for education majors.</i>	51	11:00-11:50	MTuWTh	222
				324-4	Restoration and Conservation of Natural Resources	<i>Prereq.: none. Natural science credit for education majors.</i>	ES 51	6:20-8:10PM	W	222
								9:00-10:50AM	Saturday	222
ES 1	6:20-8:10PM	W	ANA 5	402-4	The Soviet Union	<i>Prereq.: 101 or consent of instructor. Natural science credit for education majors.</i>				
1	9:00-10:50AM	Saturday	ANA 5	405-4	Advanced Economic Geography II (Industrial)	<i>Prereq.: 211 or consent of instructor.</i>				
	Arranged	Arranged	Arranged	413-4	Geography of the Caribbean Lands	<i>Prereq.: 100. Natural science credit for education majors.</i>	ES 51	8:20-10:10PM	W	222
				B416-4	Cartography	<i>Prereq.: 212 or consent of instructor. Natural science credit for education majors. Offered once annually and only at East St. Louis.</i>	51	11:00-12:50PM	Saturday	222
								2:00-3:50	M Th	222
GOVERNMENT (GOV)										
1	9:00-9:50	MTuWThF	ANA 4	190-5	American Government	<i>Prereq.: none.</i>	51	1:00-1:50	MTuWThF	212

Offered at E. St. Louis. See Bus Sched. on back cover.

		E 52	5:55-8:10PM	M	Th	203
2	10:00-10:50	MTuWThF	ANA 2			
3	1:00-1:50	MTuWThF	SCI 300			
4	2:00-2:50	MTuWThF	SCI 300			
E 5	5:55-8:10PM	M	ANA 4			
E 1	8:20-10:10PM	M	SS 1			
Offered at E. St. Louis. See Bus Sched. on back cover.						
1	12:00-12:50	MTuWThF	ANB 21			
Offered at E. St. Louis. See Bus Sched. on back cover.						
1	1:00-2:50	Tu	F			
Offered at Allom. See Bus Sched. on back cover.						

Alton Campus

WINTER

East St. Louis Campus

SECTION	TIME	DAYS	ROOM	COURSE NO. & CREDIT HOURS	DESCRIPTIVE TITLE	REMARKS	SECTION	TIME	DAYS	ROOM
HEALTH EDUCATION (H ED)										
1 E 2	9:00-9:50 4:20-6:10PM	MTuWThF M Th	AUD 5 AUD 5	100-4	Healthful Living	Prereq.: none.	51 E 52	8:00-8:50 6:20-8:10PM	MTuWThF Tu F	113 113
1	11:00-12:50	Tu F	AUD 4	B205-4	Introduction to Health Education	Prereq.: 100.	Offered at Alton. See Bus Sched. on back cover.			
1	1:00-2:50	Tu F	SS 1	B313S-4	Introduction to Safety Education	Prereq.: none. Offered once annually and only at Alton.	Offered at Alton. See Bus Sched. on back cover.			
HISTORY (HIST)										
ES 1	8:20-9:45PM 11:00-12:25PM	W Saturday	AUD 2 AUD 2	101-3	Survey of Western Civilization	Prereq.: none. Students may begin freshman history with either 101 or 102.	E 51	8:20-9:45PM	Tu F	203
1 2 3 E 4	12:00-12:50 2:00-2:50 3:00-3:50 8:20-9:45PM	MTu Th MTu Th MTu Th Tu F	AUD 2 AUD 2 AUD 2 AUD 2	102-3	Survey of Western Civilization	Prereq.: none.	51 E 52	2:00-2:50 8:20-9:45PM	M WTh M Th	212 203
1	11:00-11:50	M W F	AUD 5	103-3	Survey of Western Civilization	Prereq.: 102.	51	9:00-9:50	M W F	212
1 E 2	9:00-9:50 5:55-8:10PM	MTuWThF Tu F	AUD 1 AUD 1	201-5	The United States to 1865	Prereq.: sophomore standing.				
1	1:00-1:50	MTuWThF	AUD 2	202-5	The United States Since 1865	Prereq.: sophomore standing.	51 E 52	11:00-11:50 5:55-8:10PM	MTuWThF Tu F	203 203
1 Offered at E. St. Louis. See Bus Sched. on back cover.	1:00-2:25	Tu F	AUD 1	B306-3 B323-4 330-3	History of Rome English History: 1603-1815 The Revolution and the Constitution	Prereq.: freshman survey. Prereq.: freshman survey. Prereq.: 201.	Offered at Alton. See Bus Sched. on back cover.			
1	9:00-10:25	Tu F	AUD 2	B372-3	Russian History to 1905	Prereq.: freshman survey. Offered only at Alton.	Offered at Alton. See Bus Sched. on back cover.			
1 Offered at E. St. Louis. See Bus Sched. on back cover.	11:00-11:50	TuW F	AUD 1	401-3 B412-3	The Old South Intellectual History of the United States	Prereq.: 201. Prereq.: 201. Continuation of 411. Offered every other year.	51	10:00-11:25	M Th	215
				415-3	The Age of the Renaissance	Prereq.: freshman survey.	E 51	5:30-8:10PM	W	203
HUMANITIES (HUM)										
1	8:30-9:50	Tu	LL 21	302-3	Humanities II (Honors Program)	Prereq.: sophomore literature requirement. Undergraduate credit only. Entrance by invitation of Honors Program Committee.	51	1:00-2:30	W	104

INSTRUCTIONAL MATERIALS (I M)

E1	5:30-8:10PM	M	SCI 102	405-4	Library Materials for Children	Prereq.: none. Same as Ed E1 313.	E 51	4:20-6:10PM	M	Th	221
				406-4	Library Materials for Adolescents	Prereq.: none. 4 additional sessions to be arranged.					
S1	9:00-11:40AM	Saturday	SCI 102	417-4	Audio-Visual Methods in Education	Prereq.: Guid 305, 4 additional sessions to be arranged.					

JOURNALISM (JRNL)

1	1:00-2:25	Tu	F	B202-3	News Writing and Editing II	Prereq.: 201. Offered once annually and only at Alton.	Offered at Alton. See Bus Sched. on back cover.
---	-----------	----	---	--------	-----------------------------	--	---

Offered at E. St. Louis. See Bus Sched. on back cover.

				B391-3	Feature Writing	Prereq.: none. Offered once annually and only at East St. Louis.	51	2:00-3:25	M	Th	103
--	--	--	--	--------	-----------------	--	----	-----------	---	----	-----

MANAGEMENT (MGT)

1	8:00-8:50	MTuW	F	170-4	Introduction to Business Administration	Prereq.: none.	51	9:00-9:50	MTu	ThF	113
E2	8:20-10:10PM	M	Th				E 52	6:20-8:10PM	M	Th	106
E3	6:20-8:10PM	Tu	F				E 53	6:20-8:10PM	Tu	F	105
ES1	6:20-8:10PM	W		271-4	Business Writing	Prereq.: Eng 103.	51	2:00-2:50	MTu	ThF	223
	9:00-10:50AM	Saturday									

E1	5:55-8:10PM	M	Th	320-5	Corporation Finance	Prereq.: Acct 253 and Econ 205.	51	3:00-3:50	MTuWThF		105
				323-4	Investments	Prereq.: 320.	ES 51	6:20-8:10PM	W		215

1	10:00-10:50	M	WThF	327-4	General Insurance	Prereq.: Acct 253 and Econ 206.					
1	9:00-9:50	M	WTh	328-3	Real Estate	Prereq.: junior standing.					

E1	6:20-8:10PM	M	Th	340-4	Business Organization and Management	Prereq.: junior standing or consent of instructor.	E 51	6:20-7:45PM	Tu	F	106
----	-------------	---	----	-------	--------------------------------------	--	------	-------------	----	---	-----

1	3:00-3:50	MTuW		361-3	Business Report Writing	Prereq.: junior standing.	51	10:00-10:50	MTu	ThF	204
1	1:00-1:50	M	WThF	371-4	Business Law I	Prereq.: junior standing.	E 51	8:20-10:10PM	M	Th	103

E2	8:20-10:10PM	Tu	F	372-4	Business Law II	Prereq.: 371.	51	8:00-8:50	MTuWTh		202B
1	8:00-8:50	M	WThF				E 52	8:20-10:10PM	M	Th	212

E2	6:20-8:10PM	Tu	F	380-4	Production Management	Prereq.: Econ 206.	51	1:00-1:50	MTu	ThF	224
				385-4	Personnel Management	Prereq.: Econ 206.	51	11:00-11:50	MTu	ThF	105

E1	8:20-10:10PM	M	Th	475-4	Budgeting and Systems	Prereq.: 320 and Acct 253.	E 51	8:20-10:10PM	Tu	F	202A
E1	6:20-8:10PM	M	Th	480-4	Seminar in Labor Law	Prereq.: 2 quarters of Business Law or Econ 310 or Govt 385.					

1	1:00-2:50	M	Th	B481-4	Administrative Management	Prereq.: 340.	Offered at Alton. See Bus Sched. on back cover.
---	-----------	---	----	--------	---------------------------	---------------	---

MARKETING (MKT)

1	9:00-9:50	MTuWThF		230-5	Principles of Marketing	Prereq.: Econ 205 or consent of instructor.	51	11:00-11:50	MTuWThF		204
E2	5:55-8:10PM	M	Th								

WINTER

[illegible]

1	3:00-3:50	MTu	ThF	ANA 4	220-4	Elementary Statistics	Prereq.: 106.	51	8:00-8:50	MTaW	F	205
1	11:00-11:50	MTu	ThF	SCI 209	251-4	Calculus and Analytic Geometry II	Prereq.: 113.	E 51	6:20-8:10PM	Tu	F	205
E 2	6:20-8:10PM	M	Th	SCI 209								
1	8:00-8:50	TaWThF		SCI 209	252-4	Calculus and Analytic Geometry III	Prereq.: 251.	51	10:00-10:50	MTu	ThF	220
2	1:00-1:50	MTu	ThF	ANA 4								
ES 3	6:20-8:10PM	W		ANA 4								
	9:00-10:50AM	Saturday		ANA 4								
E 1	6:20-7:35PM	Tu	F	SCI 209	306-3	Differential Equations II	Prereq.: 305.					
1	3:00-3:50	MTu	Th	ANA 5	321-3	Fundamental Concepts of Algebra II	Prereq.: 320.	51	9:00-9:50	M	W	104
1	9:00-10:15	M	Th	AUD 2	B336-3	Concepts of Geometry II	Prereq.: 335.	Offered at Allon. See Bus Sched. on back cover.				
1	3:00-3:50	MTu	ThF	ANA 4	410-3	Statistical Analysis I	Prereq.: 106.	51	8:00-8:50	MTaW	F	205
1	2:00-2:50	M	W	ANA 4	411-3	Statistical Analysis II	Prereq.: 220 or 410.	51	3:00-3:50	MTu	Th	104
E 2	8:20-9:45PM	M	Th	SCI 103				E 52	8:20-9:45PM	Tu	F	104
1	1:00-2:15	M	Th	ANA 5	453-3	Advanced Calculus	Prereq.: 452.	E 51	8:20-9:45PM	M	Th	205
					B481-3	Probability and Statistics	Prereq.: 480.	Offered at Allon. See Bus Sched. on back cover.				
					502-3	Real Variables	Prereq.: 501.	E 51	6:20-7:45PM	M	Th	205

MUSIC (MUS)

1	1:00-1:50	MTuWThF		FAB 1	001-1	University Band	Prereq.: open to all University students upon audition.	51	11:00-11:50	M	W	F	AUD
E 1	8:15-10:15PM	M		AUD 5	002A-1½	University Chorus	Prereq.: open to all University students upon audition.	E 51	8:15-10:15PM	Tu			212
1	11:00-11:50	M	W	F	FAB 1	002C-1	Collegiate Singers	Prereq.: open to all University students upon audition.	51	12:00-12:50	Tu	Th	212
E 1	Arranged	Arranged		Arranged	003-1	Orchestra	Prereq.: open by audition. Credit for music majors only.						
1	8:00-8:50	M	W	F	FAC 21	010-1	Class Strings	Prereq.: none. Two quarters or proficiency required of majors.					
1	10:00-10:50	Tu	Th	F	FAC 21	020A-1	Class Flute	Prereq.: none. Two quarters or proficiency required of majors.					
1	12:00-12:50	Tu	Th	F	FAC 21	020B-1	Class Oboe	Prereq.: none. Two quarters or proficiency required of majors.					
1	10:00-10:50	Tu	Th	F	FAC 21	020C-1	Class Clarinet						
1	12:00-12:50	Tu	Th	F	FAC 21	020D-1	Class Bassoon						
1	10:00-10:50	Tu	Th	F	FAC 21	020E-1	Class Saxophone						
1	12:00-12:50	Tu	Th	F	FAC 21								

WINTER

Alton Campus

WINTER

East St. Louis Campus

SECTION	TIME	DAYS	ROOM	COURSE NO. & CREDIT HOURS	DESCRIPTIVE TITLE	MUSIC (MUS) (Continued)	REMARKS	SECTION	TIME	DAYS	ROOM
1	8:00-8:50	M W F	FAC 2	040-1	Class Piano		<i>Prereq.: none for majors. Six quarters or proficiency required of majors. Prereq. for non-majors: Music 200 or equivalent. (Mus 200 and 040 may be taken concurrently.) Alton: section one for 1st year music majors; section three, 2nd year music majors; section two, non-music majors. East St. Louis: section fifty-one, non-music majors.</i>	51	11:00-11:50	M W F	212
2	1:00-1:50	M W F	FAC 2								
3	2:00-2:50	M W F	FAC 2								
1	2:00-2:50	M W F	FAB 1	050A-1	Class French Horn		<i>Prereq.: none. Two quarters or proficiency required of majors.</i>				
1	2:00-2:50	M W F	FAB 1	050B-1	Class Trumpet						
1	2:00-2:50	M W F	FAB 1	050C-1	Class Trombone						
1	2:00-2:50	M W F	FAB 1	050D-1	Class Tuba						
1	2:00-2:50	M W F	FAB 1	050E-1	Class Baritone		<i>Prereq.: none. Three quarters or proficiency required of music majors.</i>				
1	10:00-10:50	M W F	Arranged	060-1	Class Voice		<i>Prereq.: none. For general University students. (Music majors should take 101, 102, 103 sequence.)</i>	51	10:00-10:50	M W F	AUD
E1	6:20-7:45PM	M Th	FAC 22	100-3	Music Understanding		<i>Prereq.: 101. Winter quarter only.</i>				
1	11:00-11:50	Tu Th	FAC 22	102-2	Introduction to Music Literature and History		<i>Prereq.: 105. Winter quarter only.</i>				
1	9:00-9:50	MTuWThF	FAC 22	106-4	Theory of Music		<i>Prereq.: none.</i>				
1	10:00-10:50	MTuWThF	FAC 22	200-3	Fundamentals of Music		<i>Prereq.: 205. Winter quarter only.</i>	51	11:00-11:50	M W F	113
1	2:00-2:50	M W F	FAC 21	300-3	Music Education—Elementary						
1	9:00-9:50	M W F	FAC 21	302-3	Music Education in the Junior High School		<i>Prereq.: junior standing. Music majors only. Winter quarter only.</i>				
1	3:00-3:50	M F	FAC 22	310-2	Orchestration II		<i>Prereq.: 309. Winter quarter only.</i>				
1	10:00-10:50	Th	FAB 27	313-2	Composition II		<i>Prereq.: 312. One hour of class plus individual conference. Winter quarter only. One hour to be arranged.</i>				
1	9:00-9:50	Tu Th	FAB 1	319-2	Conducting—Choral and Instrumental		<i>Prereq.: 318. Winter quarter only.</i>				
1	2:00-2:50	Tu Th	FAB 1	327-2	Analysis II		<i>Prereq.: 326. Winter quarter only. To be taken concurrently with 331.</i>				
1	2:00-2:50	M W F	FAC 22	331-2	Music History and Literature		<i>Prereq.: 330. Winter quarter only. To be taken concurrently with 327.</i>				
1	10:00-10:50	Tu	FAB 1	345-1	Madrigal Singers		<i>Prereq.: audition.</i>				
1	11:00-11:50	Tu	FAC 21	355-1	Chamber Music—Strings		<i>Prereq.: audition.</i>				

1 8:00-8:50 Tu
2 12:00-12:50 Tu
3 11:00-11:50 Tu
4 11:00-11:50 Th

Chamber Music—Woodwinds
Chamber Music—Woodwinds
Chamber Music—Brass
Chamber Music—Brass

Prereq.: audition.
Prereq.: audition.
Prereq.: audition.
Prereq.: audition.

E1 5:00-7:30PM Th
E1 5:00-6:40PM Tu
E1 5:00-6:40PM M

Choral Literature
18th Century Counterpoint
Organization and Administration of the Music Education Program—Elementary

Prereq.: senior standing. Winter quarter only.
Prereq.: 441. Winter quarter only.
Prereq.: graduate level. Winter quarter only.

The following courses are available for music majors and minors and for others under exceptional conditions. Consult the music adviser at Alton or East St. Louis. Each of these courses has only one section. Times to be arranged.

011-1 to 4	Private Violin	031-1 to 4	Private Percussion	471-2 to 8	Private Piano	474D-2 to 8	Private Bassoon
012-1 to 4	Private Viola	041-1 to 4	Private Piano	472-2 to 8	Private Voice	474E-2 to 8	Private Saxophone
013-1 to 4	Private Violoncello	051-1 to 4	Private French Horn	473A-2 to 8	Private Violin	475A-2 to 8	Private Trumpet
014-1 to 4	Private Double Bass	052-1 to 4	Private Trumpet	473B-2 to 8	Private Viola	475B-2 to 8	Private French Horn
021-1 to 4	Private Flute	053-1 to 4	Private Trombone	473C-2 to 8	Private Violoncello	475C-2 to 8	Private Baritone
022-1 to 4	Private Oboe	054-1 to 4	Private Tuba	473D-2 to 8	Private Double Bass	475D-2 to 8	Private Trombone
023-1 to 4	Private Clarinet	055-1 to 4	Private Baritone	474A-2 to 8	Private Flute	475E-2 to 8	Private Tuba
024-1 to 4	Private Bassoon	061-1 to 4	Private Voice	474B-2 to 8	Private Oboe		
025-1 to 4	Private Saxophone	071-1 to 4	Private Organ	474C-2 to 8	Private Clarinet	476-2 to 8	Private Organ

PHILOSOPHY (PHIL)

1 10:00-10:50 Tu Th	SS 1	121-2	Practical Logic II	<i>Prereq.: 120.</i>	51	11:00-11:50 Tu	F	205
E2 6:20-8:10PM Tu	SS 1							
1 1:00-2:50 Tu F	HUM 22	240-4	Ethics	<i>Prereq.: none.</i>	51	9:00-9:50 MTu ThF		106
		301-4	Philosophy of Religion	<i>Prereq.: junior standing or consent of instructor.</i>				
Offered at E. St. Louis. See Bus Sched. on back cover.		B382-4	Medieval and Early Modern Philosophy	<i>Prereq.: junior standing or consent of instructor. Offered once annually and only at East St. Louis.</i>	51	2:00-3:50 M Th		106

See also Govt 485.

PHYSICAL EDUCATION—MEN (PEM)

1 10:00-10:50 F	SS 1	101-1	Orientation in Physical Education	<i>Prereq.: majors and minors only.</i>
1 2:00-2:50 M W	SS 1	114-1	Methods and Materials of Teaching Wrestling	<i>Prereq.: majors and minors only.</i>

WINTER

Alton Campus

WINTER

East St. Louis Campus

SECTION	TIME	DAYS	ROOM	COURSE NO. & CREDIT HOURS	DESCRIPTIVE TITLE	REMARKS	SECTION	TIME	DAYS	ROOM
PHYSICAL EDUCATION—MEN (PEM) (Continued)										
1	9:00-9:50	MTaWTh	ANB 2	116-2	Methods and Materials of Teaching Gymnastics	<i>Prereq.: majors and minors only.</i>				
1	11:00-12:50	M W	ANA 8	117-1	Methods and Materials of Teaching Swimming	<i>Prereq.: none. Required for majors and minors in P.E.</i>				
1	1:00-1:50	Tu ThF	GYM	152-1	Basic Rhythms I	<i>Prereq.: majors and minors only.</i>				
1	Arranged	MTaWThF	Arranged	171-2	Varsity Basketball	<i>Prereq.: consent of instructor.</i>	51	Arranged	MTuWThF	GYM
1	8:00-8:50	W F	GYM	252-1	Required Physical Education (Fencing)	<i>Prereq.: fee.</i>				
2	11:00-12:50	M W	Arranged		(Swimming)	<i>Prereq.: non-swimmers and beginners only.</i>	51	2:00-2:50	M W	GYM
3	10:00-11:50	F	GYM		(Net Games)	<i>Prereq.: none.</i>	52	9:00-9:50	Tu Th	GYM
4	1:00-1:50	Tu Th	GYM		(Square Dance)	<i>Prereq.: none.</i>	53	1:00-1:50	Tu Th	GYM
1	9:00-10:50	W	Arranged	254-1	(Wrestling)	<i>Prereq.: beginners only.</i>	54	1:00-1:50	M W	GYM
2	9:00-10:50	F	Arranged		(Social Dance)	<i>Prereq.: none. Fee. Meets University P.E. requirement.</i>				
1	1:00-1:50	M W	SS 1	261-1	Teaching of Individual Activities I	<i>Prereq.: majors and minors only.</i>				
E 1	6:20-8:10PM	M Th	SS 21	350-4	Methods and Materials for Teaching Physical Education	<i>Prereq.: P.E. majors and El Ed majors.</i>				
1	2:00-2:50	MTu ThF	ANB 21	354-4	Activities in the Elementary School	<i>Prereq.: majors and minors only.</i>				
1	8:00-8:50	MTuW F	SS 21	370-4	Organization and Administration of Physical Education and Athletics	<i>Prereq.: majors and minors only.</i>				
					Tests and Measurements in Physical Education					
PHYSICAL EDUCATION—WOMEN (PEW)										
1	2:00-2:50	Tu ThF	GYM	107-1	Fundamental Rhythms	<i>Prereq.: none.</i>				
1	1:00-2:50	Tu F	Arranged	B204-1	Beginning Swimming	<i>Prereq.: none. Fee.</i>				
1	1:00-2:50	Tu F	Arranged	B205-1	Intermediate Swimming	<i>Prereq.: 204 or equivalent. Fee.</i>				
1	1:00-1:50	Tu Th	GYM	208-1	American Square Dance and Mixers	<i>Prereq.: none.</i>				
1	10:00-10:50	Tu Th	ANB 22	212-1	Basketball	<i>Prereq.: none.</i>				
2	1:00-1:50	M W	AUD 1				51	10:00-10:50	W F	GYM

Offered at Alton. See Bus Sched. on back cover.
Offered at Alton. See Bus Sched. on back cover.

[illegible]

Alton Campus

WINTER

East St. Louis Campus

SECTION	TIME	DAYS	ROOM	COURSE NO. & CREDIT HOURS	DESCRIPTIVE TITLE	REMARKS	SECTION	TIME	DAYS	ROOM
PSYCHOLOGY (PSYC)										
1 E 2	10:00-10:50 8:20-10:10PM	MTuWTh M Th	AUD 5 SCI 300	201-4	Introductory Psychology	<i>Prereq.: none.</i>	51 E 52	3:00-3:50 8:20-10:10PM	MTuWTh M Th	113 113
1 E 1	4:20-6:10PM	M Th	AUD 1	301-4	Child Psychology	<i>Prereq.: 201.</i>	E 51	6:20-8:10PM	Tu F	112
Offered at E. St. Louis. See Bus Sched. on back cover.										
1 E 1	1:00-2:50 6:20-8:10PM	Tu F M Th	ANA 2 ANB 22	B305-4 B307-4 320-4	Adolescent Psychology Personality Dynamics Social Psychology Introduction to Industrial Psychology	<i>Prereq.: 201. Prereq.: 201. Prereq.: 201. Prereq.: 201.</i>	51	6:20-8:10PM 2:00-3:50	M Th	112 203
Offered at Alton. See Bus Sched. on back cover.										
1	11:00-12:50	Tu F	ANB 2	B431-4 432-4	Psychopathology Mental Hygiene	<i>Prereq.: 305 or consent of instructor. Prereq.: Psyc 305 or consent of instructor. 4 additional sessions to be arranged. Same as Guid 412.</i>	Offered at Alton. See Bus Sched. on back cover. E 51	5:30-8:10PM	F	202A
1	Arranged	Arranged	Arranged	479-4	Psychology of Industrial Conflict	<i>Prereq.: 320 or consent of instructor.</i>	E 51	6:20-8:10PM	Tu F	116
1	Arranged	Arranged	Arranged	490-1 to 8	Independent Projects	<i>Prereq.: consent of instructor.</i>	51	Arranged	Arranged	Arranged
SECRETARIAL SCIENCE (SEC SCI)										
1 E 2	9:00-9:50 8:20-10:10PM	MTuWTh Tu F	ANA 3 ANA 3	102-3 103-3	Typewriting I Typewriting II	<i>Prereq.: none. Prereq.: 102 or equivalent.</i>	E 51 51	8:20-10:10PM 1:00-1:50	M Th MTu ThF	223 223
1 E 2	10:00-10:50 6:20-8:10PM	MTuWTh Tu F	ANA 3 ANA 3	104-3 106-4	Typewriting III Shorthand II	<i>Prereq.: 103 or equivalent. Prereq.: 105 or equivalent.</i>	E 51 51	8:20-10:10PM 11:00-11:50	Tu F MTu ThF	223 223
1 E 2	11:00-11:50 8:20-9:10PM	M M	ANA 3 ANA 3	B113-1 113-1	Typewriting-Duplicating Typewriting—Duplicating	<i>Prereq.: 102 or equivalent. Prereq.: 102 or equivalent.</i>	E 52	6:20-8:10PM	M Th	223
Offered at Alton. See Bus Sched. on back cover.										
1 E 2	9:00-9:50 8:20-10:10PM	MTuWTh Tu F	ANA 3 ANA 3	213-3 216-4	Typewriting IV Shorthand IV	<i>Prereq.: 104 or equivalent. Prereq.: 107 or equivalent.</i>	51 E 52 E 51	1:00-1:50 8:20-10:10PM 6:20-8:10PM	MTu ThF Tu F Tu F	223 223 223
1 E 2	2:00-2:50 6:20-8:10PM	MTuWTh M Th	ANA 3 ANA 3	308-4 313-4	Shorthand V Calculating Machines	<i>Prereq.: 216 or equivalent. Prereq.: none.</i>	E 51	6:20-8:10PM	M Th	225
SOCIOLOGY (SOC)										
TV Lec	12:00-12:45	Tu ThF	SCI 208	101-5	Introductory Sociology KETC Channel 9 TV Lecture or	<i>Prereq.: none. Choose one lecture section and one discussion section.</i>	TV Lec	12:00-12:45	Tu ThF	103

[illegible]

each quarter of seniors majoring in zoology.
Prereq.: one year of biology.

Schedule of Classes

Spring Quarter

1962

The following material may be of value in interpreting the information appearing in the class schedule.

- B Course offered only at one campus but scheduled so that students from the other campus may attend by using free bus transportation. See bus schedule on back cover.
- E Evening class.
- ES Evening and Saturday class.
- S Saturday class.

Alton Campus

SPRING

East St. Louis Campus

SECTION	TIME	DAYS	ROOM	COURSE NO. & CREDIT HOURS	DESCRIPTIVE TITLE	REMARKS	SECTION	TIME	DAYS	ROOM
ACCOUNTING (ACCT)										
1	2:00-2:50	MTu ThF	ANA 1	252-4	Elementary Accounting II	Prereq.: 251.	E 51	6:20-8:10PM	Tu	F
E 2	8:20-10:10PM	Tu F	ANA 1							
1	8:00-8:50	MTuWTh	ANA 1	253-4	Elementary Accounting III	Prereq.: 252.	51	10:00-10:50	MTu	ThF
2	10:00-10:50	MTu ThF	ANA 1				E 52	8:20-10:10PM	M	Th
E 3	6:20-8:10PM	M Th	ANA 1				E 53	8:20-10:10PM	Tu	F
E 4	6:20-8:10PM	Tu F	ANA 1							
1	9:00-9:50	MTuWTh	ANA 1	353-4	Advanced Accounting III	Prereq.: 352.	51	2:00-2:50	MTu	ThF
E 2	8:20-10:10PM	M Th	ANA 1	355-3 B355-3 356-5	Governmental Accounting	Prereq.: 253.	E 52	6:20-8:10PM	M	Th
E 1	6:20-7:45PM	Tu F	ANA 2				51	12:00-1:25	Tu	F
Offered at E. St. Louis. See Bus Sched. on back cover.							Prereq.: 253.	51	9:00-9:50	MTuWThF
					Auditing	Prereq.: 353 or consent of instructor.				
1	1:00-2:50	M Th	ANA 2	B432-4	Problems in Federal Taxation	Prereq.: 331.	Offered at Alton. See Bus Sched. on back cover.			
				432-4	Problems in Federal Taxation	Prereq.: 331.	E 51	6:20-8:10PM	Tu	F
E 1	6:20-8:10PM	M Th	ANA 2	442-4	Advanced Cost Accounting	Prereq.: 341.	51	11:00-11:50	MTu	ThF
1	11:00-12:50	M Th	ANA 1	B458-4	Accounting Systems	Prereq.: 341 and 353.	Offered at Alton. See Bus Sched. on back cover.			
1	Arranged	Arranged	Arranged	459-4	Internship in Accounting	Prereq.: outstanding record in accounting and recommendation of the committee on internship.	51	Arranged	Arranged	Arranged
ANTHROPOLOGY (ANTH)										
1	11:00-12:50	Tu F	SS 21	B409-4	Anthropology and Modern Life.	Prereq.: none.	Offered at Alton. See Bus Sched. on back cover.			
APPLIED SCIENCE (AP SCI)										
1	2:00-5:50	Tu F	ANA 7	206-4	Descriptive Geometry	Prereq.: 101 and Math 112.	E 51	6:00-9:50PM	M	Th
E 2	6:00-9:50PM	Tu F	ANA 7							
E 1	6:20-7:45PM	Tu F	ANA 6	262-3	Analytical Mechanics (Dynamics II)	Prereq.: 261.	E 51	8:20-9:45PM	M	Th
1	11:00-2:50	Tu F	SCI 109	B264-4	Surveying II	Prereq.: 263.	Offered at Alton. See Bus Sched. on back cover.			
ART (ART)										
1	2:00-3:50	MTu ThF	FAA 2	100-5	Basic Studio	Prereq.: none. 15 hours of 100 for all studio courses other than 300.	51	10:00-11:50	MTu	ThF
E 2	2:00-2:50	W						10:00-10:50	W	
	6:20-9:50PM	M Th	FAA 2							214

1	2	E 3	9:00-9:50 11:00-11:50 6:20-7:45PM	M	ThF	FAA 4 FAA 4 FAA 4	120-3	Art Appreciation	Prereq.: none. Satisfies general University requirement.	51 52 E 53	9:00-9:50 2:00-2:50 6:20-7:45PM	M	W	F	103 215 212
1	1	1	2:00-3:50	MTu	ThF	FAA 3	203-4	Beginning Ceramics	Prereq.: 15 hours of 100.						
1	1	1	11:00-12:50	MTuWTh	FAA 21	245-4	4	Figure	Prereq.: 12 hours of 245 or consent of instructor.						
1	1	1	2:00-3:50	MTu	ThF	Alby St. Su.	250-4	Oil Painting							
1	1	2	9:00-10:50 12:00-1:50	M	W	FAA 23 FAA 23	300-4	Art Education	Prereq.: none. For elementary education majors and art education majors. Student may elect up to 12 hours. (At East St. Louis the spring quarter offering of this course is for students who are enrolling for the first time.)	51	1:00-2:50	M	W	F	21 4
E 1			6:20-9:00PM	Tu	F	FAA 3	302-4	Beginning and Advanced Ceramics	Prereq.: 203 or consent of instructor.						
1			2:00-3:50	MTu	ThF	Alby St. Su.	320-4	Advanced Painting	Prereq.: 12 hours of 250 or consent of instructor.						
1			11:00-12:50	MTuWTh	FAA 21		323-4	Advanced Figure and Outdoor Sketching	Prereq.: 12 hours of 245.						
1			Arranged	Arranged	Arranged		325-4	Studio	Prereq.: consent of instructor.						
E 1			6:20-8:10PM	M	Th	FAA 4	328-4	History of World Art III	Prereq.: 327 or consent of instructor.						
1			9:00-10:50	MTu	ThF	Alby St. Su.	358-4	Prints	Prereq.: 245 and 250 or consent of instructor.	51	Arranged	Arranged	Arranged	Arranged	
E 1			Arranged	Arranged	Arranged		401-4	Research in Painting	Prereq.: consent of instructor.						
E 1			Arranged	Arranged	Arranged		410-4	Research in Prints	Prereq.: consent of instructor.						
BOTANY (BOT)															
							101-5	General Botany	Prereq.: none.	51	10:00-10:50 10:00-11:50 10:00-10:50 8:00-9:50	M	W	F	105 116 105 116
S 1			8:00-5:00	Saturday		SCI 203	131-5	Field Biology	Prereq.: none. Satisfies Illinois state certification requirements in education. Does not satisfy general degree requirement in biological sciences.	52					
									Prereq.: none.						
E 1			6:00-7:15PM 7:25-9:15PM	Tu	F	SCI 205 SCI 203	202-5	General Botany	Prereq.: 101 or 202.						
1			1:00-1:50 12:00-1:50	M	W	SCI 208 SCI 203	203-5	Taxonomy of Local Seed Plants							
							405-5	The Fungi	Prereq.: 101 or 202.	51	12:00-12:50 1:00-2:50	M	W	F	116 116

SPRING

Alton Campus

SPRING

East St. Louis Campus

SECTION	TIME	DAYS	ROOM	COURSE NO. & CREDIT HOURS	DESCRIPTIVE TITLE	REMARKS	SECTION	TIME	DAYS	ROOM	
CHEMISTRY (CHEM)											
1	10:00-10:50	MTu Th	SCI 300	101-4	General Chemistry	Prereq.: none.	51	2:00-2:50	M W F	112	
	8:00-10:50	W	SCI 306					Tu Th	125		
2	10:00-10:50	MTu Th	SCI 300				E 52	10:00-11:50	Tu	F	112
E 3	8:00-10:50	F	SCI 306					6:00-7:15PM	Tu F	125	
	6:00-7:15PM	M	SCI 300					7:25-9:15PM	Tu F		
	7:25-10:15PM	M	SCI 306								
1	12:00-12:50	M W F	SCI 300	112-5	Chemical Principles and Inorganic Chemistry	Prereq.: 111.	E 51	8:20-9:50PM	M Th	103	
	12:00-12:50	Th	SCI 301					6:10-8:00PM	M Th	125	
	12:00-2:50	Tu	SCI 306								
1	8:00-8:50	M W	SCI 300	113-5	Inorganic and Qualitative Analysis	Prereq.: 112.	51	12:00-12:50	MTu Th	113	
	8:00-8:50	F	SCI 301					2:00-4:50	M W	125	
	8:00-10:50	Tu Th	SCI 306								
2	8:00-8:50	M W	SCI 300				52	12:00-12:50	MTu Th	113	
	12:00-12:50	F	SCI 301					2:00-4:50	Tu Th	125	
	12:00-2:50	M W	SCI 306								
1	3:00-3:50	M Th	SCI 301	332-4	Quantitative Analysis	Prereq.: 331.	E 51	6:00-7:30PM	M Th	112	
	1:00-3:50	Tu F	SCI 307					Lab. to be arranged.			
E 1	6:00-7:15PM	Tu F	SCI 301	343-5	Organic Chemistry	Prereq.: 342.	51	10:00-10:50	M W F	205	
	7:25-10:15PM	Tu F	SCI 307					1:00-3:50	Tu Th	123	
E 1	7:00-7:50PM	M	SCI 301	375-0 to 1	Senior Seminar	Prereq.: senior with major in chemistry.	51	Arranged	Arranged	Arranged	
E 1	6:00-6:50PM	M	SCI 301	412-4	Inorganic Preparations	Prereq.: 331 or 306 or 343.					
	7:00-9:50PM	M Th	SCI 307								
				432-4	Instrumental Analytical Techniques	Prereq.: 331 and 461.	51	11:00-11:50	Tu Th	201B	
1	9:00-9:50	M W	SCI 301					Lab. to be arranged.			
	8:00-10:50	Tu Th	SCI 307	446-4	Qualitative Organic Chemistry	Prereq.: 343.	51	2:00-2:50	M W	202B	
1	2:00-2:50	MTu ThF	SCI 301					Lab. to be arranged.			
	Lab. to be arranged.			460-5	Theoretical Chemistry	Prereq.: 331 or 306 or 342, and one year of physics.					
1	11:00-11:50	M W F	SCI 301					Prereq.: 462.			
	12:00-2:50	Th	SCI 303	463-4	Physical Chemistry		E 51	6:00-7:30PM	M Th	202B	
								Lab. to be arranged.			
ECONOMICS (ECON)											
1	10:00-10:50	MTuWThF	SCI 208	205-5	Survey of Economic Principles	Prereq.: sophomore standing.	51	9:00-9:50	MTuWThF	204	
E 2	8:20-10:35PM	Tu F	ANA 2				E 52	5:55-8:10PM	M Th	105	
1	9:00-9:50	MTu ThF	ANA 2	206-4	Economic Principles and Problems	Prereq.: 205.	E 51	8:20-10:10PM	M Th	106	
E 1	5:55-8:10PM	M Th	ANA 6	307-4	Economic and Business Statistics	Prereq.: 205. Math 106 recommended.	51	10:00-10:50	MTuWThF	215	
2	8:00-8:50	MTuWThF	ANA 2								

1	11:00-12:50	M	Th	ANA 6	B308-4 310-4	Economic and Business Statistics II Labor Problems	<i>Prereq.: 307 or consent of instructor.</i>	Offered at Alton. See Bus Sched. on back cover.
1	12:00-12:50	MTu	ThF	ANA 2	315-4	Money and Banking I	<i>Prereq.: 206, or 205 and consent of instructor.</i>	E 51 6:20-8:10PM M Th 106
E 2	6:20-8:10PM	Tu	F	ANA 8			<i>Prereq.: 205.</i>	51 9:00-9:50 MTuWTh 215
E 1	8:20-10:10PM	M	Th	ANA 6	317-4	Economic History of the United States	<i>Prereq.: 205.</i>	E 51 6:20-8:10PM Tu F 106
Offered at E. St. Louis. See Bus Sched. on back cover.								
					B411-4	Collective Bargaining and Dispute Settlement	<i>Prereq.: 310 or consent of instructor.</i>	51 2:00-3:50 Tu F 201A
Offered at E. St. Louis. See Bus Sched. on back cover.								
1	1:00-2:25	M	Th	ANB 22	B470-3 B481-3	Business Cycles Comparative Economic Systems	<i>Prereq.: 315 or consent of instructor.</i> <i>Prereq.: 205 or consent of instructor.</i>	51 12:00-1:25 Tu F 202A Offered at Alton. See Bus Sched. on back cover.

EDUCATIONAL ADMINISTRATION (ED AD)

Offered at E. St. Louis. See Bus Sched. on back cover.								
E 1	4:45-6:10PM	M	Th	ANA 2	B331-3 331-3	The American Educational Systems	<i>Prereq.: none.</i>	51 12:00-1:25 M Th 221
E 1	8:20-10:10PM	Tu	F	AUD 3	335-4	The American Educational Systems	<i>Prereq.: none.</i>	
2	11:00-12:50	Tu	F	ANB 1	B355-4	Philosophy of Education	<i>Prereq.: none.</i> <i>Prereq.: none.</i>	E 51 4:20-6:10PM Tu F 105 Offered at Alton. See Bus Sched. on back cover.
E 1	5:30-8:10PM	W		AUD 4	420-4	Legal Basis of American Education	<i>Prereq.: none. 4 additional sessions to be arranged.</i>	E 51 5:30-8:10PM W 202B
E 1	5:30-8:10PM	Th		AUD 4	431-4	History of Education in the United States	<i>Prereq.: none. 4 additional sessions to be arranged.</i>	E 51 5:30-8:10PM M 201A
1	Arranged	Arranged	Arranged	Arranged	500-4 575-2 to 4	Research Methods Individual Research	<i>Prereq.: graduate standing. 422 recommended.</i> <i>Prereq.: graduate standing and consent of instructor.</i>	S 51 9:00-11:40AM Saturday 201A 51 Arranged Arranged Arranged

EDUCATION ELEMENTARY (EE EL)

1	2:00-2:50	Tu	Th	AUD 2	203-3	Understanding the Elementary School Child	<i>Prereq.: Psyc 201. 2 hours per week observation arranged.</i>	51 2:00-2:50 Tu Th 215
E 1	4:20-6:10PM	M	Th	AUD 2	314-4 316-4	Elementary School Methods Kindergarten-Primary	<i>Prereq.: Guid 305.</i> <i>Prereq.: Guid 305.</i>	E 51 6:20-8:10PM Tu F 105
E 1	6:20-8:10PM	Tu	F	AUD 4	337-4	Methods and Curriculum Reading in the Elementary Schools	<i>Prereq.: 314 or 316, and Guid 305.</i>	
1	Arranged	Arranged	Arranged	Arranged	350D-8 to 12	Kindergarten-Primary Student Teaching	<i>Prereq.: must apply to education division two quarters in advance.</i>	51 Arranged Arranged Arranged

SPRING

Alton Campus

SPRING

East St. Louis Campus

SECTION	TIME	DAYS	ROOM	COURSE NO. & CREDIT HOURS	DESCRIPTIVE TITLE	REMARKS	SECTION	TIME	DAYS	ROOM
EDUCATION ELEMENTARY (ED EL) (Continued)										
1	Arranged	Arranged	Arranged	350E-4 to 8	Advanced Kindergarten-Primary Student Teaching	<i>Prereq.: 350D.</i>	51	Arranged	Arranged	Arranged
1	Arranged	Arranged	Arranged	351D-8 to 12	Elementary Student Teaching	<i>Prereq.: must apply to education division two quarters in advance.</i>	51	Arranged	Arranged	Arranged
1	Arranged	Arranged	Arranged	351E-4 to 8	Advanced Elementary Student Teaching	<i>Prereq.: 351D.</i>	51	Arranged	Arranged	Arranged
1	Arranged	Arranged	Arranged	507-2 to 4	Readings in Reading	<i>Prereq.: graduate standing and consent of instructor.</i>	51	Arranged	Arranged	Arranged
E 1	5:30-8:10PM	F	AUD 2	542-4	Language Arts in the Elementary School	<i>Prereq.: graduate standing.</i>	E 51	5:30-8:10PM	Th	201A
1	Arranged	Arranged	Arranged	543-4	Teaching the Social Studies in the Elementary School	<i>Prereq.: graduate standing.</i>	E 51	5:30-8:10PM	Tu	201A
				557-4	The Elementary Principals	<i>Prereq.: graduate standing.</i>	51	Arranged	Arranged	Arranged
				575-2 to 4	Individual Research	<i>Prereq.: graduate standing and consent of instructor.</i>				
EDUCATION INDUSTRIAL (ED I)										
				506-4	Problems of Co-ordinator	<i>Prereq.: none.</i>	E 51	5:30-8:10PM	W	211
EDUCATION SECONDARY (ED SEC)										
1	1:00-2:50	Tu	F	B315-4	High School Methods	<i>Prereq.: Guid 305.</i>	Offered at Alton. See Bus Sched. on back cover.			
1	Arranged	Arranged	Arranged	315-4	High School Methods	<i>Prereq.: Guid 305.</i>	E 51	6:20-8:10PM	M Th	225
1	Arranged	Arranged	Arranged	352D-8 to 12	Secondary Student Teaching	<i>Prereq.: must apply to education division two quarters in advance.</i>	51	Arranged	Arranged	Arranged
E 1	5:30-8:10PM	F	ANB 2	352E-4 to 8	Secondary Student Teaching	<i>Prereq.: 352D.</i>	51	Arranged	Arranged	Arranged
				407-4	The Junior High School	<i>Prereq.: none. 4 additional sessions to be arranged.</i>				
S 1	9:00-11:40AM	Saturday	AUD 3	487-4	Teaching the Natural Sciences in Secondary Schools	<i>Prereq.: 315 or consent of instructor. 4 additional sessions to be arranged.</i>	E 51	5:30-8:10PM	Tu	116
				488-4	Teaching the Social Studies in the Secondary School	<i>Prereq.: 315 or consent of instructor. 4 additional sessions to be arranged.</i>				
1	Arranged	Arranged	Arranged	550-4	Core Curriculum in the Secondary School	<i>Prereq.: graduate standing.</i>	E 51	5:30-8:10PM	W	201A
				575-2 to 4	Individual Research	<i>Prereq.: graduate standing and consent of instructor.</i>	51	Arranged	Arranged	Arranged

E1	Arranged	Ed Ed	351D-8	Elementary Student Teaching	Prereq.: consent of instructor. Application two quarters in advance. Must be taken with Ed Sp 420.
E1	5:30-8:10PM	SS 21	414-4	The Exceptional Child	Prereq.: Guid 305 or Psyc 301 or Psyc 303. 4 additional sessions to be arranged.
E1	5:30-8:10PM	SS 21	420-4	Methods and Materials for Teaching Exceptional Children	Prereq.: 410. Must be taken with 351D. 4 additional sessions to be arranged.
1	1:00-2:50	ANB 1	B428-4	Speech Correction for the Classroom Teacher	Prereq.: Spch 101. Recommended for education majors. Same as Spch 428.
ENGLISH (ENG)					
1B	8:00-8:50	AUD 1	101-3	Composition	Prereq.: none.
2B	3:00-3:50	AUD 3			
E 3B	8:20-10:10PM	AUD 2			
1B	9:00-9:50	AUD 4	102-3	Composition	Prereq.: 101.
2B	12:00-12:50	AUD 2			
E 3B	8:20-10:10PM	AUD 1			
1A	11:00-11:50	SCI 102	103-3	Composition	Prereq.: 102.
2A	2:00-2:50	AUD 4			
3B	8:00-8:50	AUD 3			
4B	9:00-9:50	AUD 3			
5B	9:00-9:50	AUD 1			
6B	10:00-10:50	AUD 2			
7B	11:00-11:50	AUD 3			
8B	12:00-12:50	AUD 3			
9B	1:00-1:50	AUD 4			
10B	1:00-1:50	AUD 3			
11B	2:00-2:50	AUD 3			
12B	3:00-3:50	AUD 1			
E 13B	6:20-8:10PM	AUD 2			
E 14B	8:20-10:10PM	AUD 3			
E 15B	6:20-8:10PM	Tu			
E 16B	8:20-10:10PM	Tu			
1	11:00-11:50	M	205-3	Introduction to Poetry	Prereq.: 103 or equivalent.
E1	6:20-7:45PM	M	206-3	Introduction to Drama	Prereq.: 103 or equivalent.
			209-3	Introduction to World Literature	Prereq.: 103 or equivalent.
			212-3	Introduction to Modern Literature	Prereq.: 103 or equivalent.
1	10:00-10:50	AUD 4	310-4	A Survey of American Literature since 1860	Prereq.: sophomore literature requirement.
E2	6:20-8:10PM	Tu			

Offered at Alton. See Bus Sched. on back cover.

SPRING

211

113

113

211

211

211

211

211

211

211

211

211

211

211

211

HUM 2

RUSSIAN (RUSS)

103-4	Elementary Russian	Prereq.: 102.	51	12:00-1:50	M	Th	202A
153-3	Intermediate Composition and Reading	Prereq.: 152 or consent of instructor.	E 52 E 51	6:20-8:10PM 8:20-9:45PM	Tu Tu	F F	104 202A

SPANISH (SPAN)

1	Elementary Spanish	Prereq.: 102.	51	3:00-3:50	MTu	ThF	211
153-3	Intermediate Course	Prereq.: 152 or consent of instructor.	E 51	6:20-8:10PM 8:20-9:45PM	Tu Tu	F F	215 215

GEOGRAPHY (GEOG)

1	Cultural Geography	Prereq.: none.	51	10:00-10:50	M	W	F	113
2			52	8:00-8:50	Tu	Th		222
3			53	10:00-10:50	M	W	F	113
			54	10:00-10:50	Tu	Th		205
				5:55-8:10PM	Tu	F		222
101-5	Physical Geography	Prereq.: none. Natural science credit for education majors.	51 E 52	1:00-1:50 5:55-8:10PM	MTuWThF M	Th		222 222
211-5	Economic Geography	Prereq.: none. Required for business majors.	51	11:00-11:50	MTuWThF			222
314-4	Geography of Anglo-America	Prereq.: none. Natural science credit for education majors.						
318-4	Geography of Asia	Prereq.: none. Natural science credit for education majors.						
319-4	Historical Geography of the United States	Prereq.: none.						
B321-2	Geography of Australia	Prereq.: none. Natural science credit for education majors. Offered every other year.						
B322-3	Geography of the Pacific	Prereq.: none. Natural science credit for education majors. Offered every other year.						
323-3	Geography of the Near East	Prereq.: none. Natural science credit for education majors.						
324-4	Restoration and Conservation of Natural Resources	Prereq.: none. Natural science credit for education majors.						
404-4	Advanced Economic Geography I (Agricultural)	Prereq.: 210 or 211 or consent of instructor.	ES 51	8:20-10:10PM	W			222
435-4	Geography of Landforms	Prereq.: 101 or consent of instructor. Natural Science credit for education majors.	E 51	11:00-12:50PM 8:20-10:10PM	Saturday M	Th		222 222

SPRING

East St. Louis Campus

SPRING

Alton Campus

SECTION	TIME	DAYS	ROOM	COURSE NO. & CREDIT HOURS	DESCRIPTIVE TITLE	REMARKS	SECTION	TIME	DAYS	ROOM
GOVERNMENT (GOVT)										
1	8:00-8:50	MTuWThF	ANA 5	190-5	American Government	<i>Prereq.: none.</i>	51	8:00-8:50	MTuWThF	204
2	9:00-9:50	MTuWThF	SCI 208				52	1:00-1:50	MTuWThF	204
3	11:00-11:50	MTuWThF	SCI 300				ES 53	5:55-8:10PM	W	203
4	1:00-1:50	MTuWThF	SCI 301					8:35-10:50AM	Saturday	203
5	2:00-2:50	MTuWThF	ANA 4							
E 6	5:55-8:10PM	Tu F	ANA 5							
GOVERNMENT (GOVT)										
				360-4	Introduction to Public Administration	<i>Prereq.: 101 or 190 or 231.</i>	51	9:00-9:50	MTuWTh	104
E 1	8:20-9:45PM	M Th	AUD 4	373-3	International Politics of Europe	<i>Prereq.: 370 or consent of instructor.</i>				
1	11:00-11:50	MTuWTh	AUD 4	380-4	Political Parties	<i>Prereq.: 101 or 190 or 231.</i>				
				B435-4	Government and Business	<i>Prereq.: 101 or 190 or 231.</i>	51	10:00-11:50	M Th	224
				B457-4	Government and Politics in the Near and Middle East	<i>Prereq.: 101 or 190 or 231. Offered only at East St. Louis and once each year.</i>	51	12:00-1:50	M Th	224
				B473-3	Metropolitan Studies and Research	<i>Prereq.: 232 or 360 or consent of instructor. Offered only at East St. Louis.</i>	51	2:00-3:25	M Th	224
				486-4	Contemporary Political Theories	<i>Prereq.: six hours of government or philosophy. May be counted as credit towards government or philosophy.</i>	E 51	8:20-10:10PM	Tu F	104
1	9:00-10:50	Tu F	ANA 8	B496-4	Constitutional Law II	<i>Prereq.: 101 or 190 or 231. Offered only at Alton and once each year.</i>				
GUIDANCE (GUID)										
ES 1	6:20-8:10PM	W	ANA 2	305-4	Educational Psychology	<i>Prereq.: Psyc 201. 4 additional sessions to be arranged (section S 51 only).</i>	S 51	9:00-11:40AM	Saturday	204
2	9:00-10:50AM	Saturday	ANA 2				E 52	4:20-6:10PM	Tu F	211
	1:00-2:50	Tu F	ANB 1	B305-4	Educational Psychology	<i>Prereq.: Psyc 201.</i>				
E 1	5:30-8:10PM	M	AUD 4	412-4	Mental Hygiene	<i>Prereq.: 305. 4 additional sessions to be arranged. Same as Psyc 432.</i>				
				420-4	Educational Statistics	<i>Prereq.: 305. 4 additional sessions to be arranged.</i>	E 51	5:30-8:10PM	M	116
E 1	5:30-8:10PM	Th	SCI 301	422-4	Educational Measurements I	<i>Prereq.: 305. 4 additional sessions to be arranged.</i>	S 51	9:00-11:40AM	Saturday	211
E 1	5:30-8:10PM	Tu	SS 1	442-4	Basic Principles of Guidance	<i>Prereq.: 305. 4 additional sessions to be arranged.</i>				
1	Arranged	Arranged	Arranged	501-2 to 6	Special Research Problems	<i>Prereq.: graduate standing and consent of instructor.</i>	51	Arranged	Arranged	Arranged

Offered at Alton. See Bus Sched. on back cover.

Offered at Alton. See Bus Sched. on back cover.

East St. Louis Campus

SPRING

Alton Campus

SECTION	TIME	DAYS	ROOM	COURSE NO. & CREDIT HOURS	DESCRIPTIVE TITLE	REMARKS	SECTION	TIME	DAYS	ROOM
HISTORY (HIST) (Continued)										
1	11:00-12:25	Tu F	AUD 1	B416-3 441-3	The Age of the Reformation American Diplomacy Since 1898	<i>Prereq.: Freshman survey. Prereq.: 202.</i>	E 51	Offered at Alton. See Bus Sched. on back cover. 8:20-9:45PM	Tu F	202B
				454-3	Biography in American History	<i>Prereq.: 201 or 202.</i>	51	9:00-9:50	M WTh	201A
				500-4	History Seminar	<i>Prereq.: graduate standing. Seminar on the American Revolution.</i>	E 51	Arranged	Arranged	Arranged
HUMANITIES (HUM)										
1	8:30-9:50	Tu	LL 21	303-3	Humanities III (Honors Program)	<i>Prereq.: sophomore literature requirement. Undergraduate credit only. Entrance by invitation of Honors Program Committee.</i>	51	1:00-2:30	W	101
INSTRUCTIONAL MATERIALS (I M)										
				417-4	Audio-Visual Methods in Education	<i>Prereq.: Guid 305. 4 additional sessions to be arranged.</i>	E 51	5:30-8:10PM	F	116
E 1	5:30-8:10PM	Tu	SS 21	420-4	School Library Activities and Practice	<i>Prereq.: 306, 308, 403, and 405 or 406. 4 additional sessions to be arranged.</i>				
JOURNALISM (JRNL)										
				B103-3	News	<i>Prereq.: none. Offered once annually and only at East St. Louis.</i>	51	2:00-3:25	M Th	103
Offered at E. St. Louis. See Bus Sched. on back cover.										
1	1:00-2:25	Tu F	SU	B203-3	News Writing and Editing III	<i>Prereq.: 202. Offered once annually and only at Alton.</i>				
MANAGEMENT (MGT)										
				170-4	Introduction to Business Administration	<i>Prereq.: none.</i>	51 E 52	10:00-10:50 6:20-8:10PM	MTuWTh M Th	204 104
1	11:00-11:50	MTuW F	ANA 8	271-4	Business Writing	<i>Prereq.: Eng 103.</i>	51	11:00-11:50	MTuWTh	223
1	12:00-12:50	MTuWThF	ANA 8	320-5	Corporation Finance	<i>Prereq.: Act 253 and Econ 205.</i>				
Offered at E. St. Louis. See Bus Sched. on back cover.										
ES 1	8:20-10:10PM	W	ANA 8	B323-4 323-4	Investments	<i>Prereq.: 320. Prereq.: 320.</i>	51	2:00-3:50	Tu F	203
	10:00-12:50AM	Saturday	ANA 8							
E 1	8:20-9:45PM	M Th	ANA 2	327-4 328-3	General Insurance Real Estate	<i>Prereq.: Act 253 and Econ 206. Prereq.: junior standing.</i>	E 51	8:20-10:10PM	M Th	202B

1	8:00-8:50	MTuWTh	ANA 8	340-4	Business Organization and Management	Prereq.: junior standing or consent of instructor.	51	11:00-11:50	MTaWTh	202A
1	9:00-9:50	M WTh	ANB 21	361-3	Business Report Writing	Prereq.: junior standing.	E 52	8:20-10:10PM	Tu F	112
1	8:00-8:50	M WThF	ANB 21	373-4	Business Law III	Prereq.: 372.	E 51	6:20-7:45PM	M Th	224
E 2	6:20-8:10PM	Tu F	ANB 21				51	8:00-8:50	MTaWTh	225
1	11:00-11:50	MTuWTh	ANB 21	380-4	Production Management	Prereq.: Econ 206.	E 52	8:20-10:10PM	Tu F	225
E 2	6:20-8:10PM	M Th	ANB 21				E 51	6:20-8:10PM	Tu F	224
1	10:00-10:50	MTuWTh	ANA 6	385-4	Personnel Management	Prereq.: Econ 206.				
1	1:00-2:50	M Th	ANA 8	B421-4	Management of Business Finance	Prereq.: 320.				
						Offered at Allon. See Bus Sched. on back cover.				
							ES 51	6:20-8:10PM	W	202A
								9:00-10:50AM	Saturday	202A
							51	12:00-1:50	Tu F	202B
Offered at E. St. Louis. See Bus Sched. on back cover.				B473-4	Business Enterprise and Public Policy	Prereq.: senior standing.				
E 1	6:20-8:10PM	M Th	ANA 8	475-4	Budgeting and Systems	Prereq.: 320 and Act 253.				
E 1	8:20-10:10PM	M Th	ANA 8	485-4	Problems in Personnel Management	Prereq.: 385.				
MARKETING (MKTG)										
1	1:00-1:50	MTuWThF	SCI 300	230-5	Principles of Marketing	Prereq.: Econ 205 or consent of instructor.	E 51	5:55-8:10PM	M Th	204
E 1	6:20-8:10PM	Tu F	ANA 4	332-4	Store Management	Prereq.: 331.	E 51	6:20-8:10PM	Tu F	205
				333-4	Principles of Advertising	Prereq.: 230.				
				334-4	Credits and Collections	Prereq.: 230.	E 51	8:20-10:10PM	M Th	224
1	11:00-12:25	M Th	ANB 1	B336-3	Purchasing	Prereq.: 230.				
				337-4	Principles of Salesmanship	Prereq.: 230.	51	11:00-11:50	MTaWTh	225
1	9:00-10:25	M Th	ANB 1	B349-3	Wholesaling	Prereq.: 230. Offered once annually and only at Allon.				
Offered at E. St. Louis. See Bus Sched. on back cover.										
				B451-4	Traffic Management	Prereq.: consent of instructor. Offered once annually and only at East St. Louis.	51	2:00-3:50	Tu F	224
E 1	6:20-7:45PM	M Th	ANB 1	463-3	Advertising Management	Prereq.: 333.				
1	10:00-10:50	MTuWTh	ANB 22	490-4	Marketing Research and Analysis	Prereq.: consent of division.				
MATHEMATICS (MATH)										
1	8:00-8:50	MTuWThF	ANA 4	106-4	General Mathematics I	Prereq.: none. Student will not receive credit for 106 if he has had 3 semesters of high school algebra or any college math.	51	2:00-2:50	MTaWThF	220
2	8:00-8:50	M W F	ANA 4				52	2:00-2:50	M W F	220
								2:00-2:50	Tu Th	211
E 3	8:20-10:10PM	Tu F	SCI 209				E 53	8:20-10:10PM	M Th	220
1	10:00-10:50	MTu ThF	SCI 209	107A-4	General Mathematics II	Prereq.: 106 or 3 semesters of high school algebra.	51	11:00-11:50	MTu ThF	220
E 2	6:20-8:10PM	M Th	ANA 4				52	1:00-1:50	MTu ThF	220
1	3:00-3:50	MTu ThF	ANA 5	107B-4	General Mathematics II (Business)	Prereq.: 106 or 3 semesters of high school algebra.	51	3:00-3:50	MTu ThF	221
E 2	6:20-8:10PM	Tu F	SCI 209				E 52	6:20-8:10PM	M Th	220

SPRING

Alton Campus

SPRING

East St. Louis Campus

SECTION	TIME	DAYS	ROOM	COURSE NO. & CREDIT HOURS	DESCRIPTIVE TITLE	MATHEMATICS (MATH) (Continued)	REMARKS	SECTION	TIME	DAYS	ROOM
MATHEMATICS (MATH) (Continued)											
1 ES 2	12:00-12:50 8:20-10:35PM	MTuWThF W	SCI 209	112-5	Elementary Analysis II	<i>Prereq.: 111 or 1½ years of high school algebra and 90% on guidance test.</i>		51 ES 52	1:00-1:50 5:55-8:10PM	MTuWThF W	205 220
1	8:00-8:50	MTuWThF	SCI 209	113-5	Calculus and Analytic Geometry I	<i>Prereq.: 112 or ½ year of high school trigonometry and 97% on guidance test.</i>		51	8:00-8:50	MTuWThF	220
2	10:00-10:50	MTuWThF	ANA 4					52	9:00-9:50	MTuWThF	220
3	1:00-2:50	MTuWThF	SCI 209					53	2:00-2:50	MTuWThF	205
E 4	8:20-10:35PM	M Th	SCI 209					E 54	8:20-10:10PM	Tu F	220
1	3:00-3:50	MTu ThF	SCI 209	210-4	The Teaching of Elementary Mathematics	<i>Prereq.: 106.</i>		51	3:00-3:50	MTu ThF	220
1	11:00-11:50	TuWThF	SCI 209	252-4	Calculus and Analytic Geometry III	<i>Prereq.: 251.</i>		E 51	6:20-8:10PM	Tu F	220
E 2	6:20-8:10PM	M Th	SCI 209	253-4	Calculus and Analytic Geometry IV	<i>Prereq.: 252.</i>		51	10:00-10:50	MTu ThF	220
1	8:00-8:50	TuWThF	SCI 103								
2	1:00-1:50	MTu ThF	ANA 4								
ES 3	6:20-8:10PM	W	ANA 4								
	9:00-10:50AM	Saturday									
MUSIC (MUS)											
<i>Offered at E. St. Louis. See Bus Sched. on back cover.</i>											
1	3:00-3:50	MTu Th	ANA 6	B311-3 322-3	The Teaching of Mathematics Fundamental Concepts of Algebra III	<i>Prereq.: 320. Prereq.: 321.</i>		51	12:00-1:15	Tu F	203
1	9:00-9:50	M W F	ANA 4	400-3	History of Mathematics	<i>Prereq.: 252.</i>		51	2:00-3:15	Tu F	104
E 1	6:20-7:35PM	Tu F	SCI 102	408-3	Boundary Value Problems	<i>Prereq.: 306.</i>		E 52	8:20-9:35PM	Tu F	205
<i>Offered at E. St. Louis. See Bus Sched. on back cover.</i>											
E 1	8:20-9:35PM	M Th	SCI 103	B412-3 412-3	Statistical Analysis III	<i>Prereq.: 411.</i>		E 51	8:20-9:35PM	M Th	205
1	1:00-2:15	M Th	ANA 5	454-3 B482-3	Advanced Calculus Probability and Statistics	<i>Prereq.: 453. Prereq.: 481.</i>		<i>Offered at Alton. See Bus Sched. on back cover.</i>			
				503-3	Real Variable	<i>Prereq.: 502.</i>		E 51	6:20-7:35PM	M Th	201B
MUSIC (MUS)											
1	1:00-1:50	MTuWThF	FAB 1	001-1	University Band	<i>Prereq.: open to all University students upon audition.</i>		51	11:00-11:50	M W F	AUD
E 1	8:15-10:15PM	M	AUD 5	002A-½	University Chorus	<i>Prereq.: open to all University students upon audition.</i>		E 51	8:15-10:15PM	Tu	212
1	11:00-11:50	M W F	FAB 1	002C-1	Collegiate Singers	<i>Prereq.: open to all University students upon audition.</i>		51	12:00-12:50	Tu Th	212
E 1	Arranged	Arranged	Arranged	003-1	Orchestra	<i>Prereq.: open by audition. Credit for music majors only.</i>					
1	9:00-9:50	Tu Th	FAC 21	010-1	Class Strings	<i>Prereq.: none. Two quarters or proficiency required of majors. One hour to be arranged.</i>					

Prereq.: none. Two quarters or proficiency required of majors.

1	2:00-2:50	M	W	F	FAC 21	020A-1	Class Flute
1	2:00-2:50	M	W	F	FAC 21	020B-1	Class Oboe
1	2:00-2:50	M	W	F	FAC 21	020C-1	Class Clarinet
1	2:00-2:50	M	W	F	FAC 21	020D-1	Class Bassoon
1	2:00-2:50	M	W	F	FAC 21	020E-1	Class Saxophone
1	8:00-8:50	M	W	F	FAC 2	040-1	Class Piano
2	1:00-1:50	M	W	F	FAC 2		
3	2:00-2:50	M	W	F	FAC 2		

Prereq.: none for majors. Six quarters or proficiency required of majors. Prereq. for non-majors: Music 200 or equivalent.

(Mus 200 and 040 may be taken concurrently.) Allot: section one for 1st year music majors; section three, 2nd year music majors; section two, non-music majors. East St. Louis: section fifty-one, non-music majors.

Prereq.: none. Two quarters or proficiency required of majors.

1	8:00-8:50	M	W	F	FAB 1	050A-1	Class French Horn
1	8:00-8:50	M	W	F	FAB 1	050B-1	Class Trumpet
1	8:00-8:50	M	W	F	FAB 1	050C-1	Class Trombone
1	8:00-8:50	M	W	F	FAB 1	050D-1	Class Tuba
1	8:00-8:50	M	W	F	FAB 1	050E-1	Class Baritone
1	10:00-10:50	M	W	F	Arranged	060-1	Class Voice

Prereq.: none. Three quarters or proficiency required of music majors.

E 1	6:20-7:45PM	Tu	F	FAC 22	100-3	Music Understanding
-----	-------------	----	---	--------	-------	---------------------

Prereq.: none. For general University students. (Music majors should take 101, 102, 103 sequence.)

Prereq.: 102. Spring quarter only.

1	11:00-11:50	Tu	Th	FAC 22	103-2	Introduction to Music Literature and History
1	9:00-9:50	MTuWThF		FAC 22	107-4	Theory of Music

Prereq.: 102. Spring quarter only.

1	10:00-10:50	MTuWThF		FAC 22	207-4	Theory of Music
---	-------------	---------	--	--------	-------	-----------------

Prereq.: 206. Spring quarter only.

1	9:00-9:50	M	W	F	FAC 21	300-3	Music Education—Elementary
---	-----------	---	---	---	--------	-------	----------------------------

Prereq.: 200 or equivalent. (Non-music majors.)

Prereq.: junior standing. Music majors only. Spring quarter only.

Prereq.: 310. Spring quarter only.

Prereq.: 313. One hour of class plus individual conference. Spring quarter only. One hour to be arranged.

Prereq.: 327. Spring quarter only. To be taken concurrently with 332.

Prereq.: 331. Spring quarter only. To be taken concurrently with 328.

Prereq.: audition.

Prereq.: audition.

Prereq.: audition.

Prereq.: audition.

Prereq.: audition.

Prereq.: audition.

Prereq.: audition.

SPRING

1	2:00-2:50	Tu	Th	FAB 1	328-2	Analysis III	<i>Prereq.: 327. Spring quarter only. To be taken concurrently with 332.</i>
1	2:00-2:50	M	W	F	FAC 22	332-2	<i>Prereq.: 331. Spring quarter only. To be taken concurrently with 328.</i>
1	10:00-10:50	Tu		FAB 1	345-1	Madrigal Singers	<i>Prereq.: audition.</i>
1	11:00-11:50	Tu		FAB 21	355-1	Chamber Music—Strings	<i>Prereq.: audition.</i>
1	8:00-8:50	Tu		FAC 22	365a-1	Chamber Music—Woodwinds	<i>Prereq.: audition.</i>
2	12:00-12:50	Tu		FAC 22	365b-1	Chamber Music—Woodwinds	<i>Prereq.: audition.</i>

East St. Louis Campus

SPRING

Alton Campus

SECTION	TIME	DAYS	ROOM	COURSE NO. & CREDIT HOURS	DESCRIPTIVE TITLE	MUSIC (MUS) (Continued)	REMARKS	SECTION	TIME	DAYS	ROOM
---------	------	------	------	---------------------------	-------------------	-------------------------	---------	---------	------	------	------

3	11:00-11:50	Tu	FAB 1	365c-1	Chamber Music—Brass	Prereq.: audition.					
4	11:00-11:50	Th	FAB 1	365d-1	Chamber Music—Brass	Prereq.: audition.					
E 1	5:00-7:40PM	W	FAC 21	413-3	Chamber Music Literature	Prereq.: senior standing. Spring quarter only.					
E 1	5:00-6:40PM	Tu	FAB 1	443-2	Canon & Fugue	Prereq.: 441. Spring quarter only.					
E 1	5:00-7:30PM	M	FAC 21	554-3	Seminar in Instrumental Materials and Techniques	Prereq.: graduate level. Spring quarter only.					

The following courses in applied music are available for music majors and minors and for others under exceptional conditions. Consult the music adviser at Alton or East St. Louis. Each of these courses has only one section. Times to be arranged.

011-1 to 4	Private Violin	471-2 to 8	Private Piano	474D-2 to 8	Private Bassoon
012-1 to 4	Private Viola	472-2 to 8	Private Piano	474E-2 to 8	Private Saxophone
013-1 to 4	Private Violoncello	473A-2 to 8	Private Voice	475A-2 to 8	Private Trumpet
014-1 to 4	Private Double Bass	473B-2 to 8	Private Viola	475B-2 to 8	Private French Horn
021-1 to 4	Private Flute	473C-2 to 8	Private Violoncello	475C-2 to 8	Private Baritone
022-1 to 4	Private Oboe	473D-2 to 8	Private Double Bass	475D-2 to 8	Private Trombone
023-1 to 4	Private Clarinet	474A-2 to 8	Private Flute	475E-2 to 8	Private Tuba
024-1 to 4	Private Bassoon	474B-2 to 8	Private Oboe	476-2 to 8	Private Organ
025-1 to 4	Private Saxophone	474C-2 to 8	Private Clarinet		

PHILOSOPHY (PHIL)

E 1	8:20-10:10PM	M	Th	SS 1	200-4	Types of Philosophy: An Introduction	Prereq.: none.	E 51	6:20-8:10PM	Tu	F	201B
1	1:00-1:50	MTuWTh	ANA 6		240-4	Ethics	Prereq.: none.					
					B383-4	Recent Philosophy	Prereq.: junior standing or consent of instructor. Offered once annually and only at East St. Louis.	51	2:00-3:50	M	Th	204

Offered at E. St. Louis. See Bus Sched. on back cover.

See also Govt 486.

PHYSICAL EDUCATION—MEN (PEM)

1	9:00-9:50	Tu	Th	SS 21	118-1	Methods and Materials of Teaching Tennis	Prereq.: majors and minors only.					
1	1:00-1:50	M	W	SS 21	119-1	Methods and Materials of Teaching Golf	Prereq.: majors and minors only.					
1	10:00-10:50	MTu	Th	AUD 3	153-1	Teaching of Team Games II	Prereq.: majors and minors only.					
1	Arranged	MTuWThF	Arranged		173-2	Varsity Tennis	Prereq.: consent of instructor.	51	Arranged	MTuWThF		CYM
1	Arranged	MTuWThF	Arranged		176-2	Varsity Golf	Prereq.: consent of instructor.	51	Arranged	MTuWThF		CYM

East St. Louis Campus

SPRING

Alton Campus

SECTION	TIME	DAYS	ROOM	COURSE NO. & CREDIT HOURS	DESCRIPTIVE TITLE	REMARKS	SECTION	TIME	DAYS	ROOM
PHYSICAL EDUCATION—WOMEN (PEW) (Continued)										
1	9:00-10:50	Tu Th	GYM	322-2	Techniques of Teaching Individual Sports III	<i>Prereq.: PEW majors and minors only.</i>				
1	2:00-2:50	W F	ANA 5	323-1	Officiating Techniques III	<i>Prereq.: none.</i>				
E1	6:20-8:10PM	M Th	AUD 3	350-4	Methods and Materials for Teaching Physical Education Activity in the Elementary School	<i>Prereq.: PEW majors and Ed Ed majors.</i>	E 51	6:20-8:10PM	M Th	GYM
1	3:00-3:50	M Th	AUD 4	352-2	History of Physical Education	<i>Prereq.: PEW majors and minors only.</i>				
1	8:00-8:50	MTuW F	SS 21	353-4	Organization and Administration of Physical Education	<i>Prereq.: PEW majors and minors only.</i>				
1	11:00-12:50	M	Arranged	377-1	Horseback Riding	<i>Prereq.: none. Fee.</i>				
PHYSICS (PHYS)										
1	10:00-10:50	MTuWTh	SCI 103	101-4 103-4	Survey of Physics Problems in Elementary Physics	<i>Prereq.: Math 106 or equivalent.</i> <i>Prereq.: 101 and 102.</i>	51	9:00-9:50	MTaWThF	124A
1	1:00-2:50	M Th	SCI 103	B212-5	University Physics	<i>Prereq.: 211.</i>	Offered at Alton. See Bus Sched. on back cover.			
1	9:00-9:50	M W F	SCI 102	213-5	University Physics	<i>Prereq.: 212.</i>	51	2:00-3:50	M Th	124A
	9:00-10:50	Th	SCI 102					2:00-3:50	W	124
2	9:00-10:50	Tu	SCI 107				E 52	6:00-9:05PM	M Th	121A
	9:00-9:50	M W F	SCI 102							
	9:00-10:50	Th	SCI 102							
	2:00-3:50	Tu	SCI 107							
1	1:00-2:50	M Th	SCI 102	302-4 B303-5	Mechanics Heat	<i>Prereq.: 301.</i> <i>Prereq.: 213 and Math 253, or concurrent enrollment. Laboratory periods to be arranged at Alton and East St. Louis. Lectures only at Alton.</i>	E 51	6:20-8:10PM	Tu F	121A
Offered at E. St. Louis. See Bus Sched. on back cover.							Offered at Alton. See Bus Sched. on back cover.			
				B306-4	Introduction to Electrical Theory II	<i>Prereq.: 305.</i>	51	12:00-1:50	Tu F	124A
Offered at E. St. Louis. See Bus Sched. on back cover.										
				B307-2	Electrical Measurements	<i>Prereq.: 306.</i>	51	2:00-3:50	Tu F	124A
E1	6:00-8:15PM	M Th	SCI 103	450-5	Introduction to Solid State Physics	<i>Prereq.: 314.</i>				
1	1:00-2:25 1:00-2:50	TuW F	SCI 103 SCI 103	503-5	Methods of Theoretical Physics III	<i>Prereq.: 502.</i>				

PSYCHOLOGY (PSYC)

1 E 2	9:00-9:50 8:20-10:10PM	MTuWTh M Th	AUD 5 SCI 300	201-4	Introductory Psychology	<i>Prereq.: none.</i>	51 E 52	1:00-1:50 6:20-8:10PM	MTuWTh Tu F	212 113
1 E 1	1:00-2:50 4:20-6:10PM	Tu F M Th	SCI 102 ANA 8	B301-4 301-4 303-4 311-4	Child Psychology Child Psychology Adolescent Psychology Experimental Psychology	<i>Prereq.: 201. Prereq.: 201. Prereq.: 201. Prereq.: 201.</i>	Offered at Alton. See Bus Sched. on back cover. Offered at Alton. See Bus Sched. on back cover. Offered at Alton. See Bus Sched. on back cover.			103 103 220 220
1 E 1	1:00-2:50 5:30-8:10PM	Tu F M	ANB 22 AUD 4	B407-4 B431-4 432-4	Theories of Learning Psychopathology Mental Hygiene	<i>Prereq.: 201. Offered once annually. Prereq.: 305 or consent of instructor. Prereq.: 305 or consent of instructor. 4 additional sessions to be arranged. Same as Guid 412.</i>	51	2:00-3:50	M Th	105
1	Arranged	Arranged	Arranged	490-1 to 8	Independent Projects	<i>Prereq.: consent of instructor.</i>	51	Arranged	Arranged	Arranged

SECRETARIAL SCIENCE (SEC SCI)

1 E 2	9:00-9:50 8:20-10:10PM	MTuWTh Tu F	ANA 3 ANA 3	102-3	Typewriting I	<i>Prereq.: none.</i>	E 51	8:20-10:10PM	Tu F	223
1 E 2	9:00-9:50 8:20-10:10PM	MTuWTh Tu F	ANA 3 ANA 3	103-3 104-3	Typewriting II Typewriting III	<i>Prereq.: 102 or equivalent. Prereq.: 103 or equivalent.</i>	E 51 E 51	8:20-10:10PM 8:20-10:10PM	Tu F M Th	223 223
1 E 2	10:00-10:50 6:20-8:10PM	MTuWTh Tu F	ANA 3 ANA 3	107-4	Shorthand III	<i>Prereq.: 106 or equivalent.</i>	51 E 52	3:00-3:50 6:20-8:10PM	MTu ThF M Th	223 223
1 E 2	1:00-2:50 6:20-8:10PM	M Th M Th	ANA 3 ANA 3	213-3 B307-4 307-4	Typewriting IV Secretarial Practice Secretarial Practice	<i>Prereq.: 104 or equivalent. Prereq.: 213 and 216. Prereq.: 213 and 216.</i>	E 51 E 51	8:20-10:10PM 6:20-8:10PM	M Th Tu F	223 223
1 E 1	8:20-10:10PM	M Th	ANA 3	308-4	Shorthand V	<i>Prereq.: 216 or equivalent.</i>	E 51	6:20-8:10PM	M Th	223
1 E 1	8:20-10:10PM	M Th	ANA 3	313-4	Calculating Machines	<i>Prereq.: none.</i>	E 51	8:20-10:10PM	M Th	223
1 E 1	6:20-8:10PM	M Th	ANB 2	407-4	Office Management	<i>Prereq.: consent of instructor.</i>	E 51	6:20-8:10PM	Tu F	223

SOCIOLOGY (SOC)

TV Lec	12:00-12:45	Tu ThF	SCI 208	101-5	Introductory Sociology KETC Channel 9 TV Lecture or KETC Channel 9 TV Lecture Discussion Discussion Discussion	<i>Prereq.: none. Choose one lecture section and one discussion section.</i>	TV Lec	12:00-12:45	Tu ThF	103
E TV Lec	6:45-7:30PM	M WTh	SCI 208				E TV Lec	6:45-7:30PM	M WTh	103
1	12:00-12:50	M	AUD 1				51	12:00-12:50	M	220
2	12:00-12:50	W	AUD 1				52	12:00-12:50	W	220
E 3	7:20-8:10PM	Tu	AUD 2				E 53	7:20-8:10PM	Tu	202B
1	10:00-10:50	MTuWThF	ANB 21	102-5	Social Problems	<i>Prereq.: none.</i>				
1	9:00-9:50	TuWThF	HUM 2	241-4	Marriage and Parenthood	<i>Prereq.: 101 or consent of instructor.</i>				
				306-4	Social Control	<i>Prereq.: 101 or consent of instructor.</i>	E 51	6:20-8:10PM	M Th	203

SPRING

Alton Campus

SPRING

East St. Louis Campus

SECTION	TIME	DAYS	ROOM	COURSE NO. & CREDIT HOURS	DESCRIPTIVE TITLE	REMARKS	SECTION	TIME	DAYS	ROOM
SOCIOLOGY (SOC) (Continued)										
1	8:00-8:50	MTuWTh	ANA 6	320-4	Race and Minority Group Relations	Prereq.: 101 or consent of instructor.	ES 51	6:20-8:10PM 9:00-10:50AM	W Saturday	205 205
ES 1	8:20-10:10PM 11:00-12:50p.m.	W Saturday	SS 1 SS 1	338-4	Industrial Sociology	Prereq.: 101 or consent of instructor.				
Offered at E. St. Louis. See Bus Sched. on back cover.										
				B340-4	The Family	Prereq.: 101 or consent of instructor. Offered only at East St. Louis.	51	2:00-3:50	M Th	225
				372-4	Criminology	Prereq.: 101 or consent of instructor.	E 51	6:20-8:10PM	Tu F	204
E 1	8:20-10:10PM	Tu	SS 1	400-2 427-4	Current Sociology Personality and Social Adjustment	Prereq.: 8 hours of sociology. Prereq.: 321 or psychology 305 or consent of instructor.	51 51	8:40-8:50 9:00-9:50	M MTuWTh	202B 202B
1	1:00-2:50	Tu F	SS 1	B451-4	Social Thought II: The Sociological Movement	Prereq.: background in 19th century history or literature. Offered once annually and only at Alton.	Offered at Alton. See Bus Sched. on back cover.			
Offered at E. St. Louis. See Bus Sched. on back cover.										
				B482-3 B484-3	Social Work in Selected Agencies Survey Course in Marriage Counseling	Prereq.: 480 or consent of instructor. Offered once annually. Prereq.: 241 and consent of instructor. Offered only at East St. Louis.	51 51	10:00-11:25 12:00-1:25	M M Th Th	202B 124A
SPEECH (SPCH)										
Principles of Speech										
TV Lec	12:00-12:30	M W	SCI 208	101-4	KETC Channel 9, TV Lecture	Prereq.: none. Lecture demonstration may be viewed in Room S 208 (Alton) or Room 103 (East St. Louis) or on home receivers, KETC Channel 9. Required for speech majors, elementary and secondary education majors. Also required for associate degree in business.	TV Lec	12:00-12:30	M W	103
E TV Lec	7:30-8:00PM	Tu Th	SCI 208				E TV Lec	7:30-8:00PM	Tu Th	103
1	9:00-9:50	W F	ANB 2		Discussion		51	10:00-10:50	W F	112
2	10:00-10:50	W F	ANB 1		Discussion		52	11:00-11:50	W F	106
3	1:00-1:50	W F	ANB 2		Discussion		53	1:00-1:50	W F	106
4	2:00-2:50	W F	ANB 2		Discussion		E 54	6:00-7:50PM	W	106
E 5	6:00-7:50PM	M	ANB 22	102-4	Public Speaking	Prereq.: 101 or consent of instructor. Required for speech majors.	51	8:40-8:50	MTu ThF	106
1	11:00-11:50	MTu ThF	ANB 2	103-4 104-4	Oral Interpretation Training the Speaking Voice	Prereq.: 101 or consent of instructor. Prereq.: none.	51	9:00-9:50	MTu ThF	106
E 1	8:20-10:10PM	M	ANB 1	201-2	Parliamentary Law	Prereq.: 101 or consent of instructor.				
1	10:00-10:50	MTu F	ANB 2	202-3	Principles of Discussion	Prereq.: 101 or consent of instructor.				
1	Arranged	Arranged	Arranged	B209-1	Forensic Activities	Prereq.: none.	Offered at Alton. See Bus Sched. on back cover.			

273-4		Basic Radio Production		Prereq.: 101 or consent of instructor.		51	10:00-10:50	MTu	ThF	106
1	1:00-2:50	Tu	ANB 2	Radio, TV & Society	Prereq.: 273 or consent of instructor.					
1	Arranged	Arranged	Arranged	Readings in Speech	Prereq.: junior standing and consent of instructor.	51	Arranged	Arranged	Arranged	Arranged
1	1:00-2:50	M	ANB 1	Speech Correction for the Classroom Teacher	Prereq.: 101. Recommended for education majors. Same as Ed Sp 428.					
THEATER (THEA)										
Offered at E. St. Louis. See Bus Sched. on back cover.										
B208-1		Dramatic Activities		Prereq.: none. Credit earned by participation in public performance.		51	12:00-1:50	MTu	ThF	AUD
Offered at E. St. Louis. See Bus Sched. on back cover.										
B308-1		Dramatic Activities		Prereq.: none. Credit earned by participation in public performance.		51	12:00-1:50	MTu	ThF	AUD
Offered at E. St. Louis. See Bus Sched. on back cover.										
B313-4		History of Theater		Prereq.: 101 and junior standing.		51	2:00-3:50	M	Th	106
ZOOLOGY (ZOO)										
Offered at E. St. Louis. See Bus Sched. on back cover.										
100-5		Principles of Animal Biology		Prereq.: none.						
1	2:00-2:50	M	SCI 300							
	12:00-1:50	W	SCI 205							
2	2:00-2:50	Tu	SCI 300							
	2:00-3:50	W	SCI 205							
	6:00-7:15PM	Th	SCI 203							
E 3	7:25-9:15PM	M	SCI 205							
1	3:00-3:50	Tu	SCI 208	General Vertebrate Zoology	Prereq.: 100.	51	3:00-3:50	M	Th	116
	2:00-3:50	W	SCI 205				2:00-3:50	Tu	W	F
1	9:00-9:50	M	SCI 209	Ornithology	Prereq.: 100. Several Saturday field trips required.					
	9:00-10:50	Tu	SCI 205							
1	3:00-3:50	Tu	SCI 102	Entomology	Prereq.: 102.					
	12:00-1:50	M	SCI 205							
1	2:00-2:50	M	SCI 208	Animal Ecology	Prereq.: 102 and 103.					
	2:00-3:50	W	SCI 203							
1	11:00-11:50	Tu	SCI 208	Field Zoology	Prereq.: one year of zoology.					
	10:00-11:50	W	SCI 208							
1	4:00-4:50	Th	SCI 203	Zoology Seminar	Prereq.: one year of biology. Required each quarter of seniors majoring in zoology.					
382C-½										
Offered at E. St. Louis. See Bus Sched. on back cover.										
407-5		Parasitology		Prereq.: one year of zoology.						
1	10:00-10:50	Tu	SCI 209							
	10:00-11:50	W	SCI 205							

SPRING



Quarter Year

of advisement.

(Record Number)

(Phone Number)

orks

[illegible]



Year

STUDENT[illegible]

ADDRESS

(Number and Street)	(City and State)	(Phone Number)

MAJOR _____ MINORS _____

CLASS _____ Day () Evening () Number of hours student works _____

[illegible]



Quarter _____ Year _____

The student will prepare a program on this form to be presented to his academic adviser at the time of advisement.

[illegible]

ADDRESS _____ (Number and Street) _____ (City and State) _____ (Phone Number)

MAJOR _____ MINORS _____

CLASS _____ Day () _____ Evening () _____ Number of hours student works _____

[illegible]



Quarter _____ Year _____

Year _____

(Record Number)

(Phone Number)

MINORS

Number of hours student works

[illegible]



Quarter _____ Year _____

The student will prepare a program on this form to be presented to his academic adviser at the time of advisement.

(Last) (First) (Middle)

(Record Number)

(Number and Street) (City and State)

(Phone Number)

MINORS

(City and State)

(Phone Number)

CLASS _____ Day () Evening () Number of hours student works

[illegible]

Quarter _____ Year _____

Year _____

STUDENT	(Last)	(First)	(Middle)	(Record Number)
---------	--------	---------	----------	-----------------

ADDRESS		
<hr/>	<hr/>	<hr/>
	<i>(Number and Street)</i>	<i>(City and State)</i>
	<hr/>	<hr/>
		<i>(Phone Number)</i>

MAJOR _____ MINORS _____

CLASS _____ Day () Evening () Number of hours student works _____

[illegible]



Quarter _____ Year _____

academic adviser at the time of advisement.

STUDENT	(Last)	(First)	(Middle)	(Record Number)
---------	--------	---------	----------	-----------------

ADDRESS _____ (Number and Street) _____ (City and State) _____ (Phone Number)

MAJOR	MINORS
-------	--------

CLASS _____ Day () Evening () Number of hours student works _____

[illegible]



Quarter _____ Year _____

Quarter _____ Year _____
academic adviser at the time of advisement.

STUDENT	(Last)	(First)	(Middle)	(Record Number)
---------	--------	---------	----------	-----------------

ADDRESS		
	<i>(Number and Street)</i>	<i>(City and State)</i>
		<i>(Phone Number)</i>

MAJOR _____	MINORS _____
-------------	--------------

CLASS _____ Day () Evening () Number of hours student works _____

[illegible]





Southern Illinois University Foundation

The Southern Illinois University Foundation is a nonprofit corporation chartered by the state and authorized by the Board of Trustees to receive gifts for the benefit of the University, to buy and sell property, and otherwise to serve the University.

It respectfully asks alumni and other citizens of Southern Illinois to consider making gifts and bequests to benefit the University. Such gifts should be conveyed to the Foundation, with proper stipulation as to their uses. The Foundation, through its officers and members, will be glad to confer with intending donors regarding suitable clauses to insert in wills and suitable forms of gifts and memorials, including bequests by means of life insurance. Large or small gifts to the library will be appreciated; likewise, gifts for special equipment, buildings, endowment of professorships in particular subjects, gifts to student loan funds and scholarship funds, gifts for the use of foreign students, and endowments for particular sorts of research. Any gifts or bequests can be given suitable memorial names.

The staff members of the Foundation are

- Mr. Kenneth R. Miller, *Executive Director*, Carbondale, Illinois
- Mrs. Lois H. Nelson, *Secretary*, Carbondale, Illinois
- Mr. Robert L. Gallegly, *Treasurer*, Carbondale, Illinois
- Mr. C. Eugene Peebles, *Assistant Treasurer*, Edwardsville, Illinois
- Mr. C. Richard Gruny, *Legal Counsel*, Carbondale, Illinois
- Mr. L. James Struif, *Assistant Legal Counsel*, Edwardsville, Illinois
- Mr. Donald Leavitt, *Patent Counsel*, St. Louis, Missouri
- Mr. Warren Stookey, *Field Representative*, Edwardsville, Illinois.

BUS SCHEDULE

DEPART	ARRIVE	DEPART	ARRIVE
EAST ST. LOUIS	ALTON	ALTON	EAST ST. LOUIS
8:00 A.M.	8:50 A.M.	9:00 A.M.	9:50 A.M.
10:00 A.M.	10:50 A.M.	11:00 A.M.	11:50 A.M.
12:00 M.	12:50 P.M.	1:00 P.M.	1:50 P.M.
2:00 P.M.	2:50 P.M.	3:00 P.M.	3:50 P.M.
4:00 P.M.	4:50 P.M.		