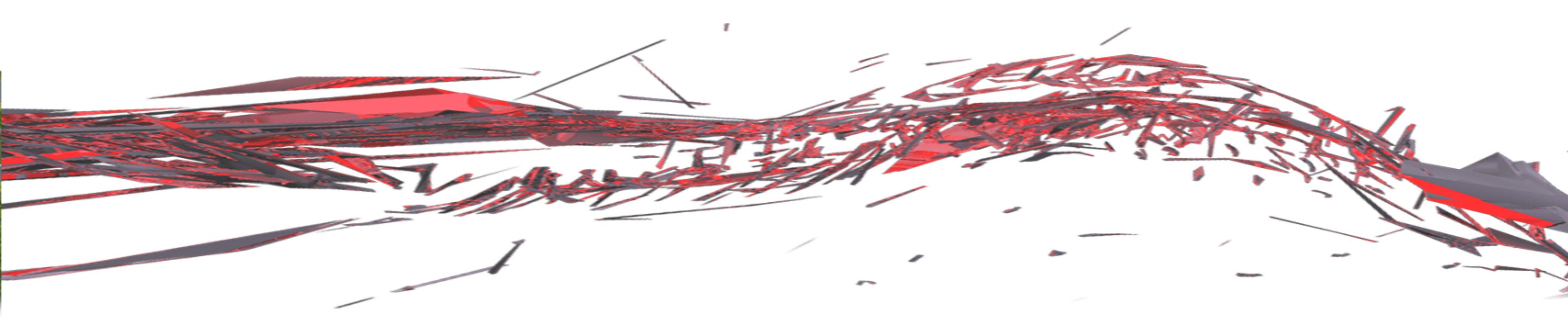
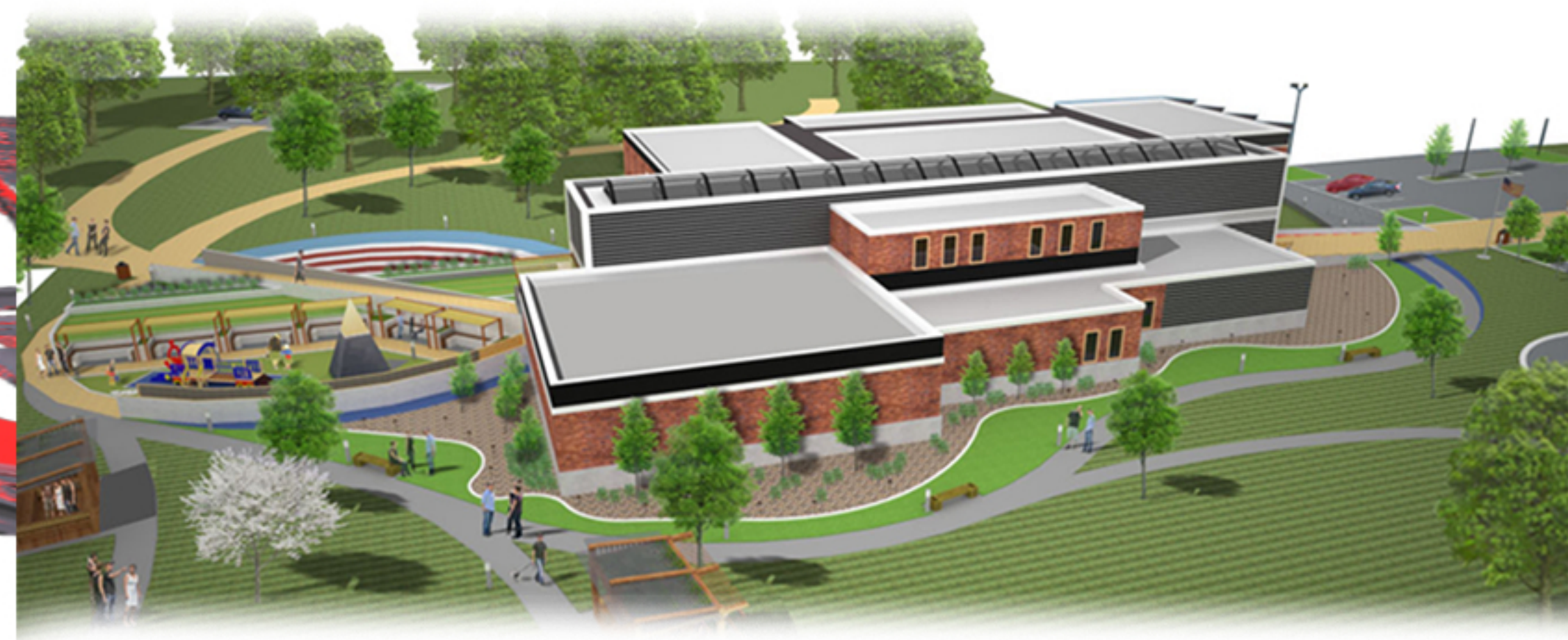


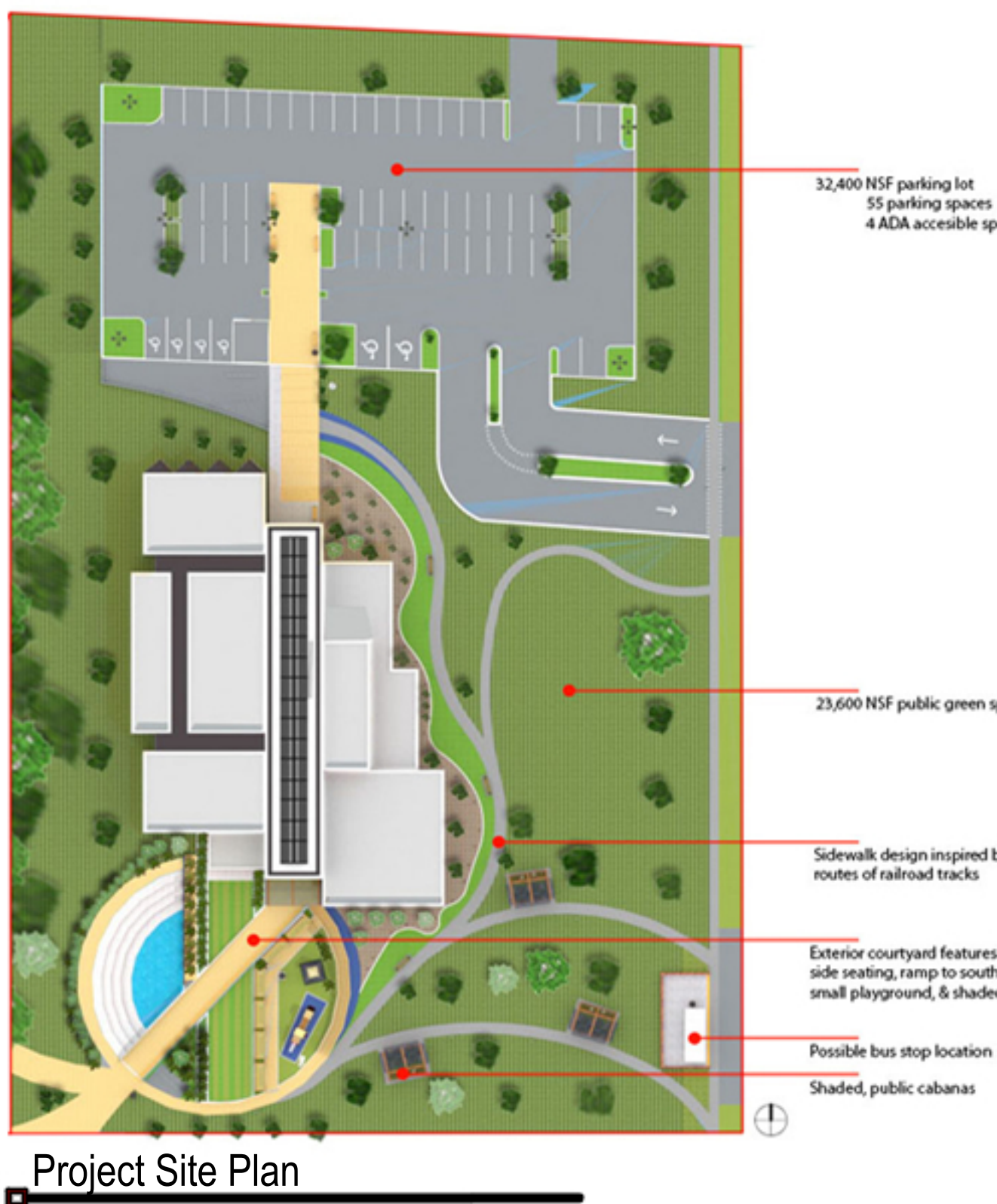
Architectural Intervention: The Resilient Community Center



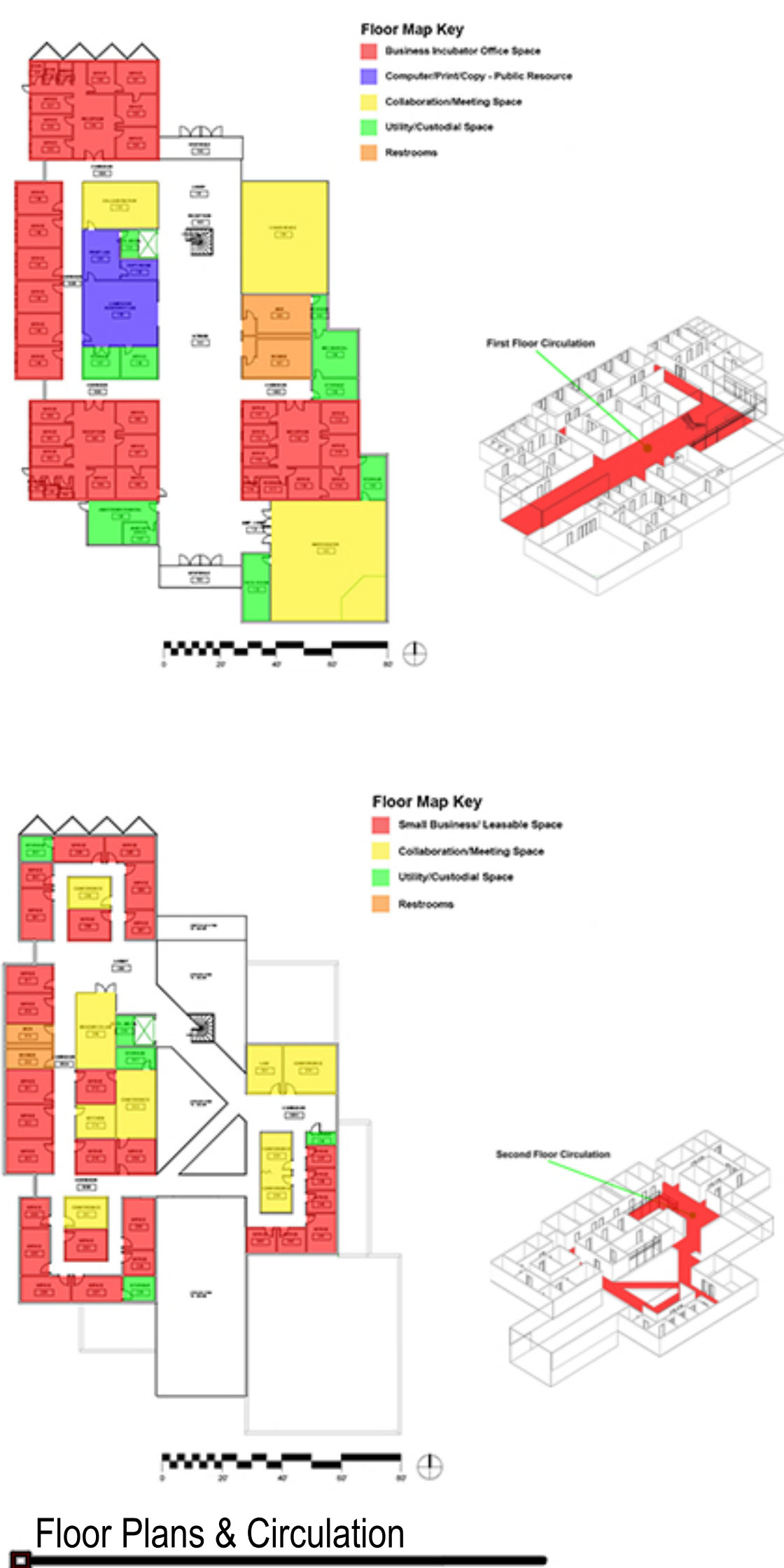
Site & Function Centralia, Illinois is a historic railroad town whose economy is beginning to drastically slow down. Old and new trends have yet to solve the major issues and the city has lost much of its industry after the railroad outlasted its major importance. To intervene, a community center that serves as a **small business incubator** could help shift the current economic challenges by reaching out to help those wanting to create their own business in the city of Centralia and the surrounding region. This building site was chosen due to its connection with the community park and its location in the business district of Centralia. Being located in the current hub of the city allows this center to truly connect with the community and provides a strong message of the direction of the city of Centralia. The community center is where activities and ideas all come together, and the site represents this collaboration.



Project Site Location



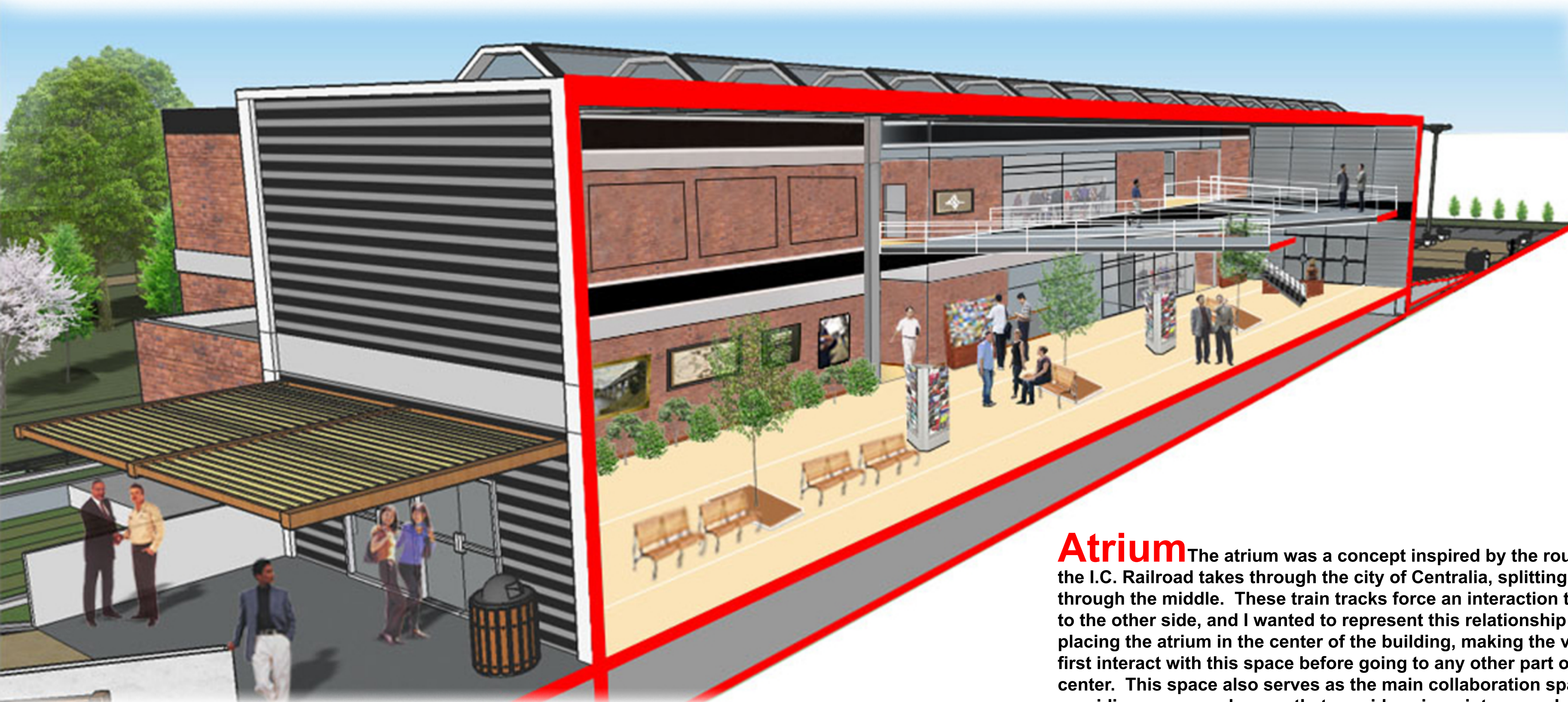
Project Site Plan



Floor Plans & Circulation

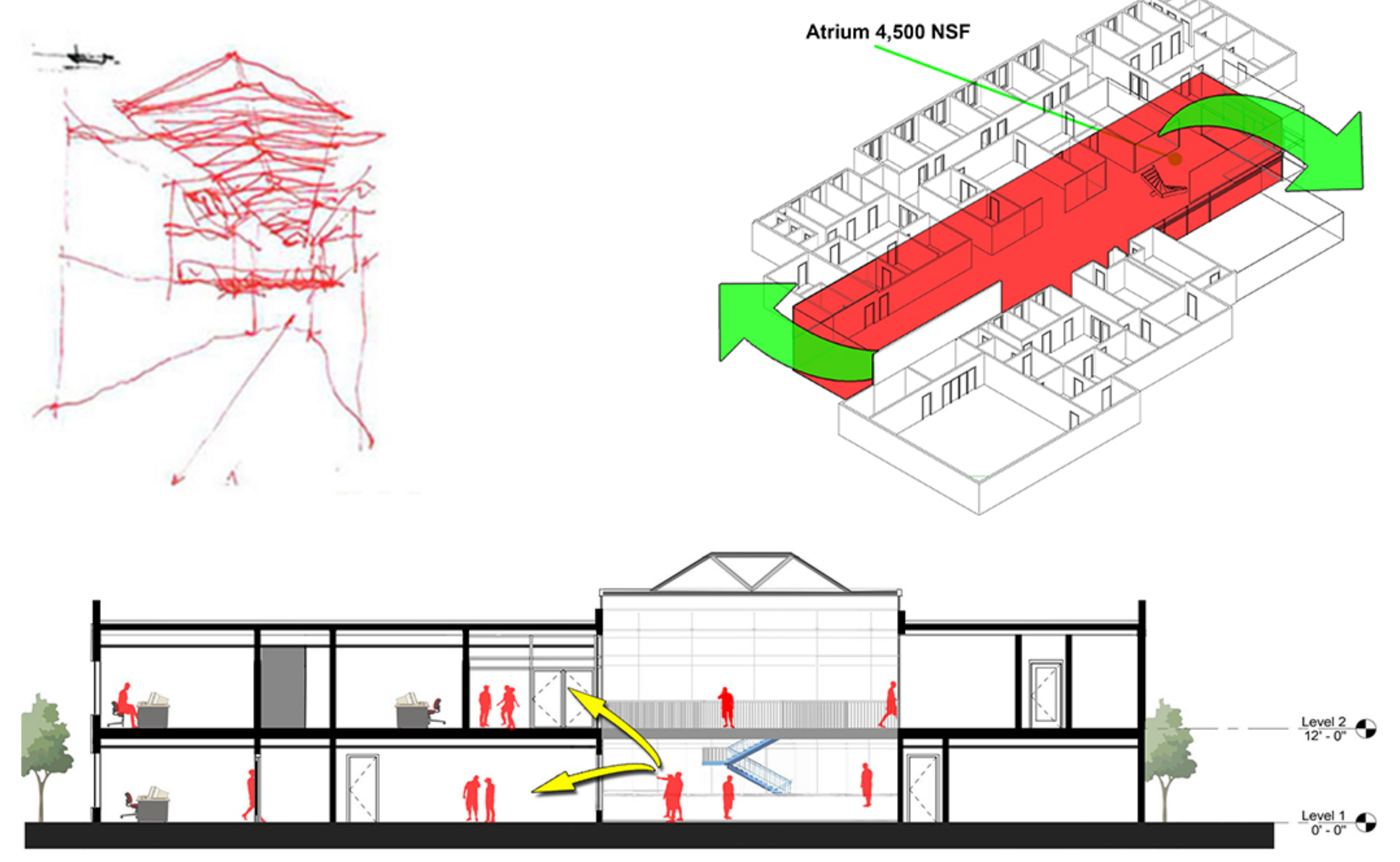


Project Site Plan - Connection with Park



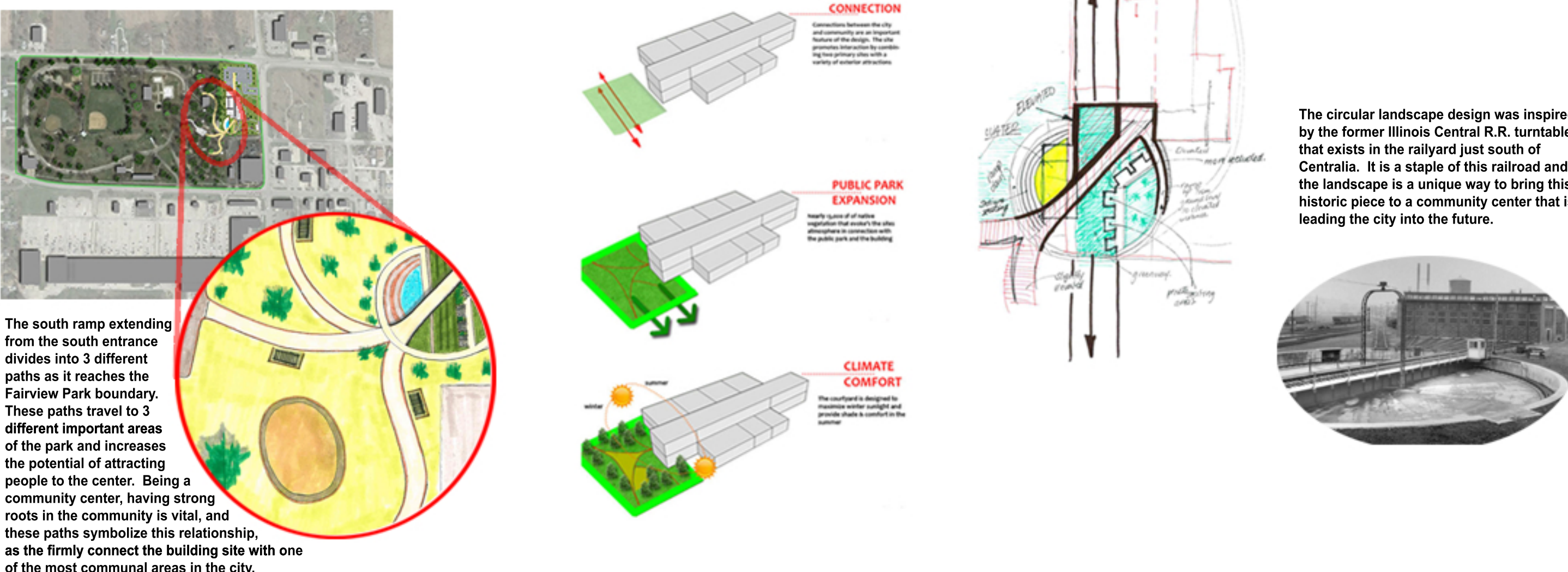
Atrium Section View

Atrium The atrium was a concept inspired by the route that the I.C. Railroad takes through the city of Centralia, splitting it right through the middle. These train tracks force an interaction to cross to the other side, and I wanted to represent this relationship by placing the atrium in the center of the building, making the visitor first interact with this space before going to any other part of the center. This space also serves as the main collaboration space, providing communal space that provides views into many labs, meeting rooms, and offices, showing the progress being made by the center and the city.



Perspective of South Entrance

Landscaping The landscape to the south of the community center was designed to create an attraction and to serve as an addition/expansion to Fairview Park, bringing park visitors to the south entrance of the center. The landscape features several different attractions and serves as a community gathering space for several events that are held in Fairview Park. The organic and curvey design contrasts the rectangular building and symbolizes the growth of not only the park, but the city, expanding into new areas.



East Elevation looking West

