

1966

Southern Illinois University Carbondale Campus

Southern Illinois University Carbondale

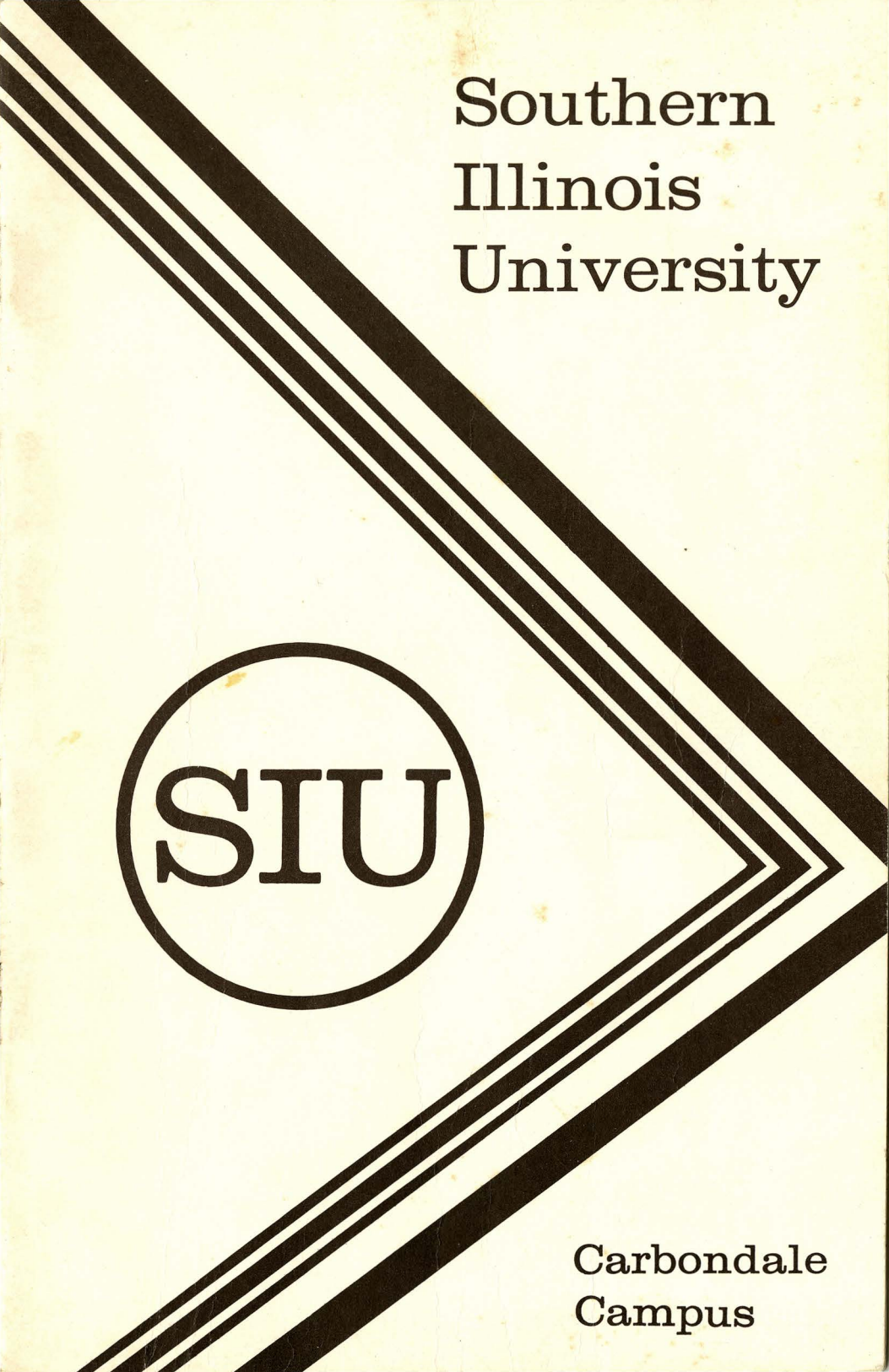
Follow this and additional works at: http://opensiuc.lib.siu.edu/ua_docs

This booklet provides a campus map, photographs of campus buildings, and descriptions of campus buildings (including construction costs) for the Southern Illinois University Carbondale campus circa 1966.

Recommended Citation

, . "Southern Illinois University Carbondale Campus." (Jan 1966).

This Article is brought to you for free and open access by the University Archives at OpenSIUC. It has been accepted for inclusion in SIU Historical Documents by an authorized administrator of OpenSIUC. For more information, please contact opensiuc@lib.siu.edu.



Southern
Illinois
University



Carbondale
Campus

OBJECTIVES OF SOUTHERN ILLINOIS UNIVERSITY

TO EXALT BEAUTY

*In God,
in nature, and
in art;
Teaching how to love the best
but to keep the human touch;*

TO ADVANCE LEARNING

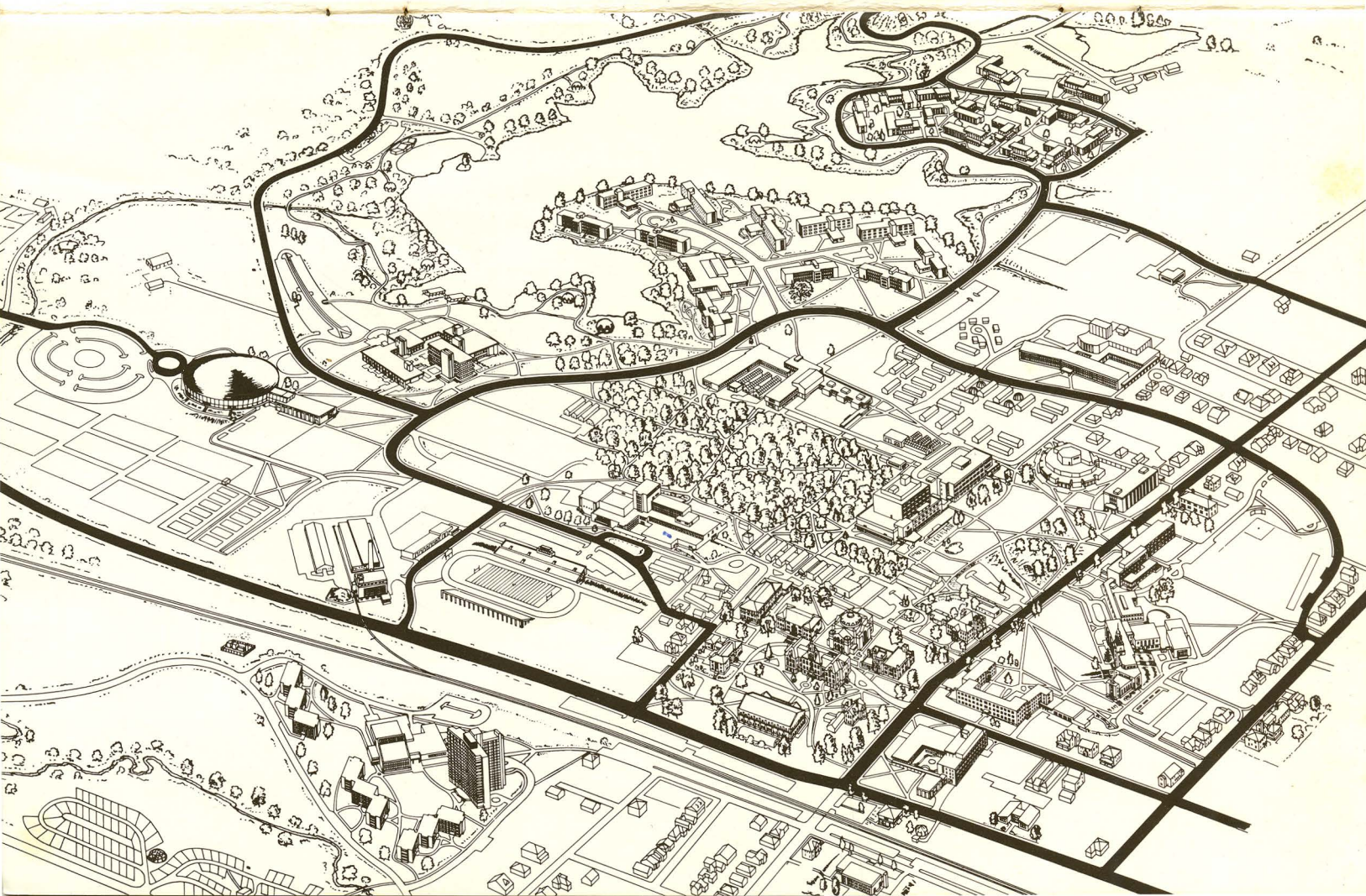
*In all lines of truth
wherever they may lead,
Showing how to think
rather than what to think,
Assisting the powers
of the mind
In their self-development;*

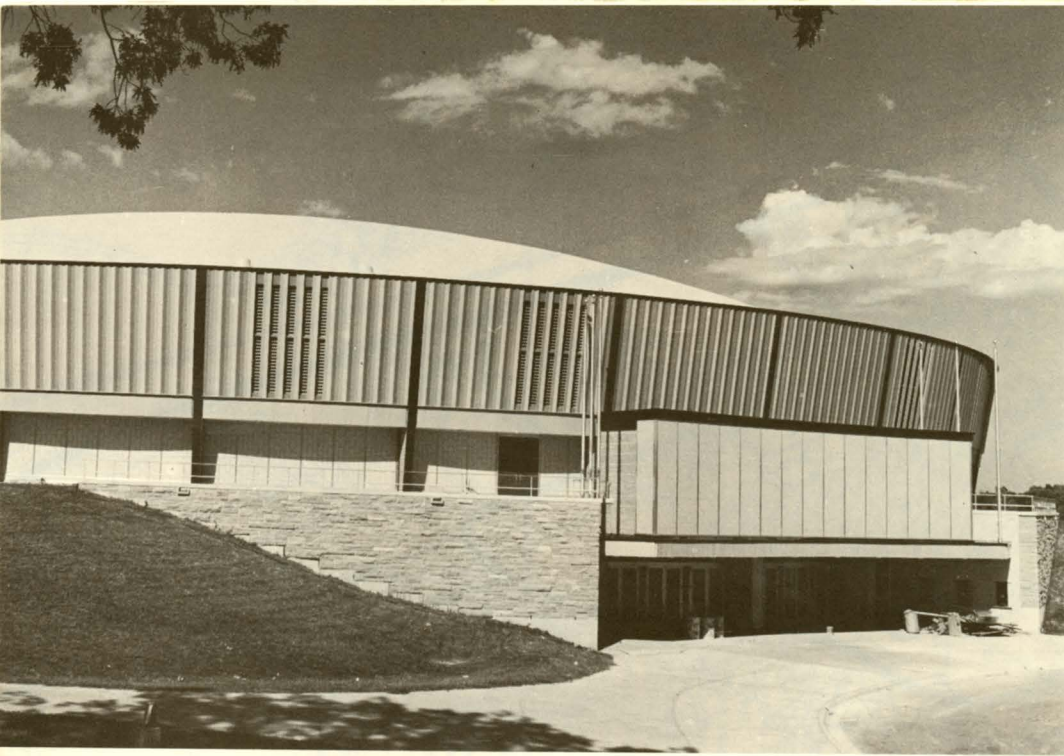
TO FORWARD IDEAS AND IDEALS

*In our democracy,
Inspiring respect for others
as for ourselves,
Ever promoting freedom
with responsibility;*

TO BECOME A CENTER OF ORDER AND LIGHT

*That knowledge may lead
to understanding
And understanding
to wisdom.*





THE S.I.U. ARENA

A \$4.5 million multi-purpose facility completed in September, 1964, the S.I.U. Arena serves both University and public needs. Architecturally, the building is half in the ground utilizing a low ring dome framed of steel. Maximum seating capacity is 10,014.



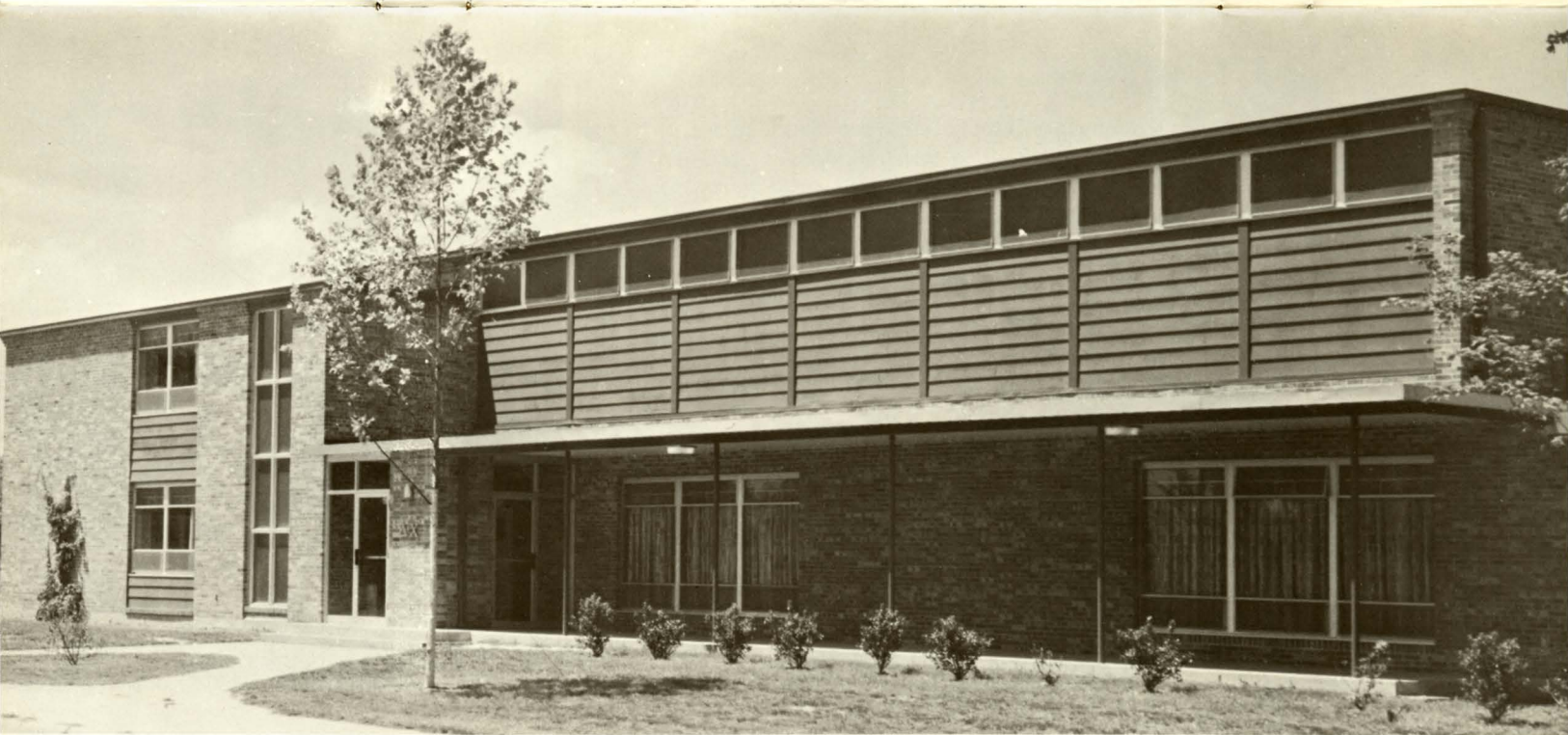
TECHNOLOGY COMPLEX

Professional Engineering, Engineering Science, Engineering Technology and Technological Education will operate from the 4 laboratories, 19 classrooms, 11 research rooms and 26 offices located here. A lecture hall seating 227 provides the capacity for instructing large groups. Total cost: \$5,092,397.



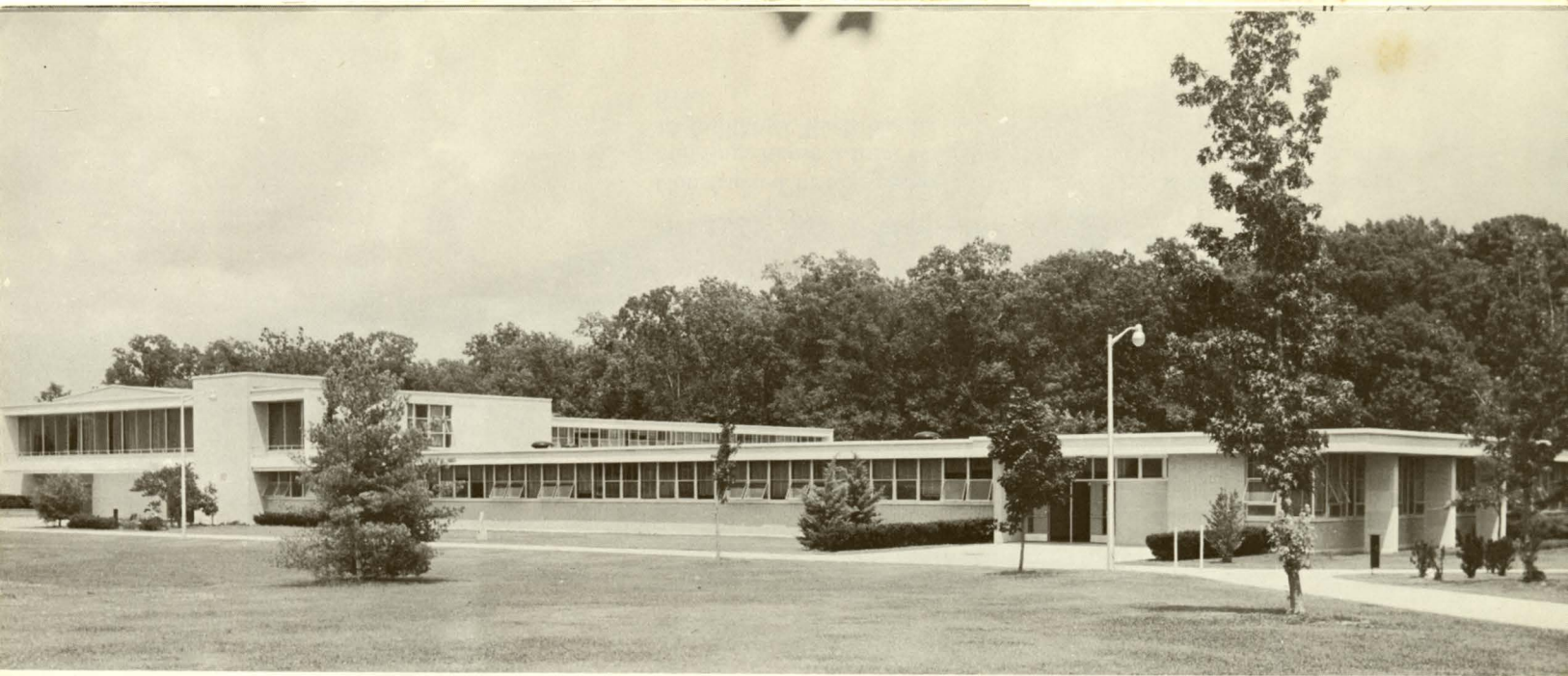
THOMPSON POINT

Each residence hall contains classroom space, a physical union of living and learning. The resident fellow program, which extends to all University housing, provides an apartment for each resident counselor and space on each floor for a resident fellow. The complex as a whole, houses 1347 students. The dining facilities at Lentz Hall seat 809 students. Total cost: \$9,111,861.



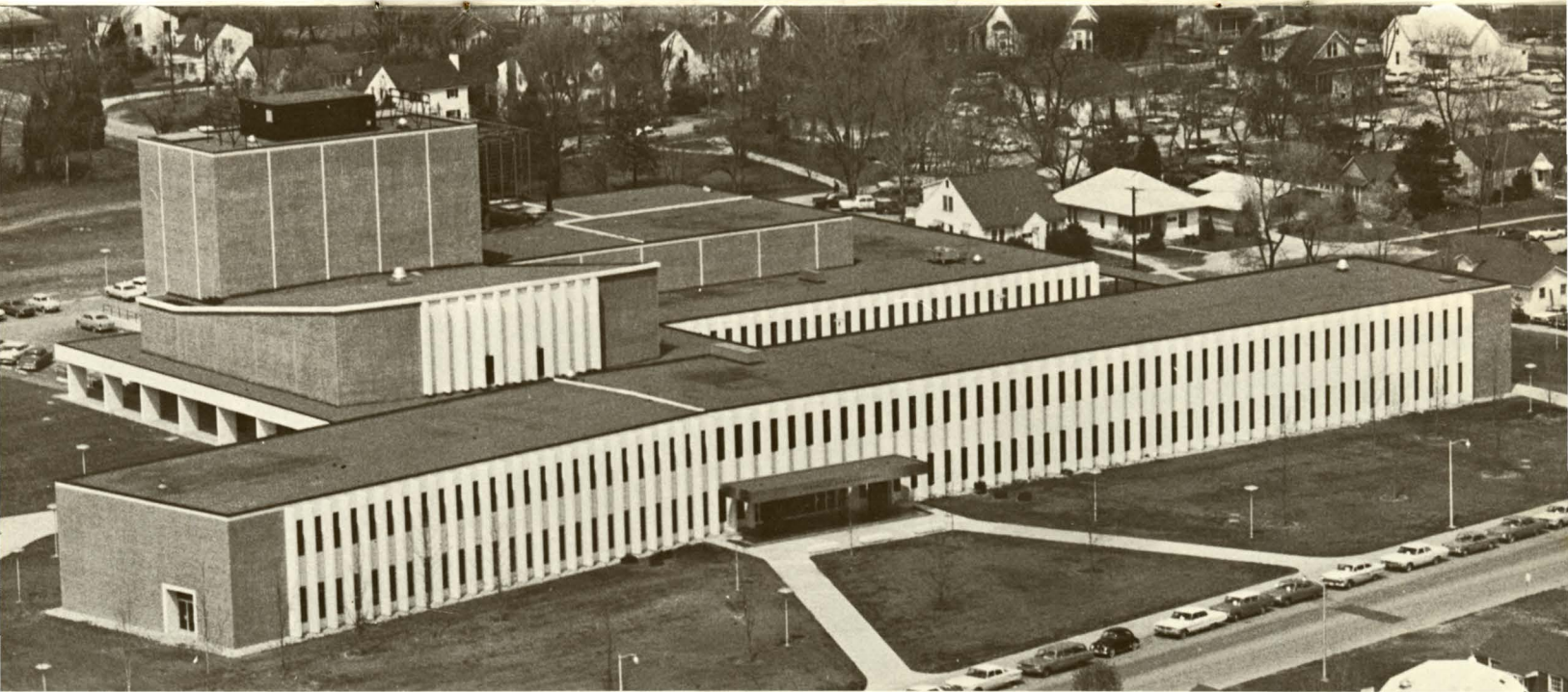
SMALL GROUP HOUSING

Constructed in two phases and completed in December, 1962, these buildings house a total of 732 students. The entire complex includes 15 buildings. Each has its own dining facilities. Total cost: \$4,321,-644.



SCHOOL OF AGRICULTURE

In addition to the School of Agriculture, offices for the United States Forestry Service, the Department of Geology and the Department of Geography are located here. Muckelroy Auditorium seats 245 persons and can be adapted for livestock shows. Adjacent to the building are experimental greenhouses. Total cost: \$2,163,-215.



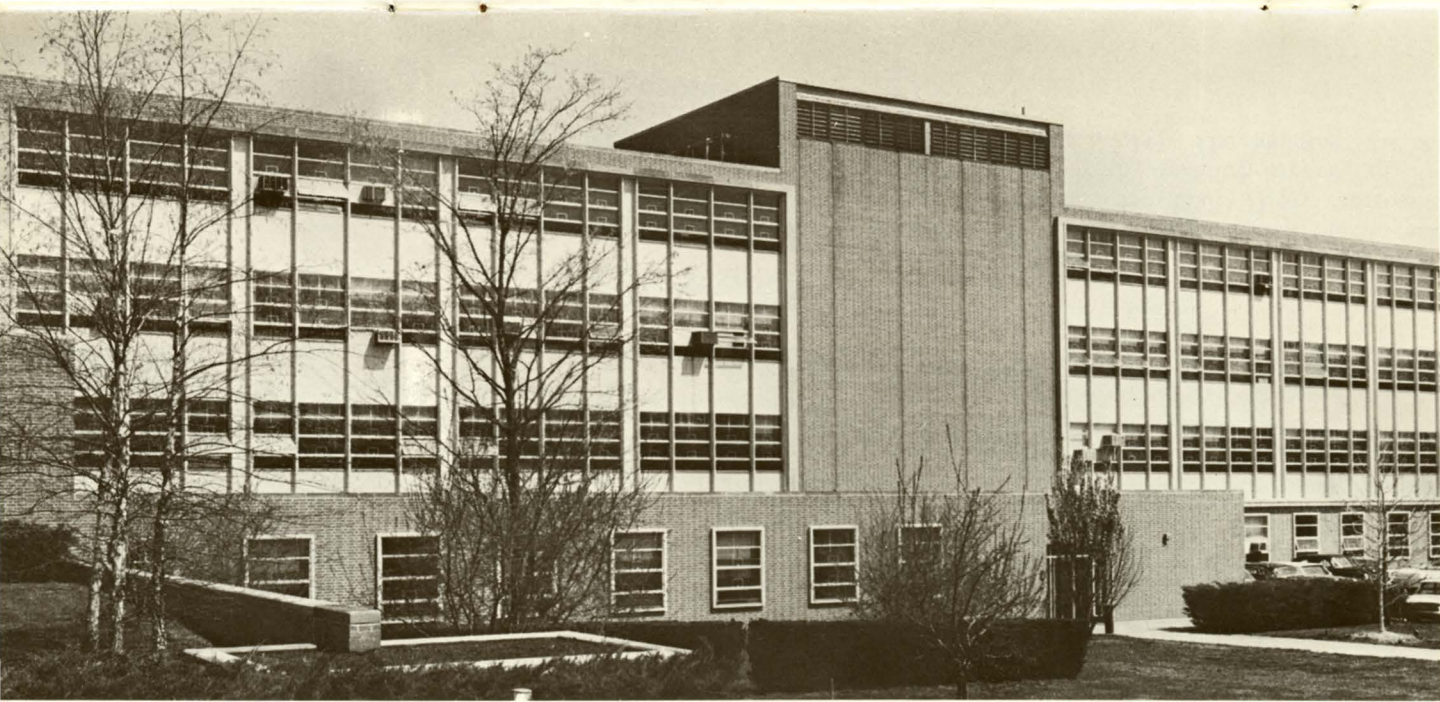
COMMUNICATIONS BUILDING

The Departments of Speech, Speech Correction, Theater, Radio and Television, Printing and Photography, and Journalism are located here. Completed in December, 1965, facilities include 43 offices, 23 classrooms, laboratory and research accommodations, and a theater seating 584. Total cost: \$4,800,000.



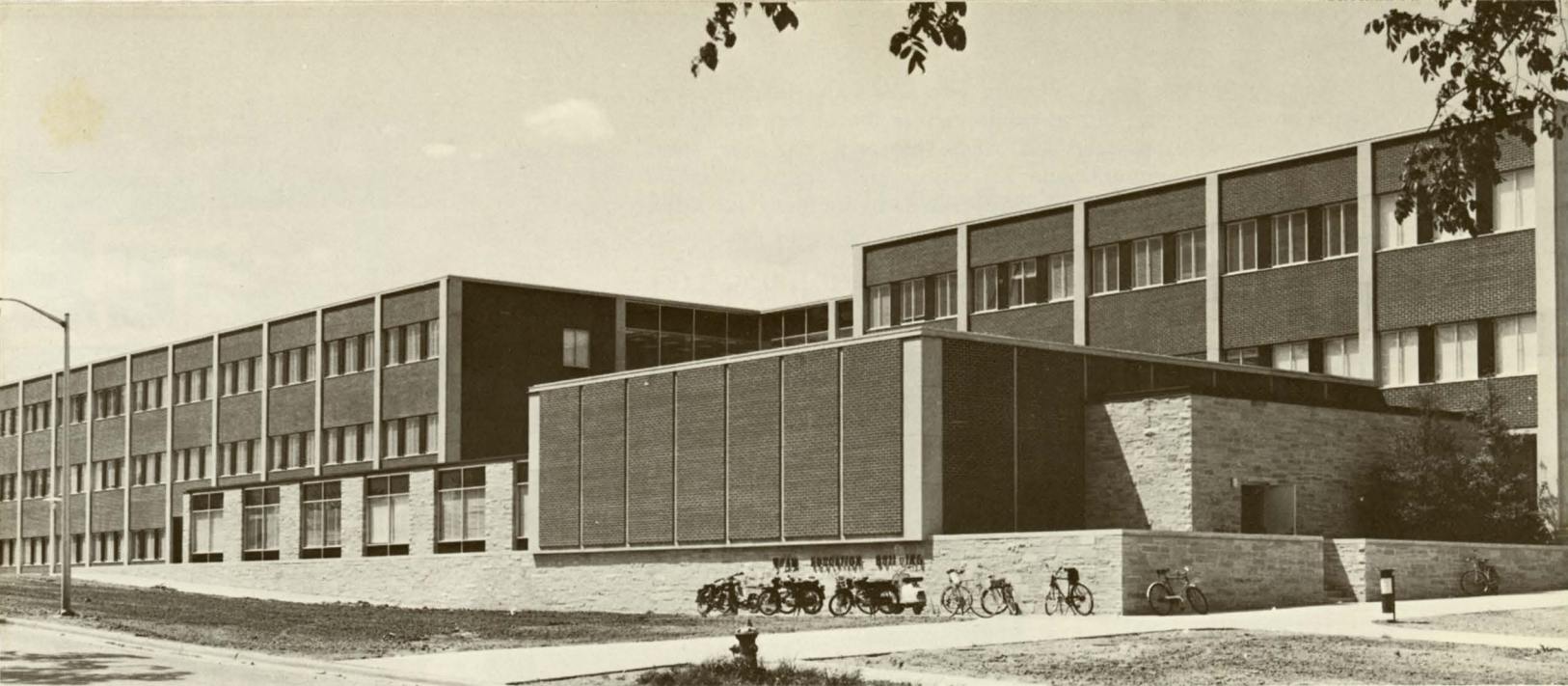
LAWSON HALL

Designed to make use of audio-visual techniques, this building is a mammoth teaching machine. At peak use, the building can serve 1,700 students, with film, slide, overhead and rear projection available in each teaching area. The General Classroom Building is attached to Lawson Hall by a covered passage. Total cost: \$1,700,000.



LIFE SCIENCE BUILDING

Completed in 1953, laboratory facilities include 23 private laboratories for graduate research directed by the teaching staff and 6 general teaching laboratories for undergraduates. French Auditorium seats 200. The only space not devoted to teaching and research are the administrative offices of the Departments of Botany, Microbiology, Physiology and Zoology. Total cost: \$1,859,801.



WHAM EDUCATION BUILDING

The College of Education, the Educational Research Bureau and the Reading Center are located in Wham Hall. Thirty classrooms, 92 offices and Davis Auditorium with a seating capacity of 304 were constructed at a cost of \$3,356,147. The building was occupied in September of 1963.



MORRIS LIBRARY

The largest open stack library in the state of Illinois, Morris Library contains 700,000 volumes and special departments for archives, rare books, and audio-visual services. When the interior is completed, the library will house approximately one million volumes and permit study space for 4,000 students. Total cost: \$6,300,180.



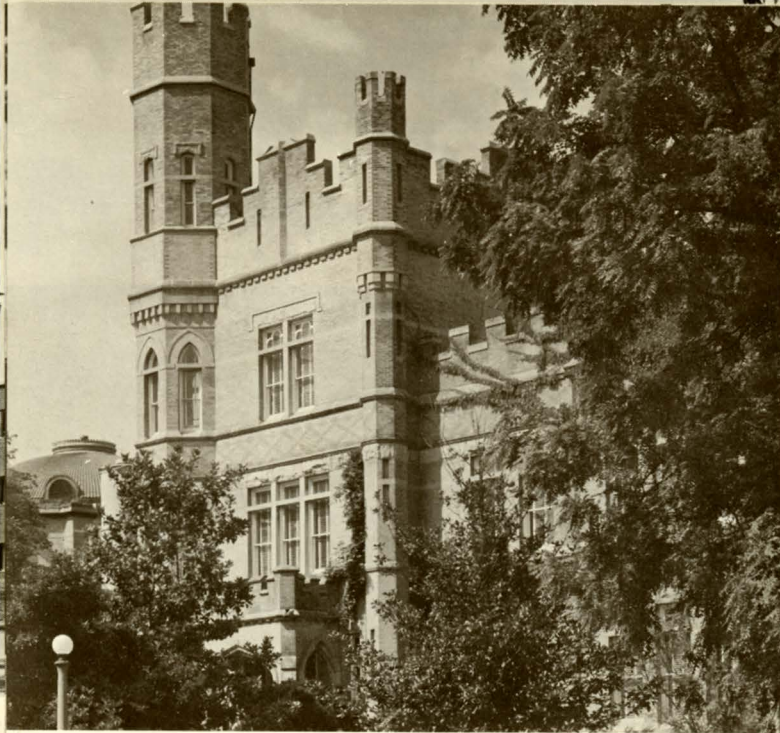
PULLIAM HALL

With special facilities for student observation and training, modern laboratories for high school physics, chemistry and biology, Pulliam Hall enrolls students from the kindergarten-primary to the twelfth grade. Facilities include shops for manual arts, applied arts, crafts and fine arts, a gymnasium and a swimming pool.



WOODY HALL

Named for former Dean Lucy B. Woody, the residence hall for women houses 422 students. The adjacent dining hall seats 276. The building was completed in September, 1953. Total cost: \$2,033,518.



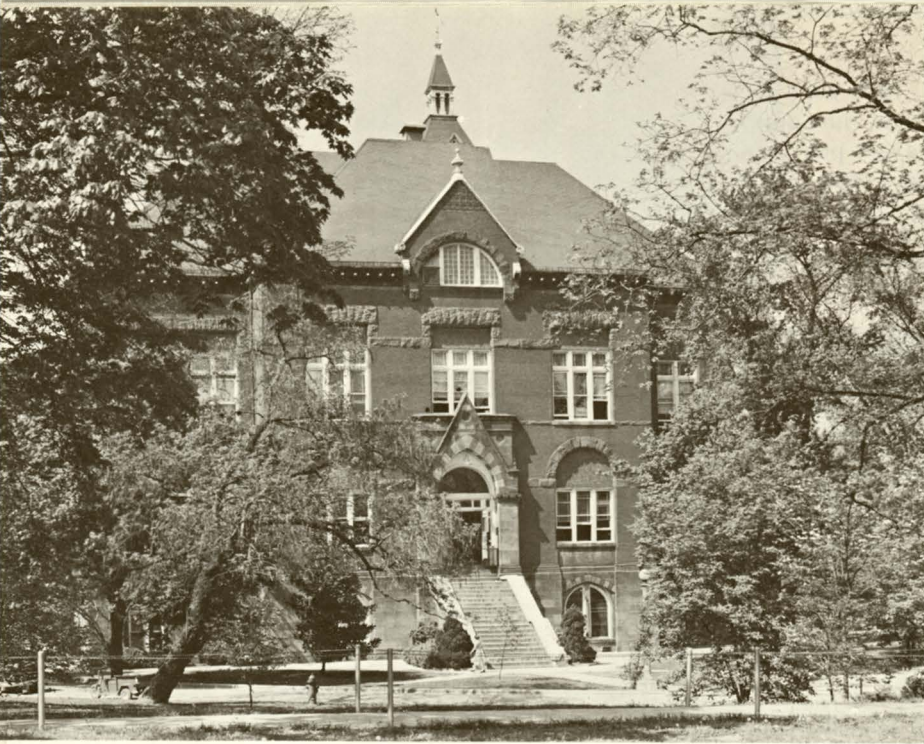
ALTGELD HALL

Dedicated as the "Old Science Building" in 1896, the building presently houses the Department of Music and the University Museum. The structure has been remodeled to provide classrooms, practice rooms and office space. Original cost: \$40,000.



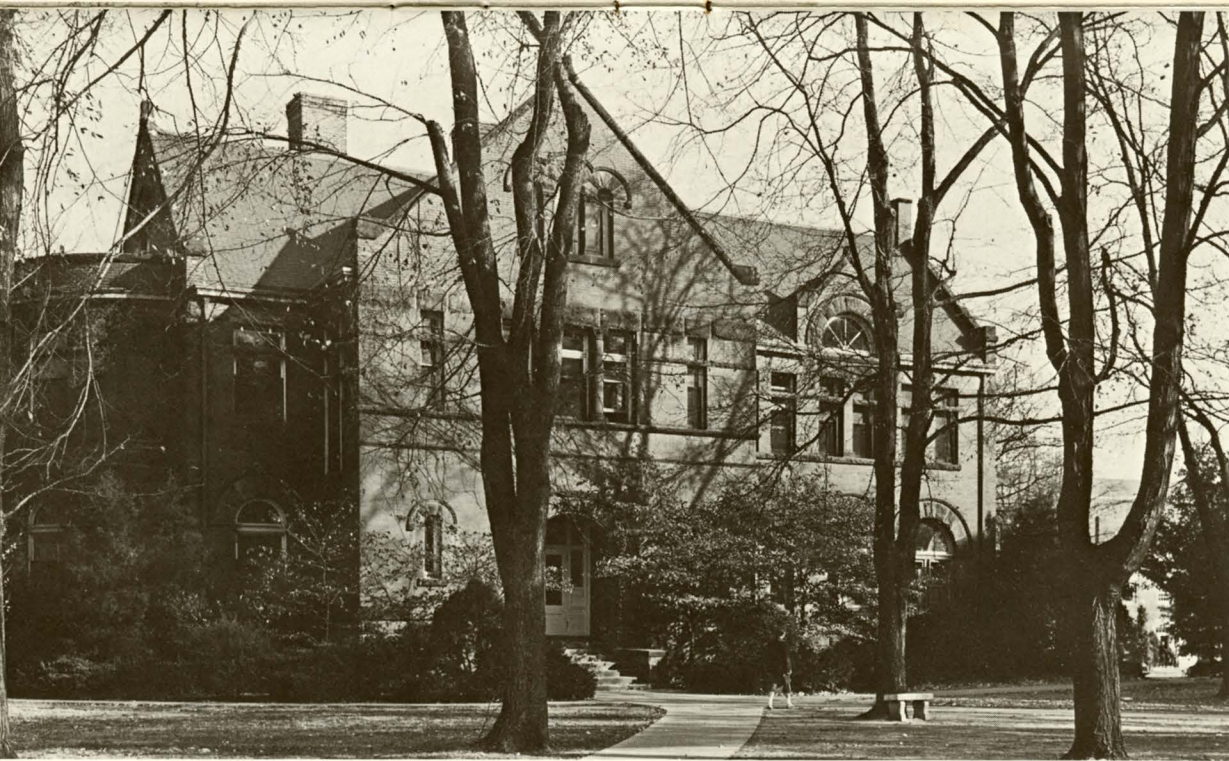
SHRYOCK AUDITORIUM

Dedicated in 1918, the auditorium serves as the cultural center of the campus and is in constant use for concerts, lectures and other University and area sponsored events. Named after the University's third president, the building also provides office space for the School of Fine Arts.



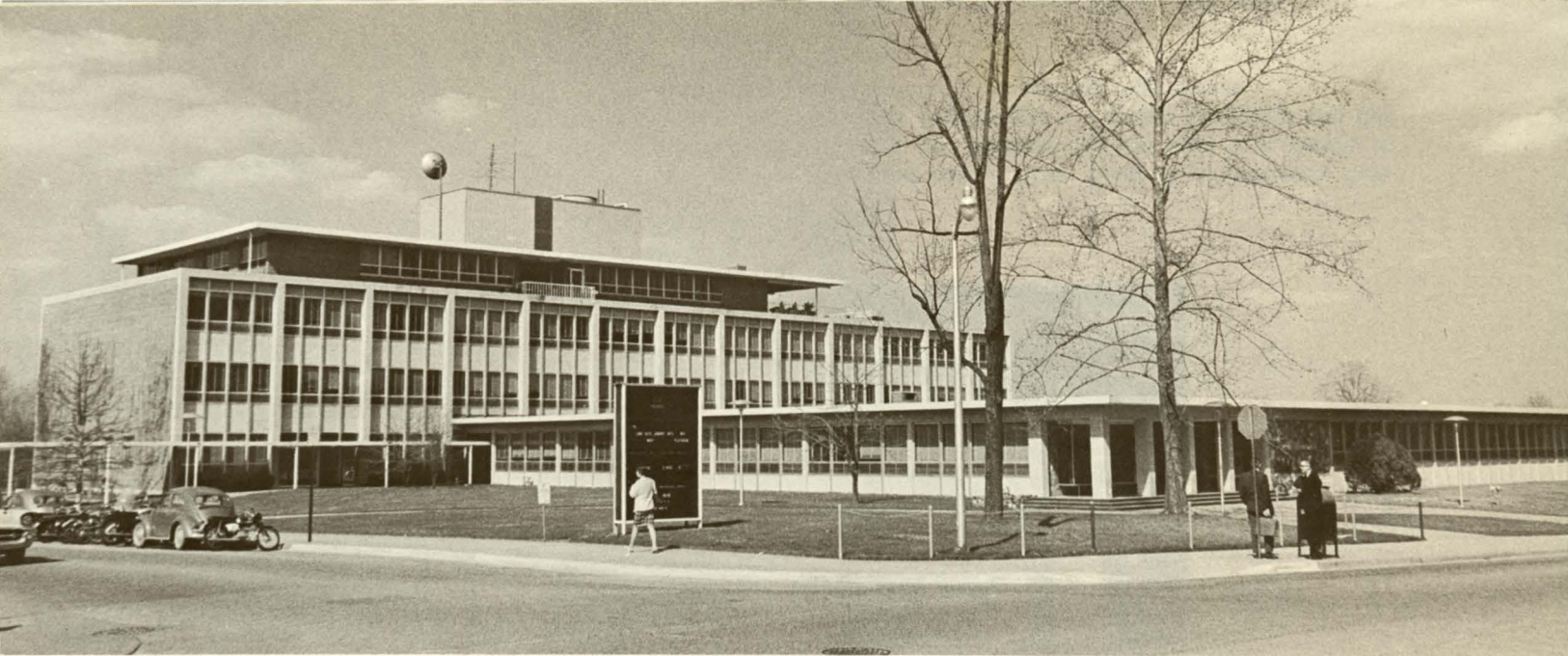
OLD MAIN

Dedicated on July 1, 1874, old Main was completely destroyed by fire in November, 1883. The present building was completed in February 1887. The building is currently used for general classroom purposes and houses the Department of History.



WHEELER HALL

Dedicated in 1904 and named after Judge S. P. Wheeler, then president of the Board, the building was first used as a library. It is presently used by the Department of Foreign Languages and the Air Force Reserve Officers Training Corps detachment.



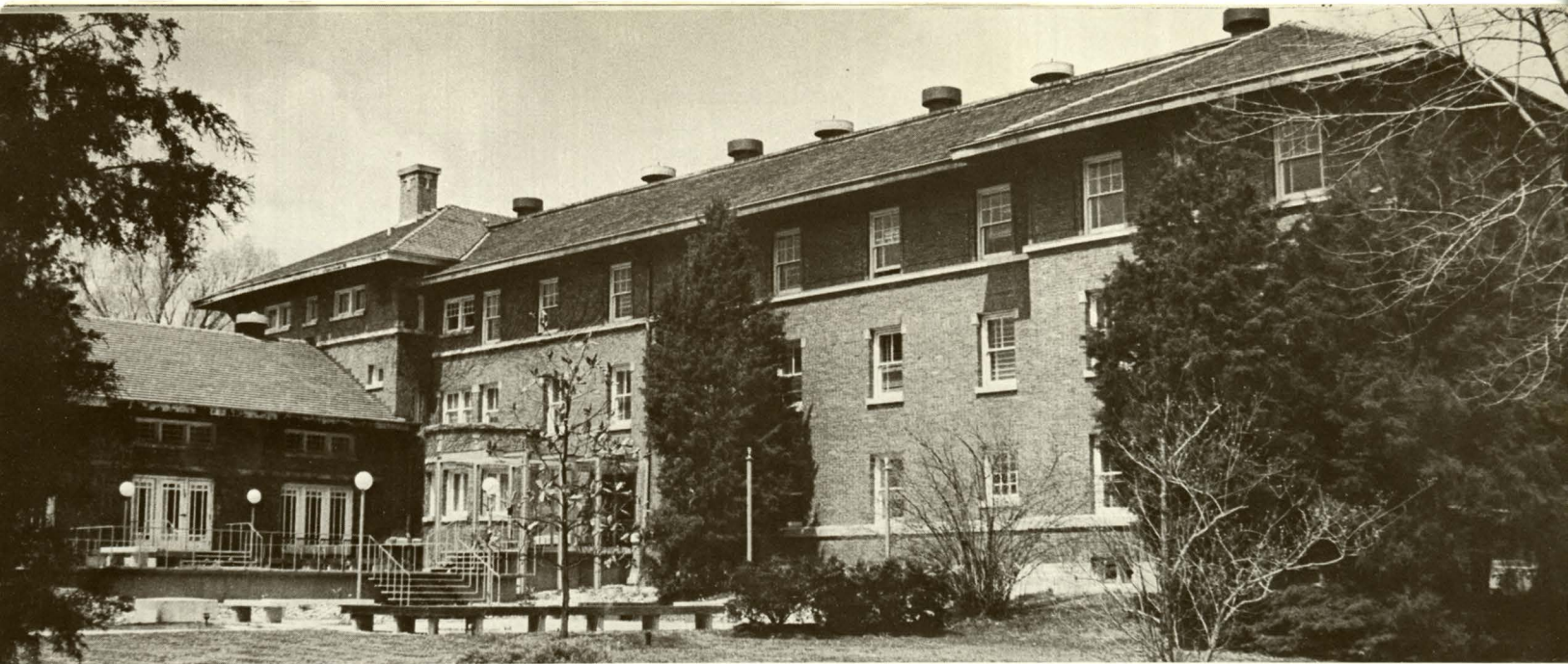
HOME ECONOMICS BUILDING

This building provides office space for the Departments of Anthropology, Philosophy and Foreign Language as well as housing the School of Home Economics. Completed in October, 1959, facilities include 29 offices, 6 classrooms, 16 laboratories, 3 research rooms, an auditorium seating 50 and the Mitchell Art Gallery. Total cost: \$3,090,405.



UNIVERSITY PARK RESIDENCE HALLS

Completed in September, 1965, the complex consists of a sixteen-story high-rise, three triads and a commons building. The tower provides space for 816 women. Each unit in the triads houses 114 men with 342 students in each triad. The total student population here is 1842 men and women. Trueblood Commons has three dining rooms seating a total of 900 students. Total cost: \$11,646,816.



ANTHONY HALL

Built as the University's first residence hall, and originally occupied by 75 women, Anthony Hall was completed in 1913. In 1952, it was converted to a men's residence and used as such until 1957. Currently, it houses various institutional services including Community Development, International Service, Extension Division, Information Service, SIU Foundation, and Alumni Services.



ALLYN BUILDING

Named in honor of the University's first president, it was dedicated in 1908 as the University's training school. Presently the Allyn Building holds the offices and studios of the Department of Art.



PARKINSON BUILDING

Completed in 1928, the Departments of Chemistry and Physics moved into Parkinson from Altgeld Hall. These departments occupy the building today. Adjacent is Browne Auditorium which seats 315 and which was completed in 1959.



UNIVERSITY CENTER

The center provides hospitality and recreation for University visitors and students. University dining facilities, the bookstore, a multi-purpose banquet hall and ballroom, recreation rooms, bowling lanes, and television lounges are located here. The main dining rooms share a patio which borders on Thompson Woods. Financed by student funds, the University Center cost \$4,500,000 and was opened in June, 1961.



PHYSICAL SCIENCE BUILDING

Stage I of the Physical Science Building will be completed in December of 1966. Dedicated to teaching and research in the physical sciences, the building contains 30 laboratories, 14 classrooms and 13 offices. The estimated cost of construction is \$4,100,000.

Communications Media Services Division
Southern Illinois University
Carbondale Campus

