

1-1951

# A Descriptive Directory of Southern Illinois Newspapers Representing Thirty-One Counties

Donald R. Grubb

Southern Illinois University Carbondale

Follow this and additional works at: [http://opensiuc.lib.siu.edu/ua\\_docs](http://opensiuc.lib.siu.edu/ua_docs)

This directory provides statistics on numerous newspapers in towns throughout 31 Southern Illinois counties in July 1951. The information was compiled and edited by Donald R. Grubb of Southern Illinois University's Department of Journalism. The information for each newspaper includes: year of establishment, publisher, publishing dates, circulation and distribution, town population, deadlines, rates, staff, services, newspapers dimensions, plant equipment, and location and mailing information. The directory provides insight into the characteristics of small town newspapers in the mid-20<sup>th</sup> century.

---

## Recommended Citation

Grubb, Donald R. and , . "A Descriptive Directory of Southern Illinois Newspapers Representing Thirty-One Counties." (Jan 1951).

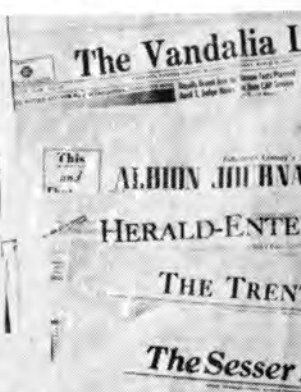


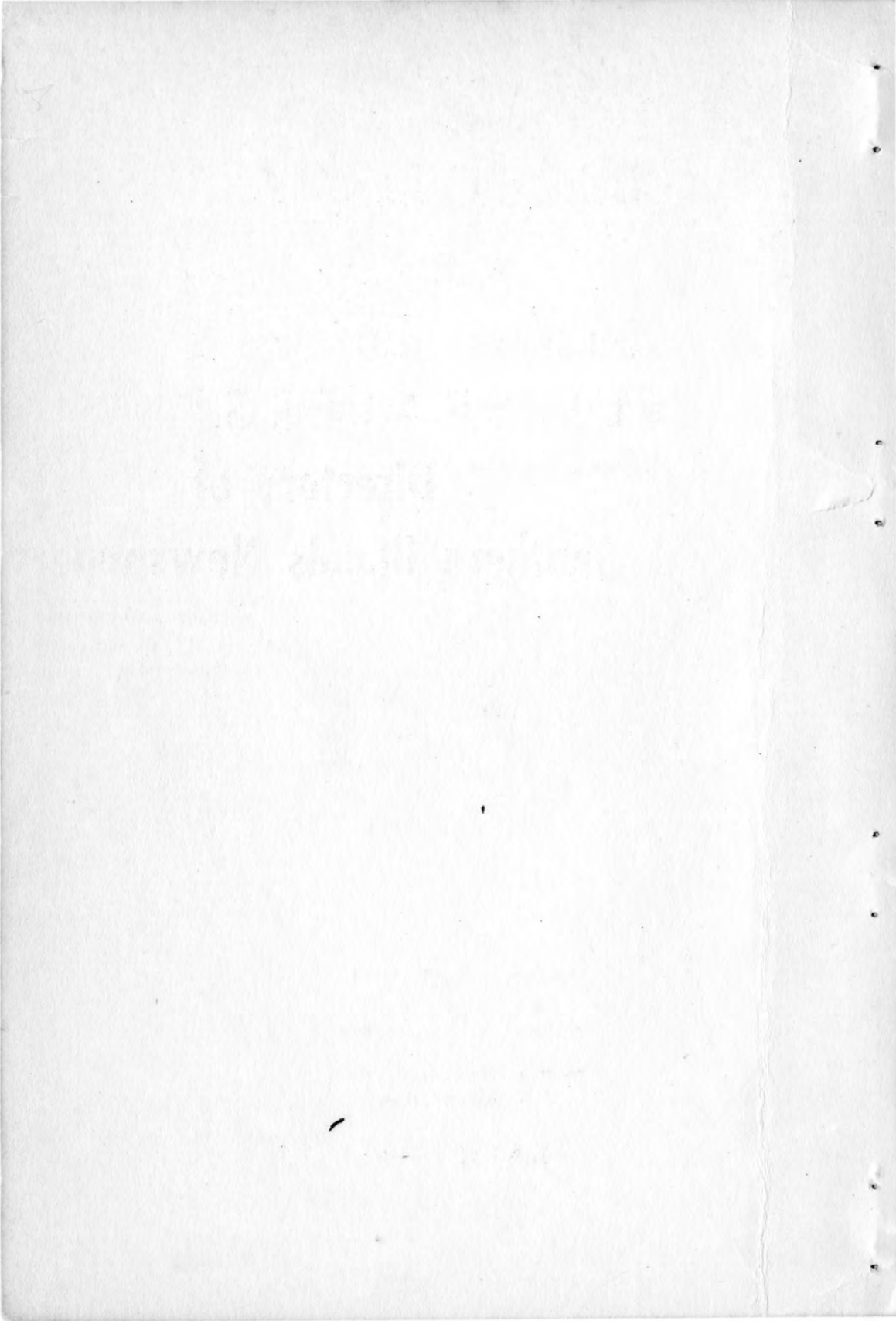
# Directory of Southern Illinois Newspapers

A Descriptive

*on Route*

Published by  
Southern Illinois University  
Carbondale





A Descriptive  
**DIRECTORY**  
of  
Southern Illinois  
**NEWSPAPERS**  
Representing Thirty-One Counties



Compiled and Edited by  
**Donald R. Grubb**  
Department of Journalism

Southern Illinois University  
Carbondale, Illinois

**JANUARY 1951**

(Printed by Authority of the State of Illinois)

A Descriptive  
DIRECTORY  
of  
Southern Illinois  
NEWSPAPERS  
Representing Thirty-One Counties



Compiled and Edited by  
Gerald R. Crabb  
Department of Journalism  
Southern Illinois University  
Carbondale, Illinois

JANUARY 1951

(Printed by authority of the State of Illinois)

## **The Purpose of This DIRECTORY**

is to provide facts about 124 weekly and daily newspapers being published in the 31 southern-most counties of Illinois, and to describe editorial, business, and mechanical characteristics of these publications.

This source is aimed to serve not only newspaper publishers and editors in this area but also students of journalism, librarians, educators, advertisers, civic enterprises and governmental agencies. This **Directory**, which surveys all the known printed newspapers in Southern Illinois, is unique in that it contains information (such as plant equipment, names of staff members and mailing data) not found in any existing directories.

Copies of this **Directory** may be obtained free of charge by writing Donald R. Grubb, Department of Journalism, Southern Illinois University, Carbondale, Illinois.

## **Acknowledgment**

is hereby given to the editors and publishers of Southern Illinois newspapers who contributed information so generously for use in this **Directory**.

**A Descriptive Directory of Weekly and Daily Newspapers of Southern Illinois** was compiled as an organized research project financed by university funds and represents research over a period of more than a year.

# General Information Concerning The Use of This Directory.

**THIRTY-ONE SOUTHERN ILLINOIS COUNTIES** are included in this Directory. These counties represent the major enrollment-supporting territory for Southern Illinois University.

**COUNTIES INCLUDED ARE.** Alexander, Bond, Clay, Clinton, Edwards, Fayette, Franklin, Gallatin, Hamilton, Hardin, Jackson, Jefferson, Johnson, Lawrence, Madison, Marion, Massac, Monroe, Perry, Pope, Pulaski, Randolph, Richland, Saline, St. Clair, Union, Wabash, Washington, Wayne, Williamson, and White.

**OFFICIAL 1950 CENSUS FIGURES** were not used in this Directory since all returns were not available when this book went to press. All population figures have been determined by the latest road map information, corporate limits signs, and estimates from publishers and editors.

**QUICKEST MAILING ROUTES** for the most part are estimates made by editors and publishers in the localities represented and may be subject to change as more expedient routes are determined.

**CIRCULATION FIGURES IN THIS DIRECTORY** represent **press run figures** and are so listed unless otherwise designated. Press run figures have been used in an attempt to record a more detailed description of newspaper operations in this area.

**ALL AREAS OF DISTRIBUTIONS** have been defined by editors and publishers herein as being those areas of **heaviest concentrated circulation**. Detailed zones of distribution may be obtained upon request from the Department of Journalism, Southern Illinois University.

**OMISSION OF STAFF BREAKDOWNS** and names of staff members has been necessary in some cases. Cases in point are: when the information received is indefinite, contradictory, or otherwise unsatisfactory; when publishers themselves have requested the omission.

**MULTIPLE DUTIES OF MANY** staff members listed herein frequently prevent **total staff** figures from agreeing with **staff break-down** totals.

**PUBLICATIONS EXCLUDED.** In accordance with pre-determined limitations publications not directed to or required by the general advertiser or the public have been omitted from this Directory. Coming under this classification are papers issued by business firms primarily for the promotion of their own interests, i. e., house organs; school publications, church papers, and institutional publications, unless these have influence outside the particular institution by which they are published.

**ALL NEWSPAPERS ARE INDEXED** by towns in alphabetical order. In each city and town newspapers are listed in alphabetical order by their **distinctive** names. Example: **East St. Louis Messenger** will precede **East St. Louis Reporter**.

**AN ALPHABETICAL BREAKDOWN** of newspapers by weeklies, dailies, towns and counties is listed in the back of this Directory.

**DISPLAY ADVERTISING RATES LISTED** are column inch rates and classified rates are designated by line or word charge.

June 18, 1940 - date

ALBION

## Albion Journal-Register

Albion Population: 1900 Phone 98  
Established: 1869 Edwards County Independent-Republican  
Publisher: L. E. Shoemaker Editor John D. Lopp  
Privately owned Published Wednesday  
Circulation: (Press Run Figures): 2300  
Area of Distribution. Greater Edwards county; eastern portion Wayne county

### Deadlines:

Copy deadline for news: Wednesday noon  
Advertisement deadline: Tuesday noon  
Newspaper is mailed: Thursday morning

### Rates:

Classified advertising: 2c per word  
Display advertising per inch: 49c  
Subscription per year: \$2 and \$3.00

### Staff:

Editorial: 2  
Business: combined  
Backshop: 3  
Total: 5

### Names of Staff Members:

Sports writer: Lyndon Wharton  
Advertising Mgr.: B. M. Moreland  
Back shop foreman: E. L. McKibben  
Business Mgr.: L. E. Shoemaker  
Regional correspondents: 5 (Rate of payment 5c per line)  
Photographs are supplied from no regular source

### Services:

No non-staff news services used  
Mat service  
National advertising

### Dimensions:

Page dimensions in inches: 140  
Width of column (in picas): 12  
Number of columns per page: 7  
Av. no. of pages per issue: 10  
Depth of column; agate lines 276

### Plant Equipment:

Babcock newspaper press  
Three platen job presses  
One linotype

### Location and Mailing Information:

Albion is located 102 miles northeast of Carbondale on State Highway 13.  
Best mailing route is provided by I. C. to Ashley, Southern to Albion.



Mar. 9, 1836 - date  
(several title & frequency changes)

ALTON

## Alton Evening Telegraph

Alton Population: 35,000 Ph. 3-6641  
Established 1836 Madison County Independent  
Publisher: Alton Telegraph Printing Co. Inc. Editor: Paul B. Cousley  
Type of Ownership: Corporation **Pub. Daily except Sunday**  
Circulation (press run figures) 27,000  
Area of Distribution: Northern half Madison; southern halves of Macoupin and Jersey counties.

### Deadlines:

Copy deadline for news: 9:00, day of pub.  
Advertisement deadline: 12:00 noon, day before pub.  
Newspaper is mailed: Daily 3:30 p.m.

### Rates:

Classified advertising: 3c per word  
Display advertising: \$1.40 per inch  
Subscription per year: \$6 and \$9.00

### Staff:

Editorial: 18  
Backshop: 37  
Business: 20  
Mail Room & Maintenance: 20  
Total: 95

### Names of Staff Members:

Sports writer: John Focht  
Advertising Mgr. Lee Sharkey  
Business Mgr.: Henry McAdams

Regional correspondents: 32 (fixed salary rate of payment)  
Photographs are supplied by two full-time staff photographers

### Services:

Associated Press wire service  
AP wire photo  
Mat service  
National advertising

### Dimensions:

Page dimensions (in inches): 16x22  
Number of col. per page: 8  
Width of column (in picas): 12  
Depth of col. (in agate lines): 294  
Av. no. of pages per issue: 20

### Plant Equipment:

Type of newspaper press: Hoe, 5 units, Vertical  
One platen job press  
Engraving plant  
Ludlow, Elrod, Addressograph, press-type camera, photo processing equipment, mimeograph, bookbinding equipment.

### Location and Mailing Information:

Alton is located 125 miles northwest of Carbondale on U. S. Highway 67 and is served by the GM&O; NYC; and IT railroads. Quickest mailing service between the two cities is by regular U. S. Mail.

June 5, 1925 - date

**ANNA-JONESBORO**

**The Gazette-Democrat**

Anna-Jonesboro  
Established 1849

Population 7,000  
Union County

Ph. 128 & 231  
Dem.

Publisher: H. Clay Reppert  
Privately Owned

Editor: H. Clay Reppert  
**Published Thursday**

Circulation: (Press run figures) 4,000

Area of Distribution: Greater Union county; northern-most portions of Alexander and Pulaski counties; western section of Johnson county.

**Deadlines:**

Copy deadline for news: Wednesday 5 p.m.  
Advertisement deadline: Wednesday noon  
Newspaper is mailed: By noon each Thursday

**Rates:**

Classified advertising: 10c per line  
Display advertising per inch: Open 63c  
Subscription per year: \$3.00 in county—\$3.50 outside

**Staff:**

Editorial: 3  
Business: 1  
Backshop: 7  
Total: 11

**Names of Staff Members:**

Sports writer: Dorris L. Hankla  
Backshop Foreman: John Vincenzi

Regional correspondents: 20 (No standard rate of payment)  
Photographs are supplied by commercial photographers.

**Services:**

No non-staff news services used  
Mat service  
National advertising

**Dimensions:**

Page dimensions: 160 inches (over all)  
Number of columns per page: 8  
Width of column (in picas): 12  
Depth of column (in agate lines) 280  
Av. No. of pages per issue: 20

**Plant Equipment:**

Duplex newspaper press  
Seven platen job presses  
One offset job press  
Two linotypes  
One Elrod, Addressograph, One Ludlow, Bookbinding equipment.

**Location and Mailing Information:**

Anna-Jonesboro is located 20 miles south of Carbondale on U. S. Highway 51 and is served by the Illinois Central and G.M.&O. railroads. The I. C. provides the quickest service between the two cities.

Jonesboro Gazette<sup>5</sup>  
12 Dec 1913 — 20 Oct 1939 [ceased  
pub.]

ASHLEY

## The Washington County Gazette

Ashley Population 1100 Ph. 36  
Established: 1876 Washington County Republican  
Publisher: F. E. O'Bryant Editor: F. E. O'Bryant  
Privately owned **Published Thursday**  
Circulation (press run figures): 667  
Area of Distribution: Eastern Washington county and portions of Jefferson and Perry counties.

### Deadlines:

Copy deadline for news: Wednesday p.m.  
Advertisement Deadline: Wednesday p.m.  
Newspaper is mailed: Thursday

### Rates:

Classified advertising rates: 2c per word  
Display advertising rates: 35c per inch  
Subscription per year: \$1.50

### Staff:

Editorial: 1  
Business Staff: 1  
Backshop: 1  
Total: 3  
Regional correspondents: None  
Photographs are supplied by no regular method

### Services:

No non-Staff services used  
Mat Service  
National advertising

### Dimensions:

Number of columns per page: 6  
Width of column (in picas): 13  
Depth of column (in agate lines): 276  
Av. no. pages per issue: 8

### Plant Equipment:

Cranston Newspaper press  
Job Presses: 1 platen; 1 cylinder  
One linotype

### Location and Mailing Information:

Ashley is located 45 miles north of Carbondale on U. S. Highway 51 and is served by the I. C. & L. & N. railroads. The I. C. provides the quickest mailing service between the two cities.

Dec. 21, 1917 - Dec. 1, 1922  
Jan. 2, 1925 - date

AVA

## The Ava Citizen

Ava Population 800 Ph. 3401  
Established: 1898 Jackson County Republican  
Publisher: Leonard M. Johnson Editor: Leonard M. Johnson  
Privately owned **Published Friday**  
Circulation: (Press run figures): 825  
Area of Distribution: Northwest Jackson county and portions of Perry and Randolph counties.

### Deadlines:

Copy deadline for news: Thursday morning  
Advertisement deadline: Wednesday noon  
Newspaper is mailed: Local Thursday, out of town Friday

### Rates:

Classified advertising rates: 10c per line  
Display advertising rates: 35c per inch  
Subscription per year: \$2.00

### Staff:

Editorial: 2  
Business: combined  
Back shop: 2  
Total: 4

### Names of Staff Members:

Backshop Foreman: Lavern Egbert  
Business Mgr.: Leonard Johnson

Regional correspondents: 3 (No standard rate of payment)  
Photographs are supplied by free lance photographers

### Services:

No non-staff news services used  
Mat service  
National advertising

### Dimensions:

Page dimensions in inches: 16x5 col.  
Number of columns per page: 5  
Width of column (in picas): 12  
Depth of column (in agate lines): 230  
Average number pages per issue: 8

### Plant Equipment:

Babcock Standard  
Job presses: 2 platen; 1 cylinder  
Two linotypes

### Location and Mailing Information:

Ava is located 26 miles northwest of Carbondale on State Highway 43 and is served by the G.M.&O. railroad. Rail connections with G.M.&O. provides the quickest mailing service between the two cities.

Jan, 1956 - date

**BELLEVILLE**

## **Belleville Daily Advocate**

Belleville Population: 35,000 Ph. 45  
Established: 1839 St. Clair County Republican  
Publisher: Cyril A. Arnold Editor: Cyril A. Arnold  
Corporation **Pub. Daily Monday through Saturday**  
Circulation: (press run figures): 11,000  
Area of Distribution: Greater St. Clair, western portions of Clinton and Washington counties.

### **Deadlines:**

Advertisement deadline:  $\frac{1}{4}$  page and larger day before; smaller 9 a.m.  
Copy deadline for news: 2 p. m. day of publication  
Newspaper is mailed: 4:45 Monday through Saturday

### **Rates:**

Classified advertising rates: 1-day rate 25c per line minimum  
Display advertising rates: 90c per inch  
Subscription per year: \$12 by carrier; \$7.00 by mail

### **Staff:**

Editorial: 6  
Utility and Engraving: 3  
Backshop: 17  
Business: 14  
Total: 40

### **Names of Staff Members:**

Sports writer: G. W. Killinger  
Advertising Mgr.: Alfred G. Henninger  
Back shop foreman: Emil A. Schaab  
Business Mgr.: Cyril A. Arnold

Regional correspondents: 30 (Rate of payment 10c per col. inch)  
Photographs are supplied by full-time staff photographer.

### **Dimensions:**

Page dimensions in inches:  $17\frac{1}{4}$  x  $22\frac{3}{4}$   
Number of columns per page: 8  
Width of column (in picas): 12  
Depth of column (in agate lines): 294  
Av. No. pages per issue: 15

### **Services:**

Associated Press  
Mat service  
National advertising

### **Plant Equipment:**

Hoe newspaper press  
Two platen; one cylinder job presses  
Engraving plant  
Seven linotypes  
Elrod; Addressograph; press-type camera; photo processing equipment.

### **Location and Mailing Information:**

Belleville is located 82 miles northwest of Carbondale on State Highway 13 and is served by the I. C., L. & N., and Southern railroads. The I. C. provides the quickest mailing service between the two cities.

Jan., 1956 - date

**BELLEVILLE**

## **Belleville News-Democrat**

Belleville Population: 35,000 Ph. 1000  
Established: 1855 St. Clair Ind.-Dem.  
Publisher: Robert L. Kern Editor: Robert L. Kern  
Privately owned-joint ownership **Pub. Daily except Sunday**  
Circulation (press run figures): 10,800  
Area of Distribution: Greater St. Clair county; small portions of Monroe, Clinton and Washington counties.

### **Deadlines:**

Copy deadline for news: 1:30 p.m.  
Advertisement deadline: 5:00 p.m. day prior to publication  
Newspaper is mailed daily at 3:00 p.m.

### **Rates:**

Classified advertising rate: 2c per word, min 50c  
Display advertising rates: flat line rate 7c; political 1.25 per inch  
Subscription per year: Mail, \$7; carrier, \$12, (25c weekly)  
No regional correspondents  
Photographs are supplied by full-time photographer

### **Services:**

United Press  
Central Press  
Acme Telephoto

### **Dimensions:**

Page dimensions in inches: 16½ x 21¼  
Number of columns per page: 8  
Width of column (in picas): 11½  
Depth of column (in agate lines): 295  
Average number pages per issue: 16-18

### **Plant Equipment:**

24-page Duplex Tubular newspaper press  
Photo-engraving plant (Fairchild)  
Six linotypes, One Intertype  
Ludlow, Elrod, Addressograph, press-type cameras, photo processing equipment, photo engraving equipment.

### **Location and Mailing Information:**

Belleville is located 82 miles northwest of Carbondale on State Highway 13 and is served by the I. C., L & N, and Southern railroads. The I. C. provides the quickest mailing service between the two cities.

June 6, 1924 - Feb. 6, 1935  
Apr. 1943 - Apr. 23, 1947  
May 12, 15, 1947  
May 29, 1956 - date

**BENTON**

## **Benton Evening News**

Benton Population 7,874 Ph. 65 or 14  
Established: 1922 Franklin county Ind.  
Publisher: Benton Evening News Co. Editor: James Choisser  
Corporation **Published daily except Sunday**  
Circulation (press run figures): 5207, paid 5003  
Area of Distribution: Greater Franklin county

### **Deadlines:**

Copy deadline for news: 12 noon  
Advertisement deadline: 8 a.m.  
Newspaper is mailed: 2 to 4 p.m. daily

### **Rates:**

Classified advertising: 3c per word  
Display advertising per inch: 50c  
Subscription per year: \$4.00

### **Staff:**

Editorial: 5  
Backshop: 11  
Business staff: 2  
Total: 18  
Regional correspondents: 12 (no standard rate of payment)  
Photographs are supplied by photographer-newsmen combination

### **Names of Staff Members:**

Sports writer: Richard Jackson  
Advertising Mgr.: Steve Choisser  
Backshop Foreman: Arnold Frier  
Business Mgr.: Steve Choisser

### **Services:**

Associated Press  
Metro, Stamps  
National advertising accepted  
Mat service

### **Dimensions:**

Page dimensions in inches: 16x 21½  
No. of col. per page: 8  
Width of col. (in picas): 12  
Depth of col. (in agate lines): 287  
Average number pages per issue: 8

### **Plant Equipment:**

Duplex newspaper press  
Four platen; one cylinder job press  
Three linotypes  
Press-type camera

### **Location and Mailing Information:**

Benton is located 36 miles northeast of Carbondale on State Highway 37 and is served by the C & E. I., I. C., and M. P. railroads. The I. C. provides the quickest services between the two cities.

April 8, 1943 - Dec. 25, 1947  
June, 1948 - date

**BENTON**

## **Benton Standard**

Benton Population 7,874 Ph. 65  
Established: 1849 Franklin County Independent  
Publisher: Benton Evening News Co. Editor: Beulah Johnson  
Corporation **Published Thursday**  
Circulation: (press run figures): 1500  
Area of Distribution: Greater Franklin county, portions of Perry, Jefferson,  
Hamilton counties.

### **Deadlines:**

Copy deadline for news: Wednesday noon  
Advertisement deadline: Tuesday  
Newspaper is mailed: Thursday afternoon

### **Rates:**

Classified advertising: 30c minimum  
Display advertising per inch: 30c  
Subscription per year: \$2.00

### **Staff:**

Editorial: 3  
Business: 2  
Backshop: 9  
Total: 17

### **Names of Staff Members:**

Sports writer: Richard Jackson  
Advertising Mgr.: Steve Choisser  
Backshop Foreman: Arnold Frier  
Business Mgr.: Steve Choisser

Regional correspondents: 4 (No standard rate of payment)  
Photographs are supplied by photographer-newsmen combination, freelance photographers and commercial photographers.

### **Services:**

No non-staff news services used  
Mat Service  
National advertising

### **Dimensions:**

Page dimensions in inches: 20½x16  
Number of columns per page: 8  
Width of column (in picas): 12  
Depth of column (in agate lines): 287  
Average number of pages per issue: 4

### **Plant Equipment:**

Duplex newspaper press  
Job presses: 4 platen; 1 cylinder  
Three linotypes  
Press-type camera; bookbinding equipment

### **Location and Mailing Information:**

Benton is located 36 miles northeast of Carbondale on State Highway 37 and is served by the C & E. I., I. C., and M. P. railroads. The I. C. provides the quickest services between the two cities.

11

Benton Republican  
21 April 1921 - 28 Feb 1924 ceased  
pub. 2



Sept. 29, 1938 - date

**BREESE**

## **Breese Journal**

Breese  
Established 1921  
Publisher: E. J. Mahlandt  
Privately owned  
Circulation: (press run figures) 2150  
Area of Distribution: Eight-mile radius from Breese in central Clinton county.

Population 2600  
Clinton County

Ph. 108  
Democratic  
Editor: Jerry Mahlandt  
**Published Wednesdays**

### **Deadlines:**

Copy deadline for news: Wednesday 10 a. m.  
Advertisement deadline: Tuesday noon  
Newspaper is mailed: Wednesday, 3 p.m.

### **Rates:**

Classified advertising: 10c per line  
Display advertising per inch: 35c local, 45c foreign  
Subscription per year: \$2.00

### **Staff:**

Editorial: combined  
Business: 1  
Backshop: 3  
Total: 4  
Regional correspondents: 9 (rate of payment per col. in. 5c)  
Photographs are supplied by free lance photographers

### **Services:**

No non-staff news services used  
Mat service  
National advertising

### **Dimensions:**

Page dimensions in inches: 15x22  
Number of columns per page: 6  
Width of column (in picas): 13  
Depth of column (in agate lines): 280

### **Plant Equipment:**

Four-page Babcock Reliance, folder attached  
Two platen job presses  
One linotype  
Kluge automatic 12x18, casting box, saw, router, 2 staplers, etc.

### **Location and Mailing Information:**

Breese is located 80 miles north of Carbondale on U. S. Highway 50 and is served by the B. & O. railroad. Rail connections with the B. & O. provides quickest mailing service between the two cities.

**BRIDGEPORT**

# **Bridgeport Leader**

**COMBINED WITH ST. FRANCISVILLE TIMES**

Bridgeport	Population 2500	Ph. 139
Established: 1906	Lawrence County	Independent
Publisher: Roy R. Rucker		Editor: Roy R. Rucker
Type of Ownership: Corporation		<b>Published Thursday</b>
Circulation: (press run figures) 1675		
Area of Distribution: Greater Lawrence county		

## **Deadlines:**

Copy deadline for news: Wednesday afternoon—Spot news Thurs. a.m.  
Advertisement deadline: Wednesday noon  
Newspaper is mailed: Thursday noon

## **Rates:**

Classified advertising: 2c per word—minimum 25c  
Display advertising per inch: 49c  
Subscription per year: \$2.00 and \$2.50

## **Staff:**

Editorial: 2  
Business: 1  
Backshop: 5  
Total: 8

## **Names of Staff Members:**

Sports Writer: Glen Laughlin  
Advertising Mgr.: Robert Rucker  
Business Mgr.: Roy R. Rucker

Regional correspondents: 14 (one correspondent is paid regular rate—  
No regular rate for others)  
Photographs are supplied by free lance photographers and by commercial photographers.

## **Services:**

No non-staff news services  
National advertising  
Mat service

## **Dimensions:**

Page dimensions (in inches): 15x22  
Number of columns per page: 6  
Width of column (in picas): 13  
Depth of column (in agate lines): 280  
Average number of pages per issue: 10

## **Plant Equipment:**

Cranston flat bed newspaper press  
Three platen; one cylinder job presses  
One linotype  
Bookbinding equipment

## **Location and Mailing Information:**

Bridgeport is located 130 miles north of Carbondale on U. S. Highway 50 and is served by the Baltimore and Ohio railroad. The rail connections with the B & O furnishes the quickest mailing service between the two cities.

## **BROOKPORT**

# **The Brookport Independent**

Brookport Population 1,247 Ph. 50  
Established: 1924 Massac County Ind.-Rep.  
Publisher: Charles C. Feirich Editors: Mrs. J. L. Hall, Mrs. A. L. Holder  
Privately owned **Published Thursday**  
Circulation: (press run figures): 500  
Area of Distribution: Ten-mile radius from Brookport including southeastern corner of Massac county, and northeastern corner of McCracken county, Kentucky.

### **Deadlines:**

Copy deadline for news: Wednesday  
Newspaper is mailed: Thursday afternoon

### **Rates:**

Classified advertising: 2c per word and 3c foreign  
Display advertising per inch: 30c local, 42c foreign  
Subscription per year: \$1.50 and \$2.00

### **Staff:**

Editorial: 1  
No backshop personnel  
Business Mgr.: Miss Hattie Mann  
Total: 1  
Regional correspondents: 2 (no standard rate of payment)  
Photographs are supplied by commercial photographers.

### **Services:**

No non-staff news service used  
Mat service  
National advertising

### **Dimensions:**

Page dimensions in inches: 16x22  
Number of col. per page: 7  
Width of col. (in picas): 12  
Depth of col. (in agate lines): 280  
Av. no. pages per issue: 4

### **Plant Equipment:**

The Independent has no backshop or plant equipment since the newspaper is printed in the **Metropolis News** shop at Metropolis.

### **Location and Mailing Information:**

Brookport is located 70 miles southeast of Carbondale on U.S. Highway 45 and served by the Illinois Central railroad. A daily mail truck route from Carbondale furnishes the quickest service between the two cities.

Jan., 1956 - date

28

CAIRO

## The Cairo Evening Citizen

Cairo Population 17,000 Ph. 88, 89, 92  
Established 1885 Alexander County Ind.-Rep.  
Publisher: Mrs. John C. Fisher Editor: Mrs. John C. Fisher  
Corporation **Pub. Evenings except Sunday**  
Circulation: (press run figures): 8432  
Area of distribution: Alexander, Pulaski, Massac, Union and Johnson counties.  
Wide area in southeastern Missouri and northwestern Kentucky.

### Deadlines:

Copy deadline for news: 2:30-2:45 daily  
Advertisement deadline: No definite time, ads are received as long as possible to set and get in.  
Newspaper is mailed: Immediately after first and second edition.

### Rates:

Classified advertising: 3c per word per issue; min. 75c.  
Display advertising per inch: 84c  
Subscription per year: \$7.50 and \$10.00

### Staff:

Editorial: 6  
Business: 4  
Backshop: 12  
Total: 35

### Names of Staff Members:

Advertising Director: Earl Jewell  
Backshop Foreman: Roy White  
Business Mgr.: Mrs. John C. Fisher

Regional correspondents: 25 (rate of payment per col. in. varies from 60c to \$1.25)  
Photographs are supplied by photographer-newsman combination, commercial photographers, and by reader contributors.

### Dimensions:

Page dimensions in inches: 34x17  
Number of col. per page: 8  
Width of col. (in picas): 12  
Depth of col. (in agate lines): 294  
Av. no. pages per issue: 10

### Services:

Associated Press  
Mat Service  
National advertising  
N. E. A. Audit Bureau  
of Circulation

### Plant Equipment:

Sixteen-page Duplex Rotary newspaper press  
Two platen job presses  
Five linotypes  
Fairchild Engraver  
Ludlow, Elrod, Addressograph (2), mimeograph equipment.

### Location and Mailing Information:

Cairo is located at the southernmost point of Illinois at the confluence of the Ohio and Mississippi rivers and is served by the G. M. & O., New York Central, Illinois Central, and Missouri Pacific railroads. The I. C. provides the quickest mailing service between the two cities.

1938-1945

1947 - April, 1955 (Ceased pub.)

**CARBONDALE**

## **The Carbondale Herald**

Carbondale Population 12,000 Ph. 551-Y  
Established 1891 Jackson County Democratic  
Publisher: The Carbondale Herald Inc.  
Executive Editor: A. F. Pelzer Managing Editor: Sidney Silverman  
Type of Ownership: Corporation **Published Friday**  
Circulation (press run figures) 3,000

### **Deadlines:**

Copy deadline for news: Wednesday evening  
Advertisement deadline: Tuesday evening

### **Rates:**

Classified advertising: 2c per word per insertion  
Display advertising per inch: Local 62c, National 63c  
\*Subscription per year: \$2.00 in county; outside \$2.50

### **Staff:**

Editorial: 4  
Business: 3  
Backshop: 4  
Total: 8

### **Names of Staff Members:**

Feature Editor: Sidney Silverman  
Advertising Mgr. Sidney Silverman  
Backshop Foreman: Tom Langdon  
Business Mgrs.: A. F. Pelzer  
R. P. Martell

Regional correspondents: 3 (No rate of pay per column inch)  
Photographs are supplied by no regular method

### **Services:**

No non-staff news services used  
Farm Bureau news and features  
Mat service  
National advertising

### **Dimensions:**

Page dimension: 17½ x 22  
Number of columns per page: 8  
Width of column (in picas): 12  
Depth of column (in agate lines) 280  
Average number of pages per issue: 10

### **Plant Equipment:**

Duplex Perfecting newspaper press  
Two platen job presses  
One cylinder job press  
One linotype  
Addressograph and Baum Folder

### **Location and Mailing Information:**

\*The Carbondale Herald is the official newspaper of Jackson County Farm Bureau. All members of Farm Bureau are paid subscribers of Carbondale Herald and subscription price is included in annual dues.

Advertising schedule for **The Carbondale Herald** also appears in **The Carbondale Advertiser**, reaching every home in city by mail. No additional charge.

1947-1953  
1954-date on microfilm

**CARBONDALE**

**Southern Illinoisan (Free Press)**

<b>DAILY FREE PRESS</b>	<b>DAILY INDEPENDENT</b>	<b>DAILY JOURNAL</b>
Edition	Edition	Edition
Carbondale, Ph. 218	Murphysboro, Ph. 35	Herrin, Ph. 361
Established 1947	Jackson-Williamson county	Ind.
Publisher: Edward Lindsay		See Staff for Editors
Corp: Southern Illinois Publications, Inc:		<b>Published daily except Sunday</b>
Circulation (press run figures) 15,800		
Area of Distribution: Greater Randolph, Perry, Franklin, Jackson, William- son, Union and Johnson counties.		

The **Southern Illinoisan** is a Lindsey-Schaub newspaper. Others are: the **Champaign-Urbana Courier**, **Decatur Herald and Review**, and **E. St. Louis Journal**

**Deadlines:**

Copy deadline for news: 1 p.m. daily  
Advertisement deadline: Day preceding  
Newspaper is mailed: 5 p.m. daily

**Rates:**

Classified advertising: Local, 3 lines, 6 da. \$1.; Nat'l, 20c line.  
Display advertising per col. inch: General \$1.54; local open \$1.75, lower rates for volume and frequency.  
Subscription per year: \$7.50 by mail; 25c per wk. by carrier.

**Staff:**

**Names of Staff Members:**

Total M'boro: 31	Gen. Mgr. (C'dale): W. A. Dougherty
Total C'dale: 30	Gen. Mgr. (Herrin): Grant Coover
Total Herrin: 30	Gen. Mgr. (M'boro): Cecil Holloway
Sports Editor. Merle Jones	
Adv. Mgr.: (C'dale) Lindsey Lowill; (Herrin): Marie Franklin; (M'boro) James Rollo	
Backshop Foreman: (C'dale) Edward Anderson; (Herrin) Anthony Bierman; (M'boro) Russell Siefert	
Regional Correspondents: 20 (Rate per col. inch: 5c to 10c)	
Photographs are supplied by photographer-newsmen combination, free lance, and commercial photographers.	

**Services:**

Associated Press, United Press, National Adv., Mat Service

**Dimensions:**

Page dimensions in inches: 16 7/8x20  
No. col. per page: 8                      Depth of col. (in agate line): 280  
Width of col. (in picas): 12              Av. no. pages per issue: 16

**Plant Equipment:**

Goss Straightline newspaper press  
M'boro job shop: 3 platen job presses; one vertical, one offset  
Linotypes: C'dale 6; M'boro 4; Herrin 4.  
Addressograph, press-type camera, photo processing equipment

*Free Press 1939-March 1947*  
*Carta's Free Press 6 Jan 1883-29 Dec 1888*

*New Era 22 Nov 1866 - 31 Aug 1869*  
*some other may*

**CARLYLE**

## **Carlyle Democrat**

Carlyle Population 2650 Ph. 2626  
Established: 1929 Clinton Ind.  
Publisher: Casey Dempsey Editor: Casey Dempsey  
Privately owned **Published Thursday**  
Circulation: (press run figures): Av. 1125  
Area of Distribution: Concentrated in Carlyle and rural routes out of city.  
Covers central Clinton county.

### **Deadlines:**

Copy deadline for news: Thursday morning for spot news  
Advertisement deadline: Wednesday  
Newspaper is mailed: Thursday afternoon

### **Rates:**

Classified advertising: 2c per word; 40c minimum  
Display advertising per inch; 40c local; 42c national  
Subscription per year: \$2.00

### **Staff:**

Editorial: 1  
Backshop: 2  
Part-time job printer  
Total: 3  
Regional correspondents: 3 (50c per week rate of payment)  
Commercial photographers supply photographs.

### **Services:**

No non-staff news services  
Mat service  
National advertising

### **Dimensions:**

Page dimensions (overall) 15x20  
No. of col. per page: 6  
Width of col. (in picas) 13  
Depth of col. (in agate lines): 280  
Av. no. pages per issue: 7

### **Plant Equipment:**

Cylinder newspaper press  
Two platen job presses  
One linotype

### **Location and Mailing Information:**

Carlyle is located 75 miles northwest of Carbondale on U. S. Highway 50, and is served by the B & O railroad. The Illinois Central via B & O system provides the quickest service between the two cities.

Oct. 9, 1914 - Dec. 24, 1950  
Nov. 28, 1947, - Dec., 1953  
Feb. 16, 1956 - date

(These are only  
clips in part be-  
cause of pending of  
scattered issues into  
CARLYLE vols.)

## Union Banner

Carlyle Population 2650 Ph. 3131  
Established: 1852 Clinton County Ind.  
Publisher: Arthur D. Jenkins Editor: Arthur D. Jenkins  
Privately owned **Published Thursday**  
Circulation: (press run figures): 2600  
Area of Distribution: Central Clinton county  
The **Union Banner** is syndicated with **New Baden News, Mascoutah Herald,**  
and **Clinton County News,** Trenton, Illinois.

### Deadlines:

Copy deadline for news: Tuesday noon  
Advertisement deadline: Monday noon  
Newspaper is mailed: Wednesday morning

### Rates:

Classified advertising: 10c per line  
Display advertising per inch: 56c  
Subscription per year: \$2.00

### Staff:

Editorial: 2  
Backshop: 2  
Business staff: 2  
Total: 6  
Advertising Mgr.: Arthur D. Jenkins  
Regional correspondents: 6 (Rate of payment per col. in.: 5c)  
Photographs are supplied by photographer-newsman combination and  
by commercial photographers.

### Services:

No non-staff news services  
WNU; NEA feature service  
National advertising  
Mat service

### Dimensions:

Page dimensions in inches: 15x22  
No. of col. per page: 6  
Width of col. (in picas): 13  
Depth of col. (in agate lines): 276  
Av. no. pages per issue: 12

### Plant Equipment:

Babcock Standard newspaper press  
Two Intertypes  
Addressograph, press-type camera, photo processing equipment.

### Location and Mailing Information

Carlyle is located 75 miles north of Carbondale on U. S. Highway 50 and  
is served by the B & O railroad. The B & O system provides the quickest  
mailing service between the two cities.



Aug. 5, 1915 - June 22, 1916

Aug., 1916 - July 28, 1921

Nov. 29, 1924 - Oct. 25, 1934

Nov. 7, 1935 - Dec., 1952 *Ceased pub-* **CARMI**

## **Carmi Democrat-Tribune**

Carmi Population 5522 Ph. 4141  
Established: 1858 White County Independent  
Publisher: Earl Clippinger Editor: J. Robert Smith  
Type of Ownership: Corporation **Published Monday through Friday**  
Circulation: (press run figures) 4800  
Area of Distribution: Greater White, Hamilton, and Wayne counties; portions of Edwards, Wabash, Jefferson, Franklin, Saline and Gallatin counties.

### **Deadlines:**

Copy deadline for news: 12:30 p.m. daily  
Advertisement deadline: 12 noon day before scheduled  
Newspaper is mailed: 3 p.m. daily

### **Rates:**

Classified advertising: 10c per line  
Display advertising per inch: Local 60c; National 70c.  
Subscription per year: White county \$5; surrounding counties \$7

### **Staff:**

Editorial: 2  
Business: 3  
Backshop: 12  
Total: 25

### **Names of Staff Members:**

Sports writer: Glen Hubele  
Advertising Mgr.: D. Fred Enidcott  
Backshop Foreman: John Hancock  
Business Mgr.: Earl Clippinger  
Regional correspondents: 18 (60c rate of payment per col.)  
Photographs are supplied by free lance and commercial photographers.

### **Services:**

Associated Press  
Mat Service  
National advertising

### **Dimensions:**

Page dimensions in inches: 168  
Number of columns per page: 8  
Width of column (in picas): 12  
Depth of column (in agate lines): 294  
Average number of pages per issue: 8

### **Plant Equipment:**

Model E. Duplex newspaper press  
Six platen, one cylinder job presses  
Four linotypes  
Elrod, Photo processing equipment

### **Location and Mailing Information:**

Carmi is located 70 miles northeast of Carbondale on State Highway 1 and is served by the New York Central and L & N railroads. The quickest mailing service is by bus between the two cities.

Sept. 1956 - date

**CARMI**

## **Carmi Times**

Carmi Population 5522 Ph. 4176-4177-7726  
Established 1950 White County Ind.  
Publisher: Carmi Times Publishing Co. Editor: Roy Clippinger  
Corporation **Published Friday**  
Circulation (press run figures): 5,000  
Area of distribution. White county; portions of Edwards, Wabash, Wayne,  
Hamilton, Saline, Galatin counties; portions of Posey county in Indiana.

### **Deadlines:**

Copy deadline for news: Thursday afternoon  
Advertisement deadline: Wednesday noon  
Newspaper is mailed: Friday 6 a. m.

### **Rates:**

Classified advertising: 10c per line  
Display advertising per inch: local 60c; national 70c  
Subscription per year: \$3

### **Staff:**

Editorial: 4  
Back shop: 9  
Business & Editorial: 5  
Total: 18

### **Names of Staff Members:**

Sports writer: Howard Reedy  
Advertising Mgr.: Tom Collard  
Business Mgr.: Roy Clippinger

Regional correspondents. 53 (No standard rate of payment)  
Photographs are supplied by commercial photographers

### **Services:**

No non-staff news service  
Mat service  
National advertising

### **Dimensions:**

Page dimensions: 21 inches x 8 col.  
Number of col. per page: 8  
Width of col. (in picas): 12  
Depth of col. (in agate lines): 294  
Average number pages per issue: 16

### **Plant Equipment**

Miehle newspaper press  
Four platen; one cylinder job presses  
Three linotypes  
Engraving equipment  
Addressograph, Virkotype machine, and bookbinding equipment

### **Location and Mailing Information:**

Carmi is located 70 miles northeast of Carbondale on State Highway 1 and is served by the New York Central and L. & N. railroads. The quickest mailing service is by C. & H. bus between the two cities.

## CARRIER MILLS

### Carrier Mills News

Carrier Mills Population 2500 Dial 3343  
Established: 1946 Saline County Independent  
Publisher: P. J. Valter Editor: Carl Alexander  
Privately owned **Published Thursday**

Circulation: (press run figures): 850  
Area of Distribution: Southwestern Saline, southeastern Williamson, north-eastern Johnson, and northwestern Pope counties.  
The **Carrier Mills News** is syndicated with the **Gallatin Democrat, The Ridgeway News, Eldorado Examiner, and Norris City News**. P. J. Valter of Shawneetown is the publisher.

#### Deadlines:

Copy deadline for news: Wednesday noon  
Advertisement deadline: Tuesday noon  
Newspaper is mailed: Thursday noon

#### Rates:

Classified advertising: 2c per word  
Display advertising per inch: 40c local; 49c national  
Subscription per year: \$1.50 in trade territory. \$2.50 outside.

#### Staff:

Editorial: 3  
Business: 2  
Total: 3

#### Names of Staff Members:

Sports writer: Carl Alexander  
Advertising Mgr.: Same  
Business Mgr.: Carl Alexander

Regional correspondents: 5 (Rate of payment per col. in. 2½ c)  
Photographs are supplied by free lance photographers and by reader contributions.

#### Services:

No non-staff news services used. Mat Service  
King Features National advertising

#### Dimensions:

Page dimensions (in inches): 17½ x 22½  
Width of col. (in picas): 12 Depth of col. (in agate lines): 294  
No. of col. per page: 8 Av. no. pages per issue: 6

#### Plant Equipment:

The News is printed at Shawneetown which has the following:  
Duplex newspaper press Fairchild Engraver  
Three platen job presses Four linotypes  
One multilith Elrod

#### Location and Mailing Information:

Carrier Mills is located 40 miles east of Carbondale on U. S. Highway 45 and is served by the New York Central railroad. C & H bus to Harrisburg. Saline County bus to Carrier Mills system provides the quickest mailing route between the two cities.

Dec. 1917 - Jan 12, 1951  
Feb. 1956 - date

## CARTERVILLE

### **Carterville Herald**

Carterville                      Population 2,800                      Ph. 2051  
Established 1889                  Williamson County                      Ind.-Rep.  
Publisher: Frank Ledbetter                      Editor: Frank Ledbetter  
Privately Owned                                      **Published Thursday**  
Circulation (press run figures) 720  
Area of distribution: Western part of Williamson county

#### **Deadlines:**

Copy deadline for news: Thursday morning  
Advertisement deadline: Wednesday noon  
Newspaper is mailed: Friday morning

#### **Rates:**

Classified advertising: 2c per word  
Display advertising per inch: 42c  
Subscription per year: \$2.00

#### **Staff:**

Editorial: 1  
Backshop: 1  
Total: 2  
No regular regional correspondents or methods for obtaining photographs.

#### **Services:**

No non-staff news services  
National advertising  
Mat Service

#### **Dimensions:**

Page dimensions (in inches): 20x15  
Number of columns per page: 6  
Width of column (in picas): 13  
Depth of column (in agate lines) 280  
Average number of pages per issue: 4 to 6

#### **Plant Equipment:**

Cottrell newspaper press  
Two platen; one cylinder job press  
One linotype

#### **Location and Mailing Information:**

Carterville is located 10 miles east of Carbondale, half mile north of State Highway 13 and is served by the Illinois Central. Trucks and I. C. routes both furnish quick mailing services between the two cities.

Jan., 1956 - date

CENTRALIA

## Centralia Evening Sentinel

Centralia Population 19,000 Ph. 7533  
Established: 1885 Marion County Ind.  
Publisher: Joy Publishing Co. Editor: Verne E. Joy  
Corporation **Published Daily (ex. Sunday)**  
Circulation (ABC): 11,603  
Area of distribution: Greater Marion county, portions of Clay, Fayette, Jefferson, Washington and Clinton counties.

### Deadlines:

Copy deadlines for news: 11:00 a.m.  
Advertisement deadline: Less than 40", noon day before; over 40" 9 a.m. day before; Monday insertion, noon Friday.  
Newspaper is mailed: 1st edition 2 p. m.; 2nd edition 4 p. m.

### Rates:

Classified advertising rates: 4c line per day, 3 lines, 3 times min chg.  
Display advertising rates. 98c open or non-contract  
Subscription per year: \$6.00 within Marion county and adjoining counties—Weekly by carriers 25c

### Staff:

Editorial: 5  
Business: 11  
Backshop: 12  
Circulation & Mailing: 6  
Teletype setters: 4  
Total: 42

### Names of Staff Members:

Sports writer: E. C. Trent  
Adv. Mgr. Robert Mapes  
Business Mgr.: Harry Mapes  
Backshop Foreman: P. I. Norris  
City Editor: Fred L. Senters

Regional correspondents: 40 (Rate of payment to \$2 per col.)  
Photographs are supplied by full time photographer; photographer-newsman combination; free lance photographers and commercial photographers.

### Dimensions:

Page dimensions in inches: 17x22½  
Number of columns per page: 8  
Width of column (in picas): 12  
Depth of column (in agate lines): 297  
Av. no. pages per issue: 12

### Services:

NEA features; AP  
Mat Service  
National advertising

### Plant Equipment:

Rotary Duplex, 24 pages  
Job presses: 3 platen; 1 cylinder  
Six linotypes  
Ludlow; Elrod; Addressograph; Virkotype machine; press-type camera; and Engraving plant.

### Location and Mailing Information:

Centralia is located 63 miles north of Carbondale on U. S. Highway 51 and is served by the I. C., Southern, C. B. & O. railroads. The I. C. provides the quickest mailing service between the two cities.

Jan. 17, 1935 - Feb 19, 1935  
Sept. 6, 1935 - date

**CHESTER**

## **Chester Herald-Tribune**

Chester Population 5,100 Ph. 221  
 Established: 1860 Randolph County Ind.  
 Publisher: File & Koeneman Editor: C. W. Scott  
 Partnership **Published Friday**  
 Circulation: (press run figures): 4100  
 Area of Distribution: 25-mile radius touching parts of Monroe, Perry, Jackson and St. Clair counties.

### **Deadlines:**

Copy deadline for news: Thursday 11:00 a.m.  
 Advertisement deadline: Wednesday 11 a.m.  
 Newspaper is mailed: Thursday p.m. and Friday a.m.

### **Rates:**

Classified advertising: 3c per word; 25c minimum  
 Display advertising per inch: 56c; 70c national  
 Subscription per year: \$3.00

### **Staff:**

### **Names of Staff Members:**

Editorial: 4	Sports writer: C. W. Scott
Backshop: 6	Adv. Mgr.: Jeannette T. File
Business Staff: 3	Backshop Foreman: E. E. Prost
Total: 13	Business Mgr.: L. A. File
Regional correspondents: 4 (rate of payment per col. in.: 7c)	
Photographs are supplied by photographer-newsman combination, and commercial photographers.	

### **Services:**

International News Service  
 King Features, WNU, Stamps-Conhaim  
 National advertising  
 Mat service

### **Dimensions:**

Page dimensions in inches: 160 (overall)  
 No. of col. per page: 8  
 Width of col. (in picas): 12  
 Depth of col. (in agate lines): 280  
 Av. no. pages per issue: 14

### **Plant Equipment:**

Goss Comet newspaper press  
 Three platen; one offset job presses  
 Two linotypes  
 Photo-engraving equipment sufficient to handle 100% of the work.  
 Addressograph, press-type camera, photo processing equipment.

### **Location and Mailing Information:**

Chester is located 38 miles west of Carbondale on State Highway 3 and is served by the Mo-Pac., and Mo.-Ill. railroads. The quickest mailing service between the two cities is the Star route to Pinckneyville; I. C. to Carbondale.

## CHRISTOPHER

### The Progress

Christopher  
Established: 1904  
Publisher: Victor C. Leiker  
Privately owned  
Circulation: (press run figures): 1469  
Area of Distribution: Central Franklin county

Population 4,000  
Franklin County

Ph. 62  
Dem.  
Editor: Victor C. Leiker  
**Published Thursday**

#### Deadlines:

Copy deadline for news: Wednesday 12 noon  
Advertisement deadline: Wednesday 10 a.m.  
Newspaper is mailed: Thursday 3 p.m.

#### Rates:

Classified advertising: 2c per word  
Display advertising per inch: 30c local; 42c national  
Subscription per year: \$2.00

#### Staff:

Editorial: 2  
Backshop: 2  
Total: 2  
Total: 2  
Business Mgr.: Mrs. Victor C. Leiker  
Number of regional correspondents: 4 (no standard rate of payment)  
Photographs are supplied by commercial photographers and by editor.

#### Services:

No non-staff news services  
WNU Feature service  
Mat service  
National advertising  
Mat service

#### Dimensions:

Page dimensions in inches: 16½x20½  
No. col. per page: 8  
Width of col. (in picas): 13  
Depth of col. in agate lines: 280  
Av. no. pages per issue: 8

#### Plant Equipment:

Babcock Standard newspaper press  
Two platen; one cylinder job presses  
One linotype

#### Location and Mailing Information:

Christopher is located 27 miles northeast of Carbondale on State Highway 14 and served by the CB & O and I. C. railroads. The Illinois Central provides the quickest mailing service between the two cities.

## CLAY CITY

# Clay County Advocate

Clay City

Population 1,150

Ph. 100

Established: 1886

Clay County

Independent

Publisher: Arthur A. Allen

Editor: Arthur A. Allen

Privately owned

**Published Thursday**

Circulation: (press run figures): 785

Area of Distribution: South eastern Clay county and portions of Richland and Wayne counties.

### **Deadlines:**

Copy deadline for news: Wednesday noon

Advertisement deadline: Wednesday noon

Newspaper is mailed: Thursday p.m.

### **Rates:**

Classified advertising rates: 3c per word. 50c minimum

Display advertising rate: local 30c; foreign 42c per col. inch

Subscription per year: \$2.00

### **Staff:**

Editorial: 1

Business: 1

Backshop: 1

Total: 2

Regional correspondents: 6 (No standard rate of payment)

Photographs are supplied by no regular method.

### **Services:**

WNU Printed Service

Mat Service

National advertising

### **Dimensions:**

Page dimensions in inches: 7 col x 20

Number of columns per page: 7

Width of column (in picas): 12

Depth of column (in agate lines): 275

Av. no. pages per issue: 8

### **Plant Equipment:**

Babcock Cylinder, Att. Folder

One platen job press

One linotype

Hammond Easy Caster, Elliott Address-O-Graph

### **Location and Mailing Information:**

Clay City is located about 110 miles northeast of Carbondale on U. S. Highway 50 and is served by the B & O railroad. Connections between the B & O and the I. C. provide the quickest mailing service between the two cities.



Jan., 1956 - date

**COBDEN**

## The Cobden Review

Cobden Population 1,200 Ph. 104  
Established: 1924 Union County Ind.  
Publisher: S. L. Speer Editor: S. L. Speer  
Privately owned **Published Thursday**  
Circulation: (press run figures): 780  
Area of Distribution: Greater Union county and parts of Williamson, Jackson and Pulaski counties.

### Deadlines:

Copy deadline for news: Wednesday p.m.  
Advertisement deadline: Wednesday a.m.  
Newspaper is mailed: Friday 6:30 a.m.

### Rates:

Classified advertising rates: 2c per word; min. 25c  
Display advertising rates: 30c per inch  
Subscription per year: \$1.50-\$2.00

### Staff:

Editorial: 1  
Business: 1  
Backshop: 1  
Total: 3

### Names of Staff Members:

Advertising Mgr.: S. L. Speer  
Backshop Foreman: Floyd Leffans  
Business Mgr.: S. L. Speer

Regional correspondents: 5 (No regular rate of payment)  
Photographs are supplied by photographer-newsmen combination.

### Services:

No non-staff news services used  
Mat Service  
National advertising

### Dimensions:

Page dimensions in inches: 14x20.  
Number of columns per page: 7  
Width of column (in picas): 12  
Depth of column (in agate lines): 273  
Av. no. pages per issue: 8

### Plant Equipment:

C. B. Cottrell Newspaper Press  
Three platen job presses; one cylinder  
One linotype  
Press-type camera

### Location and Mailing Information:

Cobden is located 16 miles south of Carbondale on U. S. Highway 51 and is served by the I. C. railroad. The I. C. provides the quickest mailing service between the two cities.

Cobden Sentinel / 28

15 Oct 1914 - 21 Dec 1916  
ceased pub. 1918 ?

Jan. 1956 - date

**COLLINSVILLE**

**Collinsville Herald**

Collinsville	Population 13,000	Ph. 263 and 264
Established 1878	Madison County	Ind. Democrat
Publisher: James O. Monroe		Editor: James O. Monroe
Privately Owned		<b>Dated Friday</b>
Circulation (press run figures) 5160		
Area of Distribution: Extreme south portions of Madison; extreme north portions of St. Clair county.		

**Deadlines:**

Copy deadline for news: Thursday 10 a.m., spot news 2:15 p.m.  
 Advertisement deadline: Display Wed., evening, classified 10 a.m. Thurs.  
 Newspaper is mailed: Early Friday morning

**Rates:**

Classified advertising: 2c per word, 25c min., 35c additional for phone requiring bookkeeping entry.  
 Display advertising per inch: 70c col. in. (5c per line) basic; 60c on copy five days in advance; 65c three days in advance; 75c one day in advance.  
 Subscription per year: \$3.50

**Staff:**

Editorial: 3  
 Business: 3  
 Backshop: 15  
 Total: 21

**Names of Staff Members:**

Sports writers: E. J. Hazzard,  
 Karl Monroe  
 Advertising Mgr.: N. J. Weber  
 Backshop Foreman: Mike Daly  
 Business Mgr.: Karl L. Monroe

Nine extra on staff for seasonal job work  
 Regional Correspondents: 6 (20c rate of payment per col. inch)  
 Photographs are supplied by photographer-newsmen combination; freelance photographers; commercial photographers; readers.

**Services:**

No non-staff news services	Mat Service
Meyer Both; King Features comics	National advertising

**Dimensions:**

Overall page size in inches: 15¼x22¼; Number of col. per page: 7;  
 Depth of col. (in agate lines): 294; Av. no. pages per issue: 20

**Plant Equipment:**

Two No. 3 Miehle flat-bed cylinder newspaper presses  
 Three platen job presses  
 One Kelly job press  
 Three linotypes  
 Elrod, Addressograph, Press-type camera, Bookbinding equipment.

**Location and Mailing Information:**

Collinsville is located approximately 110 miles northwest of Carbondale on Highway 159 and is served by the Pennsylvania railroad. For quickest mail service between the two cities material could be placed on the Illinois Central R. R. to St. Louis and out on Pennsylvania or on Greyhound or All-American bus lines.

COLUMBIA

## Monroe County Clarion

Columbia Population 2,000 Ph. 42  
Established: 1940 Monroe County Ind.  
Publisher: Voris, Conrad & Miller, Inc. Editor: Roy P. Conrad  
Corporation **Published Wednesday**  
Circulation (press run figures): 3950  
Area of Distribution: Greater Monroe county; portions of St. Clair, and Randolph counties.

### Deadlines:

Copy deadline for news: Wednesday 11 a. m.  
Advertisement deadline: Wednesday 9 a. m.  
Newspaper is mailed: Wednesday 5 p. m.

### Rates:

Classified advertising: 2c per word  
Display advertising per inch: 60c  
Subscription per year: \$2.00

### Staff:

Editorial: 1  
Backshop: 3  
Business: 2  
Total: 5  
Business Mgr.: Roy P. Conrad  
No regional correspondents. Photographs are supplied by no regular method.

### Services:

Associated Press  
International News Service  
National advertising  
Metro Mat Service

### Dimensions:

Page dimensions in inches: 14x21  
No. of col. per page: 6  
Width of col. (in picas): 12  
Depth of col. (in agate lines): 266  
Av. no. pages per issue: 8

### Plant Equipment:

Babcock Reliance newspaper press  
Two platen; one cylinder job presses  
One Intertype

### Location and Mailing Information:

Columbia is located 100 miles northwest of Carbondale on State Highway 3, and is served by the G. M. & O. railroad. Bus line connections furnish the quickest mailing service between the two cities.

Dec. 27, 1917 - date

COLUMBIA

## Columbia Star

Columbia  
Established 1907

Population 2,000  
Monroe County

Ph. 42  
Independent

Publisher: Voris, Conrad & Miller, Inc.  
Corporation

Editor: Roy P. Conrad

**Published Thursday**

Circulation: (Press run figures) 875

Area of Distribution. Southeastern and central portions of Monroe county.

### Deadlines:

Copy deadline for news: Thursday morning.

Advertisement deadline: Wednesday noon

Newspaper is mailed: Thursday afternoon.

### Rates:

Classified advertising: 1c per word

Display advertising per inch: 35c

Subscription per year: \$2.00

### Staff:

Editorial: 1

Back shop: 3

Business: 2

Total: 5

Business Mgr.: Roy P. Conrad

No regional correspondents.

Photographs are supplied by no regular method

### Services:

Associated Press

Mat service

### Dimensions:

Page dimensions in inches: 14x21

No. of col. per page: 6

Width of col. (in picas): 12

Depth of col. (in agate lines): 266

Average no pages per issue: 8

### Plant Equipment:

Babcock Reliance newspaper press

Two platen; one cylinder job presses

One Intertype

### Location and Mailing Information:

Columbia is located 100 miles northwest of Carbondale on State Highway 3 and is served by the Mobile & Ohio railroad. Bus service offers the quickest service between the two cities.

*Apr. 19, 1912 - date*

## COULTERVILLE

### The Coulterville Republican

Coulterville                      Population 1400                      Ph. 53  
Established 1885                      Randolph county                      Independent-Republican  
Publisher: John McConachie                      Editor: John McConachie  
Privately owned                      **Published Thursday**  
Circulation: (press run figures) 400  
Area of distribution: Radius of 30 miles; greater Randolph county

#### **Deadlines:**

Copy deadline for news: Thursday 9:00 a. m.  
Advertising deadline: Wednesday 5:00 p. m.  
Newspaper is mailed: Thursday 4:30 p. m.

#### **Rates:**

Classified advertising: 2c per word; legals 15c per line  
Display advertising per inch: 28c  
Subscription per year: \$1.50

#### **Staff:**

Editorial: 1  
Back shop: 2  
Total: 3  
Regional correspondents: 3 (No standard rate of payment)  
Photographs are donated

#### **Services:**

No non-staff news services  
National advertising  
Mat service

#### **Dimensions:**

Page dimensions in inches: 20x26  
No. of col. per page: 5  
Width of col (in picas): 13  
Depth of col. (in agate lines): 250  
Average number pages per issue: 4 patent and 4 local

#### **Plant Equipment:**

Potter Jr. newspaper press  
One platen; one cylinder job press  
No linotype: Type is hand set  
Three column-10" mat casting equipment

#### **Location and Mailing Information:**

Coulterville is located 50 miles northwest of Carbondale on state highway 13, and is served by the I. C. and Missouri-Illinois railroads. The I. C. provides the quickest service between the towns.

Oct., 1914 - Dec., 1928

1948-1949

Many issues missing

**DAHLGREN**

## **Dahlgren Echo**

Dahlgren

Population 600

Ph. 177 McLeansboro

Established: 1889

Hamilton County

Democratic

Publisher: Times-Leader Inc.

Editor: (Not listed as there is no

Official editor)

Corporation

**Published Friday**

Circulation: (Press run figures): 500

Area of distribution: Northwestern Hamilton county and portions of Jefferson and Franklin counties.

Syndicated with Times-Leader Inc., McLeansboro.

### **Deadlines:**

Copy deadline for news: Thursday noon

Advertisement deadline: Wednesday evening

Newspaper is mailed: Friday

### **Rates:**

Classified advertising: 2c word

Display advertising per inch: 30c local

Subscription per year: \$1.50

### **Staff:**

Editorial:

Business: Same as Times-Leader, McLeansboro.

Back shop:

Total:

Regional correspondents: 4 (No standard rate of payment)

Photographs are supplied by commercial photographers

### **Services:**

No non-staff News service

Mat service

National advertising

### **Dimensions:**

Page dimensions in inches: 12½ x 20

No. of columns per page: 6

Width of column (in picas): 12

Depth of column (in agate lines): 280

Average number pages per issue: 8

### **Plant Equipment:**

See equipment listed for Times-Leader

### **Location and Mailing Information:**

Dahlgren is located about 60 miles northeast of Carbondale on U. S. Highway 460 and is served by the L & N railroad. The L & N or bus line provides the quickest mailing service between the two cities.

## DONGOLA

# Dongola Tri-County Record

Dongola Population: 800 Ph. 3R11  
Established 1932 Union County Independent  
Publisher: Frank M. Bond Editor: Frank M. Bond  
Privately owned Published Thursday  
Circulation: (Press run figures): 1000  
Area of distribution: Southeastern portion of Union county; western portion of Johnson and northern portion of Pulaski county.

### Deadlines:

Copy deadline for news: Wednesday  
Advertisement deadline: Wednesday  
Newspaper is mailed: Friday 7 a. m.

### Rates:

Classified advertising: 1c and 3c per word; 25c minimum  
Display advertising per inch: 35c  
Subscription per year: \$1.50 and \$2.00

### Staff:

Total staff: 4

### Names of Staff Members:

Advertising manager: Frank M. Bond  
Back shop foreman: B. M. Corzine  
Business Manager: V. B. Bond

Regional correspondents: 10 (No standard rate of payment)  
Photographs are supplied by free lance photographers and commercial photographers.

### Services:

No non-staff news services  
Western Newspaper Union  
National advertising  
Mat service

### Dimensions:

Page dimensions in inches: 15x22  
Number of col. per page: 6  
Width of col. (in picas): 13  
Depth of col. (in agate lines): 280  
Average no. pages per issue: 8

### Plant Equipment:

Babcock newspaper press  
Two platen job presses  
One linotype

### Location and Mailing Information:

Dongola is located 30 miles south of Carbondale on U. S. highway 51, and is served by the Illinois Central railroad. The Illinois Central and Greyhound lines provide the quickest service between the two towns.

Jan., 1956 - date

**DUPO**

## **Herald Tribune**

Dupo Population 2500 Ph. 118  
Established 1932 St. Clair county Independent  
Publisher: R. A. and H. A. Fischer Editor: Raymond A. Fischer  
Joint ownership **Published Friday; Printed Thursday**  
Circulation: (Press run figures): 2300  
Area of distribution: Northwestern corner of St. Clair county  
The **Herald Tribune** is printed in the **Journal-Press**, New Athens plant

### **Deadlines:**

Copy deadline for news: Thursday noon  
Advertisement deadline: Wednesday 9 a. m.  
Newspaper is mailed: Friday 7 a. m.

### **Rates:**

Classified advertising: 2c per word, minimum 50c  
Display advertising per inch: 42c  
\*Subscription per year: \$2.00

### **Staff:**

Editorial: 1  
Advertising manager: R. A. Fischer  
Business manager: same  
Other personnel listed under **New Athens Journal-Press**  
No regional correspondents  
Photographs supplied by **Tribune** readers

### **Services:**

No non-staff news services  
National advertising  
Mat service

### **Dimensions:**

Page dimensions in inches: 12¼ x 20  
Number of col. per page: 6  
Width of col. (in picas): 12  
Depth of col. (in agate lines): 280  
Average no. pages per issue: 8.

### **Plant Equipment:**

See New Athens **Journal-Press**; printed in plant there.

### **Location and Mailing Information:**

Dupo is located 100 miles northwest of Carbondale on State Highway 3, and is served by the Missouri Pacific railroad. Quickest mailing service between the two cities is provided through I. C. and M. & O. rail connections.  
\*The **Herald Tribune** is delivered free by mail to every home in Dupo, North Dupo, East Carondelet, Cahokia, Maplewood, Monsanto and rural routes.  
Subscription per year outside that area is \$2.00



**Du Quoin Evening Call**

Du Quoin Population 8,000 Ph. 60  
 Established 1896 Perry county Independent-Republican  
 Publisher. Call Publishing Company City Editor: Virgil Bishop  
 Corporation **Published Daily except Sunday**  
 Circulation (press run figures): 5500; paid 5335  
 Area of distribution: Perry, and portions of Washington, Jefferson, Franklin,  
 and Jackson counties.

**Deadlines:**

Copy deadline for news: 2:00 p. m. daily  
 Advertisement deadline: Noon day before publication for 1/4-page or larger

**Rates:**

Classified advertising: 20c per line  
 Display advertising per inch: 70c  
 Subscription per year: \$5 in Perry and adjoining counties; \$7 others; by  
 carrier 20c per week.

**Names of Staff Members:**

Adv. Mgr.: Herman D. Yehling  
 City Editor: Virgil Bishop  
 Treasurer: E. E. Weinberg  
 Photographs supplied by photographer-newsmen combination, free lance  
 and commercial photographers.

**Services:**

Associated Press  
 United Press  
 International News Service  
 Full NEA Service and Acme Telephoto  
 National advertising  
 Mat service

**Dimensions:**

Page dimensions in inches: 16 1/2 x 21  
 Number col. per page: 8  
 Width of col. (in picas): 12  
 Depth of col. (in agate lines): 294  
 Average no. pages per issue: 8

**Plant Equipment:**

Goss newspaper press  
 Two cylinder job presses  
 Engraving plant  
 Three linotypes  
 Elrod, press-type camera, photo processing equipment

**Location and Mailing Information:**

Du Quoin is located 20 miles north of Carbondale on U. S. Highway 51,  
 and is served by the I. C. R. R. The Illinois Central and C & H bus lines  
 provide the quickest service between the two towns.

*Jan., 1949 - date*

**DU QUOIN**

## **Du Quoin News**

Du Quoin  
Established 1932

Population 8000  
Perry county

Ph. 60  
Ind.-Rep.

Publisher: Call Publishing Co.

Privately owned

**Published Friday**

Circulation: (Press run figures): 850

Area of distribution: Greater Perry county; portions of Washington, Jefferson, Franklin, Jackson and Randolph counties.

Printed at **Du Quoin Evening Call**

### **Deadlines:**

Copy deadline for news: Thursday a. m.

Advertisement deadline: Thursday a. m.

Newspaper is mailed: Friday morning.

### **Rates:**

Classified advertising: 10c line 1 time; 20c line 3 times

Display advertising per inch: 25c local; 35c national

Subscription per year: \$1.50

### **Staff:**

### **Names of Staff Members:**

Business and Editorial office is located at the **Du Quoin Evening Call**.

Regional correspondents: None

Photographs are supplied by photographer-newsman combination

### **Services:**

No non-staff news services used

Mat Service

National advertising

### **Dimensions:**

Page dimensions: 21 inches x 8 col.

Number of columns per page: 8

Width of column (in picas): 12

Depth of column (in agate lines): 280

Average number of pages per issue: 4

### **Plant Equipment:**

Goss Comet newspaper press

One linotype; two intertypes

### **Location and Mailing Information:**

Du Quoin is located 20 miles north of Carbondale on U. S. Highway 51, and is served by the I. C. R. R. The Illinois Central and C & H bus lines provide the quickest service between the two towns.

EAST ST. LOUIS

# East St. Louis Journal

East St. Louis

Population 100,360

Ph. Upton 2500

BRidge 6379

Established 1888

St. Clair county

Independent

Publisher: East Shore Newspapers, Inc.

Editor: Edward Lindsay

Managing Editor: R. A. Barracks

Corporation

**Published evenings (except Sat.) & Sun. morning**

Circulation: 22,125 daily; 25,367 Sunday Net Paid ABC

Area of distribution: Corporate limits of East St. Louis, plus incorporated villages of Alorton, Brooklyn, Cahokia, Caseyville, Fairmont City, Monsanto, National City, Pearl Harbor and Washington Park, and the balance of townships of Canteen, Centreville, and Stes; in St. Clair county, Illinois.

The Journal is a Lindsey-Schaub newspaper. Other newspapers in this group: Decatur (Ill.) Herald; Decatur Review; Champaign-Urbana Courier; The Southern Illinoisan, Free Press edition, Carbondale; Daily Journal edition, Herrin; Daily Independent edition, Murphysboro.

## Deadlines:

Copy deadline for news: At discretion of News Editor

Advertisement deadline: Day before publication

Newspaper is mailed: Shortly after press starts 2 p. m. daily; 6 p. m.;

## Rates:

Classified advertising: Variable from 7½ to 12c per line

Display advertising: 7 to 12c per agate line

Subscription per year. \$11 by mail; \$18.20 home delivery; \$9 by mail. evening and Sunday by mail; \$5 Sunday only by mail.

## Staff:

Editorial: 16

Back shop: 56

Business: 39

Total: 111

Regional correspondents: 16 to 20 (no standard rate of payment)

Photographs are supplied by two full-time staff photographers; freelance photographers; commercial photographers, A. P. Wire photos.

## Names of Staff Members:

Sports Editor: Ellis Veech

Adv. Mgr.: Edwin Backs

Business Mgr.: E. K. Woods

General Mgr.: P. H. Wire

## Dimensions:

Page dimensions in inches: 16 7-18x21 3-7

Number col. per page: 8

Width of col. (in picas): 12

Depth of col. (in agate lines): 300

Average no. pages per issue: 17.2 daily; 45.6 Sunday

## Services:

Associated Press

United Press

National advertising

Mat service

## Plant Equipment:

Scott 4 unit Semi Cylindrical (64 pages) newspaper press

No job presses

Eight linotypes, 3 Intertypes

Fairchild engraver

Ludlow; Elrod; Mimeograph

## Location and Mailing Information:

East St. Louis is located 100 miles northwest of Carbondale on State Highway 13.

EAST ST. LOUIS

## The Messenger

(Official Newspaper of Catholic Diocese of Belleville, 28 southern counties)  
East St. Louis                      Population 100,360                      Ph. UPTon 3-3217  
Established 1907                      St. Clair county                      Independent  
Publisher: Catholic Diocese of Belleville                      Editor: Rev. Edmund W. Lugge  
Owned solely by Catholic Diocese                      **Published Thursday**  
Circulation (press run figures): 16,700 (Dec. 1 average)  
Area of distribution: Serves 82,000 Catholics in 28 southernmost counties.

### Deadlines:

Copy deadline for news: Wednesday noon each week  
Advertisement deadline: Tuesday 5 p. m. each week  
Newspaper is mailed Thursday evening

### Rates:

Classified advertising: 3c per word  
Display advertising per inch: Opens at \$1.40  
Subscription per year: \$2.00

### Staff:

Editorial: 2                      Adv. Mgr.: R. J. Welzhacher  
Business: 2  
Advertising: 2  
Total: 6  
Regional correspondents: 15 (No regular rate of pay)  
Photographs are supplied by: Photographer-newsmen combination; free lance photographers, commercial photographers, and National Catholic Photo Service.

### Services:

N. C. W. C. (Catholic) News Service, Washington D. C.  
Mat service                      National advertising

### Dimensions:

Page size: 16x21½ inches                      Depth of col. (in agate lines): 300  
Number of col. per page: 8                      Average number pages per issue: 8  
Width of col. (in picas): 12

### Plant Equipment:

Messenger has no mechanical plant since it is printed at the **East St. Louis Journal**

### Location and Mailing Information:

East St. Louis is located 100 miles northwest of Carbondale on State Highway 13. The Illinois Central Railroad offers the quickest mailing service between the two towns. The Messenger cannot be classified in the category of privately owned weekly publications. It is the official newspaper for the Catholic Diocese of Belleville and is published at the direction of the Catholic Bishop for the Catholic families of Southern Illinois. The publication serves all Southern Illinois counties with the exception of Madison, Bond and Fayette counties which are served by the **Western Catholic** a diocesan paper of the Springfield diocese.

May 24, 1956 - date

## EAST ST. LOUIS

### East St. Louis Press

East St. Louis  
Established 1938

Population 100,360  
St. Clair County

Ph. Upton 4-1133  
Independent

Publisher: Glen A. Shepard

Editor: Lyman Ross

Corporation

**Published Thursday**

Circulation (press run figures): 31,700

Area of Distribution: Western portion of St. Clair County.

#### Deadlines:

Copy deadline for news: Wednesday 5 p. m.

Advertisement deadline: Tuesday 5 p. m.

Newspaper is mailed: Thursday

#### Rates:

Classified advertising: 4c per word

Display advertising per inch: \$1.68

Subscription per year: \$5.00

#### Staff:

Editorial: 3

Business: 9

Back shop: 14

Total: 26

Photographers are supplied by free lance photographers on call.

#### Names of Staff Members:

Sports Writer: B. Gaines

Back shop foreman: Chas Lutz

Business Mgr.: Glen A. Shepard

Regional correspondents. None

#### Services:

No non-staff news services used

Mat service

National advertising

#### Dimensions:

Overall page size (in inches): 17x23 9/16

Number of col. per page: 8

Depth of col. (in agate lines): 300

Average number pages per issue: 28

#### Plant Equipment:

Scott Rotary Newspaper press

Four linotypes

Other machines; Ludlow; Elrod; Addressograph

#### Location and Mailing Information:

East St. Louis is located about 100 miles northwest of Carbondale on State Highway 13 and is served by 27 different railroad lines. The I. C. provides the quickest service between the two cities.

EAST ST. LOUIS

## The Reporter

East St. Louis  
Established 1945

Population 100,360  
St. Clair County

Ph. Upton 4-2527  
Independent

Publisher: Irwin A. Yare

Editor: Irwin A. Yare

Privately owned

**Published Wednesday**

Circulation (Press run figures): 1200

Area of Distribution: Greater St. Clair county

### Deadlines:

Copy deadline for news: Tuesday 5 p. m.

Advertisement deadline: Tuesday 5 p. m.

Newspaper is mailed: Wednesday 5 p. m.

### Rates:

Classified advertising: None

Display advertising per inch: 62½ c

Subscription per year: \$5.00

### Staff:

Editorial: 2

Business: 1

Total: 2

No regional correspondents

Photographs are supplied by commercial photographers.

### Services:

No non-staff news services

National advertising

Mat service

### Dimensions:

Page dimensions in inches: 10x15

Number of col. per page: 5

Width of col. (in picas): 12

Depth of col. (in agate lines): 210

Average number pages per issue: 8

### Plant Equipment:

No plant equipment—printing and back shop work is contracted.

### Location and Mailing Information:

East St. Louis is located 100 miles northwest of Carbondale on State Highway 13, and is served by 27 railroad terminals. The Illinois Central provides the quickest service between the two cities.

## EDWARDSVILLE

# Edwardsville Intelligencer

Edwardsville Population 8800 Ph. 47  
Established 1862 Madison County Independent  
Publisher: Gilbert S. Giese Editor: Everett L. Myers  
Corporation **Published daily except Sunday**  
Circulation (P. O. Sworn statement): 5184  
Area of distribution: Greater Madison county, portions of Macoupin, Bond counties.

### Deadlines:

Copy deadline for news: Noon daily  
Advertisement deadline: Day before publication  
Newspaper is mailed daily 5.00 p. m.

### Rates:

Classified advertising: 3c per word  
Display advertising per inch: 73½ to 59½c  
Subscription per year: \$13 carrier; \$6 by mail

### Staff:

Editorial: 7  
Back shop: 18  
Business: 7  
Total: 32

### Names of Staff Members:

Sports writer: William Kurtzeborn  
Adv. Mgr.: Joseph F. Rotter  
Back shop foreman: George Barnhart  
Business Mgr.: Oscar Ochs  
Regional correspondents. 12 (rate of payment per col. inch 50c)  
Photographs are supplied by no regular method.

### Services:

United Press  
NEA Features  
National advertising  
Mat service

### Dimensions:

Page dimensions. 8 col.x21 inches  
Number of col. per page: 8  
Width of col. (in picas): 12  
Depth of col. (in agate lines): 294

### Plant Equipment:

Goss 16-page rotary newspaper press  
Three platen; two cylinder job presses  
Five linotypes  
Ludlow; Elrod; Addressograph; teletypesetters

### Location and Mailing Information:

Edwardsville is located 175 miles northwest of Carbondale on U. S. Highway 66, and is served by the Wabash, Nickle Plate, Litchfield & Madison and Illinois Terminal railroads. Regular U. S. Mail channels provide the quickest service between the two cities.

## ELDORADO

### Examiner

Eldorado  
Established 1947

Population 5423  
Saline County

Ph. 404  
Democratic

Publisher. P. J. Valter  
Joint ownership

Editor: Grace Karnes

**Published bi-weekly: Tues. & Thurs**

Circulation (press run figures): 1927

Area of distribution: Northeastern Saline county and portions of Hamilton, White and Gallatin counties.

Syndicated with **Gallatin Democrat**, Shawneetown; **Ridgway News**; **Norris City News**; **Carrier Mills News**.

#### Deadlines:

Copy deadline for news: Mon. 5; Wed. 5

Advertisement deadline: Same as above

Newspaper is mailed: Tuesday and Thursday

#### Rates:

Classified advertising: 2c per word

Display advertising per inch: 40c local; 56c national

Subscription per year: \$2.50 local; \$4.00 national

#### Staff:

Editorial: 3

Business: 1

Back shop: (See **Gallatin Democrat**)

Total: 4

Regional correspondents: 5 (Rate of payment per col. 50c)

Photographs are supplied by commercial photographers

#### Names of Staff Members:

Sports writer: Robt. Summar

Adv. Mgr.: Robt. Summar

Back shop foreman: Leroy Montgomery

Business Mgr.: J. S. Towles

#### Services:

Roger Babson and Kathleen Norris columns

Mat service

National advertising

#### Dimensions:

Page dimensions in inches: 17½ x 22½

Number of col. per page. 8

Width of col. (in picas): 12

Depth of col. (in agate lines): 294

Average number pages per issue: 6

#### Plant Equipment:

See Valter Publications, Shawneetown, Ill.

#### Location and Mailing Information:

Eldorado is located 49 miles northeast of Carbondale on U. S. Highway 45 and is served by N. Y. Central and L & N railroads. Rail connections with L. & N. via Ashley provides the quickest mail service between the two cities.



**ELDORADO**

## **Eldorado Daily Journal**

Eldorado Population 5423 Ph. 160  
Established 1911 Saline County Ind.  
Publisher: Kenneth R. Trigg Editor: Kenneth R. Trigg  
Privately owned **Published daily except Sundays & Holidays**  
Circulation (press run figures): 3110  
Area of distribution: Greater Saline county and portions of Gallatin, Wil-  
liamson, Franklin, Hamilton, White and Pope counties.

### **Deadlines:**

Copy deadline for news: 12 noon  
Advertisement deadline: 10 a. m.  
Newspaper is mailed: Afternoon same day

### **Rates:**

Classified advertising: 2c per word per day: 30c minimum  
Display advertising per inch: 56c flat rate, composition 10c extra per in.  
Subscription per year: By mail \$2.50 (Eldorado and rural routes). By  
mail \$3.50 elsewhere. 15c per week by carrier

### **Staff:**

Editorial: 2  
Business: 3  
Back shop: 5  
Total: 7  
Regional correspondents: 4  
Photographs are supplied by commercial photographers

### **Names of Staff Members:**

Sports writer: William Searles  
Adv. Mgr.: Kenneth Trigg  
Back shop foreman: Noal Mathis  
Business Mgr.: Kenneth Trigg

### **Services:**

News services: INS  
Mat service  
National advertising  
King Feature service

### **Dimensions:**

Page dimensions in inches: 17x21  
Number of col. per page: 8  
Width of col. (in picas): 12  
Depth of col. (in agate lines): 294  
Average number pages per issue: 6

### **Plant Equipment:**

Goss Cox-O-Type Newspaper press  
Two platen job presses  
Two linotypes  
Two Trim-O-Saws

### **Location and Mailing Information:**

Eldorado is located 49 miles northeast of Carbondale on U. S. Highway 45 and is served by N. Y. Central and L & N railroads. Rail connections with L. & N. via Ashley provides the quickest mail service between the two cities.

July 11, 1940 - date

**ELIZABETHTOWN**

**Hardin County Independent**

Elizabethtown	Population 600	Ph. 36
Established 1871	Hardin county	Ind.
Publisher: Harry L. Porter		Editor: Harry L. Porter
Privately owned		<b>Published Wednesdays or Thursdays</b>
Circulation (press run figures): 2220		
Area of distribution: Greater Hardin county; extreme eastern portion of Pope county		

**Deadlines:**

Copy deadline for news: Thursday 8 a. m.  
Advertisement deadline: Wednesday 5 p. m.  
Newspaper is mailed: Thursdays

**Rates:**

Classified advertising: 2½c per word locally: 3c national  
Display advertising per inch: 40c locally, 49c national  
Subscription per year: \$2.50 in county. \$3.00 outside county

**Staff:**

Editorial: 2  
Back shop: 4  
Business: 1  
Total: 6  
Regional correspondents: 1 (flat rate payment plan)  
Editor takes photographs

**Names of Staff Members:**

Back shop foreman: L. D. Eldredge  
Business Mgr.: Harry L. Porter

**Services:**

No non-staff news services  
National advertising  
Mat service

**Dimensions:**

Page dimensions in inches: 22x16  
Number of col. per page: 7  
Width of col. (in picas): 12  
Depth of col. (in agate lines): 280  
Average number pages per issue: 8 or 10

**Plant Equipment:**

Cottrell newspaper press  
Two platen; three cylinder job presses  
One linotype  
Addressograph, press-type camera, bookbinding equipment; perforator, paper cutter, punches.

**Location and Mailing Information:**

Elizabethtown is located 85 miles southeast of Carbondale on State Highway 146 and is served by no railroads. Regular U. S. mail channels provide the quickest service between the two towns.

ELKVILLE

## Elkville Journal

Elkville  
Established 1922

Population 1200  
Jackson county

Ph. 4141  
Ind.- Rep.

Publisher: Victor I. Knowles  
Joint ownership

Editor: Victor I. Knowles  
**Published Friday**

Circulation (press run figures): 1400  
Area of distribution: Forty-mile square around Elkville

### Deadlines:

Copy deadline for news: Wednesday noon  
Advertisement deadline: Wednesday noon  
Newspaper is mailed: Thursday 3 p. m.

### Rates:

Classified advertising: 3c per word.  
Display advertising: local 35c, national 42c; political 50c  
Subscription per year: \$2

### Staff:

Editorial: 2  
Back shop: 3  
Business: 1  
Total: 6

### Names of Staff Members:

Adv. Mgr.: Mrs. V. I. Knowles  
Business Mgr.: Edward Knowles

Regional correspondents: 6 (subscription given as payment)  
Photographs are supplied by photographer-newsmen combination

### Services:

No non-staff news services  
Western Newspaper Union  
National advertising  
Mat service

### Dimensions:

Page dimensions: 13½ x 20 inches  
Number of col. per page: 6  
Width of col. (in picas): 13  
Depth of col. (in agate lines): 280  
Average number pages per issue: 10 and 12

### Plant Equipment:

Babcock flat bed newspaper press  
Two platen job presses; one cylinder  
One Intertype  
Kluge and Kelly  
Addressograph, press-type camera; photo processing equipment

### Location and Mailing Information:

Elkville is located 13 miles north of Carbondale on U. S. Highway 51, and is served by the I. C. railroad. The I. C. and C. & H. bus lines provide the quickest service between the two cities.

ENFIELD

## Enfield News

Enfield: Population 950 Ph. 24R3  
Established 1950 White County Ind.  
Publisher: Alden S. Baker Editor: Alden S. Baker  
Joint ownership **Published Thursday**  
Circulation (press run figures): 600  
Area or distribution: Eight-mile square in west-central portion of White county

### Deadlines:

Copy deadline for news: 4:30 Thursday  
Advertisement deadline: 12 noon Thursday  
Newspaper is mailed: 7:30 a. m. Friday

### Rates:

Classified advertising: 15c per agate line  
Display advertising per inch: 75c  
Subscription per year: \$1:50 local, \$2 out of town. \$3.25 outside state

### Staff:

Editorial: 3  
Back shop: 1  
Business: 2  
Total: 3  
Regional correspondents: 5 (No standard rate of payment)  
Photographs are supplied by photographer-newsmen combination

### Names of Staff Members:

Sports writer: Alden S. Baker  
Adv. Mgr.: Alden S. Baker  
Back shop foreman: Alden S. Baker  
Business Mgr.: Barbara Smythe

### Dimensions:

Page dimensions in inches: 7½x10  
Number of col. per page: 3  
Width of col. (in picas): 14  
Depth of col. (in agate lines): 140  
Average number pages per issue: 8

### Services:

No non-staff news gathering services  
National advertising  
Mat service

### Plant Equipment:

Gordon flat bed newspaper press  
One platen job press  
No linotype—newspaper is handset

### Location and Mailing Information:

Enfield is located 65 miles northeast of Carbondale on U. S. Highway 45 and is served by the L. & N. and a branch line of the Baltimore & Ohio. Quickest mailing service between the two cities is via I. C. to Ashley—L. & N. to Enfield.

Enfield Express 47  
Oct 1914 - 28 Dec 1916; 1 Feb 1917 -  
29 Dec 1921; Mar 1922 - Sep 1923  
restarted pub 1923 7

July 4, 1940 - May 11, 1944  
Feb., 1956 - date

**FAIRFIELD**

## Wayne County Press

Fairfield	Population 6,041	Ph. 5411
Established 1866	Wayne County	Rep.
Publisher; Mathews & Mathews		Editor: T. O. Mathews
Partnership		<b>Published Thursday</b>
Circulation: (press run figures): 4400		
Area of distribution: Greater Wayne county		

### Deadlines:

Copy deadline for news: Tuesday evening  
Advertisement deadline: Tuesday  
Newspaper is mailed: Wednesday noon

### Rates:

Classified advertising: 2c per word  
Display advertising per inch: 30c  
Subscription per year: \$2.00 and \$3.00

### Staff:

Editorial: 5  
Back shop: 7  
Total: 12  
Regional correspondents: 20 (no standard rate of payment)  
Staff photographer and commercial photographers supply photographs.

### Services:

No non-staff news services  
National advertising  
Mat service

### Dimensions:

Page dimensions: 7 col.x20 inches  
Number of col. per page: 7  
Width of col. (in picas): 12  
Depth of col. (in agate lines): 280  
Average number pages per issue: 12

### Plant Equipment:

Miehle newspaper press  
Five platen job presses  
Two linotypes

### Location and Mailing Information:

Fairfield is located 90 miles northeast of Carbondale on U.S. Highway 45, and is served by the Southern B. & O. railroad. Rail connection with the B. & O. provide the quickest service between the two cities.

July 30, 1914 - Dec. 26, 1918  
Feb., 1956 - date

**FAIRFIELD**

## **Wayne County Record**

Fairfield Population 6,041 Phone 140  
Established 1868 Wayne County Dem.  
Publisher: Wayne County Record Inc. Editor: E. R. Jones  
Privately owned **Published Thursday morning**  
Circulation (U. S. P. O. Statement) 3785  
Area of distribution: Greater Wayne county; adjoining portions of Clay, Marion, Jefferson, Hamilton, White, Edwards, and Richland counties.

### **Deadlines:**

Copy deadline for news: Wednesday 4 p. m.  
Advertisement deadline: Wednesday noon (unless previously arranged)  
Newspaper is mailed: Thursday morning and afternoon

### **Rates:**

Classified advertising: 2c per word, minimum 25c charge  
Display advertising per inch. local 30c; 35c under 10 inches; 42c foreign  
Subscription per year: \$2.50 Wayne county; \$3.00 outside county

### **Staff:**

Editorial: 3  
Business: 5  
Back shop: 6  
Total: 14

### **Names of Staff Members:**

Sports writer: J. L. Groves  
Advertising Mgr.: J. L. Groves  
Back shop foreman: "Bud" Allsay; Roy Marsh  
Business Mgr.: E. R. Jones

Rural correspondents: 27 (Rate of payment: Free subscription to paper) free lance and commercial photographers.

### **Services:**

No non-staff news services  
National advertising  
Mat service

### **Dimensions:**

Page dimensions (in inches: 17½ x 22½)  
Number of col. per page: 8  
Width of col. (in picas): 12  
Depth of col. (in agate lines): 294  
Average number of pages per issue: 10

### **Plant Equipment:**

Duplex Model A newspaper press  
Four platen job presses  
Two automatic (5-24's)  
Two linotypes  
Two addressographs and bookbinding equipment

### **Location and Mailing Information:**

Fairfield is located 90 miles northeast of Carbondale on U. S. Highway 45 and is served by the Southern—Big Four railroads. The Illinois Central railroad to Centralia thence to Fairfield is quickest mailing route between the two cities.

**FARINA**

## **The Farina News**

Farina Population 950 Ph. 107  
Established 1873 Fayette county Ind  
Publisher: Thomas G. Dew Editor: Thomas G. Dew  
Privately owned **Published Thursday**  
Circulation (press run figures): 1100  
Area of distribution: Generally distributed in portions of Fayette, Marion,  
Clay and Effingham counties.

### **Deadlines:**

Copy deadline for news: Wednesday 11 a. m.  
Advertisement deadline: Tuesday 11 a. m.  
Newspaper is mailed: Thursday morning and afternoon

### **Rates:**

Classified advertising. 2c per word  
Display advertising per inch: 49c national; 35 local  
Subscription per year. \$2.00

### **Staff:**

Editorial: 3  
Back shop: 4  
Business: 3  
Total: 4  
Regional correspondents: 12  
Photographer-newsmen combination is source of photographs.

### **Names of Staff Members:**

Sports writer: Thomas G. Dew  
Adv. Mgr.: Thomas G. Dew  
Back shop foreman: Norville Bollhorst  
Business Mgr.: Thomas G. Dew

### **Services:**

No non-staff news services  
National advertising  
Mat service

### **Dimensions:**

Page dimensions in inches: 14x22  
Number of col. per page: 6  
Width of col. (in picas): 12  
Depth of col. (in agate lines): 275  
Average number pages per issue: 8

### **Plant Equipment:**

Whitlock newspaper press  
Three platen; one cylinder job presses  
Two linotypes

### **Location and Mailing Information:**

Farina is located 110 miles northeast of Carbondale on State Highway 37, and is served by the I. C. railroad. The I. C. provides the quickest service between the two cities.

Jan, 1956 - date

**FLORA**

## Daily News-Record

Flora Population 6300 Ph. 125 & 245  
 Established: wk. 1880; daily 1930 Clay County Ind.  
 Publisher: Flora Record Pub. Co. Editor: Pauline J. Colborn  
 Corporation **Published daily except Sat. and Sun.**  
 Circulation (press run figures): 3590  
 Area of distribution: Greater Clay county; portions of Fayette, Marion,  
 Wayne counties.

### Deadlines:

Copy deadline for news: Noon daily  
 Advertisement deadline: previous day  
 Newspaper is mailed: each afternoon

### Rates:

Classified advertising: 3c per word  
 Display advertising per inch: 50c  
 Subscription per year: \$5.00

### Staff:

Editorial: 3  
 Back shop: 6  
 Business: 1  
 Total: 10

### Names of Staff Members:

Sports writer: Wallace McGrew  
 Adv. Mgr.: G. Earl Wood  
 Business Mgr.: G. Earl Wood

Regional correspondents. 25 (no standard rate of payment)  
 Commercial photographers supply photographs

### Services:

United Press  
 National advertising  
 Mat service

### Dimensions:

Page dimensions (in inches): 17½ x 22  
 Number of col. per page. 8  
 Width of col. (in picas): 12  
 Depth of col. (in agate lines): 280  
 Average number pages per issue: 6

### Plant Equipment:

Goss Comet newspaper press  
 Two platen; one vertical job presses  
 Two linotypes  
 Bookbinding equipment

### Location and Mailing Information:

Flora is located 125 miles northeast of Carbondale on U. S. Highway 50,  
 and is served by the B. & O. railroad. Rail connections with the G. M. & O.  
 provide the quickest service between the two cities.



## Flora Sentinel

Flora Population 6300 Ph. 400 & 359  
 Established 1939 Clay county Ind.-Rep.  
 Publisher: Charles A. Crowder Editor: Charles A. Crowder  
 Privately owned **Published Tuesday and Friday**  
 Circulation (press run figures): 2,578  
 Area of distribution: Greater Clay, Wayne, Richland, Lawrence and Edwards counties; portions of Fayette, Marion, Jefferson, Wabash, Effingham, Jasper, and Crawford counties.

### Deadlines:

Copy deadline for news: Monday noon and Thursday noon  
 Advertisement deadline. Monday 9 a. m. and Thursday 9 a. m.  
 Newspaper is mailed: Tuesday and Friday mornings

### Rates:

Classified advertising: 3c per word first insertion; 2c for following insertions.  
 Display advertising per inch: 40c  
 Subscription per year; \$2 Clay and adjoining counties; \$3 elsewhere

### Staff:

Editorial: 1  
 Back shop: 3  
 Business: 2  
 Writers and carriers: 19  
 Regional correspondents: 11 (No standard rate of payment)  
 Free lance and commercial photographers supply photographs

### Names of Staff Members:

Sports writer: Chas. Crowder, Jr.  
 Adv. Mgr.: Chas. A. Crowder, Sr.  
 Back shop foreman. Florence Eighner  
 Business Mgr.: Dorothy A. Crowder

### Services:

No non-staff news services  
 National advertising  
 Mat service

### Dimensions:

Number of col. per page: 8  
 Width of col. (in picas): 12  
 Depth of col. (in agate lines): 280  
 Average number pages per issue: 4 Tuesday; 8 Friday

### Plant Equipment:

Babcock Optimus No. 10  
 Two cylinder job presses  
 One Intertype

### Location and Mailing Information:

Flora is located 125 miles northeast of Carbondale on U. S. Highway 50 and is served by the B. & O. railroad. Rail connections with the G. M. & O. provide the quickest service between the two cities.

**Freeburg Tribune**

Freeburg Population 1500 Ph. 88  
 Established 1897 St. Clair county Ind.  
 Publisher: Walter E. Smith Editor: Walter E. Smith  
 Privately owned Published Friday  
 Circulation (press run figures) 1500  
 Area of distribution: Greater St. Clair county and portions of Clinton Wash-  
 ington and Monroe counties.

**Deadlines:**

Copy deadline for news: Wednesday  
 Advertisement deadline: Wednesday  
 Newspaper is mailed: Friday morning

**Rates:**

Classified advertising: 3c per word  
 Display advertising per inch: 25c local; 35 national  
 Subscription per year: \$2.00

**Staff:**

Editorial: 2  
 Business: 2  
 Back shop: 1  
 Total: 2

Regional correspondents: None

Photographs are supplied by subscribers and staff photographers.

**Names of Staff Members:**

Sports writer: Walter E. Smith  
 Adv. Mgr.: Walter E. Smith  
 Back shop foreman: Walter E. Smith  
 Business Mgr.: Mrs. Walter E. Smith

**Services:**

Page dimensions in inches: 20 inches x 6 col.  
 Number of col. per page: 6  
 Width of col (in picas): 13  
 Depth of col. (in agate lines) 270  
 Average number pages per issue: 8

**Plant Equipment:**

Babcock flatbed press  
 2 platen job presses  
 One linotype

**Location and Mailing Information:**

Freeburg is located 75 miles northwest of Carbondale on State Highway 13 and is served by I. C. railroad and the C & H bus line. Both the I. C. R. R. and the C & H bus line provide quick mailing service between the two cities.

Dec. 13, 1917 - Jan. 22, 1920  
July 22, 1970 - date

## GOLCONDA

# Herald-Enterprise

Golconda	Population 1300	Ph. 58
Established 1858	Pope County	Ind.
Publisher: Rodney J. Brenner		Editor: Rodney J. Brenner
Corporation		<b>Published Thursday</b>
Circulation (press run figures) 1875		
Area of distribution: Greater Pope county and portions of Hardin, Saline, Johnson, and Massac counties.		

### Deadlines:

Copy deadline for news: Wednesday noon  
 Advertisement deadline: Wednesday 10:00 a. m.  
 Newspaper is mailed: Thursday a. m.

### Rates:

Classified advertising rates: 2c per word, min 40c  
 Display advertising rates: local 35c; national 42c  
 Subscription per year: County \$2.00; outside \$2.50

### Staff:

Editorial: 1  
 Business: 1  
 Back shop: 3  
 Reporters: 1  
 Total: 3

### Names of Staff Members:

Sports writer: R. J. Brenner  
 Adv. Mgr.: Lula B. Asher  
 Back shop foreman: Walter Prince  
 Business Mgr.: Lulu B. Asher

Regional correspondents: 14 (Rate of payment—subscription)  
 Photographs are supplied by photographer-newsmen combination.

### Services:

WNU Sports Feature-Comics  
 Mat service  
 National advertising

### Dimensions:

Page dimensions in inches: 15x22  
 Number of col. per page: 6  
 Width of col. (in picas): 13  
 Depth of col. (in agate lines): 280  
 Average number pages per issue: 8

### Plant Equipment:

Cranston cylinder flatbed  
 Three platen job presses  
 One linotype  
 Argus C-3

### Location and Mailing Information:

Golconda is located about 65 miles southeast of Carbondale on State Highway 146 and is served by the Illinois Central railroad. The I. C. provides the quickest mailing service between the two cities.

# **The Gorham Tower**

Gorham Population 600 Ph 3401  
Established 1949 Jackson county Democratic  
Publisher: Leonard M. Johnson Editor: Leonard M. Johnson  
Privately owned **Published Tuesday**  
Circulation (press run figures) 250  
Area of distribution: 95 square miles from southwestern Jackson county.

## **Deadlines:**

Copy deadline for news: Monday noon  
Advertisement deadline: Friday noon  
Newspaper is mailed: Tuesday noon

## **Rates:**

Classified advertising: 10c per line  
Display advertising: 35c per inch  
Subscription per year: \$2.00

## **Staff:**

Editorial: 2  
Business:  
Back shop: 2  
Total: 4

## **Names of Staff Members:**

Back shop foreman: Lavern Egbert  
Business Mgr.: Leonard Johnson

Regional correspondents: 3 (no standard rate of payemnt)  
Photographs are supplied by free lance photographers

## **Services:**

No non-staff news services used  
Mat service  
National advertising

## **Dimensions:**

Page dimensions 16 inches x 5 col.  
Number of col. per page: 5  
Width of col. (in picas): 12  
Depth of col. (in agate lines): 230  
Average number pages per issue: 6

## **Plant Equipment:**

The **Tower** is printed at the **Ava Citizen**

## **Location and Mailing Information:**

Gorham is located 22 miles west of Carbondale on State Highway 3 and is served by the Mo. Pac. railroad. Rail connections with the I. C. and the Mo. Pac. provide the quickest mailing service between the two cities.

## GRANITE CITY

# Naroden Glas

Granite City

Population 29,343

Ph. T.C. 6-1591  
1814 Delmar Ave.

Established 1907

Madison County

Democratic

Publisher: Mrs. V. Stephanoff

Editor: Vasil Stephanoff

Privately owned

**Published Thursday**

Circulation (press run figures) 1650

Area of distribution: Central Madison county; portions of Bond and St. Clair counties.

### Deadlines:

Copy deadline for news: Thursday noon

Advertisement deadline: Wednesday

Newspaper is mailed: Friday

### Rates:

Classified advertising: 2c per word

Display advertising per inch: 30c local; 35c national

Subscription per year: \$4.00

### Staff:

Editorial: 2

Back shop: 2

Business: 1

Total: 5

Regional correspondents: 10 (no standard rate of payment)

Photographs are supplied by no regular method

### Names of Staff Members:

Adv. Mgr.: F. Kaldor

Back shop foreman: V. Stephanoff

Business Mgr.: V. Stephanoff

### Services:

News Service: Western Newspaper Union

Mat service

National advertising

### Dimensions:

Page dimensions: 15½ x 21

Number of col. per page: 7

Width of col. (in picas): 13

Depth of col. (in agate lines): 287

Average number of pages per issue: 4 to 6

### Plant Equipment:

Cottrel and Omaha folder newspaper press

One platten (10x15) job press

One linotype

Graphotype

### Location and Mailing Information:

Granite City is located about 100 miles northwest of Carbondale on U. S. Highway 61A and is served by seven major railroad lines. Connections with the I. C. provides the quickest mailing service between the two cities.

## GRANITE CITY

# Granite City Press-Record

Granite City, Madison Population: Granite City 29,343 Ph. Tri-City  
and Venice Madison 7,845; Venice 6,243 6-2000 & 6-2001  
Established 1903 Madison County Ind.  
Publisher; Quad-City Publishing Co. Editor: C. E. Townsend  
Corporation **Published Mondays and Thursdays**  
Circulation (press run figures): 12,380  
Area of distribution: Southwestern Madison county

### Deadlines:

Copy deadline for news: 1 p. m. press day  
Advertisement deadline: Mon. for Thurs.—Thurs. for Mon.  
Newspaper is mailed: out of town Mon. and Thurs. All local sales by  
newsboys.

### Rates:

Classified advertising: 4c per word (\$1.40 inch)  
Display advertising per inch: Local \$1.05, national \$1.26  
Subscription per year. \$5.00 plus postage

### Staff:

Editorial: 5  
Business: 4  
Back shop: 12  
Total: 34

### Names of Staff Members:

Sports writer: Donald Maylath  
Adv. Mgr.: Al Mueller  
Back shop foreman: J. L. Reber  
Business Mgr.: C. E. Townsend

Regional correspondents. 9 (rate of payment per col. inch 15c)  
Photographs are supplied by photographer-newsmen combination; free  
lance photographers, and commercial photographers.

### Services:

Editor's Copy Western Newspaper Union  
King Features Gordon Features  
Mat service National advertising

### Dimensions:

Overall page size (in inches): 16x21  
Number of col. per page: 8  
Width of col. (in picas): 12  
Depth of col. (in agate lines): 294  
Average number pages per issue: 18

### Plant Equipment:

24-page Hoe rotary press  
One platen; two cylinder job presses  
Four Intertypes  
Two press-type cameras. Ludlow, Elrod, Stero, paper cutter, perforator  
Fairchild Engraver, Recordak Microfilm Viewer

### Location and Mailing Information:

Granite City is located about 100 miles northwest of Carbondale on U. S.  
Highway 61A and is served by seven major railroad lines. Connection with  
the I. C. provides the quickest mailing service between the two towns.

Dec. 6, 1917 - date

GRAYVILLE

## Mercury-Independent

Grayville Population 2600 Ph. 130  
Established 1856 White County Ind.  
Publisher: N. B. Seil Editor: W. S. Seil  
Joint ownership **Published Thursday**  
Circulation (press run figures): 1800  
Area of distribution: Northern half White county; portions of Edwards and Wabash counties.

### Deadlines:

Copy deadline for news: Wednesday afternoon  
Advertisement deadline: Tuesday noon  
Newspaper is mailed: Thursday morning

### Rates:

Classified advertising: 1½c per word; 35c minimum  
Display advertising per inch: 56c-40c  
Subscription per year: \$2.00

### Staff:

Editorial: 3  
Back shop: 3  
Business: 1  
Total: 7

### Names of Staff Members:

Sports writer: W. S. Seil  
Adv. Mgr.: N. B. Seil  
Business Mgr. N. B. Seil

Regional correspondents: 15 (no standard rate of payment per col. inch).

Photographs are supplied by photographer-newsmen combination.

### Services:

No non-staff news services  
National advertising  
Mat service

### Dimensions:

Page dimensions (in inches): 14½ x 20½  
Number of col. per page: 7  
Width of col. (in picas): 12  
Depth of col. (in agate lines): 280  
Average number pages per issue: 8

### Plant Equipment:

Whitlock newspaper press  
Two platen job presses  
One linotype  
One offset press  
Press-type camera, photo processing equipment, bookbinding equipment.

### Location and Mailing Information:

Grayville is located 90 miles northeast of Carbondale on State Highway 1, and is served by the I. C. and N. Y. C. railroads. The I. C. provides the quickest service between the two cities.

## GREENVILLE

# The Greenville Advocate

Greenville Population 4500 Ph. 44 or 77  
Established 1858 Bond County Ind.-Rep.  
Publishers: Geo. L. Denny, H. A. Hubbard, Editor: George L. Denny  
John W. Brewer, Leo F. Reeves

Partnership **Published Monday and Thursday afternoons**

Circulation (press run figures): 4022

Area of distribution: Greater Bond, Madison and Clinton counties, portions of Fayette, Marion, St. Clair, Montgomery, Macoupin, counties in Illinois, and St. Louis County in Missouri.

### Deadlines:

Copy deadline for news: Monday-Thursday 10 a. m.

Advertisement deadline: Tuesday for Thurs. paper and Friday for Monday paper.

Newspaper is mailed: 2 to 4 on days of publication.

### Rates:

Classified advertising: 15c per line, minimum 30c; 20c per line black face, minimum 40c

Display advertising per inch: National 56c; local 40c

Subscription per year: \$4., \$2.25 (6 mo. ); \$1.35 (3 mo.)

Regional correspondents. 6 (rate of payment per col inch 50c)

Photographs are supplied by photographer-newsmen combination; freelance photographers, and commercial photographers.

### Staff:

Editorial: 3

Back shop: 9

Business: 4 (overlaps back shop)

Carrier boys: 11

Total: 13

### Names of Staff Members:

Sports writer: George L. Denny

Adv. Mgr.: Henry A. Hubbard

Back shop foreman: John W. Brewer

Business Mgrs: Denny & Hubbard

### Dimensions:

Page dimensions (in inches): 16 $\frac{5}{8}$ x19 $\frac{3}{4}$

Number col. per page: 7

Width of col. (in picas): 13

Depth of col. (in agate lines): 276 $\frac{1}{2}$

Average number pages per issue: Monday paper 8 to 12; Thursday 12 to 16 and up.

### Services:

No non-staff news services

National advertising

Mat service

### Plant Equipment:

Cox-O-Type web flat bed newspaper press

Job presses: 2 platen; 1 cylinder; Kluge 12x18

Two linotypes

### Location and Mailing Information:

Greenville is located 100 miles north of Carbondale on State Highway 127, and is served by the Pennsylvania railroad. The C. & H. bus lines provide the quickest service between the two cities.



## HARRISBURG

# The Daily Register

Harrisburg Population 11,865 Ph. 75, 9, & 224  
Established 1869 Saline County Ind.  
Publisher: Register Pub. Co., Daisy M. Seright, pres. Editor: Curtis G. Small  
Corporation **Published daily except Sunday**  
Circulation: (press run figures): 7,100  
Area of distribution: Greater Saline, Gallatin, Pope and Hardin counties.  
Portions of Hamilton, White, Johnson, and Williamson counties.

### Deadlines:

Copy deadline for news: 9 a. m. day of publication  
Advertisement deadline: 2:30 p. m. day preceding publication  
Newspaper is mailed: Daily at 3 p. m.

### Rates:

Classified advertising: 15c per line, discount for cash  
Display advertising per inch: 70c political and transient; local 60c  
5½c per line national  
Subscription per year: \$6 by mail in Saline area; \$8 elsewhere.

### Staff:

Editorial: 5  
Back shop: 20  
Business: 5  
Total: 30

### Names of Staff Members:

Sports writers: Tim Turner & Bill Melton  
Adv. Mgr.: Joseph Jackson  
Back shop foreman: Bill Epperheimer  
Business Mgr.: Samuel Smith

Regional correspondents: 5 (Rate of payment per col. inch 10c)  
Photographs are supplied by photographer-newsmen combination, and commercial photographers

### Services:

United Press  
NEA, United Features, Church Features.  
National advertising  
Mat service—Stamps Conhaim and Metro

### Dimensions:

Page dimensions (in inches): 18x22  
Number of col. per page: 8  
Width of col. (in picas): 12  
Depth of col. (in agate lines): 294  
Average number pages per issue: 8

### Plant Equipment:

Flatbed 8-page newspaper press  
Four platen job presses  
Four linotypes  
Ludlow; Elrod; addressograph; press-type camera; mimeograph

### Location and Mailing Information:

Harrisburg is located 40 miles east of Carbondale on State Highway 13 and is served by the New York Central railroad. C. & H. Coach lines and regular U. S. mail service provides the quickest service between the two cities.

## Highland Journal

Highland

Population 4237

Ph. 42

Established 1895

Madison County

Ind.

Publisher: Vernon W. Ittner

Editor: Vernon W. Ittner

Privately owned

**Published Thursday**

Circulation (press run figures): 1550

Area of distribution: Ten-mile radius out of Highland. Includes portions of Madison, Bond, St. Clair and Clinton counties.

### Deadlines:

Copy deadline for news: Wednesday 4:00 p. m.

Advertising deadline. Mats Tuesday a. m.; other ads Wednesday Morning  
Newspaper is mailed Thursday morning

### Rates:

Classified advertising: 10c per line

Display advertising per inch: national 49c; local 35c

Subscription per year: \$2.50

### Staff:

Editorial: 1

Back shop: 5

Business: 1 (same as editorial)

Total: 6

Regional correspondents: 7 (no standard rate of payment)

Photographs are supplied by photographer-newsmen combination; free lance and commercial photographers.

### Names of Staff Members:

Sports writer: V. W. Ittner

Adv. Mgr.: V. W. Ittner

Back shop foreman: Frank Engle

Business Mgr.: V. W. Ittner

### Dimensions:

Page dimensions in inches: 14x20

Number of col. per page: 7

Width of col. (in picas): 12

Depth of col (in agate lines): 283½

Average number pages per issue. 12

### Services:

No non-staff news services

National advertising

Mat service

### Plant Equipment:

Miehle 2/0 newspaper press

One cylinder; three platen job presses

Two linotypes

Addressograph, press-type camera, newspaper folder, folder, stapler, (stitcher-pr)

### Location and Mailing Information:

Highland is located 108 miles northwest of Carbondale just south of U. S. Highway 40, and is served by the Pennsylvania railroad. Rail connections with the Pennsylvania provide the quickest service between the two cities.

Jan., 1956 - date

**HIGHLAND**

**News Leader**

Highland	Population 4,237	Ph. 28
Established 1901	Madison county	Rep.
Publisher: Edgar Hoffman, Oscar Hoffman; Russell Hoffman		
Editor: Russell D. Hoffman		

Partnership **Published Wednesday**

Circulation (press run figures): 3563

Area of distribution: Seven-mile radius in four directions out of Highland. Includes portions of Madison, Bond and Clinton counties.

**Deadlines:**

Copy deadline for news: Tuesday 11:00 a. m.  
 Adv. deadline: Saturday 5 p.m.  
 Newspaper is mailed: Tuesday 5 p. m.

**Rates:**

Classified advertising: 10c per line  
 Display advertising per inch: 45c local; 56c national  
 Subscription per year: \$2.50

**Staff:**

Editorial: 1  
 Backshop: 7  
 Total: 8

**Names of Staff Members:**

Sports writer: Russell Hoffman  
 Adv. Mgr.: Edgar Hoffman  
 Backshop foreman: Edgar Hoffman  
 Business mgr.: Russell Hoffman

Regional correspondents: 8 (Rate of payment per col. inch 5c)  
 Commercial photographers supply photographs

**Services:**

No non-staff news services  
 National advertising  
 Mat service

**Dimensions:**

Page dimensions (overall in inches): 140 (20"x7 col.)  
 No. col. per page: 7  
 Width of col. (in picas): 12  
 Depth of col. (in agate lines): 280  
 Av. no. pages per issue: 16

**Plant Equipment:**

Miehle newspaper press  
 Four platen job presses  
 One Kluge automatic job press  
 One automatic folder  
 Two linotypes

**Location and Mailing Information:**

Highland is located 108 miles northwest of Carbondale just south of U. S. Highway 40, and is served by the Pennsylvania railroad. Rail connections with the Pennsylvania provide the quickest service between the two cities.

Jan., 1956 - date

INA

## The Ina Observer

Ina  
Established 1908  
Publisher: Wayne Coffman  
Privately owned  
Circulation (press run figures): 625  
Area of distribution: Greater Jefferson and Franklin counties

Population: 500  
Jefferson county

No Phone  
Ind.  
Editor: Hayne Coffman  
**Published Thursday**

### Deadlines:

Copy deadline for news: Tuesday  
Adv. deadline: Tuesday  
Newspaper is mailed: Thursday 9 a.m.

### Rates:

Classified adv.: 2c per word  
Display adv. per inch: 30c  
Subscription per year: \$1.50

### Staff:

One man shop  
No regional correspondent—does not use photographs

### Services:

No non-staff news services  
National advertising  
Mat service

### Dimensions:

Page dimensions (overall in inches): 120  
No. col. per page: 6  
Width of col. (in picas): 13  
Depth of col. (in agate lines): 280  
Av. no. pages per issue: 4

### Plant Equipment:

Campbell newspaper press  
Two cylinder job presses  
No linotype—newspaper is hand set

### Location and Mailing Information:

Ina is located 40 miles northeast of Carbondale on State Highway 37, and is served by the C. & E. I. railroad. Connections with the C. & E. I. via Marion provides the quickest services the two cities.

# JOHNSTON CITY

## Johnston City Progress

Johnston City                      Population 4,680                      Ph. 2011  
Established 1897                      Williamson County                      Ind.-Rep.  
Publisher: R. W. Jones                      Editor: Maurice L. Jones  
Joint ownership                      **Printed Thursday—Dated Friday**  
Circulation: (press run figures). 1,025  
Area of distribution: Greater northeastern corner of Williamson county.

### Deadlines:

Copy deadline for news: Thursday 9 a. m.  
Adv. deadline: Wednesday noon.  
Newspaper is mailed: Thursday afternoon.

### Rates:

Classified adv. 3c per word; 25c minimum  
Display advertising per inch: 42c  
Subscription per year: \$2.

### Staff:

Total editorial, back shop, business staffs: 3  
No regional correspondents  
Photographs are supplied by no regular method

### Services:

No non-staff news services  
National advertising  
Mat service

### Dimensions:

Page dimensions in inches: 15x22  
Number of col. per page: 6  
Width of col. (in picas). 13  
Depth of col. (in agate lines): 273  
Average number pages per issue: 6

### Plant Equipment:

Flat-bed cylinder newspaper press  
One platen press  
One linotype

### Location and Mailing Information:

Johnston City is located 18 miles northeast of Carbondale on State Highway 37, and is served by the Mo. Pacific; Chicago & Eastern Illinois railroads. Regular U. S. mail channels provide the quickest service between the two cities.

**KINMUNDY**

## **The Kinmundy Express**

Kinmundy  
Established 1883  
Publisher: J. N. Vallow  
Privately owned

Population 1015  
Marion County

Phone 5  
Ind. Republican  
Editor: J. N. Vallow  
**Published Thursday**

Circulation: (press run figures). 1056

Area of distribution: Eight-mile radius in northeast corner Marion county.

### **Deadlines:**

Copy deadline for news: Wednesday morning 8 a.m.

Advertisement deadline: Wednesday noon

Newspaper is mailed: Thursday noon

### **Rates:**

Classified advertising. 10c per line

Display advertising per inch: 42c

Subscription per year: \$2.00

### **Staff:**

Editorial: 1

Business: 1

Back shop: 1

Society: 1

Total: 2

Regional correspondents. 10 (Rate of payment per col. inch 3c)

Photographs are supplied by: Free lance photographers, commercial photographers.

### **Names of Staff Members:**

Sports writer: J. N. Vallow

Advertising Mgr.: J. N. Vallow

Back shop foreman. Herman Allen

Business Mgr.: J. N. Vallow

### **Services:**

Non non-staff news services

Mat service

National advertising

### **Dimensions:**

Overall page size (in inches): 15x22

Number of col. per page: 6

Width of col. (in picas): 13

Depth of col (in agate lines): 280

Average number pages per issue: 4

### **Plant Equipment:**

Walter Scott newspaper press

Two platen job presses

One cylinder job press

One linotype

### **Location and Mailing Information:**

Kinmundy is located 125 miles northeast of Carbondale on State Highway 37 and is served by the I. C. and C. & E. I. railroads. The Illinois Central railroad offers the quickest service between the two cities.

**LAWRENCEVILLE**

**Lawrence County News**

Lawrenceville Population 7500 Ph. 52  
Established 1893 Lawrence County Ind.  
Publisher: S. E. Jones Editor: S. E. Jones  
Privately owned Published Thursday  
Circulation: (press run figures). 2275  
Area of distribution. Greater Lawrence and adjoining counties and parts of  
Knox county of Indiana.

**Deadlines:**

Copy deadline for news: Wednesday noon  
Advertisement deadline. Tuesday  
Newspaper is mailed: Wednesday p. m.

**Rates:**

Classified advertising: 2c per word  
Display advertising per inch: 56c national  
Subscription per year: \$2 and \$3.00

**Staff:**

Editorial: 1  
Business: 1  
Back shop: 5  
Sports writer.  
Total 7

**Names of Staff Members:**

Advertising Mgr.: S. E. Jones  
Back shop foreman: T. Earl Cary  
Business Mgr. S. E. Jones

Regional correspondents: 14 (no standard rate of payment)  
Photographs are supplied by no regular method

**Services:**

Non no-staff news services  
Advertising mat service  
National advertising

**Dimensions:**

Page dimensions in inches. 19¾ x 6 col.  
Number of col. per page: 6  
Width of col. (in picas). 13  
Depth of col. (in agate lines): 280  
Average number of pages per issue: 10½

**Plant Equipment:**

Babcock newspaper press  
Two platen job presses  
One linotype

**Location and Mailing Information:**

Lawrenceville is located about 130 miles northeast of Carbondale on U. S. Highway 50 and is served by the B. & O. railroad. The B. & O. provides the quickest mailing service between the two cities.

LAWRENCEVILLE

## The Daily Record

Lawrenceville Population 7500 Ph. 42  
Est.: 1849 (wk): 1923 (daily) Lawrence County Rep.  
Publisher. George C. Armstrong Editor: G. C. Armstrong, Jr.  
Privately owned **Published daily except Sunday**  
Circulation (press run figures): 3327  
Area of distribution: Greater Lawrence county: Portions of Richland, Wabash,  
and Crawford counties in Illinois. Knok county in Indiana.

### Deadlines:

Copy deadline for news: 12 noon daily  
Advertisement deadline: 9:00 a. m.  
Newspaper is mailed: 4:30 p. m.

### Rates:

Classified advertising: 3c per word, minimum 10 words  
Display advertising per inch: 56 national; 40c local; 50c political.  
Subscription per year: \$4.50 (mail in county); 20c by carrier weekly.

### Staff:

Editorial. 3  
Back shop: 10  
Business staff: 3  
Adv. dept.: 2  
Branch office mgrs: 3  
Total: 21  
Regional correspondents: 7 (no standard rate of payment)  
Photographs are supplied by commercial photographers

### Dimensions:

Page dimensions: 17x20  
Number of col. per page: 8  
Width of col. (in picas): 12  
Depth of col. (in agate lines): 280  
Average number pages per issue: 6-8

### Services:

United Press  
Int. Natl. News and King Features  
Mat service  
National advertising

### Plant Equipment:

Duplex Flat Bed newspaper press  
Three linotypes  
B & N Strip caster, Ludlow  
Addressograph  
Four platen job presses

### Location and Mailing Information:

Lawrenceville is located 130 miles northeast of Carbondale on U. S. Highway 50, and is served by the B & O and N. Y. Central railroads. Rail connections with N. Y. Central and B. & O. provide the quickets service between the two cities.



Jan., 1945 - date

LEBANON

## The Advertiser

Lebanon Population 2453 Ph. 98  
Established 1911 St. Clair County Ind.  
Publisher: Leon Church Editor: Leon Church  
Privately owned **Published Thursday**  
Circulation: (press run figures) 840  
Area of distribution: Northeast portion of St. Clair county and parts of Clinton and Madison counties.

### Deadlines:

Copy deadline for news: Wednesday  
Advertisement deadline. Tuesday  
Newspaper is mailed: Thursday

### Rates:

Classified advertising: 10c per line; min. 30c av. 5 words  
Display advertising per inch: 36c  
Subscription per year. \$2.50

### Staff:

Editorial: 2  
Business: 2  
Back shop: 3  
Total: 7

### Names of Staff Members:

Advertising and  
Business Mgr.: Leon H. Church

Regional correspondents: 1 (Rate of payment per col. inch 5c)  
Photographs the supplied by free lance photographers

### Services:

No non-staff news services used  
Mat service  
National advertising

### Dimensions:

Page dimensions in inches: 15x22  
Number of col. per page: 6  
Width of col. (in picas). 13  
Depth of col: (in agate lines): 280  
Average number of pages per issue: 6

### Plant Equipment:

Babcock Reliance newspaper press  
Job presses: One platen; one cylinder  
One linotype

### Location and Mailing Information:

Lebanon is located 115 miles northwest of Carbondale on U. S. Highway 50 and is served by the B. & O. railroad. Rail connections with the B. & O. provide the quickest mailing service between the two cities.

LOUISVILLE

## Clay County Republican

Louisville  
Established 1894  
Publisher: Paul W. Gibson  
Corporation  
Circulation: (press run figures):1886  
Area of distribution: Greater Clay County

Population 1150  
Clay County

Ph 31  
Independent  
Manager: C. H. Clifton  
**Published Thursday**

### Deadlines:

Copy deadline for news: Thursday 9 a. m.  
Advertisement deadline: Thursday 9 a. m.  
Newspaper is mailed: Thursday

### Rates:

Classified advertising rates: 7c per line  
Display advertising per inch: 35c county; 49c national  
Subscription per year. \$2  
No regional correspondents  
Photographs are supplied by no regular methods

### Services:

No non-staff news services used  
Mat service  
National advertising

### Dimensions:

Page dimensions in inches: 14x24  
Number of col. per page: 6  
Width of col. (in picas): 12  
Depth of col. (in agae lines): 280  
Average number pages per issue: 8

### Plant Equipment:

One linotype  
1 newspaper press  
3 job presses  
Electric casting box, metal saw, router, job equipment

### Location and Mailing Information:

Louisville is located about 110 miles northeast of Carbondale on U. S. Highway 45 and is served by the B & O railroad. Rail connections with the B & O and the I. C. provide the quickest mailing service between the two cities.

**MADISON**

## **Republic & Tribune**

Madison  
Established 1903  
Publisher: Irene Hilt  
Privately owned

Population 8000  
Madison County

Ph. Tri-City 6-1024  
Independent  
Editor: Irene Hilt  
**Published Thursday**

Circulation (press run figures). 600

Area of distribution: Southwestern Madison county and northwestern portion of St. Clair county.

### **Deadlines:**

Copy deadline for news: Wednesday p. m.  
Advertisement deadline: Wednesday noon  
Newspaper is mailed Thursday 4 p. m.

### **Rates:**

Classified advertising rates: 10c per line  
Display advertising rates: 50c per inch  
Subscription per year: \$2.00  
No regional correspondents  
Photographs are supplied by no regular method

### **Services:**

No non-staff news services  
National advertising  
Mat service

### **Dimensions:**

Page dimensions in inches: 140 (overall)  
Number of col. per page: 7  
Width of col. (in picas): 12  
Depth of col. (in agate lines): 280  
Average number pages per issue: 4 to 6

### **Plant Equipment:**

Premier newspaper press  
Two platen job presses  
One linotype

### **Location and Mailing Information:**

Madison is located about 116 miles northwest of Carbondale on U. S. Highway 66 and is served by several leading railroad lines. Rail connections with the I. C. provide the quickest mailing service between the two cities.

1914 - Jan, 1956  
June 7, 1956 - date

**MARION**

## **Marion Weekly Leader**

Marion Population 12,000 Ph. 1000  
Established 1868 Williamson County Rep.  
Publisher: Oldham Paisley Editor: Oldham Paisley  
Corporation **Published Thursday**  
Circulation (press run figures). 250  
Area of distribution: Central Williamson county  
Printed by **Marion Daily Republican**

### **Deadlines:**

Copy deadline for news: Tuesday  
Advertisement deadline: Tuesday  
Newspaper is mailed: Wednesday

### **Rates:**

Classified advertising rates: 3c per word (national 5c)  
Display advertising rates: 35c per inch  
Subscription per year. \$2.00

### **Staff:**

Members of editorial,  
business, and back  
shop total 25

### **Names of Staff Members:**

Sports writer: Homer Butler  
Adv. Mgr.: Mrs. Audrey Lockhart  
Back shop foreman: Edwin Soldner  
Business Mgr.: Oldham Paisley

Regional correspondents: None  
Photographs are supplied by free lance and commercial photographers.

### **Services:**

NEA-United Features.  
Mat service  
National advertising

### **Dimensions:**

Page dimensions in inches. 17½ x 22  
Number of col. per page: 8  
Width of col. (in picas): 12  
Depth of col. (in agate lines): 287  
Average number pages per issue: 6 to 8

### **Plant Equipment:**

Goss Comet  
Four platen job presses  
Three linotypes; 1 intertype  
Linecasting machine, Addressograph and Multilith

### **Location and Mailing Information:**

Marion is located 20 miles east of Carbondale on State Highway 13 and is served by the C. & E. I. The C. & E. I. and I. C. railroads provide the quickest mailing service between the two cities.

Scattered issues 1940-45  
Oct. 1948 - date

MARION

## Marion Daily Republican

Marion Population 12,000 Ph. 1000  
Established 1908 Williamson County Republican  
Publisher: Oldham Paisley Editor: Oldham Paisley  
Corporation **Published daily except Sunday**  
Circulation (press run figures): 4,012  
Area of distribution: Greater Williamson county and portions of Jackson, Franklin, Saline and Johnson counties.

### Deadlines:

Copy deadline for news. 2 p. m.  
Advertisement deadline. 5 p. m. day before insertion  
Newspaper is mailed each evening except Sunday

### Rates:

Classified advertising rates: 3c per word (National 5c)  
Display advertising rates: 35c and 70c per inch.  
Subscription per year: \$9.50 city; \$6.00 mail

### Staff:

Members of editorial,  
business, and back  
shop total 25

### Names of Staff Members:

Sports writer. Homer Butler  
Adv. Mgr.: Mrs. Audrey Lockhart  
Back shop foreman: Edwin Soldner  
Business Mgr.: Oldham Paisley

Regional correspondents: None  
Photographs are supplied by free lance and commercial photographers.

### Services:

NEA- United Features  
International News Service, United Press, NEA United Features  
Mat service, Stamps—Conhaim  
National advertising, Inland Newspaper representative.

### Dimensions:

Page dimensions in inches: 17½x22  
Number of col. per page: 8  
Width of col. (in picas): 12  
Depth of col. (in agate lines): 287  
Average number pages per issue: 6 to 8

### Plant Equipment:

Goss Comet  
Four platen job presses  
Three linotypes; one intertype  
Linecasting machine, Addressograph and Multilith

### Location and Mailing Information:

Marion is located 20 miles east of Carbondale on State Highway 13 and is served by the C. & E. I. railroad. The C. & E. I. and I. C. railroads provide the quickest mailing service between the two cities.

72  
Marion Evening Post  
12 Aug - 30 Sep 1948 (several pub'd)

## Marissa Messenger

Marissa Population 1800 Ph. 3  
Established 1880 St. Clair County Ind  
Publisher: Thomas J. Lee Editor: Thomas J. Lee  
Privately owned **Published Friday**  
Circulation (press run figures): 1287  
Area of distribution: Southeastern St. Clair county; portions of Washington, Randolph counties.

### Deadlines:

Copy deadline for news: Wednesday evening  
Advertisement deadline: Wednesday evening  
Newspaper is mailed: Friday morning

### Rates:

Classified advertising: 3c per word  
Display advertising per inch: 49c  
Subscription per year. \$2.50

### Staff:

Editorial: 3  
Back shop: 5  
Business staff: 2  
Total: 10

### Names of Staff Members:

Sports writer: Richard Lee  
Adv. Mgr.: Thomas Lee  
Back shop foreman: Bob Lee  
Business Mgr.: Thomas Lee

Regional correspondents. 4 (Rate of payment per col. inch 10c)  
Photographs are supplied by photographer-newsman combination and free lance photographers.

### Services:

No non-staff news services  
National advertising  
Mat service

### Dimensions:

Page dimensions in inches: 20½ x 7 col.  
Number of col. per page: 7  
Width of col. (in picas). 13  
Depth of col. (in agate lines): 294  
Average number pages per issue: 6-12

### Plant Equipment:

Hoe Rotary 12-page newspaper press  
Three platen job presses  
Chandler and Price automatic 12x18  
Two linotypes  
Ludlow, Elrod, addressograph, press-type camera, photo processing equipment, bookbinding equipment.

### Location and Mailing Information:

Marissa is located 60 miles northwest of Carbondale on State Highway 13, and is served by the I. C. railroad. The I. C. provides the quickest service between the two cities.

## MASCOUTAH

### Herald

Mascoutah Population 4200 Ph. 80  
Established 1885 St. Clair County Ind.  
Publisher: Arthur D. Jenkins Editor: Arthur D. Jenkins  
Corporation **Published Wednesday**  
Circulation (press run figures): 1450  
Area of distribution: 20-mile radius in east-central St. Clair county. Portions of Clinton county.  
The **Herald** is syndicated with **New Baden News; Clinton County News** (Trenton): and **Carlyle Union Banner**.

#### Deadlines:

Copy for news: Tuesday noon  
Advertisement deadline: Tuesday noon  
Newspaper is mailed: Wednesday morning

#### Rates:

Classified advertising: 10c per line  
Display advertising per inch: 56c  
Subscription per year: \$3.00

#### Staff:

Editorial: 2  
Back shop: 3  
Business: 1  
Total: 6

#### Names of Staff Members:

Adv. Mgr.: Arthur D. Jenkins  
Back shop foreman: W. F. Bultmann

Regional correspondents: 6 (rate of payment per col inch 5c)  
Photographs are supplied by photographer-newsmen combination.

#### Services:

No non-staff news services  
WNU; NEA features  
National advertising  
Mat service

#### Dimensions:

Page dimensions in inches: 15x22  
Width of col. (in picas). 13  
Depth of col. (in agate lines): 276  
Average number pages per issue: 8-10

#### Plant Equipment:

Cottrel, single revolution newspaper press  
Job presses: two platen, four cylinder  
Two intertypes  
Addressograph, press-type camera, photo processing equipment, book-binding equipment, folders, stitchers, punch, perforator.

#### Location and Mailing Information:

Mascoutah is located 75 miles northwest of Carbondale on State Highway 34, and is served by the L. & N. railroad. Rail connections with the L. & N. provide the quickest service between the two cities.

Jan. 4, 1940 - date

**McLEANSBORO**

**Times-Leader**

McLeansboro Population 3,000 Ph. 177  
Established 1855 as **Hamilton News** Hamilton County Ind.  
Publisher: Times-Leader Inc. Editor: Robert W. Evans  
Corporation **Published Thursday**  
Circulation (press run figures): 3350  
Area of distribution. Greater Hamilton county, portions of Wayne, Jefferson, Franklin, and White counties.

**Deadlines:**

Copy deadline for news: Thursday 10 a. m.  
Advertisement deadline: Tuesday noon  
Newspaper is mailed: Thursday afternoon-Friday morning

**Rates:**

Classified advertising: 3c per word  
Display advertising per inch: 63c national; 60c political and transient;  
45c local  
Subscription per year: \$2.50 in county; \$3 outside county

**Staff:**

Editorial: 2  
Back shop: 4  
Business: Same as editorial  
Part time society writer  
Total: 6  
Number of regional correspondents varies as does the rate of payment per col. inch  
Photographs are supplied by shop foreman, who is photographer; free lance photographers; and commercial photographers.

**Services:**

No non-staff news services  
National advertising  
Mat service

**Dimensions:**

Page dimensions: 8 col.x22 inches  
Number of col. per page. 8  
Width of col. (in picas): 12  
Depth of col. (in agate lines): 308  
Average number pages per issue: 8

**Plant Equipment:**

Miehle 00 newspaper press  
Three platen job presses (one platen is automatic)  
Two linotypes

**Location and Mailing Information:**

McLeansboro is located 60 miles northeast of Carbondale on State Highway 14, and is served by the L. & N. railroad. Rail connections with the L. & N. provide the quickest service between the two cities.

mk  
75  
Leader 6 Dec 1898 - 30 Oct 1890  
copy, very brittle & mutilated



Apr. 7, 1938 - date

**METROPOLIS**

**The Metropolis News**

(Consolidated with **Republican Herald** March 1949)

Metropolis	Population 6,288	Ph. 6
Established 1865	Massac County	Republican
Publisher: Charles C. Feirich		Editor: Charles C. Feirich
Privately owned		<b>Published Thursday</b>
Circulation (press run figures): 3,500		
Area of distribution: 15-mile radius		
Also publishes the <b>Brookport Independent</b>		

**Deadlines:**

Copy deadline for news: Tuesday  
 Advertisement deadline: Monday or Tuesday morning  
 Newspaper is mailed Wednesday afternoon and Thursday morning

**Rates:**

Classified advertising: 2c per word local; 3c foreign  
 Display advertising per inch: 45c local; 50c out of county; 70c foreign  
 Subscription: \$2.50 and \$3.50 per year

**Staff:**

Editorial: 2  
 Business: 2  
 Back shop: 6  
 Total: 10

**Names of Staff Members:**

Sports writer: Wilburn Smith  
 Adv. Mgr.: Russell Spore  
 Back shop foreman: Leon Speckman  
 Business Mgr.: Hattie M. Mann

Regional correspondents. 8 (Are not paid fixed rate)  
 Photographs are supplied by photographer-newsmen combination, free lance photographers, and commercial photographers.

**Dimensions:**

Overall page size (in inches): 17x22  
 Number of col. per page: 7  
 Width of col. (in picas): 12  
 Depth of col. (in agate lines): 280  
 Average number pages per issue: 16

**Services:**

No non-staff news services used  
 Mat service  
 National advertising

**Plant Equipment:**

Babcock Optimus 2-revolution newspaper press  
 Two linotypes  
 Possesses press-type camera and addressograph equipment  
 Four platen job presses  
 Two job presses with Kluge feeders

**Location and Mailing Information:**

Metropolis is located 60 miles southeast of Carbondale on U. S. Highway 45 and is served by the Illinois Central and C. B. & Q. railroads. A direct mail truck route to Metropolis each morning provides the quickest mailing service between the two cities.

Metropolis Gazette widely scattered names, 184-1139  
 12 Dec 1913 - 2 Dec 1922; 13 May 1927 - 3 Dec 1938  
 [ceased pub. ?]

Metropolis Republican Herald<sup>76</sup>  
 8 Oct 1914 - 2 Dec 1916; 7 Feb 1918 -  
 9 Mar, 1949 [ceased pub. ?]

Jan., 1956 - date

## MILLSTADT

### Millstadt Enterprise

Millstadt Population 1555 Ph. Millstadt 115  
Established 1898 St. Clair County Ind.  
Publisher: Kenneth J. Mollman Editor: Kenneth J. Mollman  
Privately owned **Published Thursday**  
Circulation (press run figures): 1300  
Area of distribution: West-central St. Clair county and portions of Monroe county.  
Syndicated with **Canteen News**, Washington Park, East St. Louis PO

#### Deadlines:

Copy deadline for news. Thursday noon  
Advertisement deadline: Wednesday noon  
Newspaper is mailed. Thursday 4 p. m.

#### Rates:

Classified advertising: 10c per line  
Display advertising per inch: 42c  
Subscription per year: \$2.50

#### Staff:

Editorial: 2  
Business and Back  
shop combined  
Total: 2

\*Printing plant in which newspaper  
is produced prints 10 to 12 other  
publications—weekly and monthly,  
employs 8. Owned by publisher.

Regional correspondents: None

Photographs are supplied by commercial photographers

#### Services:

NEA Services used  
Mat service  
National advertising

#### Dimensions:

Overall page size (in inches): 16x22  
Number of col. per page: 7  
Width of col. (in picas): 12  
Depth of col. (in agate lines): 280  
Average number pages per issue: 8

#### Plant Equipment:

Huber 54-inch newspaper press  
Pony Miehle, Dexter feeder  
Job presses: 2 platen; 1 cylinder  
Two linotypes  
B-J strip caster

#### Location and Mailing Information:

Millstadt is located about 100 miles northwest of Carbondale on State Highway 158 and is served by the C. & M. railroad. Mail service by bus from Belleville. Quickest mail service from Carbondale is via I. C. R. R. to Belleville

Jan. 8, 1925 - Dec., 1946  
Jan., 1948 - date

## MOUNDS

### Mounds Independent

Mounds Population 1989 Ph. 267  
Established 1924 Pulaski County Ind.  
Publisher: Wit Ledbetter Editor: Wit Ledbetter  
Privately owned Published Thursday  
Circulation (press run figures): 575  
Area of distribution; Mounds and immediate vicinity

#### Deadlines:

Copy deadline for news: Thursday 10 a. m.  
Advertisement deadline. Tuesday 5 p. m.  
Newspaper is mailed: Friday 6 a. m.

#### Rates:

Classified advertising: 10c per line  
Display advertising per inch: 30c local; 42c national

#### Staff:

Editorial staff: 1  
Back shop: 2 (Editor and Aryle Sowers)  
Business: 1  
Total: 2  
Regional correspondents: 2 (No standard rate of payment)  
Photographs are supplied by full-time staff photographer, photographer-newsman combination; free lance and commercial photographers.

#### Services:

No non-staff news services  
NEA Weekly Picture Service  
National advertising  
Mat service

#### Dimensions:

Page dimensions: 12x17½ Tabloid  
Number col. per page: 5  
Width of col. (in picas): 12  
Depth of col. (in agate lines): 245  
Average number pages per issue: 12

#### Plant Equipment:

Chandler & Price newspaper press  
Two platen job presses  
One linotype  
Press-type camera and photo processing equipment

#### Location and Mailing Information:

Mounds is located 55 miles south of Carbondale on U. S. Highway 51 and is served by the Illinois Central railroad. The I. C. provides the quickest service between the two cities.

Mounds News  
21 Feb 1919 - 2 Nov 1923  
Cease pub 1925??

Jan. 29, 1937 - Mar. 12, 1937 (Flood ed.)  
Feb. 20, 1948 - Feb. 13, 1953  
Feb., 1956 - date

**MOUND CITY**

## **Pulaski Enterprise**

Mound City

Population 2700

Ph. 16

Established 1872

Pulaski County

Ind.

Publisher: Frank Ledbetter

Editor: Frank Ledbetter

Privately owned

**Published Thursday**

Circulation (press run figures): 400

Area of distribution: Mound City and immediate vicinity

Syndicated with **Cartersville Herald**

### **Deadlines:**

Copy deadline for news: Wednesday noon

Advertisement deadline: Wednesday noon

Newspaper is mailed: Friday

### **Rates:**

Classified advertising: 2c per word

Display advertising per inch: 30c-35c

Subscription per year: \$2.00

### **Staff:**

Back shop: 1

Business: 1

Total: 2

No regional correspondents

No regular method used for obtaining photographs

### **Services:**

No non-staff news services

National advertising

Mat service

### **Dimensions:**

Number col. per page; 6

Width of col. (in picas). 13

Depth of col. (in agate lines): 280

Average number pages per issue: 4-6

### **Plant Equipment:**

Cranston newspaper press

Three platen job presses

One linotype

### **Location and Mailing Information:**

Mound City is located 50 miles south of Carbondale on U. S. Highway 51, and is served by the Big Four railroad lines. The Illinois Central railroad or bus route provides the quickest service between the two cities.

Feb. 27, 1948 - date

MT. CARMEL

## Wabash Weekly News

Mt. Carmel  
Established 1935

Population 8725  
Wabash County

Publisher: L. C. Hill  
Privately owned

Ph. 47  
Ind. Rep.  
Editor: L. C. Hill  
**Published Friday**

Circulation (press run figures): 1150

Area of distribution: Greater Wabash county and portions of Lawrence, Richland, Edwards counties: Knox and Gibson counties in Indiana.

### Deadlines:

Copy deadline for news: Wednesday noon  
Advertisement deadline: Wednesday noon  
Newspaper is mailed: Thursday

### Rates:

Classified advertising: 7½c per line  
Display advertising per inch: 30c local  
Subscription per year: \$1.50 local; \$2.00 national

### Staff:

Editorial: 2  
Business: 1  
Back shop: 1  
Total: 3

### Names of Staff Members:

Sports writer: L. C. Hill  
Advertising Mgr.: L. C. Hill  
Back shop foreman: L. C. Hill  
Business Mgr.: L. C. Hill

Regional correspondents: 4 (No regular rate of payment)  
Photographs are contributed by subscribers

### Services:

No non-staff news services  
Mat service  
National advertising

### Dimensions:

Page dimensions in inches: 20x6 col.  
Number of col. per page: 6  
Width of col. (in picas): 13  
Depth of col. (in agate lines): 280  
Average number pages per issue: 6

### Plant Equipment:

Lee flatbed newspaper press  
Two platen job presses  
One linotype

### Location and Mailing Information:

Mt. Carmel is located 105 miles northeast of Carbondale on State Highway 1 and is served by the N. Y. C. and Southern railroads. Rail connections with New York Central provides the quickest mailing service between the two cities.

Mt Carmel  
Evening Register  
1 Jan - 25 Nov 1918  
[ceased pub.]

Sept. 20, 1940 - June, 1952  
July, 1955 - date

MT. CARMEL

## Daily Republican-Register

Mt. Carmel Population 8,725 Ph. 24  
Established 1839 Wabash County Ind.  
Publisher: A. M. Richmond Editor: Earl Allison  
Corporation **Published evenings except Sunday**  
Circulation (press run figures): 4,586  
Area of distribution: Greater Edwards and Wabash counties. Portions of  
Richland, Lawrence, Wayne, and White counties.

### Deadlines:

Copy deadline for news. Noon daily  
Advertisement deadline: 10 a. m.; large ad day before  
Newspaper is mailed: 4 p. m. daily

### Rates:

Classified advertising. 4c 1 time; 8c 3 times.  
Display advertising per inch: 55c  
Subscription per year: \$5.00

### Staff:

Editorial: 2  
Back shop: 8  
Business: 6  
Total: 16

### Names of Staff Members:

Sports writer: F. W. Allison  
Adv. Mgr.: J. J. McDonnell  
Back shop foreman: Leo Henteseher  
Business Mgr.: J. J. McDonnell

Regional correspondents: 14 (rate of payment per col. inch 10c)  
Photographs are supplied by photographer-newsmen combination; commercial photographers.

### Services:

United Press  
National advertising  
Mat service

### Dimensions:

Page dimensions: 8 col x 20½ inches  
Number of col. per page: 8  
Width of col. (in picas): 12  
Depth of col (in agate lines): 287  
Average number pages per issue: 6-8

### Plant Equipment:

Duplex newspaper press  
Three platen job presses  
Three linotypes  
Addressograph

### Location and Mailing Information:

Mt Carmel is located 105 miles northeast of Carbondale on State Highway 1, and is served by N. Y. C. and Southern railroads. Rail connections with the N. Y. C. provides the quickest service between the two cities.

Jan., 1956 - date

MT. VERNON

# Mt. Vernon Register-News

Mt. Vernon Population 18,000 Ph. 117-118-119  
 Established: Jeffersonian 1851 Jefferson County Independent  
 News 1871: Register 1882 Consolidated 1920  
 Publisher: J. Edwin Rackaway Editor: J. Edwin Rackaway  
 Corporation **Published Daily**  
 Circulation (press run figures): 11,000  
 Area of distribution. Greater Jefferson county and parts of Wayne, Hamilton, Franklin, Washington, Perry and Marion counties.

## Deadlines:

Copy deadline for news: 1 p. m. daily  
 Advertisement deadline: Previous day  
 Newspaper is mailed: 4 to 6 p. m. daily

## Rates:

Classified advertising: 75c, 2 lines (15 words)  
 Display advertising per inch: 84c  
 Subscription per year: \$5.00 local: \$8.00 outside

## Staff:

Editorial: 5  
 Business: 9  
 Back shop: 15  
 Other: 2  
 Total: 31

## Names of Staff Members:

Sports writer: John Rackaway  
 Adv. Mgr.: Wm. C. Rackaway  
 Back shop foreman: G. L. Shehorn  
 Business Mgr.: C. J. Thompson  
 News editor: Orain Metcalf

Regional correspondents: 22 (No standard rate of payment)  
 Photographs are supplied by free lance photographers and commercial photographers.

## Dimensions:

Overall page size (in inches): 17 1-8x22 5-8  
 Number of col. per page: 8  
 Width of col. (in picas): 12  
 Depth of col. (in agate lines): 294  
 Average number pages per issue: 12

## Services:

Associated Press  
 NEA Features  
 Mat service  
 National advertising

## Plant Equipment:

Duplex Rotary press  
 Job presses: 4 platen, 1 cylinder  
 Six linotypes; one monotype  
 Ludlow; Fairchild engraver; addressograph

## Location and Mailing Information:

Mt. Vernon is located 60 miles northeast of Carbondale on State Highway 37 and is served by the L. & N., Southern, C. & EI., and Missouri Pacific railroads. The quickest mailing route between the two cities is provided by the I. C. to Ashley; L. & N. to Mt. Vernon.

*Murphy's Daily Republican*  
 1 April 1918 - July 1920  
 3 Jan 1921 - 30 July 1925

MTV Free Press 30 Apr 1868 - 30 Dec 1869  
 15 June 1876 - 6 Sep 1877

this was the name

Nov. 23, 1939 - date

(See Southern Illinoisan Page 17)—MURPHYSBORO  
NASHVILLE

## Nashville Journal

Nashville Population 2500 Ph. 239  
Established 1862 Washington County Ind.  
Publisher: Joseph B. Campbell Editor: Joseph B. Campbell  
Privately owned Published Thursday  
Circulation (press run figures). 2120  
Area of distribution: Greater Washington county; portions of Clinton, St. Clair, Marion, Jefferson, Perry and Randolph counties.

### Deadlines:

Copy deadline for news: Wednesday 5 p. m.  
Advertisement deadline: Tuesday noon  
Newspaper is mailed: Thursday afternoon

### Rates:

Classified advertising: 2c per word  
Display advertising per inch: 35c local; 49c national  
Subscription per year. \$2 county; \$2:50 outside county

### Staff:

Editorial: 2  
Back shop: 3  
Business: 1  
Total: 6

### Names of Staff Members:

Adv. Mgr.: J. B. Campbell  
Back shop foreman: Elmer Schnare  
Business Mgr.: Miss Carolyn Troutt

Regional correspondents: 22 (rate of payment. by month \$2.50 plus commission)

Photographs are supplied by photographer-newsmen combination; free lance; commercial photographers.

### Services:

No non-staff news services  
National advertising  
Mat service

### Dimensions:

Page dimensions: 17½ x 22 inches  
Number of col. per page; 7  
Width of col. (in picas): 13  
Depth of col. (in agate lines): 308  
Average number pages per issue: 10

### Plant Equipment:

Babcock flat bed newspaper press  
Three platen job presses  
Two linotypes  
Addressograph; press-type camera, bookbinding equipment.

### Location and Mailing Information:

Nashville is located 60 miles northwest of Carbondale on State Highway 127 and is served by the L. & N. and M. & I. railroads. Rail connections with the L. & N. provide the quickest service between the two cities.

83

*Murphysboro Daily Independent*  
*scattered issues 1917-1925*  
*3 April 1926 - Jan 1942 (mostly of only 2)*



Jan., 1956 - date

NASHVILLE

# The Nashville News

Nashville	Population 2500	Ph. 30
Established 1934	Washington County	Ind. Republican
Publisher: Ed Schmitt		Editor: Ed Schmitt
Privately owned		<b>Published Thursday</b>
Circulation (press run figures): 3200 (Sworn postal circulation statement 3,022 (Oct. 3, 1950))		
Area of distribution: Greater part of Washington county		

## Deadlines:

Copy deadline for news: Thursday 9 a. m.  
 Advertisement deadline: Tuesday noon  
 Newspaper is mailed: Thursday noon

## Rates:

Classified advertising: 1c per word  
 Display advertising per inch: National 28c; local 20c  
 Subscription per year: \$1.25 in county; \$1.50 outside

## Staff:

Editorial: 2  
 Business: combined  
 Back shop: 3  
 Total: 5  
 Regional correspondents: 16 (Paid monthly rate based on circulation in their community—average about 75c column)  
 Photographs are supplied by free lance photographers and commercial photographers.

## Services:

Stamps-Conhaim mat service  
 National advertising

## Dimensions:

Page dimensions in inches: 118  
 Number of col. per page: 6  
 Width of col. (in picas): 13  
 Depth of col. (in agate lines): 276  
 Average number pages per issue: 10

## Plant Equipment:

Cranston drum newspaper press  
 Two platen job presses  
 Two linotypes

## Location and Mailing Information:

Nashville is located about 60 miles north of Carbondale on State Highway 127 and is served by the L. & N. and Missouri-Ill. railroads. The L. & N. and I. C. via Ashley provides the quickest mailing service between the two cities.

*Nashville Democrat*  
 13 Dec 1917 - 26 June 1924  
 Ceased pub 1926 95

*Jan., 1929 - date*

**NEW ATHENS**

**Journal-Press**

New Athens	Population 1800	Ph. 32
Established 1894	St. Clair County	Independent
Publisher: H. A. & R. A. Fischer		Editor: Harold A. Fischer
Partnership newspaper		<b>Published Thursday</b>
Circulation (postal receipts): 2557		
Area of distribution: South half St. Clair county, portions of Washington, Monroe, and Randolph counties.		
Is syndicated with <b>Herald Tribune</b> , Dupo, Ill.		

**Deadlines:**

Copy deadline for news: Wednesday noon  
Advertisement deadline: Wednesday noon  
Newspaper is mailed: Wednesday, 10 p. m.

**Rates:**

Classified advertising: 2c per word, min. 50c  
Display advertising per inch: 56c  
\*Subscription per year: \$2.00

**Staff:**

Editorial: 1  
Business: 2  
Back shop: 4  
Total: 7

**Names of Staff Members:**

Sports writer: None  
Adv. Mgr.: R. A. Fischer  
Back shop foreman: Fred Lischer  
Business Mgr: R. A. Fischer

Regional correspondents: 3 (Paid at a weekly rate of \$3 each)  
Photographs are supplied by reader contributions

**Dimensions:**

Type page size: 14½ x 20  
Number of col. per page: 7  
Width of col. (in picas): 12  
Depth of col. (in agate lines): 280  
Average number of pages per issue: 8

**Services:**

No non-staff news services  
Mat service  
National advertising

**Plant Equipment:**

Cottrell two-revolution newspaper press  
Babcock newspaper press  
Three platen job presses  
Little Giant automatic cylinder job press  
Two linotypes.  
Universal Mono-Tabular ruling machine

**Location and Mailing Information:**

New Athens is located 70 miles northwest of Carbondale on State Highway 13, and is served by the Illinois Central railroad. The Illinois Central provides the quickest mailing service between the two cities.

\*The **Journal-Press** is distributed free by mail to every home in the territory from Belleville to Sparta, except Freeburg and Marissa proper. Subscription rates are \$2 per year outside that area.

NEW BADEN

## New Baden News

New Baden  
Established 1938  
Publisher: Arthur D. Jenkins  
Corporation  
Circulation (press run figures). 875  
Area of distribution: Southwest portion of Clinton county  
Syndicated with **Mascoutah Herald; Clinton County News-Trenton; Carlyle Union Banner.**

Population 1500  
Clinton County

Ph. 140  
Ind.  
Editor: Arthur D. Jenkins  
**Published Thursday**

### Deadlines:

Copy deadline for news: Wednesday noon  
Advertisement deadline: Wednesday noon  
Newspaper is mailed: Friday

### Rates:

Classified advertising: 10c per line  
Display advertising per inch: 42c  
Subscription per year: \$2.50

### Staff:

See **Mascoutah Herald**

### Services:

WNU feature services  
Mat service  
National advertising

### Dimensions:

Overall page size (in inches): 15x22  
Number of col. per page: 6  
Width of col. (in picas): 13  
Depth of col. (in agate lines): 308  
Average number pages per issue: 8

### Plant Equipment:

Paper is printed at the **Mascoutah Herald**

### Location and Mailing Information:

New Baden is located 90 miles northwest of Carbondale on State Highway 161 and is served by the Southern railroad. Rail connections with the Southern railroad provide the quickest mailing service between the two cities.

**NOBLE**

## **The Noble News**

Noble Population 800 Ph. 91-W Olney  
Established 1879 Richland County Ind.  
Publisher: Lewis C. Spelman Editor: Lewis C. Spelman  
Privately owned **Published Thursday**  
Circulation (press run figures): 679  
Area of distribution: Noble and immediate vicinity  
The **Noble News** is owned by **The Olney Times** of Olney, Illinois, and is printed in the Olney plant and mailed through the post office in Noble.

### **Deadlines:**

Copy deadline for news: Wednesday  
Advertisement deadline: Wednesday  
Newspaper is mailed: Thursday afternoon

### **Rates:**

Classified advertising: 2c per word  
Display advertising per inch: 42c  
Subscription per year: \$1:50 and \$2.00

### **Staff:**

Editorial: 1  
Adv. Mgr.: L. C. Spelman  
Total: 1  
Regional correspondents. 12 (no standard rate of payment)  
Free lance photographers supply photographs

### **Services:**

No non-staff news services  
National advertising  
Mat service

### **Dimensions:**

Page dimensions (overall): 140 inches  
Number col. per page: 7  
Width of col. (in picas): 12  
Depth of col. (in agate lines): 280  
Average number pages per issue: 4

### **Plant Equipment:**

At Olney  
Miehle newspaper press  
Two platen; one cylinder job press  
One linotype

### **Location and Mailing Information:**

Noble is located 117 miles northeast of Carbondale on U. S. Highway 50, and is served by the Baltimore & Ohio railroad. Rail connections from the I. C. with the B. & O. provide the quickest service between the two cities.

May, 1956 - date

NORRIS CITY

## The Norris City News

Norris City  
Established 1941

Population 2002  
White County

Publisher: P. J. Valter  
Joint ownership

Ph. 129  
Ind. Democratic  
Editor: Rue G. Starr  
**Published Thursday**

Circulation (press run figures): 925

Area of distribution: Portions of White, Hamilton and Gallatin counties

Syndicated with **The Gallatin Democrat, Shawneetown; The Ridgeway News; Carrier Mills News; Eldorado Examiner**

### Deadlines:

Copy deadline for news: Tuesday 5 p. m.

Advertisement deadline: Tuesday 5 p. m.

Newspaper is mailed: Wednesday noon

### Rates:

Classified advertising: 2c per word

Display advertising per inch: 40c local; 49c national

Subscription per year: \$1.50 local; \$2.00 national

### Staff:

Editorial: 2

Business: None

Back shop: None

Total: 2

Regional correspondents: 6 (rate of payment per col. inch 5c)

Photographs are supplied by photographer-newsmen combination and commercial photographers.

### Names of Staff Members:

Sports writer: Rue G. Starr

Adv. Mgr.: Rue G. Starr

### Services:

No non-staff news services

Mat service

National advertising

### Dimensions:

Page dimensions in inches: 17½ x 22

Number of col. per page: 8

Width of col. (in picas): 12

Depth of col. (in agate lines): 294

Average number of pages per issue: 8

### Plant Equipment:

Paper is printed in **Gallatin Democrat** plant, Shawneetown

### Location and Mailing Information:

Norris City is located 65 miles northeast of Carbondale on U. S. Highway 45 and is served by the New York Central and B. & O. railroads. Regular U. S. Mail provides quickest service between the two cities.

O'FALLON

## O'Fallon Progress

O'Fallon  
Established 1894

Population 3,032  
St. Clair County

Ph. 43  
Ind.

Publisher: Irwin A. Yare  
Privately owned

Editor: Irwin A. Yare  
**Published Thursday**

Circulation (press run figures): 1300  
Area of distribution. Northwestern St. Clair county

### Deadlines:

Copy deadline for news: Wednesday noon  
Advertisement deadline: Tuesday p. m.  
Newspaper is mailed: Wednesday p. m.

### Rates:

Classified advertising: 10c per line (30c minimum)  
Display advertising per inch: 42c  
Subscription per year: \$2.50 in advance

### Staff:

Editorial: 2  
Back shop: 3  
Total: 5  
Regional correspondents: 2 (Rate of payment per col. in. \$1.30)  
Photographs are supplied by free lance photographers and by editor's use of Land camera.

### Services:

No non-staff news services  
Mat service  
National advertising

### Dimensions:

Overall page size (in inches): 20x7 col.  
Number of col. per page: 7  
Width of col. (in picas): 13  
Depth of col. (in agate lines): 280  
Average number pages per issue: 8

### Plant Equipment:

Miehle press  
Three platen job presses  
One linotype  
Bookbinding equipment

### Location and Mailing Information:

O'Fallon is located about 115 miles northwest of Carbondale on U. S. Highway 50 and is served by the B. & O. railroad. Rail connections with the B. & O. via I. C. provides the quickest mail service between the two cities.

Jan., 1956 - date

OKAWVILLE

## Okawville Times

Okawville Population 750 Ph. 563  
Established 1893 Washington County Ind.  
Publisher: Warren D. Stricker Editor: Warren D. Stricker  
Privately owned Published Thursday  
Circulation (press run figures): 1175  
Area of distribution: Northwestern Washington county

### Deadlines:

Copy deadline for news: Tuesday noon  
Advertisement deadline: Tuesday noon  
Newspaper is mailed: Thursday morning

### Rates:

Classified advertising: 10c per line  
Display advertising per inch: 42c  
Subscription per year: \$2.00

### Staff:

One Editor  
One linotype operator  
One secretary  
Total: 4  
No regional correspondents  
Photographs are supplied by photographer-newsman combination.

### Services:

No non-staff news services  
WNU feature service  
Mat service  
National advertising

### Dimensions:

Page dimensions: 24x35  
Number of col. per page: 7  
Width of col. (in picas): 13  
Depth of col. (in agate lines): 308  
Average number pages per issue: 8

### Plant Equipment:

One cylinder newspaper press  
Job presses: 3 vertical  
Two linotypes  
Addressograph; photo processing equipment

### Location and Mailing Information:

Okawville is located 75 miles northwest of Carbondale on State Highway 15 and is served by the L. & N. railroad. Rail connections with the L. & N. lines provide the quickest service between the two cities

OLNEY

## The Olney Advocate

Olney  
Established 1883  
Publisher: Ed J. Stoll  
Privately owned  
Circulation (press run figures): 1960  
Area of distribution: Greater Richland county

Population 10,683  
Richland County

Ph. 404  
Republican  
Editor: Ed J. Stoll  
Published Thursday

### Deadlines:

Copy deadline for news: Wednesday a. m.  
Advertisement deadline: Tuesday p. m.  
Newspaper is mailed: Wednesday evening

### Rates:

Classified advertising: 15c per line  
Display advertising per inch: 60c  
Subscription per year: \$2.00

### Staff:

Editorial: 2  
Back shop: 3  
Total: 4  
Regional correspondents: 16 (no standard rate of payment)  
Photographs are supplied by commercial photographers.

### Services:

WNU services  
Mat service  
National advertising

### Dimensions:

Page dimensions in inches: 120  
Number of col. per page: 6  
Width of col. (in picas): 13  
Depth of col. (in agate lines): 280  
Average number pages per issue: 8

### Plant Equipment:

Cottrell newspaper press  
Job presses: 2 platen; Craftsman automatic  
One linotype

### Location and Mailing Information:

Olney is located 125 miles northeast of Carbondale on U. S. Highway 50 and is served by the BIO and IC railroads. The quickest mail service between the two cities is provided via BIO to Odin, IC to Carbondale.



Jan., 1956 - date

**OLNEY**

## **Olney Daily Mail**

Olney  
Established 1898  
Publisher: Allen Yount  
Corporation  
Circulation (press run figures): 5,750  
Area of distribution: Greater Richland county; portions of Clay, Lawrence, Edwards, and Wabash counties.

Population 10,683  
Richland County  
**Published Daily except Sundays and Holidays**

Ph. 81  
Independent  
Editor: Allen Yount

### **Deadlines:**

Copy deadline for news: Presses are stopped for important news.

Advertisement deadline: Preceding p. m. except for Thursdays.

Thursday deadline is preceding Tuesday

Newspaper is mailed: Daily 2 to 4 p. m.

### **Rates:**

Classified advertising: 3c-2c — 50c minimum.

Display advertising per inch: 65c open; 63c national; frequency rates lower

Subscription per year: \$6.50-\$4.50 by mail—20c per week by carrier

### **Staff:**

Editorial: 2

Business: 4 (includes adv. dept.)

Back shop: 12

Total: 18

Regional correspondents: 15. (Two correspondents are paid; others are given free subscription)

Photographs are supplied by free lance and commercial photographers.

### **Names of Staff Members:**

Sports writer: Jim Turpin

Adv. Mgr.: John J. Hursta

Back shop foreman: Levi Tennyson

Business Mgr.: Allen Yount

### **Services:**

International News Service

NEA Features and smaller feature services

Mat service

National advertising

### **Dimensions:**

Number of col. per page: 8

Width of col. (in picas): 12

Depth of col. (in agate lines): 280

Average number of pages per issue: 6

### **Plant Equipment:**

Goss Comet flat-bed newspaper press

No job presses

Two Intertypes (another on order)

### **Location and Mailing Information:**

Olney is located 125 miles northeast of Carbondale on U. S. Highway 50 and is served by the BIO and IC railroads. The quickest mail service between the cities is via BIO to Odin, IC to Carbondale.

OLNEY

## The Olney Times

Olney Population 10,683 Ph. 91-W  
Established 1874 Richland County Democratic  
Publisher: Lewis C. Spelman Editor: Lewis C. Spelman  
Privately owned **Published Thursday**  
Circulation (press run figures): 1979  
Area of distribution: Olney and immediate vicinity  
The **Olney Times** owns and prints **The Noble News**.

### Deadlines:

Copy deadline for news: Wednesday  
Advertisement deadline: Wednesday  
Newspaper is mailed: Thursday afternoon

### Rates:

Classified advertising: 2c per word local; 3c foreign  
Display advertising per inch: 49c  
Subscription per year: \$1.50 and \$2.00

### Staff:

Editorial: 2  
Back shop: 3  
Business: 1  
Total: 6  
Regional correspondents: 12 (no standard rate of payment)  
Photographs are supplied by free lance photographers

### Names of Staff Members:

Sports writer: Galen Hughes  
Adv. Mgr.: L. C. Spelman  
Back shop foreman: Lester Linder  
Business Mgr.: L. C. Spelman

### Services:

No non-staff news services  
National advertising  
Mat service

### Dimensions:

Page dimensions in inches (overall): 140  
Number of col. per page: 7  
Width of col. (in picas): 12  
Depth of col. (in agate lines): 280  
Average number pages per issue: 8

### Plant Equipment:

Miehle newspaper press  
Two platen; one cylinder job press  
One linotype  
Bookbinding equipment

### Location and Mailing Information:

Olney is located 125 miles northeast of Carbondale on U. S. Highway 50, and is served by the Illinois Central and B&O railroads. The I. C. provides the quickest service between the two cities

PINCKNEYVILLE

## The Perry County Advocate

Pinckneyville

Population 3500

Ph. 23

Established 1896

Perry County

Republican

Publisher: Joseph A. Brey

Editor: Joseph A. Brey

Privately owned

Published Thursday

Circulation (press run figures): 2000

Area of distribution: Greater Perry and Washington counties. portions of Jefferson, Franklin, Jackson and Randolph counties

### Deadlines:

Copy deadline for news. Wednesday p. m.

Advertisement deadline: Wednesday p. m.

Newspaper is mailed: Thursday 2 p. m.

### Rates:

Classified advertising: 2c per word

Display advertising per inch: 35c local 40c national

Subscription per year: \$2.50

### Staff:

Editorial: 2

Business: 2

Back shop: 2

Total: 6

Regional correspondents: 10 (no standard rate of payment)

Photographs are supplied by free lance photographers and commercial photographers.

### Names of Staff Members:

Sports writer: Donald Dry

Adv. Mgr.: W. Kenneth Brey

Back shop foreman: G. J. Jany

Business Mgr.: Joseph A. Brey

### Services:

No non-staff news services used

Mat service

National advertising

Mayer Both

### Dimensions:

Overall page size (in inches) 20 inches x 6 col.

Number of col. per page; 6

Width of col. (in picas): 13

Depth of col. (in agate lines): 280

Average number pages per issue: 8

### Plant Equipment:

Cylinder (Potter) newspaper press

Platen and cylinder job presses

One linotype

Addressograph and bookbinding equipment.

### Location and Mailing Information:

Pinckneyville is located 32 miles northwest of Carbondale on State Highway 13 and is served by the Illinois Central railroad. Bus routes and the I. C. provide the quickest service between the two cities.

Dec. 20, 1917 - June 27, 1918  
Sept. 12, 1918 - Dec. 25, 1919  
Jan 1, 1949 - date

## PINCKNEYVILLE

### The Democrat

Pinckneyville Population 3500 Ph. 26  
Established 1870 Perry County Democratic  
Published: L. B. Sheley Editor: Matt Sheley  
Joint ownership **Published Thursday**  
Circulation (press run figures): 3100  
Area of distribution: Greater Perry and Washington counties, portions of  
Randolph, Jackson, Franklin, and Jefferson counties.

#### Deadlines:

Copy deadline for news: Tuesday 10 a. m. (out of area)  
Advertisement deadline: Tuesday 5 p. m.  
Newspaper is mailed: Thursday 1:00 p. m.

#### Rates:

Classified advertising: 3c per word for one insertion  
Display advertising per inch: National 63c; open 45c contract 35c  
Subscription per year: \$2.50 and \$3.00

#### Staff:

Editorial: 4  
Back shop: 4  
Total: 8

#### Names of Staff Members:

Sports writer: Bill Hartwell  
Adv. Mgr.: John A. Sheley  
Back shop foreman: F. D. Sheley  
Managing Editor: Matt Sheley

Regional correspondents: 10 (monthly rate of payment)  
Photographs are supplied by photographer-newsmen combination; free  
lance and commercial photographers.

#### Services:

No non-staff news services  
National advertising  
Mat service

#### Dimensions:

Page dimensions (overall) 120 inches  
Number of col. per page; 6  
Width of col (in picas): 13  
Depth of col. (in agate lines): 276  
Average number pages per issue; 12

#### Plant Equipment:

Babcock cylinder newspaper press  
Two platen job presses  
Two linotypes  
Addressograph

#### Location and Mailing Information:

Pinckneyville is located 32 miles northwest of Carbondale on State Highway 13 and is served by the I. C. and MP railroads. Quickest mail service between the two cities is by Illinois Central or by bus line.

## POCAHONTAS

# The News Patriot

Pocahontas Population 800 Ph. 2222  
Established 1898 Bond County Ind.  
Publisher: Sylvester Clayton Editor: Sylvester Clayton  
Privately owned **Published Friday**  
Circulation (press run figures): 425  
Area of distribution. About 50 sq. miles south and west Bond county

### Deadlines:

Copy deadline for news: Wednesday p. m.  
Advertisement deadline: Wednesday p. m.  
Newspaper is mailed: Friday evening

### Rates:

Classified advertising rates: 1c per word: 25c minimum  
Display advertising per inch. 25c local; national and political 30c  
No regional correspondents  
Photographs are supplied by no regular method.

### Services:

WNU Service  
No non-staff news services used  
Mat service  
National advertising

### Dimensions:

Page dimensions in inches: 6 col. x 20 inches  
Number of col. per page: 6  
Width of col. (in picas). 13  
Depth of col. (in agate lines): 280

### Plant Equipment:

Cottrell book and job cylinder  
Three platen job presses  
One linotype

### Location and Mailing Information:

Pocahontas is located 121 miles northwest of Carbondale on U. S. Highway 40. Regular U. S. mail provides the quickest service between the two cities.

## PRAIRIE DU ROCHER

### The Sun

Prairie du Rocher

Established 1901

Publisher: Brands & File

Joint ownership

Circulation (press run figures): 600

Area of distribution: Thirty-mile radius. Covers large portion of Monroe and Randolph counties.

Printed at **Chester Herald-Tribune**

Population 600  
Randolph County

Ph. 78

Democratic

Editor: A. A. Brands

**Published Friday**

#### **Deadlines:**

Copy deadline for news: Wednesday noon

Advertisement deadline: Tuesday 4 p. m.

Newspaper is mailed: Friday

#### **Rates:**

Classified advertising: 10c per line

Display advertising per inch: 30c local; 42c national

Subscription per year: \$1.75

#### **Staff:**

See **Chester Herald-Tribune**

(Editorial and business office only).

Regional correspondents: 4 (No standard rate of payment)

Photographs are supplied by no standard method.

#### **Services:**

No non-staff news service

Mat service

National advertising

#### **Dimensions:**

Page dimensions in inches: 20 x 8 col.

Number of col. per page: 8

Width of col. (in picas): 12

Depth of col. (in agate lines): 294

Average number pages per issue: 6

#### **Plant Equipment:**

See **Chester Herald-Tribune**

#### **Location and Mailing Information:**

Prairie du Rocher is located 62 miles northwest of Carbondale on State Highway 155 and is served by Mo. P. and Cotton Belt railroads. Rail connections with Missouri Pacific provides the quickest mailing service between the two cities. All communications are to be addressed to Business Office at Prairie du Rocher, Ill.

RAMSEY

## Ramsey News-Journal

Ramsey Population 840 Ph. 30  
Established 1882 Fayette County Independent  
Publishers: J. H. & R. J. Mueller Editor: J. H. Mueller  
Privately owned Published Thursday  
Circulation (press run figures): 1100  
Area of distribution: North-central Fayette, south Shelby and Christian, and East Montgomery counties.

### Deadlines:

Copy deadline for news: Wednesday noon  
Advertisement deadline: Wednesday a. m.  
Newspaper is mailed: Wednesday p. m.

### Rates:

Classified advertising: 2c per word  
Display advertising per inch: 42c  
Subscription per year: \$2.00 local

### Staff:

Editorial: 2  
Business: 2  
Back shop: 2  
Total: 6

### Names of Staff Members:

Sports writer: R. J. Mueller  
Adv. Mgr.: R. J. Mueller  
Back shop foreman: J. H. Mueller  
Business Mgr.: J. H. Mueller

Regional correspondents: 12 (No standard rate of payment)  
Photographs are supplied by free lance photographers and commercial photographers.

### Services:

No non-staff news service  
Mat service  
National advertising

### Dimensions:

Page dimensions (in inches): 140 (overall)  
Number of col. per page: 7  
Width of col. (in picas): 12  
Depth of col. (in agate lines): 280  
Average Number pages per issue: 8

### Plant Equipment:

Lee 2-revolution No. 675 newspaper press  
Job presses: 2 platen; 1 cylinder  
One linotype

### Location and Mailing Information:

Ramsey is located 100 miles north of Carbondale on U. S. Highway 51 and is served by Illinois Central, Nickel Plate. The I. C. provides the quickest mailing service between the two cities.

Oct 8, 1914 - Dec., 1943  
June 8, 1956 - date

**RED BUD**

## **Red Bud Pilgrim**

Red Bud Population 1500 Ph. 36  
Established 1898 Randolph County Independent  
Publisher: File & Koeneman Editor: John L. File  
Joint ownership **Published Friday**  
Circulation (press run figures): 1250  
Area of distribution: Parts of Randolph, Monroe and St. Clair counties.

### **Deadlines:**

Copy deadline for news: Thursday morning  
Advertisement deadline: Wednesday 3 p. m.  
Newspaper is mailed: Friday afternoon

### **Rates:**

Classified advertising: 3c per word  
Display advertising per inch: 50c  
Subscription per year: \$2.00

### **Staff:**

Editorial: 2 (combined)  
Business: 2  
Back shop: 2  
Total: 4

### **Names of Staff Members:**

Adv. Mgr.: Irene Beshler  
Back shop foreman: E. E. Prost  
Business Mgr.: L. A. File

Regional correspondents: 4 (Rate of payment per col. inch 5c)  
Photographs are supplied by free lance photographers and commercial photographers.

### **Services:**

No non-staff news service  
Mat service  
National advertising

### **Dimensions:**

Overall page size (in inches): 20 x 8 col.  
Number of col. per page: 8  
Width of col. (in picas): 12  
Depth of col. (in agate lines): 308  
Average number of pages per issue: 6

### **Plant Equipment:**

Printed in **Herald-Tribune** shop, Chester, Ill.

### **Location and Mailing Information:**

Red Bud is located 65 miles northwest of Carbondale on State Highway 3 and is served by the G. M. & O. railroad. The G. M. & O. via I. C. provides the quickest mailing service between the two cities.



RIDGWAY

## The Ridgway News

Ridgway  
Established 1889  
Publisher: P. J. Valter  
Joint ownership

Population 1300  
Gallatin County

Ph. 84  
Ind.-Democrat  
Editor: T. P. Scherrer  
**Published Thursday**

Circulation (press run figures): 750

Area of distribution: Greater Gallatin county, extreme south portion of White county.

Syndicated with **The Gallatin Democrat**, Shawneetown; **The Norris City News**; **Carrier Mills News**; **Eldorado Examiner**.

### Deadlines:

Copy deadline for news: Tuesday 4 p. m.  
Advertisement deadline: Tuesday 4 p. m.  
Newspaper is mailed: Wednesday 5 p. m.

### Rates:

Classified advertising: 3c per word  
Display advertising per inch: 50c  
Subscription per year: \$2 local; \$3 foreign

### Staff:

Editorial: 2  
Business: 2  
Back shop: 0  
Total: 3

### Names of Staff Members:

Sports writer: T. P. Scherrer  
Adv. Mgr.: T. J. Scherrer  
\*Back shop foreman: None  
Business Mgr.: P. J. Valter

Regional correspondents: 2 (Paid 5c per col. inch)  
Photographs are supplied by photographer-newsman combination

### Services:

No non-staff news service  
Mat service  
National advertising

### Dimensions:

Overall page size (in inches): 17½x22  
Number of col. per page: 8  
Width of col. (in picas): 12  
Depth of col. (in agate lines): 294  
Average number pages per issue: 10

### Plant Equipment:

\*The **Ridgway News** is printed in plant of **Gallatin Democrat**, Shawneetown.

### Location and Mailing Information:

Ridgway is located 63 miles east of Carbondale, 1 mile off State Highway 1 and is served by the B. & O. railroad. Material intended for publication should be mailed direct to Shawneetown which is located approximately 64 miles due east of Carbondale on Highway 13.

*Jan., 1956 - date*

**ST. ELMO**

## **St. Elmo Banner**

St. Elmo	Population 2500	Ph. 58
Established 1924	Fayette County	Independent
Publisher: John Bluck	Editor: John Bluck and Everett H. Smith	
Joint ownership	<b>Published Thursday</b>	
Circulation (press run figures): 903		
Area of distribution: Greater part of eastern Fayette county and extreme western portion of Effingham county.		

### **Deadlines:**

Copy deadline for news: Thursday noon  
 Advertisement deadline: Wednesday noon  
 Newspaper is mailed: Thursday afternoon

### **Rates:**

Classified advertising: 2c per word  
 Display advertising per inch: 42c national  
 Subscription per year: \$2.00 local; \$3.00 outside county

### **Staff:**

Editorial: Combined  
 Business: 1  
 Back shop: 3  
 Total: 4

### **Names of Staff Members:**

Sports writer: John Bluck  
 Adv. Mgr.: John Bluck  
 Back shop foreman: Everett Smith  
 Business Mgr.: John Bluck

Regional correspondents: 11 (rate of payment per col. in. 3c-4c)  
 Photographs are supplied by photographer-newsman combination; free lance photographers and commercial photographers.

### **Services:**

No non-staff news service  
 Mat service  
 National advertising

### **Dimensions:**

Page dimension in inches: 14x22  
 Number of col. per page: 7  
 Width of col. (in picas): 12  
 Depth of col. (in agate lines): 280  
 Average number pages per issue: 10

### **Plant Equipment:**

38x50 Huber automatic newspaper press  
 Two platen job presses  
 Two Intertypes

### **Location and Mailing Information:**

St. Elmo is located about 106 miles northeast of Carbondale on U. S. Highway 40 and is served by the Pennsylvania and C. & E. I. railroad. Connections made by the Illinois Central to Effingham; Penn. to St. Elmo or Illinois Central to Marion, CEI to St. Elmo provide the quickest mailing service between the two cities.

SALEM

## Marion County Democrat

Salem Population 8000 Ph. 23  
Established 1889 Marion County Democratic  
Publisher: Charles, Lora & Anna Roberts Editor: Charles H. Roberts  
Privately owned Published Thursday  
Circulation (press run figures): 3000  
Area of distribution: Central portion of Marion county.

### Deadlines:

Copy deadline for news: Wednesday noon  
Advertisement deadline: Wednesday noon  
Newspaper is mailed: Thursday noon

### Rates:

Classified advertising: 2c per word  
Display advertising per inch: 35c local; 42c national  
Subscription per year: \$2.00

### Staff:

Editorial: 3  
Business: 1  
Back shop: 6  
Total: 10

### Names of Staff Members:

Sports writer: William Gant  
Adv. Mgr.: Charles H. Roberts  
Back shop foreman: R. O. Stamm  
Business Mgr.: Lora Roberts  
Regional correspondents. 27 (rate of payment \$1 per col.)  
Photographs are supplied by full-time staff photographer

### Services:

News service: INS  
Mat service  
National advertising

### Dimensions:

Page dimensions in inches; 16½x21  
Number of col. per page: 8  
Width of col. (in picas): 12  
Depth of col. (in agate lines): 294  
Average number pages per issue: 12

### Plant Equipment:

Goss Cox-O-Type newspaper press  
Job presses: 3 platen; 2 cylinder  
Two linotypes  
Addressograph

### Location and Mailing Information:

Salem is located 78 miles northeast of Carbondale on U. S. Highway 50 and is served by C&EI, B&O, and M&I railroads. The quickest mailing service between the two cities may be either of the railroads determined by the time of day for the route.

SALEM

# The Salem Republican

Salem	Population 8000	Ph. 333
Established 1861	Marion County	Republican
Publishers: Adolph Dietrick, Wm. C. Dietrick		Editor: E. M. Jones
E. M. Jones, G. E. Buhner		

Partnership **Published** (semi-weekly) **Tuesdays & Thursdays**  
 Circulation (press run figures): 3600  
 Area of distribution: Greater Marion county and parts of Fayette, Clay and Jefferson counties.

## Deadlines:

Copy deadline for news: 9 a. m. publication days (Tues. & Thurs.)  
 Advertisement deadline: Ads with mats, afternoon before pub. day, flexible deadline on others.  
 Newspaper is mailed: 2 p. m. publication days

## Rates:

Classified advertising: 1½c per word; 3c per word for 3 times.  
 Display advertising per inch: No ad accepted under \$1; 250 inches or more per month 35c; political (local) 50c; political (state) 56c  
 Subscription per year: Marion county \$2.50 outside \$3:50

## Staff:

Editorial: 3  
 Business: 2  
 Back shop: 8  
 Total: 13

## Names of Staff Members:

Sports writer: Bill Larimer  
 Adv. Mgr.: G. E. Buhner  
 Back shop foreman: Wm. C. Dietrick  
 Business Mgr.: Adolph Dietrick  
 Regional correspondents: 50 (rate of payment \$1 to \$2 per week)  
 Photographs are supplied by commercial photographers. Some are supplied free, most are purchased.

## Services:

No non-staff news services used. (Option on United Press)  
 Stamps-Conhaim-Whitehead adv. mat service  
 National advertising

## Dimensions:

Page dimensions in inches: 16¾ x 22½      Width of col. (in picas): 12  
 Number of col. per page: 8      Depth of col. (in agate lines): 294  
 Average number pages per issue: 6-8 Tuesdays; 12-16 Thursdays

## Plant Equipment:

Duplex (8-page maximum) newspaper press  
 Job presses: 2 platen, 1 cylinder, Kluge and Little Giant  
 Addressograph  
 2 linotypes

## Location and Mailing Information:

Salem is located 78 miles northeast of Carbondale on U. S. Highway 50 and is served by C&EI, B&O, and the M&I railroads. The quickest mailing service between the two cities is about the same on either of the railroads but the time of day determines the route.

*Salem Times - Commoner*

*Jan. 1956 - date*

SESSER

## The Sesser Review

Sesser Population 2100 Ph. 29  
Established 1941 Franklin County Ind  
Publisher: Geo. T. Slankard Editor: Geo. T. Slankard  
Privately owned Published Thursday  
Circulation (press run figures): 1300  
Area of distribution: Northwestern corner Franklin county, portions of Jefferson, Perry counties.

### Deadlines:

Copy deadline for news: Wednesday afternoon  
Advertisement deadline. Wednesday morning  
Newspaper is mailed: Thursday morning

### Rates:

Classified advertising: 10c per line  
Display advertising per inch: local 25c; national 30c  
Subscription per year: \$1:50

### Staff:

Editorial: 1  
Back shop: 2  
Business staff: 1  
Total varies from 3 to 5  
Number of regional correspondents varies with no standard rate of payment  
Photographs are supplied by commercial photographers and contributions from readers.

### Services:

No non-staff news service  
National advertising  
Mat service

### Dimensions:

Page dimensions (in inches): 15x22  
Number of col. per page; 6  
Width of col. (in picas): 13  
Depth of col. (in agate lines): 280  
Average number pages per issue: 6 plus

### Plant Equipment:

Miehle 25x34½ newspaper press  
22x34 Miehle automatic unit, 12x18 Kluge automatic unit  
9x12 C&P open, 12x18 C&P open  
One 6 mag. Blue Streak 14 Linotype  
Bookbinding equipment.

### Location and Mailing Information:

Sesser is located 37 miles north of Carbondale on State Highway 148 and is served by the CB&Q railroad. Rail and bus connections provide the quickest service between the two cities.

104

*Sesser Herald*  
3 Jan 1918 - 12 Apr 1933  
ceased pub.

Jan. 3 - Aug. 29, 1918  
Jan. 16, 1919 - date

SHAWNEETOWN

# The Gallatin Democrat

Shawneetown  
Established 1887  
Publisher: P. J. Valter  
Joint ownership

Population 2000  
Gallatin County

Ph. 2671  
Ind.

Editor: T. P. Scherrer  
Published Thursday

Circulation (press run figures): 1500

Area of distribution: Greater Gallatin county. Portions of Saline, White and Hardin counties.

The Gallatin Democrat is syndicated with: The Ridgway News; The Norris City News; The Carrier Mills News; and the Eldorado Examiner.

## Deadlines:

Copy deadline for news: Wednesday 10 a. m.  
Advertisement deadline: Tuesday 5 p. m.  
Newspaper is mailed: Wednesday 3 p. m.

## Rates:

Classified advertising: 3c per word  
Display advertising per inch: 50c  
Subscription per year: \$2 local; \$3 outside local area

## Staff:

Editorial: 4  
Back shop: 9  
Total: 13

## Names of Staff Members:

Sports writer: T. P. Scherrer  
Adv. Mgr.: T. P. Scherrer  
Back shop foreman: Leroy Montgomery  
Business Mgr.: P. J. Valter

Regional correspondents: 7 (Rate of payment per col. inch 5c)  
Photographs are supplied by photographer-newsman combination.

## Dimensions:

Page dimensions: 17½x22  
Number of col. per page: 8  
Width of col. (in picas): 12  
Depth of col. (in agate lines): 294  
Average number pages per issue: 10

## Services:

No non-staff news service  
Mat service  
National advertising

## Plant Equipment:

Model E Duplex newspaper press  
Three platen, one offset job press  
Four linotypes  
Fairchild engraver  
Elrod

## Location and Mailing Information:

Shawneetown is located 63 miles south east of Carbondale on State Highway 13 and is served by the B&O and L&N railroads. Since neither railroad handles mail, a route via Eldorado or Carmi provides the quickest service between the two cities.

Shawneetown News-Gleaner  
4 Sep 1914 - 31 Dec 1920

Shawneetown  
28 Oct 1953 - 25 May 1955  
T. P. Scherrer  
158  
155

**SORENTO**

## **The Sorento News**

Sorento

Population 950

Phone 12R2

Established 1931

Bond County

Rep.

Publisher: Kenneth N. Rinker

Editor: Kenneth N. Rinker

Privately owned

**Published Thursday**

Circulation (press run figures): 610

Area of distribution: Northwest corner Bond, portions of Madison, Montgomery and Macoupin counties.

### **Deadlines:**

Copy deadline for news: Wednesday p. m.

Advertisement deadline: Tuesday

Newspaper is mailed: Thursday afternoon

### **Rates:**

Classified advertising: 10c per line; third insertion free

Display advertising per inch: 35c; national 42c

Subscription per year: \$2.00 and \$2.50

### **Staff:**

Editorial: Publisher and part-time assistant

Total number on staff: 2

Regional correspondents. 4 (subscription to paper given as payment)

No regular method used for obtaining photographs.

### **Services:**

No non-staff news services

Mat service

National advertising

### **Dimensions:**

Overall page size (in inches): 22x15

Number of col. per page: 6

Width of col. (in picas): 13

Depth of col. (in agate lines): 280

Average number pages per issue: 8

### **Plant Equipment:**

Walter Scott newspaper press

Two platen job presses

One linotype

### **Location and Mailing Information:**

Sorento is located 135 miles northwest of Carbondale on U. S. Highway 66 and State Highway 127, and is served by the Nickel Plate and Burlington railroads. Rail connections provide the quickest link between the two cities. The **Sorento News** blankets the largest township (Shoal Creek) in the state of Illinois.

Jan., 1956 - date

**SPARTA**

## **News-Plaindealer**

Sparta Population 3700 Ph 3  
Established 1863 Randolph County Independent  
Publisher: Morgan & Bournier Editor: Howe V. Morgan  
Joint ownership Published Friday  
Circulation (press run figures): 4320 (4101 paid, ABC)  
Area of distribution: Greater Randolph county, portions of Jackson, Perry and Washington counties.

### **Deadlines:**

Copy deadline for news: Thursday 9 a. m.  
Advertisement deadline: Wednesday noon  
Newspaper is mailed: Thursday p. m.

### **Rates:**

Classified advertising: 2c per word  
Display advertising per inch; 50c local, 70c national

### **Staff:**

Editorial: 2  
Business: 3  
Back shop: 6  
Total: 11

### **Names of Staff Members:**

Sports writer: Howe V. Morgan  
Advertising Mgr.: Bill Morgan  
Back shop foreman: P. A. Bournier  
Business Mgr.: Howe V. Morgan

Regional correspondents: 14 (Paid 5c per col. inch)

Photographs are supplied by photographer-newsmen combination and commercial photographers.

### **Services:**

No non-staff news services  
Mat service  
National advertising

### **Dimensions:**

Overall page size (in inches): 14½ x 20  
Number of col. per page: 7  
Width of col. (in picas): 12  
Depth of col. (in agate lines): 280  
Average number of pages per issue: 14 plus

### **Plant Equipment:**

Babcock Optimus No. 7 newspaper press  
Job presses: 3 platen, 1 cylinder  
Two Intertypes  
Addressograph  
Press-type camera  
Photo engraving equipment

### **Location and Mailing Information:**

Sparta is located 50 miles northwest of Carbondale on State Highway 43, and is served by the G. M. & O. and Missouri-Illinois railroads. The I. C. to Coulterville by way of Missouri-Illinois; the I. C. to Cairo by way of G. M. & O., provide the quickest routes between the two cities.



Jan. 1956 - date

## STEELEVILLE

### Steeleville Ledger

Steeleville  
Established 1918  
Publisher: H. E. Webster  
Privately owned  
Circulation (press run figures): 1000  
Area of distribution: Portions of Perry, Jackson and Randolph counties.

Population 1212  
Ind.  
Editor: H. E. Webster  
**Published Friday**

#### Deadlines:

Copy deadline for news: Thursday a. m.  
Advertisement deadline. Thursday a. m.  
Newspaper is mailed: Friday

#### Rates:

Classified advertising: 7½ c per line, one insertion—min. 25c  
Display advertising per inch: 30c local; 35c national  
Subscription per year: \$1.50

#### Staff:

Editorial: 4  
Business: 4  
Back shop: 3  
Total: 7

#### Names of Staff Members:

Sports writer: Ruby McClure  
Adv. Mgr.: H. E. Webster  
Back shop foreman: H. E. Webster  
Business Mgr.: H. E. Webster

Regional correspondents: 5 (No standard rate of payment)  
Photographs are supplied by photo-newsman combination

#### Services:

No non-staff news services  
Mat service  
National advertising

#### Dimensions:

Page dimensions in inches; 20 x 6 col.  
Number of col. per page: 6  
Width of col. (in picas): 13  
Depth of col. (in agate lines): 280  
Average number pages per issue: 8

#### Plant Equipment:

Babcock flatbed newspaper press  
Job presses: 4 automatics; 3 hand fed  
One linotype  
Trim-O-Saw

#### Location and Mailing Information:

Steeleville is located 42 miles northwest of Carbondale in State Highway 43 and is served by Mo. Pac. railroad. The quickest mailing service to Carbondale is provided by Star Route to Chester; rail connections with Missouri Pacific railroad.

SUMNER

## The Sumner Press

Sumner Population 1100 Ph. 51  
Established 1875 Lawrence County Ind.  
Publisher: Edward E. Fortney Editor: Mrs. Twila N. Fortney  
Leased Plant **Published Thursday**  
Circulation (press run figures):1475  
Area of distribution: Greater Lawrence county and parts of Crawford, Rich-  
land, Edwards, and Wabash counties.

### Deadlines:

Copy deadline for news: Wednesday noon  
Advertisement deadline. Wednesday 10 a. m.  
Newspaper is mailed: Thursday morning

### Rates:

Classified advertising: 25c per 20 words. 1c per word additional  
Display advertising per inch: 25c contract: 30c open  
Subscription per year: \$2.00 and \$2.50  
Regional correspondents: 17 (Rate of payment—subscription free)  
Photographs are supplied by free lance photographers.

### Services:

Associated Press  
Mat service  
National advertising

### Dimensions:

Overall page size in inches: 15x22  
Number of col. per page: 6  
Width of col. (in picas): 13  
Depth of col. (in agate lines): 280  
Average number pages per issue: 12

### Plant Equipment:

Potter Jr. newspaper press  
Two platen job presses  
One linotype

### Location and Mailing Information:

Sumner is located 129 miles northeast of Carbondale on U. S. Highway 50 and is served by the B. & O. railroad. Rail connections with the B. & O. via I. C. provides the quickest mail service between the two cities.

TAMAROA

## Tamaroa Times

Tamaroa  
Establisher 1948  
Published: Norris Bierman  
Privately owned  
Circulation (press run figures): 250  
Area of distribution: Tamaroa and immediate vicinity

Population 950  
Perry County

Ph. 574  
Ind.  
Editor: Norris Bierman  
**Published Thursday**

### Deadlines:

Copy deadline for news: Wednesday  
Advertisement deadline. Wednesday  
Newspaper is mailed: Friday morning

### Rates:

Classified advertising: 3c per word; 3 times no minimum  
Subscription per year: \$2:00

### Staff:

Editorial: 2  
Business: 1  
Back shop. 3 (in Du Quoin)  
Total: 2  
Regional correspondents: None  
Photographs are supplied by news-photo combination

### Names of Staff Members:

Sports writer: Norris Bierman  
Adv. Mgr.: Norris Bierman  
Back shop foreman: Norris Bierman  
Business Mgr.: Norris Bierman

### Services:

No non-staff news services  
Mat service

### Dimensions:

Page dimensions in inches: 16 x 5 col.  
Number of col. per page: 5  
Width of col. (in picas): 12  
Depth of col. (in agate lines): 224  
Average number pages per issue: 4

### Plant Equipment:

Cranston newspaper press  
Job presses: 1 auto; 1 hand fed  
Two linotypes

### Location and Mailing Information:

Tamaroa is located 29 miles north on U. S. Highway 51 and is served by I. C. railroad and Greyhound bus lines. I. C. railroad, Greyhound and C. & H. bus lines all provide quick mailing service between the two cities.

TRENTON

## Clinton County News

Trenton Population 1800 Ph. None  
Established 1940 Clinton County Ind  
Publisher: Arthur D. Jenkins Editor. Arthur D. Jenkins  
Corporation **Published Thursday**  
Circulation (press run figures) 475  
Area of distribution: Northwest Clinton county  
Syndicated with **Carlyle Union Banner, New Baden News; Mascoutah Herald.**

### Deadlines:

Copy deadline for news: Wednesday noon  
Advertisement deadline. Wednesday noon  
Newspaper is mailed: Thursday night

### Rates:

Classified advertising: 10c per line  
Display advertising per inch: 42c  
Subscription per year. \$2.50

### Staff:

See **Mascoutah Herald**  
Regional correspondents: 3 (No standard rate of payment)  
Photographs are supplied by photographer-newsmen combination

### Services:

No non-staff news services  
Mat service  
National advertising

### Dimensions:

Overall page size (in inches): 15x30  
Number of col. per page: 6  
Width of col. (in picas): 13  
Depth of col. (in agate lines): 308  
Average number pages per issue: 8

### Plant Equipment:

See **Mascoutah Herald**

### Location and Mailing Information:

Trenton is located 90 miles northwest of Carbondale on U. S. Highway 50. I. C. railroad by way of the B. & O. lines provides the quickest service between the two cities.

Jan, 1956 - date

TRENTON

## Trenton Sun

Trenton Population 1800 Ph. 77  
Established 1880 Clinton County Ind.  
Publisher: John L. Glanzner Editor: John L. Glanzner  
Privately owned **Published Wednesday**  
Circulation (press run figures): 750  
Area of distribution: Greater Clinton county; portions of St. Clair, Madison,  
and Bond counties.

### Deadlines:

Copy deadline for news: Tuesday 3 p. m.  
Advertisement deadline. Tuesday 9 a. m.  
Newspaper is mailed: Wednesday 2 p. m. out of town; Thursday 7 a. m.  
locally.

### Rates:

Classified advertising: 2c per word, min. 25c  
Display advertising per inch: 35c  
Subscription per year: \$2.00

### Staff:

Editorial: 1  
Back shop: 1  
Total: 2  
Regional correspondents: 4 (rate of payment per col inch 5 to 8c)

### Services:

No non-staff news services  
National advertising  
Mat service

### Dimensions:

Page dimensions (overall): 21¾ x 15  
Number col. per page: 6  
Width of col. (in picas): 13  
Depth of col. (in agate lines): 273  
Average number of pages per issue: 8

### Plant Equipment:

Cottrell-Babcock newspaper press  
One platen; one cylinder job press  
One linotype

### Location and Mailing Information:

Trenton is located 90 miles northwest of Carbondale on U. S. Highway 50 and is served by the B. & O. railroad. Connections from the I. C. line provide the quickest service between the two cities.

Jan, 1956 - date

**TROY**

# The Troy Tribune

Troy	Population 1500	Ph. 4
Established: <b>Tribune</b> 1948	Madison County	Democratic
(First Troy paper 1863)		
Publisher: Paul Simon		Editor: Paul Simon
Privately owned		<b>Published Thursday</b>
Circulation (press run figures): 1080		
Area of distribution: Greater part of southeastern Madison county and portions of Bond county.		

## Deadlines:

Copy deadline for news: Tuesday evening.  
 Advertisement deadline: Tuesday evening  
 Newspaper is mailed: Thursday

## Rates:

Classified advertising: 2c per word, min. 25c  
 Display advertising per inch: 35c local; 42c national; 40c political  
 Subscription per year: \$2.00

## Staff:

Editorial: 1  
 Business: 1  
 Back shop: 2  
 Total: 4  
 Regional correspondents: 2 (No standard rate of payment)  
 Photographs are supplied by photographer-newsmen combination, free lance photographers and commercial photographers.

## Services:

No non-staff news services used  
 WNU features  
 Mat service  
 National advertising

## Dimensions:

Page dimensions in inches: 18x13½  
 Number of col. per page; 6  
 Width of col. (in picas): 13  
 Depth of col. (in agate lines): 252

## Plant Equipment:

Cranston newspaper press  
 Two platen presses  
 One linotype

## Location and Mailing Information:

Troy is located 98 miles northwest of Carbondale on U. S. Highway 40 and is served by the Pennsylvania and Illinois Terminal railroads.

June 14, 1956 - date

## VANDALIA

### The Vandalia Leader

Vandalia Population 6500 Ph. 374  
Established 1891 Fayette County Ind.  
Publisher and Editor. K. B. Mills and Charles W. Mills  
Partnership **Published Thursday**  
Circulation (press run figures): 4980  
Area of distribution: Greater Fayette county. Portions of Montgomery, Shelby, Effingham, Clay, Marion, Clinton, and Bond counties.

#### Deadlines:

Copy deadline for news: Wednesday noon  
Advertisement deadline. Tuesday 5 p. m.  
Newspaper is mailed: Wednesday 4 p. m.

#### Rates:

Classified advertising: 2c per word; 40c minimum  
Display advertising per inch. 70c national  
Subscription per year: \$2 and \$2.50

#### Staff:

Editorial: 5  
Back shop: 5  
Business: 5  
Total: 10

#### Names of Staff Members:

Sports writer: Charles W. Mills  
Adv. Mgr.: Charles W. Mills  
Back shop foreman: K. B. Mills  
Business Mgr.: K. B. Mills

Regional correspondents: 12 (Rate of payment per col. inch averages 8c)  
Photographs are supplied by photographer-newsmen combination, commercial photographers, and subscribers.

#### Services:

No non-staff news services used  
National advertising  
Mat service

#### Dimensions:

Page dimension in inches: 17½ x 24  
Number of col. per page: 8  
Width of col. (in picas): 12  
Depth of col. (in agate lines): 308  
Average number pages per issue: 12

#### Plant Equipment:

Two-revolution Scott newspaper press  
Job presses: 3 platen; 1 cylinder  
Two linotypes  
Press type camera; photo processing equipment

#### Location and Mailing Information:

Vandalia is located 100 miles due north of Carbondale on U. S. Highway 51, and is served by the I. C. and Pennsylvania railroads. The I. C. to Effingham-Pennsylvania to Vandalia route provides the quickest service between the two cities.

## The Vandalia Union

Vandalia Population 6500 Ph. 108  
Established 1864 Fayette County Ind.  
Publisher: Norman F. Jones - J. Vernie Deverick Editor Mrs. Lydia Lakin  
Mrs. Lyda Lakin

Joint ownership  
Circulation (press run figures): 3717 **Published Thursday**  
Area of distribution: Central Fayette county

### Deadlines:

Copy deadline for news: Wednesday noon  
Advertisement deadline. Tuesday noon  
Newspaper is mailed: Wednesday p. m.

### Rates:

Classified advertising: 2c per word  
Display advertising per inch: 70c  
Subscription per year: \$2.00 and \$2.50

### Staff:

Editorial: 3  
Business: combined  
Back shop: 5  
Total: 8

### Names of Staff Members:

Sports writer: Fred Jones  
Back shop foreman: Norman F. Jones

Regional correspondents: 3 (Rate of payment per col. in. 5c-10c)  
Photographs are supplied by full-time staff photographer.

### Services:

No non-staff news services used  
Mat service  
National advertising

### Dimensions:

Overall page size (in inches): 17½ x 22½  
Number of col. per page: 8  
Width of col. (in picas): 12  
Depth of col. (in agate lines): 280  
Average number pages per issue: 10

### Plant Equipment:

Goss Comet press  
Job presses: 2 platen; Kluge automatic  
Two linotypes  
Press-type camera; photo processing equipment

### Location and Mailing Information:

Vandalia is located 100 miles north of Carbondale on U. S. Highway 51, and is served by the Illinois Central and the Pennsylvania railroads. The Illinois Central to Effingham-Pennsylvania to Vandalia route provides the quickest mailing service between the two cities.



Oct. 18, 1945 - date

VIENNA

## The Vienna Times

Vandalia    Population 6500    Ph. 108  
Established 1879    Johnson County    Rep.  
Publisher: Royce L. Bridges    Editor: Royce L. Bridges  
Privately owned    **Published Thursday**  
Circulation (press run figures): 3100  
Area of distribution: Greater Johnson county; portions of Pope, Massac,  
Pulaski, Union, Williamson, and Saline counties.

### Deadlines:

Copy deadline for news: Tuesday  
Advertisement deadline: Tuesday  
Newspaper is mailed: Wednesday

### Rates:

Classified advertising: 15c per line  
Display advertising per inch: 63c national  
Subscription per year: \$2 and \$2.50

### Staff:

Editorial: 1  
Back shop: 3  
Business: 1  
Total: 5  
Regional correspondents: 20 (Rate of payment per col. 35c)  
Photographs are supplied by photographer-newsmen combination.

### Services:

No non-staff news services used  
National advertising  
Mat service

### Dimensions:

Page dimensions: 6 col. x 19¾ inches  
Number col. per page; 6  
Width of col. (in picas): 13  
Depth of col. (in agate lines): 270  
Average number pages per issue: 12

### Plant Equipment:

Babcock cylinder newspaper press  
Job presses: 2 platens; 1 cylinder  
Two linotypes  
Press-type camera

### Location and Mailing Information:

Vienna is located 40 miles southeast of Carbondale on U. S. Highway 45, and 146 and is served by the C. C. C. & St. L. (Big Four Div.) railroad. The star route (Carbondale-Vienna) provides the quickest service between the two cities.

## WASHINGTON PARK

### Canteen News

Washington Park                      Population 6500                      Ph. Upton 4-6814  
Established 1937                      St. Clair County                      Ind.  
Publisher: Kenneth J. Mollman                      Editor: Kenneth J. Mollman  
Privately owned                      **Published Friday**  
Circulation (press run figures): 1150  
Area of distribution: Northwestern St. Clair county.  
Syndicated with **Millstadt Enterprise**

#### Deadlines:

Copy deadline for news: Friday 9 a. m.  
Advertisement deadline: Thursday noon  
Newspaper is mailed: Friday 5 p. m.

#### Rates:

Classified advertising: 10c per line  
Display advertising per inch: 75c  
Subscription per year: \$2.00

#### Staff:

Printed in plant of **Millstadt Enterprise**

#### Services:

No non-staff news services used  
Mat service  
National advertising

#### Dimensions:

Overall page size (in inches): 11¾ x 16½  
Number of col. per page; 5  
Width of col. (in picas): 12  
Depth of col. (in agate lines): 210  
Average number pages per issue: 10

#### Plant Equipment:

See **Millstadt Enterprise**

#### Location and Mailing Information:

Washington Park is located about 110 miles northwest of Carbondale on State Highway 13 and is served by the I. C. railroad. The I. C. provides the quickest mailing service between the two cities.

Oct. 7, 1914 - Nov. 20, 1918  
Mar. 31, 1948 - ditto

**WATERLOO**

## **Waterloo Republican**

Waterloo Population 2500 Ph. 49-J  
Established 1843-1890 Monroe County Rep.  
Publisher, Voris, Conrad & Miller Inc. Editor: Bryant B. Voris  
Corporation **Published Wednesday**  
Circulation (press run figures): 2150  
Area of distribution. Greater Monroe county. Distribution covers an area  
10 miles north, 22 miles south, 11 miles west, and 8 miles east.  
The **Waterloo Republican** is syndicated with the **Columbia Star** and **Monroe  
County Clarion**.

### **Deadlines:**

Copy deadline for news: Wednesday 11:45 a. m.  
Advertisement deadline: Depends upon ability to handle.  
Newspaper is mailed: Wednesday 2:15 p. m.

### **Rates:**

Classified advertising: 2c per word  
Display advertising per inch: 49c  
Subscription per year. \$2.00

### **Staff:**

Editorial: 3  
Back shop: 4  
Business: Same as editorial  
Total: 7

### **Names of Staff Members:**

Sports writer. Wm. Mohr  
Adv. Mgr.: J. Rehling  
Back shop foreman: Geo. W. Miller  
Business Mgr.: Bryant B. Voris

Regional correspondents: 7 (No standard rate of payment)  
Photographs are supplied by photographer-newsmen combination; com-  
mercial photographers; subscribers.

### **Services:**

No non-staff news services used  
WNU  
National advertising  
Mat service

### **Dimensions:**

Number of col. per page: 7  
Width of col. (in picas): 12  
Depth of col. (in agate lines): 278  
Average number pages per issue: 8

### **Plant Equipment:**

Miehle newspaper press  
Job presses: 3 platen; 1 cylinder; 1 offset  
Addressograph, bookbinding equipment

### **Location and Mailing Information:**

Waterloo is located 80 miles northwest of Carbondale on State Highway 3,  
and is served by the G. M. & O. railroad. Rail connections with the G. M. &  
O. and Gulf Transport bus service provide the quickest service between the  
two cities.

Jan., 1956 - date

**WATERLOO**

## **Waterloo Times**

Waterloo Population 2900 Ph. 10  
Established 1868 Monroe County Dem.  
Publishers: Louis A. Dalkert, Herman Dalkert Editor: Louis A. Dalkert  
Armin L. Dalkert

Joint ownership **Published Thursday**  
Circulation (press run figures): 1575  
Area of distribution: Greater Monroe county. Portions of St. Clair and Randolph counties.

### **Deadlines:**

Copy deadline for news: Wednesday noon  
Advertisement deadline: Tuesday noon  
Newspaper is mailed: Thursday noon

### **Rates:**

Classified advertising: 1c per word; minimum 30c  
Display advertising per inch: local 35c; national 42c  
Subscription per year: \$2.00

### **Staff:**

Editorial: 2  
Back shop: 2  
Business: 3  
Total: 4

### **Names of Staff Members:**

Sports writer: Herman Dalkert  
Adv. Mgr.: Herman Dalkert  
Back shop foreman: Armin Dalkert  
Business Mgr.: Louis A. Dalkert  
Regional correspondents: 3 (rate of payment per col. inch 5c)  
Photographs are supplied by commercial photographers.

### **Services:**

No non-staff news services  
National advertising  
Mat service

### **Dimensions:**

Page dimensions (in inches): 17½ x 22  
Number of col. per page: 7  
Width of col. (in picas): 13  
Depth of col. (in agate lines): 280  
Average number pages per issue: 8

### **Plant Equipment:**

Cranston 2-page newspaper press  
Two platen job presses  
One linotype

### **Location and Mailing Information:**

Waterloo is located 80 miles northwest of Carbondale on State Highway 3, and is served by the G. M. & O. railroad. Rail connections with the G. M. & O. provide the quickest service between the two cities.

Dec., 1931 - date

WEST FRANKFORT

## The Daily American

West Frankfort Population 12,350 Ph. 48  
Established 1916 Franklin County Rep.  
Publisher: Daily American Co. Inc. Editor: Roger G. Kelly  
Corporation **Published daily except Sunday**  
Circulation (press run figures): 6573  
Area of distribution. Greater Franklin county. Portions of Jefferson, Perry,  
Jackson, Saline, and Hamilton counties.

### Deadlines:

Copy deadline for news: 2 p. m. daily  
Advertisement deadline: Noon day prior to publication  
Newspaper is mailed: Daily 5 p. m.

### Rates:

Classified advertising: 5c per word  
Display advertising per inch: 70c  
Subscription per year: \$5 in Franklin and Williamson; \$6 outside

### Staff:

Editorial: 6  
Back shop: 13  
Business: 5  
Total: 24

### Names of Staff Members:

Back shop foreman: T. J. Elkins  
Business Mgr.: W. Henson Purcell  
Editor: Roger G. Kelly

Regional correspondents: 2 (No standard rate of payment)  
Photographs are supplied by photographer-newsmen combination; commercial photographers.

### Services:

United Press  
King Features  
National advertising  
Mat service

### Dimensions:

Page dimensions in inches: 16½ x 21  
Number of col. per page: 8  
Width of col. (in picas): 12  
Depth of col. (in agate lines): 290  
Average number pages per issue: 10

### Plant Equipment:

Model E Duplex newspaper press  
Three platen job presses  
Four linotypes  
Elrod, addressograph; press-type camera

### Location and Mailing Information:

West Frankfort is located 34 miles northeast of Carbondale on State Highway 37 and is served by the C. & E. I., Burlington railroads. Regular U. S. mail channels provide the quickest service between the two cities.

WEST SALEM

## West Salem Advocate

West Salem  
Established 1900  
Publisher: H. F. Gerlach  
Privately owned

Population 1004  
Edwards County

Ph. 5220  
Ind.-Rep.

Editor: H. F. Gerlach  
**Published Wednesday**

Circulation: (1154 P. O. Sworn)

Area of distribution: Greater Edwards, Wabash and Richland counties;  
portions of Wayne and Lawrence counties

### Deadlines:

Copy deadline for news: Wednesday 8:30 a. m. except "spot" news.

Advertisement deadline: Tuesday 5 p. m.

Newspaper is mailed: Wednesday afternoon and Thursday morning.

### Rates:

Classified advertising: 10c per line

Display advertising per inch: Local 35c; national and political 42c

Subscription per year: \$2.00 and \$2.50

### Staff:

Editorial: 2

Business: 1

Back shop: 2

Total: 3

Regional correspondents: 7 (No standard rate of payment)

Photographs are supplied by no regular method

### Names of Staff Members:

Sports writer: H. F. Gerlach

Adv. Mgr.: H. F. Gerlach

Back shop foreman: H. F. Gerlach

Business Mgr.: H. F. Gerlach

### Services:

No non-staff news services

National advertising

Mat service

### Dimensions:

Page dimensions: 120 inches (overall)

Number of col. per page: 6

Width of col. (in picas). 12

Depth of col. (in agate lines): 280

Average number of pages per issue: 6

### Plant Equipment:

Newspaper press (model not designated)

Two platen job presses

One linotype

Page casting box

### Location and Mailing Information:

West Salem is located 125 miles northeast of Carbondale just off State Highway 130 and is served by the Illinois Central railroad. Quickest mailing service is via Star Route.

Jan., 1956 - date

## WOOD RIVER

### The Journal

Wood River  
Established 1920  
Publisher: J. A. Wilson  
Corporation

Population 12,000  
Madison County

Ph. 4-4344  
Ind.

Editor: Les H. Forman  
Published Thursday

Circulation (press run figures): 4872

Area of distribution: Wood River and immediate vicinity

#### Deadlines:

Copy deadline for news: Thursday noon  
Advertisement deadline. Wednesday noon  
Newspaper is mailed: Friday 10 a. m.

#### Rates:

Classified advertising: 3c per word  
Display advertising per inch: 75c open  
Subscription per year: \$2:50 mail: 5c per issue (carrier)

#### Staff:

Editorial: 5  
Back shop: 10  
Business: 3  
Advertising: 2  
Circulation: 2  
Total: 20

#### Names of Staff Members:

Sports writer: George Leighty  
Adv. Mgr.: N. J. Venardos  
Back shop foreman: R. J. Wilson  
Business Mgr.: J. A. Wilson

Regional correspondents: 12 (rate of payment per col. \$1.50)  
Photographs are supplied by photographer-newsmen combination.

#### Services:

No non-staff news services  
National advertising  
Mat service

#### Dimensions:

Page dimensions in inches: 16½x21  
Number of col. per page: 8  
Width of col. (in picas): 12  
Depth of col. (in agate lines): 294  
Average number pages per issue: 20

#### Plant Equipment:

Goss Cox-O-Type newspaper press  
Miller Simplex job press  
Three platen job presses; one cylinder  
Three linotypes  
Addressograph, press-type camera, APL and monotype, folder, stereotype equipment.

#### Location and Mailing Information:

Wood River is located 125 miles northwest of Carbondale on State Highway 67A, and is served by the G. M. & O.; C. B. & Q.; N. Y. Central; and Illinois Terminal railroads. Regular U. S. mail service provides the quickest service between the two cities.

**ZEIGLER**

## **The Zeigler News**

Zeigler  
Established 1919  
Publisher: M. A. Gurley  
Privately owned

Population 3000  
Franklin County

Ph. None  
Rep.  
Editor: M. A. Gurley  
**Published Friday**

Circulation (press run figures): 750

Area of distribution: South-central Franklin county and portion of William-son county.

### **Deadlines:**

Copy deadline for news: Tuesday  
Advertisement deadline: Tuesday  
Newspaper is mailed: Thursday

### **Rates:**

Classified advertising: 15c per line  
Display advertising per inch: 35c  
Subscription per year: \$2:00

### **Staff:**

Editorial: 1  
Business: 1  
Back shop: 1  
Total: 1

Regional correspondents: None  
Photographs are supplied by no regular method

### **Names of Staff Members:**

Sports writer: M. A. Gurley  
Adv. Mgr.: M. A. Gurley  
Back shop foreman: M. A. Gurley  
Business Mgr.: M. A. Gurley

### **Services:**

News services: Western Newspaper Union  
Mat service  
National advertising

### **Dimensions:**

Page dimensions in inches: 140  
Number of col. per page: 7  
Width of col. (in picas): 13  
Depth of col. (in agate lines): 280  
Average number of pages per issue: 6

### **Plant Equipment:**

Huber newspaper press  
Two platen job presses  
One linotype

### **Location and Mailing Information:**

Zeigler is located 22 miles east of Carbondale on State Highway 148 and is served by the I. C., C. B. & Q. and Mo. P. railroads. The Illinois Central railroad and bus lines provide the quickest mailing service between the two cities.



# Southern Illinois Newspapers By Counties

## ALEXANDER

Cairo—The Cairo Evening Citizen

## BOND

Greenville—The Greenville Advocate    Sorento—The Sorento News  
Pocahontas—The News Patriot

## CLAY

Clay City—Clay County Advocate    Flora—Flora Sentinel  
Flora—Daily News-Record    Louisville—Clay County Republican

## CLINTON

Breese—Breese Journal    New Baden—New Baden News  
Carlyle—Union Banner    Trenton—Clinton County News  
Carlyle—Carlyle Democrat    Trenton—Trenton Sun

## EDWARDS

Albion—Albion Journal-Register    West Salem—West Salem Advocate

## FAYETTE

Farina—The Farina News    Vandalia—The Vandalia Leader  
Ramsey—Ramsey News-Journal    Vandalia—The Vandalia Union  
St. Elmo—St. Elmo Banner

## FRANKLIN

Benton—Benton Evening News    Sesser—The Sesser Review  
Benton—Benton Standard    West Frankfort—The Daily American  
Christopher—The Progress    Zeigler—The Zeigler News

## GALLATIN

Ridgway—Ridgway News    Shawneetown--The Gallatin Democrat

## HAMILTON

Dahlgren—Dahlgren Echo    McLeansboro—Times-Leader

## HARDIN

Elizabethtown--Hardin County Independent

## JACKSON

Ava—The Ava Citizen    Elkhville—Elkhville Journal  
Carbondale—Southern Illinoisan  
Free Press Edition    Gorham—The Gorham Tower  
Carbondale—Carbondale Herald    Murphysboro—Southern Illinoisan  
Daily Independent Edition

## JEFFERSON

Ina—The Ina Observer

Mt. Vernon—Mt. Vernon Register-  
News

## JOHNSON

Vienna—The Vienna Times

## LAWRENCE

Bridgeport—Bridgeport Leader  
Lawrenceville—Lawrence County  
News

Lawrenceville—The Daily Record  
Sumner—The Sumner Press

## MADISON

Alton—Alton Evening Telegraph  
Collinsville—Collinsville Herald  
Edwardsville—Edwardsville Intelli-  
gencer  
Granite City—Noroden Glas  
Granite City—Granite City Press-  
Record

Highland—Highland Journal  
Highland—News-Leader  
Madison—Republic & Tribune  
Troy—The Troy Tribune  
Wood River—The Journal

## MARION

Centralia—Centralia Evening Sentinel  
Kinmundy—The Kinmundy Express

Salem—Marion County Democrat  
Salem—The Salem Republican

## MASSAC

Brookport—The Brookport Inde-  
pendent

Metropolis—The Metropolis News

## MONROE

Columbia—Monroe County Clarion  
Columbia—Columbia Star

Waterloo—Waterloo Republican  
Waterloo—The Waterloo Times

## PERRY

Du Quoin—Du Quoin Evening Call  
Du Quoin—Du Quoin News  
Pinckneyville—The Democrat

Pinckneyville—The Perry County  
Advocate  
Tamaroa—Tamaroa Times

## POPE

Golconda—Herald-Enterprise

## PULASKI

Mound City—Pulaski Enterprise

Mounds—Mounds Independent

## RANDOLPH

Chester—Chester Herald-Tribune  
Coulterville—Coulterville Republican  
Prairie du Rocher—The Sun

Red Bud—Red Bud Pilgrim  
Sparta—News-Plaindealer  
Steeleville—Steeleville Ledger

## **RICHLAND**

Noble—The Noble News  
Olney—Olney Advocate

Olney—Olney Daily Mail  
Olney—The Olney Times

## **ST. CLAIR**

Belleville—Belleville Daily Advocate  
Belleville—Belleville News-Democrat  
East St. Louis—The Negro Crusader  
Dupou—Herald Tribune  
East St. Louis—The Messenger  
East St. Louis—East St. Louis Press  
East St. Louis—East St. Louis Journal  
East St. Louis—The Reporter

Freeburg—Freeburg Tribune  
Lebanon—The Advertiser  
Marissa—Marissa Messenger  
Mascoutah—Herald  
Millstadt—Millstadt Enterprise  
New Athens—Journal-Press  
O'Fallon—O'Fallon Progress  
Washington Park—Canteen News

## **SALINE**

Carrier Mills—Carrier Mills News  
Eldorado—Eldorado Daily Journal

Eldorado—Examiner  
Harrisburg—The Daily Register

## **UNION**

Anna-Jonesboro—The Gazette-Demo-  
crat

Cobden—The Cobden Review  
Dongola—Dongola Tri-County Record

## **WABASH**

Mt. Carmel—Daily Republican-  
Register

Mt. Carmel—Wabash Weekly News

## **WASHINGTON**

Ashley—Washington County Gazette  
Nashville—Nashville Journal

Nashville—The Nashville News  
Okawville—Okawville Times

## **WAYNE**

Fairfield—Wayne County Press

Fairfield—Wayne County Record

## **WHITE**

Carmi—Carmi Democrat-Tribune  
Carmi—Carmi Times.  
Enfield—Enfield News

Grayville—Mercury-Independent  
Norris City—Norris City News

## **WILLIAMSON**

Carterville—Carterville Herald  
Herrin—Southern Illinoisan  
The Daily Journal Edition

Johnston City—Johnston City  
Progress  
Marion—Marion Weekly Leader  
Marion—Marion Daily Republican

## Index To Southern Illinois Newspapers With Weekly And Daily Classifications

TOWN	NEWSPAPER	Daily	Weekly	Page
Albion	Albion Journal-Register		X	3
Alton	Alton Evening Telegraph	X		4
Anna-Jonesboro	The Gazette-Democrat		X	5
Ashley	The Washington County Gazette		X	6
Ava	The Ava Citizen		X	7
Belleville	Belleville Daily Advocate	X		8
Belleville	Belleville News-Democrat	X		9
Benton	Benton Evening News	X		10
Benton	Benton Standard		X	11
Breese	Breese Journal		X	12
Bridgeport	Bridgeport Leader		X	13
Brookport	The Brookport Independent		X	14
Cairo	The Cairo Evening Citizen	X		15
Carbondale	The Carbondale Herald		X	16
Carbondale	Southern Illinoisan (Free Press Edition)	X		17
Carlyle	Carlyle Democrat		X	18
Carlyle	Union Banner		X	19
Carmi	Carmi Democrat-Tribune	X		20
Carmi	Carmi Times		X	21
Carrier Mills	Carrier Mills News		X	22
Carterville	Carterville Herald		X	23
Centralia	Centralia Evening Sentinel	X		24
Chester	Chester Herald-Tribune		X	25
Christopher	The Progress		X	26
Clay City	Clay County Advocate		X	27
Cobden	The Cobden Review		X	28
Collinsville	Collinsville Herald		X	29
Columbia	Monroe County Clarion		X	30
Columbia	Columbia Star		X	31
Coulterville	The Coulterville Republican		X	32
Dahlgren	Dahlgren Echo		X	33
Dongola	Dongola Tri-County Record		X	34
Dupo	Herald Tribune		X	35
Du Quoin	Du Quoin Evening Call	X		36
Du Quoin	Du Quoin News		X	37
East St. Louis	East St. Louis Journal	X		38
East St. Louis	The Messenger		X	39
East St. Louis	East St. Louis Press		X	40
East St. Louis	The Reporter		X	41
Edwardsville	Edwardsville Intelligencer	X		42
Eldorado	Examiner		Semi-Weekly	43
Eldorado	Eldorado Daily Journal	X		44
Elizabethtown	Hardin County Independent		X	45
Elkville	Elkville Journal		X	46

Enfield	Enfield News	X	47
Fairfield	Wayne County Press	X	48
Fairfield	Wayne County Record	X	49
Farina	The Farina News	X	50
Flora	Daily News-Record	X	51
Flora	Flora Sentinel	Semi-Weekly	52
Freeburg	Freeburg Tribune	X	53
Golconda	Herald-Enterprise	X	54
Gorham	The Gorham Tower	X	55
Granite City	Naroden Glas	X	56
Granite City	Granite City Press-Record	Semi-Weekly	57
Grayville	Mercury-Independent	X	58
Greenville	The Greenville Advocate	Semi-Weekly	59
Harrisburg	The Daily Register	X	60
Herrin	Southern Illinoisan (Daily Journal Edition)	X (See page 17)	
Highland	Highland Journal	X	61
Highland	News Leader	X	62
Ina	The Ina Observer	X	63
Johnston City	Johnston City Progress	X	64
Kinmundy	The Kinmundy Express	X	65
Lawrenceville	Lawrence County News	X	66
Lawrenceville	The Daily Record	X	67
Lebanon	The Advertiser	X	68
Louisville	Clay County Republican	X	69
Madison	Republic & Tribune	X	70
Marion	Marion Weekly Leader	X	71
Marion	Marion Daily Republican	X	72
Marissa	Marissa Messenger	X	73
Mascoutah	Herald	X	74
McLeansboro	Times-Leader	X	75
Metropolis	The Metropolis News	X	76
Millstadt	Millstadt Enterprise	X	77
Mounds	Mounds Independent	X	78
Mound City	Pulaski Enterprise	X	79
Mt Carmel	Wabash Weekly News	X	80
Mt. Carmel	Daily Republican-Register	X	81
Mt. Vernon	Mt Vernon Register-News	X	82
Murphysboro	Southern Illinoisan (Daily Independent Edition)	X (See page 17)	
Nashville	Nashville Journal	X	83
Nashville	The Nashville News	X	84
New Athens	Journal-Press	X	85
New Baden	New Baden News	X	86
Noble	The Noble News	X	87
Norris City	The Norris City News	X	88
O'Fallon	O'Fallon Progress	X	89
Okawville	Okawville Times	X	90
Olney	The Olney Advocate	X	91
Olney	Olney Daily Mail	X	92
Olney	The Olney Times	X	93

Pinckneyville	The Perry County Advocate	X	94
Pinckneyville	The Democrat	X	95
Pocahontas	The News Patriot	X	96
Prairie du Rocher	The Sun	X	97
Ramsey	Ramsey News-Journal	X	98
Red Bud	Red Bud Pilgrim	X	99
Ridgway	The Ridgway News	X	100
St. Elmo	St. Elmo Banner	X	101
Salem	Marion County Democrat	X	102
Salem	The Salem Republican	Semi-Weekly	103
Sesser	The Sesser Review	X	104
Shawneetown	The Gallatin Democrat	X	105
Sorento	The Sorento News	X	106
Sparta	News-Plaindealer	X	107
Steeleville	Steeleville Ledger	X	108
Sumner	The Sumner Press	X	109
Tamaroa	Tamaroa Times	X	110
Trenton	Clinton County News	X	111
Trenton	Trenton Sun	X	112
Troy	The Troy Tribune	X	113
Vandalia	The Vandalia Leader	X	114
Vandalia	The Vandalia Union	X	115
Vienna	The Vienna Times	X	116
Washington Park	Canteen News	X	117
Waterloo	Waterloo Republican	X	118
Waterloo	The Waterloo Times	X	119
West Frankfort	The Daily American	X	120
West Salem	West Salem Advocate	X	121
Wood River	The Journal	X	122
Zeigler	The Zeigler News	X	123

## Southern Illinois Newspapers No Longer Being Published Because of Consolidations or Discontinuations

East St. Louis—**Monsanto Tri-Town Herald** (Merged with **Dupo Herald-Tribune** and **New Athens Journal-Press**)

East St. Louis—**St. Clair County Record** (Discontinued.)

Edwardsville—**Madison County News** (Discontinued.)

Eldorado—**Eldorado News** (Discontinued.)

McLeansboro—**March of Progress** (Merged with **Times-Leader**.)

Metropolis—**Republican Herald** (Consolidated with **Metropolis News** March, 1949.)

St. Francisville—**Times** (Combined with **Bridgeport Leader**.)

X 1000	The Daily News	1890
X 1001	The Daily News	1891
X 1002	The Daily News	1892
X 1003	The Daily News	1893
X 1004	The Daily News	1894
X 1005	The Daily News	1895
X 1006	The Daily News	1896
X 1007	The Daily News	1897
X 1008	The Daily News	1898
X 1009	The Daily News	1899
X 1010	The Daily News	1900
X 1011	The Daily News	1901
X 1012	The Daily News	1902
X 1013	The Daily News	1903
X 1014	The Daily News	1904
X 1015	The Daily News	1905
X 1016	The Daily News	1906
X 1017	The Daily News	1907
X 1018	The Daily News	1908
X 1019	The Daily News	1909
X 1020	The Daily News	1910
X 1021	The Daily News	1911
X 1022	The Daily News	1912
X 1023	The Daily News	1913
X 1024	The Daily News	1914
X 1025	The Daily News	1915
X 1026	The Daily News	1916
X 1027	The Daily News	1917
X 1028	The Daily News	1918
X 1029	The Daily News	1919
X 1030	The Daily News	1920

Southern Illinois Newspapers No Longer Being Published Because of Contributions or

Discontinuations

The following is a list of newspapers in Southern Illinois which have been discontinued or are no longer being published because of contributions or discontinuations:

- 1. The Daily News (1920-1921)
- 2. The Daily News (1921-1922)
- 3. The Daily News (1922-1923)
- 4. The Daily News (1923-1924)
- 5. The Daily News (1924-1925)
- 6. The Daily News (1925-1926)
- 7. The Daily News (1926-1927)
- 8. The Daily News (1927-1928)
- 9. The Daily News (1928-1929)
- 10. The Daily News (1929-1930)
- 11. The Daily News (1930-1931)
- 12. The Daily News (1931-1932)
- 13. The Daily News (1932-1933)
- 14. The Daily News (1933-1934)
- 15. The Daily News (1934-1935)
- 16. The Daily News (1935-1936)
- 17. The Daily News (1936-1937)
- 18. The Daily News (1937-1938)
- 19. The Daily News (1938-1939)
- 20. The Daily News (1939-1940)
- 21. The Daily News (1940-1941)
- 22. The Daily News (1941-1942)
- 23. The Daily News (1942-1943)
- 24. The Daily News (1943-1944)
- 25. The Daily News (1944-1945)
- 26. The Daily News (1945-1946)
- 27. The Daily News (1946-1947)
- 28. The Daily News (1947-1948)
- 29. The Daily News (1948-1949)
- 30. The Daily News (1949-1950)

Springfield - Ill. State Register

7 Jan 1847 - 1 Mar 1867

Hillsboro - Montgomery County News

1892-1906

1908-date

Evansville (Ind) Enterprise

4 June 1918 - date



