

7-26-1991

The Daily Egyptian, July 26, 1991

Daily Egyptian Staff

Follow this and additional works at: https://opensiuc.lib.siu.edu/de_July1991
Volume 76, Issue 180

Daily Egyptian

Southern Illinois University at Carbondale

Friday, July 26, 1991, Vol. 76, No. 180, 12 Pages



Staff Photo by Heidi Diedrich

Let's go bowling

Maria Guada Lupe Ortiz, 11, daughter of Juliana and Gilberto Ortiz of Cobden, puts on the final touch by making a design on a bowl she made at the Craft Shop Thursday.

Waste wastes

Hazardous chemical cleanup takes away from SIU budget

By John Patterson
Staff Writer

Hazardous waste has become a growing problem at SIUC, and now that action is being taken to alleviate it the rest of the University's budgets will suffer.

In following guidelines for the use and disposal of chemicals both known and unknown, the University has created a stockpile that requires a mountain of money to dispose of under new rules, said SIUC President John C. Guyon.

SIUC is not authorized to dispose of its own waste and therefore keeps it in several storage rooms until proper identification and disposal procedures are met.

The University was cited by the Illinois Environmental Protection Agency to develop plans for

disposing of chemicals during the next year, Guyon said.

"It's going to cost us a ton," he said.

The University already spent \$80,000 in developing closure plans for the IEPA, and upwards of \$2 million is needed to begin covering regulations for disposal, he said.

Before SIUC can dispose of any chemicals they must be analyzed and identified. Then the University must submit a procedure showing what the University is identifying is what really is being disposed.

Developing analytical capabilities on campus would cost nearly \$2 million, a figure Guyon called an exorbitant waste.

The University cannot dispose of

see WASTE, page 5

Route eliminated from proposed city connector

By Leslie Colp
Staff Writer

One of three routes proposed to connect the east and west ends of Carbondale was eliminated by engineers.

At an advisory group meeting Thursday night, Springfield-based Hanson Engineers, Inc. presented results from a public information meeting on June 13 when residents were asked to submit their preferences for the three routes.

Of the 105 residents stating a preference, 32 percent preferred the northern route, 25 percent, the

southern route and seven percent, the middle route.

The middle route was eliminated, but the option of not to build the four-lane highway exists. Thirty-six percent of those who responded indicated not building was their preference.

The middle route would have cut through part of the golf course, now under construction.

The highway, if built, is expected to re-route traffic that would otherwise go through the city.

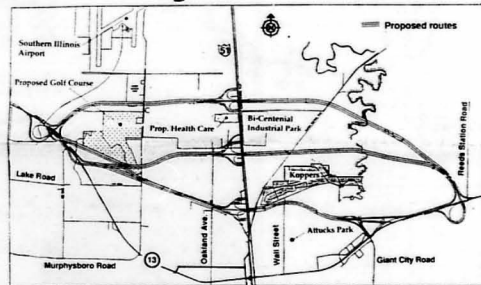
John Coombe, vice president of Hanson Engineers, said even though more people said they did

not want the highway to be built, there is no significant difference in the percentages and "until (the Illinois Department of Transportation) and the city tell us to stop studying, we will continue.

"Our job is to decide where to build the road if the road is to be built," he said.

As originally proposed, the northern route would intersect at Reeds Station Road, go north of the Bi-Centennial Industrial Park and intersect Route 13 near Airport Road, and the southern route

see ROAD, page 5



Russell Swift/Daily Egyptian

This map depicts Carbondale bypass routes as shown at a meeting June 13.

Guyon calls for building of facility for on-campus day-care program

By Christiann Baxter
Staff Writer

The construction of an on-campus day-care facility is a necessity, said SIUC President John C. Guyon.

Guyon responded Wednesday at the Graduate and Professional Student Council meeting to the council's concern for the elimination of the infant and toddler program Aug. 2 at Rainbow's End, a day-care facility for the children of SIUC students, faculty and staff.

Guyon said he had no short-term answer to the problem.

"I can't solve the problem

immediately," he said. "We're going to build an on-campus day-care facility with your support."

Guyon said there is a 25,000-square-foot floor plan for a building that would house most of the University's child care related projects, including Headstart, Rainbow's End, the Child Development Laboratory and the Quigley night-care program. The building would cost \$70 a square foot.

The programs' funding would provide \$1 million of the cost of the building, Guyon said. There would be \$750,000 not covered.

"My presumption, ladies and gentleman, is that we will come to

you," he said.

Many buildings in Carbondale, from nursing homes to the Student Center, were looked at as potential sites to be leased for Rainbow's End. Guyon said modifications to make the buildings meet fire codes would be very expensive and didn't make much sense.

Day-care centers with infants and toddlers must meet strict fire codes in order to be licensed. Infants and toddlers legally can't be cared for unless the facility is licensed, said Cheryl Walton, program director of Rainbow's End.

see CARE, page 5

Iraq shows no indication of revealing capabilities

WASHINGTON (UPI) — The White House said Thursday there is no evidence that Iraq has complied with a U.N. deadline to fully disclose its chemical, biological and nuclear weapons capabilities.

"This was a U.N. marker to judge whether or not the Iraqi government — and Saddam Hussein — is operating in good faith to meet the requirements of U.N. resolutions," said White House spokesman Roman Popadiuk.

"Unfortunately, it appears that he has not met that requirement," he added.

In the absence of any communication from Baghdad, Popadiuk accused Saddam of following a "track record of trying to forestall compliance and trying to divert attention from the issue" of his defense capabilities.

see IRAQ, page 5

Soviet party split requested

Gorbachev: 'Demagogues' can get out

MOSCOW (UPI) — President Mikhail Gorbachev, addressing the Central Committee of the Communist Party, called Thursday for a split in the organization and the exit from its ranks of "demagogues."

"The time has come for everyone to find their place," Gorbachev, the party general secretary, told a full meeting, of the

350-member Central Committee. Gorbachev, who for six years has headed what was once the world's most monolithic party, apparently has given up on it as an engine for reform and sees party conservatives as blocking liberalization.

"A withdrawal of some of the movements who oppose

see SOVIET, page 5

Gus Bode



Gus says basically Gorbachev told party members "if you don't like it there's the door."

THIS MORNING

NEWS

High schoolers visiting campus

—Page 3

Student sculptor displays works

—Page 6

SPORTS

Athletic budget misses big cuts

—Page 12

INDEX

Opinion —Page 4

Classified —Pages 8-10

Crossword —Page 5

WEATHER

Partly cloudy, 90s

Sports

Daily Egyptian

Southern Illinois University at Carbondale

Budget relief

University Athletic Department misses major cuts with help of NCAA reward

By Rob Neff
Staff Writer

University department heads are doing their best "Chicken Little" impersonations, calling for major cuts across the board and predicting widespread misery and pain as SIUC tries to adjust \$600,000 less than the 1991 budget.

But the SIUC Athletic Department really is not complaining.

The Athletic Department's \$3,810,873 budget is only two percent less than its budget last year.

The fact the athletic department escaped monstrous budget cuts is not a reflection that University officials are placing greater emphasis on the Saluki sports program.

The program received a \$201,700 NCAA distribution for the first time this year in recognition of the merits of the SIUC athletic programs.

The athletic department budget gives increased funding to eight sports programs, some by as much as \$20,000 and cuts the budget of five sports, including football, which received a \$49,000 cut.

Defensive line coach Ralph Young said the cut mainly is a result of decreased travel expenses for the 1991 season.

Sports Analysis

"We're not flying to South Carolina and we're not flying to Florida," he said. "It costs \$20,000 to \$25,000 to get a chartered flight, and we had to do that twice last year but this year we can take the bus to all of our road games."

Young said the football department will have to make other cuts as well, but they will be small and spread out.

"We're going to trim a little off each area," he said. "It's like working with a household budget. You take a little off here and a little off there and you have your saving."

The money saved by the football team's decrease in travel expenses is being used to help fund other teams' increased travel costs.

The women's basketball team received a \$17,300 increase in its budget.

Cindy Scott, head coach of the team, said the increase reflects the team's travel costs.

"Our increase directly reflects and increase in our travel costs and mandatory expenditure," she said. "I'm pleased with the budget. I think it provides the means to run a first class program."

see BUDGET, page 11

Saluki athletic program benefits from TV spots

By John Sommerhof
Staff Writer

Saluki athletic officials have found a way to bring SIUC athletics to 60 million homes next season—television.

Missouri Valley Conference officials have scheduled four Saluki games in their television syndication network with two of the games to be shown on ESPN.

Doug Elgin, commissioner of the MVC, said the broadcast will reach 60 million homes.

"In this day and age it is very important for college sports to be nationally distributed," Elgin said.

"The televising of games helps the universities recruit students and student athletes," he said.

Elgin said there is a strong market for basketball in Southern Illinois and Saluki basketball always has produced high ratings in the area.

SIUC athletic director Jim Hart said televising games creates an awareness for the University and helps alumni stay in touch with what is happening.

Saluki men's basketball coach Rich Herrin also likes the TV coverage his team receives.

"I guess other teams could scout us by watching the games," Herrin said. "But they would get tapes if we were not on television."

"When we get televised it just is one more positive step towards a better basketball

see SALUKI, page 11



Staff Photo by Mark Busch

High-strung

Nick Ronketto of Makanda puts away a lob Thursday afternoon at the tennis courts across the street from Campus Square Apartments.

Seles charges recent feud with Graf must be put away

SAN DIEGO (UPI) — Monica Seles says she would rather exchange groundstrokes than barbs with Steffi Graf.

Graf criticized Seles on Monday for pulling out of the Federation Cup in England. Seles said on Wednesday that Graf should calm down. On Thursday, Graf herself pulled out of the Federation Cup because of injury.

"Steffi has the right to her opinion as I have the right to mine," Seles said by telephone from her family's home in Sarasota, Fla. "But I think the top players should work together and not accuse each other."

Seles, the world's No. 1 player, mysteriously dropped out of Wimbledon three days before the start of the tournament. She then dropped out of sight.

At the start of an exhibition tournament in Mahwah, N.J.,

last week the 17-year-old insisted her Wimbledon withdrawal stemmed from shin splints and a slight stress fracture of her left leg, and had nothing to do with a rumored pregnancy or a supposed bonus clause in her contract with her racket sponsor.

"The pregnancy was the most absurd," she said.

Seles said she played in Mahwah to test her leg. She is scheduled to play in a tournament in San Diego next week. Graf said she doesn't think that was right. However, Seles says it would have been too great a strain to play in Mahwah, the Federation Cup and San Diego.

"I want to see a doctor in Mahwah," Seles said. "He told me ... three weeks in a row wasn't wise. He thought I should be resting it, and that the

see FEUD, page 11

Dolphins, Bears open preseason

International trips next on NFL team schedule

MIAMI (UPI) — The Miami Dolphins will start Dan Marino at quarterback against the Chicago Bears' Jim Harbaugh Friday night when the two teams open the NFL's exhibition season at Joe Robbie Stadium.

In the other exhibition games this weekend, the Denver Broncos meet the Detroit in the Hall of Fame Bowl at Canton, Ohio, Saturday and Philadelphia and Buffalo tangle in London Sunday.

The Dolphins and Bears go the international route themselves the following weekend. Miami takes on the Los Angeles Raiders in the Tokyo Dome and the Bears play San Francisco in Berlin, both Aug. 3.

This is the second straight year the Dolphins and Bears have opened the preseason against each other. Last year in Chicago, the Bears won 10-6.

Dolphins Coach Don Shula said Marino would play the first quarter and maybe half of the second depending on how long Miami has the ball. Backups Scott Secules and Scott Mitchell will play the rest of

Ditka said he will use all his healthy players.

"We want to play a lot of people and we want to see how well they play," he said. "You really want to look at Jim (Harbaugh) and 'P.T.' (Peter Tom Willis) and the other kids, too."

The offensive and defensive first units will see limited action so Ditka and the coaches can judge the rest of the players. But offensive tackles John Wojciechowski and No. 1 pick Stan Thomas will see plenty of action because they are the only legitimate tackles in camp.

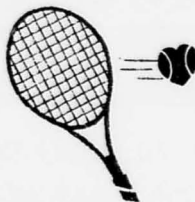
Both sides will be missing starters. Four other Bears have yet to sign and have not reported. They are tight end James Thornton, wide receiver Ron Morris, fullback Brad Muster and kicker Kevin Butler.

Miami's problems run even deeper. Seven starters have failed to sign, plus two others including kicker Pete Stoyanovich.

Starting defensive end T.J. Turner signed Thursday and reported to camp. His status for the Friday night game was uncertain.

Take your heart to court.

Exercise serves you right.



American Heart Association
WE'RE FIGHTING FOR YOUR LIFE

ABC Liquor Mart
Weg Capital of Southern Illinois

KegMan Says, Having A Party? Buy your Kegs at ABC & Save!

Bud \$10⁹⁹
Reg. Light & Dry
24-12 oz. cans

Old Milwaukee \$7⁹⁹
Reg. & Light
24-12 oz. cans

Hamms \$6⁹⁹
Reg. & Draft
24-12 oz. cans

LOWENBRAU \$6¹⁹
12 pack bottles

Gilbey's \$8²⁸
vodka
1.75 Liter

Seagram's \$12²²
Gin
1.75 Liter

WALKERS \$5²²
De Luxe Bourbon
750 ml.

Monterey \$7²⁹
Cabernet Sauvignon Chardonnay
1.5 Liter

Corbett Canyon \$2²²
White Zinfandel
750 ml.

BARTLES JAYMES \$2²²
4 pack

Prices Good Only At: ABC LIQUOR MART
109 N. Washington
Carbondale
457-2721

SHOP SMART AT
Carbondale: Murphy'sboro
Carmi: Fairfield Centralia
Mt. Vernon

RESTAURANT
The Quay Street Seafood
206 S. WALL 457-4510

Everyday Lunch & Dinner Buffet \$3.95
Friday-SEAFOOD BUFFET \$9.95

- Snow Crab Legs
- Hot-Cold Broiled Shrimp
- Crab meat (Includes 6 seafood dishes and Salad Bar)
- Clams
- Bread Shrimp
- Cod
- Scallops

Saturday and Sunday - All Day Buffet \$3.95
*Bring in this ad for a FREE Soft drink 457-4510

SIX FLAGS

Come Brave The "Tidal Wave"

Saturday July 27, 1991
Deadline to register is Today at 4 p.m.
Round trip transportation only \$7!!!
Bus Leaves Carbondale at 8 a.m.
Bus leaves the Park at 7 p.m.

Discount Coupons are available!

Children under 12 must be accompanied by an adult. Come join SPC and Family Housing Programming at Six Flags St. Louis. Call SPC 536-3393 for information

Park Tickets not included in cost of trip.

HOT?

Checkers has 15,000 sq. ft. of air conditioned comfort where you and your friends have room to dance, play pool, or just sit back and relax...

THIS WEEKEND FEATURES

The two hottest D.J.'s in Southern Illinois, the coldest beer in Carbondale, and the coolest prices to be found anywhere!!

FRIDAY & SATURDAY

Bud btls.....95¢
Old Style btls.....75¢
Miller Lite btls.....95¢
Amaretto sours & Blue Devils.....\$1.25

SEE YA!

457-2259 760 E. Grand

Newswrap

world/nation

Bush calls on Palestinians to be flexible for peace plan

WASHINGTON (UPI) — While Israel weighs acceptance of a U.S.-brokered Middle East peace plan, President Bush called on Palestinians Wednesday to show flexibility in accepting terms for a peace conference. In a speech to a convention of Antiochian Orthodox Christians, Bush made his own pledge before the enthusiastic crowd to go "the extra distance" for peace in the troubled region and called on all parties to seize the "historic opportunity" now at hand. Though not mentioning specifics, Bush appeared to be publicly pressing the Palestinians for flexibility on the question of who will represent them at the peace table.

Croatian soldiers killed in battle with federal troops

BELGRADE, Yugoslavia (UPI) — At least six Croatian militiamen died and 15 others were wounded in a brief battle Thursday with armor-backed federal troops guarding a bridge linking the rival republics of Croatia and Serbia, the military and news reports said. Three federal soldiers were wounded in a separate incident. Only hours earlier on Wednesday night, a federal army sergeant died as he and a colleague fought with members of the Croatian National Guard, two of whom were also killed and one injured, near a military base in the strife-torn eastern Croatian region of Slavonija, the army said.

Botha refuses to apologize for secret funding

JOHANNESBURG, South Africa (UPI) — South Africa's foreign minister refused Thursday to apologize for secretly funding one of the country's leading black organizations, or to concede that it might have contributed to black-on-black violence, and said he will not quit. And for the first time he acknowledged that the government quietly provided up to \$40 million to seven political parties in Namibia's first free elections in 1989. R.F. Botha said he gave \$90,000 to the mainly Zulu Inkatha Freedom Party because he wanted to fight international sanctions against South Africa and a rally would show there are blacks against sanctions.

Welesa threatens force to stop mass striking

WARSAW, Poland (UPI) — President Lech Walesa, founder of the labor movement that helped topple communism in Eastern Europe, said in an interview published Thursday he would not hesitate to use force against mass strikes that jeopardized economic reforms. "If I were facing anarchy, mass strikes, if the situation was dramatic, I would have to rely on force to save the country," Walesa told the independent newspaper Sztandar Mlodych. The statement was surprising in view of Walesa's background as leader for a decade of the Solidarity union, which advocated peaceful opposition to communist rule in Poland.

Shuttle test reveals hydrogen fuel loss by engine

CAPE CANAVERAL, Fla. (UPI) — Engineers studied test data Thursday to find out what caused a major space shuttle engine failure during a test firing in Mississippi Wednesday and whether the mishap will have an impact on the shuttle Atlantis's launch next week. The test firing, conducted Wednesday afternoon on test stand A-1 at the Stennis Space Center, ended abruptly about four seconds into a planned 513-second run. The shutdown occurred after the engine suffered a loss of hydrogen fuel, sources said, indicating possible trouble with the power plant's fuel pump. The engine experienced an oxygen-rich shutdown.

Cash foreign aid grants replaced by U.S. goods

WASHINGTON (UPI) — The Senate voted Thursday to begin a shift in the foreign aid program, replacing cash grants to foreign countries with major projects using American goods in an effort to spur the U.S. economy and create jobs. The proposed change, strongly opposed by the administration, would mark a dramatic change in policy by "beginning to use the foreign aid program to help ourselves as well as others." The Senate approved the policy shift 99-0 as an amendment to the two-year \$28 billion foreign aid package, already seriously jeopardized by threats of a veto and major fights.

Accuracy Desk

If readers spot an error in a news article, they can contact the Daily Egyptian Accuracy Desk at 536-3311, extension 233 or 228.

Daily Egyptian
Southern Illinois University at Carbondale

Student Editor: Jerianne Kimmel
Associate Student Editor: Brian Gross
News Editor: Tony Mancuso
Editorial Page Editor: Natalie Boehme

Entertainment Editor: Annette Holder
Sports Editor: Jackie Spinner
Photo Editor: Fred Hale
Student Ad Manager: Lisa Wiemkan

Acting Managing Editor: Wanda Brandon
Business Manager: Cathy Hagler
Display Ad Manager: Sherri Allen
Acting Classified Ad Manager: Janet Hines
Production Manager: Gary Buckles
Account Tech III: Kay Lawrence
Microcomputer Specialist: Kelly Thomas

ICPA
Member of the Illinois College Press Association and client of United Press International

Daily Egyptian (USPS 169220) published daily in the Journalism and Egyptian Laboratory Monday through Friday during the regular semester and Tuesday through Friday during the summer term by Southern Illinois University, Communications Building, Carbondale, Ill.

Editorial and business offices located in Communications Building, North Wing, Phone (618)-536-3311, Walter B. Jaehning, fiscal officer.

Subscription rates are \$55 a year or \$35 for six months within the United States and \$140 a year or \$90 for six months in all foreign countries.

Postmaster: Send all changes of address to Daily Egyptian, Southern Illinois University, Carbondale, Ill., 62901. Second Class Postage paid at Carbondale, Ill.

Ad Good Thru 8/4/91

Childhood pastime makes successful business

By Jennifer Kuller
Staff Writer

A favorite childhood pastime has turned into a busy business for three Murphysboro men, keeping them racing toward success.

Racer's Edge, located at 1510 Walnut Street in Murphysboro, is a slot car race track owned by Randy Burke, Kie Dallas and Steve Balsano.

Burke, Dallas and Balsano, who have known each other since they were young, made the decision to start the five-week old business when the slot car races Burke held in his garage got too big, Burke said.

"It was just getting too crowded and the neighbors were starting to complain about the noise," Burke said.

But the men haven't had as much time as they expected to run their own slot cars. The business has kept them racing around to keep their customers satisfied.

Business has been so good that the guys had to work out a schedule just to race their cars, Burke said.

"Every third weekend, one of us gets to race," he said.

Another incentive for the men to start the business was the increased popularity of slot car racing during the last several years, Burke said.

"People were doing it years ago, and then suddenly about 1989

interest picked up again," Burke said.

Burke said one reason for the revived interest in slot car racing was the better quality and affordability of the cars.

Each car has an electric motor and a guide flag on the front that fits into a slot on a battery powered track. The power and brakes are regulated by the individual who "drives" the car with a controller, Burke said.

Most of the cars sold by Racer's Edge can attain speeds of 40 to 50 mph. Some of the customized models, which Burke and his partners build, have reached 100 mph.

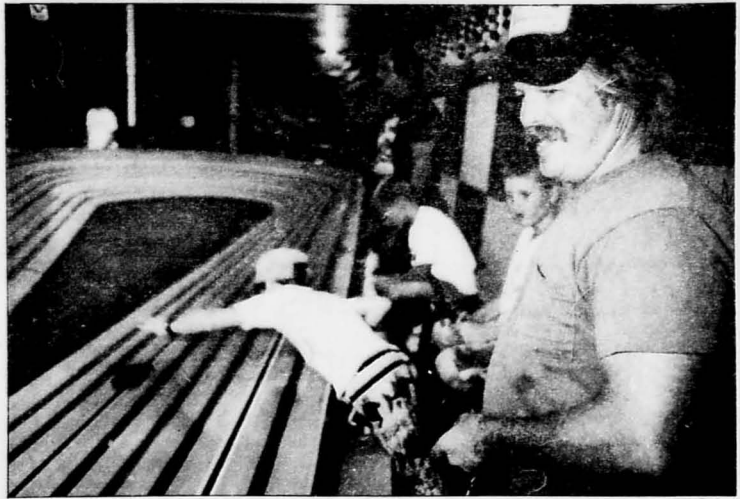
Burke also credits the renewed popularity of the hobby to the fact that most of his customers are men around age 35 who played with slot cars when they were young.

"Back then, most parents didn't understand why their kid wanted a slot car. They thought it was just a toy and wouldn't buy them one," Burke said.

Now, most of those kids have kids of their own and understand when their son or daughter wants a car, Burke said.

"Lots of times, the dads buy their kid one and then buy one for themselves," he said.

Burke said he and the other owners, who don't allow smoking or vulgar language on the premises, want to keep the establishment as



Staff Photo by Fred Hale

Bobby Bower of Murphysboro races his slot car at Racer's Edge in Murphysboro.

family-oriented as possible.

A lot of their customers are father and son, Burke said. Sometimes entire families come to participate in or watch the fun, he said.

The races every Saturday night

are broken into junior and senior categories. The junior class is for participants age 15 and under, and the senior class is for those over 15.

All three men, who have other jobs during the day, said they aren't worried about making a living with

the business.

"We get ribbed a lot about playing with toys up here. But it's a pretty neat hobby. We just want everyone to have a good time," said Burke.

IPS to sponsor leadership program

By John Reeves
Staff Writer

International women at SIUC will now be able to meet successful women entrepreneurs in Carbondale, Chicago and Washington, D.C.

International Programs and Services will sponsor a leadership training program for international women in small business development and management, said Naseem Ahmed IPS research project specialist.

The National Association of International Educators in Washington, D.C. will fund the program.

The program has three phases, said IPS foreign student adviser I'ane Wissinger. The first phase is a weekend work-shop in October, the second, a trip to Chicago and the third, a trip to Washington, D.C., she said.

The workshop will provide general concepts in management, marketing and how to own and operate a small business, Wissinger said.

After the workshop, students will take

field visits to successfully owned and operated businesses, Ahmed said. The visits will include organizations such as the Illinois Women's Business Council, the Small Business Administration and the Illinois Business Center in Chicago, she said.

In November, participants will attend the Association of Women in Development's International Forum "Learning Together/Working Together: A North-South Dialogue," in Washington, D.C.

Each participant will be paired with a professional mentor from Carbondale or Marion who will provide on-going contact, even when the student returns to her home country, Ahmed said.

"The local mentor and the contacts made in Chicago and Washington will provide global networking opportunities," she said.

The training program for women is the first of its kind at SIUC, Ahmed said, but if successful, IPS hopes to continue it.

International women interested in the program may phone Ahmed at 453-7670.

Minority high school students gain early college experience

By Omonopee O. Whitfield
Staff Writer

Thirty-seven minority high school students are having the opportunity to experience college life this week.

Linda Helstern, public information specialist for the College of Engineering and Allied Technology, said this year's enrollment in Introduction to Engineering for minority students is at an all-time high.

Both Helstern and Minority Engineering Program Director Johnny Patterson said in addition to having more students participate, this year also marks the first time students from across the country were invited to participate in the weeklong event.

"We did a lot of advertising in national magazines," Patterson said.

Patterson said the college of engineering received 271 applications for admission to the program, and invited 50 students to participate. Thirty seven of the 50 participated, Patterson said.

Helstern said she is pleased with this year's

recruitment and with the schedule of events for the program. Students will be attending classes on robotics, computer graphics and other engineering-related subjects and are scheduled to participate in extra-curricular activities, including touring a local coal mine.

Program participant Michelle Strickland, a high school senior from Chicago, said the program has piqued her interest in attending SIUC. She said in addition to enjoying the scenery and what she called the nice atmosphere of the campus, she also enjoyed taking classes during this summer's program.

"The classes were well-rounded," Strickland said. "Not only were there science and engineering courses, but we also took a class in business."

Nathan Williams, a high school junior from Chicago, said he was excited about the minority engineering summer program and was considering pursuing a college career at SIUC.

The program, which began July 22, will convene this evening at 6 p.m. with a banquet in the Old Main Room.

ESTABLISHED 1980
CARBONDALE, ILL. 62901
"A COLLEGE CAREER"
"WORLD'S GREATEST SANDWICH SHOP"
CARBONDALE, ILL. 62901
TEL: 524-1111

THE ORIGINAL JIMMY JOHN'S

WORLD'S GREATEST SANDWICH SHOP

SIX GOURMET SUBS
ALL MEAT GOURMET SUBS ARE A FULL 1/2 POUND OF FRESH BAKED BREAD, FRESH MEATS, AND THE BEST CHEESE WE CAN GET.

1 THE PEE SAUSAGE, SPICED VICHINA SAUCE AND PRODUCE. (SEE LISTING FOR DETAILS)
2 BIG JOHN BEEF, CHEDDAR, KETCHUP, MUSTARD, LETTUCE, AND TOMATO.
3 SORRY CHARLIE CHICKEN, BUNNY, MAYO, KETCHUP, MUSTARD, LETTUCE, TOMATO, PICKLED ONIONS, AND SPICY SAUCE.
4 UNCLE JOHN PEE, SAUSAGE, MUSTARD, KETCHUP, MUSTARD, LETTUCE, TOMATO, PICKLED ONIONS, AND SPICY SAUCE.
5 VITO THE ORIGINAL, ITALIAN SAUCE WITH CHEDDAR, PRODUCE, LETTUCE, KETCHUP, MUSTARD, AND A BUNCH OF GREAT ITALIAN SAUCE.
6 VEGETARIAN VEGETARIAN, CHEDDAR, PRODUCE, KETCHUP, MUSTARD, LETTUCE, TOMATO, PICKLED ONIONS, AND SPICY SAUCE.

WORLD'S GREATEST SANDWICH SHOP

PLAIN SLIM JIMS
SAUSAGE, SPICED VICHINA SAUCE, BUNNY, MAYO, KETCHUP, MUSTARD, LETTUCE, TOMATO, PICKLED ONIONS, AND SPICY SAUCE.
SLIM'S HAM & CHEESE
SLIM'S SAUSAGE & KETCHUP
SLIM'S CALAMARI
SLIM'S SAUSAGE CARBONARA
SLIM'S SAUSAGE PRODUCE

SIX GIANT SUBS

7 GOURMET SMOKED HAM CLUB A FULL 1/2 POUND OF SMOKED HAM, SPICED VICHINA SAUCE, BUNNY, MAYO, KETCHUP, MUSTARD, LETTUCE, TOMATO, PICKLED ONIONS, AND SPICY SAUCE.
8 BILLY CLUB SAUSAGE, SPICED VICHINA SAUCE, BUNNY, MAYO, KETCHUP, MUSTARD, LETTUCE, TOMATO, PICKLED ONIONS, AND SPICY SAUCE.
9 ITALIAN NIGHT CLUB REAL GENOVA SALAMI, ITALIAN SAUCE, SPICED VICHINA SAUCE, BUNNY, MAYO, KETCHUP, MUSTARD, LETTUCE, TOMATO, PICKLED ONIONS, AND SPICY SAUCE.
10 HUNTERS CLUB A FULL 1/2 POUND OF SAUSAGE, SPICED VICHINA SAUCE, BUNNY, MAYO, KETCHUP, MUSTARD, LETTUCE, TOMATO, PICKLED ONIONS, AND SPICY SAUCE.
11 REAL CLUB REAL GENOVA SALAMI, ITALIAN SAUCE, SPICED VICHINA SAUCE, BUNNY, MAYO, KETCHUP, MUSTARD, LETTUCE, TOMATO, PICKLED ONIONS, AND SPICY SAUCE.
12 THE BEACH CLUB SAUSAGE, SPICED VICHINA SAUCE, BUNNY, MAYO, KETCHUP, MUSTARD, LETTUCE, TOMATO, PICKLED ONIONS, AND SPICY SAUCE.

WE DELIVER - 549-3334
Serving Hours - MON-FRI 11 AM - 2 PM & 5 PM - 10 PM
WEDNES 11 AM - 3 AM CLOSED ON SUNDAYS

HAVING A PARTY?GIVE US 24 HOURS AND WE'LL MAKE YOU A 2, 4, OR 6 FOOT SUB (SEE MANAGER)

YOUR MOM WANTS YOU TO EAT AT JIMMY JOHN'S!

Stevenson Arms
for all your housing needs:

Housing Checklist

- SIU Approved Off Campus Housing
- Excellent Food Service (Sunday evening meal included)
- Cable T.V. and HBO
- Mini Fridge in each room
- Plush Study & T.V. Lounge
- Private bath per Suite
- Friendly Staff
- Just steps away from campus

Stop by Stevenson Arms

600 W. Mill
549-1352

Discover Birkenstock

Step into Birkenstock footwear, and find a remarkable blend of comfort and style. Contoured footbeds provide cushioning and support, while your feet remain free to move naturally. You'll find colors that range from basic to brilliant.

Birkenstock
SHAWNEE TRAILS
222 W. Freeman
CAMPUS SHOPPING CENTER
529-2313

VISA MasterCard

Opinion & Commentary

Daily Egyptian

Southern Illinois University at Carbondale

Daily Egyptian Editorial Board

Student Editor-in-chief: Jerianne Kimmel
 Editorial Page Editor: Natalie Boehme
 News Staff Representative: Leslie Colp
 Acting Managing Editor: Wanda Brandon
 Faculty Representative: Walter Jaehng

Overflowing landfills threaten planet earth

SOUTHERN ILLINOIS has beautiful rolling hills, green trees and prosperous crops, but in a matter of years the hills, trees and crops could be a mound of trash.

Numerous landfills are overflowing and closing every year. In Illinois alone, 26 counties do not have operating landfills. Southern Illinois already has eight counties in which the landfills have been closed.

If people continue to dispose of trash at current rates, 39 of the state's 102 counties are projected to be without operating landfills by 1993. That is less than two years away. Not much time to try and reverse a problem that has been growing for more than 20 years.

When a landfill is closed, the trash has to be disposed of in another county. This costs more money for taxpayers and creates the same overflow problem in that county.

It is not too late to correct this problem. Individual contributions do make a difference.

PEOPLE CAN HELP in several easy ways.

First, choose recycled and recyclable packaging and products. Choose reusable products instead of disposable ones.

Finding new uses for throwaway items is not only showing a conscientious effort to save the environment, but can show talent and ingenuity as well. It may also save money by making items that are usually purchased, such as birdfeeders or plant pots out of milk jugs.

Recycling at home and at work can be profitable. Who couldn't use a few extra dollars a week? Many recycling facilities pay money for aluminum cans, scrap iron and glass.

Lastly, leave grass clippings on the lawn and compost other yard waste. It could save a bundle on fertilizer.

For every pound of trash that is recycled, a pound less is thrown into Illinois landfills.

Of course recycling is not the only answer to the problem. Cutting down on the amount of trash thrown away also is beneficial.

Try selecting products with minimal packaging and buying in bulk quantities. That way when the trash is thrown out, it may only be 5 pounds instead of 10.

A LOT OF EXCUSES are given for people not to recycle. The most common being, "I don't have time." Well places like Country Fair and Wal-Mart have made that excuse virtually obsolete.

Those two stores have placed recycling bins in their parking lots. So the next time you have time to go shopping, you have time to recycle.

The majority of local grocery stores also have a drop off inside the store to recycle plastic bags. Reusable shopping bags are available for purchase as well.

What could be easier? Obviously some people would not recycle even if the trash was picked up from their front door. If everyone had that attitude, we soon would be living on a big trash heap called earth instead of a beautiful, green and thriving planet.

THE WAY WE WERE



Letters

Center not students'

I made a quite astounding discovery on the evening of Thursday, July 18. The Student Center doesn't actually belong to the students at all. The SIU Student Center is completely owned by the faculty and staff who run it as well as Marriott and McDonalds.

I made this discovery when I ordered a pizza from a local business and requested they deliver it to the third floor where a friend and I were working. Upon arriving in the Student Center, the delivery person was accosted by an overzealous building manager. This building manager then followed the delivery person upstairs and informed us of our crime. We were not allowed to eat food in the Student Center that wasn't purchased in the Student Center (that is, from Marriott or McDonalds). The building manager promptly ordered us to eat the pizza outside.

Due to some asinine contract the administrators of our fine University agreed upon, we as

students—the people who actually pay for the Student Center through our fees and patronage—cannot eat food in the Student Center that is purchased from businesses outside of the Student Center.

This contract is totally unacceptable. Anyone can carry food in or order it for delivery to any other building on campus, except the Student Center. Marriott and McDonalds have a definite monopoly on the food services offered on this campus.

Local businesses have recently argued against the use of the debit card system on campus. Isn't this type of closed contract doing the same thing? It is not allowing Carbondale businesses ready access to an important, high traffic area at SIU.

It certainly doesn't allow working students the freedom of choice as to what they want to eat, when they want to eat it.—Terry Fisher, junior, advanced technical studies and Alex Schneidinger, senior, mathematics.

Woods add to campus beauty

A few days ago, the DE reported the argument about the resumption of Thompson Woods' lighting and revealed that Mr. Thompson sold the woods to SIU with the stipulation the woods should remain in its natural state. I was really touched by Mr. Thompson's foresightedness and love of nature.

Being a woods' lover, I appreciate being able to walk in the woods between the technical building and the library. I know the importance of the woods. Perhaps it is one of the biggest magnets to attract the students and faculty

here. So, beyond the argument of lighting resumption, we are concerned more about the management of the woods. Do the woods remain in their original state as Mr. Thompson stipulated? How about the maintenance work? Perhaps we should perform a study relating the ecological or the death rate of the woods compared to the growth rate of squirrels.

In brief, I just want to express my love of Thompson Woods!—Long Lin, mechanical engineering and energy processes.

Film deals with reality

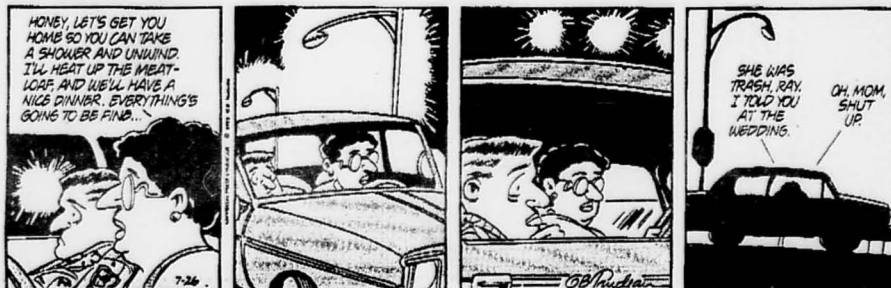
Once again it seems staff writer Allan Towell has gotten the facts wrong. The article written about the movie "Boyz n the Hood" is grossly inaccurate. The movie is not sexist. The theme through the film is life, life and history of the black race.

It all goes back to the system of slavery in which the black male was systematically used as a stud and the black female for the purposes of breeding or for the gratification of the white male. The only source of family continuity was through the black female. This pattern, together with continued post-slavery relegation of the black male to subservient status, has made the female the dominant person in the black family.

Psychologically, the black male could not support his normal desire for dominance. For the most part he was not allowed to be a consistent wage earner; he could not present himself to his wife and children as a person who had the opportunity to compete successfully. Thus the black man's doubts concerning his place was reinforced.

The movie attempts to shed some light on a dark situation, so the next time you critique an ethnic movie know what you're talking about. The black woman has been required to hold the family together and help rebuild the black man not by choice but by necessity.—William C. White II, president, minorities in education.

Doonesbury



by Garry Trudeau

How to submit a letter to the editor.

WASTE, from Page 1

any hazardous waste currently, and Guyon said the hazardous waste heading is some what vague.

"Draino is considered a hazardous chemical," he said. In complying with guidelines for safe chemical use and storage, Guyon said classroom activities will suffer.

"Before long we'll be teaching chemistry by video tape," he said.

Guyon said the guidelines for chemical use and the citation for proper disposal are often contrasting.

The Life Science II incinerator was used for burning animal carcasses before it was shut down. In order to operate the incinerator it must be hand scrubbed on the inside with a wire brush using cleaners and water, he said.

However, the materials used for cleaning are considered hazardous and must be collected and stored after use, he said.

James Tyrrell, SIUC chemistry professor, said the University is obliged to follow state and federal regulations and really doesn't have a choice in the matter.

The stock piled materials resulted from years of research and will be the main problem when it comes to disposing of hazardous waste.

"We're between a rock and a hard place," Tyrrell said. "We are instituting policies to keep us from ever getting into this mess again."

A waste reduction program is in effect for classroom exercises that has students using chemicals on a micro scale, he said.

Through this program the University reduces the amount of chemicals it must purchase, reduces the number of students working with waste and drastically reduces waste material.

But the plans will cost SIUC millions of dollars, money that is not going to come from the state.

"The big problem is the cost," Tyrrell said. "A very substantial amount of money will have to come out of the University's existing budget."

Tyrrell said having the state request the University to do something and then not providing funds is becoming a common occurrence.

"The philosophy of the last few years has been to do more with less," he said.

Gary Steele, environmental protection specialist for the IEPA, said the organization has been working with the University to remedy the situation, but it cannot give special attention to SIUC.

"Unfortunately we have to treat the University as any other hazardous waste generator," Steele said. The difference between SIUC and a typical industry is in the types and amount of waste generated.

"With a manufacturing facility you're dealing with maybe 10 types of waste, but at the University it's probably 1,000 different types," Steele said.

Also industries produce waste in hundreds of gallons, but SIUC it would be individual pints, quarts and gallons, he said.

But the situation could be worse, he said.

"You're not going to get any gold stars this week, but you're not the worst kid on the block," he said.

ROAD, from Page 1

would go south of the golf course and Koppers Industries Inc.

Jim Moll, an engineer with Hanson Engineers, said many residents did not like the placement of the intersection near Reeds Station Road because it was too far away from the city and would not

attract visitors into Carbondale.

Another intersection closer to the city was proposed but preliminary estimates show it could cost about \$3 million more than the original proposal.

No estimates for complete routes are available.

Coombe said if everything goes as planned, enough money is available and there is a decision to build, construction could begin by 1996 or 1997.

The advisory group will meet later in the year to further discuss the remaining options.

SOVIET, from Page 1

themselves to the party strategic line and violate directly its rules will not damage the party but even will strengthen it," he said.

"I think we should pose the question in the following way: Our party can act only on the basis of the development of the policies outlined by the Congress of the

CPSU and of the acceptance of its proposed new program," he said.

"Those who adhere to different views are free in their choice (to leave)," he said.

The plenum assembled with analysts predicting a split between conservatives attempting to go back to an economy of central planning and

liberals supported by Gorbachev seeking a mixed economy that will include some private property.

Gorbachev began the plenum by proposing a party platform that renews the Communist commitment to socialism but also supports democratic reforms, decentralized power and a mixed economy.

IRAQ, from Page 1

"The provision of lists itself does not satisfy the requirements," Popadiuk said. "There is a condition there for inspections and we're looking for those inspections to confirm what is on the lists."

In a speech Thursday, President Bush defended the U.S.-led invasion of Iraq and defeat of Saddam

Hussein. "Who can doubt this now, knowing as we do just how close Saddam Hussein was to possessing nuclear weapons and the means to deliver them?" Bush asked a group of Antiochian Orthodox Christians.

He renewed his call for Iraqis to force Saddam from power. "I'll repeat it today: We have no quarrel

with the people of Iraq but Iraq will not realize its potential as a nation ... so long as Saddam stays in power."

U.S. and allied officials have gone so far as to threaten military action in the event Saddam does not provide a complete accounting of those programs.

CARE, from Page 1

The fire codes for infant and toddler programs aren't any different than the requirements for pre-school and school-age children, Walton said. But a day-care for pre-school and school-age children can be operated without a license.

Rainbow's End now cares for pre-school and school-age children in the Recreation Center. It is not a licensed operation in the Rec Center because the building doesn't meet the fire codes, Walton said.

Edwin Barea, graduate student in psychology, has an infant in the Rainbow's End program. The crisis

is not so much in terms of money, but in the lack of day-care in Carbondale, Barea said.

Bill Hall, student trustee, said a temporary solution must be found.

"We need to come up with the best facility we can by Aug. 2," he said. "We need to find temporary care, even if we can't be licensed."

Guyon said he didn't think that was an option, but would be willing to look into it.

Barea asked if it would be possible for Rainbow's End staff members who will be laid off when the program closes to care for children

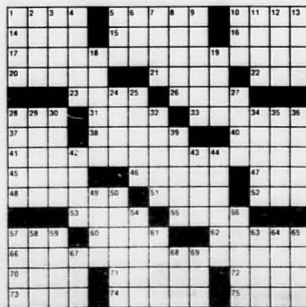
in the parents' homes.

Guyon said the possibility would be considered.

The pre-school and school-age program will continue to operate in the Rec Center during fall semester, but at reduced capacity, because one of the two rooms currently being using will be needed for classes. During fall semester the program normally enrolls 51 pre-school and 10 school-age children, who come after school. In the Rec Center, the program will be able to accept 30 pre-schoolers. School-age capacity will remain the same.

Today's Puzzle

- ACROSS
- 1 Many years
- 2 Cheap food
- 10 Competitor
- 14 Backstop's glove
- 15 Senseless
- 16 Amphibian
- 17 Insignificant
- 20 Ringo
- 21 Drag
- 22 Craving
- 23 Butte run
- 25 Profiter
- 26 temporarily
- 28 -reel
- 31 Picking herb
- 32 Land measure
- 34 Tactum
- 37 Before
- 38 Arch: dividing
- 40 Urge
- 41 Be obvious
- 45 USA word: abbr.
- 46 -- a fiddle
- 47 Alca of TV
- 48 Paving stuff
- 51 Retail
- 52 Poetic: abbr.
- 53 I think --
- 55 Great Barrier --
- 57 Firm
- 60 Solo
- 62 Graceland's
- 63 Claim to fame
- 66 Drawing a --
- 67 wrong
- 68 conclusion
- 70 List: ender
- 71 Ghoulish
- 72 Land measure
- 73 Not ally
- 74 Shakerspearan
- 75 sprite
- 75 Abound
- DOWN
- 1 OT prophet
- 2 Present
- 3 Sicilian spewer
- 4 Tempest
- 5 Pedro's uncle
- 6 Ms. Jiljan
- 7 Ready money
- 8 Tatum or Ryan
- 9 Literary spin-off
- 10 Consumed
- 11 Disease
- 12 Chantilly
- 13 product
- 13 Paradise
- 15 Blockkeeping
- 16 art
- 17 Arm bone
- 18 Sound of reed
- 19 -- a bucket
- 20 Sluggish
- 21 Sordid old style
- 25 Redolence
- 26 Seamstress
- 32 Boxer Joe
- 34 Court drama
- 35 Cheat
- 36 Part of EAP
- 39 Playful mammal
- 42 La Douce
- 43 Vendition
- 44 In the arms of
- 46 Morphous
- 49 Jai
- 50 Eye part
- 54 Detroit
- 56 Parade vehicle
- 57 Verily
- 58 Arab bread
- 59 Romanov ruler
- 61 In bell-town
- 63 -- versa
- 64 Concerning
- 65 Check
- 67 Curbing
- 68 Go quickly
- 69 Snigger's catch



Today's puzzle answers are on page 11.

AMERICANS WITH DISABILITIES ACT CELEBRATION

JULY 26, 1991
4-8 PM

TURLEY PARK

Come and celebrate the first anniversary of the signing of the most significant civil rights bill in 25 years!

Sponsored by: The Southern Illinois Center for Independent Living.



BITTER'S DIVE & SCUBA SHOP

SEE US FOR ALL YOUR SCUBA DIVING NEEDS!
AIR FILLS, MASKS, SNORKELS
FINS, WETSUITS, & ACCESSORIES

CARBONDALE
1 MILE EAST OF TOWN
"SWEET'S CORNER"
457-2729

GET SCUBA CERTIFIED AT BITTERS.
WEEKEND CLASSES STARTING NOW!
WE RENT SCUBA GEAR TOO!

1991 Summer Playhouse



Drood

by Rupert Holmes
July 19 - 21, 25 - 28

A musical based on Charles Dickens' uncompleted novel, *The Mystery of Edwin Drood*. Edwin Drood and a host of other characters provide a mysterious tale that's sure to keep audiences guessing. That is until the end, when the play is thrown open to the audience. Only the audience will determine the conclusion.

Playwright's Workshop-Laboratory Theater

General Admission only \$3*

The laboratory theater is only a 90 seat theater, remember to get your tickets early!

July 22, 29
Don't Bury Me Deep by Denise Kay Dillard
A farical look at America's health care system.

July 23, 30

Bensonhurst by Victoria Rosa

A dramatization of a vicious racial attack on several black youths in Bensonhurst, an Italian-American section of Brooklyn, New York.

July 24, 31

Prison of Our Own Desires by John Reaves

A wealthy Russian prince wants to rescue the true love of his youth from an unmerited Siberian exile.

Box Office: 453-3001 Monday - Friday 10:30 a.m. - 4:30 p.m.
And 1 1/2 hours before each performance



McLeod Theater

South Entrance of the Communications Building



SOUTHERN ILLINOIS UNIVERSITY AT CARBONDALE

KIDS LOVE

The Pasta House Company
Great Italian Restaurants



MR. MEATBALL'S FAVORITES

- SALAD .99
- SPAGHETTI 1.95
- SPAGHETTI & MEATBALLS 2.25
- RAVIOLI 1.95
- TOASTED RAVIOLI (6 PIECES) 1.95
- PIZZA 2.55
- (9" SAUSAGE OR HAMBURGER)

For Kids with a taste for art great Italian works of art

All above items include kids beverage with free refills

Free Balloons!!

Crayons with Placemats for drawing!!

FOR CHILDREN 12 YRS AND UNDER

NOT AVAILABLE ON CARRYOUTS

- University Mall Carbondale, IL 457-5545
- Kentucky Oaks Mall Paducah, KY 441-7700
- West Park Mall Cape Girardeau, MO 335-4450

Regarding the film on Henry, it's funny, uplifting, sensitive

By Allan Towell
Staff Writer

Film Review

"Regarding Henry," starring Harrison Ford, is a lighthearted, sentimental tear-jerker that will make the audience leave the theater wanting to be a little nicer to one another.

Ford plays Henry Turner, a highly successful but somewhat ruthless Manhattan attorney.

As the film opens, Turner is just winning a case in which he is defending a hospital that is being sued by a patient for negligence.

Of course, he wins the case for the hospital and the wronged patient gets nothing.

A few minutes into the film, Turner is shot in the head in a convenience store robbery, and the rest of the film deals with the physical and social rehabilitation of this once powerful, but now helpless man.

At this point it seems like the audience might be in for a tedious, painful two hours, watching Turner learn to walk, speak, read and generally function all over again. Fortunately, the film is not tedious.

Director Mike Nichols handles the subject in a refreshing, humorous way that results in a film that is often witty and touching without being overly sappy.

Turner's actual physical rehabilitation is skipped through quickly, leaving the majority of the film to deal with his reintegration into his family.

After he is shot, he forgets almost everything about his past, including his wife and daughter. His injuries have left him unable to work as a lawyer, but he does become a much nicer guy.

Because most of his memory and personality were lost, so are the characteristics that made him a selfish, ruthless person.

As he makes his recovery, he begins to uncover some disturbing facts about his previous life, including his crooked legal cases and his broken marriage.

The predictable ending does not take away from this uplifting film. The script is often simultaneously

funny and sad, and the plot is optimistic but believable.

Harrison Ford turns in his usual professional performance, and does a convincing job in most of the scenes.

Bill Nunn, a regular supporting actor in Spike Lee's films, is enjoyable as Henry Turner's good-humored physical therapist.

"Regarding Henry" is rated PG-13 and is playing at Fox Eastgate Theaters.

Harlem building collapse traps man, construction workers escape rubble


NEW YORK (UPI) — A six-story building collapsed at a busy intersection in Harlem Thursday, trapping one man beneath the rubble.

As rescue workers tried to free the trapped man, elevated train service near the building was suspended to keep vibrations from

passing trains from knocking down any more of the building. Two construction workers scrambled from the rubble of the building at Broadway and 125th Street shortly after the 11:23 a.m. collapse, fire officials reported. Officials said only three people were in the building when floors collapsed.

Walt Disney's CLASSIC

Peter Pan



SHOWING
Tonight
5:30 and 7:30
Saturday
2:00 and 4:00
Admission \$1.00
Student Center Auditorium
Refreshments Available

★ ★ ★ ★ ★

Egyptian Drive-In

Rt. 148 Next to Wmson. Co. Airport

WIN \$400
In Sunday Night Drawing
Gate Opens 7:30
First Show 8:30
Adults \$2.50
Friday • Saturday • Sunday
JULY 26 • 27 • 28

1. Terminator 2 (R)
2. Hudson Hawk (R)

★ ★ ★ ★ ★ 988-8116 ★ ★ ★ ★ ★

ALL SEATS \$1.00

LIBERTY THEATRE

Murphysboro - 684-6022

PROBLEM CHILD 2

DAILY 7:00 9:00 SAT & SUN MATINEE 2:00

ALL SEATS \$1.00

SALUKI CINEMA

E. Grand Ave. • 549-6622

BACKDRAFT



Silently behind a door, it waits.

DAILY 7:00 ONLY!
SAT & SUN MATINEE 2:00

Dying Young



Julia Roberts
Campbell Scott

DAILY 7:15 9:30
SAT & SUN MATINEE 2:15

amc Entertainment Friday 7/26

UNIVERSITY PLACE 8 457-6757

Terminator 2	1:40 (4:30 TWL) 7:20 10:10	(R)
Robin Hood	1:50 (4:40 TWL) 7:30 10:10	(PG-13)
Life Stinks	2:30 (5:20 TWL) 7:00 9:30 11:30	(PG-13)
Naked Gun 2 1/2	2:40 (5:20 TWL) 7:50 9:30 11:45	(PG-13)
Neighbors	2:10 (5:10 TWL) 7:50 10:00 12:00	(R)
Boyz n The Hood	2:30 (5:40 TWL) 8:00 10:20	(R)
Point Break	2:30 (4:40 TWL) 7:10 9:40 12:00	(R)
WarGames	2:40 (5:40 TWL) 7:40 9:50 11:45	(R)

STEREO \$3.00
South Illinois St. • 457-6100
All Shows Before 6 pm

BILLY CRYSTAL CITY SLICKERS

DAILY 2:30 4:45 7:00 9:15

Can a big kid bring out the child in a little jerk?

DUTCH

DAILY 2:15 4:45 7:00 9:15

Bill & Ted's Bogus Journey IT'S A TRIP.

Bogus Journey

DAILY 1:15 3:15 5:15 7:15 9:15

STEREO \$3.00
Eastgate Mall • 457-5685
All Shows Before 6 pm

REGARDING HENRY

HARRISON FORD

DAILY 2:15 4:45 7:00 9:15

Walt Disney's CLASSIC

Another You

WILDER PRIOR

DAILY 1:30 3:30 5:30 7:30 9:30

Walt Disney's CLASSIC

101 DALMATIANS

DAILY 1:00 3:00 5:00 7:00 8:45

Shanghai

Chinese Thai Indonesia Cuisines

GRADUATION PARTIES



- FREE CAKE FOR PARTY OF 5 OR MORE!
- DINNER MENU ONLY
- RESERVATIONS RECOMMENDED

Sat. Aug. 3rd
Open 11:00 - 2:30

Business Hours:
Lunch: Mon.-Sat. 11 a.m.-2:30 p.m.
Dinner: Mon.-Thur. 4:30-9:30 p.m.
Fri. & Sat. 4:30 p.m.-10:30 p.m.

1110 LOCUST STREET
MURPHYSBORO, ILL. 62966
(618) 687-2648

MOVING BOXES



"ONE LOW PRICE ALL SUMMER"

Book Box, small	95¢
Medium Box	1.49
Large Box	1.90
Dish Barrel	2.95
Wardrobe	7.95
Rope	2.95
Tape 2"x 55 yds.	2.15
Master Lock	5.95

E-Z & RYDER TRUCK RENTAL

1817 W. Sycamore, C/Dale, IL
Ph: 549-4922 or 457-4127

RESERVE YOUR TRUCK NOW, FOR JULY & AUG.






Under New Management!

GATSBY'S

608 S. Illinois Ave.

ALL WEEKEND

50¢ DRAFTS

\$3.00 PITCHERS

FRIDAY & SATURDAY

The Burn SUNDAY

DAVIS & BROWN

Biotechnologist from England works as budding SIUC prof

By Christine Leninger
Staff Writer

A new faculty member recently took root in the plant and soil science department at SIUC.

David Lightfoot, assistant professor of plant and soil science, is a plant biotechnologist originally from Otley, England, but is now calling Southern Illinois home.

Lightfoot has been in Illinois for three weeks and said he likes it so far.

"I like being so close to major agriculture companies like Monsanto in St. Louis, because it opens up a lot of opportunities for people in the field including myself," he said.

Lightfoot's primary research involves a gene-related study of embryos to find a gene that controls the size of the plant's embryo.

On another level he is conducting research in nitrogen assimilation, trying to find a way to reduce the amount of fertilizer needed to make a soil with less nitrogen and more protein.

"The urgency of this research is in drinking water that has a high nitrogen content because of high amounts of fertilizer being used," Lightfoot said.

Plant biotechnology has been around since the first farmers, but the modern definition is the transferring of genes to plants that cannot otherwise obtain the gene. Plant biotechnology is also the work of eliminating undesirable genes in plants.

"This can and has been done. For instance, a tomato has been designed to not get mushy," Lightfoot said.

Plant biotechnology is a growing

Plant biotechnology has been around since the first farmers, but today it involves transferring of genes to plants.

industry and very competitive.

"Anyone with a doctorate in the field is highly employable, and I would like to help students reach that point in their careers," he said.

Lightfoot's position is a part of the Biotechnology Initiative, a funding from the Illinois Board of Higher Education to address the needs of biotechnology in the sciences at SIUC, which created three new positions, including the one in plant and soil science, said Brian Klubeck, professor of soil microbiology in plant and soil science.

Lightfoot worked as a senior research assistant in the Oregon State University horticulture department prior to coming to SIUC.

"When I learned of an opening at SIUC it excited me because the institution has a good international reputation," he said. "I was also excited to work with graduate assistants and other students in the field to teach them and learn from them."

Lightfoot will be guest lecturing at the end of fall semester in a few of the advanced agriculture classes. In spring semester he will head a new class in agriculture biotechnology.



Staff Photo by Heidi Diedrich

Anthony Tafuri, graduate student in sculpture from Rhode Island, shows one of his sculptures while setting up his exhibit at the University Museum Thursday.

Student artists exhibit works at Faner museum reception

By Annette Holder
Entertainment Editor

Everyone's thinking of the environment and this artist is no exception.

Anthony Tafuri, graduate student in sculpture from Rhode Island, said his University Museum exhibit "Recent Sculpture" is influenced by nature, primarily the human body and rock formations.

Most of the sculptures in his exhibit are untitled because he wants people to form their own

opinions without any influence from a title created by him. Tafuri said his strongest piece, untitled, still remains interesting to him.

Tafuri said a lot of his artwork is made of more than one piece. He said he likes to do this because people make comparisons. Having more than one object as part of a sculpture causes people to make comparisons of the sculpture. Tafuri chooses cast aluminum and bronze for his pieces, priced from \$300 to \$1,200.

Robert Buller, graduate in

ceramics from Indiana, also is exhibiting "About Vase," a collection of eight pieces, at the reception. The earthenware exhibit of cylinder shapes features vases made of three sections stacked on top of each other.

Ben Meeker, University Museum curator, said Buller is unable to be at his exhibit because he is in Nakajo apprenticing for a Japanese ceramic artist. The reception is 6 p.m. to 8 at the University Museum. Admission is free.

SIDEWALK SALE

Thursday, Friday, & Saturday

FASHION CONNECTION
TAKE UP TO AN ADDITIONAL

50% off the entire stock
of summer merchandise!

Follow our Sidewalk of Savings!
at
608 S. ILLINOIS AVE.
HOURS: 10 am-6 pm

710
BOOKSTORE

UP TO **70%** off selected shorts, T-shirts,
tank tops & sweatshirts!

ALSO ON CHILDREN'S WEAR
710 S. Illinois Ave.
TH & FRI 8:30 am - 5:00 pm
SAT 8:30 am - 1:00 pm

GUZALL'S

50% or more off regular price
of Sidewalk Sale Items
GIVEAWAY PRICES!

40% off SIU printed apparel
inside the store

609 S. Illinois Ave.
Hours: 9 a.m. - 6 p.m. 457-2875

Summer Merchandise

up to **70%** off

ruthie's

702 S. Illinois Ave. • 9 am-6 pm

84 NISSAN 200 SX Spd. 1/2, p/s, am/fm, very reliable, \$2175 OBO call 549-6733
85 TOYOTA COROLLA LE 4dr, Spd, air, am/fm cassette, cruise, p/b, p/s, exc. cond. \$3575. 457-0107
83 HONDA CIVIC, Excellent cond, \$1200 867-2433.

82 FORD GRANADA, V6, all options, good condition, 79,500, am/fm cas, \$1850 obo, 529-1337 or 453-7891.

81 FORD ESCORT, V6, auto, 2 door, 80xxx, SP90 O.B.O., call 549-4503 or 453-5370
1990 PROBE GT, red, 13xxx, loaded, 5sp, mtl sell. \$11,000. OBO. 549-0548 or 542-2579 after 4pm

1987 MAZDA RX7 5 sp, a/c, am/fm, cast, ps, pb, power sunroof, clean and out, exc. cond., asking \$6550, 457-5307.

1986 MITSUBISHI GALANT, auto, all power, loaded, 4 dr, very, exc. cond. \$2850 obo. 985-6870.

1984 MAZDA RX7 GSI-SE, 5 sp., a/c, am/fm, cas., equalizer, cruise, ps, pb, power, silver, with red leather interior, sunroof, 77,700 mi., exc. cond., one owner, \$5000, Call 687-2376 days.

1983 COROLLA SR5, 2dr, Spd, by owner, am/fm cass., ps/pb, clean in and out, exc. cond., \$5,495. 457-5307

1983 HONDA CIVIC 4 dr, Speed, A/C, am/fm, 67,000 mi., exc., 4798. Excellent condition \$2,450, 457-4798.

1983 TOYOTA COROLLA, 4dr, 5 speed, A/C, am/fm, runs excellent \$1,800 negotiable, 457-5307.

1980 CUPPASS SUPREME, exc. auto, new tires, ps, 3875 OBO 457-6690 or leave message

1978 FORD MUSTANG 4 cylinder, good cond., a/c, am radio cassette. \$800 neg. Call 457-4649.

1975 MERCEDES 3000, Remarkable Cond., Cruise, power, am/fm, 4 dr., low mi., \$4750, 457-2873.

1971 OLDS DELTA 88, 4dr, hard top, 80yl, showroom cond., low mi., must see, call 529-5482

AAA AUTO SALES & Service. Buys, sells & trades cars. See us at 605 N. Illinois or call 549-1331.

GOVERNMENT SEIZED VEHICLES from \$100. Ford, Mercedes, Corvilles, Chevy, Suzuki, Buys/Gives. Call 805 962-8000 Ext. 5-9501

TOYOTA CORONA, 78 auto, am/fm, 4dr, 92,000mi. good cond. \$800, 457-5504.

VOLVO 1975 STAWGN, 4 spd clean and reliable. Must Sell \$600 obo call 529-4057.

1984 INTERCEPTOR 500 Good cond, 11,xxx miles \$1,500 obo 529-3929

1983 V45 750 INTERCEPTOR 11K mi. good cond. \$1,800 no phone 510 S. Forest anytime

89 HONDA ELITE 500 Scooter, pink & dk grey, W/basket, exc. cond, low mi. Still under warranty, helmet included, \$725, 529-2213.

INSURANCE
Short & Long
Health - Term
Standard
Auto - High Risk
Motorcycles & Boats
Home & Mobile Homes
AYALA
INSURANCE
457-4123

Win! Place!
Show!
in classified
Place your ad to sell the items you no longer need or want.
Show them to the interested customers that answer your ad.
Win every time. You set the price. You make the sale.
Daily Egyptian
536-3311

85 YAMAHA LOTS of chrome, \$1,650, 83 750 Spectrum, cast, 3 speed, at City Tech. 5590. 529-5482

1987 YAMAHA RAZZ, scooter, black, \$450 abo., great for around town, 549-2873.

71 DODGE MOTOR home, shower, toilet, galley, 3 dr., excellent cond., \$1995 call 687-4577

12 WIDE 2 BDRM, A/C, furnished, in good condition, clean, near SIU campus on E. Park. 529-5505

WILWOOD MOBIE HOMES SALES & SUPPLIES, located 3 1/2 mi. S. of Univ. Mall on Giant City Road, C'dale. Inventory Clearance, Big Discounts on Selected 91 models on the lot, Ready to go, 10 wide, 52 to 80 feet long. 2 or 3 Bdrm, 1 or 2 baths. Now is the time for big savings on your new home. Check out our huge patio department. Mon-Fri 8-5, Sat 11-5. 529-5331.

COMFORTABLE HOMES ready to live in, affordable, 10 or 12 wide, soft no. gas, a/c, lum., porches. 529-1941

1973 LAUNCHER 12X60 2 bdrm. new windows & doors, must be moved, M'boro, IL. \$3,000. 687-3648

1965 \$2500 2 bdr., 10 X 50, shadod loo, New carpet, appliances, underpinned, 549-5784 or 549-5223

VERY CLEAN 12 X 60 2 bdrm with central air, quiet & shady park, \$5,000. 529-5331

36 ACRES. LOCATED 3 miles N of Anna. 1000 foot road frontage, city water, 549-6612 days, 549-3002 night.

A CONSIDERED SPACE inspired by it's landscape. Home designed by architect for own family, combining amenity with economy of operation. Master suite w/ private study, loft, sunken living room with native stone hearth, major decks, mature woods. Union Hill. 549-5780

USED BOOKS, BUY-SELL-TRADE, paper books 50 cents + up. Hard covers \$2 & up. SIU and senior discounts. Also regional and rare books. Choice Books. Open 11-4. 213 S. Illinois. 529-1979.

PC INSTRUCTION SERVICE. Installation, Upgrades, ect. at your home or office. Best rates around. Call AM or PM 549-0235.

40% IBM PS/2 Discounts exclusive to students, faculty, and staff. The new 575X w/ a 2.88mb floppy is available w/ preloaded software on 80mb hard drive. For more information contact the IBM ECC at 549-0768 or 529-1229.

MACINTOSH UPGRADES & REPAIRS, Call Abi, Evenings & Weekends. 549-5735.

AIR CONDITIONERS, 5000 BTU \$95, 10000 BTU 110v \$165, 23000 BTU \$195, good condition. 529-3563

WANTED AIR CONDITIONERS running or junk. call 529-5290 We pick up.

CIGARETTES \$60 a Pack. For information send \$3 Along w/ long SASE to: J.M.L., BOX 373, Dept. D, Carbondale, IL 62903.

CITIZEN CALCULATOR ADDING Machine \$39, Pioneer Tuner 6500H \$50, Avanti Dren Fridge \$50, Sudy Postgraduate Queen Bed \$150, 2 Univoyal steel bedded radial tires \$20 each, Mossberg 500 12 gauge \$150, Lineman's Boots Size 9 \$40. 457-8726.

Electronics
NINTENDO GAME BOY, Tapes and Accessories. 457-5944

Furniture
CARBONDALE JENNY'S ANTIQUES & used furniture Open 9-5 except Sun. 549-4978

MOVING SALE, QUEEN sz. futon mattress, gas grill, coffee table, etc. call 684-5638, 9am to 9pm.

CHEEK OUT OUR New Sales and Chairs, starting at \$159.95 to \$399.95, also breakfast sets, Wildwood Sales, 3 1/2 mi. S. of Univ. Mall on Giant City Rd., C'dale. 529-5331.

SOFA-SLEEPER & RECLINING Chair, Good Condition, \$125 for both, O.B.O. Will Sell Separately. Call after 4:00 p.m. Rob-549-0415.

UPRIGHT FREEZER, HARVEST gold, call eve. after 5p. m. 549-3400

QUEEN SIZE WATERBED, hot, heater, all accessories included \$100 negotiable. Call 529-2824

BED, DRESSER, TABLE and chairs, color tv, couch, recliner, table, washer & dryer, refrigerator, air cond., file cabinet, buffet, & misc. 529-1941

SPIDERWEB-BUY and sell used furniture and antiques. South on Old 51, 549-1782.

Musical
WANTED USED KEYBOARDS, guitar amps and P.A.s, don't forget to sign up for 91's battle of the bands, visit our new recording studios, rent the best, Sound Core Music. 122 S. Illinois 457-5641

TASCAM M-30 8x8x8 mixer. Paid \$1350 will sell for \$600. Tascam 34, 4 channel recorder, paid \$1700 will sell for \$800. Yamaha MV-802 8 channel stereo rack mount mixer \$250. All like new condition. Professional Compro music notation software for Macintosh latest version, discounts for \$379, I'll sell for \$200. Call 457-8609.

Pets & Supplies
PARROT 2 1/2 Year old, Chattering loudly, very loving & talks, large cage and supplies. \$350 529-3120

2 FEMALE MINIATURE Smooth Chocolate Dachshunds. AKC Registered/Champion Bloodline. 9 wks. old, \$175, 457-7006.

Miscellaneous
AIR CONDITIONERS, 5000 BTU \$95, 10000 BTU 110v \$165, 23000 BTU \$195, good condition. 529-3563

WANTED AIR CONDITIONERS running or junk. call 529-5290 We pick up.

CIGARETTES \$60 a Pack. For information send \$3 Along w/ long SASE to: J.M.L., BOX 373, Dept. D, Carbondale, IL 62903.

CITIZEN CALCULATOR ADDING Machine \$39, Pioneer Tuner 6500H \$50, Avanti Dren Fridge \$50, Sudy Postgraduate Queen Bed \$150, 2 Univoyal steel bedded radial tires \$20 each, Mossberg 500 12 gauge \$150, Lineman's Boots Size 9 \$40. 457-8726.

ALL NEW
2 & 3 Bedroom Townhouses

- Dishwasher
- Washer & Dryer
- Central Air & Heat

LUXURY
Available Fall 1991
529-1082,

Win! Place!
Show!
in classified
Place your ad to sell the items you no longer need or want.
Show them to the interested customers that answer your ad.
Win every time. You set the price. You make the sale.
Daily Egyptian
536-3311

FULL SIZE DRAFTING Table, Adjustable Chair, Parallell Bar & Drafting Light, Exc. Cond. \$300 abo. C'dale. 529-4204.

FOR RENT
Apartments

TWO LARGE ONE Bedroom Apartments. Furnished, ac, no pets, available June. Close to campus. 457-7337.

DISCOUNT HOUSING, 2 miles W. of Carbondale, 1 & 2 bdrm furn apt, absolutely no pets, call 684-4145.

1 BEDROOM APARTMENTS Fully furnished. No pet. No pool. Must be neat and clean. 1008 Sil. call 457-7782.

2 BEDROOM UNFURNISHED. Close to campus. Water and trash included. 549-5420.

LARGE 1 BDRM apt. \$175/mo. trash & water, lum, slow & frig incl, good cond w/carpet. Call G.H. Rentals 687-3495

C'DALE, FURNISHED, 3 Bdrm, 1 block from campus, at 410 W. Freeman, \$510/mo. also 2 Bdrm. in M'boro, \$200/mo. 687-4577.

CLOSE TO CAMPUS. Efficiency studios. 1 & 2 Bdrm. On-site management. 510 S. University 457-7941 or 516 S. Rawlings 549-2454. Renting Fall/Spring.

BRANDNEW 2BDRM CLEAN & furnished 2 or 3 people, \$165. Poplar, 2 bills to SIU 529-3381 or 529-1820

BEAUTIFUL BRAND NEW 3 bdrm apt. \$165. Poplar, furnished, carpet, a/c, never lived in, ready for Fall. 529-3381 or 529-1820

NICE, NEVER, 1 BDRM. furn. carpet, a/c, 313 E. Freeman or 509 S. Wall. 529-3582

NEW RENTAL LIST out of locations and prices. New and older. Close to SIU. In box on front porch and office. 508 W. Oak 529-3581 or 529-1820

APT., HOUSES, TRAILERS. Close to SIU. Furn. 1, 2, and 3 bdrm. Summer or Fall. 529-3581 or 529-1820

LG OR SMALL 1 BDRM, includes all util. cable TV, 910 W. Sycamore. \$270 or \$200 first/last/deposit 457-5193.

LRG 2 BEDROOM. 1 1/2 miles from campus. Water, trash, heat furnished. Very quiet area. Responsible adults only. No pets. 529-4305.

GEORGETOWN APTS. LOVELY, newer 3 bdrm furn. house & a law rooms needed. Open 11-5. 529-2187.

FURN. STUDIO APTS. with large living area, separate kitchen and full bath, a/c, laundry facilities, free parking, quiet, close to campus, mgt. on premises. Lincoln Village Apts., 5. 51 S. of Pleasant Hill Rd. 549-6990.

ROSEWOOD EFFICIENCIES 601 S. Washington, a/c, cable, carpet, quiet, laundry in bldg. Display opt. open now! See lists in apt. 1 anytime or call 529-3815 after 5pm. Bldg fills quickly.

CANTERVILLE 2 BEDROOMS Country Setting, large rooms, stove, fridge, disposal, D/W, w/d hood, Plenty storage space, Back terrace, \$380/mo 985-2942, 49-6622 days.

CARBONDALE AMERICAN BAPTIST Male Student Housing, 304 W. Main. Private rooms, Common kitchen and living areas, furn. Central A and H. No Pets. Open year round. Call 457-8216.

Daily Egyptian
Classifieds
UNTHINKABLE
SHOCKING
OUTRAGEOUS
UNBELIEVABLE
536-3311

IF MONEY MEANS anything to you rent 2/3 bdrm trailer from us. Prices \$125-450 Call 529-4444

M'BORO, VERY NICE 3-room apt, furn, air, no pets, util paid, by big wooded area and lake, reasonable.

1, 2, OR 3 BDRM. 409 W. Pecar, furnished, 2 Bks. NW of hospital, nice area. 529-3581

ONE THREE-BEDROOM and one four-bedroom apartment very near campus all utilities included in rents. Will rent room by room, use rest of apartment with other women students, or by the apartment, women students only. Call 529-5777 beginning Tuesday, July 23, 1991, 12:00 pm to 5:00 pm, 10 pm, to see.

NICE AND CLEAN 2 bdrm apt in quiet area, next to Union Hills subdivision, near Cedar Lake. Exc for grads. 529-1439 or 529-6154.

3 BDRM. NEAR HOSPITAL, 9 or 12 room lease. 549-3174 Please leave message.

FURN. APT. 1 Bdrm & 2 Bdrm, 202 E. Currier, 5 blocks from campus, No Pets, 457-5923 bet 7 p.m. or leave message.

5 MILES FROM SIU, 2 rooms, \$300/mo., 2bdrm, \$550/mo., Country setting, util. included, 985-6043.

M'BORO, 1 BDRM, QUIET, no pets, \$170/mo. 549-2888.

NICE CLEAN 1 Bdrm. 9 month lease \$270. You pay utilities 1 or 2 people, furn, carpet, A 509 S. Wall or 313 E. Freeman next to Bus Center 529-3381 or 529-1820

EFFICIENCY APTS FURNISHED. Close to campus, as low as \$180 for the Fall/Spring *****457-4422.

NICE QUIET 2 BDRM. A/C, carpet, year lease, deposit, 1 mi. E. New Rk. 13 549-6598 eve. no pets.

AREA. ALL SIZES! Nice Appliances. Available now. Low rents. rural & M'boro. Call 549-3850.

PERFECT FOR SINGLE or couple, small 2 bedroom house, NW plain outside, nice inside, reasonable utilities, large kitchen, new carpet and vinyl, 1990, avail. July 26/26. no sec 8, 529-2013.

3 BEDROOM, NW. location, a/c, large, large shabby yard, kitchen w/ dining area, lots of cabinets, 2 small bedrooms, 1 average, avail. Aug. \$465. 529-2013, 457-8194 Chris B.

APT., HOUSES, TRAILERS. Close to SIU. Furn. 1, 2, and 3 bdrm. Summer or Fall. 529-3581 or 529-1820

895 E. Park
FURNISHED
MOBILE HOMES
NEW 14' WIDES
-2 blocks east of Towers-
SHOWING DAILY 1-5
529-1324

Bonnie Owen Property Management
816 E. Main 529-2054
Renting for Summer & Fall
Stop by our office for a complete listing of addresses, descriptions, and prices.

Hillcrest Mobile Homes
1000 Park Avenue
(2 Blocks East of the Towers)
Rentals shown 1-5 daily
9 month lease (start at \$240)
-10% discount if paid by semester
-Walk or bike to campus
-Large shaded lots
-Reasonable utility bills (Nat. Gas)
-Central air conditioning
-Cable Television available
-Some with new furniture and carpet
-Some pets allowed
549-0895
529-2954 evenings

FOR RENT

ONE BEDROOM	TWO BEDROOM	THREE BEDROOM	FOUR BEDROOM
614 S. Beverage #4	604 S. Ashst#1	514 S. Beverage#1	514 S. Beverage#2
410 1/2 E. Hester	514 S. Beverage #1, #3, #4	640 N. Carver	640 N. Carver
607-1/2 W. Main (front)	908 N. Carico	305 Crestview	305 Crestview
903 S. Illinois Ave.	509 1/2 S. Hays	908 Carico	610 S. Logan
#101	903 Linden	903 Linden	612 S. Logan
614 W. Sycamore #1, #2	644 S. Logan	610 S. Logan	612 S. Logan
601 N. Springer #1	601 N. Springer #1	395 Crestview	395 Crestview
	414 W. Sycamore #1, #2	612 S. Logan	612 S. Logan
	404-1/2 S. University		

Available Summer & Fall 1991
529-1082

2 BDRM, \$150, behind like Nissan, 3 miles East of John A. Logan. 3 bedroom \$200. 529-4444.

NICE 2 BDRM, quiet setting, many extras, cable, sorry no pets. 457-5266. NICE 2 BDRM, furn., carpeted, air, gas appliance, cable TV, Washhouse laundry, very quiet, shaded lots, starting at \$200 per mo., 2 blocks from Towers. Parkview M-F, 1-5. 529-1324 or by appt.

2 BDRM TRAILERS, unfurn, a/c, quiet, water & trash incl. Summer \$120/mo. Fall \$160/mo. 529-1539.

UNBELIEVABLE LOWEST PRICES anywhere! \$1251 2 Bdrms. Air. Carpet. Clean! Save \$\$\$! 549-3850.

FOR HIGHEST QUALITY in mobile home living - check with us first - then compare; quiet atmosphere - affordable rates - close to campus - Summer rates reduced - no appointment necessary. Roxanne Mobile Home Park Rt. 51 South 549-4713. Glison Mobile Home Park 616 E. Park St. 457-6405. Sorry no pets.

MOBILE HOMES FOR rent or for sale on 2 year contract. Trade reasonable rents for equity. 1 pay lot rent and taxes as a natural for students. Inquire Charles Wallace 83 Roxanne Court South 51 Hwy. 457-7995.

14 X 70 THREE BDRM, small park near campus, furnished, central air, no pets. 549-0491.

EXTRA NICE 14 X 52 2 bdrms. Front & rear. Carpet. A.C. Furnished. Suitable for 1 or 2 people. 549-0491.

4 MI WEST, NICE 1,2,3 bdrms. \$145-200/mo. Furn. Water, trash, lawn care included. Call 687-1873

STUDENT PARK at 2308 Hansman 2 bdrms. \$180 or \$135 furn. pets neg. first, last deposit 457-6193

2 BLOCKS FROM CAMPUS. 12 & 14 w/ds, 9/mo. lease, \$240/mo. 10% off paid by semester. Central air, large shaded lots, reasonable utility bills, cable to new kitchen. Pets allowed. Showing daily 1-5 p.m. 1000 Park Ave. 549-0895/529-2954 evenings.

1 AND 2 BDRM. FURN. carpet, nice yards, a/c, natural gas, lease, deposit, no -> 529-1941

1 Bdr., FURNISHED with table, couch, bed, & desk, quiet place, a/c, water furnished, lease required, no dogs, located on Giant City Road near mall \$150 549-4344 or 529-2657

NEAR CAMPUS. 1 OR 2 bdrms., water and trash included, very clean. From \$150/mo. or unfurn. No pets. 457-7600 or 687-3707.

CARTERVILLE AREA, 2 bdrms trailers for rent, \$140 + deposit, \$175 + deposit, trash & water furnished. 985-6956.

NICE 2 BDRM, 12x52. \$200/mo, furn, carpet, a/c. No pets. Town & country #62. Avail. Aug. 5, Ph. 549-7837.

COUNTRY LIVING 2 miles E. nice 10x50 furn. 1 person \$130 Avail. now. 529-1820 or 529-3581

CARBONDALE NICE 2 bdrms, furnished, a/c, located in quiet park, call 529-2432 or 684-2663.

Townhouses

MARRIED PROFESSIONAL, 2bdrm., 1 mile to 13 East, a/c, nice quiet, carpet, no pets, year lease, Aug. deposit \$350/mo. or up. 549-6598 eve.

NEAR C'DALE CLINIC, 2 bedroom, huge kitchen w/ all appliances, skylights, private fenced pool, energy efficient construction, mini-blinds, av. Aug. professional families current tenants. \$550. 457-8174, 529-2013, Chris B.

Duplexes

PEACEFUL COUNTRY LOCATION, 1 bedroom, on 2 acres, 10 minutes from Mall, \$275 includes heat and water, cathedral ceiling, sliding glass door, garden spot, no pets, 529-2013, 549-3973.

Mobile Homes for rent

- Extra large lot w/ private country setting - 12x60, 2 bedroom - A.C. Furnished - Cable - Quiet - Extra Nice
549-4808 Noon - 9 p.m.

APARTMENTS SUITABLE FOR STUDENTS

Air Conditioning Fully Carpeted Furnished Close to Campus Charcoal Grills

Efficiencies & 3 Bdrm. Apts. THE QUADS "The Place with Space" 1207 S. Wall 457-4123 Show Apt. 9 to 4 p.m. M-F

Mobile Home Lots

C'DALE SOUTHERN MOBILE HOME Park. Close to SIU, Shady Lot. Natural Gas. 529-5331 or 529-5878.

Sublease

1 SUBLEASER NEEDED for Aug. thru May. 5 bdrms. with 4 other males, 7 bks from campus, pets OK, dis. counted utilities, rent \$175/mo. Call Tom at 618-273-9096, leave message.

SUBLEASER NEEDED FOR 2 bdrms extra wide, clean mobile home, A/C, low utility \$260/mo. neg. 549-6493.

MOVING, NEED SUBLEASER, 1 bdrms mobile home, walking distance to SIU very clean & totally furnished, \$150/mo. + util. 549-4841 or 529-4431.

HELP WANTED

LAW ENFORCEMENT JOBS \$17,542-\$86,682/yr. Police, Sheriff, State Patrol, corrections Officers. For info call (11805)962-8000 Ext. K-9501.

"WORK AT HOME" Assembly, craft, typing & more! Up to \$500+ weekly. Call 708-818-8814 ext. 249

BINDERY PERSON, PART-time. Experience preferred for folding, cutting, etc. Bring letter & resume & references to Henry Printing 118 South Illinois, Carbondale.

TRAINEE FOR SUPERVISOR position, intermediate care facility for developmentally disabled adults. Requires bachelor's degree in field that relates to human condition (i.e. psychology, rehab, sociology, art, music, recreation, education, etc.) some experience preferred. Submit resumes to Rosevelt Square 1501 Shoemaker Drive M'boro, Ill. 62966 or call for an appl. 684-2693 E.O.E. M/F/V/H

PART TIME YOUTH Crisis Counselor to provide after hours emergency services to runaway and out of control youth and their families. The YSP seeks to fill a part-time position which will rotate on call responsibilities. Qualifications are a bachelors degree in a human services field, two years counseling experience with youths and their families and one year crisis intervention experience. Must have reliable transportation, and in-surrender and be able to pass a DCFS background check. Send resume to Youth Services Program Coordinator, 604 E. College, Carbondale, IL 62901. Deadline for application is 7-31-91. E.O.E.

YOUR CAR + My Subs = Great \$ Starting pay \$4.50 per hour plus commission. Only 2 positions left. See Angie at Jimmy John's World's Finest Subs located at Carbondale. Apply in person after 2 p.m.

FULL-TIME POSITION IN "DIVERSITY" Dept. for graphic artist. Responsibilities will include: development of theme & graphic interpretation in the advert. & editorial areas. Computer literacy print background would be helpful + an understanding of ad/cvt. & Marketing principles. Original drawing skills would be helpful. Send resume to Southern Illinoisan PO Box 2108 Carbondale, IL 62902 EOE M/F.

PROGRAMMER, FULL TIME. Must be proficient in clipper '87 and Database II. Extensive accounting background required. Knowledge of SBT accounting a plus. Send resumes to: P.O. Box 159, Elville, IL 62932.

SHARP PERSON to work maintenance rental property and help in owner's business & other interests. Must be able to work 01:30 PM to 05:30 PM Monday through Saturday. Can work more hours by arrangement. Local permanent resident preferred but will consider on merit. SIU junior or high school senior may qualify. Write in own hand: writing a letter to P.O. Box 71, Carbondale, 62903 stating education, personal & family situation, what specific things you have done & can do, & hourly rate desired. All letters confidential.

SHARP PERSON to work office and help in owner's business & other interests. Must be able to work 01:30 PM to 05:30 PM daily Monday through Saturday. Can work more hours by arrangement. Local permanent resident preferred but will consider on merit. Ability to type helpful. Job considered permanent. Write in own handwriting a letter to P.O. Box 71, Carbondale, 62903 stating education, personal & family situation, what specific things you have done & can do, & hourly rate desired. All letters confidential.

LUXURY 2 Bedroom Apartments Bening Real Estate 205 E. Main 457-2134

LOOKING FOR A SHARP DEAL?

ANNOUNCEMENTS

MINI-STORAGE. All sizes, like new. Carbondale Industrial Park. Phone 457-4470.

PSYCHIC FESTIVAL, GATEWAY/Days Inn, Muddy, Illinois, 3 miles East Harrisburg, July 27-28. 10 A.M. - 7 P.M.

MENTAL HEALTH COUNSELOR for Crisis Intervention, part-time, weekday and weekend rotation. Requires Masters in Counseling and experience in mental health crisis intervention. Send resume to: Emergency Program, JCCMH, 604 E. College, Carbondale, IL 62901. For further information call 457-6703. Deadline for application is 5:00 p.m. August 12, 1991. E.O.E.

SHAWNEE CRISIS PREGNANCY CENTER Free Pregnancy Testing Confidential Assistance 549-2794 215 W. Main

Apts & Houses Furnished U-Pay Utilities 529-3581 529-1820

New Available: Sub 513 S. Wall \$30/300 Sub 409 W. Frank #2 \$40 Sub 600 W. College \$50 Sub 516 E. Taylor \$20 Sub 593 S. Wall \$30 Sub 313 E. Truman \$70 Sub 409 W. Frank #1 \$30 Sub 405 S. Graham \$30 Sub 605 W. College \$50 Sub 411 S. Graham \$30 Sub 405 S. Washington \$22 Sub 402 S. Collins #2 \$20 Sub 313 E. Truman \$70 Sub 313 E. Truman \$70 Sub 409 W. Frank #1 \$30 Sub 405 S. Graham \$30 Sub 605 W. College \$50 Sub 411 S. Graham \$30 Sub 405 S. Washington \$22 Sub 402 S. Collins #2 \$20 Sub 313 E. Truman \$70 Sub 313 E. Truman \$70

529-3581 BRYANT 529-1820

WANTED

GOLD, SILVER, BROKEN jewelry, coins, sterling, baseball cards, class rings, etc. J & Coins, 821 S. Illinois, 457-6831.

FOUND

1 GREY AND WHITE Cat found near Bel Aire Call 549-5544 or 457-6449

YARD SALE PROMO

YARD SALE, COLOR T.V. full size mattress, phone, 5 household items. July 27 & 28, 7:30 a.m.-1:00 p.m. follow signs off of 13 549-2055

LEGAL SERVICES AT MODERATE RATES.

Divorces from \$250. DUI, back child support, personal injuries, etc. Robert S. Frier, Attorney at Law. 457-6545.

STEREO SALES & INSTALLATION, car alarms.

Repair all make satellites and stereos. Satellite systems and TV lowers. We make house calls. 985-8183.

TYPING AND WORD PROCESSING.

The Office, 300 E. Main, Suite 5. Call 549-3512.

REMOVE UNWANTED FACIAL HAIR

permanently with electrolysis. Ph. electrolysis Carlo 542-5915

Chateau Apts. 2 miles from campus. Large efficiency, 9 month lease. 2 bdr. mobile homes at 608 North Oakland and on west edge of Carbondale. 91/2 month leases. Call 529-2620 105 Emerald Lane, Carbondale

Modular Housing

Giant step up in Mobile Home Living 2 & 3 bedrooms at 910 E. Park & 714 E. College. You'll love! • Great New Locations • Storage Building • Lighted Parking • Stundeck • Featuring: • Central Air • Cable TV • Washer/Dryer • Natural Gas Efficiency • Close to Campus • NO PETS
Woodruff Services 457-3321

Position for Fall Purchasing Clerk

Morning Work Block Needed
Duties include inventory control, spreadsheet usage, supply purchasing.
Deadline for applications Fri., July 26. Pick up application at the Communications Bldg., Room 1259.
Equal Opportunity Employer 536-3311 Daily Egyptian

Malibu Village Now Renting for Summer & Fall

Large Townhouse Apts. Hwy 51 South Mobile Homes 12 & 14 wide, with 2 & 3 bedrooms, locked mailboxes, next to laundromat. 9 or 12 month lease. Cable Available. Call: Debbie 529-4301

Discount Housing

(2 miles West of Carbondale Travelodge)
Students Preferred One and two Bdrms. Furnished Apartments Absolutely No Pets! Call: 684-4145

ADVERTISING

...Hits the right note for thousands of satisfied customers and businesses. Check the Daily Egyptian Classifieds To place an ad call: 536-3311 Daily Egyptian

U.S. team sweeps world game relays

SHEFFIELD, England (UPI) — American Hollis Conway won the high jump and the United States swept the relay races Thursday on the final day of the World University Games.

Conway, who still is affected by an abductor muscle injury, cleared 7-foot-9 1/4 for his best outdoor leap of 1991.

"My confidence was a bit low, but I jumped (7-9 1/4) so it's coming back fast," he said. "The medical staff put me together for the jump."

"That's a nice medal to add to the collection," added Conway,

who finished second to Cuba's Javier Sotomayor in the 1989 Universiade in Duisburg, Germany. Arturo Ortiz of Spain took the silver and Soviet Yuri Sergienko was third.

Elbert Ellis and Jerry Roney finished 1-2 for the United States in the men's 110m hurdles. Both men were clocked at 13.83, but Ellis was awarded first. Dmitry Buldov of the Soviet Union was third in 13.85.

The Americans again showcased their sprinting depth in the relays, winning all four of the team races.

Michael Bates and Jonathon

Drummond, the winners of the 100m and 200m respectively, combined with Boris Goins and Darwin Hall to win the 4 x 100m gold medal for the United States in 39.10. The Sierra Leone team were surprise silver medalists, ahead of Belgium.

The women's 4 x 100m team of Andrea James, Tamela Saldana, Chryste Gaines and Anita Howard won in 44.45, ahead of Britain and Italy.

Chuck Wilson, Marlin Cannon, Brian Irvin and Gabriel Luke were clear winners of the men's 4 x 400m relay, clocking 3:03.65. The

minor medals went to Jamaica and Italy.

Maciel Malone anchored the United States to victory in the women's 4 x 400m relay. Malone began the final leg five meters behind the fourth Soviet runner, but powered past her on the first bend to win in a combined time of 3:27.93. Keisha Demas, Tasha Downing and Toinette Holmes made up the rest of the winning team, ahead of the Soviet Union and Poland.

Steve Backley threw the winning distance of 286-10 on his first attempt.

SALUKI,
from Page 12

program," he said.

Herrin said parents of players who never get to see the games also get a chance to see their children play when games are televised.

The MVC has been televising games nationally since 1987.

Elgin said the networking of games gives the MVC the exposure it needs to grow and become a stronger conference.

The games are produced by Creative Sports Marketing, a national television syndication and production company based in Charlotte, N.C.

The games are carried on over-the-air television stations in MVC markets, the Chicago Sports Channel and ESPN.

Bob Scheer, spokesman for affiliate relations, said CSM has a 10-game and tournament package set up with the MVC.

FEUD, from Page 12

pain might come back after playing 17-18 days in a row. And it would be too hard on my leg and too hard to give the rehab a chance.

"Secondly, to go to England for the Fed Cup, play one match and to get eliminated in the first round, I don't think it was worth the time. But, basically, concern for the leg is what I'm worried about."

Seles says her injury has responded to conditioning.

She lost in straight sets to Jennifer Capriati in the Mahwah final, saying she was far from peak form. She expects that to be the case as well in San Diego.

"I'm not going to run to come back and play incredible tennis," she said. "Up to now I've been feeling great but the leg is tired."

On the opening day of the Federation Cup, Yugoslavia was

shut out in three matches by Indonesia.

Seles, a Yugoslavian who lives in Florida, has had a strained relationship with her country's tennis authorities.

She claims the Yugoslavian tennis officials showed little interest in her when she was there. She now has skipped the Federation Cup, the women's equivalent of the Davis Cup, three straight years.

The Yugoslavian federation says her parents promised she would play this time. Seles is skeptical.

"I don't know about that," she said. "Nobody spoke to them about it or phoned me. I really can't say anything on it, but they never talked to my dad or anybody."

By missing the Federation Cup, Seles could be ineligible for next year's Barcelona Olympics.

BUDGET, from Page 12

Two other sports also received major increases. Baseball received an increase of \$8,100 and volleyball received an increase of \$20,300.

Head Baseball Coach Sam Riggelman said the Saluki baseball team received an increase because the costs of ongoing maintenance and traveling have gone up.

"Two major things affected our budget: ongoing maintenance and a change in the conference schedule," he said. "We have to travel to Cedar Falls, Iowa, and Wichita, Kan., during the regular season and go back to Wichita again for the MVC tournament."

Not all teams that received an increase this year, however, received the extra funding for travel expenses.

The Saluki men's and women's golf and tennis each received an increase of \$2,400.

Dick LeFevre, coach of the men's tennis team, said all teams except men's football and

basketball and women's volleyball, were cut to the bone in the early 1980s and now they are starting to be rebuilt.

"This year is better than last year and that was better than the year before," he said. "We have 18 sports here, and you've got 17 other sports that want the money, so we're glad to get what we did."

Because the money was there this year, he was able to buy warm-up suits and new scoreboards and will send SIUC's top tennis players to play at tournaments this year that were too expensive to travel to last year.

"Last year, my No. 1 player was undefeated, but the NCAA selection committee said he didn't play enough of the better teams, so he didn't qualify," LeFevre said. "This year, we'll be sending our top players to a tournament in Lincoln, Nebraska to get some competition and hopefully they will qualify for the NCAA."

Puzzle Answers

AGES	TIACOS	ABLE
MITT	UNANE	TOAD
OFNDR	CONSEQUENCE	
STARR	HAUL	YEN
MESA LEEND		
BAS	DILL	LAOTSE
ERE	GILDO	PROU
GOVIT	HOUTSAYING	
AMER	BITAS	ANA
TARMAC	SELL	LYR
ALOT REEF		
APT	ARIA	ELVIS
MISSINGTHEPOINT		
ETAL	ERTIE	ACRE
NARY	ARTIEL	TEEM

Smokers And Non-Smokers
Be Paid \$70 to \$200
If Qualified For Research Studies and completes the program.
Call SIUC Psychology Dept. at
453-3561 or 453-3573
Mon. - Fri. 1 - 4 p.m.

EMPEROR'S PALACE
Today's Lunch Special
"Sweet and Sour Chicken" \$9.95
(Choice of Egg Roll or Soup & Fried Rice)
"Steak Teriyaki" \$3.95
(Choice of Egg Roll or Soup & Fried Rice)
529-1566
Call for Resv. or Carryout

CLOSET SPACE
THE FINAL FRONTIER



Are you on a continuing mission to seek out lost clothes? Is opening your closet boldly going where no one has gone before? University Closet Company can solve your problems. Whether you're looking for another bar to hang clothes on or an entire closet organization system, we've got it all. You can even rent units and return them at the end of the school year. Call University Closet Company today-It's purely logical.

Units available now or
Call and reserve yours for Fall Semester
UNIVERSITY CLOSET COMPANY
985-6399

QUATROS ORIGINAL
DEEP PAN PIZZA

549-5326
222 W. FREEMAN
CAMPUS SHOPPING CENTER

THE BIG ONE!
with FAST, FREE DELIVERY

\$9.59
Additional Ingredients 95¢ each



YOU GET A LARGE, CHEEZY DEEP PAN OR THIN CRUST PIZZA WITH ONE TOPPING AND FOUR 16 oz. BOTTLES OF PEPSI®

University Hall \$100.00

"SPECIAL DISCOUNT COUPON" \$100.00

Rooms as low as \$2630.00 per year with this \$100.00 ad.

- Individual resident controlled air conditioning in each room
- Outdoor heated pool
- Sand Volleyball Court
- Basketball Court
- Free Cable with HBO
- Superior Food Service located in our main building
- Study Lounges and two Intensified Study Areas
- Parking for everyone, Freshmen and Sophomores too
- Across the street from campus

ADDITIONAL NEWS:
★ Contracts will be available for Summer 92★

Your summer 1992 contract will get you access to our 30' by 70' pool, volleyball and basketball courts, cooking areas, and ample parking all summer long!

Approved for freshmen and sophomores, double and single rooms available, choose your own roommate. Per Diem charges will accompany any break stay.

Corner of S. Wall & Park Streets 549-2050

The Management of U-Hall has shocked Carbondale again with the announcement that U-Hall will remain OPEN during all University Breaks for students with one year contracts