

Southern Illinois University Carbondale

OpenSIUC

---

January 2011

Daily Egyptian 2011

---

1-28-2011

## The Daily Egyptian, January 28, 2011

Daily Egyptian Staff

Follow this and additional works at: [https://opensiuc.lib.siu.edu/de\\_January2011](https://opensiuc.lib.siu.edu/de_January2011)

Volume 96, Issue 89

---

This Article is brought to you for free and open access by the Daily Egyptian 2011 at OpenSIUC. It has been accepted for inclusion in January 2011 by an authorized administrator of OpenSIUC. For more information, please contact [opensiuc@lib.siu.edu](mailto:opensiuc@lib.siu.edu).

# DE

Daily Egyptian  
Since 1916

www.dailyegyptian.com

Friday, January 28, 2011

## Projects delayed, will continue despite decision

DAILY EGYPTIAN STAFF

A state appellate court's rejection of laws that would have funded the state's Capital Bill may delay SIU construction projects such as the Transportation Education Center, said David Newmyer, chairperson for aviation management and flight.

The First District Appellate Court rejected the legalization of video gambling and a tax increase on liquor, candy and hygiene products that would have gone toward the July 2009 \$31 billion Capital Bill Wednesday. But Steve Brown, spokesman for the Illinois Speaker of the House, said he expects the case to be appealed.

Newmyer said although recruitment in the aviation program will be hurt by the court's announcement, his program would not be affected as much as the automotive program. The program's Carterville facilities are deteriorating fast, he said.

Please see DECISION | 4

Volume 96, Issue 89, 12 pages

## Deans: move past Minish

JULIE SWENSON  
Daily Egyptian

Gary Kolb says he wants faculty, students and staff to move past their shock at former Provost Gary Minish's resignation and into the future.

"We're supportive of the chancellor as an agent of change on campus," said Kolb, dean of the College of Mass Communications and Media Arts. "She's taking on some really big and important things, and regardless of perception of style, these are things that need to get done, and we really want to move forward with a lot of the proposed changes."

Kolb is one of eight deans who collaborated on a statement released Thursday that touched on the deans' opinion of Minish's departure and their support for Chancellor Rita Cheng.

Terry Owens, interim dean of the College of Applied Science and Arts; Dennis Credit, dean of the College of Business; Ken Teitelbaum, dean of the College of Education and Human Services; Cynthia Fountaine, dean of the School of Law; Alan Vaux, dean of the College of Liberal Arts; David Carlson, dean of Library Affairs; and Jay Means, dean of the College of Science, exchanged e-mails for several days to draft the statement.

The statement said the deans had been optimistic about Minish being provost and disappointed with his decision to leave. It also pledges the deans' cooperation with Cheng and denounces judging her.

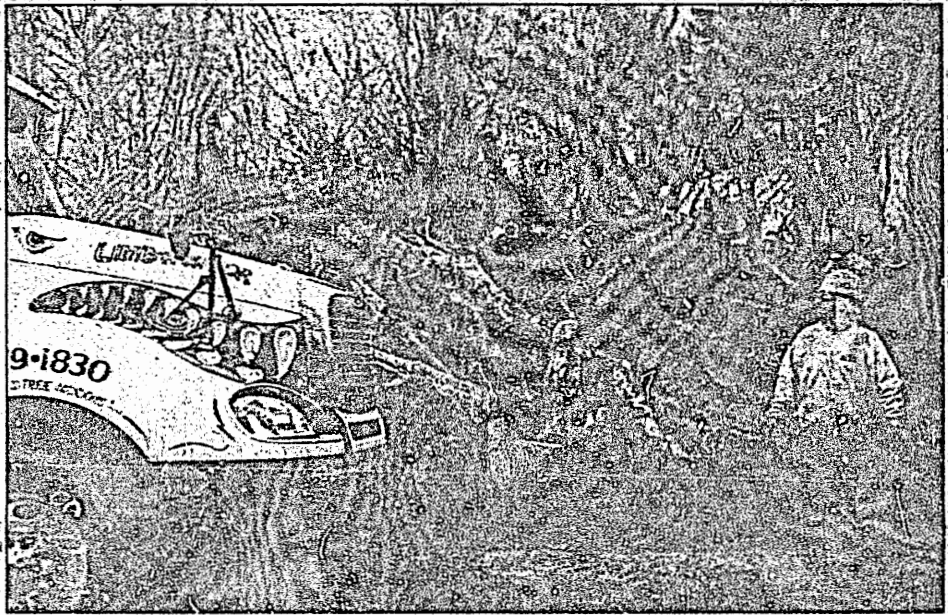
"We must and will work with her and the faculty to address these challenges and move forward," the statement said. "This is not the time for us to pause and search for evidence of the chancellor's success or failure."

Cheng has been charged with transforming and evolving the university, a much-needed action for the university to survive, the statement said.

Todd Winters, interim dean of the College of Agricultural Science, said he did not sign the statement out of respect for both Minish and Cheng and to maintain neutrality, though he was aware of the statement's progress. Winters also said he knew it was possible that Minish could leave the provost position before his Jan. 20 resignation.

Please see DEANS | 4

## Chipping away at storm debris



GENNA ORD | DAILY EGYPTIAN

Paul Nelson, a groundsman for Hansen's Tree Service, supervises operation of a mulching machine Thursday in a clearing outside the Stone Center. Nelson said Hansen's was contracted by the university to clear debris from the May 8, 2009 storm and set up the machine,

nicknamed "The Limb-a-nator," Wednesday. The machine fills semi-trucks with mulch to be driven off-site. Nelson said he and his crew had removed 20 truckloads of mulch as of 3:30 p.m. Thursday. "I just try to make sure the trucks get in and out," Nelson said. "It's a job."

## Lower tuition rate aims to keep university in the family

SARAH SCHNEIDER  
Daily Egyptian

Chancellor Rita Cheng said she hopes a lower tuition rate for children of alumni will give a needed boost to the university's enrollment numbers, which have been dropping steadily for the past 10 years.

The Board of Trustees approved the Legacy Alternate Tuition Rate in December as a 20 percent reduction in tuition starting in fall 2011 for incoming students whose parents are alumni.

Cheng said the rate will be used as a recruitment tool for students not only in Illinois but also from across the country. She said the reduced rate will let the more than 250,000 SIU alumni across the country and world know they are important, their families are important and their children are important to the university.

Cheng said higher education is about affordability.

"We know we have high achieving students who are children of alumni and may be living out of state so they think it is too expensive to go to SIU," she said. "If we can get the cost off the table, then we can talk about our programs, and why a student

*"We know we have high achieving students who are children of alumni and may be living out of state, so they think it is too expensive to go to SIU."*

—Rita Cheng  
SIUC chancellor

should come to SIU as opposed to schools that would maybe be closer to where they live."

John Nicklow, vice chancellor for enrollment management, said the alternate tuition rate will promote generational pride in the university and provide incentive for increasing enrollment.

He said the board has only approved the rate for incoming students and not for current students.

"It has to start at some point and be phased in," he said. "It would not have a positive impact on the university if it went university-wide all at once; there could potentially be a significantly negative impact on revenue."

Nicklow said current students who are children of alumni cannot receive this rate because of the Truth-in-Tuition Act. According to the act, students are guaranteed their tuition will not increase for four years and the rate is locked in. The university does not have the

authority to change that rate, even to lower it, she said.

Cheng said money lost from the 20 percent decrease in tuition will be made up by an increase in enrollment.

"Right now we are not getting those students so it will be new money coming in, maybe not as much as what we would be getting if they paid the full tuition, but it is new money," Cheng said.

Katharine Suski, associate director for undergraduate admissions, said the admissions office has already received 1,200 legacy applications from admitted students.

She said the exact amount of how much a student will save cannot be determined until the tuition is set for next year. Suski said the legacy rate will reach past the border states, which is a new practice.

"Out-of-state students pay considerably more than in state," she said. "Our students in the border states can use the border-state initiative, so students from Arkansas, In-

diana, Missouri, Kentucky and Tennessee can get a rate of tuition that is the same as in-state tuition, but if they have a parent who is an alumni they cannot double dip."

Jennifer Fissel, scholarship coordinator at Illinois State University, said ISU does not have any reduction of tuition for any population of students but does have scholarships for children of alumni.

Western Illinois University does not have anything similar to the legacy rate, either, said Terri Hare, director of university scholarship activities, but it has 10-12 scholarships per year that are highly competitive.

Cheng said SIUC chose to use a tuition rate decrease instead of scholarships in order to recruit students quicker.

"At this point we didn't feel we had time to raise dollars through the foundation to generate scholarship dollars, and we had the authority to set tuition, so we thought that was a quicker way," Cheng said. "We continue to raise money for scholarships and we will always have that as a strategy."

Sarah Schneider can be reached at [sschneider@dailyegyptian.com](mailto:sschneider@dailyegyptian.com) or 636-3311 ext. 255.

The Weather Channel® 5 day weather forecast for Carbondale

Today	Saturday	Sunday	Monday	Tuesday
42° 33°	44° 30°	46° 32°	40° 28°	30° 18°
10% chance of precipitation	10% chance of precipitation	10% chance of precipitation	20% chance of precipitation	70% chance of precipitation

CALL 529-5326

**THE REAL MEAL DELIVERY DEAL**

1 DELICIOUS 1-TOPPING MEDIUM PIZZA & TWO 20 OZ BOTTLES OF ICE COLD PEPSI

RAISE YOUR HEAD AROUND THAT!

222 W. Main Street  
Campus Shopping Center  
www.online.com

**DE Daily Deals**

Carbondale's **Mississippi Flyway**  
FOOD • DRINK • FUN

Monday: All you can eat fish  
Tuesday: 3 for \$5.99 & 6 for \$10.99  
Sunday: Free pool all day (10-12)

13 Pitches  
Catches & Donations  
Brews, Beer, & Soda  
Free Pool

10% off w/ student I.D! (excluding alcohol)

**MIKE'S MUSIC**

USED GUITARS CHEAP!

816 N. E. Main St.  
618.529.3444

**Yesteryear Tobaccos**

Over 300 different Cigars  
Humidors • Cigar Accessories  
Pipes • Tobaccos  
Imported Cigarettes  
Hand Rolling Tobaccos  
and Accessories

417-6419-913 & 1100

**Castle Perilous GAMES & BOOKS**

WE BUY, SELL, & TRADE  
VIDEOGAMES, DVD'S  
BOARDGAMES, & RPG'S

207 West Main Street, Carbondale, IL 62901  
PH: 1-800-297-2160

**DAZ RECORDS**

618.549.2651

Buy • Sell • Trade

**FAT CATTIES**

Free Wi-Fi

**DAILY DINNER DEAL**  
Monday-Friday 5pm-7pm  
ADD a Drink and Side order for \$1

529-FATP(3287)  
611 B. S. Illinois

**Underground PUB & GRILL**

Bud Schlafly's • Light  
Amberbock  
Across SIU Univ. & Mill St.  
618-351-0717  
www.undergroundillinois.com

**About Us**

The DAILY EGYPTIAN is published by the students of Southern Illinois University Carbondale 50 weeks per year, with an average daily circulation of 20,000. Fall and spring semester editions run Monday through Friday. Summer editions run Tuesday through Thursday. All intercession editions will run on Wednesdays. Spring break and Thanksgiving editions are distributed on Mondays of the pertaining weeks. Free copies are distributed in the Carbondale, Murphysboro and Carterville communities. The DAILY EGYPTIAN online publication can be found at [www.dailyegyptian.com](http://www.dailyegyptian.com).

**Mission Statement**

The DAILY EGYPTIAN, the student-run newspaper of Southern Illinois University Carbondale, is committed to being a trusted source of news, information, commentary and public discourse, while helping readers understand the issues affecting their lives.

**Copyright Information**

© 2011 DAILY EGYPTIAN. All rights reserved. All content is property of the DAILY EGYPTIAN and may not be reproduced or transmitted without consent. The DAILY EGYPTIAN is a member of the Illinois College Press Association, Associated Collegiate Press and College Media Advisers Inc.

**Publishing Information**

The DAILY EGYPTIAN is published by the students of Southern Illinois University Carbondale. Offices are in the Communications Building, Room 1259, at Southern Illinois University Carbondale, Carbondale, IL 62901. Bill Freivogel, fiscal officer.

**Reaching Us**

Phone: (618) 536-3311  
Fax: (618) 453-3248  
E-mail: [editor@dailyegyptian.com](mailto:editor@dailyegyptian.com)

Editor-in-Chief: Nick Johnson ext. 252  
Managing Editor: Jacob Mayer ext. 253  
Campus Editor: Julie Swenson ext. 254  
City Desk: ext. 263  
Sports Editor: Jacob Mayer ext. 256  
A/E Editor: Ryan Wyles ext. 273  
Voices Editor: Kathleen Hecktor ext. 261  
Photo Editor: Isaac Smith ext. 251  
Design Chief: Caleb West ext. 248  
Web Desk: ext. 257  
Advertising Manager: Sarah Hubbs ext. 230  
Business Office: Brandi Harris ext. 223  
Ad Production Manager: John Carmon ext. 244  
Business & Ad Director: Jerry Bush ext. 229  
Faculty Managing Editor: Eric Fidler ext. 247  
Printshop Superintendent: Blake Mulholland ext. 241

**Upcoming Calendar Events**

- American Red Cross Blood Drive**
  - 10 a.m. to 2 p.m. Jan. 24th and 25th.
  - Donors can give blood once every 56 days.
  - Student Development-Multi-cultural Programs and Services, University Housing, Gala House and the Black Male Roundtable are sponsors.
- Flight Simulator Opening**
  - 12 p.m. to 4 p.m. Jan. 29 in the Southern Illinois Science Center at the University Mall.
  - Raffle for a solar system quik and solar system hand bags held at 2 p.m.
  - Simulator use will be free for center members and \$5 per day use for non-members.
  - Raffle tickets are 1 for \$5 and 3 for \$10.
- "Have a Heart" Week**
  - Feb. 7th through 11th.
  - In exchange of \$20 Allied Physicians and Rehab is offering a health certificate worth \$220 good towards a first visit consultation and health screening.
  - Doctors Julie and Brian Bird, D.C. will be collecting donations for Carbondale Community Arts.
  - Call 529-5172 for an appointment.

**Pet of the week**

Brought to you by **Creekside Veterinary Clinic**

9351 Old Highway 13  
Murphysboro, IL 62966  
618.687.1766

Mon-Fri: 8am-5pm  
Sat: 9am-12pm  
Appointments Required

Free First Exam with an Adoption from Humane Society of Southern Illinois  
[www.humanesocietyusil.org](http://www.humanesocietyusil.org)

**Spirit**

Female, spayed, Labrador Retriever mix  
Chocolate with White  
Approx. 6 months old

Call the Humane Society at 618-457-2362 for more information about adoption.



# Tax increase could help SIU receive state money

**“Inconsistent increases and unpredictable timing on when rates will be set hinder short- and long-term planning for students and their families as well as administrators. This conceptual framework should aid the university in its planning.”**

— Christopher Kennedy  
U of I Board of Trustees  
chairman

**JULIE SWENSON**  
Daily Egyptian

The recent state income tax increase could help bridge the gap in state funding for Illinois universities, though it won't trickle in immediately, said SIU spokesman Dave Gross.

Relief could come in the form of legislation Gov. Pat Quinn signed Jan. 13 that temporarily increased the personal income tax rate from 3 percent to 5 percent and the corporate income tax from 4.8 percent to 7 percent.

The state still owes SIUC about \$130 million for fiscal year 2011, SIU President Glenn Poshard told the DAILY EGYPTIAN in December.

Illinois State University raised its tuition and fees in May by 6 percent, leaving the cost per credit hour at \$301, according to an ISU press re-

lease. The cost of tuition per credit hour at SIUC has more than doubled since 2000, going from \$100 to \$243 for first-year students. Student fees have almost tripled at the same time, going from \$1,151 to \$3,178, according to the SIUC Institutional Research and Studies website.

Jay Grove, a spokesman for Illinois State University, said factors that force universities to increase tuition include lack of state funding, decreased tuition compensation for students and inflation.

The University of Illinois Board of Trustees approved a measure Jan. 20 to keep tuition flat on an inflation-adjusted basis. Any proposed tuition increase would include a comparison to the most recent four-year average, a university release said.

The measure is meant to stabilize tuition increases and ensure the university stays affordable for students while trying to bring money into the university in light of furlough days, hiring restrictions and spending cuts, according to the press release.

U of I Board of Trustees Chairman Christopher Kennedy said in a university release the policy should help reduce the unpredictable nature of tuition by moving up the dates tuition increases are set.

“Inconsistent increases and unpredictable timing on when rates will be set hinder short- and long-term planning for students and their families as well as administrators,” Kennedy said. “This conceptual framework should aid the university in its planning.”

University of Illinois' three campuses at Champaign-Urbana, Chicago and Springfield rank first, second and third most expensive out of Illinois' 12 public universities, according to the College Illinois Prepaid Tuition website.

SIUC's tuition and fees rank fourth lowest out of the 12 public universities at \$10,461, according to the website. Only Governor's State University, SIU-Edwardsville and Chicago State University have lower tuition and fees.

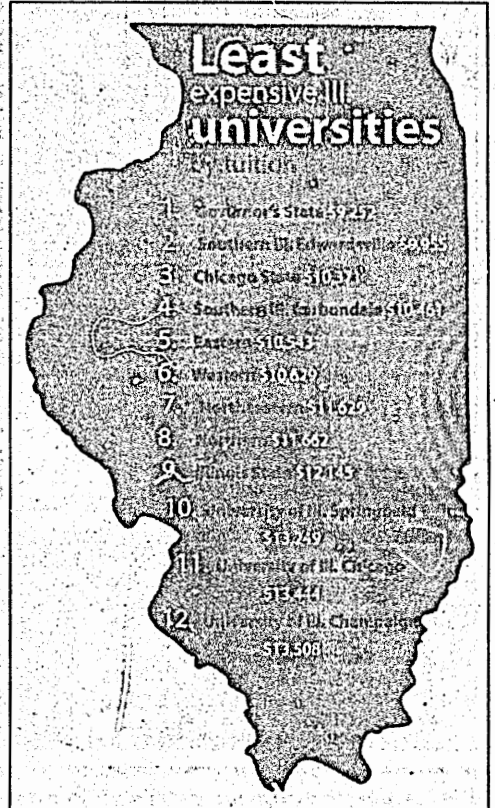
Marcus King, president of Undergraduate Student Government, said he expects the SIU Board of Trustees to raise tuition by 4 percent in the spring semester.

King said SIUC's tuition isn't as bad as U of I, but it could be if there are continual tuition and fee increases. If he had to choose between a tuition increase and a fee increase, he would choose a tuition increase because it pays faculty, he said.

He said tuition and fee increases can be avoided with careful planning, but the administration isn't to blame for increases. The increases are necessary even if they hurt students, King said, though the increase amount can minimize how much students are hurt.

“Tuition and fees work inside the university to keep things going,” King said. “But at the end of the day, if something is helping one group, it's hurting another to a degree.”

Julie Swenson can be reached at [jswenson@dailyegyptian.com](mailto:jswenson@dailyegyptian.com) or 536-3311 ext. 254.



CALLER WEST | DAILY EGYPTIAN  
SOURCE: COLLEGE ILLINOIS! PREPAID TUITION WEBSITE

## The Best Rentals in Town Available Fall 2011

www.carbondalere rentals.com

<p><b>Three Bedroom</b></p> <p>202 N. Poplar 1 506 S. Poplar 1-7 519 S. Rawlings 2-6 1619 W. Sycamore 1710 W. Sycamore 403 S. University 1130 W. Walkup 402 W. Walnut 404 W. Walnut 504 W. Walnut 820 W. Walnut 1,2 168 Watertower Drive 6299 Murphysboro Road</p> <p><b>Four Bedroom</b></p> <p>410 S. Ash 405 S. Beveridge 409 S. Beveridge 501 S. Beveridge 502 S. Beveridge A 503 S. Beveridge 506 S. Beveridge</p>	<p>510 N. Carico 209 W. Cherry 309 W. Cherry 311 W. Cherry 405 W. Cherry 407 W. Cherry 503 W. Cherry 606 W. Cherry 608 W. Cherry 614 W. Cherry 300 E. College 303 W. College 312 W. College 1-3 401 W. College 1-4 807 W. College 809 W. College 906 S. Elizabeth 104 S. Forest 511 S. Forest 603 S. Forest 502 W. Freeman 500 S. Hays 505 S. Hays 507 S. Hays 1 509 S. Hays</p> <p><b>Five Bedroom</b></p> <p>405 S. Beveridge 300 E. College* 312 W. College 1,2 906 S. Elizabeth 511 S. Forest</p>	<p>503 S. Hays 511 S. Hays 208 W. Hospital 2 210 W. Hospital 212 W. Hospital 610 S. Logan 308 W. Monroe 413 W. Monroe 417 W. Monroe 408 W. Oak 412 W. Oak 600 N. Oakland 506 S. Poplar 1-7 509 S. Rawlings 1,7 519 S. Rawlings 1,6 503 S. University 402 W. Walnut 404 W. Walnut 820 W. Walnut 1 6299 Murphysboro Road</p> <p><b>Six Bedroom</b></p> <p>467 S. Beveridge 502 S. Beveridge 307 W. College 906 S. Elizabeth 311 W. Elm 208 W. Hospital 407 W. Monroe 400 W. Oak 501 S. University 503 S. University 504 S. University 606 S. University 402 W. Oak</p>	<p><b>Seven Bedroom</b></p> <p>502 S. Beveridge 407 W. Monroe 501 S. University 503 S. University 400 W. Oak</p> <p><b>Nine Bedroom</b></p> <p>610 S. University 307 W. College</p> <p><b>Ten Bedroom</b></p> <p>610 S. University</p> <p><b>See Our Show Apartment</b></p> <p>507 S. Beveridge #5 Monday thru Friday 9:00am to 5:00pm Saturday 10:00am to 1:00 pm Pick up full rental list Feb 1st</p>
---	---	--	---

www.carbondalere rentals.com

\*Available now

529-1082 • 206 W. College Suite 11 • Carbondale

We are hearing voices




We like it like this

Voices Section

# DE

DAILY EGYPTIAN

**SPC FILMS**  
PRESENTS



**Jackass**

**Jackass 3D**

Fri. Jan. 28 - 7 & 9:30 PM  
Sat. Jan. 29 - 7 & 9:30 PM

Student Center Auditorium

**\$2 SIUC STUDENT**  
**\$3 GENERAL PUBLIC**

Starring: Johnny Knoxville, Ben Margera, Ryan Dunn  
Rated: R  
Running Time: 94 minutes

**DEANS**  
CONTINUED FROM 1

Vaux said the statement came out of the deans' desire to put Minishi's resignation behind them.

"The deans felt that they needed to make it clear that we are eager to get back to work, put the recent history behind us, get on with doing the university's business and work with the chancellor to get the job done," Vaux said.

Vaux said Cheng has a responsibility to lead a push for change.

"I am hopeful that she will do that in consultation with the deans

and the faculty," he said.

Means said he thought Minishi's resignation was unfortunate, but the deans wanted to concentrate more on the university's missions rather than actions of administrators that could affect how SIUC is perceived. The university can and will get through the challenges it is facing, he said.

"I think any time a senior officer of the university leaves after a brief period of time, it raises questions in the higher education community at large about the institution and what is going on there," Means said. "We have had, in recent years, a number of changes at higher level-

of the university, and we were looking forward to a period of stability; we're not there yet."

Carlson said SIUC needs involvement and leadership in these challenging times, and now is the time for reflection.

"This is an opportunity for us to catch our breath, to not jump to conclusions, to realize that we have an awful lot of positive developments at this university, and that we'll get through this," he said.

Julie Swenson can be reached at [jswenson@dailyegyptian.com](mailto:jswenson@dailyegyptian.com) or 536-3311 ext. 254.

**DECISION**  
CONTINUED FROM 1

"Those buildings were supposed to be temporarily built in 1938," Newmyer said. "They were supposed to expire by the late '40s, early '50s and here it is 2011."

The university has already received \$2,003,472 from the Capital Bill, according to the fiscal year 2010 state appropriations for the bill. Morris Library received \$160,721 in appropriations to date for renovations and expansion.

SIU system schools have received \$3,308,025 since FY 2010 from the Capital Bill.

Brown said he isn't sure when Gov. Pat Quinn's petition will be presented before the state Supreme Court, but he believes the court will recognize jobs depend on the Capital Bill.

SIU President Glenn Poshard said the university was allocated all of the money needed for the Transportation Education Center. The state Supreme Court spending along Gov. Quinn's petition to keep the Capital Bill's tax increases is key to insuring the state doesn't negate the \$31 billion owed for further construction of schools and other infrastructure, such as bridges and highways, he said.

Newmyer said there should be concern for projects that have yet to begin at SIU that would be funded by the \$31 billion Capital Bill because both revenue streams—the taxes and the legalized video gambling—are forestalled.

Brown said Gov. Quinn is expected to keep current construction projects going despite the court's decision.

"It's a \$31 billion program and

it's anticipated that it will continue," Brown said. "The authors of the bill don't believe they violated the Constitution and I believe the attorney general is going to go in and stay the appellate court decision."

Even though taxes to fund Capital Bill projects were loosely strung together, the state must somehow find a way to back the projects, Poshard said.

"These projects that have been paid for by this capital basically are general obligation bonds," Poshard said. "These bonds are backed up by the full faith and credit of the state of Illinois."

Poshard said he is confident the university will receive funds needed to finish the renovation of Morris Library and the \$4.5 million needed to fix the Mass Communications Building.

Saturday

YOU CALL IT!

OR SWAP YOUR

WASTETRACKS

# \$2

**SOUTHERN ILLINOIS**



**IDIE**

**IN THE PALM OF YOUR HAND**

**ARIZONA**  
Captured Ariz. fugitive planned to overdose on drugs at Yellowstone, become bear food

**WASHINGTON**  
Publicist: Charlie Sheen hospitalized with severe abdominal pains

**LOS ANGELES** — Charlie Sheen's publicist says the actor has been hospitalized in Los Angeles with severe abdominal pains. Publicist Stan Rosenfield gave no other details of the 45-year-old's condition.

Celebrity website TMZ.com was the first to report Sheen's hospitalization Thursday. TMZ says Sheen was taken by ambulance following an early morning 911 call.

The Emmy-nominated star of CBS' "Two and a Half Men" has been dogged by personal problems and apparent health issues. This is his third hospitalization in as many months. And just last week, CBS entertainment president Nina Tassler said network officials "have a high level of concern" about his off-camera behavior.

**SIUC Quit Smoking Program**  
Earn up to **\$1,050\***

Call **453-3561**  
Email: [smokolab@siu.edu](mailto:smokolab@siu.edu)

Students AND non-students welcome!

\*Program acceptance depends on confidential process.  
\*Payment depends on completion.

Director David G. Gilbert, Ph.D.

Not ready to quit yet? Earn \$225\*

**Aspen Court Apartments**



**1 | 2**  
**3 | 4**

**BEDROOM/ BATHROOM TOWNHOMES & APARTMENTS**

We have it all... Which will you choose?

Now Leasing for 2011



1101 E. Grand Ave. • [www.aspencourt.net](http://www.aspencourt.net) • 618-549-1700

**Arnie's Sandwiches**

Sandwich Trays Available For Your Superbowl Party!



Just North of Arnold's Market

**SANDWICHES**  
2031 S. Illinois Ave.

Open Daily from 11am to 5pm • 536-4300



Nick Johnson  
Editor-in-Chief

Jacob Mayer  
Managing Editor

Kathleen Hector  
Voices Editor

Julie Swenson  
Campus Editor

Ryan Voyles  
A/E Editor

Issac Smith  
Photo Editor

Wendy Weinhold  
Copy Chief

James Durbin  
Video Editor

Brandon Coleman  
Newsroom Rep.

Editorial Policy

Our Word is the consensus of the DAILY EGYPTIAN Editorial Board on local, national and global issues affecting the Southern Illinois University community. Viewpoints expressed in columns and letters to the editor do not necessarily reflect those of the DAILY EGYPTIAN.

# Voices

Friday, January 28, 2011 • 5

www.dailyegyptian.com

EDITORIAL CARTOON



GUEST COLUMN

## Lack of treatment, not mental illness, causes violence

JEAN CUNNINGHAM  
Chief psychologist  
SIUC Counseling Center

After the tragic shootings in Arizona, attention was drawn to the presumed mental illness of the shooter. The implication was that his mental illness caused him to shoot Rep. Gabrielle Giffords and 18 others.

Are mentally ill people more prone to violence than other people? Should we fear those who struggle with severe psychological problems? The popular press certainly suggests that this is the case. However, evidence indicates otherwise. A scholar at Oxford University has addressed this question with large-scale studies spanning a number of Western societies. Her findings show

that an elevated risk of violence is primarily associated with drug and alcohol problems, not with severe mental illness. Severe mental illness alone has a very small relationship with violent crime rates. Overall, your chances of being murdered by a stranger with schizophrenia are 1 in 14.3 million; you are three times more likely to be killed by lightning. If you want to live a long time, you would do better to watch your cholesterol levels and stay out of thunderstorms than worry about danger from the people with mental illnesses in our community.

Does this mean that treatment for mental illness is not important? As a mental health professional, I believe that treatment resources need to be more widely available to those with serious psychological

**66** People with mental health problems internalize public attitudes and become so embarrassed or ashamed that they often conceal symptoms and fail to seek treatment

— Presidential Commission

problems. This belief is not based on a fear of being assaulted by a mentally ill person, but it comes from my conviction that all people should have access to medical and mental healthcare because lack of access to care causes suffering and keeps people from living up to their potential.

Recently, funding for mental health services has plummeted and availability of treatment has greatly decreased. A headline in the Jan. 21

edition of the Southern Illinoisian read "Social services hardly on Easy Street" and this was one of 10 such articles published in the past two years. Our community resources for those suffering with mental illness are gravely underfunded, and this is also true for substance abuse treatment.

This semester, the Counseling Center's Voices columns will center on issues of social justice. We want to raise awareness of issues related

to fair treatment for everyone in our society. Are people treated equally and without prejudice? In a society where a diagnosis of schizophrenia is incorrectly associated with a high risk to others, this is not the case. When people ask for psychological help but cannot obtain it because of a lack of funding, justice is not served. A 2003 presidential commission on mental health issues concluded that "people with mental health problems internalize public attitudes and become so embarrassed or ashamed that they often conceal symptoms and fail to seek treatment."

This is unquestionably a tragedy, but far more in terms of quality of life and suffering among those with severe mental health problems than in terms of danger to others.

Gus Bode says: Send us more letters! If you can write coherently and would like to share your perspective with the world, please consider lending your voices to our pages.

To submit a letter, please go to [www.dailyegyptian.com](http://www.dailyegyptian.com) and click "Submit a Letter" or send it to [voices@dailyegyptian.com](mailto:voices@dailyegyptian.com). Please make your submissions between 300 to 400 words. If you have questions, give us a call at 536-3311 ext. 261.



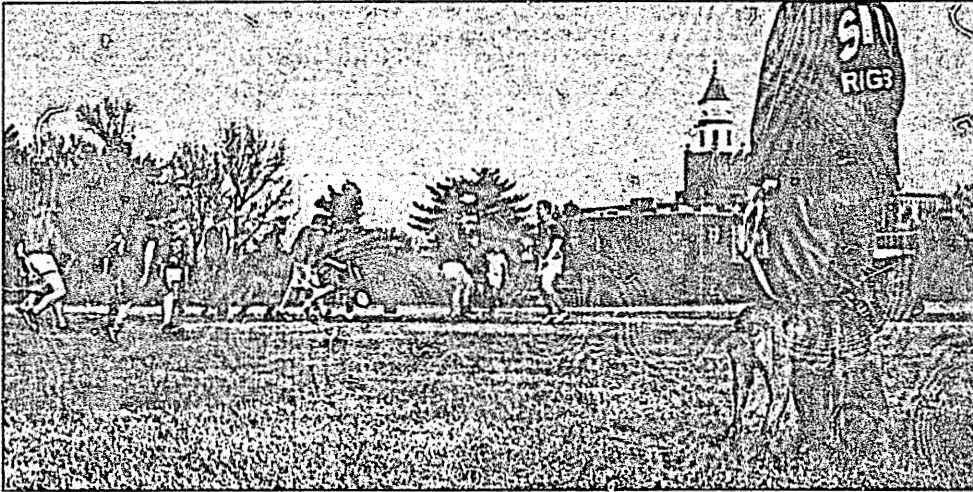
Submissions

Letters and guest columns must be submitted with author's contact information, preferably via e-mail. Phone numbers are required to verify authorship, but will not be published. Letters are limited to 400 words and columns to 900 words. Students must include year and major. Faculty must include rank and department. Others include hometown. Submissions should be sent to [voices@dailyegyptian.com](mailto:voices@dailyegyptian.com).

Notice

The DAILY EGYPTIAN is a "designated public forum." Student editors have the authority to make all content decisions without censorship or advance approval. We reserve the right to not publish any letter or guest column.

## Boxer prefers rugby



Men's rugby coach Jon Lasky oversees a pickup rugby game with his 7-month-old boxer Harley, Thursday at the Jean Stehr Field near Pulliam Hall. With over 40 members, Lasky said the men's rugby club is one of the largest clubs on campus. "We've been getting a lot of younger guys to join," Lasky said. The men's rugby season begins Feb. 28 when they travel to the University of Southern Indiana for the Southern Indiana Invitational.

JESS VERMEULEN  
DAILY EGYPTIAN

# GaMeRS build video games, connections

RYAN VOYLES  
Daily Egyptian

There was one logical step for Rob Craig after a lifetime interest in pinball machines and video games—create his own.

Craig, a computer information specialist in the College of Applied Sciences and Arts, said he spoke to students during the summer to see if anyone was interested in the idea of learning about the development of video games along with the business. Less than six months later, the Game Mechanics and Research Studio, or GaMeRS, became an official registered student organization.

Craig, who serves as the staff adviser for the group, said more than 12 people have joined since the group became an RSO in October. He said the main goal of the group is to not just design video games, but to also help students get a better understanding about what the game industry is like for programmers.

Caleb Henderson, a senior from Herrin studying electronic systems technology and president of the group, said members are passionate about not only playing video games, but the entire business of gaming.

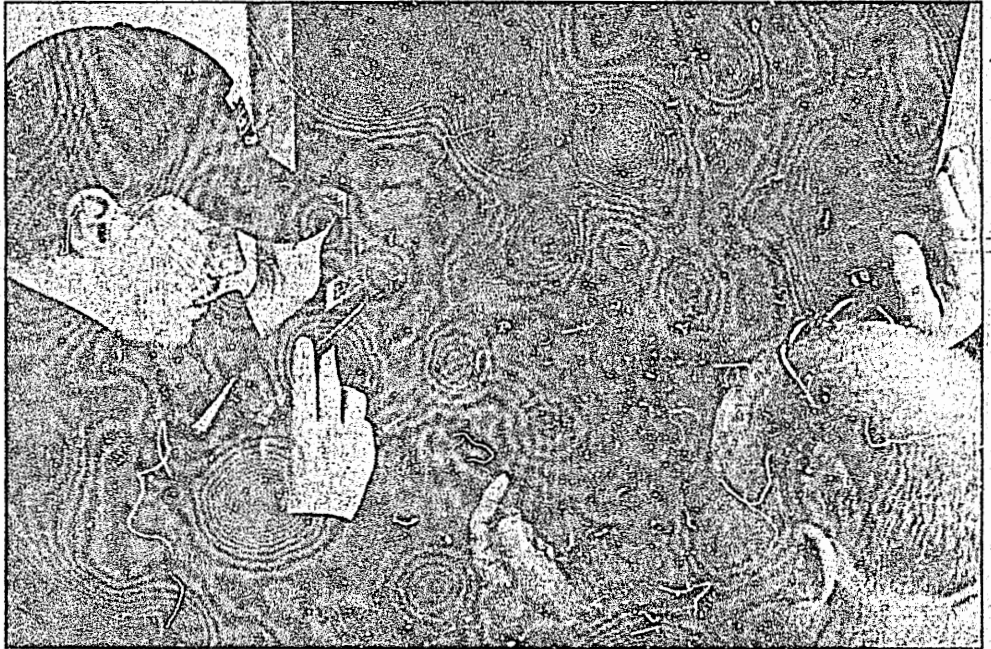
"We wanted to learn how it starts from beginning to end with games and what the entire process is like," he said. "I wanted to know how it goes from an idea to a concept to a multi-million dollar hit."

Craig said they try to bring in professional game developers through Skype to help members and talk with them about the inner workings of video games.

"What better way to get to know things than to go to the source?" he said. "Sometimes they don't respond—but those who do always provide a new insight for us."

The group has brought in several different developers in the last month alone, Craig said.

Dustin Johnson, a senior from Carbondale studying information systems technology and vice president of the group, said the



PAT SUTPHIN | DAILY EGYPTIAN

Caleb Henderson, left, a senior from Herrin studying Electronic Systems Technology and president of GaMeRS, and Rob Craig, right, staff adviser for GaMeRS, take apart a Pulsar arcade game

Wednesday in the Applied Sciences and Arts building. The GaMeRS RSO focuses on the development of video games and the video games industry. The group rebuilt the 1980 game.

firsthand accounts of the industry from the speakers help provide a better understanding of what to expect if they want to become game developers.

"When we talked to Dave Ellis (game designer at Vicious Cycle Software), we were asking him about what they were looking for when they hire people and what departments hire the most," Johnson said.

The group, which Craig said has roughly 12 to 14 members who come to meetings, has already begun developing its own video game. The game, "Dawg", is similar to the arcade game "Frogger", but it's set on the SIUC campus, said Randall McLaughlin, a senior from Vienna studying technical resource management.

**“When you create, you really feel a sense of accomplishment because you’ve taken a bunch of different numbers and codes and made something people can enjoy.”**

— Caleb Henderson  
president, GaMeRS

He said the first project the group undertakes would be more simple to help the members learn how to use game engines, or software used to program and design games.

"One of the main purposes of these first projects is to help people become familiar with these tools available to them," McLaughlin said.

Craig said game engines give designers a starting point to create games.

"Rather than creating the

wheel, here's a wheel that we can customize and make into anything we want," he said. "It gives people a tool set, like Photoshop, to do whatever we really want."

Henderson said a person gets a different feeling when they create a game instead of just playing one.

"When you create, you really feel a sense of accomplishment because you've taken a bunch of different numbers and codes and made something people can enjoy," he said.

Johnson said anybody is

welcome to join the group, especially if they have not worked on creating video games.

"We are all learning together," he said. "People have this misconception they already have to know how to program games to be a member of the group."

The group meets at 2 p.m. Fridays in room 204B of the Applied Sciences and Arts building.

Ryan Voyles can be reached at  
rvoyles@dailyegyptian.com  
or 536-3311 ext. 258.



EGYPT

Protester violence escalates outside Egyptian capital, democracy leader ElBaradei returns

CAIRO — Violence escalated in two cities outside the capital Cairo Thursday when anti-government protesters torched a fire station and looted weapons that they then turned on police.

CAIRO — Violence escalated in two cities outside the capital Cairo Thursday when anti-government protesters torched a fire station and looted weapons that they then turned on police.

CAIRO — Violence escalated in two cities outside the capital Cairo Thursday when anti-government protesters torched a fire station and looted weapons that they then turned on police.

By Thursday evening, Facebook, Twitter, cell phone text messages as well as BlackBerry Messenger services were interrupted, possibly by organizing by authorities to hamper protesters from moving.

NEW ORLEANS

Potentially fraudulent claims top 7,000 in process to compensate victims of Gulf oil spill

NEW ORLEANS — The \$20 billion fund responsible for compensating victims of BP's Gulf of Mexico oil spill has received more than 7,000 potentially fraudulent claims, many of which have been referred to the Justice Department for criminal investigations.

The Justice Department has already indicated at least eight claimants. The fund was set up in August to handle thousands of claims for compensation from residents, business owners and fishermen across the Gulf Coast and beyond who can prove they suffered financial losses from the spill.

Felberg testified in Washington on Thursday before a subcommittee of the Senate Committee on Homeland Security and Governmental Affairs. Lawmakers criticized Felberg's operation of the fund and the slow pace of processing claims, questioning his commitment to transparency.

WASHINGTON

House Republicans weigh plan to privatize Medicare for those 64 and younger, leaders to decide

WASHINGTON — Months after they hammered Democrats for cutting Medicare, House Republicans are debating whether to relaunch their quest to privatize the health program for seniors.

Party leaders will determine if the so-called voucher plan will be part of the budget Republicans, put forward in the spring. "No decisions have been made on the details of our House GOP budget," Michael Steel, a spokesman for Speaker John Boehner of Ohio, said Thursday.

But replacing Medicare's open-ended benefit with a fixed payment would cut projected spending much more deeply.

NEW YORK

Snow shovel, repeat: East Coast digs out again as new storm adds to relentless winter

NEW YORK — Enough already. People across the Northeast wearily shoveled their sidewalks and dug out their cars — again — after gettinglobbered by the latest in a seemingly never-ending string of snowstorms.

In the Washington area, up to 7 inches of snow renewed memories of last year's "snowpocalypse" and created chaos when it hit the nation's capital at the height of the evening rush hour Wednesday, forcing commuters into treacherous, slip-and-fall drives home.

New Yorkers, keeping close watch on the cleanup after a post-Christmas blizzard paralyzed the city for days, had it a little easier this time. The heaviest snow arrived overnight, when there weren't many cars and buses around to get stuck.

WIREPHOTOS

Deadlines
Line Ad: 12 noon, 1 day prior to publication
Display Ad: 12 noon 2 days prior to publication

Line Ad Rates
All line ad rates are based on consecutive running dates. For more information, contact the classifieds desk at (618) 536-3311 ext. 228

Classified Ads
Open rate of \$13.50 per column inch. Frequency and contract discounts are available. For more information, contact Andrew (618) 536-3311 ext. 231

Legal Notices
DAILY EGYPTIAN NOW accepting Public and Legal Notice

For Sale
Notary Public services now available
Call for rates! 618-536-2311

Auto
BUYING JUNK CARS, running, wrecked, flooded, crash paid, any year
Call 618-201-3492.

Parts & Service
STEVE THE CAR DOCTOR, Mobile Mechanic and used furniture, 457-7954 or mobile, 525-5300.

Homes
HOUSES FOR SALE
600K & up
call 644-3850

Appliances
REFRIGERATOR 1 YEAR \$195, wash & dryer 3 year \$350, stove \$150, sold by owner refrigerator water/ice door, \$295, 525-6822.

Computers
SALUNO COMPUTER SERVICES, computer repairs, websites designing, networking, 828 E. Main St. Sura C, 618-551-4108.

For Rent
2 BDRM TRAILER
bus avail, \$27.50 & up/mo.
Call 549-3350.

Roommates
ROOMMATE WANTED FOR HOUSES ON MI Street, MI or F, 1 bedroom apt, please call Clyde Swanson at 549-1392 or 324-3763.

Apartments
GREAT LANDLORDS, 1&2 bdrm, duplex apts, avail full, cat, no pets, at 606 E. Park St, 2011-3732.

SCHILLING PROPERTY
635 EAST WALNUT ST.
Carbondale, IL 62901
618-549-0639
www.schillingprop.com

VERY NICE 2 bdrm, hardwood floors, w/d, a/c, big bdrms, nice safe location, Van Arman 549-4935.

NICE 1 & 2 BDRM, rental list at 2008 Voodvier, a/c, near shopping, lease & dep, no pets, 529-2535.

GREAT 1 BDRM apt, Short/Long term, \$370/mo, pets ok, 618-201-1825.

EFFICIENCY APT, \$250/mo, good neighborhood, clean, quiet, low util, trash & water incl, on site manager & laundry, for serious students, 694-5127.

NICE 1 & 2 bdrm apts, close to campus, avail now, rent call Clyde Swanson at 549-7292 or 924-3763.

BEST BUY IH studio apt, starting \$265/mo, near SAJ, fun, laundry in building, call 457-4422.

Tired of NOSY Neighbors?
G&R Apartments
Include Private Patio/Deck!
G&R Rentals
891 E. Grand Avenue
549-4718
www.gandrar.com

One bdrm flat, close to campus, various locations, full size w/d, w/d, fenced, cats considered, \$530(single), 457-8194 www.alpharentals.net

APARTMENTS & HOUSES, close to SUU, 1, 2 & 3 bdrms, avail now, Bryant Rentals, 529-1820 or 529-5561.

QUIET 2 BDRM, 425 Robinson Circle, 1.5 bath, eat-in kitchen, w/d, d/w, private fenced patio, calling fans, cats considered, \$780, Same location, avail 2220 N. Lincoln 540-457-8194.

ALPHA'S 2 BDRM, 747 E. Park, 1.5 bath, w/d, d/w, breakfast bar, private fenced patio, calling fans, cats considered, \$715, same location, avail 2421 S. S. \$695, 1000 Brent 5775-457-8194.

G & R'S BEAUTIFUL NEW, 2 bdrm townhouses, no pets, call 549-4713 or visit 851 E. Grand Ave or www.grentals.com.

2 BDRM, 1 1/2 baths, available by Jan 2011, w/d hook ups, no pets, close to campus 618-457-7337

DUPLEXES
2 BDRM 1 1/2 baths, 2 bdrms 1 b/d, w/ attach garage & appl, quiet area, \$650/mo, call 618-821-2565.

COUNTRY, C/D/AE, CLEAN, 2 bdrm, small dog or cat ok, ref. avail now \$495/mo, call 529-1898.

1 BDRM apt, near Crab Orchard Lake, \$375/mo, call 618-559-9561 or 618-282-4258.

BRECKENRIDGE APTS, 2050 S. I., 2 bdrm, unfurn, w/d hook up, no pets, display, 457-4387 or 457-7870.

4 BDRM house, newly remodeled, near campus, w/d, d/w, a/c, lawn care incl, pets ok, avail Aug call 618-719-1386.

BEAUTIFUL HOUSES ON MILL ST, 3, 4, 5 & 6 bdrms, walk to class, all amenities, some brand new, visit my Facebook page under Clyde Swanson, or please call, 549-7292, or 924-3763, or go to clydeswanson.wordpress.com

3 BDRM, NICE QUIET area, cat, w/d, d/w, no pets, quiet people only, avail now, 618-549-0061.

BRAND NEW, 5 bdrm, 2 master suites, 3 car garage, over 3000 sq. ft. upstairs sitting room, gourmet kitchen, w/airpoo tubes, walk in closets, 9 ft ceiling, hardwood floors, G.I. elementary school, large yards, \$2000, pets considered, 529-2013, 457-8194

CARBONDALE HOUSING CO. LEASING BEGINS Jan 18 for all your housing needs!

HOUSES IN THE WOODS RECEPTION PRICES... HURRY & CALL 549-3850.

COUNTRY SETTING, 100 FREE, 2 bdrm, carpet, gas appl, cat, pets ok, \$400 to \$600, call after 5pm, 694-5214 or 521-0258.

TOP MODEL COLORED (50 Crestwood Dr.), Luxury 3 bdrm house, 1 1/2 bath, w/d, cat, garage, pets, NO PETS, call 684-4145.

NOW RENTING FOR 2011, 1-4 bdrm houses and apts from \$250-\$380 per bdrm, Van Arman's 549-4935.

WEDGWOOD HILLS, 5 BDRM/3.5 bath, w/d, d/w, furnished, new appl, deck & storage, 549-5566.

4 BDRM, near Rec Center, 1.5 bath, w/d, d/w, ceiling fans, cats considered, 5995, 457-8194.

1, 2, 3, 4 & 5 BDRM HOUSES & APTS, rental list at 310 W. Cherry, walk to SUU, 549-4602, 9-4 pm.

PERFECT COLLEGE HOUSE, good for 4-5 ppl, huge unique bdrms, 2 big bedrooms, huge common area, granite countertops, nice oak hardwood fl, nice basement, Van Arman, 549-4935.

4 OR 5 bdrms, close to SUU, for Aug, central heat & a/c, no pets, call 924-1955.

3 BDRM/HOUSE, quiet neighborhood, close to campus, w/d, cat, no pets, nice carpets 618-457-7337

NEAL CAMPUS, 2.5 & 4 bdrm houses, w/d, most cats, free move, Also Greendale Dome (211 B. + Freddie Dr.), Also Zuma (Lambert SUU, SEABOARD, nice basement, houses, w/d, cat, 1 1/2 baths, carpet, patio or huge deck, free move, NO PETS, call 684-4145.

OUR NEW HOUSING option, getcarbondaleapartments.com, offers an interactive way to search for housing solutions by price, amenities and location. The search engine also offers a way to view pictures and floor plans of the property to make your housing search a breeze. In addition, the online accessibility makes it available to you 24 hours a day, 7 days a week. Call a classified advisor at 536-3311, option 2, for information on how to take your vacancies on getcarbondaleapartments.com.

2 BDRM, \$300/mo, deposit, plus utilities, avail now, quiet for student students, no pets, newly painted, rural area, call Mary, 549-1815.

3 & 4 BDRM houses near campus, excellent central, w/d, cat, no dogs, lawn service, avail Aug, 201-5513.

Brookside Apartments
- 1 & 2 bedroom units Available Now!
• ALL UTILITIES INCLUDED!
• Newly renovated upgraded available
• Central A/C and Heat
• Pet Friendly, On-Site Dog Park
• Ample Parking
• On-Site Management
• Free Tanning
• 24 Hr. Maintenance
See us today for a personal tour or visit us at www.millsapartments.net
1200 E. Grand Ave. • Carbondale • 549-2600



**RENTING FOR 2011-2012**

1.bdrm-701 W Cherry  
1.bdrm-303 E Hester

4.bdrm-511, 505, 503 S Ash,  
802, 406, 321, 319 W Walnut  
501 S. Hays, 305 W. College  
103 S. Forest

2.bdrm-310, 318, 810 W Cherry  
405 S Ash, 106, 408 S Forest,  
308 W College, 321 W Walnut

2.bdrm-305 W College,  
408, 324, 319 W Walnut

Rental List at 310 W Cherry  
518-4808 (10am-5pm) No Pet  
www.alpharentals.net

CHARMING 2 BEDROOM HOUSE  
near SIU, w/d, nice yard, off street  
parking available, 457-4422.  
www.alpharentals.net

**Mobile Homes**

LOW COST RENTALS, \$250 & up.  
pets ok. 444-4444.  
CHUCKSRENTAL.COM

HOUSE 1 & 2 BDRM, \$225-\$300.  
LAWN & trash incl, agent & maint on  
site, email now, 549-8000, no dogs,  
www.universityheightrentals.com

CLEAN AFFORDABLE MOBILE  
home, single and double occupancy  
only, email Jan 2011, SIU bus route,  
no pets, 549-1820.

MAJUBI VILLAGE 2 BDRM mobile  
home, \$250-\$500/mo, no dogs, call  
Tracy 529-4301.

MODERN, 1200 SQ FOOT 2 bdrm,  
2 bath, w/d, d/w, a/c, energy effec.  
(818)824-0533.  
www.comptonrentals.net

1 & 2 BDRM HOMES, \$245-350/mo,  
no pets, 924-0533,  
www.comptonrentals.net

NEWLY RELOCATED 1, 2 & 3  
BDRM, water, trash, & lawn incl, lg  
shaded lots, starting at \$300/mo,  
call 549-4713, www.grentals.com

**Help Wanted**

CDale Public Library is seeking a  
shofer, 15-18 hrs weekly, min  
wage, nights & weekends. Apply at  
405 W. Main, 457-0354

BARTENDERS, WILL TRASH, A/c,  
energetic, personality, Great Tips  
& Salary Johnston City only 20 min  
from CDale, 962-9402 or 622-0600.

Earn \$1000-\$1200 a month, to drive  
our brand new cars, with ads placed  
on them, www.AcCarDriver.com.

LOCAL HOME CENTER is seeking a  
part-time lumber yard employee to  
join our team. Duties include: load-  
ing and delivering materials to job  
sites, unloading and stacking materi-  
als delivered to our yard, providing  
outstanding customer service, work-  
ing well with others, and helping  
keep our yard organized and clean.  
CDL license a plus but not a neces-  
sity. If you are dependable, self-mo-  
tivated, capable of lifting and carry-  
ing heavy materials, and a hard-  
worker, apply in person to Tony at  
Wright Do-It Center, 208 S. Walden  
St., Murphysboro.

HELP WANTED PREPARING IT-  
ban Style Highchick, seeking PT,  
bartenders, waitresses, & security  
staff, for Thursday, Friday, & Satur-  
day nights, positions require 1500  
hrs per week, exp not necessary but  
a plus, will train, EOE. Please call  
618-694-7786 for more detail info.

BARTENDING, UP TO \$300/DAY,  
no exp necessary, training provided,  
800-945-8320, ext 102.

**Services Offered**

HANDYMAN SERVICES, PAINT-  
ING, yard work, home repairs,  
618-525-0260.

1/2 off January special  
19 pt Pent  
only \$1.00 per day  
(excludes food & drink)

**Want Your Business to Grow?**

Advertisel  
Call  
618-536-3311  
ext 237  
For Space

**GTL**

**WE'VE GOT YOUR LIVING SITUATION COVERED.**

RESERVE  
618-529-3500  
NOW leasing for Fall 2011!

**Anything But Ordinary**

Now Leasing For  
August 2011

2 & 3 bedrooms with walk-in closets and tons of windows  
Custom furniture package including queen size beds  
Wireless internet everywhere  
Plenty of study space  
24 hour a day clubhouse, workout when you want

Need a place to stay sooner?

We have what you need, call or stop by for more details.

Pointe-siu.com 900 E. Park St, Carbondale  
618-529-6444

THE POINTE

**NEED A GREAT HOME FOR YOU & YOUR FRIENDS?**

**Tour Alpha's Places Today!**

1, 2, 3, or 4 Bedroom • Multiple Floorplans • Pets Considered  
Energy Efficient • In Unit Washer/Dryer • Various Locations  
Free Parking • Dishwasher • NO APPLICATION FEE

Visit Our Website For Virtual Tours And Applications  
457-8194 (office) www.alpharentals.net 457-4281 (fax)

**This could be your next home!** **Aspen Court Apartments**

**Townhouses Available for Fall 2011**  
4 bedroom / 4 bathroom  
We also have 1, 2, and 3 bedroom apartments!

www.aspencourthomes.com • 1101 N. Grand Ave • 618-594-5000

**BARGAIN PRICES**

**TOP CARBONDALE LOCATIONS**  
City Inspected and Approved.  
Lists of addresses in front yard of 408 S. Popular, Carbondale. Reasonable Rents.

**APARTMENTS**  
(include water & trash)

<b>1 BEDROOM</b> 608 N. Bridge St. (Duplex) #1, #2 806/2 W. Bridge St. (Triplex) #3, #4, #5 805 W. Main St. #1, #6	<b>1 BEDROOM</b> 905 W. Sycamore #1, #2 423 W. Monroe #1 (W/D on site)	<b>1 BEDROOM</b> (duplex) 805 W. Main #2 - #5 423 W. Monroe #2-#6 (W/D on site)	<b>2 BEDROOM</b> 905 W. Sycamore #3, #4 310 S. Springfield #3
---	---	--	---

**GEODESIC DOME** 211 S. Friedline Dr. Near SIU Credit Union West

**LUXURY EFFICIENCIES** 408 S. Popular #1 - #8 Near Campus (W/D on site)

**HOUSES all with W/D & FREE Mow**

<b>2 BEDROOM</b> 804 N. Bridge St. 804 N. Bridge St. 502 N. Davis 505 N. Davis 100 S. Dixon 309 S. Oakland 311 S. Oakland 313 S. Oakland 401 S. Oakland 1st garage 1307 Old W. Main 806 W. Schwartz	<b>2 BEDROOM</b> 904 W. Sycamore 905 W. Sycamore 905 W. Sycamore <b>2 or 3 BEDROOM</b> 811 W. Sycamore 309, 400, 402, 403, 404, 405, 407 & 409 S. James 100 S. Dixon 1st bed & garage	<b>3 BEDROOM</b> (duplex) 803 W. Schwartz 02 beds, w/d, deck 607 W. Cherry 315 S. Oakland 503 N. Oakland 109 S. Dixon 319 S. Forest 401 S. Forest (bed/desk) 423 W. Sycamore 424 W. Sycamore 513 N. Davis	<b>4 BEDROOM</b> 410 S. Forest (1st floor) 308 S. James 506 W. Cherry (1st floor) 910 W. Mill (1st floor) 403 S. Oakland (1st floor) 1701 W. Sycamore 421 W. Monroe 1st floor, 1st bath 505 S. Forest 1st floor, 1st bath, 1st deck 804 W. Schwartz (1st floor)
---	---	--	--

**CARBONDALE AREA - NO ZONING - (7-10 MINUTES FROM SIUC)**  
1 Bedroom Apts. under \$300/mo. • 2 Bedroom Apts. under \$400/mo.  
2 Bedroom Houses (W/D, carpets & patios) • 3 Bedroom Houses (W/D, most with C/A,  
1 plus bath, huge decks & carports)

**TOP MURPHYSBORO LOCATION**  
56 Crescent Dr. - Luxurious 3 Bedroom House (W/D, C/A, 1<sup>st</sup> bath, garage & patio)

**NO PETS (618) 684-4145** **CENTRAL AIR**

# The Best Rentals in Town

## Available Fall 2011

www.carbondalerealty.com

www.carbondalerealty.com

### One Bedroom

- 607 1/2 N. Allyn
- 616 1/2 N. Allyn
- 504 S. Ash 4,5
- 507 S. Ash 1-14
- 508 S. Ash 2,3
- 509 S. Ash 2, 3 & 5-26
- 507 W. Baird
- 504 S. Beveridge
- 512 S. Beveridge 8
- 514 S. Beveridge 8
- 504 E. Vermont
- 602 N. Carico
- 608 1/2 W. Cherry
- 404 W. Cherry Court
- 405 W. Cherry Court
- 406 W. Cherry Court
- 407 W. Cherry Court
- 408 W. Cherry Court
- 409 W. Cherry Court
- 410 W. Cherry Court
- 201 W. College 1-3
- 310 E. College 1
- 403 W. Elm 1-4
- 718 S. Forest 1-3
- 605 W. Freeman 3
- 507 S. Hays 2
- 509 1/2 S. Hays
- 208 W. Hospital #1
- 703 S. Illinois
- 101,102,201,202,203
- 612 S. Logan
- 507 1/2 W. Main A & B
- 400 W. Oak 3
- 410 W. Oak 1-5
- 202 N. Poplar 2,3
- 507 S. Poplar 2
- 301 N. Springer 1-4
- 414 W. Sycamore E,W
- 404 1/2 S. University
- 406 S. University 1-4
- 606 1/2 S. University
- 334 W. Walnut 1,2
- 602 W. Walnut
- 705 W. Walnut 1,2
- 400 S. Washington A,B,C

- 602 N. Carico
- 604 N. Carico
- 720 N. Carico
- 908 N. Carico
- 911 N. Carico
- 205 W. Cherry
- 306 W. Cherry
- 311 W. Cherry 2
- 614 W. Cherry
- 404 W. Cherry Court
- 405 W. Cherry Court
- 406 W. Cherry Court
- 407 W. Cherry Court
- 408 W. Cherry Court
- 409 W. Cherry Court
- 410 W. Cherry Court
- 406 W. Chestnut
- 408 W. Chestnut
- 310 E. College 2-4
- 1201 W. College
- 201 W. College 1-3
- 309 W. College 1-5
- 310 W. College 1-4
- 400 W. College 1-5
- 401 W. College 1-7
- 407 W. College 1-5
- 409 W. College 1-5
- 501 W. College 1-6
- 503 W. College 1-6
- 507 W. College 1-6
- 509 W. College 1-6
- 710 W. College 1-6
- 303 W. Elm
- 115 S. Forest
- 120 S. Forest
- 303 S. Forest
- 716 S. Forest
- 718 S. Forest 3
- 500 W. Freeman 1-6
- 605 W. Freeman 2
- 109 Glenview
- 520 S. Graham
- 507 S. Hays 2
- 514 S. Hays
- 402 E. Hester 1-3, 5 & 7
- 408 E. Hester 1-7
- 703 W. High E & W
- 208 W. Hospital 1
- 703 S. Illinois 202, 203
- 401 S. James
- 705 N. James
- 815 N. James
- 611 W. Kenicott
- 903 W. Linden
- 515 S. Logan
- 612 S. Logan
- 507 1/2 W. Main B
- 207 S. Maple
- 908 W. McDaniel
- 300 W. Mill 1-4
- 400 W. Oak 1
- 400 W. Oak 3
- 402 W. Oak E & W
- 501 W. Oak
- 507 W. Oak
- 300 N. Oakland
- 505 N. Oakland

- 511 N. Oakland
- 514 N. Oakland
- 600 N. Oakland
- 602 N. Oakland
- 613 W. Owens
- 1305 E. Park Lane
- 202 N. Poplar #1
- 507 S. Poplar 3-8
- 301 N. Springer 1-4
- 1619 W. Sycamore
- 1710 W. Sycamore
- 919 W. Sycamore
- 404 S. University N & S
- 404 1/2 S. University
- 408 S. University
- 1130 W. Walkup
- 334 W. Walnut #3
- 402 1/2 W. Walnut
- 504 W. Walnut
- 820 W. Walnut #2
- 1004 W. Walkup
- 400 S. Washington A,B,C
- 600 S. Washington 1-9
- 404 W. Willow
- 406 W. Willow
- 804 W. Willow

### Three Bedroom

- 503 N. Allyn
- 607 N. Allyn
- 609 N. Allyn
- 408 S. Ash
- 410 S. Ash
- 504 S. Ash 2, 3
- 506 S. Ash
- 514 S. Ash 1, 3-6
- 407 S. Beveridge
- 409 S. Beveridge
- 501 S. Beveridge
- 502 S. Beveridge 1
- 503 S. Beveridge
- 506 S. Beveridge
- 507 S. Beveridge 1-5
- 509 S. Beveridge 1-5
- 513 S. Beveridge 1-5
- 515 S. Beveridge 1-5
- 508 N. Carico
- 510 N. Carico
- 604 N. Carico
- 205 W. Cherry
- 209 W. Cherry
- 309 W. Cherry
- 311 W. Cherry 1
- 405 W. Cherry
- 407 W. Cherry
- 501 W. Cherry
- 503 W. Cherry
- 606 W. Cherry
- 612 W. Cherry
- 614 W. Cherry
- 405 W. Cherry Court
- 406 W. Cherry Court
- 407 W. Cherry Court
- 408 W. Cherry Court
- 409 W. Cherry Court
- 406 W. Chestnut

- 408 W. Chestnut
- 1201 W. College
- 300 E. College\*
- 303 W. College
- 309 W. College 1-5
- 312 W. College 3
- 400 W. College 1-5
- 401 W. College 1-4
- 407 W. College 1-5
- 409 W. College 1-5
- 501 W. College 1-3
- 503 W. College 1-3
- 507 W. College 1-3
- 509 W. College 1-3
- 710 W. College 1-3
- 807 W. College
- 809 W. College
- 810 W. College
- 301 E. Crestview
- 104 S. Forest
- 115 S. Forest
- 120 S. Forest
- 303 S. Forest
- 603 S. Forest
- 716 S. Forest
- 605 W. Freeman 1
- 607 W. Freeman
- 109 S. Glenview
- 500 S. Hays
- 503 S. Hays
- 507 S. Hays 1
- 509 S. Hays
- 511 S. Hays
- 514 S. Hays
- 208 W. Hospital 2
- 212 W. Hospital
- 401 S. James
- 815 N. James
- 611 W. Kenicott
- 903 W. Linden
- 515 S. Logan
- 610 S. Logan
- 614 S. Logan
- 407 W. Monroe 1&2
- 417 W. Monroe
- 400 W. Oak 1, 2
- 402 W. Oak E, W
- 408 W. Oak
- 501 W. Oak
- 505 N. Oakland
- 511 N. Oakland
- 514 N. Oakland
- 600 N. Oakland
- 602 N. Oakland
- 617 W. Owens
- 1305 E. Park

See Our Show Apartment!

507 S. Beveridge #5  
 Monday thru Friday  
 9:00am to 5:00pm  
 Saturday  
 10:00am to 1:00 pm

Pick up Folder & List  
 Feb 1st

\*Available now

529-1082 • 206 W. College Suite 11 • Carbondale



# Study Break

Served up by: **FAT FREE PATTIES**

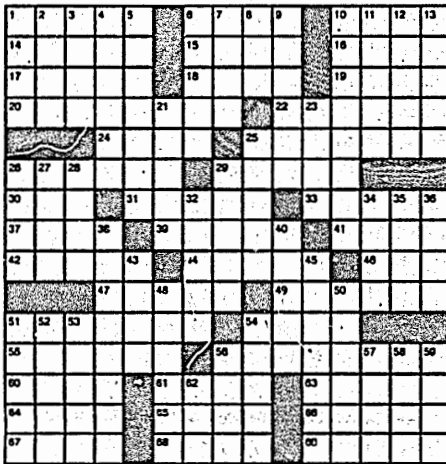
Free Delivery on Orders over \$15

618-529-FATP (3287) • 611 S. Illinois Ave. Carbondale

# Crossword

## THE Daily Commuter Puzzle by Jacqueline E. Mathews

- ACROSS**
- Snoozed
  - Fellow
  - Lunch spot
  - \_\_\_ over; remain flustering above
  - Invisible emanation
  - Foreboding sign
  - "Aida" or "Cammen"
  - Tennis court dividers
  - Period before Easter
  - Keeps trying
  - Stupor
  - Mishmash
  - One who starts an institution
  - \_\_\_ over; flipped
  - Rowed
  - \_\_\_ for the road; extra drink
  - Respond to a stimulus
  - Amounts owed
  - Evergreen tree
  - Great fear
  - Not phony
  - Gem
  - Bundled hay
  - Tavern drink
  - African nation
  - Arrested
  - Counselor
  - Harbor bird
  - Controlled; bridled
  - Church of England member
  - Capable
  - Italy's dollar before the euro
  - Steer clear of
  - Liver secretion
  - Charitable donation
  - Transmits
  - Night twinkler
  - Fit snugly together
  - Lock of hair



- Easy gait
- Always
- Human being
- Mobile home
- Major division of a long poem
- Colors
- Mr. Linkletter
- Parish leader
- Kitchen sieve
- Improve
- Chain-link barrier
- Go into
- One-\_\_\_ unilateral
- Regretted
- Doady
- Surpasses
- College credit
- City in Nevada
- Pacific \_\_\_
- Shelter of vines
- Outscore
- Story
- Luge vehicle
- Train driver
- Got rid of ants and roaches
- Relaxation
- Least interesting
- Chaos
- Tiny, thin slice
- Saudis, e.g.
- Left-hand ledger entry
- Country estate
- Grind the teeth
- Upper limbs
- Walking stick
- \_\_\_ together; combines \_\_\_
- Scottish monster's lake
- Suffix for text or percent

### Thursday's Puzzle Solved



© 2011 Tribune Media Services, Inc. All Rights Reserved.

## Horoscopes

By Nancy Black and Stephanie Clement

**Today's Birthday** — The squeaky wheel gets the grease, they say. You don't need to be obnoxious, but do make yourself heard. You're a contribution to your community, and to the planet. Speak up in service of others who may be can't utter the words. They're grateful for this. Did you ever consider a career in public service?

**Aries (March 21-April 19)** — Today is a 6 — Take a vacation, even if only for a few hours. Your friends will want to come along, lured by your optimism. Take them and explore something new.

**Taurus (April 20-May 20)** — Today is a 7 — State your own position clearly and logically. Others are open to suggestions and very willing to work with you. Look at the project from all sides.

**Gemini (May 21-June 21)** — Today is a 9 — Everything seems to be flowing with great ease. Your previous structure provides for intelligent action. Others participate with enthusiasm.

**Cancer (June 22-July 22)** — Today is an 8 — Someone experiences high drama around money and work. Stick to your ethics and values, and avoid all gossip. Then offer creative support.

**Leo (July 23-Aug. 22)** — Today is a 9 — Creative ideas come together today, and you hold the key to a logical conclusion. Write up results carefully. This presentation makes a huge difference in the long run.

**Virgo (Aug. 23-Sept. 22)** — Today is a 6 — You'd love to get a project finished today. Get everyone in the group busy early. They need your help to make things work. Then it all comes together.

**Libra (Sept. 23-Oct. 22)** — Today is a 6 — Today's activities weave together into a package full of love and optimism. Others understand your motives clearly and support you. Enjoy the partnership.

**Scorpio (Oct. 23-Nov. 21)** — Today is a 9 — It's time to focus on the business at hand. Everything gets done without much pressure. Reward yourself later with great food and a movie.

**Sagittarius (Nov. 22-Dec. 21)** — Today is a 7 — Creativity is the name of the game today. Stay focused to accomplish your goals. Others provide total support and lend an active hand.

**Capricorn (Dec. 22-Jan. 19)** — Today is a 9 — Although today's efforts feel personal, the results affect family and friends equally. Use your physical and emotional energy carefully.

**Aquarius (Jan. 20-Feb. 18)** — Today is a 9 — Gather everyone together early to sync plans. Then everyone goes in separate directions, and you gather up later to compare notes.

**Pisces (Feb. 19-March 20)** — Today is a 7 — Follow your intuition to discover the magic within your group's potential. Get yourself moving to discover something new about what makes you tick.

## JUMBLE

THAT SCRAMBLED WORD GAME by Mike Argirion and Jeff Knurek

Unscramble these four Jumbles, one letter to each square, to form four ordinary words.

**VEFER**

**YIRNB**

**EPPUK**

**DAYMAL**



Now arrange the circled letters to form the surprise answer, as suggested by the above cartoon.

Answer here: "           "

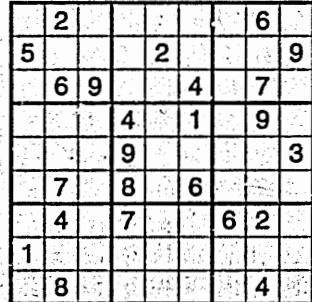
THURSDAY'S ANSWERS: ANISE WAGER MEMOIR JANGLE  
 What she wanted to get for her mother — A SON-IN-LAW

# SUDOKU

THE SAMURAI OF PUZZLES By The Mephram Group

Level: 1 2 3 4

Complete the grid so each row, column and 3-by-3 box (in bold borders) contains every digit 1 to 9. For strategies on how to solve Sudoku, visit [www.sudoku.org.uk](http://www.sudoku.org.uk).



### THURSDAY'S ANSWERS

9	5	2	7	6	3	4	8	1
1	6	7	8	9	4	3	2	5
3	8	4	5	1	2	9	7	6
8	7	1	4	3	6	5	9	2
6	4	3	9	2	5	7	1	8
2	9	5	1	7	8	5	3	4
7	2	9	6	5	1	8	4	3
5	3	3	2	4	9	1	6	7
4	1	6	3	8	7	2	5	9



# SIU looks to ace Evansville for second time this season

**JUSTIN KABBEES**  
Daily Egyptian

The SIU men's basketball team will head to Evansville just 11 days after beating the Purple Aces 67-55 Jan. 18 in Carbondale.

The Salukis (10-11, 4-6 Missouri Valley Conference) have lost both of their games since their last meeting with the Purple Aces (11-9, 5-5 MVC).

The first loss was to Illinois State, who is second to last in the conference and came into the game on an eight-game losing streak. Had the Salukis won that game, it would have been the Redbirds' worst conference-season start in school history. Instead, they are now on a two-game win streak.

In the team's last meeting, the Salukis held the Purple Aces' leading scorer, Colt Ryan, to only six points. Ryan has averaged only 6.3 points per game in the last three games and shot a new season-low Wednesday against Indiana State with just two points.

Evansville relied on center Peter van Tongeren, who was averaging 6.4 points per game, to pick up

**"We have to play extremely hard in this league each and every night to have a chance. Our margin for error isn't as big as some of the teams we're going to play."**

— Marty Simmons  
Evansville head coach

Ryan's slack with an 18-point performance Jan 18.

Coach Chris Lowery is 11-3 all-time against Evansville, but all of his losses have been at Roberts Stadium. SIU is 7-1 in its last eight games against the Purple Aces.

Lowery has criticized the guards this season for their inconsistent performance, but senior forward Carlton Fay, sophomore center Gene Teague and junior forward Mamadou Seck have produced 37 double-figure scoring games. All three average double-figure scoring. However, none of the team's seven guards average double figures and have combined for 17 double-figure scoring games.

The guard play has led to nine different starting lineups this season, and Seck said the team needs to get out of its slump.

"I think as a team we need to

learn how to end the game and when it's time to do it," Seck said.

The 6-foot-7, 205-pound junior leads the MVC in rebounds with eight per game and also leads the team with five double-doubles.

Evansville head coach Marty Simmons said winning games isn't as easy as the conference season continues.

"We have to play extremely hard in this league each and every night to have a chance," Simmons said during his weekly teleconference. "Our margin for error isn't as big as some of the teams we're going to play."

The Salukis will play at 7:05 p.m. Saturday at Roberts Stadium in Evansville, Ind.

Justin Kabbees can be reached at [jkabbes@dailyegyptian.com](mailto:jkabbes@dailyegyptian.com) or 536-3311 ext. 256.

## SWIM

CONTINUED FROM 12

Walker said he looks to his veteran swimmers and divers to help newcomers adjust to the fast pace of the season and wants the entire swimming and diving staff to pull the team together.

"The leadership that the guys have taken has been a great improvement," he said. "Just because you're not a

captain doesn't mean you can't lead."

Western Kentucky is ranked just one spot ahead of SIU in the mid major conference. The Salukis have a long-standing history with the Hilltoppers; they have competed against each other before in the Sun Belt conference.

"We have a long history with them since we used to compete against them in the same conference," Walker said. "They're

very good men and women."

The Salukis will have one last chance after this meet to prepare for the final Missouri Valley Conference and Mid-American Conference meet Feb. 5 against the University of Evansville.

Jacqueline Muhammad can be reached at [jmuhammad@dailyegyptian.com](mailto:jmuhammad@dailyegyptian.com) or 536-3311 ext. 269.

### HELP WANTED

The Daily Egyptian is currently seeking motivated individuals for the following positions:

- Copy Editors
- Writers
- Designers
- Cartoonists
- Ad Production
- Classifieds
- Sales Representative
- Office Assistant

Applications available at the front desk in Rm. 1250 Communications Building. Applicants must have a minimum of 9 credit hours to be considered for positions.

Questions? Please call (618) 536-3311

**Blue Sky** (Husband - No excuse We have been)

**Saturday Music Event** 1/29  
Free Music Both Days 12-5pm  
Calex (Alternative/Acoustic)

**Sunday In The Park** 1/30  
Concordia (Harmonizing Trio)

January White Sale - All White Wine 10% off per bottle 25% off per case

**UPCOMING EVENT**

Valentine's Day Annual Gourmet Dinner | Valentine's Day Basket  
Sat. 2/12 - Reservations Required • \$125 Couple (Delivered to Office, Home or Anywhere)  
Caters by Catering - Ask for Calex - Call For Info within a 25 mile radius of the University

## D.E. Daily Bark

Chicago Bulls point guard Derrick Rose spent Wednesday undergoing a procedure for two stomach ulcers. He wasn't at practice Wednesday and reports say he might not be at the game today against the Orlando Magic. Do you think the Bulls can beat Orlando without their leading MVP candidate?

No. I love the Bulls, but Rose just brings too much to the table for them to win without him.

JACQUELINE MUHAMMAD  
[jmuhammad@dailyegyptian.com](mailto:jmuhammad@dailyegyptian.com)

That's like asking "Will a car run without its engine?" Considering the teams have very similar records and Rose is part of the reason for the Bulls' record, I'd have to say that the Bulls will lose.

AUSTIN FLYNN  
[aflynn@dailyegyptian.com](mailto:aflynn@dailyegyptian.com)

If Rose is gone, what do Chicago sports fans have left?  
Answer: nothing.

JUSTIN KABBEES  
[jkabbes@dailyegyptian.com](mailto:jkabbes@dailyegyptian.com)

**PINCH PENNY PUB & GARDEN** **Copper Dragon**

WWW.PINCHPENNYPUB.COM

**FRIDAY**

**DOT DOT DOT**

DOORS OPEN AT 10PM

**\$1.50 SATURDAY OPEN AT 10AM**

CORONA & CORONA LIGHT

**WALKER BAR**



BANTER

## Can Bulls beat Magic without Derrick Rose?

### SWIMMING & DIVING

# Salukis gear up for battle at Western Kentucky

JACQUELINE MUHAMMAD  
Daily Egyptian

The SIU men's and women's swimming and diving teams head to Western Kentucky to face the Hilltoppers for another conference meet Saturday, which will be one of the final meets before the conference championships.

Throughout the season, both teams have trained hard and treated each meet as a way to prepare for conference championships, coach Rick Walker said.

Sophomore swimmer Jessica Anderson said with the consecutive days of competition, members of the team look to one another for motivation.

"A big difference between swimming and a lot of other sports is that our competitions last for such a long period of time, but that's where the team aspect comes in," Anderson said. "We rely on our teammates to be there for us, keep the energy levels up and keep everyone motivated."

The Saluki women have an overall record of 4-4, and the men are now 5-2 and have won three straight dual meets.

Junior swimmer Jared Bradd said



Sophomore swimmer Jessica Anderson takes a break between sets during practice Thursday at the Edward J. Shea Natatorium.

The Saluki swimmers travel Saturday to Bowling Green, Ky., to face the Western Kentucky Hilltoppers.

GEORGE LAMBOLEY | DAILY EGYPTIAN

the team worked to reach the point where they are in top form by the time conference meets begin.

"With each meet we try to increase our intensity as we prepare for

conference, just making sure the quality of the swimming is there," Bradd said.

As the team prepares to finish the season on a good note, it is key that each member of the team helps one

another out, Bradd said.

"One of our biggest things this season is just trying to get the team to work together, as a group going into conference, one of the biggest

things we're looking for is team unity," said Bradd.

Please see SWIM | 11

### WOMEN'S BASKETBALL

# Salukis still struggle with turnovers against Illinois State

AUSTIN FLYNN  
Daily Egyptian

For the fourth consecutive game, the SIU women's basketball team had 30 or more turnovers as they fell to Illinois State at home 82-44.

The Salukis (2-17, 0-8 Missouri Valley Conference) showed promise early and stayed with the Redbirds (13-6, 5-3 MVC), trailing by only four points nearly halfway through the first.

However, much like the game Sunday against Northern Iowa, the team started to make turnovers and the Redbirds pulled ahead.

"For the first 10 minutes of the game I thought we competed pretty well, and I can pinpoint the possession where the wheels fell off," coach Missy Tiber said.

Tiber said that possession involved a loose ball that Illinois State picked up and scored. The Redbirds then went on a 18-4 run to extend their lead to 29-11 with four minutes left in the half.

The Salukis made a couple of small runs in the second half, but an additional 13 turnovers kept them from making a comeback.

Illinois State capitalized on SIU's mistakes with 38 points off of turnovers, which was also the Redbirds' margin of victory.

On "Youth Day," where area elementary schools came to watch,

**66** For the first 10 minutes of the game I thought we competed pretty well, and I can pinpoint the possession where the wheels fell off.

— Missy Tiber  
coach

the game, the Redbirds started four seniors and a junior, whereas SIU had three freshmen, one sophomore and a senior.

Tiber said that she hates to use the fact that the Salukis are a young team as an excuse, but it does make a difference.

"I think they're really young, and ... I think that a team is subject to turning a ball over in a situation such as this," Illinois State coach Stephanie Glance said.

The Salukis did bring some experience back as sophomore guard Teri Oliver returned from a three-game suspension for a violation of team rules.

Oliver led the team in points in the first half with eight and finished the game with 10 points and four rebounds.

While Oliver did have a good effort in her first game back, she said she was more concerned with the Salukis' performance as a whole.

"I'm not really concerned about how many points I had, how many



EDYTA BRASZCZYK | DAILY EGYPTIAN

Sophomore guard Teri Oliver blocks Illinois State guard Katile Broadway on Thursday in the second half of SIU's 82-44 loss at the SIU Arena. The Salukis will play Indiana State at 2:05 p.m. Saturday at home.

rebounds. I mean, fact of the matter is we lost by a lot and we shouldn't have," she said.

Renee Reed came on strong in the second half with three 3-pointers and 13 points.

Reed echoed Oliver's thoughts and said she was disappointed by the team's performance.

"It's the same as Teri said, we're looking to score, but at the same time we're trying to win too," Reed said.

Freshman center CICI Shannon also had six blocks in the game, which was only one short of the team record of seven and was her third six-block game of the season.

Overall, Tiber said she has tried to

remain confident in her team's ability to play well.

"This team is very sensitive, and we've just got to be real confident with them. They're young," Tiber said.

SIU will host the Indiana State Sycamores at 2:05 p.m. Saturday at the SIU Arena for "Pack The House Day."