

2-26-1952

## The Egyptian, February 26, 1952

Egyptian Staff

Follow this and additional works at: [http://opensiuc.lib.siu.edu/de\\_February1952](http://opensiuc.lib.siu.edu/de_February1952)

Volume 33

---

### Recommended Citation

Egyptian Staff, "The Egyptian, February 26, 1952" (1952). *February 1952*. Paper 2.  
[http://opensiuc.lib.siu.edu/de\\_February1952/2](http://opensiuc.lib.siu.edu/de_February1952/2)

This Article is brought to you for free and open access by the Daily Egyptian 1952 at OpenSIUC. It has been accepted for inclusion in February 1952 by an authorized administrator of OpenSIUC. For more information, please contact [opensiuc@lib.siu.edu](mailto:opensiuc@lib.siu.edu).

# THE Egyptian

SOUTHERN ILLINOIS UNIVERSITY

Feb. 26, 1952 \* Vol. 33, No. 24 \* Single Copy 5c

## To Poll Students On Semester Plan for SIU

During spring term registration, which is to be held March 17, all students will have an opportunity to voice their opinions on whether Southern should adopt the semester plan. A questionnaire will be circulated to students at that time by the Student Council.

Representatives from the University Council contacted the Student Council recently asking for an opinion from students on the subject of the adoption of the semester plan here at SIU.

The Student Council thought all students should be given the opportunity to voice their opinion on the issue, thus the purpose for conducting the poll.

The Student Council committee which set up the questionnaire has listed several arguments for and against the adoption of the semester plan as follows.

### ARGUMENTS FOR THE SEMESTER PLAN:

1. Time spent in registration and on final examinations is less, since both occasions would be held only twice in a regular school year in place of three times in a year.
2. There would be less confusion in subject matter since courses would not be started and stopped as often.
3. In those cases in which the present four or five hour courses are changed to three semester hours, the student will have more time to get a better grasp of the same subject material.
4. It provides a student teaching plan which is more in co-ordination with elementary and secondary schools, which are on the semester basis.
5. It allows more time for students to meet requirements within the course, such as term papers, observations, reports, etc.
6. Most colleges and universities are on the semester basis, thus transfer to another college or university.

(continued on page 2)

## Pan-Hellenic Council Sponsors Open House

The Pan-Hellenic council, consisting of representatives from Alpha Kappa Alpha, Delta Sigma Epsilon, Pi Kappa Sigma, and Sigma Sigma Sororities, was hostess at an Open House party for all girls at the Student Center last Wednesday.

Decorations were centered around a George Washington theme with a silver cherry tree as the centerpiece.

Marilyn Watson, Sigma Sigma Sigma, was the mistress of ceremonies for the program. Shirley Mathis played a marimba solo accompanied by her mother. Mona Williams and Nan Van Matre played several piano selections. Sigma Sigma Sigma members presented a skit and Anita Early gave a humorous reading.

Miss Eleanor Taft is the faculty sponsor of the Pan-Hellenic Council, and Delores Hamp, Delta Sigma Epsilon, is the president.

## To Hold Meeting On Nursing Opportunities

A special meeting on "Opportunities in Nursing Education" which will be open to all women students will be held Thursday, Feb. 28, at 3 p.m. in Parkinson 203. The Office of Student Affairs has particularly urged all women interested in nursing education to attend the meeting.

President D. W. Morris and Miss Hester Johnson, director of nursing education here at SIU, will be the speakers.

## Mountain And Murphy Have Top Scores In Bridge Tournament

SIU winners in the National Intercollegiate Bridge tournament play-offs held at the Student Center last week are Jane Mountain, senior from Benton, and Richard Murphy, senior from Mt. Vernon. William Rogge, faculty adviser for the tournament, from the Student Affairs office, and Grace Fulkerson, senior from Carbondale and tournament director, supervised the play-offs, in which eight contestants participated.

**SCORES AND PLAY** of all participants have been mailed to the tournament committee to be judged by Geoffrey Mott-Smith, recognized authority on bridge.

If the SIU winners should be one of the two high-ranking pairs for the Great Lakes zone, which includes colleges of Indiana, Illinois, Michigan, and Wisconsin, they will go to the final rounds to be held at the Blackstone hotel in Chicago April 18 and 19.

Last night's Community Concert was postponed due to the illness of the pianist, Rudolf Serkin. The Columbus Boys choir will present the next concert March 17.

## It Soon Will Happen . . .

- Tuesday, Feb. 26—Theta Xi Variety show dress rehearsal, 7 to 9:15 p.m., Little Theatre and auditorium.
- Flying Club meeting, 7 p.m., Parkinson 107
- Wednesday, Feb. 27—Theta Xi Variety Show, 8 p.m., auditorium
- Lenten Services, 6:45 to 7:30, Little Theatre, University School.
- Thursday, Feb. 28—Music department band concert, 8 p.m., auditorium.
- Sing and Swing meeting, 7 to 10 p.m., Little Theatre.
- Friday, Feb. 29—Freshman class Leap Year Dance, 8 to 11 p.m., women's gym.
- Monday, March 3—Southern Acres pot luck supper and town meeting, 6:30, Southern Acres' recreation hall.
- Tuesday, March 4—Beginning of final examination week.

## To Hold Leap Year Dance This Friday

"Chick's Chance," an all-school Leap Year dance, will be held this Friday, Feb. 29, in the women's gymnasium from 8 to 11 p.m.

This will be the first time in the history of Southern that the freshman class has sponsored such an all-school dance.

The girls are urged to carry through the dance procedures according to the committees' plans. Each girl is to call for and to escort her date to and from the dance. Corsages are to be presented to the boys. The girls have been requested by the committee to fashion the corsages in a unique and clever style, as a prize will be awarded to the outstanding design.

**DEXTER PEAK**, freshman, and his orchestra are to play for the dance. His band consists of two other SIU students, Claude Horsely and Bill Clarida. Others in the band are Frank Basso, Sever, and L. H. Henson, West Frankfort.

Preparations for the Irish-sponsored dance are being guided by members of the Social Senate. The four acting committees and their chairman are: publicity, Paul Morris; decorations, Wyona Smith; programs, Jean Davis; and concessions, Betty Conatser.

Tickets will be available today at a table in the cross halls of Old Main. Tickets are 75 cents a couple or 50 cents stag.

## Men's Residence Halls Hosts at Open House

The men's residence halls held open house last Thursday night, the theme for which was "Pioneering." Following tours through the halls by the visitors, entertainment was presented which consisted of jazz band music and a skit titled, "The Shooting of Dangerous Dan McGrew."

The band was made up of students Ellis Bick, Claude Horsely, Dexter Peak, Bill Clarida, and Lowell Kelly. The skit was put on by members of hall number four.

Athletic Director Glenn (Abe) Martin and his wife acted as chaperones for the Open House.

The interior of the lounges at the halls have been improved by the recent arrival of new lamps and drapes.

## 'I' CLUB TO INITIATE NEW MEMBERS TOMORROW

New members will be initiated into the "I" Club tomorrow night, 6:30 p.m., in Room 202 of the gymnasium. Each member is requested to attend this meeting.

## Mayor Proclaims Week In Honor of Variety Show

Mayor John I. Wright has officially proclaimed the week of Feb. 27 as "Theta Xi All-School Variety Show Week." Tomorrow night at 8 p.m. in Shryock auditorium the fifth annual Variety Show will be launched.

## Select 40 To Play For Winter Band Concert Thursday

A 40 piece band, directed by Phillip Olsson, SIU band instructor, will present the thirty-eighth annual winter concert this Thursday at 8 p.m., in Shryock auditorium.

The members of the band were selected from among 80 participants in the marching band at Southern. Each is experienced and has been carefully chosen by the band department.

Included in the evening's program will be the "George Washington Bridge," by William Schuman; "Tap Roots," by Frank Skinner; "Suite Francaise," by Darius Miller; "Newsreel," by Schumann; "Serenata" by LeRoy Anderson; and "Lincoln Portrait," by Aaron Copland.

**TOM SLOAN**, graduate student in speech, will narrate the "Lincoln Portrait," and Robert Resnick of the music department will conduct "Serenata."

Band members who will play at the concert include: Betty Williams, Boyd LeMarch, Judith Gurley, Delores Blondi, Joseph Smith, Mary Snow, Aldon Miller, Marene Rann, Kenneth Dean, LaDonne Deardmond, Jane Dunning, Robert Huffman, Albert Lockwood, Paul Randolph, Mary Richardson, Henry Watkins, William Bull, Stan Linder, Patricia Burks, Kenneth Mills.

Gene Stiman, William Clarida, Lowell Kelly, William Evans, Francis Willis, Ralph Albrecht, Lester Ross, Barbara Aber, Donald Melvin, Leah Bradley Sims, Richard Ward, Robert Jachino, Robert Hubbard, Dorothy Olds, Tom Sullins, William Green, Paul Wolters, Lois Bryant, Jack Gaal, and Joan Norovitch.

A percentage of the profits will be applied toward a television set for the Student Center.

Tryouts for the show were held Feb. 13 and 14. Approximately 20 of these acts will be in the spotlight tomorrow night. Rehearsals were begun last week and tonight will be the final practice before the show.

This show was started five years ago by the Kappa Delta Alpha fraternity, now Theta Xi, as an all-school presentation of campus talent. For the first time, however, a trophy will be awarded to best act sponsored by an organized house. The trophy must be won three times before it can be kept by the organization. An individual plaque will be given to each member of any individual act.

**LAST WEDNESDAY** a faculty committee chose the 10 finalists who will be presented at the close of the show. Yesterday each of the finalists had a speaker to speak in his behalf before the faculty committee. The 10 finalists are: women—Delores Hamp, Freda Gower, Wilma Beadle, Wilma Dummeier, and Virginia Miller; men—Doug Shepherd, Jim Thromorton, Lowell O'Daniell, Jim Schmulbach, and Al Tritanji.

Joe Harding, acting vice-president of Theta Xi, will serve as master of ceremonies of the show. Committee chairmen are, general chairman, Bob Mosher; finance, Carroll Cox; publicity, Joe Harding; awards, Al Tritanji; and Ed Brock, who is in charge of the fraternity act.

**AFTER THE SHOW** is presented at Southern, it will be taken to Harrisburg. Each year the show is presented some place off-campus.

Officers of the fraternity this year are: president, Al Tritanji; acting vice president, Joe Harding; secretary, Al Spizzo; and treasurer, Carroll Cox.

## Christian Foundation Plans Lenten Services

Beginning Feb. 27, the Student Christian Foundation is sponsoring a series of Wednesday night Lenten services. The services will be held in the University School Little Theatre every Wednesday evening from 6:45 to 7:30 p.m.

Theme of the services will be the Beatitudes of Jesus. Dr. Paul Hunsinger, speech instructor, is to be the speaker Feb. 27. He will speak on the first two Beatitudes. There will also be reading of the Passion story, congregational singing, and special music.

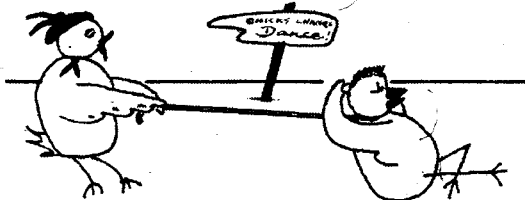
## Name Flying Club 'The Southern Eagles'

Southern's flying club was named "The Southern Eagles" at the club's last meeting. Officers for the newly organized club were also elected.

Officers are as follows: John Keller, president; Bob Picland, vice-president; and Earl Gum, secretary-treasurer.

Next meeting of the club will be held this evening at 7 o'clock in room Parkinson 107.

Students interested in joining the club may attend the meeting or contact any of the officers.



"This chick roped her man . . . How about YOU?"

Published semi-weekly during the school year, excepting holidays and exam weeks by students of Southern Illinois University, Carbondale, Ill. Entered as second class matter at the Carbondale post office under the Act of March 3, 1879.

Virginia Miller ..... editor-in-chief  
 Barbara Ames VonBehren ..... managing editor  
 Carol Henderson ..... business manager  
 Sherman Doolen ..... sports editor  
 Lyle Sledge ..... circulation manager  
 Tom Wiedemann ..... photographer  
 Dave Stahlberg ..... cartoonist  
 Miss Viola DuFrain ..... faculty fiscal sponsor  
 Donald R. Grubb ..... faculty editorial sponsor

Reporters—Gwen Applegate, Willard Dawson, Mary Jane Dodge, Sherman Doolen, Robert Duffy, James Fecho, Beverly Fox, Grace Fulkerson, Jim Glenn, Don Halloran, Doris Harrell, Helen Nance, Jack Nettland, Gene Penland, Bob Sergeant, David Stahlberg, Joyce Weece, Otis Weeks, Tom Wiedemann, and Teresa White.

## To Conduct Tour Through 14 States For SIU Geography Field Course

The department of geography and geology here at Southern will conduct its third annual field course in geography at the close of the summer term. Twenty-two days will be spent on a tour of 14 states.

The group will travel by bus leaving on Aug. 9, going first via Louisville and Cincinnati to Washington where students will attend some of the meetings of the International Geographical Congress which is meeting for the first time in the United States since 1904.

The group will then go south to Norfolk and Newport News. The return trip will be made via Raleigh, Ashville, Knoxville, Chattanooga, and Muscle Shoals, Ala., with a side trip to Birmingham.

Emphasis in the course will be placed on agricultural and industrial geography. Port and harbor

development and ocean shipping will be studied at Norfolk and Newport News. Considerable time will be spent in the analysis of the T.V.A. development as it relates to resources.

The iron and steel industry will be studied at Birmingham. Many large hydroelectric plants will be visited. The study of conservation and recreational and scenic geography will receive some emphasis.

**THE COURSE** is open to juniors, seniors, and graduate students who have had as a minimum requirement an introductory course in college geography. Five quarter hours of credit will be given to those who satisfactorily complete the course.

The cost of the course has been set at \$160. This amount will cover the registration fee, bus transportation, lodging, study materials, and tuition.

The trip will be conducted by Dr. Floyd F. Cunningham, chairman of the department of geography and geology. Those who are interested in taking the course should contact Dr. Cunningham for details at once.

### You Name It!

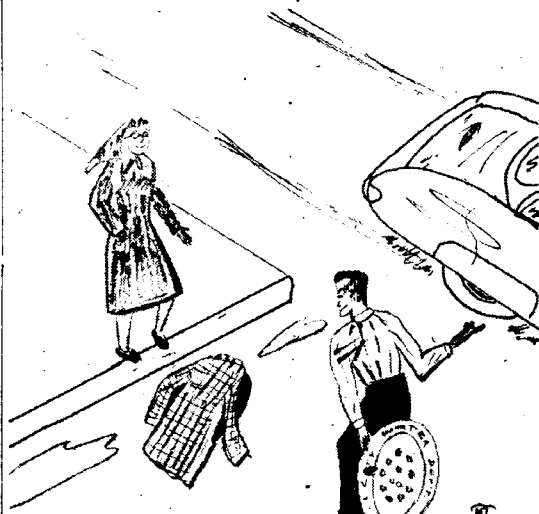


Answer to this week's close-up on page 4.

### Extension Division Plans Program Service

A new county teachers institute program service for Southern Illinois was announced today by the Southern Illinois University extension division. The University's education department is cooperating with the extension service in preparing the planned programs which are available to county school superintendents.

The first program will be given April 10 at Cave-in-Rock for the



"This chivalry isn't like you, Louie!"

### TO POLL STUDENTS . . .

(continued from page 1)

versity would be less difficult.

7. It would give a student a full year to prove his ability before or after he is placed on probation.

8. There would probably be very few five semester hour courses, thus few classes would meet every day in the week.

9. It would avoid the awkward situation of having the fall term final exams immediately after Thanksgiving vacation and the first two weeks of winter term just before the long Christmas vacation.

### ARGUMENTS FOR THE QUARTER PLAN:

1. It would be difficult to change credits, loads, class schedules, etc., to fit the semester plan.

2. The quarter system increases opportunity for rapid progress of students since they may graduate at three times during the regular school year in place of only twice.

3. The quarter system provides greater variety in subject matter and in instructors during the year.

4. The quarter system provides a better opportunity for students to change their majors.

5. Under the semester plan, there will be many more three than four and five hour courses, thus the average student will carry more courses at one time.

6. In the event that most courses will be three semester hour classes, scheduling difficulties may arise if some Saturday classes are

Hardin county spring teachers institute, according to Miss Doris Schwinn, assistant supervisor in the extension division, who schedules programs.

A specialist for each topic from the University education department helps plan the programs, and SIU personnel, as well as teachers from the area with particular qualifications in the desired field, are called upon to participate with lectures, demonstrations, or panel discussion.

Program fields in the order of preference are: approaches to remedial teaching; the exceptional child in the classroom; promoting motivation in the classroom; measurement of intelligence, achievement, aptitude, interest, and the interpretation of results; and the role of the school in character development.

### AGRICULTURE CLUB TO ELECT OFFICERS

Officers for spring term will be elected tonight at a regular meeting of the Agriculture club at 7 p.m. at 1311 South Thompson.

### BOOKSTORE CREDIT SALES DISCONTINUED FEB. 29

University bookstore credit sales under P. L. 346, 16 and Vocational Rehabilitation will be discontinued at the end of the eleventh week, Friday, Feb. 29, 1952, according to Carl Trobaugh, manager.

not scheduled.

7. It is easier for students to finance school for three months at a time rather than for four and a half months at once.

### Schedule Two Band Classes Spring Term

Two band classes are scheduled for the spring term according to Phillip Olsson, SIU band instructor.

One band group will meet at 9 a.m. every Monday and Wednesday. This class will be open to all interested in playing instruments in the school band.

Another class will meet at 4 p.m. Wednesdays. This will be a meeting of the concert band. Olsson has reported that all AF ROTC students, playing with the ROTC band, will meet with the regular four o'clock band class, and they will then be excused from the AF ROTC drill period, which is also scheduled at 4 p.m. Wednesdays.

### 410 Students from 63 Towns Commute to SIU

A total of 410 students from 63 towns are commuting to classes here at Southern, according to Mrs. Mabel Pulliam, director of housing.

One student commutes from Cisne, a distance of 95 miles from campus; another comes from Waltonville, 59 miles; and 25 students drive more than 80 miles round-trip daily.

The town with the largest number of commuters is Murphysboro with 63. Anna has 13; Carterville 20; Christopher 10; Cobden 10; Carbondale vicinity, 33; Eldorado 10; Elkhart 10; Harrisburg 19; Herrin 25; Marion 37; and West Frankfort 21.

Commuters include 294 men and 116 women.

### COMMERCIAL CLUB TO ELECT NEW OFFICERS TODAY

There will be a short meeting of the Commercial club in Barracks G6 Tuesday, Feb. 26, at 4 p.m. for the purpose of electing new officers and discussing future trips.

All members and prospective members are invited to attend.



## Arrow Bi-Way 4.50

with the amazing Arafold collar—complete comfort and perfect appearance... collar open ... or closed and worn with a tie.

Put on a tie for dress, go without for casual wear. Either way you'll have the absolute top in comfort, plus the last word in style—combined in one great shirt, the Bi-Way. Like all Arrow shirts, Bi-Way is Mitoga-cut for trim fit. "Sanforized"—labeled for permanent good looks.

**J. V. WALKER & SONS**

100 West Jackson

Phone 808

FOR ARROW UNIVERSITY STYLES



**DELTA SIGMA EPSILON** members and their dates at their winter formal held Feb. 16. Theme for the dance was "The Birth of the Blues." Music was provided by Floyd Mooreland and his orchestra.

### Music Recital Features Eight SIU Students

Southern's department of music presented a Student Recital in the little Théâtre last Wednesday night.

Those taking part in the recital were Betty Williams, pianist; Bill G. Gurley, mezzo-soprano; Bill Green, tuba; Paul Wolters, pianist; John Wharton, first violin; Kenneth Mills, viola; Everett Boyd, second violin; and Miss Eileen Barry, cello.

The program included the following: "Prelude and Fugue in F Major," by Bach; "Sonata in D Major, K.284, by Mozart; "Prepare thyself Zion," from Mother's Day oratorio, by Bach; "Fantasia," by J. S. Bach; "Ballade, Opus 10, No. 1," by Brahms; "String Quartet, Opus 7, No. 1," by Haydn.

### AT MILLER TO GIVE FOOD DEMONSTRATION

Pat Miller will give a food dem-

### Two Faculty Members To Make European Tour

Europe will be the destination for two Southern faculty members March 2 when they begin three-month sabbatical leaves.

Dr. Dorothy Davies, chairman of the department of physical education for women, and Miss Maxine Vogely, director of Anthony Hall, will make a travel tour of England, France, Italy, Switzerland, and other countries.

They will return to the campus June 1.

Ben P. Watkins, assistant professor of art, is already on sabbatical leave. He enrolled for this quarter at New York University, where he will work toward his doctorate in art history. He will return to the campus in the fall.

demonstration on pie making Thursday, Feb. 28, at 11 a.m. in room Main 110. The public is invited to attend the demonstration.

## Final Examination Schedule Reprinted

Following is the schedule for final examinations for the Winter Quarter as released from the Office of the Registrar.

### MONDAY, MARCH 3

English, 102—4 p.m.

### TUESDAY, MARCH 4

Eight o'clock classes—8 a.m.

Sociology 101—11 a.m.

12 o'clock classes—1:30 p.m.

Women's P. E. 102—3:30 p.m.

### WEDNESDAY, MARCH 5

Nine o'clock classes—8 a.m.

Government 101 and 231—11 a.m.

Two o'clock classes—1:30 p.m.

### THURSDAY, MARCH 6

Ten o'clock classes—8 a.m.

History 102, 201, and 202—11 a.m.

Two o'clock classes—1:30 p.m.

### FRIDAY, MARCH 7

11 o'clock classes—8 a.m.

Three o'clock classes—12:30 p.m.

### ALL EXAMINATIONS

will begin at the hours scheduled above and will run for two clock hours, except for classes that meet only one or two times a week. Examinations for these will begin at the end of the two-hour exams and will run for one clock hour.

Examinations in evening and Saturday classes will be held at the last meeting of the class during the exam week.

## To Give Awards To AF ROTC Men

Awards for which Southern Illinois University air cadets may qualify were announced recently by Lt. Col. Oliver K. Halderson, commanding officer of the SIU Air Force ROTC. The announcement followed approval by the SIU Board of Trustees.

Outstanding AF ROTC cadets will receive the following annual awards presented by the SIU Board: 1—Trustees' Cup for the best drilled unit or squadron; 2—Trustees' Medals for the outstanding senior and sophomore cadets; 3—Trustees' Medals to the outstanding advanced cadets at summer camps; 4—Trustees' Medals for highest marksman on the rifle team.

**THE BOARD** approved also presentation of the following medals from all-campus sources: 1—Air Force Association Medal for advanced cadet, with highest military grades; 2—Reserve Officers' Association awards for the outstanding senior and sophomore cadets.

3—Chicago Tribune gold and silver medals for the outstanding junior and sophomore cadets in particular military courses of the current quarter; 5—Armed Forces Chemical Association awards for the outstanding junior cadets in the country majoring in chemistry or chemical engineering.

### TO GIVE DEMONSTRATION ON VEGETABLE COOKERY

A demonstration on vegetable cookery will be given by Wanda Graves Friday, Feb. 29, 11 a.m., in Main 110. The demonstration will be open to the public.

### JEANNE WEBB TO GIVE FOOD DEMONSTRATION

"Freeze with Ease" is the topic of a food demonstration to be given by Jeanne Webb, Wednesday, Feb. 27 at 11:10 a.m., in room Main 110. The public is invited to attend the demonstration.



**PRESIDENT DELYTE W. Morris** chats with several men students from the SIU Men's Residence halls at their recent open house. Theme for the event was "Pioneering."

## Make Plans To Begin On Highway 51 Relocation

by Jim Fecho

Preliminary plans are in progress for the relocation of highway 51, in order to reroute the heavy flow of traffic to a different section of the campus.

According to personnel of the architectural service, construction on the new road will be started as soon as weather permits. At the present time rain and mud are factors in holding up construction. If work is accomplished as planned, the road should be ready for service by late summer or early fall of this year.

Plans call for the new location of route 51 to swing to the east from a point south of the reservoir road, continue northeast so as to pass between the new power plant and the Illinois Central railroad tracks, then run parallel to the IC tracks until joining with route 51 at the junction of Illinois and Grand avenue.

**THE ROAD FROM** the power plant north to Illinois avenue will be of four-lane construction while the road from the power plant south to the reservoir will be two lanes. The widening of the road to four lanes north of the power plant is to facilitate the more rapid movement of traffic after an event in the football stadium.

Two pedestrian underpasses will be constructed to help provide a more rapid and safer movement of people on their way to football games. These underpasses are to be constructed at some distance south of the campus, and will be used more by future students than students at the present time. Future plans call for the campus to extend further south than at the present.

Over 7,000 feet of highway are to be laid, or approximately a mile and a half of concrete.

**THE PRESENT ROUTE 51** will

accommodate only a fraction of the traffic in the future. Tentative plans call for Harwood Ave. to be the center spoke of the campus highway system. At some time in the future it will be resurfaced and will act as the connecting link between old highway 51 and new highway 51 to the east.

The road that extends in front of the cafeteria around the Baptist Foundation and past the Canteen will be used very little. Plans also call for the building of a road connecting the power plant to the present route 51.

**STOP IN TONIGHT FOR**



**WAFFLES**

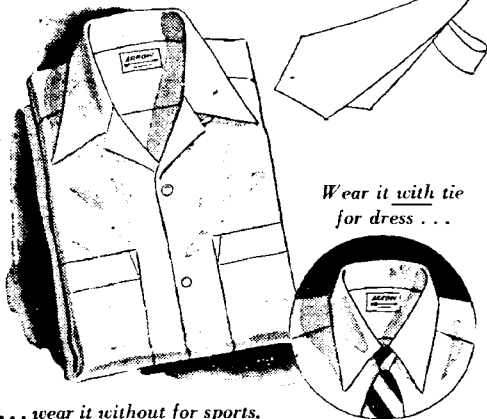
GOLDEN BROWN

and DELICIOUS

**HUB CAFE**

Corner of Main & Illinois

*Tie this one, if you can!*



*Wear it with tie for dress ...*

*... wear it without for sports.*

*There's no better-looking, more comfortable, all purpose shirt on campus!*

**ARROW BI-WAY**

Collar open, it assures you a trim look—closed, and with a tie, you still enjoy sports-shirt comfort!

**ARROW**

SHIRTS • TIES • SPORTS SHIRTS • UNDERWEAR • HANDKERCHIEFS



**WILLIAMS STORE**

212 S. Illinois

**OPENING A NEW LINE**

**REMINGTON LONG-PLAYING RECORDS**

33 1/3

12" CLASSICAL RECORDS ..... \$2.19  
10" CLASSICAL RECORDS ..... \$1.69  
10" POPULAR RECORDS ..... \$1.29

# Salukis Drop 53-48

## Contest to Beloit;

### Record Now 13-10

Coach Lynn Holder's basketball squad forced last Saturday's game against the once highly-rated Beloit university team into an overtime thriller before succumbing to a 53-48 defeat.

The game, played before a capacity crowd in the Beloit field house, was a close one until the overtime period got underway. When the regulation four quarters of play had elapsed, the two teams were locked in a 46-46 tie. Beloit scored the first two baskets in the overtime, and from there on out coasted to an anticlimactic victory.

After a deadlocked first period in which both teams scored 14 points, Southern outscored their Wisconsin hosts in the second quarter, to take a 29-26 halftime lead.

Beloit came back to tie the score at the end of the third period, 40-40. Both teams played slow, cautious ball in the final quarter, an unusually low scoring period in which both squads scored six points.

Southern was hurt decidedly by fouls. Chuck Thate, starting center, fouled out in the third quarter. Ray Ripplemeyer, Bob Nickolaus, and Stan (Pony) Horst all left the game by the same route early in the final period.

Thate, who did all his scoring in the first half, led the Salukis with 12 points. Gib Kurtz was second for Southern in scoring totals with nine points. Charlie Neal and Bill Whitlow, both of Beloit, shared high scoring honors of the game with 13 points apiece.

Commenting on the game, Southern's coach Lynn Holder said, "Our kids fought like Trojans, but we weren't too hot on our shooting. Both teams played a fine defensive game, but we made a few mistakes that hurt. Still, I'm sure we out-rebounded them, both on offense and defense."

The Salukis conclude their season's schedule next Saturday, when they travel to New York to be hosts of Siena College. Siena is currently rated among the top twenty schools in the nation in the Associated Press basketball polls.

Southern	FG	FT	PF	TP
Ripplemeyer	2	0	5	4
Nickolaus	1	2	5	6
Valier	0	1	2	1
Thate	4	4	5	12
Hollopeter	3	0	2	6
Theriot	1	1	3	-3
Kurtz	3	3	3	9
Horst	0	1	5	1
Welch	3	0	3	6
	18	12	32	48

### VARSITY THEATRE

Tuesday, Feb. 26 Only

"LIGHT TOUCH"

Stewart Granger, Pier Angeli

Wed., Thurs., & Fri., Feb. 27-28-29

"SAILOR BEWARE"

Dean Martin, Jerry Lewis

### RODGERS THEATRE

Tues. & Wed., Feb. 26-27

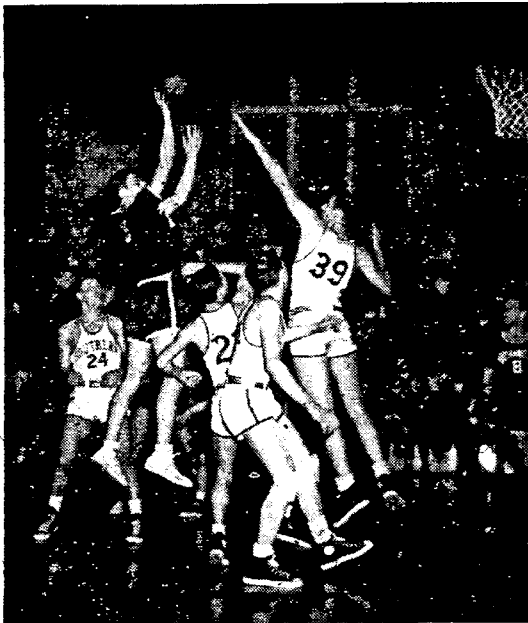
"THE GLASS MENAGERIE"

Jane Wyman, Kirk Douglas

Thurs., & Fri., Feb. 28-29

"EMERGENCY WEDDING"

Larry Parks, Barbara Hale



Washington University's Duncan Hansen goes up for a shot in last week's game but finds the floor crowded with Salukis. Getting in his way are Bob Nickolaus (24), Jacque Theriot, Ray Ripplemeyer and Chuck Thate.

## Siena Tilt Saturday Is Last On List For Southern Hoopsters

by Jack Nettland

Southern's Salukis, who wound up the home phase of the present campaign last Wednesday night against Washington University, will close shop next Saturday evening in Albany, New York, when they hit the hardwood against small but stiff Siena College.

IN THE MOST recent national collegiate poll, Siena was ranked eighteenth in the nation. Behind it in the number nineteen and number twenty positions were two annual cage notables—Wyoming and LaSalle respectively. Siena polled 55 points from the nation's sports-writers, including one first-place point, which placed it just three points behind strong Holy Cross. Earlier this season, the same Crusaders dumped St. Louis University in Madison Square Garden.

The same poll gave powerful Eastern Illinois State only an honorable mention rating. Eastern slapped Southern down twice this

Beloit	FG	FT	PF	TP
Barts	3	1	1	7
Gilmore	0	0	1	0
Donahue	1	4	3	6
Schuneman	0	1	0	1
Neal	4	5	2	13
Smith	0	1	1	1
Houghton	1	2	1	4
Whitlow	6	1	1	13
Keane	2	3	5	7
Ewell	0	11	1	1
	17	19	16	53
Southern	14	15	11	6 o.t. 2
Beloit	14	12	14	6 o.t. 7

### OPEN PLAY

### BOWLING

TUES. - FRI. - SAT. - SUN.

Free Instructions for Beginners

Open at 3 p.m.

### CARBONDALE LANES

211 W. Jackson — Phone 63

year while rolling to 20 consecutive triumphs.

THE GAME NEXT Saturday will mark only the second meeting between the two schools. In the 1949-50 campaign, the Southerners, led by all-conference forward Tom Millikin, lost to Siena, 49-46. That year, the Salukis had a strong 21-6 record to sport.

Saturday's game, unless the Michigan Normal contest is rescheduled or the Salukis play in a post-season tourney, will be the finale for senior Captain Stan Horst.

### YOU NAME IT

This week's close-up is an enlargement of the teeth of a section of an ordinary comb.

### TO GIVE DEMONSTRATION ON 'ECONOMY MEATS'

A lecture-demonstration will be given on "Economy Meats" by a student demonstrator, Freda Thompson, Friday, Feb. 29.

The demonstration will be given at 10 a.m. in room Main 110. The public is invited.

## CLASSIFIED ADVERTISING

RATES, 5c per word with minimum charge of 50c.

FOR RENT—Boys' rooms and furnished apartments. Call 500.

### GRADE TEACHERS NEEDED—

California. Salaries \$3,000 up. Also need Girls Phys. Ed., English, Spanish. Teachers Specialists Bureau, Boulder, Colorado.



Pure Apple Cider

Made fresh from the 1951 crop of finest apples grown

Troubaugh Homestead

On the Murphysboro Hardroad

Open evenings until 8:00

# Salute the Salukis

by Sherman Doolen

Southern's overall record in basketball this season hasn't been exceptional, but home fans certainly haven't had anything to complain about. The Salukis lost only two of their ten home games and those two by slim margins.

In doing so, the Salukis racked up a total of 620 points to their opponent's 542. Not only did Southern win most of its home contests but practically all of the games were exciting ones. One of them went into overtime and four were decided by three points or less. That held true in both of the games Southern lost, by two points

to Normal and by three to Eastern:

The home court record this season:

Southeastern Louisiana, 63-58.

Eastern New Mexico, 59-44.

Centralia Michigan, 73-67.

Northern Illinois, 71-66 (overtime.)

Illinois Wesleyan, 82-53.

Capo Girardeau, 44-42.

Illinois Normal, 63-65.

Western Illinois, 67-47.

Eastern Illinois, 56-59.

Washington U., 42-41.

Only one game was cut-and-dried affair, the 20-point victory over Western. Even Southern's 82-53 win over Wesleyan had its thrilling moments, as Tom Millikin tried for a new scoring record in his last appearance.

Millikin, incidentally, made the most points on the home floor. In five games he scored 106 points. Top scoring performance for a single game was his 31 points against Wesleyan.

Other home court marks: Chuck Thate 85 points in nine games; Harvey Welch, 81 points in eight games; Bob Nickolaus, 80 points in nine games; Ray Ripplemeyer, 68 in eight and Gib Kurtz, 56 in nine.



BECAUSE . . .  
IT'S  
SPEEDY  
and  
DEPENDABLE!  
BIGGS DIXCEL  
STATION  
509 S. Illinois

# Rent A Typewriter

SOLVE YOUR TERM PAPER PROBLEM

SPECIAL RATES

TO STUDENTS!



R. J. Brunner Co.

403 S. ILLINOIS

PHONE 1161