

11-30-1956

# The Egyptian, November 30, 1956

Egyptian Staff

Follow this and additional works at: [http://opensiuc.lib.siu.edu/de\\_November1956](http://opensiuc.lib.siu.edu/de_November1956)

Volume 38, Issue 19

---

## Recommended Citation

Egyptian Staff, "The Egyptian, November 30, 1956" (1956). *November 1956*. Paper 1.

[http://opensiuc.lib.siu.edu/de\\_November1956/1](http://opensiuc.lib.siu.edu/de_November1956/1)

This Article is brought to you for free and open access by the Daily Egyptian 1956 at OpenSIUC. It has been accepted for inclusion in November 1956 by an authorized administrator of OpenSIUC. For more information, please contact [opensiuc@lib.siu.edu](mailto:opensiuc@lib.siu.edu).



# THE Egyptian

GOURNMENT PUBLISHED WEEKLY

Published semi-weekly during the school year excepting holidays and some weeks by students of Southern Illinois University, Carbondale, Ill. Entered as second class matter at the Carbondale post office under the act of March 3, 1879.

Publisher of the Egyptian are the responsibility of student editors appointed by the Campus Journalism Council. Statements published here do not necessarily reflect the opinion of the administration or any department of the University.

General Editor	Gene Gynn
Editor-in-Chief	Jack Thacker
Managing Editor	Gary Hepp
Business Manager	Bill Epperheimer
Sports Editor	Warren Talley
Circulation Manager	Peggy Morgan
Society Editor	Charles C. Clayton
Fiscal Sponsor	Tom Goodman, George Bliss
Photographers	Bill Christine
Copyright	

### REPORTERS

Ile Blazer, Leo Myers, Ray Serati, Joe Melosi, Wayne Haguse, Bob Cox, Ruth Reeves, Ed French, Richard Darby, Joyce Binkley.

## Some Progress

The City of Carbondale and the Illinois Central railroad are making progress. With eight railroad crossings in Carbondale, they have succeeded in placing a crossing gate at two of them.

At three others there are part time watchmen, but one of the most used crossings in Carbondale is still being neglected. The Grand Ave., Illinois Central intersection is still without any type of warning or safety device.

During the winter of 1955 one SIU student was killed and another injured. This past summer two persons, a man and a woman were injured. All of the victims were struck by trains.

With all of the traffic at this crossing why is it being so neglected. Every day hundreds of students and townspeople cross there at a risk to life and limb.

Traffic coming from the west

has the view of the tracks obstructed by the cars in the parking lot. Traffic from the east can't see because of the high ground.

Danger is especially high during the cold winter season. On cold days, many cars have a tendency to stall at awkward times. One of those times could be in the middle of the tracks.

Then too, as an added detriment to visibility, windows in autos become "fogged" or covered with frost.

Summer is little better when weeds and grass grow high and cut down the visibility even more.

Isn't it evident that some sort of warning device is needed at the Grand Ave. crossing of the Illinois Central tracks, or are more casualties needed to convince those concerned?

## Wichita Grad Dean Impressed With Library

Dr. John Rydjord, dean of the graduate school at the University of Wichita, said he was very impressed with SIU's new library when he visited the campus last Tuesday.

Rydjord visited SIU in order to gain "Tips" on how to prepare a self-survey report of the Ph. D. degree.

He came to the campus at the time when SIU is conducting a self-survey report of facilities and curriculum to submit to the North Central Association in an effort to offer the Ph. D.

Rydjord, who has been at the University of Wichita since 1925 also met with the SIU staff members who are working on the current self-survey report.

The Dean was very impressed with the rapid growth in enrollment that SIU has enjoyed over the past few years.

However, this is nothing new to him since the University of Wichita has increased by about 1,000 over last year's enrollment.

### LITTLE MAN ON CAMPUS by Dick Bibler



AND NOW, DR. CLOPPAGE WHO WILL RELATE HIS EXPERIENCES AMONG THE HEAD SHRINKING NATHIES OF CENTRAL AMERICA!

## Gus Bode Returns

There is good news for you followers of the famous SIU philosopher Gus Bode. As we were going to press he stopped in at our offices and reported that he has recovered sufficiently to continue with his little bits of wisdom.

Gus says: Many of those father-and-college son talks are merely touch and go affairs;

Students get into trouble simply by mistaking temptation for opportunity;

Remember the athlete you subsidize today may save that game tomorrow;

Any college student will tell you that charity should begin at home; Poor officials are selected by coaches who do not pay well;

A sucker is a feller that opens those boxes from home in front of his roommates;

Instructors often get the upper hand, but not where it will do the most good.

### TOO LATE TO BE CLASSIFIED SECTION

IT'S EASY— to place a classified ad with the Egyptian— Call EXT 226 or Mail to EGYPTIAN—

Sending ads may be CHARGED —CASH is required for spot ads.

### DEADLINE FOR CLASSIFIED ADS

MONDAY for FRIDAY PAPER  
FRIDAY for TUESDAY PAPER

Typing Service —Students have your term papers, theses, etc. expertly typed. Contact Mrs. JEAN SEATS, 401 N. Washington, PH. 740L, Oct. 23-C

LOST — Gold Wedding Ring — KEEPSAKE — Size 10. Call CARBONDALE 744-K or UNIVERSITY EXT. 224.

# TOM MOFIELD'S

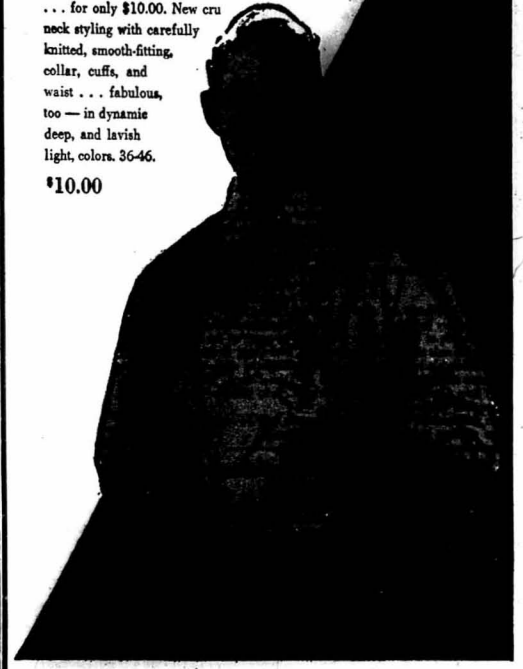
"MEN'S WEAR"

IMPORTED LAMBS WOOL LUXURY...

the MCGREGOR BALMORAL

Imagine! . . . soft as cashmere in luxurious, imported lambs wool . . . for only \$10.00. New crew neck styling with carefully knitted, smooth-fitting, collar, cuffs, and waist . . . fabulous, too — in dynamic deep, and lavish light, colors. 36-46.

\$10.00



**FOR HER... or HIM**

**SAY MERRY CHRISTMAS WITH JEWELRY**

- Watches
- Sheaffer Pens and Pencils
- Lighters
- Diamonds
- Princess Gardner Wallets
- Silver

**CANNON'S JEWELRY**  
"YOUR CAMPUS JEWELER"  
414 S. Illinois Avenue

**Christmas GIFT SHOP NOW**

Counters are Brimming . . . Selections are Greater in Our Newly Remodeled, Enlarged Store. You'll Find Gifts for Everyone on Your Christmas Shopping List.

OPEN 'TIL 9 P. M. MONDAYS  
"Your One-Stop Christmas Shopping Center"

**STROUP'S**

up to 24 months to pay

**1957 ROYAL portable**

WITH **TWIN-PAK** . . . THE ONLY QUICK CHANGE RIBBON!

Available in new decorator colors:  
Royal beige Royal Gray  
Royal Pink Royal Turquoise  
Royal Green Royal Red

**Brunner Office Supply Co.**  
403 S. Illinois Ave.  
Carbondale, Ill.

**TOYS**

For GIRLS and BOYS!

— AT —

**Easterly's**

"We'll Hide Your Surprise 'Til Santa Arrives!"

FOR BOYS: Complete line of electric trains, with added accessories (extra cars, bridges, signals, etc.)

FOR GIRLS: 8-inch Dolls with clothes and furniture to match.

Ask About Our "Pay Later" Plan

**EASTERLY PAINT STORE**

204 W. Main Open Mondays 'Til 9 p. m.

**Stop everything—start laughing!**

**Sticklers!**

HERE'S A STICKLER! IF YOU HAVE A LUCKY, WHAT ELSE DO YOU NEED? (SEE PARAGRAPH BELOW)

IF YOU'VE GOT A Lucky, you've got it made. That's 'cause you just can't beat a Lucky for taste. Luckies are made of fine tobacco—light, naturally good-tasting tobacco that's TOASTED to taste even better. In fact, you'll say Luckies are the best-tasting cigarette you ever smoked. What more could you want? Oh, the answer to the Stickler! If you're in a light plight, what you need is a Match, Natch!

"IT'S TOASTED" to taste better!

Sticklers are simple riddles with two-word rhyming answers. Both words must have the same number of syllables. (No drawings, please!) They're so easy, you can think of dozens in seconds. We'll shell out \$20 for every stickler we can—and for hundreds more that never see print. So send stacks of 'em with your name, address, college and class to Happy-Joe Lucky, Box 67A, Mount Vernon, N. Y.

DON'T JUST STAND THERE... STICKLE! MAKE \$25

**Luckies Taste Better**  
CLEANER, FRESHER, SMOOTHER!

WHAT DO YOU CALL THE MEANEST SHEEP IN THE FLOCK? Woolly Bully

WHAT IS A MIDGET GUARD MESSAGE? Pocket Rocket

WHAT IS AN AMUSING GHOSE? Droll Troll

WHAT IS A HOBBLEWAY FOR SHEEPHOY? Oyster Cluster

©A.T.C. PRODUCT OF The American Tobacco Company AMERICA'S LEADING MANUFACTURER OF CIGARETTES

# --Southern Society--

**Sig Tau Pi Kappa Pledges Have Party**  
The Sigma Tau Gamma and Pi Kappa Sigma pledge classes recently had an exchange party at the Pi Kappa house. Following a group "mixer," a buffet supper was served. Faculty guests at the party were Mr. and Mrs. Charles Wildy and Dr. David Palermo.

**Delta Sigma Elected Yocks As Secretary**  
Inez Yocks was elected secretary of Delta Sigma Epistolary society at the meeting Monday. She replaces Kathy Hooker, who graduates at the end of fall term.  
The Delta Sigmas are planning Christmas caroling for December 10, a Christmas party will be held after the caroling.

**Acacia Pledges Three**  
SIU's Acacia Club has pledged three men. The new pledges are Bill Reed, Gary Ripley and Don Worley.  
Bob Jepson, national traveling secretary, will visit the colony next week. His last visit to the colony was during October. At that time he helped the group form various committees.  
Bob Huppel, senior official barister, was chairman of the first annual Turkey Trot.  
John Evans was elected senior steward. Dean Carr is the new secretary.

Keith Steckler, Charlie Russell and Ron Briggs are members of the committee recently formed to work on the Theta Xi variety show act.  
Another in the colony's series of rush parties will be held next week.  
**Pi Kaps Win Turkey Trot**  
The Pi Kaps placed first, along with Theta Xi fraternity, in the Turkey Trot last week. Margie Basinger and Judy Frank were on the winning Pi-Kap team.  
An exchange party with Theta Xi is being planned for the near future.  
Dr. Georgia Winn, of the English department, was a recent dinner guest at the chapter house.  
A slumber party for pledges and activities has been planned for tomorrow night. A fashion show will

highlight the evening.  
**Delta Zetas Attend Debate In Peria**  
Marsha Wishe and Regina Miller, both Delta Zetas, spent last weekend in Peria. They were there on a debate trip.  
Imogene Beckenmyer, one of the sorority's sponsors, visited the alum chapter in Belleville.  
"Kick" Delta Zeta's mascot, has returned to the chapter house after a stay at Shirley Morelan's home.  
An exchange dinner was held last week with the TKE's.  
Ellie Miller Douglas, an alum, visited the house last weekend.

**Herron Heads IFC Workshop**  
Jim Herron was elected by the Inter-Fraternity Council to be chairman of the IFC Workshop.  
The "A" team lost in basketball to Delta Chi, 35-32, but the "B" team defeated Sig tau's "B" team by a score of 43-29.  
John Merry, sports manager, injured his leg and will not be able to play the rest of the season.  
Jack Thatcher is attending a Sigma Delta Chi convention in Louisville, Ky.

**Sigma Kappa Open House Set For Sunday Evening**  
Sigma Kappa's open house will be from 7 to 9 p. m. Sunday "Santa's Workshop" is the theme for the occasion. Dorothy Koplin is chairman.  
An exchange party with the Sig Eps will be held tonight at the Sigma Kappa house. It has been planned as a "hobo" hop.  
Pat Cook and Peggy Tyrler will be at the University of Illinois today and tomorrow, attending a Student Union convention.  
La Donna McMurray and Shirley McCluskey represented SIU in discussion and debate at the Bradley speech tournament in the U. of Illinois last weekend.  
Shirley McCluskey was recently elected activities chairman.

Erna Knupp is president of this year's pledge class. Other officers are Jay Jones, vice president; Pat White, secretary; Marilyn Perkins, treasurer; Marsha Van Cleve, social chairman; Georgine Stiedel, activities chairman; Zelma Johnson, Zeta.

## Fall Quarter Final Exam Schedule Sees Changes Made

**Wednesday, December 12**  
4 o'clock classes 4 p. m.  
**Thursday, December 13**  
8 o'clock classes (except 3-hour classes which meet one of the class sessions on Saturday, 8 a. m.)  
English 101 11 a. m.  
1 o'clock classes 1 p. m.  
Chemistry 111 4 p. m.  
**Friday, December 14**  
9 o'clock classes (except 3-hour classes which meet one of the sessions on Saturday, 8 a. m.)  
Mathematics 106 and 111 11 a. m.  
2 o'clock classes 1 p. m.  
Women's Freshman Physical Education and Air Science 101 and 201 4 p. m.

**Saturday, December 15**  
8 o'clock 3-hour classes which meet one of the class sessions on Saturday 8 a. m.  
9 o'clock 3-hour classes which meet one of the class sessions on Saturday 10 a. m.  
11 o'clock 3-hour classes which meet one of the class sessions on Saturday 12 o'clock.  
The new members attended their first meeting on Dec. 26, and plans for the Angel Flight day, Feb. 8, 1957.

The 1956 Dolphin Queen, Pat Elder, and a member of her court, Pat Decker, members of the organization sponsored by Southern's AFROTIC.  
The new Angel Flight members are:  
Barbara Absher, Linda Adams, Sue Blackman, Karen C. m. p. e., Gloria Credi, Pat Dey, Pat Elder, Maryblye Elkins, Beverly Fosnick, Mary Alice Carnegie, Jeanette Foster, Lynn Gentry, Jo Kirby, Suzanne Knox, Suzan Krump, Joan Pratts, Patsy Marcum, Mary K. Sharkey, Georgine Stiedel, Margie Zimmet, and Jean Myers.

**Monday, December 17**  
Five-hour classes which meet during the first period (6:00-7:30 p. m.) on Monday, Wednesday, and Thursday 6 p. m.  
Four, three, two, and one-hour classes which meet during the second period (7:35-9:00 p. m.) on Tuesday and/or Friday 8 p. m.  
Classes which meet only on Friday night. Examinations will start at same times as the class sessions ordinarily start.

**Thursday, December 13**  
Five-hour classes which meet during the second period (7:35-9:00 p. m.) on Monday, Wednesday, and Thursday 6 p. m.  
Classes which meet only on Thursday night. Examinations will start at same times as the class sessions ordinarily start.

**Friday, December 14**  
Four, three, two, and one-hour classes which meet during the first period (6:00-7:25 p. m.) on Tuesday and/or Friday 6 p. m.  
Four, three, two, and one-hour classes which meet during the second period (7:35-9:00 p. m.) on Tuesday and/or Friday 8 p. m.  
Classes which meet only on Friday night. Examinations will start at same times as the class sessions ordinarily start.

**Monday, December 17**  
Five-hour classes which meet during the first period (6:00-7:30 p. m.) on Monday, Wednesday, and Thursday 6 p. m.  
Four, three, two, and one-hour classes which meet during the first period (6:00-7:25 p. m.) on Monday and/or Thursday 6 p. m.  
Four, three, two, and one-hour classes which meet during the second period (7:35-9:00 p. m.) on Monday and/or Thursday 8 p. m.  
A special note needs to be made relative to examinations for evening sections for those 100 and 200-level classes which have been granted a special time for examining all sections. As some students attending at night may not be able to attend the examination period scheduled for the daytime, such sections should hold their examinations at night at the times outlined above.

**Varsity Theater**  
Saturday, December 1  
DOUBLE FEATURE  
Virginia Mayo and George Nader in  
**"GIRL ON THE RUN"**  
Sun., Mon., Dec. 2-3  
Olivia de Havilland and John Forsythe in  
**"The Ambassador's Daughter"**  
**RODGERS** Theater  
Double Feature Every Program  
Saturday, December 1  
Dennis O'Keefe and Margaret Sheridan in  
**"The Diamond Wizard"**  
ALSO  
Richard Todd and Michael Redgrave in  
**"DAM BUSTERS"**  
Sun., Mon., Dec. 2-3  
Jean Peters and Richard Todd in  
**"A MAN CALLED PETER"**  
ALSO  
Eve Arden and Gene Gordon in  
**"OUR MISS BROOKS"**

**FOR ALL BAKING NEEDS**  
We do our noble best, for not only are we "Princes among fellows," we're "Pastry Kings!"  
• Coffee 5c  
• Fruit Tarts 10c  
**PASTRY KING**  
214 S. Univ. Ph. 1313



**SEAMSTRESSES**  
Wearing their classwork as these advanced home economics students who made their own coats in a sewing class. The department is so crowded that much of the sewing must be done in corridors. Pictured are Erna Knupp, left, Martha Lof-fus, Virginia Murphy, and Shirley Gort.

## SIU Debaters Face Four Major Tournaments

Four major tournaments face the SIU debate squad within the next two weekends, as they hope to increase their record of 25 wins and seven losses in tourney competition.  
Two SIU teams, accompanied by coach Walter Murrish, will enter in the Northwestern University Invitational at Evanston, Ill., this Fri. and Sat. Nov. 30 and Dec. 1.  
The teams of Richard Reicke-Joe Selement, and Peter Morris-Ted Foster will debate both sides of the proposition for SIU. All teams in the elimination tourney will debate six times, with trophies to be given to first, second, and third place winners. Twenty-four schools are expected to debate in the meet which will be held in the new modern Kresge building in Evanston.  
**Two Teams At Greenville**  
Two other SIU teams will also be debating tomorrow, at the seventh annual Greenville College Invitational tourney, at which SIU brought home first place last year.  
The negative team is La Donna McMurray and Bob Holton, with Regina Miller and Marsha Wehn debating the affirmative. Accompanied by grad assistant Richard Crawford of the SIU speech department, the debaters will depart for Greenville tomorrow morning.  
All of the debates in the tournament will be conducted according to the traditional plan, with ten minutes of constructive speeches and five minute rebuttals.  
**Debate, Pro and Con**  
All members of Southern's squad are now debating both sides of the 1956-57 proposition, "Resolved, that the United States should discontinue direct economic aid to foreign countries."  
Southern's two undefeated teams

## Q. How Long to ... Dinner? A. Only as Long as ... Your Phone!

**LET US SERVE YOU AT HOME OR WORK**  
We'll prepare lunches and complete dinners and deliver them to you.  
No delivery charge for orders over \$2.00.  
**GREEN MILL CAFE**  
Phone 34 Phone 34

**MARLOW'S FRIDAY - SATURDAY**  
Nov. 30 - Dec. 1  
Murphysboro, Ill. 2 - BIG FEATURES - 2  
**THE MAVERICK QUEEN** **THE FIGHTING CHANCE**  
**SUNDAY - MONDAY - TUESDAY**  
Dec. 2-3-4 - Continuous Sunday from 2:15  
**WALT DISNEY'S FANTASIA**  
STOKOWSKI  
Also NEWS REEL  
IT'S FOR REAL! by Chester Field

**PHILOSOPHY FOR TODAY**  
"You ask me why I smile," he said,  
"When H-Bombs hang above my head,  
My car's a wreck... my gal has had  
My money's gone... I'm in the red...  
Why do I smile?... You ask me why?  
CHESTERFIELDS! THEY SATISFY!"  
**PASTRY KING**  
214 S. Univ. Ph. 1313

**\$\$\$ AT YOUR FINGERTIPS**  
Avoid the necessity of carrying large sums of cash. Cut down on temptation to spend what you have by letting us be your personal treasurer.  
**First National Bank**  
In Carbondale 101 N. Wash. Free parking for our customers  
**VOGLER MOTOR CO., INC.**  
"Your FORD Dealer for 33 Years"  
A 1957 FORD CAR offering the advantages of both the hardtop and the convertible represents the first revolutionary new idea in automotive design since the development of the closed car 40 years ago. To change the hardtop into a convertible, the driver simply presses a button and the all-steel top automatically slides into the trunk where it is completely concealed. It's equally simple to raise the top. The center picture shows the top in operation. Production of the car, a Ford first, will start in January.

# Salukis Open At Vaparaiso

## Veteran Saluki Squad Lacks Height, Must Stress Defense

By Bill Eppheimer

Coach Lynn Holder's version of the 1957 Salukis open their season Saturday night against Vaparaiso University in Valparaiso, Ind., with a veteran squad that is sorely lacking in height.

Tallest man on the Saluki squad is 6-5 center Larry Whitlock, while other heights range from 5-9 up.

Holder has named as his starters Saturday night the following: Warren Talley and Seymour Bryson at forwards; Whitlock at center; and Capt. Gordon Lambert and Robert Welch at guards. Others who will make the trip are Frank Borgmiller (6-3), Marjon Bushing (6-2), Marvin Jones (6-2), Richard (H. Bow) Jones (5-9), Joe Gonzalez (5-10), Sammy Duane (6-2), and Garrison Newsome (5-10).

In Valparaiso, the Salukis will be facing a team that has a front line that stands 6-6, 6-5, and 6-6 and will be playing in the Orange Bowl Christmas Tournament in Miami, Fla.

For Southern in the front line, Talley, a junior, is 6-3, Bryson, a sophomore, stands 6-4, and Whitlock, a junior, is 6-5. Lambert a senior is 6-3, and Welch also a senior at six feet is the shortest

## Intramurals

By Joe Melosi

Three nights and 20 basketball scores ago, intramural basketball teams, with a brief intermission for Thanksgiving resumed play in the third week of the cage competition.

Prior to the turkey day interim, games were played on Monday Nov. 19 and Tuesday Nov. 20. Play resumed again on Monday Nov. 26.

Six teams, mainly from independent houses, rounded out the night's play.

Arnold Air Society roasted the Hor Dogs, 48-33. Blume was chief fork man for the Society with 18, while Chitty led the roasted with 16.

Bavarians skied past the Round house Gang, 39-22. Miles had 20 for the winners, Houston and Cruise each had five for the losers.

The Pivoters blasted the Gunners, 43-36. Oettle led the Pivoters with 15 points, Levin had nine for the wounded.

The Road Runners ambushed the Royal Knights, 65-45, Galsbey having 19 points. Griffin had 14 for the Royal, but defeated, Knights.

Moves Boys, led by Cantrell's 15 points, shot down the Satellites, 38-29. Shields racked up 13 for the Satellites.

Wesley Foundation lassoed Ex-Button Rangers, 32-29. Dzenagowski having nine for the Foundation, Taylor with 12 for the Rangers.

**Tuesday Nov. 20**

Whitney's 15 counters aided his Fugitive mates to a 43-35 win over the Falcons. Gum led the fallen Facons with nine.

The Backjacks clubbed the Playboys, 52-34. Hart's 16 points led the assault. Brooks had 14 for Playboys.

The Egopits, led by Trech and Beasley, buried the Skeiks, 99-22. Five players went into double figure scoring column for Egopits. Trech had 25, Beasley having 23. Poole pooled seven the Skeiks.

Kappa Alpha Psi trumped the Theta Xi "A" team, 50-36. Hammond scored 20 for the Psi. Biggs contributed 11 for Xi.

Delta Chi dumped Phi Kappa Tau "A", 35-32. Flagg was high chi guy with 11 points, Zimmer and Bohmer each having nine for Tau "A".

Sig Tau "A" throttled past Sig Eps, 29-22. Motta amassed 10 for the Tau men. Bush flipping in nine for Eps.

TKE "A" humbled Acacia, 47-24. Martie's 14 points leading a winning attack, Bogg's eight a losing cause.

Alpha Phi Alpha took Sig Pi

## Athletic Office Revises Student Seating Plan For Cage Games

In a university with expanding enrollment an non-expanding seating capacity at the gymnasium, a slightly revised student ticket plan has been announced by the athletic office to accommodate students who want to attend the SIU home basketball games this season.

The seating capacity of the gymnasium is now 1582 and the enrollment is 6200-plus. With the scant seating capacity, it is impossible for everyone to attend on the same night.

Seven sections, A, B, C, D, E, F and L will be reserved for the students.

The number on the activity card will determine to which game the student is enabled to go. There will be eleven home games and each one is numbered.

If the activity card falls in the even-numbered category, such as 0-999, 2,000-2999, 4,000-4,999, and 6,000-6,999, the student is entitled to pick up his ticket for the even numbered home games, such as game 2, 4, 6, 8 and 10.

If the activity card is in the odd

category, such as 1,000-1,999, 3,000-3,999 and 5,000-5,999, then the student is eligible to attend the games numbered 1, 3, 5, 7, 9 and 11.

All tickets must be picked up at the university ticket office no later than 4 p. m. The day previous to the game. Those tickets remaining after that time will be at the disposal of any student, regardless of number category, no later than 4 p. m. the day of the game.

Tickets will go on sale to the general public from 6 p. m. to 8 p. m. Any student who wants to attend and has failed to secure his ticket at the designated time will have to pay the \$1.25 admission charge during this two-hour period.

However, those tickets not sold by 8 p. m. the night of the game will be distributed to the student free of charge.

AT THE  
**ROSS STORE**  
218 S. Illinois  
Carbondale, Ill.

In Christmas Layaway Gifts.  
**THE FAMOUS SHOP**

## Gone Are The Days Wild Turkeys Leave Southern Illinois

The woods of Southern Illinois no longer echo the gobble of relieved Thanksgiving gobblers, according to Dr. W. D. Klimstra, associate professor of the zoology department, for he has given up the ghost and left Southern Illinois for greener pastures.

"The wild turkey has been extinct for so long in the state of Illinois that they are not even mentioned in the code book," Klimstra said. "Turkeys need large tracts of undisturbed land and Southern Illinois has very little of this to offer."

SIU Cooperative Wildlife Research helped the State release and reintroduce turkeys in 1954 and 1955, and subsequent surveys indicated that many of the turkeys survived and have reproduced.

"One of the main problems in keeping wild turkeys in Southern Illinois is keeping them out of the barn yard," said Klimstra.

The turkeys find it easier to live on the farm than to fend for themselves so they move into the barn yard and become domesticated.

According to Dr. Klimstra, our turkeys are not of that old strain that graced the tables of the pioneers. They originally came from Mexico from where they were taken to England upon Turkish vessels. (This is where Turkey allegedly got it's name.) From England the turkeys were brought back to America to become the domesticated turkey that we know today.

**STUDENTS**  
Come in and Try One of Our Delicious  
**19c HAMBURGER SANDWICHES**

Complete Line of . . .

- COSMETICS
- DRUGS
- School Supplies

TRY OUR WIDE VARIETY OF ICE CREAM  
**CARBONDALE WALGREEN**

## Western Rates As IIAC Cage Favorite

Five Interstate Conference basketball squads open the 1956-57 season Saturday, December 1, against non-league opponents.

Defending IIAC champion Western Illinois is host to Illinois College, Eastern Illinois entertains Indiana Central, and Illinois Normal hosts Quincy College. Two league teams open away from home. Southern Illinois is at Valparaiso and Northern Illinois is at Milwaukee State.

First conference action is slated for December 14, with Central Michigan at Eastern Illinois and Eastern Michigan at Southern.

Western, undisputed champion of the IIAC for the past two years, is favored to repeat in 1956-57, but the Leathernecks may find the going a little rougher this time. Coach Sixt Morley has lost four regulars, including Ron Nickerson, 6-7 center. Nickiewicz has completed his 12 quarters of eligibility and Gene Tolbor and forward Marshall Stoner have graduated. Key returnee for Western is Chuck Schramm, 6-7 center and forward.

Illinois Normal, Southern and Eastern Illinois are expected to be Western's top challengers for the cage crown. Northern, Eastern Michigan and Central Michigan may make strong bids to move up in the standings, but none are likely to finish among the top three.

Illinois Normal will field a tall and well-balanced squad paced by forward Fred Marberry, the league's most-valuable cager last season. Marberry has scored 1,439 points in his three seasons as a regular. The return of forward Eric Robinson, indelible last season,

## Opium Pit Ties For 2nd Spot In Indie Bowling

The Opium Pit aggregation roared to a evening high 3509 total as they conquered Chautauque Co-op in the full set in the independent Students bowling action last week and moved into a share of the runner berth for their efforts. Jan Loefgren and Gay Whitney sparked the winners with 533 and 472 in that order, while Ted Nicwicki topped the victims efforts with 486.

Strains Residence and Brown Jug rolled to a draw with the former winning the nightcap by five pins and dropping the series 235 to 237. Dean Haier's 502 topped the laurels for the pair of alleys.

Doyle Dormitory came from behind after being nose out for its first two games to take a split decision from Thompson Point in the strength of Bill Eidson's 512 series. Ken Hull and Bob Burns shared the scoring spotlight on Thompson Point with 469 and 463, respective efforts.

In a low scoring session, Dale Boudreau belted a 496 set for the brightest performance on the night of alleys, but his Newman Club No. 1 quintet was on the losing end of a 3 to 1 decision to Boudreau Club.

**Team High Three Games**  
Opium Pit 2509  
Doyle Dormitory 2377  
Brown Jug 2372

## Faculty Tickets

For faculty and staff of the university, a season ticket can be purchased for \$6.00. Also, there is a family ticket plan. Season tickets will end Dec. 5.

SIU students and season ticket holders will be admitted to the area game at Herrin on Dec. 19 free of charge.

The Salukis host powerful, Pitt Leonard Wood for the opening cage tilt on Dec. 6.

Number of the home game, name of the visiting team and the dates are as follows:

Game 2—Midwestern of Texas, Dec. 10; Game 3—Eastern Michigan, Dec. 14; Game 4—central Michigan, Dec. 15; Game 5—Baker University of Kansas, Jan. 5; Game 6—Beloit College, Jan. 10; Game 7—Northern Illinois, Jan. 12; Game 8—Millikin University, Jan. 28; Game 9—Eastern Illinois, Feb. 14; Game 10—Illinois Normal, Feb. 22 and Game 11—Western Illinois, Feb. 23.

Varsity games will start at 8:15 p. m. and JV tilts will start at 6:15 p. m.

**NOW!**  
NO DOWN PAYMENT  
FIRST PAYMENT IN  
FEBRUARY

**The Practical Lifetime Gift!**

Buy Now!  
MAKE NO PAYMENT UNTIL FEBRUARY... THEN PAY \$1 A WEEK!

**The REMINGTON Quiet-riter**

**STILES OFFICE SUPPLY**  
404 S. Ill. Carbondale, Illinois PH. 517-L

**VISIT RAY'S JEWELRY**  
and see the exclusive new lines of Spidel Men's Jewelry

- Watchbands • Cuff Links • Tie Clasp

**RAY'S JEWELRY**  
214 S. Illinois 121 N. Washington

**EVER GET A LOOK LIKE THIS FROM HER?**

Maybe You Need to Change Barber?

Have You Visited  
**The Walnut Street BARBER SHOP**  
Corner Illinois and Walnut  
"Get the Best"

"30c WASHES A LOT OF CLOTHES AT TODD'S SELF-SERVICE LAUNDROMAT"

**Students Only**

LEAVE YOUR DRY-CLEANING WITH US, THEN USE WASHERS FREE

**SHIRTS FINISHED!**

**Todd's SELF SERVICE!**

"Not Just Fair They're The Kind You'll Love to Wear!"

**LAUNDROMAT**  
3 DOORS WEST OF POSTOFFICE

**Western Electric**

Special Attention  
**MID-TERM GRADUATES**

has openings in Suburban Chicago for  
**COLLEGE GRADUATES**  
ANY FIELD as TRAINEES

To plan and assist in engineering telephone exchange equipment. Applicants should have an interest or experience in electrical circuit. Electrical background such as military communications would be helpful. If you qualify you will be given on-the-job training to better equip you for this interesting engineering career.

Also GRADUATE ENGINEERS  
For our new plant in OMAHA, Neb., and for positions in SUBURBAN CHICAGO, DULUTH-LINCOLN.

Creative development and planning of new manufacturing processes, machines and techniques.

**ATTRACTIVE SALARIES**

Career opportunities to share in the new developments of the constantly growing communications field. Excellent pension plan, paid vacations and many other benefits at no cost to employee.

**WESTERN ELECTRIC, CHICAGO, ILL.**

Enjoy driving with these... **CHICAGO Used Cars**

EVERY CAR ON OUR LOT HAS PASSED THE 10-POINT SAFETY CHECK

- 53 Chevrolet 210 4-door 6 cylinder, Powerglide.
- 56 Chevrolet 210 4-door, V-8 Station Wagon, Powerglide.
- 56 Chevrolet Bel Air Sport Coupe 6 Cylinder. Less than 2000 Miles.
- 54 Chevrolet Bel Air Sport Coupe, Powerglide, Power Brakes, One Owner.
- 53 Chevrolet V-8 4-door, one owner, very clean.
- 54 Ford V-8 4 door, Customline, Top Condition.
- 55 Ford V-8 Victoria Hard Top, Automatic Transmission, Dual Exhaust, Radio, Heater.
- 53 Plymouth Cranbrook 2-door, one of our best used cars.

**CONVENIENT CREDIT TERMS ARRANGED**

**Down State**  
PHONE 300 CARBONDALE PHONE 301