

2015

End Matter

Jorge L. Díaz-Herrera Ph.D.
President, Keuka College, jdiazh@keuka.edu

Follow this and additional works at: <http://opensiuc.lib.siu.edu/jasa>

Recommended Citation

Díaz-Herrera, Jorge L. Ph.D. (2015) "End Matter," *Journal of Applied Sciences and Arts*: Vol. 1: Iss. 1, Article 5.
Available at: <http://opensiuc.lib.siu.edu/jasa/vol1/iss1/5>

This Article is brought to you for free and open access by OpenSIUC. It has been accepted for inclusion in Journal of Applied Sciences and Arts by an authorized administrator of OpenSIUC. For more information, please contact opensiuc@lib.siu.edu.

Call for Submissions:



Journal of Applied Sciences and Arts

THE JOURNAL FOR PROFESSIONALS

CALL FOR PAPERS

The Journal of Applied Sciences and Arts (JASA) is a peer-reviewed journal to publish use-driven research and creative outcomes in the areas, related but not limited to:

- ✓ **Allied Health:** Dental Hygiene, Radiologic Sciences, Mortuary Sciences; Health Care Management; Nursing; Occupational Therapy; Health Informatics; Bioinformatics
- ✓ **Architecture:** Art and Design; Interior and Fashion Design; Digital Architecture
- ✓ **Automotive Technology:** Computerized Engine Controls; Advanced Emissions Controls; Autonomous Vehicles
- ✓ **Aviation Management and Flight:** airports and airlines, and manufacturers and general aviation companies; aviation business analytics
- ✓ **Aviation Technologies:** Flight systems and avionics; Digital flight and avionics
- ✓ **Information Systems and Applied Technologies:** Information Technology; Information Assurance and Cybersecurity; Web And Mobile Applications; Big Data Analytics; Informatics; Electronic Systems; Technical Resource Management
- ✓ **Digital Humanities:** Digital Storytelling; Digital communications; Social Networks; Digital Anthropology; Digital Archeology
- ✓ **Digital Education:** Digital Classes; MOOCs; Digital Learning

The Journal of Applied Sciences and Arts (JASA) seeks scholarly contributions to inform the practical application of the Sciences and Arts in solving complex societal problems in the areas listed above and more. We make the distinction between basic research and applied research by following the use-driven research paradigm advanced by Donald Stokes in "Pasteur's Quadrant: Basic Science and Technological Innovation:" a model of research done carefully, i.e., good science, but motivated by specific practical needs, hence referred to as need-driven or use-driven.

The Journal of Applied Sciences and Arts (JASA) supports a liberal arts-based professional education through experiential learning to empower graduates to be exemplary citizens and leaders in today and tomorrow's global, digital wider world.

<http://research.asa.siu.edu/journal>

Important Dates

SUMMER ISSUE

Submission: January 15
Author Notification: March 15
Revision Due: April 15
Final Submission: May 31
Publication: June 30

WINTER ISSUE

Submission: July 15
Author Notification: Sept. 15
Revision Due: October 15
Final Submission: November 15
Publication: December 30

Submissions

All papers are subject to blind review. Please remove any identifying information from the paper prior to submission.

All submissions must be original work that has not been published or is currently under consideration for publication by another journal.

Email submission to jasa@siu.edu

Editor-in-Chief

Dr. Jorge Díaz-Herrera
Keuka College, NY
jdiazh@keuka.edu



Call for Submissions:

Call for Workshops and Panels | Research | SIU

CALL FOR WORKSHOPS AND PANELS

Welcome to the 2015 Applied Sciences and Arts Symposium Research Abstract (ASA) and Session Proposal Submission Site!

This interdisciplinary Applied Sciences and Arts (ASA) symposium is a collaborative effort in conjunction with Southern Illinois University Carbondale (SIUC) College of Applied Sciences and Arts, SIUC Center for Undergraduate Research and Creative Activities (CURCA), and the Journal of Applied Sciences and Arts (JASA), which supports a liberal arts-based professional education through experiential learning to empower graduates to be exemplary citizens and leaders in today and tomorrow's global society.

The ASA symposium seeks scholarly contributions to inform the practical application of the Sciences and Arts in solving complex societal problems in the areas listed below and more. We make the distinction between basic research and applied research by following the use-driven research paradigm advanced by Donald Stokes in "Pasteur's Quadrant: Basic Science and Technological Innovation:" a model of research done carefully, i.e., good science, but motivated by specific practical needs, hence referred to as need-driven or use-driven.

We invite participants and presenters to share their research, practices, and innovations that foster interdisciplinary and multidimensional applications of knowledge and integrative sharing through common themes, mediums, and discourses. We encourage submissions from professional practitioners, industry leaders, educators, researchers, designers, and graduate students. We hope you will join us at Southern Illinois University, Carbondale, Illinois, USA to experience various multi-disciplinary interactions associated within the Applied Sciences and Arts.

The Applied Sciences and Arts symposium coordinators invite application-driven research and creative outcomes in the subject areas, related but not limited to:

Allied Health: Dental Hygiene, Radiologic Sciences, Mortuary Sciences; Health Care Management; Nursing; Occupational Therapy; Health Informatics; Bioinformatics

Architecture: Art and Design; Interior and Fashion Design; Digital Architecture; Fabrication and Production, Urban Design, Applied Building Technologies

Automotive Technology: Computerized Engine Controls; Advanced Emissions Controls; Autonomous Vehicles, Production and Parts Industries, Unmanned Aircraft, Automation

Aviation Management and Flight: Airports and Airlines, Manufacturers, General Aviation Companies; Aviation Business Analytics; Safety and security; Airport Management and Policy

Aviation Technologies: Flight Systems, Digital flight and Avionics

Information Systems and Applied Technologies: Information Technology; Information Assurance and Cybersecurity; Web And Mobile Applications; Big Data Analytics; Informatics; Electronic Systems; Technical Resource Management; Infrastructure

Digital Humanities: Digital Storytelling; Digital communications; Social Networks; Digital Anthropology; Digital Archeology

Digital Education: Digital Classes; MOOCs; Digital Learning



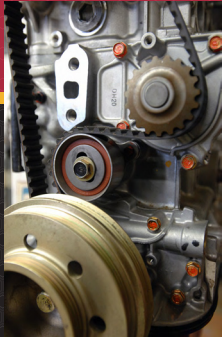
For more information: <http://research.asa.siu.edu/symposium/index.php>

CASA Research

ASA Symposia: Past

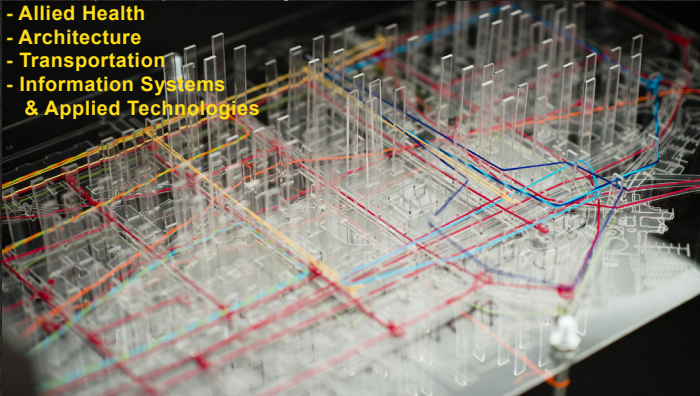
2014

Applied Sciences and Arts Multidisciplinary Research



The symposium is open to faculty, professionals, and students from any discipline or university. The various sessions feature presenters, posters, and panel discussions from multiple disciplines including, but not limited to the schools of:

- Allied Health
- Architecture
- Transportation
- Information Systems & Applied Technologies



For more info about the College of Applied Sciences and Arts research activities go to: [CASA Research website \(research.asa.siu.edu\)](http://research.asa.siu.edu)

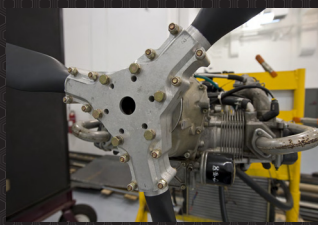


For more info about this event, go to the [CASA symposium website \(research.asa.siu.edu/symposium\)](http://research.asa.siu.edu/symposium)

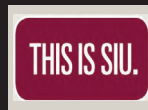
Saturday, November 22, 2014
In the Student Center's
Kaskaskia and Missouri Rooms

Tentative Agenda (subject to change)

- 9:00am Registration and Refreshments
- 9:30am - Welcome
- ASA Dean Andy Wang, Provost Susan Ford, VCR Jim Carvey, OSPA Director Wayne Glass
- 9:45am Panel 1: **Multidisciplinary Research and Teaching**
- CASA Chairs & Directors (Moderator: Dean Andy Wang)
 - Scott Collins, Allied health
 - Walter Wendler, Architecture
 - Michael Behrmann, Automotive Technology
 - Jose Ruiz, Aviation Management and Flight
 - Michael Burgener, Aviation Technologies
 - Sam Chung, Information Systems & Applied Technologies
- 10:45am Break
- 10:55am
- Session 1 (Chair: Jennifer Sherry) - 3 Presentations
- Session 2 (Chair: Karen) - 3 Presentations
- 12:00pm Lunch + Poster Session
- 1:30pm Keynote Speaker
- Dr. Rodrigo Carramiñana, Director of CURCA
- 2:30pm Break
- 2:40pm
- Session 3 (Chair: Tom Shaw) - 3 Presentations
- Session 4 (Chair: Craig Anz) - 3 Presentations
- 3:50pm Break
- 4:00pm
- Session 5 (Chair: TBA) - 3 Presentations
- Panel 2: Promotion & Tenure in ASA (Moderator: Craig Anz with Invited Associate Professors from different CASA units)
- 4:45pm Closing Remarks (Dean Andy Wang)
- Student Poster Award - Sponsored by Dr. Rodrigo Carramiñana, Director of CURCA - 1st Place (\$100) and two runners-ups (\$50 each)



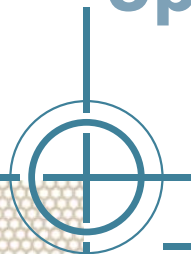
Sponsored by:
SOUTHERN ILLINOIS UNIVERSITY CARBONDALE
College of Applied Sciences and Arts



<http://www.asa.siu.edu/>

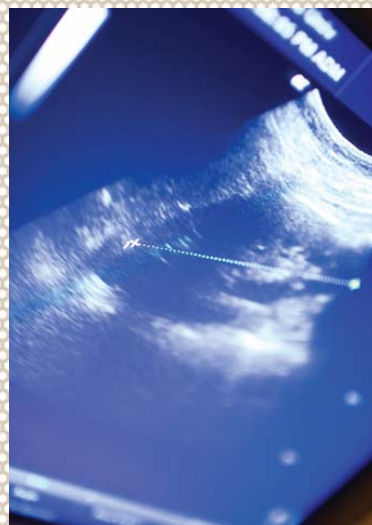
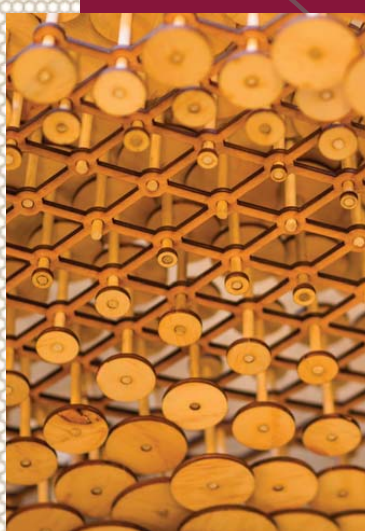


ASA Symposia: Upcoming 2015



ASA

Applied Sciences and Arts Multidisciplinary Research



Symposium

Saturday November 21st

The symposium is open to all professionals and all faculty and students from any university. The sessions will feature presentations, posters, and panel discussions exploring the following disciplines:

- Allied Health
- Architecture
- Automotive Technology
- Aviation Management and Flight
- Aviation Technologies
- Information Systems & Applied Technologies

Paper submission deadline:
Monday, August 17, 2015

Acceptance notification date:
Monday, September 21, 2015

For more information about the symposium and other research activities please visit the CASA Research website at:



research.asa.siu.edu/symposium

SIU Southern Illinois
University
CARBONDALE

Sponsored by Southern Illinois University - Carbondale and The College of Applied Sciences and Arts

Sponsors:

SIU SOUTHERN ILLINOIS UNIVERSITY
CARBONDALE **COLLEGE OF APPLIED SCIENCES AND ARTS**

Your future may be closer than you think...

Whether you are pursuing an associate, bachelor, or graduate degree, we help you reach your full potential with our hands-on learning opportunities. Our graduates are in high demand, with more than 80% in jobs in their field within the first 6 months of graduation.



Daniel Lustman, SIU Freshman
Aviation Flight, CCHS '12

Associate Degrees

- Aviation Flight
- Physical Therapist Assistant

Bachelor's Degrees

- Automotive Technology
- Architectural Studies
- Aviation Management
- Aviation Technologies
- Dental Hygiene
- Electronic Systems Technologies
- Fashion Design & Merchandising
- Fire Service Management
- Health Care Management
- Information Systems Technologies
- Interior Design
- Mortuary Science & Funeral Service
- Radiologic Sciences
- Technical Resource Management

Master's Degrees

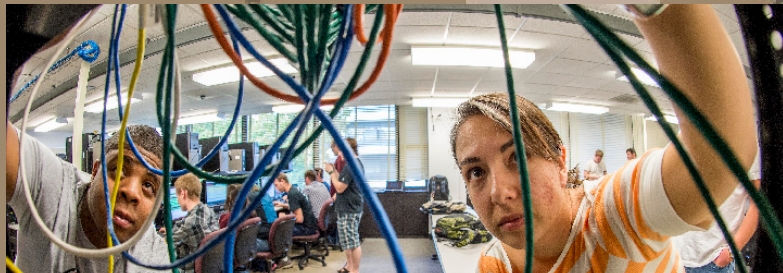
- Architecture
- Fire Service and Homeland Security
- Medical Dosimetry
- Public Administration: Aviation

CHARTING COURSES



Josh Lindberg, Investigator with the National Transportation Safety Board (NTSB) SIU Aviation Management 2012, CCHS '07

LAUNCHING CAREERS



www.asa.siu.edu

Sponsors:




WHY SIU? OUR FACULTY.

**WE BRING IN THE BEST —
TO BRING OUT THE BEST.**

OUR FACULTY INCLUDES SOME OF THE MOST CITED EXPERTS IN THEIR FIELDS. THEY COME TO SIU, DRAWN BY OUR REPUTATION FOR RESEARCH, THE UNDERSTANDING THAT THEY WILL HAVE THE FREEDOM TO PURSUE THEIR IDEAS, THE KNOWLEDGE

THAT THEY WILL HAVE AN ENTIRE TOP-TIER RESEARCH UNIVERSITY BEHIND THEM, AND THE ASSURANCE THAT THEY WILL ALSO HAVE INCREDIBLE EXPERIENCES TEACHING A NEW GENERATION. WE SELECT THEM FOR THEIR PASSION, THEIR DRIVE. WE INVITE THEM TO STUDY IN A CULTURE THAT BUILDS RELATIONSHIPS ACROSS DISCIPLINES. THEN WE REMOVE ANYTHING THAT STANDS IN THEIR WAY. AND THEY CONSTANTLY IMPRESS US.



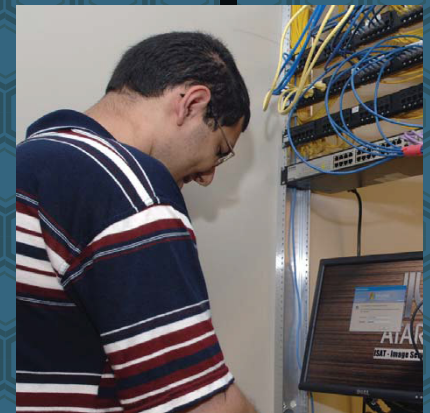
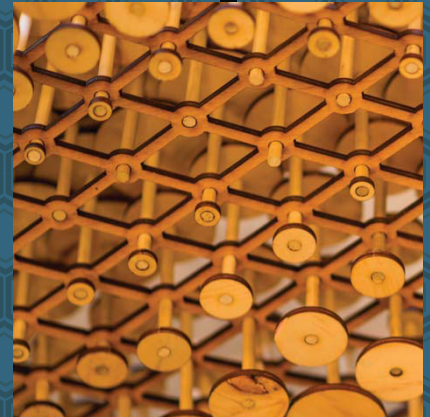
Your Ad Here:

Please contact the jASA coordinators for information regarding sponsorship and advertising.



IN THIS Issue

- 1 Debating the Merits of Design/Build - Assessing Pedagogical Strategies in an Architectural Technology Course**
- 2 Transportation Conditions and Solutions in Carbondale, Illinois**
- 3 Protecting Educational Laboratory Equipment from Operator Error Using a Qualitative Research Approach**



Journal of
Applied Sciences and Arts