

1-23-1953

The Egyptian, January 23, 1953

Egyptian Staff

Follow this and additional works at: http://opensiuc.lib.siu.edu/de_January1953

Volume 34, Issue 28

Recommended Citation

Egyptian Staff, "The Egyptian, January 23, 1953" (1953). *January 1953*. Paper 3.
http://opensiuc.lib.siu.edu/de_January1953/3

This Article is brought to you for free and open access by the Daily Egyptian 1953 at OpenSIUC. It has been accepted for inclusion in January 1953 by an authorized administrator of OpenSIUC. For more information, please contact opensiuc@lib.siu.edu.



THE FOUR freshman members of the Student Council as elected: Barbara Beadle and Jan Evans standing — Jerry McIntosh and Andy Marcoe.

ISA To Nominate Campus Sweetheart This Monday

Nominations for the campus ISA Sweetheart will be held this Monday in room 209 of Old Main. The lucky girl who is named winner of the sweetheart contest will represent the local ISA at the national ISA Convention at Purdue University in Lafayette, Ind., April 22-25.

All ISA students may attend the meeting Monday to nominate girls for candidates in the contest. Requirements for candidates are as follows: (1) She must be a member of the ISA. (2) She must be present at the meeting Monday. (3) She must have an ISA membership number. (4) She must have poise, personality, and beauty.

The winner of the contest will be crowned ISA Sweetheart at the local Independent Students' Week which has been scheduled for the week of Feb. 16. The identity of the Sweetheart will be kept secret until the night of the dance, highlight of the week's activities, which will be on Feb. 20.

Payne Designs Plastic Animal Play Costumes

Containing a dinosaur and a mammoth might be a puzzling bit of stage "business". The problem of outfitting the two prehistoric animals in their own skins for the winter term play, has been solved by Darwin Payne, senior art major.

Payne, also a cast member, is designing costumes for the animals from flexible plastic fabric. Action of the play to be given in Shrock auditorium on Jan. 29, 30, and 31 shins from prehistoric ages to the flood to modern times. Characters will be dressed in semi-symbolic costumes throughout the play.

Members of the props committee are creating a replica of the original wheel and gathering red silk stockings, a ragoon coat, a dinosaur bone, and a 1909 bathing suit for the play. Carolyn Reed, Loren Alonzi, and Bobbie Grimes are in charge of the props committee.

Donors For ROTC Blood Drive Must Register Today

Registrations for blood donations are being accepted at Southern according to Capt. Paul Lunde of the AR ROTC department. Only 70 pledges had been received at the ROTC office by 5 p. m. last Tuesday. This figure includes the 100 per cent enrollment of the 54 members of the department precision drill team, the Queen's Guard.

A total of 400 pledges must be secured in order to insure the quota of 350 pints of blood set for the drive. This margin is necessary because a portion of the pledges may be unable to donate because of cold or other illness.

Students and faculty members who wish to give blood must register with Capt. Lunde at the ROTC before tomorrow. Students between the ages of 18 and 21 must secure the signatures of their parents or guardians on blanks obtained at that office and return them before tomorrow or they will be unable to donate.

Song Entries Due Feb. 2

Feb. 2 is the deadline for submission of entries in the pep song contest. Entries may be submitted to the Egyptian office or in the Editor's box in the cross halls of Old Main or the Office of Student Affairs.

Empty blanks may be obtained from the Office of Student Affairs, the Student Center, or the Egyptian Office. All students, faculty members, alumni, and employees of SIU are eligible for the contest, and the winners will receive a \$50 award.

AP0 To Launch Dimes Campaign Here Tuesday

With the explosion of an aerial bomb Tuesday at 9:30 a. m., Southern's annual "Line of Dimes" drive will be launched by the Alpha Phi Omega as a special feature of the March of Dimes campaign. At that time the first dimes will be laid on the line which will run from the main gate to the steps of Old Main.

Practices Begin For Variety Show

After the first two troupes for the Theta Xi All-School Variety show, and with four practices scheduled to begin soon, the steering committee for the annual presentation is more certain than ever that this year's show will be "better than ever."

Speaking of the committee, Kahmann said, "We chose this group because we feel they will be impartial in their voting, and also because they are closely associated with student affairs."

All students possessing theatrical talent are invited to try out for the show. The Variety Show is strictly Southern talent, and in order to be that, a good representation of students is necessary. Proceeds of the show are donated each year to Southern charities.

Tickets for the show can be purchased from any Theta Xi member. Advance tickets are 50 cents, and tickets at the door will be 60 cents. Tickets are also on sale at the watch display in the crosshalls of Old Main.

Orders for SIU Class Jewelry Due by Jan. 30

January 30 has been set as the deadline for ordering any university class jewelry, which consists of seven types. The types available include four styles of rings, a key fob, a necklace, and a pin. Ring come in all metal, ruby setting, black copy setting, or blue sapphire setting. Each style of ring may be obtained in either men's or women's sizes.

Woody Hall To Reflect Disney Plan Color Schemes According To Room's Lighting

The inside of Woody Hall, the new girls' dorm, is going to be as colorful as a Walt Disney production. The four-story "U" shaped building, consisting of Unit "A," "B," and "C," has 422 beds — 211 beds, each with two bunks in each room, housing two girls in each. Even the most pompous of Cuckoo Club should be satisfied with the color schemes in these bedrooms.

Residence Halls Plan Open House

The Men's Residence Halls will hold their second annual open house Thursday, Jan. 29, from 7:30 to 10 p. m.

Applications Due For Publications

All students who are interested in filing applications for editorial positions on the Egyptian and Obelisk are reminded to do so before the deadline date which is near Friday, Jan. 30.

Flu Epidemic Hits Southern, Jackson County

An epidemic of flu has hit SIU according to the Health Service. About four hundred cases have been turned in to the Health Service, SIU, however. The Jackson County Health Organization called a meeting to discuss it this week. It was decided that although there was serious possibility of one, an epidemic had not yet been reached.

One ISA, Four Greeks Win Campus Election

Carroll Cox, Newgreek candidate, received 166 votes in Tuesday's elections for Spring Festival chairman over Deaver Park's 97 votes. Deaver Park was defeated by 69 votes.

Runners-up in the election were Mary Lou Merritt with 62 votes, Dick Schmitz with 54 votes, Linda McCrez with 53 votes, and Allan Erickson with 53 votes.

Intosh will serve on the Council to replace the members appointed by the Personnel Deans this last fall. Incidentally, Evans will be replacing herself as she was one of those appointed.



Carroll Cox

Career Meet To Feature Job Interview Session

Education spiced with humor will be a feature of the Career Conference which is scheduled for Feb. 10-11 for all SIU students. Such sessions will be brought out in the "Here's Your Job Interview" session which will start off the activities of the second day of the conference.

over the interview session. They will be assisted by two students, Mildred Schmitt and Paul Morris.

Orders for any of the jewelry should be made by Jan. 30 at 344½ Highways, on North Illinois avenue. A digit from which students may choose the type of jewelry they want is available at Highways.

ONE of the 211 rooms in Woody Hall, the new girls' dormitory. This room is completely furnished for the exception of drapes and mattresses on the two beds, parts of which are shown in the foreground corner.

Even the most pompous of Cuckoo Club should be satisfied with the color schemes in these bedrooms.

Even the most pompous of Cuckoo Club should be satisfied with the color schemes in these bedrooms.

Even the most pompous of Cuckoo Club should be satisfied with the color schemes in these bedrooms.

Student Council elections held in conjunction with the Spring Festival chairman elections.

Cox, senior from Palmira, will direct the plans and preparations for the annual Spring Festival week-end which is scheduled for May 1 and 2. He is former treasurer and now president of Theta Xi fraternity. He is a member of the Sphinx Club, Southern's honor society for students who have done outstanding work in extra-curricular activities.

In the Council elections Jerry McIntosh, pre-engineering major from Mt. Carmel, received 69 votes to tie with Andy Marcoe, agriculture major from East St. Louis. Jerry McIntosh was the lone ISA winner.

The two girl representatives to the Student Council will be Barbara Beadle, Carbondale, and Jan Evans.

Flu Epidemic Hits Southern, Jackson County

An epidemic of flu has hit SIU according to the Health Service. About four hundred cases have been turned in to the Health Service, SIU, however. The Jackson County Health Organization called a meeting to discuss it this week. It was decided that although there was serious possibility of one, an epidemic had not yet been reached.

The flu has confined itself to SIU, however. The Jackson County Health Organization called a meeting to discuss it this week. It was decided that although there was serious possibility of one, an epidemic had not yet been reached.

DR. RASO states that although several grade and high schools have been closed, there is no indication that SIU will close down. There is a sharp increase in the number of cases and one third of the school is out, we would probably close. This is highly improbable, however.

The FIRST serious epidemic of Spanish Influenza in the U. S. was in 1918. It raged nationwide and a great many people died, as there have been in low incidence times since. The danger here since has been considerably reduced by the discovery of the new "vaccine" drug.

DR. Raso stated that all students should go in bed immediately if they think they should be reported to the Health Service, so that an absence from class will be explained.

Flu Epidemic Hits Southern, Jackson County

An epidemic of flu has hit SIU according to the Health Service. About four hundred cases have been turned in to the Health Service, SIU, however. The Jackson County Health Organization called a meeting to discuss it this week. It was decided that although there was serious possibility of one, an epidemic had not yet been reached.

DR. RASO states that although several grade and high schools have been closed, there is no indication that SIU will close down. There is a sharp increase in the number of cases and one third of the school is out, we would probably close. This is highly improbable, however.

The FIRST serious epidemic of Spanish Influenza in the U. S. was in 1918. It raged nationwide and a great many people died, as there have been in low incidence times since. The danger here since has been considerably reduced by the discovery of the new "vaccine" drug.

DR. Raso stated that all students should go in bed immediately if they think they should be reported to the Health Service, so that an absence from class will be explained.

Flu Epidemic Hits Southern, Jackson County

An epidemic of flu has hit SIU according to the Health Service. About four hundred cases have been turned in to the Health Service, SIU, however. The Jackson County Health Organization called a meeting to discuss it this week. It was decided that although there was serious possibility of one, an epidemic had not yet been reached.

DR. RASO states that although several grade and high schools have been closed, there is no indication that SIU will close down. There is a sharp increase in the number of cases and one third of the school is out, we would probably close. This is highly improbable, however.

The FIRST serious epidemic of Spanish Influenza in the U. S. was in 1918. It raged nationwide and a great many people died, as there have been in low incidence times since. The danger here since has been considerably reduced by the discovery of the new "vaccine" drug.

DR. Raso stated that all students should go in bed immediately if they think they should be reported to the Health Service, so that an absence from class will be explained.



CONSTRUCTION on the addition to the Student Center, which is shown above, is hoped to be completed by the beginning of spring term. This interior will be decorated in contemporary style employing modern furnishings, paint schemes, and fabrics to harmonize with the front wall which will be made entirely of glass.

Southern Society



ANTHONY HALL girls and their guests attended the annual winter dance last Friday night at the Hall. Special entertainment and dancing were the orders of the evening. Co-chairmen for the dance were Nancy Spomer and Carol Henderson.

An all-Hall party was held after 10:30 Wednesday night. Chairman for the pancake supper to be held later this month are Vice-president Phyllis Owen and Linda Jaquith. Historian, have resigned their positions as they will not be living at the Hall spring term. Election will be held Monday night to fill these offices.

Alum Connie Perrin talked to several of the Hall girls Tuesday night when she called from California, where she is employed.

JOHNSON HALL elected Barbara Rose and Marjorie Parker co-chairmen for the ball's act in the Theta Xi Variety Show.

A piano has been purchased for the lounge. Norma Lovell, Jo Clayton, and Betty Mangray have been appointed to decide upon a place for it and any regulations needed to care for it.

Leona Roper, alum, was a guest of the hall last week-end.

SIGMA SIGMA SIGMA will launch the winter social season with

Do You Know That . . .
PARTICULAR PEOPLE REFER EERLESS
CLEANERS
207 W. Walnut Phone 637

College Day Every Friday
Students-Faculty
Show your activity ticket and get a large discount.
3c a Gallon Less Than Our Regular Price

Nearman's Dixcel Service
413 E. Main

CLASSIFIED ADVERTISING
RATES: 5c per word with minimum charge of 50c.
LOST: Blue Denim purse containing billfold, keys, etc. Reward: Call Lynn Montgomery, 354-Y.

Student Center Holds All-School Mixer Tonight

Dancing, games, and cards will highlight the Student Center's "mixer" Friday night, Jan. 23 from 8 until 11 p. m. Refreshments will be served during the evening.

Alum Renorted Killed in Korea

Lt. Harlan P. Hall, 1940 graduate of SIU, has been reported killed in action in Korea by the Defense Department earlier this week. The lieutenant, a bombardier with a medium bombing squadron based in Pusan, Korea, was reported missing a week ago. A veteran of World War II, he had flown more than thirty missions since being recalled into the service last March.

Southern Is Host To Speech Meet

Two hundred high school students visited campus this last weekend when they met here for the third annual High School Speech Festival. The group represented five Southern Illinois communities.

The festival was sponsored by the SIU speech department and was managed by Pi Kappa Delta honor society fraternity, with Carolyn Reed serving as chairman.

Awards were presented in ten categories. Du Quoin ranked highest in the number of superior and excellent awards with seven superior and three excellent awards.

Next high was Carbonade with five superior awards and two excellent. Granite City had four entrants who received superior ratings and three who received excellent ranking. Harshing had four superior awards and West Frankfort had one superior and one excellent.

Psychology Group To Present Play Monday
"Scattered Showers", a play about three different types of mothers and their influence in the home, will be presented on Monday, Jan. 26.

The play, which is being sponsored by the psychology club, will begin at 7:30 p. m. in room 303 of the Allen building.

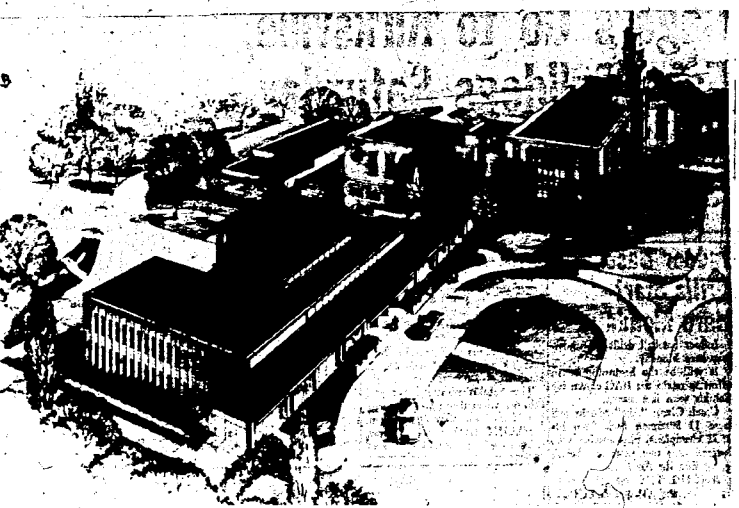
The three mothers are portrayed by three faculty members' wives, Mrs. Al Croft, Mrs. Jesse Kennedy, and Mrs. Abraham Mark.

The play will be presented to the public on several occasions in the near future, but Monday night will be the first showing.

Refreshments will be served, and everyone is invited to attend.

BSU Releases Chapel Speakers For Week
The chapel schedule for the week of Jan. 26-30 for the Baptist Student Union is as follows:

MARRIAGES
Marlene Messeri, 700 Club; to Clarence Haberman, SIU.
Joy Fry, 700 Club; to George E. Cannon, A.F.



THE PRESENT University education and physical education wing now under construction as drawn by the architect.

Two Pools Featurize Training School Wings

Two swimming pools, a general industrial education shop, and an art room are the features of the new wings now under construction for University School.

The new additions should be ready for occupancy by Sept., 1954, according to John D. Mees, principal of the school.

The small swimming pool will be used for teaching swimming in the lower grades. Elementary and high school teachers will learn swimming in the large pool.

The large pool will also be used for training of student teachers in swimming and therapeutic work. Men and women's physical education departments will also make use of the large pool for teaching swimming to SIU students.

THE INDUSTRIAL education shop is being designed primarily to give student teachers training in teaching general shop.

in the shop will be facilities for woodshop, auto mechanics, metal shop, graphic arts, electricity, etc.

Arts and crafts will dominate the program of the elementary shop. Seventh and eighth grades will receive general training in metal shop, woodshop, graphic arts, etc.

The elementary shop will be made available to any teachers that desire to make use of it to more thoroughly integrate the training program.

A consultant will be available to work with the supervisors and student teachers to make best use of the program.

ALL GRADE school students will have required art under the new facilities in the school, and high school students will have art courses as electives.

Ceramics will also be a part of the art program in the high school, and it is hoped that the lower grades may have ceramics training, too.

Two student teachers will be available in part of the new addition. Four years of high school agriculture courses will be available.

Dr. Mees also expressed a hope that a course in general agriculture may be offered to all students as an elective.

IN AGRICULTURE shop boys will be given training in repair of farm machinery, welding, metal forging, and various other phases of shop work related to agriculture.

This new program will provide valuable training for student teachers in the agriculture program.

Falling out of windows is the commonest accident for youngsters under five.

FTA Appoints Projects For Spring Projects
The Future Teachers of America had its first business meeting of the year last week in the Studio Theatre of University School.

A program and publicity committee and a spring rally committee were formed. Members serving on the program and publicity committee are Dorothy Kelleman, chairman, Barbara Graham, Josephine Flannery, Darlene Woodside, and Geraldine Pleasant.

Members serving on the spring rally committee are: Jack Sisler, chairman, Jim Gillham, Bill Bauer, Cary Meyer, and Gary Mahan.

Two films, "House Mama" and "America, the Beautiful," were shown.

The next regular meeting will be Tuesday, Feb. 3.

Don't Forget!

YOUR ADVERTISING DOLLAR GETS THE LAST Full Measure

OF VALUE

WHEN PLACED IN THE EGYPTIAN

Largest College Semi-Weekly in Illinois

CIRCULATION 3300

WRITE OR CALL OUR BUSINESS MANAGER AND WATCH YOUR SALES CLIMB

PHONE UNIVERSITY EXTENSION 266

Remember with Flowers

DAVISON & ROBERTS

FLORISTS

212 E. Main Ph. 1277

YELLOW CAB

Quick, Reliable Service Running All Points

35c

Phone 68

Cagers Go to Kirksville, Face Bulldogs Saturday

Southern's Salukis leave this afternoon for Kirksville, Mo., where they will meet Northeast Missouri. Tuesday afternoon night in the first of three non-conference games.

Coach Lynn Holder probably will use the same starting lineup with which Southern has won its last two games.

Indoor Baseball Drills Start Here Monday

Indoor baseball drills get underway here Monday.

It will be the beginning of an effort to retain the IAC crown the Salukis won last season.

Coach Glenn "Albe" Martin will have 11 lettersmen back from his 1952 champions, plus another who earned two varsity spots before going into the force.

Among the returning regulars is Southpaw Wayne Grandcolas, an All-IAC pitcher last year. Grandcolas, a junior from Belleville, has had one year's decision in his pitching career at SIU. He has a 4-1 record his freshman season and last year won nine straight victories.

Ronnie Hagler, Martin's No. 2 hurler last year, has left school but Dave Thompson, another graduate of Belleville high, has returned to strengthen the staff. Thompson, a junior now, won two letters before going into service and was a second team all-conference selection his freshman year.

'Rip' Still Tops In Cage Scoring

Halfway through the season Rip Rippelmeyer is still top scorer for the Salukis.

The Valmeyer sophomore has scored 186 points in 12 games for an average of 15.5 per game. His total is only three less than he collected in 23 games last year when he averaged 8.2 points per game.

RIPPELMAYER is shooting 337 on 62 baskets in 184 shots. He has 62 free throws in 80 chances for a .775 percentage. Rippelmeyer is also the team's top rebounder with 136. Center Chuck Thies is second with 122.

Bob Nickolaus has moved into second place in scoring with 138 points, or an average of 11.5 a game. Harvey Welch, who played with Nickolaus at Centralia high school, is now third with 134 points, an average of 11.1.

Thies is fourth in scoring with an even 100 points for an average of 8.3.

GIB KURTZ, who injured his ankle three games ago, is fifth with 99 points, one more than John Cherry.

Cherry, an off-and-on starter until Kurtz was hurt, has scored an average 14 points in his last three games. His season's average for 12 games is 8.1.

Jacque Theriot has 66 points for an average of 5.5. Freshman Jack Morgan, who has seen action in recent games, has 16 points.

AS A TEAM Southern is averaging 71.2 points per game compared with the opposition's 68.9. The Salukis are shooting .321 from the field and .670 on free throws.

All of Southern's top seven men are shooting over .300 except Welch, whose percentage is .276. Theriot has .258, Thies .250, Cherry .246, Rippelmeyer .237, Nickolaus .215, and Kurtz .205.

Morgan has hit 6 baskets in 13 shots for a percentage of .461.

three games: Bob Nickolaus and Rip Rippelmeyer at forwards, Charles Thies at center, Harvey Welch and John Cherry at guards.

THE SALUKIS will be after their ninth win in 13 starts and their third victory over the Kirksville Bulldogs. SIU has won both of its previous games with Northeast Missouri.

The Bulldogs have six lettersmen back from last year's team that won 12 games and lost seven.

Southern's starting line-up includes Missouri of Cape Girardeau Tuesday and travels to Evansville, Ind., next Thursday. Both teams will go to Southern earlier in the season.

The Salukis resume IAC play Feb. 6-7 when they travel to Illinois Normal and Central Michigan.

FILLING OUT Southern's traveling squad for the Kirksville game will be Jacque Theriot, Jack Morgan, Jack Renfro, Jerry Eingle and either Dan Smith or Warren Talley.

Tomorrow night's game opens the second half of Southern's season. Only four games remain to be played at home.

The rest of the schedule:

Jan. 27—Cape Girardeau, here
Jan. 29—at Evansville
Feb. 6—at Michigan Normal
Feb. 7—at Central Michigan
Feb. 11—Washington U., here
Feb. 13—at Eastern Illinois
Feb. 20—at Illinois Normal
Feb. 21—at Western Illinois
Feb. 23—Illinois Wesleyan
Feb. 25—Millikin, here
Feb. 27—Indiana State, here

For the Women

Class basketball tournaments began Wednesday with two games played by the freshmen.

The juniors played the freshmen 11-6 at 7 o'clock.

Representatives of organized houses that plan to enter the house tournament met Wednesday night in the women's gym.

Practices for the house tourney will begin Jan. 26, and they can be scheduled in the gym.

To participate in this tournament a team must have at least eight players, and each player must have four practices. A list of rules is posted on the bulletin board in the gym. The tournament is expected to begin around Feb. 2.

A trophy will be awarded to the winner of this tournament. Last year's trophy winner was Anthony Hall. If the same house wins the trophy three consecutive years, that house is entitled to keep the trophy.

Eastern Still Leads, SIU Cagers Second

Last week's games reshuffled the IAC basketball standings but Eastern Illinois is still on top.

The defending champions have lost three of their four non-league games but are unbeaten in five IAC contests. SIU is second with 5-2.

IAC competition will subside for the next two weeks until Feb. 6 when all teams swing back into conference play. Southern will go to Michigan Normal Feb. 6 and to Central Michigan the following night.

EASTERN KEPT its hold on first place last week by whipping Northern Illinois 82-69 before losing a non-conference tilt to Illinois Wesleyan, 77-68.

Eastern's victory coupled with Southern's rout of the Huskies showed Northern from second to fourth.

Michigan Normal moved from fifth to third. Illinois Normal dropped from fourth to sixth, Central Michigan rose from the cellar to sixth and Western Illinois sank to the bottom.

THE STANDINGS

| Team | W | L | Pct. |
|-------------------|---|---|-------|
| Eastern Illinois | 5 | 0 | 1.000 |
| SIU | 5 | 2 | .714 |
| Michigan Normal | 4 | 3 | .571 |
| Northern Illinois | 3 | 3 | .500 |
| Illinois Normal | 3 | 4 | .429 |
| Central Michigan | 2 | 2 | .500 |
| Western Illinois | 1 | 6 | .143 |

giving have finally arrived. They are maroon wool jackets with a grey WAA emblem on them.

MRS ROY W. IDE, president of the Southern Illinois Association for Crippled Children, was at the SIU campus Wednesday night, at which time she presented a speech on "Career Opportunities in the Field of Handicapped Children."

Mrs. Ide was brought to the campus by the Women's Physical Education Association Club and by Pt. Lemaire, Industrial Club president introduced the speaker.

A WOMAN'S basketball clinic for players, coaches and officials will be held at SIU tomorrow.

The clinic is being sponsored by the Southern Illinois Board of Women Officials. Miss LuLa Evans, SIU physical education instructor, is chairman of the board.

The clinic, scheduled from 9-15 a. m. until noon, will be devoted to discussions of new rules, scoring and timing, and officiating.

Miss Evans said the following high school instructors will attend the clinic: Misses Alberta Hamilton, Al Vernon, Marie Kern, Marion Opel, Stephens, Anna Jones, A. B. Pover, Webster Jean Koester, Maplewood; Mary Klehn, Nashville Mrs. R. Mcburn, Benton; and Mrs. Marie Franklin, Carbondale Community.

Friday
Millikin at Western

Saturday
Southern at Northeast Missouri, Indiana State at Northern, Franklin, Ind., at Eastern.

Monday
Eastern at Millikin.

Tuesday
Southeast Missouri at Southern, Western at Eastern.

Wednesday
Indiana Central at Illinois Normal.

Thursday
Southern at Evansville.

Speech Professor Heads Committee

John J. Pruis of the speech department, was named chairman of the elementary school programs committee of the National society for the Study of Communication at its annual convention in Cincinnati recently.

The society is concerned with improving interpersonnel communication in various fields such as military, business, home and education.

Pruis will work with his committee to improve the communication skills in the elementary schools' programs. These skills are reading, writing, speaking, and listening.

Pruis joined the SIU staff in September. He is chiefly in charge of the University school.



Jim Wilkinson, head wrestling coach (at right), and Assistant Coach Russ Bush (center) demonstrate techniques which won them both National AAU championships will Saluki Wrestling Captain Jack Stoude, Chicago senior, looks on. Southern's wrestlers open the home season this week-end with a meet against Eastern Illinois tonight at 7:30 and a return match against the Memphis Bluejackets at 2 p. m. tomorrow.

Wrestlers Host Eastern Tonight, Memphis Sailors Tomorrow

Southern's grapplers, in the midst of a three meet losing streak, will face their first IAC competition tonight when they entertain Eastern Illinois here in the men's gym.

Tomorrow afternoon the Salukis matmen will be looking for a chance to avenge an 18-14 defeat handed them by Memphis Naval Air Training Center in Memphis last Saturday. Southern's athletic department agreed to play host to the Bluejackets when the sailors noted an open date in both schedules.

WILKINSON'S LINE-UP has undergone one change since last week-end's southern encounter. Earl Coons, sidelined with a bad shoulder, will be ready for competition. Coons will replace Dan Hillman in the 177 pound entry.

Otherwise, the lineup will remain the same. Bob Whalen, Chicago letterman, will be grappling for his fourth all fifth victories. He is yet to be defeated this season. Although he has been sideling during practice sessions this week with a touch of the flu, Wilkinson expects him to be ready to go tonight.

MARSHALL RIGGAN, Belleville freshman, will again wrestle at 130 pounds, Captain Jack Stoude, with one win, in one, and one tie, will weigh in at 137. Joe Fedora, Granite City letterman, will top the 147 pounders on the roster. Bob Zdenek, another Chicagoan, successfully defended his right to wrestle at 157 pounds. Nick Verplase, Chicago letterman, will grapple in the 167 pound class. Coons will replace Hillman at 177 and Kent Werner, Belleville freshman, remains the team's top heavyweight. Starting time tonight is 7:30 p. m. Admission is free to anyone. Students need not present their tickets at gain admission. Tomorrow's meet against Memphis begins at 2 p. m.

The team will continue at home next week-end to entertain Western Illinois. (See "Winced" on editorial page of this issue).

ENGAGEMENTS
Madge atener, Tanner Twelve, to Ernest Cochran, SIU.
Billie Sanford, Washington University, to Will Burgen, Chi Delta Chi.

Kahmann Korner

By Jim Kahmann
By Jim Kahmann
That big bad flu bug seems to have hit Southern with everything but the proverbial kitchen sink. Several classes the past few weeks have approached absolute zero in attendance.

And while the athletic teams at SIU haven't been hit too hard directly by the little fiend, some past performances can probably be traced to a run-down condition somewhere along the line.

For instance, the wrestling team.

At the beginning of the season, this bunch looked like a sure winner. With Whalen, Stoude, and Fedora as a nucleus, this department went out on a limb and picked the Willkebush boys as future conquerors of everyone, excepting maybe King Kong. (And we understand he doesn't wrestle anymore.)

But somewhere along the way, the wrestling team has hit the skids, losing three in a row. Whalen was the only one to even score against Normal, and we dropped the last two by 19-8, 18-14 scores. Whalen has been the only three-time winner, and Fedora has two wins and a loss. Stoude has a win, a loss, and a tie.

The rest of the men are mostly new, and so perhaps we were expecting too much at the beginning of the season. Big Kent Werner is coming along nicely, however, so perhaps soon the heavyweight division will be intact. Also, we expect Jack Stoude to start winning them all pretty soon. Stoude is one guy who certainly has the goods to deliver, and if he doesn't, it'll be plenty disappointing.

In basketball, the Salukis have been doing well, with that setback a week ago with Normal the only really black spot on the record. Since then, we've dropped Western, Washington University, and Northern. Little Lynn, we expect, just about had a demerolize during the last quarter of the Normal game, when a 19-point lead dwindled to a one-point deficit in nine minutes.

But that's neither here nor there, it's over, and everyone's glad. It's the hope of everyone that it doesn't happen again.

Losing Kurtz for a month, may be the 225th of the season, is going to hurt Southern pretty. It's unfortunate that a wrong twist in that spill-second can cost so much. Gib will be a hard man to replace. He had an 11-point average for nine games, and was an outstanding ball-handler. It's a hustle, spill-and-drive will cost you.

As far as we're concerned, the brightest spot on the basketball scene right now is the way Jack Thies has taken over. He's one of the few men you watch play basketball, that 21 fouls per game. During all last season, Eastern players were fine. He's got reflexes faster than a disqualified on fouls only on 11 hand on asphalt. His passing and occasions as computed to the eightingest experts leave nothing to the disqualifications already recorded imagination, and he's a good shot from anywhere on the court.



NOW...Scientific Evidence on Effects of Smoking!

A MEDICAL SPECIALIST is making regular bi-monthly examinations of a group of people from various walks of life. 45 percent of this group have smoked Chesterfield for an average of over ten years.

After ten months, the medical specialist reports that he observed...

no adverse effects on the nose, throat and sinuses of the group from smoking Chesterfield.

MUCH Milder
CHESTERFIELD
IS BEST FOR ME!

Ed Sullivan
Millions see him on TV's "Town and Country" and read his famous column.

MUCH Milder
CHESTERFIELD
IS BEST FOR YOU

First and Only Premium Quality Cigarette in Both Regular and King-Size

CONTAINS TOBACCO OF BETTER QUALITY AND HIGHER PRICE THAN ANY OTHER KING-SIZE CIGARETTE