

3-5-1992

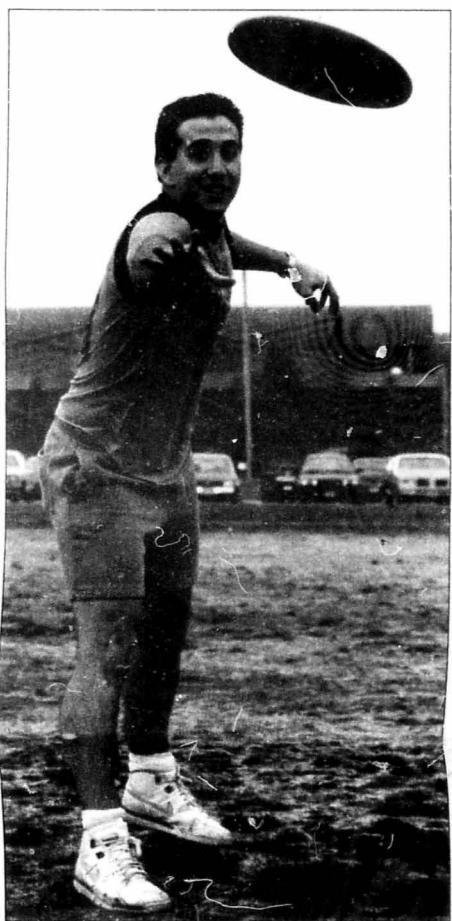
## The Daily Egyptian, March 05, 1992

Daily Egyptian Staff

Follow this and additional works at: [https://opensiuc.lib.siu.edu/de\\_March1992](https://opensiuc.lib.siu.edu/de_March1992)  
Volume 77, Issue 117

---

This Article is brought to you for free and open access by the Daily Egyptian 1992 at OpenSIUC. It has been accepted for inclusion in March 1992 by an authorized administrator of OpenSIUC. For more information, please contact [opensiuc@lib.siu.edu](mailto:opensiuc@lib.siu.edu).



Staff Photo by Mark Busch

## Flying saucer

Mark G. Smith, junior in administration of justice from Quincy, has fun throwing a frisbee on the field in front of Brush Towers. Smith was unwinding after class.

# Recession continues in state—comptroller

**SPRINGFIELD**  
State Comptroller Dawn Clark Netchs released new revenue figures Wednesday that indicate Illinois is still in the grips of the recession and could be slipping deeper into the economic abyss.

In a sobering report just two weeks before the March 17 primary election, Netchs said even \$500 million worth of emergency borrowing was not enough to shrink the state's ever-growing pile of unpaid bills.

Netchs said the state collected only \$253 million in sales tax revenues in February, down \$57 million from the same period last year. Income tax revenues were up slightly.

As a result, Netchs said her office has once again lowered by \$100 million its estimate of how much tax money the state will collect this year.

However, she and her top analysts are divided over whether

the poor results mean the recession is getting worse or whether revenue is just slow in reaching the state's coffers.

"We're not prepared to say that the dramatic drop in sales tax revenues is totally due to a deepening of the recession," Netchs said. "But if there has been a turnaround, it certainly hasn't shown up in our revenues to date."

At the same time, the backlog of unpaid bills climbed \$95 million last month to \$597 million, despite a \$500 million loan used to pay long-jeliquent bills to doctors, hospitals and other Medicaid providers.

One reason for the larger backlog is that Netchs has begun squirreling away funds to ensure the state has enough money by June 15 to repay another \$185 million loan it made last August.

The comptroller said February has historically been a poor revenue month and things should

improve slightly in April, May and June, when income tax payments begin to roll in.

Meanwhile, Netchs said there's nothing she can do to help state employees who have waited months for the state to pay its portion of their health insurance bills.

The Illinois Federation of Teachers and the Teamsters union announced Wednesday they will file 22 grievances with various state offices that employ 7,000 of their members.

Teamsters official John Sullivan said the state has traditionally been slow in paying medical insurance claims, but the present situation is so bad that some doctors have insisted state workers pay their entire bill in advance before being treated.

"The shortfall has become a longfall, and now these providers are refusing to provide benefits," Sullivan said.

# Committee proposes decreasing red decal parking by 1,500 spaces

By Casey Hampton  
General Assignment Writer

SIUC students will be taking the long walk home if proposals to alleviate the campus parking problem pass.

The Ad Hoc Committee to Revise the Traffic and Parking Regulations are working on recommendations to improve the poor parking conditions on campus, said Herbert Donow, chairman of the committee.

"We know the whole parking industry is guilty of false advertising," he said. "It is our duty to come up with a way of reducing the number of frustrating

circumstances that greet people who fail to find a place to park."

Donow said people will have to walk, and according to proposals already passed in the ad hoc committee, students will be the ones left on their feet.

The committee's proposals push student drivers from the core of the campus to the outer perimeters.

Red decal parking spaces for students would decrease sharply campuswide by more than 1,500 spaces, while blue decal spaces for faculty and staff would replace red parking.

Faculty and staff currently have the option of purchasing red or blue decals, but those who purchase

blue also can park in red.

Under the new plan, faculty and staff will be required to purchase blue and cannot park in red. The increase in the number of blue parking spaces must be installed to compensate for the increased number of blue decals.

Edwin Sawyer, the Undergraduate Student Government representative on the ad hoc committee, said this is where conflict arises.

"In order to increase revenue, all faculty and staff have to purchase blue stickers and then we have to give everyone a blue

see PARKING, page 5

# Democrats face losses

## Kerrey cancels appearances, assesses candidacy

WASHINGTON (UPI) — The big winners in this week's voting fanned out across the South Wednesday looking for votes in the largest primary day of the season, but the Democratic field was in danger of losing some of its candidates.

Sen. Bob Kerrey, D-Nebr., his candidacy failing to catch fire, canceled his campaign appearances Wednesday and returned to Washington to assess his candidacy. Democrats also were questioning how long the campaign of Sen. Tom Harkin of Iowa could survive.

But for Arkansas Gov. Bill Clinton, former Sen. Paul Tsongas of Massachusetts and a resurgent former California Gov. Edmund "Jerry" Brown Jr. it was a day for basking in their big primary victories Tuesday and

trying to turn them into more votes in the balloting to come.

President Bush started a week-long political trek through the South in an effort to blunt the protest message of commentator Patrick Buchanan, who despite losing all three Republican primaries to the president Tuesday was acting like a winner and saying Bush should withdraw.

Over the next week, the candidates' endurance will be sorely tested. On Saturday, South Carolina holds primaries while Arizona and Wyoming have caucuses. Sunday, Nevada holds caucuses and next Tuesday 11 states have primaries and caucuses, mostly in the South.

see KERREY, page 5

# IBHE wants high school students better prepared

By Brandi Tipps  
Administration Writer

Gus Bode



Members of the Illinois Board of Higher Education have called for a closer collaboration with the State Board of Education to improve preparation of high school students for college.

The Illinois Board of Higher Education released its report Tuesday, examining the trends in the number of Illinois high school graduating seniors and first-time

see IBHE, page 5

Gus says where was this plan when I was in high school?

Weekend car crash kills SIUC student, leaves one injured

—Story on page 3

Music artists profit from royalties each time song played

—Story on page 7

Opinion  
—See page 4  
Entertainment  
—See page 7  
Classified  
—See page 10



Faculty members organize jazz band, play at Shryock

—Story on page 8

Women go for first, prepare to battle Gateway rival SMSU

—Story on page 16

# Sports

Daily Egyptian

Southern Illinois University at Carbondale

## Women cagers set for biggest game

By Norma Wilke  
Sports Writer

The top seed and home court advantage for the Gateway Conference tournament is on the line tonight as the SIUC women's basketball team takes on 10th ranked Southwest Missouri.

The Salukis, 14-2 in the conference and 20-5 overall, will try to upset the 15-1 Bears for home court advantage in the Gateway Conference Tournament

### Salukis to try for piece of conference crown

and try to avenge a 90-63 loss to SMSU Jan. 4 in Springfield.

SMSU, 23-2 overall, will put a 13-game win streak on the line when they play at 7:35 tonight at the Arena, where the Bears are 0-10 in Gateway history. Although the Bears have yet to win at the Arena, they have grabbed four of their last six matchups with SIUC.

The Bears, who have won 26 straight and 42 of their last 43

games in Springfield, are virtually unbeatable at home, and SIUC does not want to play there again this season. SIUC has won 21 straight Gateway games in its own home court.

Coach Cindy Scott said the game tonight is important to both teams.

"The game is tremendously important—and more so for us," Scott said. "There is more pressure for us to win the Gateway

tournament because Southwest is virtually a shoo-in for the NCAA tournament."

With nine players who log at least 14 minutes a game, Southwest has the deepest bench in the conference. Scott said SMSU's balanced attack is its biggest asset.

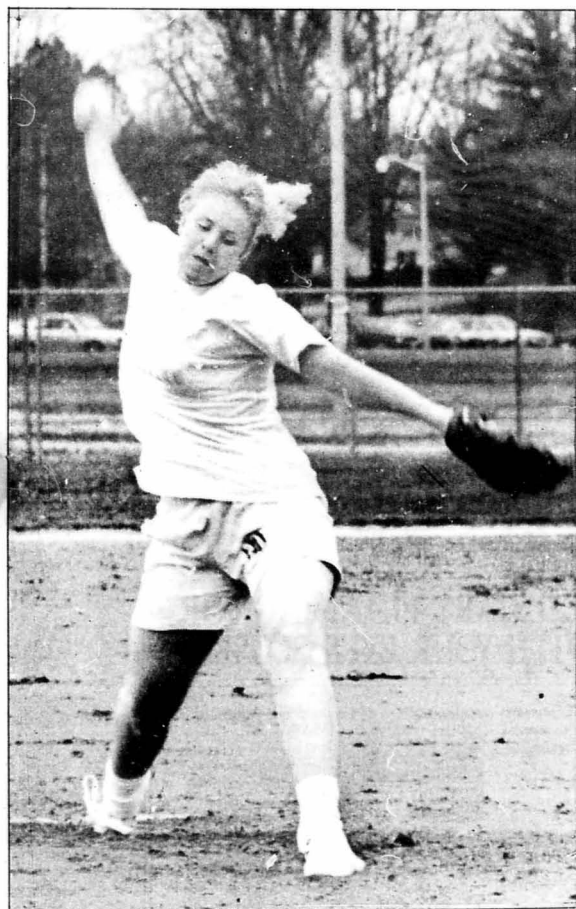
"I don't think we have anything over them," she said. "The strength of their basketball team is that they are extremely solid. At this point in

the year, we have no advantages. They're playing with tremendous confidence and are one of the best teams in the country."

SMSU, which was picked in a preseason poll to finish first in the conference, is the only Gateway team ever to crack the NCAA top 10. Southern's highest ranking was 13th in 1988.

SMSU has won its Gateway games this season by an average

see GAME, page 14



Staff Photo by Anne Wickersham

Saluki freshman pitcher Shelly Lane practices her form as the Saluki softball team readies for the spring 1992 season. The Salukis, who worked out Wednesday, won the Gateway Conference in the 1991 season.

### Saluki softball team, No. 16 in nation, prepares to repeat success of 1991

By Norma Wilke  
Sports Writer

With five starters and two top pitchers among 11 returnees from last year's squad, the SIUC softball team is ranked 16th in the NCAA preseason poll and is picked to finish first again this season in the Gateway Conference.

In a Gateway Conference preseason coaches poll, SIUC received eight of 10 first-place votes. The Salukis, who won their first Gateway title in 1991, swept through last spring with a perfect 14-0 mark, becoming the first Gateway team ever to win all of its regular-season league contests.

"The Salukis have been ranked as high

as 18th in the NCAA poll. The 1992 season marks the highest ranking the team has had and the first time SIUC has been ranked in the preseason poll. Coach Kay Brechtelsbauer said SIUC has retained a good group.

"We were highly successful last season, and we're pleased about the ranking," she said. "It's always an honor for the coaches in the conferences to vote you as the team to beat, and hopefully we can live up to those expectations. The team is eager to start, so we can find out where we stand."

SIUC finished the fall exhibition season 11-2. The Salukis will start the spring by playing host to the Southern Classic this

see SOFTBALL, page 15

## Oh-maya!

### Saluki junior wins MVC Player of Year award

By Scott Wuerz  
Sports Writer

For Saluki forward Ashraf Amaya, the 1991-92 basketball season has been a year of fulfilled potential.

The junior forward led the Dawgs to the Missouri Valley Conference title. He led the MVC in scoring and rebounding and earned Valley Player of the Week honors four times—the latest coming this week.

Amaya was named the preseason MVC Player of the Year by Valley coaches and, to no one's surprise, was named Wednesday as postseason Player of the Year.

SIUC assistant coach Rodney Watson said Amaya inspired the Salukis throughout the season with his consistent play.

"It's great to see players rewarded for their work and dedication," he said. "(Amaya) maintained a tremendous effort all season long."

"It's a real credit to his character to be picked preseason player of the year, and then



Ashraf Amaya

having the poise to fulfill those expectations," Watson said.

Amaya averaged 19.3 points and 10.5 rebounds during the season.

He said the awards are a source of personal satisfaction, but pale in comparison to winning the conference championship.

"It's a great honor to receive individual awards," he said, "but I rely on the team for my success. Winning the Valley is the goal we have focused on all season long, so it's hard to compare (the two)."

Amaya also was named to the All-MVC first team in a unanimous decision.

Sophomore point guard Chris Lowery was named to the all-conference second team, freshman forward Marcus Timmons was named to the MVC all-newcomer team, and junior guard Tyrone Bull was named to the all-defensive team.

Amaya also was named MVC Player of the Week Wednesday after scoring 13 points and recording 12 rebounds against Southwest Missouri Saturday and turning in a 25-point, 9-rebound performance against Northern Iowa Monday.

The top-seeded Salukis next see action in the Missouri Valley Conference tournament, facing No. 8 Wichita State in first round action at noon Saturday in the St. Louis Arena.

### Men netters play Tulsa for opener of MVC season

By Thomas Gibson  
Sports Writer

The SIUC men's tennis team will try to gain some momentum after its 1-4 start as it travels to Oklahoma for the second straight weekend.

Freshman Uwe Classen said the team's sub-.300 record is misleading because the Salukis have played two Big Eight Conference teams and independent powerhouse Notre Dame.

"We've been playing tough schools out of our conference," he said.

Tulsa University is the first Missouri Valley Conference foe the Salukis will face this season.

Both teams are trying to rebound from losses in their last outing and will battle Sunday in Tulsa.

Last week the netters were blown away by Oklahoma 9-0 and Oklahoma State 5-1.

Tulsa sports a 4-2 record going into action against SIUC but is coming off a loss at Texas Tech.

Three contributors are gone from the Salukis' 1991 Missouri Valley Conference runner-up team, and coach Dick LeFevre said it is going through a rebuilding stage after losing those players.

"We lost our No. 1, 2 and 5 men in the lineup from last season—that's half the team," LeFevre said.

The team is now comprised of juniors Tim Derouin and Jay Merchant, sophomore Kai Kramer and freshmen Uwe Classen, Altaf

see NETTERS, page 15

### Owners' group puts off action on Seattle sale

ROSEMONT (UPI) — Baseball's ownership committee Wednesday said it would need more information before it can decide on whether to approve the sale of the Seattle Mariners to a Japanese-led group.

The committee met for two hours and it was not immediately clear what additional information it wanted. The meetings continue Thursday but the Mariners' issue is not addressed.

The baseball owners are scheduled to meet again June 10-11, although a special meeting could be called at any time. A meeting is planned between baseball officials and representatives of the Seattle group.

The Seattle group is led by by Hiroshi Yamauchi, the president of the Japanese company that makes Nintendo video games. He would control 60 percent of the team. The other members of the Baseball Club of Seattle include executives from Nintendo of America, McCaw Cellular, Microsoft Incorporated, the Boeing Co. and Puget Sound Power and Light Co. All are Seattle-area firms.

Yamauchi's son-in-law, Nintendo of America president Minoru Arakawa, is a longtime resident of the Seattle area and would manage the majority interest.

The Seattle group has put together \$125 million for the Mariners and operating costs.



## Fresh Food

Quality fruits & vegetables  
at the lowest prices

Banana .....	3 lbs./\$1.00
Broccoli .....	.69¢/bunch
Green onion .....	.5/\$1.00
Celery .....	.39¢/stalk
California Navel Orange .....	.08¢ ea.
Florida Red Grapefruits .....	.19¢ ea.

And much more...

Scale Effective Mar. 7, 1992  
Hours: Mon. - Fri. 9:30 - 6:00 Sat. 9:00 - 5:00  
100 E. Walnut (Intersection of E. 13 & Railroad) 529-2534



### All You Can Eat Snow Crab Legs

Reservations Recommended

**Every Thursday**

**\$11.95**

**5-9pm**  
457-7711



## Europe This Winter!

London	\$375*
Brussels	\$510*
Paris	\$515*
Rome	\$565*
Athens	\$615*

\*Fares are roundtrip from Chicago based on a roundtrip purchase. Taxes not included and restrictions apply. Call for other world-wide destinations, both one way and roundtrip.

### Council Travel

1753 N. Dearborn St., 2nd floor  
Chicago, IL 60610

**312-951-0585**

Call For A Free 1992 Student  
Travel Catalog!

## Come Watch Dr. Edward Max


### Ph.D. in Biochemistry

## Trounce Creation Theory

In an Evolution vs. Creation Debate

Shryock Auditorium

**7:00 pm March 11**



Sponsored by the Forensics Union  
and the SIU Debate Team



## THE AMERICAN TAP

Tonight

Blue Hawaiians

**\$1.75**

Miller Lite & Miller

Genuine Draft bottles

**\$1.25**

**NEVER A COVER!**

foosball & darts

DJ Show & Give aways

# FINAL DAYS!

Sportswear			
\$5	\$10	\$15	\$20

Street Dresses			
\$20	\$30	\$40	\$50

Special Occasion Dresses		
\$20	\$40	\$60

ALL SALES FINAL

## ruthie's

702 S. Illinois

M.-Sat.  
9:30-6:00





# Newsrap

## world

**AZERBAIJAN SHOWS PROOF OF MASSACRE** — Azerbaijan displayed evidence Wednesday to support its claims that Armenian soldiers staged a massacre of unarmed civilians in the war-torn enclave of Nagorno-Karabakh. As graphic testimony to claims that Armenians slaughtered villagers, the Azerbaijani government mission in Moscow showed a packed news conference a film of the mutilated bodies of women, children and elderly men allegedly shot while fleeing.

**TURKISH COAL MINE BLAST KILLS 81** — At least 81 miners were killed and nearly 300 were missing in an explosion that ripped through a coal mine near the Black Sea coast, the state media reported Wednesday. The explosion late Tuesday in Zonguldak, about 125 miles northwest of Ankara, was caused by methane gas that was abruptly released from a coal vein into a mine shaft about 1,300 feet below the surface, said State Minister Omer Barutcu.

**DIPLOMAT: IRAQ READY TO DISARM WEAPONS** — A senior Iraqi diplomat said Wednesday that his country was ready to cooperate with the United Nations in implementing resolutions calling for the destruction of Iraqi weapons. "Iraq is ready to cooperate with the Security Council to implement the Council's resolution regarding weapons of mass destruction," Nabil Najm, Iraq's Ambassador to Cairo-based Arab League said.

**SERBS, MUSLIMS CLASH IN BOSNIA** — Serbs and Muslims clashed Wednesday in Bosnia-Herzegovina amid fears of spreading civil strife following an independence referendum in the multi-ethnic central Yugoslav republic. At least two people were killed and eight were injured in the clashes. Meanwhile, U.N. special envoy Cyrus Vance who authored a peace plan to deploy 14,000 troops in war-ravaged Croatia, met in Belgrade with feuding ethnic leaders for talks.

## nation

**DEMOCRATIC LEADER SAYS BUSH IN PANIC** — Senate Democratic leader George Mitchell said President Bush is in a "state of panic" about his re-election campaign, which led him to claim he made a mistake in agreeing with Congress on a tax increase in 1990. "I have heard of flip-flops," the Maine Democrat told reporters. "But this is a flip of a flip of a flip." It's obvious that Patrick Buchanan has hit a nerve and the president doesn't know how to react to it, he said.

**JURY FINDS FERTILITY DOCTOR GUILTY** — Fertility specialist Dr. Cecil Jacobson was found guilty Wednesday on 52 counts of perjury and fraud for misleading dozens of childless couples and using his own sperm to impregnate some women patients. A federal jury deliberated four days before finding Jacobson guilty on all counts. The 55-year-old doctor kept his arms crossed and looked straight ahead while the verdicts were read out. Jacobson faces 280 years in prison and \$300,000 fine.

## state

**OFFICIALS TO EXHUME BABY CORPSE** — Sangamon County officials will exhume the body of an 18-month-old baby who died after being bitten, shaken and struck in December so pathologists can conduct further tests to determine if the child's mother killed her. First Assistant State's Attorney Patrick Kelley said forensic tests on the body of Penny Marie Brown are incomplete and officials need "further testing to see if a bite mark on the child matches her mother's teeth."

**JUDGE CONVICTS 8-YEAR-OLD OF RAPE** — A judge found an 8-year-old boy guilty of raping a 10-year-old playmate last May during a gang assault by three youths. Associate Judge W.A. Sappington Tuesday sentenced the boy to one year probation and ordered him to undergo counseling. Although the boy was released to the custody of his parents, he will remain a ward of the court and his official legal guardian is the state's Department of Children and Family Services.

— United Press International

## Accuracy Desk

If readers spot an error in a news article, they can contact the Daily Egyptian Accuracy Desk at 536-3311, extension 233 or 228.

### Daily Egyptian

Southern Illinois University at Carbondale

Student Editor: Jackie Spinner	Entertainment Editor: Kristi Rominger
Associate Student Editor: Natalie Boehme	Sports Editor: Tony Mancuso
News Editor: Leslie Cole	Photo Editor: Anne Wickham
Editorial Page Editor: Jefferson Robbins	Investigation Coordinator: Brian Gross
Special Pages Editor: Jerianne Kimmel	Student Ad Manager: Bob Barich

Acting Managing Editor: Wanda Brandon  
Business Manager: Cathy Hagler  
Display Ad Manager: Sherrill Allen  
Classified Ad Manager: Vicki Kreher  
Production Manager: Gary Buckles  
Account Tech III: Kay Lawrence  
Microcomputer Specialist: Kelly Thomas

## ICPA

Member of the Illinois College Press Association  
and client of United Press International

Daily Egyptian (USPS 169220) published daily in the Journalism and Egyptian Laboratory Monday through Friday during the regular semester and Tuesday through Friday during the summer term by Southern Illinois University, Communications Building, Carbondale, IL.

Editorial and business offices located in Communications Building, North Wing, Phone (618) 536-3311, Walter B. Jaehring, fiscal officer.

Subscription rates are \$55 per year or \$35 for six months within the United States and \$140 per year or \$90 for six months in all foreign countries.

Postmaster: Send all changes of address to Daily Egyptian, Southern Illinois University, Carbondale, IL, 62901. Second Class Postage paid at Carbondale, IL.



# Student dies in car accident; girlfriend undergoes surgery

By Sherri Wilcox and Annette Holder  
General Assignment Writers

A ticket for last night's Metallica concert went unused. Clinton Duke, a big fan of the group, wanted to attend. An avid concert-goer, he planned to go with his long-time friend, Mike Oberlee. But something got in his way.

On February 29, while Duke, 19, of Cisney, and his girlfriend Jenni Smith were on their way back to Carbondale from Cisney, a car allegedly veered into oncoming traffic, hitting their car. Duke died in the accident.

"It's just such a shock," Oberlee said, his best friend since third grade. Duke and Oberlee graduated from Cisney High School in 1990. "He loved his friends, and he had hundreds and hundreds of them," said Oberlee, an accounting major from Cisney. "He remembered everyone he met."

Duke was a fun-loving and loyal friend, who loved listening to music and having a good time, Oberlee said.

"Last Halloween, we went to a costume party dressed as nuns," Oberlee said. "He really hammed it up all night, blessing people as they walked through the door. He was just a great big kid."

Duke worked as a cook at Dubbles Drive-Thru in Carbondale, where coworkers said he always kept them laughing.

"He was crazy, but in a good way," said Michael McEnelly, manager at Dubbles. "He made people smile because he always had a smile on his face. Not all of us can be that lucky."

## Obituary

McEnelly said Duke did an impersonation from a cable TV program about a man with a cabbage for a head.

"He'd run around with the lettuce saying things like 'You don't like me because I have a cabbage for a head!'" he said. "He was a real comic."

"He lived every day like it was his last," he said. "I wish I could be that way."

Services for Duke were held Monday at Frank and Bright Funeral Home in Flora.

Duke's mother, Glenda, said she was glad many of her son's friends from Carbondale came to the wake. More than 1,500 people attended.

"Carbondale students stood in line for three hours at a time," she said.

Oberlee said the wake was scheduled to run from 6 p.m. to 8 p.m., but due to the number of people it lasted past 11:30 p.m.

Duke came to SIUC summer 1990 and later transferred to John A. Logan. He was planning to return to SIUC in the summer, leaning toward a degree in accounting.

Duke chose SIUC because his parents graduated from the University in 1971.

Jenni Smith, an 18-year-old SIUC business major from Geff, remains in Deconness Hospital in Evansville, Ind. where she underwent orthopedic surgery late Wednesday afternoon. Glenda Duke said Smith would welcome cards sent to her.



Staff Photo by Charyn Vittorio

## Author autographs

Kesho Yvonne Scott signs a copy of her book for Karen Brown, a pre-major sophomore from Houston, Texas. Scott, author of "The Habit of Surviving: A Black

Women's Strategies for Life," was signing books Wednesday at Morris Library Auditorium before she gave a reading of excerpts from her book.

## Michelangelo virus set to destruct

United Press International

The Michelangelo virus, the latest strain of computer infections, is set to detonate Friday, and could destroy millions of dollars in data on personal computers all around the world.

While the virus had already appeared in some areas by Wednesday, the extent the damage it would do was hard to estimate because the range of the infection will not be known until after March 6, the 517th birthday of the Italian Renaissance painter.

The virus is expected to be active only during the 24-hour, midnight-to-midnight window of danger Friday.

The Michelangelo virus, like previous computer viruses, is actually a small computer program, which is passed along inadvertently over computer bulletin boards or infected computer disks.

The virus hides in the hard disk of IBM-compatible computers and waits until the built-in computer clock turns to a certain date. Then it goes off, erasing data at random.

## T-BIRDS

Thursday

80¢ José Cuervo Shots

80¢ Long Island Iced Teas

45¢ Keystone Cans



Always the  
lowest prices  
in town!

111 N. Washington

**NO COVER** 529-3808

## SPEND A NIGHT IN THE GUTTER!



**UNLIMITED BOWLING & DRINKS\***

Every Thursday

**\$7.00 Per Person**

\*Restrictions may apply  
Know when to say, when

**SPORTS CENTER BOWL**

Behind the Sports Mall • Carbondale 529-4155

## RESERVE OFFICERS' TRAINING CORPS



## START YOUR CLIMB TO CAREER SUCCESS THIS SUMMER.

Apply now for six weeks of Army ROTC leadership training. With pay, without obligation.

You'll develop the discipline, confidence and decisiveness it takes to succeed in any career. And you'll qualify to earn Army officer credentials while you're completing your college studies.



**ARMY ROTC  
TWO-YEAR PROGRAM**

THE SMARTEST COURSE  
COURSE YOU CAN TAKE

Contact: CPT. John Vavala  
453-5700

# Opinion & Commentary

Daily Egyptian

Southern Illinois University at Carbondale

## Daily Egyptian

Celebrating 75 years of publication

Student Editor-in-Chief  
Jackie SpinnerEditorial Editor  
Jefferson RobbinsActing Managing Editor  
Wanda BrandonNews Staff Representative  
Todd WelvaertAssociate Editorial Editor  
John C. PattersonFaculty Representative  
Walter B. Jaehnig

## United Way scandal bruises local efforts

**CHARITY DOES NOT MAKE THE WORLD GO 'round**, but it does help nudge it into a somewhat sweeter orbit. A helping hand is a beneficial thing when it spreads wealth to those who need it most desperately. But when the helping hand shovels benefits in the wrong direction, some serious reworking is needed.

The resignation last week of William Aramony, head of the United Way of America for 22 years, sent a ripple of concern through the national charity network and the donors who give regularly to the effort. Aramony had been receiving a stunning \$463,000-a-year salary, plus fringe benefits including a pricey New York City condominium, all paid for through United Way donations.

**ARAMONY, WITH A SALARY NEARLY DOUBLE** that of President George Bush, exemplified administrative overspending. Such corruption in bureaucracies can sometimes overshadow any good done by an agency. Local United Way affiliates nationwide collect money for redistribution to worthy social causes, keeping the bulk of donations circulating in their areas.

These local operations will be the ones to suffer when contributors withdraw their funds, hoping to inflict change on the national structure. The United Way of America operates on a \$29 million annual budget. A drop in local donations will not force any redistribution of power, and only hurts charity services in the region.

**IN CARBONDALE, THE UNITED WAY** contributes \$1,200 in national dues, about 1 percent of the \$120,000 raised locally. In return, the local affiliate receives nearly \$8,300 from the national organization.

The United Way does work. There are no Aramonys in every United Way director's chair. Locally, director Deborah Moore oversees Carbondale United Way operations on a part-time basis, receiving only an \$18,000 salary voted to her by a board of local United Way volunteers. Moore's outfit is hardly an example of inflated overhead.

The success of local efforts will go ignored as the public focuses on the national scandal. When an organization designed for charity purposes becomes top-heavy with a greedy bureaucracy, it needs to rethink its national goals. If local affiliates can manage successful social programs without significant overhead, then the national players should follow suit.

## Opinion from Elsewhere

### Porno bill cannot prevent rape

The Daily Illini  
Champaign-Urbana

Imagine being on trial for a violent crime and telling the court—as your main defense—that you did it because you read about it in a magazine.

That's what proponents of the Pornography Victims' Compensation Act would accept as a defense for sex crimes. The act would allow victims of sex crimes to sue the producers and distributors of pornographic materials if they can prove that their attack was caused by previous exposure to such material.

There is no contesting that pornography encourages the misperception of women and their roles in society. But it is nearly impossible to prove that pornography is a direct cause of sex crimes.

These proponents would be much more effective if they would direct their energies elsewhere, such as finding ways to protect the potential victims of sex crimes, making it easier for people to file harassment suits and protecting children from the child pornography industry. More empty political posturing is going to do nothing to prevent sex crimes.



## Letters to the Editor

### Student gets night-walk scare; grateful for officer's courtesy

You can hear it over and over: "Women should not walk alone at night." However, there will usually come a time when there is no alternative.

This was the case for me due to procrastination. I was working in the computer lab at Faner until 3 a.m. one night. While walking home down East Grand Avenue, prepared with naice to conquer the inevitable, I became very apprehensive as I was being watched by a driver in a blue car. While approaching Quick Trip, the car suddenly turned into the vacant gas station and stopped. Clutching on to the mace in my pocket I continued to walk on, paying close attention to the suspicious car behind me. A police car drove by and I thought for sure he would

sense the obvious, but he kept on going.

Watching that car's every move I realized that it was coming my way. Scared out of my mind, I walked faster and faster, for that was the only car in sight. Just as I reached Pinch Penny, the car turned in the driveway and stopped. For a moment there I thought I was about to face a woman's worst nightmare.

Luckily it was a Carbondale policeman in an unmarked vehicle, concerned about my safety, and he asked me if I had much further to walk. Sincere gratitude and appreciation goes out to that police officer for watching me, and to everyone who believes in making this world a safer place to walk in.—Maryann Beckman, senior, marketing.

### Nuclear bill subsidizes tragedy

The Johnston-Wallop National Strategy Bill, which just passed the Senate on Feb. 20, is a national tragedy. It will subsidize the nuclear power industry by paying for more nuclear power research and also paying the costs of uranium enrichment for nuclear power plants. There are also provisions for eliminating public comment hearings prior to the opening of nuclear power plants.

This is the bill referred to in the Feb. 21 DE as stressing conservation, efficiency, and alternative fuels. Nuclear power is not an alternative which promotes long-term well being.

Thirty years ago the National Academy of Sciences issued a report stating that no commercial nuclear power plants should be built until the waste disposal problems had been solved. Today

there is a great controversy over long-term storage of high-level nuclear waste, and no solution has been found.

The government is now considering Yucca Mountain exclusively as a storage site for waste from nuclear power plants, despite a law in Nevada making the storage of high level nuclear waste illegal. There are also many technical problems with the Yucca Mountain site, which may still be an active volcano.

I wonder how many more nuclear power plants would be built if a law was passed requiring the waste to be stored in the White House.

P.S.—April 25 is Chernobyl Commemoration Day.—Jackie C. Badger, senior, biology/economics, coordinator, Student Environmental Center.

### Knowledge must serve society

Mr. Helmer, your Bible toting, conservative prejudice makes me sick. This is the state of Illinois; The land of Lincoln. Our governor's name is Edgar, not Helms.

As a professor in mechanical engineering and with your knowledge of science, I think you should serve the University and com-

munity by teaching your students to think more openly about solving problems in science and solutions to our energy crisis, instead of condemning someone's sexual preference, their morals, or how an individual wishes to live in a free society.—Darryl Cassidy, Mathematics

### BOT search a misleading drain of cash

I'm wondering how I could have been hearing, for several weeks now, who the next SIU Chancellor is going to be, when only a few days ago I saw the first public advertisement for the position. Could it be that SIU is once again engaged in an expensive nationwide search for a candidate who is already known?

Things do seem to be pointing in that direction. The Board has been trying to pare down the search committee to limit constituency input. In addition, the Board would like to keep the candidates' names secret until the position is filled. One reason for this might be so the Board can, in effect, appoint the person they choose as chancellor.

I understand most Board members are busy with their careers outside the University and can't have a clue as to how those of us "at the bottom of the heap" here at SIU are feeling. This is a time when students are continually asked to pay more for tuition only to get less for their dollar. Faculty and staff are stiffed with little or no pay raises year after year, and are asked to take on heavier work loads. Benefits are eroding at a frightening pace. There is little or no money for travel, we must restrict our long-distance telephone calls and copying, and can expect little support for research. Why are we spending large sums of money on a search for a positions many of us feel is an unnecessary drain on the budget of this University, for a candidate some feel has already been decided upon?

Don't be surprised if you come back from summer vacation to find our new chancellor has arrived from Stevens Point, Wisconsin, after a short leave from the SIU system where he did a not-so-good job as dean.—Georgia Wessel, academic advisor, Department of Photography



# Calendar

## Community

**SUMMER CAMP JOB** information will be available from 9 to 2 today in the Hall of Fame, first floor, south end of the Student Center. Talk to area camp directors about opportunities. Call 453-1121 or 942-3164 for more information.

**STUDENTS FOR HARKIN** will meet for all those interested in volunteering for the Tom Harkin for President campaign at 3 tonight in the Roman Room of the Student Center.

**PUBLIC ISSUES FORUM** on Legal, Economic and Political Changes in Eastern Europe at 7:30 tonight in the School of Law Room 108.

**LATTER DAY SAINT** Student Association will have a Book of Mormon class at 1 today in the Mackinnon Room of the Student Center.

**PSI CHI** deadline for application and fee is March 10. Bring application and fee to the Psi Chi mailbox or give to Helen. Call Helen at 453-5544 for more information.

## Entertainment

**CLUELESS** deadline for sign up is today. Clueless will take place on March 8. Admission is \$2.50.

**CALENDAR POLICY** -- The deadline for Calendar items is noon two days before publication. The item should be typewritten and must include time, date, place and sponsor of the event and the name of the person submitting the item. Items should be delivered or mailed to the Daily Egyptian Newsroom, Communications Building, Room 1247. An item will be published once.

## KERREY, from Page 1

Kerrey, who finished no higher than fourth in any of Tuesday's seven contests, was deciding whether to go through the hectic week. He acknowledged Tuesday night he had no chance of winning any of next week's primaries.

Kerrey's spokesman, Steve Jarling, said the senator "wanted to get back to Washington to meet with colleagues, staff and supporters and assess where his campaign is at."

Asked if the Kerrey campaign was experiencing money problems, Jarling said, "There's always money problems. Fund-raising has been pretty good but money goes out quickly. It's one of the considerations the campaign needs to look at."

Kerrey said he would announce Thursday what his plans will be.

Harkin fared slightly better, winning the Idaho caucuses and apparently leading in the Minnesota caucuses.

Still, he was talking with aides about his money-short campaign, and labor leaders, his strongest supporters, met in Washington to decide what course they might take.

On Tuesday, Clinton took a decisive victory in Georgia while

Tsongas won the Maryland and Utah primaries and the Washington caucus. Brown made a comeback by winning the Colorado primary and finishing a strong second in Utah.

Clinton looked forward to a heavily Southern flavor in next week's voting, banking on his regional roots to give him the majority of the delegates at stake.

"I feel good and there's a lot more work to do today," he said.

Tsongas was aware of Clinton's strength but also his campaign knew he had to continue to show strength outside of New England.

"Bill Clinton has the advantage in the South," Tsongas said. "I just need to show the flag, get the message out, and if we can do as well as we did yesterday that will be fine."

As an indication of how combative the Super Tuesday race could become, a poll by The Miami Herald and WTVJ-TV in Florida showed Clinton leading Tsongas 27 to 21 percent among likely voters next week.

Brown spent the day campaigning in Nevada, criticizing Clinton's and Tsongas' labor record to striking workers in Las Vegas.

## PARKING, from Page 1

space," he said. "The logic behind this is that students are young and active and can walk, but faculty and staff cannot. They would be giving them almost 100-percent ratio for spaces."

The actual distribution of deals in 1990-91 was 12,700 issued to students and 4,136 to faculty and staff. If the proposed changes take effect, the ratio of faculty and staff to parking space will be around 1.19 to 1, while the ratio of student to parking space will be around 3.6 to 1.

Also under the new proposals, any student living within one-mile from campus will be required to walk to campus or park only in Lot 56 past the arena to help phase out the driving students who live close to campus.

Sawyer said the committee's proposals are pushing out students.

"These proposals are saying the only way to alleviate the parking problem is to push students as far from campus as possible," he said. "The distributions are not sound. They did not take into consideration who needs greater access to the campus, and (USG) thinks it's equal."

Sawyer said the proposals are pressing the issue into students

versus faculty.

"(Students and faculty) are here for the same purpose: to keep this University running," he said. "The students have been pushed to the furthest perimeters of the campus and we want equal access."

To compensate for the decrease in red parking spaces within the campus, officials would expand Lot 59 past the law school adding 600 red spaces. This would cost \$360,000 plus lighting.

A bicycle parking area would be placed in Lot 59 where bikes can be left as transportation to the housing areas.

Lighting along Douglas Drive into Lot 59 would be upgraded at a cost of \$1,500 a unit.

Sawyer said students would have unsafe parking areas that are an unjustified distance from their respective housing units.

The ad hoc committee also is discussing the possibility of increasing the parking meter rate in Lot 13 and 13A in front of the Student Center from 25 cents to 75 cents.

This would help increase turnover and deter students from parking in the lots for class.

A majority of the subcommittee is faculty and staff, and they are

discriminating against students with these proposals, Sawyer said.

Donow said the ad hoc committee's proposals are in premature stages at the moment, but will be finished soon.

"The committee has not yet finished its work, so its sort of premature to talk about right now," Donow said. "We're trying to do the best we can do with a scarce commodity—that does not mean we can get blood out of a turnip."

The final report of recommendations by the ad hoc committee will be sent to the Traffic and Parking Committee, and changes would be implemented next fall if passed.

Sawyer said if passed in the ad hoc committee, the proposals nearly are guaranteed to pass in the Traffic and Parking Committee because nine of the 12-member ad hoc committee also are on the 11-member parking committee.

"It alarms us the fact that these members are on the parking committee," he said. "Anything that happens here is going to happen there."

USG will vote on three resolutions opposing the ad hoc committee's proposals next Wednesday.

## IBHE, from Page 1

freshman enrollment in Illinois higher education.

A study conducted at SIUE revealed one in five Illinois public university freshmen flunked math between 1988 and 1990 and the same number flunked science courses.

The report was the second of three reports.

In 1986, the Board of Higher Education adopted a series of policies recommended by its Committee on the Study of Undergraduate Education.

The policies established the improvement of undergraduate education as a state priority and requested improvements in three areas: student preparation and remediation; student achievement, scholarship and general education; and faculty excellence in teaching, said Kathleen Kelly, deputy director for academic affairs for IBHE.

The first report, Undergraduate Education: Learning and Teaching, released in January, focused on the implementation of the board's policies on student achievement, scholarship, and general education

and on faculty and excellence in teaching.

The report also examined how Illinois colleges have moved toward improving undergraduate education.

Kelly said this report is designed "to keep the importance of undergraduate education on the public agenda so people know it is important and are working together to help solve the problem."

She said the two most important policies adopted by IBHE are colleges and universities improving the preparation of students by informing perspective students, parents and schools of expectations for adequate academic preparation, and increased efforts on the state level.

Already, the IBHE and the State Board of Education are working in conjunction with colleges, universities and high schools in Illinois to obtain a grant from the National Science Foundation to improve science and mathematics skills among students, Kelly said.

John Verdun, an SIUC professor in educational administration in higher education, said the

recommendations are good and he agrees, but only when applying them to major universities, not colleges or community colleges.

Another important recommendation is the school/college partnerships.

A school/college partnership means that a cooperative effort to prepare graduating seniors and improve undergraduate education, exists between them, she said.

Kelly said higher education is putting too much money into remedial programs now.

"The purpose of this report is to find ways to reduce as much as possible the money being put into those programs and put the money into regular undergraduate education," she said.

Most of the policies adopted by IBHE are not binding, but colleges and universities in Illinois see this as a priority too, Kelly said.

She said she did not foresee any problems with universities not complying with the recommendations.

UPI contributed to this report.

Murdale Unocal 76			
<b>OIL-FILTER LUBE</b> \$10.95 w/ 5 quarts of grease	<b>BRAKES</b> \$39.95 Per Axle	<b>RADIATOR FLUSH</b> \$19.95 ACROSS	<b>REBUILT TRANSMISSION</b> NEW CLUTCH 20% OFF LABOR
<b>TUNE UPS</b> 4 qt. \$29.95 Most Cars	<b>NEW SHOES OIL PAID</b> FACE REARWASH WHERE AVAILABLE NEW GREASE REAL IS NEEDED SEMI EXTRA		<b>TUNE UPS</b> 4 qt. \$29.95 Most Cars
COUPONS MUST BE PRESENTED WITH INCOMING ORDERS <b>Great Prices and Friendly Service</b> 1501 W. Main 457-6964 exp. date			

**INTERNATIONAL STUDENTS**  
SHIPPING OVERSEAS  
SHOPPING FOR OVERSEAS  
Call or Write

ABACO INTERNATIONAL SHIPPERS  
4201 W. WRIGHTWOOD AVE  
CHICAGO, IL 60639  
AIR EXPRESS · OCEAN ECONOMY · SMALL PARCELS  
TEL: 1-800-621-4504 TOLL FREE

**QUATROS ORIGINAL**  
DEL F P PAN PIZZA A

**DELIVERY DEALS**

**SMALL WONDER FREE DELIVERY**  
Small pizza with 1 topping and 1-16oz. bottle of Pepsi. **\$5.49**

**REAL MEAL DEAL FREE DELIVERY**  
Medium pizza with 1 topping and 2-16oz. bottles of Pepsi. **\$7.79**

**THE BIG ONE FREE DELIVERY**  
Large pizza with 1 topping and 4-16oz. bottles of Pepsi. **\$9.89**

**549-5326 FAST, FREE DELIVERY**

**710 BOOKSTORE**

HAS IN STOCK A LARGE SELECTION OF BOOKS ON NUTRITION & HEALTH RELATED TOPICS

MARCH is National Nutrition Month

**EAT RIGHT AMERICA**

EAT HEALTHY

710 Bookstore  
710 S. ILLINOIS  
549-7304

# Speaker says people learn racism; blames fear, economic conditions

By Sherri L. Wilcox  
General Assignment Writer

People learn racism, and people can unlearn it, said Kesho Scott, a professor and coordinator of anti-racism workshops.

"All of us are racist,—you, me—these are the traditions established in this country," said Scott. "We have to be honest about it."

Scott, a writer and lecturer about race relations, was the first African-American female tenured professor at Grinnell College, where she teaches sociology and American studies.

She recently published her book "The Habit of Surviving," which focuses on the lives of four African-American women.

People are conditioned to be racist by their surroundings, especially their parents' attitudes, Scott said.

"We don't want to challenge our parents, especially when we are young," she said. "I came from a very anti-semitic family, and I heard how the Jews were bad and this and that. By the time I actually met someone who was Jewish, I had all these fears built up."

"That's why racism exists, because we are frightened of what is different," she said. "It is hard to talk about this. It is the number one thing that shuts people down."

The first step in stopping racism is understanding what it is, she said. Her working definition of racism is the "systematic mistreatment of one group by another."

Scott tries to combat this mistreatment through workshops she conducts across the country. She had one on Tuesday evening in the Student Center.

"Primarily, I look at white racism," she said. "But all groups have racism within them. We do a number on each other on who is black enough and who is white enough."

Scott said her workshops are straightforward, frank and

unguarded.

"It is not an intellectual experience, it is hands-on," she said. "I hope people get honest enough to say what they learned—and what they didn't."

One concept Scott wants to clear up is that of reverse-racism.

"There is no reverse-racism in this country," she said. "People of color just don't have enough power to force their culture onto others."

"I wish I did, for just one day." When minority groups move away from the mainstream to start ventures and organizations for people of their race or ethnic backgrounds, they are not segregating themselves, but rather creating a safer environment in which to grow, Scott said.

"It is like blaming the people who were kept out all these years for not being integrated," she said. "Sometimes you have to separate if you want to move on. It is a proactive response to overt segregation."

Scott said the economy is one major cause of the ups and downs in the racism cycle.

"When conditions are bad, everybody is in trouble," she said. "White-ethnics are losing their white-skin privilege to jobs and status. It is the economy. To not recognize that and beat up blacks for it is being ignorant to the facts."

**Egyptian Drive-In**  
888-8116  
Rt. 148 West to Vinson, Co. Airport  
ADULTS \$2.50

**FRIDAY-SATURDAY-SUNDAY**  
Gate Open 6:30/Show 7:30

**KUFFS** (PG-13)  
Robert DeNiro, Jessica Lange

**CAPE FEAR** (R)

**CASH**  
Over \$1000 in Cash & Prizes  
Win \$25 Cash Every Fri., Sat. & Sun.  
Win \$100 Cash Last Sun. of Month

Restaurant Open Every  
Thursday Night 5 p.m.-9 p.m.

"Best Catfish Fillets  
West of Kentucky  
Lake"

Fresh 13 Oz. Ribeye,  
8 Oz. Fillet Steaks,  
Alligator & Crawfish

**MOVIES!**  
\$3.00 ALL SHOWS BEFORE 6 PM

**Fox Eastgate • 457-5685**

Final Analysis (R)  
4:45 7:15 9:30  
The Great Mouse Detective (G)  
5:00 6:45 8:15  
The Hand That Rocks the Cradle (R)  
4:45 7:00 9:15

**Varsity • 457-6100**

Wayne's World (PG-13)  
5:15 7:15 9:15  
Radio Flyers (PG-13)  
4:45 7:00 9:15  
Super My Man Will Shoot (PG-13)  
5:30 7:30 9:30

**ALL SEATS \$1.00**

**SALUKI • 549-5622**

The Last Boy Scout (R)  
7:00 9:00  
Kuffs (PG-13)  
7:15 9:15  
LIBERTY • 684-6020 • 684-6022  
The Addams Family (PG-13)  
7:00 ONLY!

**"ACTION - PACKED, SEXY AND FUN"**  
PG-13 Suits • PG-13 FICA

**★★★★★**  
**COLORFUL, FAST-PACED AND EXPLOSIVE!**  
Jack Garner  
GANNETT NEWS SERVICE

FOREST WHITAKER GREGORY HINES ROBIN GIVENS and DANNY GLOVER  
**RAGE IN HARLEM**

SPC Films Presents  
Friday & Saturday  
March 6 and 7  
7:00 and 9:30 p.m.  
Student Center  
Auditorium  
Admission \$1.00

**BEATLEMANIA LIVE!**  
A Living Tribute Performance Featuring the Performers from the Broadway Production  
**Sunday, March 8, 1992**  
8:00 pm (doors open at 7:00)  
Student Center Ballrooms

**TICKETS:**  
\$5 SIUC Students  
\$7 General Public  
available at: \*Student Center Central Ticket Office  
\*Discount Den  
\*Disc Jockey

Come to the show dressed up from any BEATLES era and win prizes! Best dressed will win grand prize. Judging will be before the show from 7-8 pm.  
Sponsored by SPC Consonis. For more info call 556-3393

**Manhattan Tap**  
TUE. 8 p.m.  
March 10  
453-ARTS(2787)  
\$11/13

A Quartet of Tap Dancers  
A Trio of Jazz Musicians

Premiering music composed by Ray Brown and choreographies to original music by the trio. Music of Scott Joplin, Charlie Parker—there is no music too fast, no steps too tricky for these hoopers—"One wild dance troupe"

**Shryock Auditorium**  
Celebrity Series  
Southern Illinois University at Carbondale

**CHECKERS NIGHT CLUB**  
**COLLEGE NIGHT**  
Alternative/Industrial music format  
**25¢ Drafts**  
NO COVER with Student I.D.  
760 E. Grand 457-2259

**LIBERTY THEATRE**  
Murphy Moore • 684-6022  
The Adventures of THE GREAT MOUSE DETECTIVE  
**STARTS FRIDAY!**

**FOX THEATRE** \$3.00  
Epsigate Mall • 457-5685  
**Once Upon A Crime**  
Doggone Funny  
PG  
**STARTS FRIDAY!**

**\$1.00 ALL SEATS**  
**SALUKI CINEMA**  
E. Grand Ave • 549-5622

**STARTS FRIDAY! GRAND CANYON**  
Jarring and Gritty.

**VARSITY THEATRE** \$3.00  
South Illinois St. • 457-6100  
**THE LAWNMOWER MAN**  
God Made Him Simple  
**STARTS FRIDAY!**

**GATSBY'S Bar & Billiards**  
*Thursday*  
45¢ Drafts  
\$1.75 Captain Morgans  
\$2.50 Pitchers  
Billiard Parlor Special:  
\$1.00 Jack Daniels  
LIVE MUSIC WITH: MOTORBREATH & THE BURN

**MURDER WEARS A MASK AT THE IMPERIAL HOTEL**

Sunday, March 8 at 2:00pm, Admission \$2.50  
Student Center First Floor

Be a detective, solve the murder mystery, and win fabulous prizes! Register in groups of 2-4 people at the SPC Office, 3rd Floor, Student Center by Thursday, March 5.

Prizes donated by Fiddlers & Blue Star Lique  
Presented by SPC Campus Events, Entertainment Publications, and the Student Center

**CLUELESS**



# Entertainment

Daily Egyptian

## Music royalties big business

By Ronn Byrd  
Entertainment Writer

Cash registers ring every time a song is played.

Because every time a song is played from the radio stations to the night clubs, it's an average of 12 cents in someone's pockets.

Every establishment that plays music from radio stations and restaurants to television networks and clubs must pay a Broadcast Music Incorporated licensing fee.

This fee is based on advertising revenue and circulation of the music playing establishment.

Founded in New York in 1940 to protect the performing rights of songwriters, composers and music publishers, BMI is the largest licensing organization in the world.

Robbin Arhold, vice president of corporate relations for BMI, said the market and outlets for music have changed drastically in the 50 years BMI has been in business.

"Initially, when BMI started, broadcast radio was the primary music player," Arhold said. "It certainly has evolved since then."

According to Arhold, BMI was founded for two specific purposes.

One was to offer representation to songwriters who could not get representation in the American Society of Composers, Artists and Producers, another licensing organization.

"ASCAP was the major organization of the day," Arhold said. "We introduced the competition to them, because until then ASCAP had a virtual monopoly."

The second purpose behind BMI was to offer music users a new source of music offering. Until BMI's inception, ASCAP would not license certain formats of music.

If a radio station wanted to play country western, they couldn't do it," Arhold said. "ASCAP would not handle country music, and if a radio station played it, they would be in violation of the licensing laws."

BMI employs a sampling process that monitors a cross-section of virtually every radio station in America each quarter. This ensures that every songwriter, composer and publisher is paid in direct relation to the use of their work.

BMI uses a complicated series of equations to calculate the listening audience. Using this information, BMI decides the rate to charge any place that plays their artists' music.

The Discount Den chain, one of which is located on Illinois Avenue in Carbondale, was threatened with legal action by BMI because they played music in their store and were not paying a fee.

"We got letters from BMI telling us they wanted us to pay an annual fee," said Paul Bartlett, president of Discount Den campus stores. "We eventually settled it. The only reason we didn't have to pay is because we sell music in our store, so we're exempt."

Bartlett also said BMI even sends him promotional tapes to be played in his stores now.

"We're promoting their artists, and they know that," he said.

But WCIL Operations Manager Tony Waitkus said he thinks it is questionable where all of the money is really going.

"I think there is a little bit of double dipping going on," Waitkus said. "We have to pay BMI and ASCAP money to play their music. Then BMI and



Staff Photo by Kevin Johnson

Heather Petty, speech communication major from Carbondale, browses through compact discs. Petty was at Plaza Records on Illinois Avenue Wednesday afternoon.

ASCAP will make a store pay money to play the radio for the music that we've already paid for."

"The rates keep going up all the time, regardless of the economy. It makes you wonder where all the money's going," Waitkus said.

BMI also licenses non-broadcast general music users, such as nightclubs, hotels, bars and restaurants. It is almost impossible to log each performance, so BMI uses the basic premise that songs being played are those currently popular.

So, royalties are collected from general music users and distributed according to performances on commercial radio and television stations.

Kevin DeWitt, manager of Frankie's Bar and Grill, said he wondered if the money was reaching those who deserved it, as well. He said the fee, \$400 for six months, is not too bad for Frankie's, but would be a financial strain for smaller establishments.

The money collected for actual playing and exposure is part of promotional royalties. Promotional royalties go to the actual writers or composers of the music, not the artists who perform them.

The artists who perform the songs, such as Paula Abdul or Madonna, are paid in mechanical royalties. These royalties are collected from the sale of music in an actual, tangible form, such as CDs or cassettes.

Chas Vale, manager of Disc Jockey Records in University Mall, said his store is exempt for the same reason as Discount Den.

"We're set up specifically to sell (BMI's) product," Vale said.

"Whereas radio stations and night clubs play music to keep themselves in business. If they were to charge us, it would be stupid."

Mechanical royalties are often divided between the record company, who publishes the CDs and tapes, and the artists themselves.

The rate the artists receive is decided at the signing of the record deal.

The record company also issues a flat fee at the signing of the contract. Nirvana received \$250,000 at the signing of their deal. Aerosmith received \$25 million.

Cable television performances also are tracked through the use of cue sheets. Licensed cable programmers provide BMI with a complete listing of their programming, including the cue sheets for their own original productions.

Live performances of classical music are figured through the collection of programs of symphony orchestra, concert halls and other smaller venues.

Performances for BMI artists outside the United States are tracked and figured by the local performing rights organizations, and payments are then forwarded back to BMI for dispersal to the songwriters, composers and publishers.

BMI songwriters, composers and publishers are paid on a scheduled basis. Statements and royalty checks for broadcast performances including cable television, college airplay and music services are distributed four times a year.

## "Rock Me Baby"

The SIU Geology Club is sponsoring a rock sale on **Saturday March 7th** we will be in the **Student Center Ballroom A**

**at 9:30 am to 3:30pm.**

**Come by this weekend and get rocked!**  
**For more information contact Jen at 536-8527**

★ TONIGHT ★

### CARTER & CONNELLEY



Miller Genuine Draft bottles...\$1<sup>25</sup>

Bacardi and Coke .....\$1<sup>50</sup>



## Tres Hombres

457-3308

119 N. Washington

### How To Take Tests Without FALLING APART

Cope with test anxiety by identifying and controlling unproductive thoughts which interfere with successful test performance. Tips on study habits and test taking will be covered. Co-sponsored by the Career Development Center.

Thursday, March 5  
3:00p.m.-4:30p.m.  
5:00p.m.-6:30p.m.

Mississippi Room, Student Center

For more information, contact  
the Student Health Program  
Wellness Center at 536-4441.



## HOW'S CLASS GOING?

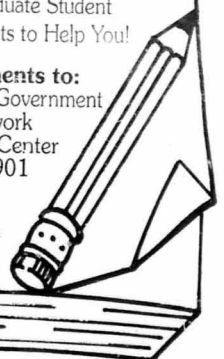
Are you getting your money's worth?  
Troubles with professors or teaching assistants?  
Advisement problems?

### Your Comments Can Make A Difference

Your Undergraduate Student Government Wants to Help You!

Send your comments to:  
Undergraduate Student Government  
Academic Casework  
Third Floor, Student Center  
Carbondale, IL 62901

Or stop by the office  
between 8 am and 5 pm  
or call at 536-3381



# All-faculty jazz quartet plays at Shryock Auditorium show

By William Ragan  
Entertainment Writer

Former students of Philip Brown's "History of Rock and Pop" class will attest to his out-of-tune piano playing when showing examples of music to students.

But Brown's main instrument is the double bass, and he played it with the New Arts Jazz Quartet last night in Shryock Auditorium.

The all-faculty band consists of Brown; Robert Allison, director of the SIUC Jazz Band, on trumpet and flugelhorn; geology professor Michael Krueger on electric guitar; and Tom Henshold on drums.

New Arts perform standards such as "What Is This Thing Called

Love," by Cole Porter and "Body and Soul" by Johnny Green, as well as raucous hard-bop offerings like Lee Morgan's "Ceora," Horace Silver's "Nica's Dream" and "Recordame" by Joe Henderson.

The group has performed consistently for the past year, playing to enthusiastic audiences at Mugsy McGuire's, Booby's, SPC Coffee House and the Alumni Center at Homecoming last semester.


Brown joined New Arts soon after he arrived at SIUC in January 1991, and he said the focus of the group changed once he joined.

"They concentrated on more original music," Brown said. "What we've chosen to do is to recreate a number of

styles—primarily cool jazz and hard-bop along with some standards."

He said it took about six weeks "for the dust to settle," but it wasn't long before the band began rehearsing on a regular basis. Their first appearance was at the Jazz Combo concert in spring 1991.

Most jazz combos employ a piano player to provide a chordal backdrop, but the use of a guitarist is a different approach, Brown said.



## Thursday

### Beer Garden Bar Open

### 9:00 p.m.

## \$1.75 Rumpleminze

## Welcome Sig Taus

Billiards  
Horseshoes
Open Daily 1:00  
457-5950
Darts  
Volleyball

## LAUGHFEST '92

Comedy in its finest form from four of Chicago's hottest new comedians  
Friday, March 6, 8 pm Ballroom D

Tickets \$3 at  
Student Center Ticket Office

All comedians have appeared at  
All Jokes Aside  
Funny Farm &  
The Improv  
in Chicago

Co-sponsored by BAC & BIB

## WINTER CLEARANCE SALE

10 - 75% off  
Entire Stock!!  
Now thru March 8

### BIG SAVINGS ON:

- Birkenstocks
- Rollerblades
- Kayaks
- Vaumets/ Ray-Bans
- Ski Jackets
- Boots
- Tents
- Packs
- Rappelling Gear
- Climbing Gear
- Fleece Wear
- Pants
- Thermal Underwear
- Water Filters
- Stoves
- Cookwear
- Bird Feeders



## SHAWNEE TRAILS

222 West Freeman

Campus Shopping Center (Next to Quatro's)

529-2313



Scratch And Dent  
One Of A Kind  
Odds And Ends  
Display Models  
Quantities Limited

**SPECIAL  
SALE PRICE  
NOW!!!**

## Craine Furniture and Appliances



Quality you can count on... today.



**\$6990** W/T

Model LA5800X Direct-Drive Washer  
Large Load Capacity • 7 Automatic Cycles • Water Temperature Control with 3 Wash/Rinse Options • 3 Water Levels • Easy-Clean Lin Filter • Gentle Wash System • Two Wash & Spin Speeds



**\$1990** W/T

Whirlpool RC8400XK built-in cooktop • Two 6" and two 6" high speed plug-in surface units • SPILLGUARD® cooktop • Flash-to-turn controls • Infinite-heat controls • Surface unit signal lights • One-piece chrome trim rings and reflector bowls



**\$3990** W/T

Whirlpool RB1009XK 24-inch built-in oven • Automatic MEAT THERM® cook • Minute Timer • Panoramic black-glass oven door



**\$6990** W/T

Whirlpool Model LB180X Electric Dryer • Large Load Capacity & Large Size Type & Size • Automatic DRY-A-MINUTE™ Control • Liner Signal • Tough DURAWHITE™ Interior



**\$3990** W/T

Whirlpool Gas Range Model RP302XV • Standard-Clean mode • Electronic Ignition • Porcelain-Enamelled Burner Grates • Ultra-SPILLGUARD® Cooktop • Solid Black-Glass Oven Door • Drop Door Roll-Out Broiler



**\$3990** W/T

Model DUB300KT featuring 4 Automatic Cycles



**\$3990** W/T

Whirlpool Electric Range Model RP302XV • Standard-Clean mode • Custom Broil Control • One 6" • Three 6" Plug-In Burners • Ultra-SPILLGUARD® Cooktop • Solid Black-Glass Oven Door (optional white or almond glass available) • Balanced Cooking System • Full-View Storage Drawer with Ultra-Pac Pac



**\$5990** W/T

Whirlpool No-Frost Refrigerator Model ET180XK • 18.1 cu. ft. Total Refrigerated Volume • Provision for Optional ICEMAGIC® Automatic Ice Maker • Best-Trough Vegetable Crisper and Meat Pan • Side-by-Side Adjustable Wire Shelves • Power Saver Switch



**\$6990** W/T

Whirlpool No-Frost Refrigerator Model ET180XK • 18.1 cu. ft. Total Refrigerated Volume • Provision for Optional ICEMAGIC® Automatic Ice Maker • Adjustable Bottom-Mount Gallon Door Storage Bin • Load Lock Door Shelf Dividers



**\$6990** W/T

Whirlpool No-Frost Refrigerator Model ET702K • 18.0 cu. ft. Total Refrigerated Volume • Provision for Optional ICEMAGIC® Automatic Ice Maker • Adjustable DURAWHITE™ Wire Shelves • Vegetable Crisper With Convenient See-Through Cover • Adjustable Meat Pan

**FREE PARKING BEHIND STORE**

## Craine Furniture and Appliances

22 S. 10th Street, Murphysboro, IL 62968  
604-2671  
(Just East of Courthouse)

# Graphic artist wins design award; first ever Rickert-Ziebold recipient

By Ronn Byrd  
Entertainment Writer

Art barriers broke at the Rickert-Ziebold award ceremony when a graphic artist walked away with first place.

Graphic design artist Jung Ah Kim said winning the Rickert-Ziebold award was especially exciting for her because this was the first time a graphic artist had been selected.

"I was really happy and my instructors were really happy," she said. "I thought (the judges) were not as impressed by graphic arts as by the fine arts. But by being selected, I broke the barrier."

Six artists will divide the trust award, which is given to reward

outstanding graduating seniors from the School of Art and Design.

Thirty works by these artists will be showcased March 6-13 at the University Museum.

The six artists who will exhibit their work are Greg Binder of Joliet for painting, Robert Hilpert of Belleville for painting, Hsing-Chao Chen of Taiwan for drawing, Jung Ah Kim of Seoul for graphic design, Najjar M. Abdul-Musawwir of Carbondale for painting and Scarlet Coy of Mahomet for drawing and painting.

The trust award has been presented for the last 17 years. In that time, as many as 10 and as few as two students have shared the \$20,000 prize.

Benjamin Meeker, assistant

curator of art, said he was impressed by this year's winners.

"In the past, some of the undergraduates exhibits haven't been all that strong," he said. "I've been setting up this year's exhibit, and there are a couple of pieces here that could go straight into a museum because they're so good."

Kim said she was glad to be a part of the exhibit along with the other artists.

"They are all really great," she said about the other exhibits. "It is nice having my works appreciated by people and having them see what I do."

A dinner reception for the winners will be March 6, followed by a reception open to the public from 8-10 p.m.



**Frankie's**  
Thursday

- 1.75 16 oz Long Island Iced Teas
- 1.50 Lite bottles
- .75 Kamikaze
- 1.50 Bud Light bottles
- 1.00 Old Style bottles

**Our Beer Garden is open!**  
**DJ Tonight**

**BAR & GRILL**  
204 W. College 457-4250



## Neil Simon's Barefoot in the Park

One of the most successful comedies in American stage history!

**BRIGHT, LITERATE... AND IRRESISTABLY FUNNY!**

**Tuesday, March 10**  
Dinner- 6:30 p.m. Play-7:00 pm  
Student Center Ballrooms C & D

**\$4.50 - Play only**  
**\$7.95 - Picnic Dinner & Play**

**Menu Includes:**  
(Fried Chicken, Cole slaw, Potato Salad, Soft Drink)

Tickets on sale at the Student Center Ticket Office and at the door

Sponsored by Student Center Special Programs  
Produced By  
REPERTORY THEATRE OF AMERICA/Omega Players  
A National Touring Company

## Section closed? Course cancelled? We might have the class you need.

Space is still available in the following courses through the Individualized Learning Program. In ILP courses students use a study guide instead of attending lectures. Each course carries full SIUC residential credit. Students can register throughout the semester.

### Spring 1992 Offerings

East Asian Civilization GEC 215-3  
Understanding the Weather GEA 330-3  
The Sociological Perspective GEB 108-3  
Modern America 1877-Pres. GEB 301-3  
Meaning in the Visual Arts GEC 204-3  
Intermediate Algebra GED 107-3  
Intro. American Govt. & Pol. GEB 114-3  
Politics of Foreign Nations GEB 250-3  
Applications of Tech. Info. ATS 416-3  
Medical Terminology AHC 105-2  
Survey of 20th Century Art AD 347-3  
Primary Flight Theory AF 200-3  
Aircraft Electrical Sys. ATA 210-2  
Electronics for Aviators ATA 200-3  
Avionics Shop Practices ATA 203-4  
Consumer Problems CEFM 340-3  
Intro. to Electronics ELT 100-3  
Computer Sys. Applic. ELT 224-3  
Introduction to Security LE 203-3  
Insurance FIN 310-3

\*Offered through ILP but not on campus

Music Understanding GEC 100-3  
Moral Decision GEC 104-3  
Elementary Logic GEC 208-3  
Hospitality & Tourism FN 202-3  
Front Office Management FN 372-3  
American Indian History HIST 366-3  
Contemporary Japan JPN 370-3  
Law of Journalism JRN 442-3  
Intro. to Public Admin. POLS 340-3  
Contem. Intergov. Relat. POLS 413-3  
Pol. Sys. American States POLS 414-3  
Public Financial Admin. POLS 443-3  
Soviet Civilization RUSS 470-3  
Intro. Technical Careers TC 100-3  
Technical Writing TC 102-2  
Technical Math TC 105(a,b)-2  
Applied Physics TC 107(a,b)-2  
Fiscal Aspects Tech. Careers TC 120-3  
Welding & Blueprint Reading TT 183-2  
\*On-campus students need inst. permission  
\*In prep., check for availability

For more information, call the Division of Continuing Education (536-7751)



Now accepted



NO  
CLOSED  
CLASS  
CARDS!

VISA

# Daily Egyptian

# 536-3311

MasterCard

## CLASSIFIED DISPLAY ADVERTISING

Open Rate.....\$ 7.45 per column inch, per day  
Minimum Ad Size: 1 column inch  
Space Reservation Deadline: 2 p.m., 2 days prior to publication  
Requirements: All 1 column classified display advertisements are required to have a 2-point border. Other borders are acceptable on larger column widths. Absolutely no reverse advertisements are acceptable in classified display.

## CLASSIFIED ADVERTISING RATES

(based on consecutive running dates) Minimum Ad Size: 3 lines, 30 characters per line

1 day.....80¢ per line, per day  
3 days.....64¢ per line, per day  
5 days.....58¢ per line, per day  
10 days.....47¢ per line, per day  
20 or more.....39¢ per line, per day

Copy Deadline:  
12 Noon, 1 day prior to publication

## SMILE ADVERTISING RATES

**\$3.10 per inch**

Space Reservation Deadline: 2 p.m., 2 days prior to publication.  
Requirements: Smile ad rates are designed to be used by individuals or organizations for personal advertising—birthdays, anniversaries, congratulations, etc. and not for commercial use or to announce events.

# CLASSIFIED CLASSIFIED CLASSIFIED CLASSIFIED

## FOR SALE

BAHAMAS/FLORIDA VACATION 8 days / nights \$123 per person. For more info call 565-2442.

## Auto

'87 NISSAN STANZA GXE, white, 4 dr, auto, fully loaded, 56k, clean, perfect run, must sell, \$5250. 457-5307

'81 BUICK REGAL dependable, good shape, am/fm, good tires, need cash. \$1000 obo. Call 457-6580.

'81 MAZDA 626, 4-door, 5-sp, a/c, am/fm, sunroof, 56k, clean, must sell \$900. Call 549-7580 after 6pm.

91 ACCORD EX, auto, 14,500 miles, White, Momo wheels, Alpine CD changer, ADS power, Clarion Stereo, MB Quartz speakers, alarm system & starter kit. Call 457-8711 message.

87 HONDA CIVIC DX 2-dr, hatch, 5-sp, 4 new tires, am/fm, v. g. cond., must sell, make offer. 549-0296

'87 NISSAN 300ZX 51,000 miles, Very Sharp \$7295. Call 964-1547

86 1/2 EX-3 01X white, 77,000 mi. new tires, clutch, balls, lined, bra, loaded, sharp \$5995 obo. 457-0135.

85 MAZDA RX7 GSL, 4-door, 5-sp, air, sunroof, tinted windows, levers, cass. Exc cond. \$4,500 OBO. 529-5376 after 5pm.

85 TOYOTA CELICA GT, 100k mi. v. clean, a/c, new tires, pb, cruise, ps, stereo \$3900 obo. Call 549-2303.

84 HONDA ACCORD LX. Excellent cond. a/c, cruise, new tires, new stereo. Selling for \$3,150 OBO. 457-5387.

84 MAZDA 626 LX, 4-door sedan. Am/fm, air, cass., all power options, excel cond, asking \$2725. 457-8955

84 NISSAN 200 SX, hatchback, loaded, sunroof, 917k, exc. cond., \$3900 obo. 529-4893/549-2307.

80 CHEVY MONZA, black, 5-speed, dependable, best offer. Call 457-6610.

79 OLDS CUTLASS runs good, bronx, 77k, \$850 OBO. Call 549-5000 ask for Jarrett.

**CAR ALARMS**  
**Mobile Audio**  
**985-8183**

72 T-BIRD 429, runs and looks very good, low miles, only \$1200. Call 985-8370.

Daily Egyptian Classified  
536-3311

GLOBAL Auto  
IMPORT PARTS  
The Foreign Parts Experts  
104 S. Marion  
529-1644 • Carbondale

**The Auto Shop**  
**Auto/Radiator Repair**  
**Foreign & Domestic**  
**457-8411**

**STEREO REPAIR**  
**Mobile Audio**  
**985-8183**







**NICE 2-BDR DUPLEX** at edge of town, 5 min. from campus, private road, **avail. May**, quiet, renter wanted. 549-0081, 457-4210.

**DISCOUNT HOUSING** 182 bdrm furn apt. Cable, absolutely no pets, 2 miles west from Krogers west. Call 684-4145

**ONE BDR FURN** apt., util. inc., good for seniors or grad student, no pets, lease, deposit, call after 4 p.m. 684-4713.

**MILL ST. ACROSS** from Whom Bldg. 12,3 bdrm. furn. No pets. Some util. incl. On site parking. 529-2954.

### Houses

**AVAILABLE NOW.** 2 BDRM HOUSE, carpeting, gas heat, large living room, large yard, mowing done. \$350. 549-3930

**3 BDRM HOUSE.** 1 1/2 bdr back yard, car port, low utilities. 2 tenants must be referred. 549-0081, 529-1539

**IF YOU WOULD** like a copy of our 6th annual brochure (free) listing some of C'dale's best rental property, call 529-2013 or 457-8194 Chrs B.

**SUMMER OR FALL**, walk to campus, extra nice, 1,2,3,4 & 5 bdrms. furn. or unfurn., a/c, carpeted, no pets. 549-4808 (noon - 9:00 p.m.)

**305 S. BEVERIDGE** 3 leases wanted for fall semester. Nice 3 bdrm, full basement. Call 202-454-3035.

**ENGLAND HTS.** 2 bdr, country setting, carpeted, gas appliances, air/heat, pets \$325/mo. Available. 457-7337 or 457-8220 after 5

**WALK SIU FROM 504 S.** Washington, 5 bdrm \$650, 2 bath 2 kitchen, open May 15th. 457-6193

**NICE, QUIET TWO BDRM.** unfurn., one mi. east rt. 132, ideal for family or professional, W-D hook up, garage, \$525 per mo., 457-5017, yr lease, deposit, no pets. 529-2535 9 p.m.

**DISCOUNT HOUSING** 2, 3, & 4 BDRROOM furnished houses. Cable, absolutely no pets, 2 miles west from Krogers west. Call 684-4145

**DISCOUNT HOUSING, LUXURY** 3 bdrm, furn house, wall to wall carpeting, central air, car port, cable, absolutely no pets, 2 miles west from Krogers west. Call 684-4145

**TOP C'DALE LOCATION** furnished geodesic dome for two. Absolutely no pets. Call 684-4145

**4 BDRM., C/A, W/D, part. furn.** \$500/mo., \$400 dep., avail. 5/15/92, one year lease. Call Mike 453-6785 Jays, 549-1387 evs.

**BEAUTIFUL COUNTRY SETTING.** Need to new golf course. 2, 3, & 4 bdrms, a/c, LAKE & POOL PRIVILEGES, \$2000/BDRM. 1 1/2 north on Travel Lodge off New Era rd. 529-4808.

**C'DALE NINE** very nice 2 bdrm. Carport, storage, a/c, w/d. Couple or mature individual. Short term lease, April through July. Occupancy and rent neg. 797-3779 after 6 m.

**AVAILABLE NOW** For Full-time students, 2 bdrm, 2 bath, furn. house, basement, garage, washer/dryer, window air, absolutely no pets, 2 miles west from Kroger west, call 684-4145

### Mobile Homes

**A GREAT DEAL.** We have the lowest price for the best places. Be ready to rent when you call. Check us out. Be the first for the best. \$125-450. Pets r. 529-4444.

**WEDGEWOOD HILLS.** 2-BDR, furnished, central air, storage shed, patio, no pets. Call 549-5966, 1-5 p.m.

**TWO MILES EAST C'DALE** Clean, quiet, 2 bdrm, furn deposit. No pets! 549-3043 Keep trying

**12 & 14 WIDE, furn., carpeted, A/C, gas appliances, cable TV, Wash House laundry, very quiet, shaded lots, starting at \$200 per mo, 2 blocks from Towers. Showing M-F, 1-5 or by appt. 905 E. Park. 529-1324. NO PETS. PARKVIEW MOBILE HOMES**

**CAMELIA.** 10 x 55, \$150 per month, deposit required, no pets, 985-6971 days, 985-2703 evenings.

**SUPER NICE SINGLES** and doubles located one mi. from SIU. Natural gas furnace, o/c, carpeting, well maintained. Special winter rates. Now leasing for Summer and 92' School year. Contact Illinois Mobile Home Rental 833-5475.

**2 BEDROOM TRAILERS**, unfurn., util. and trash inc. Spring \$140 & Fall \$160 per month. 529-1539.

**EXTRA NICE ONE,** two & three bedroom. Carpet, Furnished, A/C, no pets. 549-0491

**STUDENT PARK.** Nice 2 bdrm. \$170-250, you may qualify for summer rent incentives. 549-8238

**NICE, CLEAN, 3 BDRM.** includes water and washer/dryer. Utility outside water. May 15th. \$330. 457-6193

**NICE TWO BEDROOM.** quiet setting, furnished, unfurnished, NO PETS, 457-5266.

**SINGLE STUDENT HOUSING,** 175/mo., \$125 deposit, water, trash included, 549-2401.

**ATTENTION STUDENTS!** Take this test. Is it smarter to rent or to invest. Answers at Wildwood Mobile Home Sales, 375 Miles S. of Hwy 13 on Giant City Rd. Carbondale. 529-5331.

**MOBILE HOME FOR RENT** (C'dale). 2 bedroom trailer in small quiet park. Call 893-4939, Available now.

**COME LIVE WITH us,** clean, quiet park. Furnished, air, excellent for 1 person or bring a friend. Rents from \$150-300/mo. 3, 9, & 12 month leases available. Call 529-2432 or 684-2663.

**WALK TO CAMPUS** 2 & 3 bdrm. furn. lg shaded lots. Rent starts at \$240/mo. Summer sem. specials avail. 549-0895.

### Townhouses

**IF YOU WOULD** like a copy of our 6th annual brochure (free) listing some of C'dale's best rental property, call 529-2013 or 457-8194 Chrs B.

**747 E PARK** new 2 bdrm, 2 bath, private fenced back, full size wash/dry, garden window, breakfast bar, ceiling fans, energy efficient cond. \$530 or call 529-2013/457-8194 Chrs B

**NEAR THE REC** 3 bdrm, 2 bath, fenced patio, all appliances, huge living room, energy efficient construction, \$750 Avail Aug. 529-2013 or 457-8194 Chrs B

**2 BDRM NEAR C'dale clinic** huge kitchen with all appliances, private in-unit patio, skylights, grads or professionals. \$550 avail now & Aug 457-8194 or 529-2013 Chrs B

### Duplexes

**BRECKENRIDGE CTS.** Nice 2 bdrm., unfurn, air, carpet, appliances, energy efficient, 1/2 mi. S 51. 457-4387.

### Rooms

**PRIVATE, SINGLE ROOMS.** CARBONDALE, for SIU students. Each room is in an apartment with two or more other rooms, each room leased to another student. Some of the apartments are for women students only, and some are for men students only. Each lessee has a private room, many with private refrigerators in the room, but use the bath, kitchen, & lounge with the other lessees. All utilities are included in rents. Less than one block & not more than two blocks from camp is, due north of the University Morris Library, easy walking to campus. Rent per month ranges from Summer \$130 to Fall & Spring \$200, depending upon size of room. Heat & air. Owner does maintenance, pest control & refuse pickup. Very competitive rents. Shown by appointment only, Office at 711 South Poplar Street, junction of West Mill Street & South Poplar Street, across West Mill Street from campus, due north of University Morris Library. Telephone 457-7352 & 529-5777, 0130 PM to 0530 PM.

**PRIVATE ROOMS** \$175/mo. Summer \$145. All util. incl., furn., well maintained. Int'l students 549-2831

### Roommates

**CREEKSIDE APTS.** LARGE, 2 bdrm. w/in apt., with new furn, water & electricity incl. \$275/month 529-2220.

**12 x 60 TRAILER.** Deck, micro, cable tv, elec., heat, new carpet, \$170/all util. inc., 549-3897 after 5

**FEMALE ROOMMATE** to share 3 bdrm. Meadowridge apt. \$200/mo. 6 mo. lease. 529-5586 or 965-3735.

**SENIOR STUDENT** looking for non-smoking roommate 92-93. Call 529-4347 ask for Lori.

**FEMALE TO SHARE** large furn home. Includes w/d, all appliances, quiet neighborhood. 687-1774.

**LARGE UNFURN. BEDROOM.** wood floor, walk in closet, private half bath, appliances, \$250/mo. everything included. Call 457-4586.

**WANTED: ROOMMATE.** SHARE apartment with disabled male. Call 457-3362 after 3p.m.

### Mobile Home Lots

**CARBONDALE, ROXANNE PARK.** Close to SIU, cable, quiet, shade, natural gas, sorry, no pets. 2301 S. Ill. Ave. 549-4713

### Business Property

**CARBONDALE RETAIL OR OFFICE.** Redecorated, 575 Sqft, \$400 per month. 201 W. Walnut. 457-5438.

### Sublease

**SUBLEASE NEEDED IMMEDIATE** male or female. Big 6 bdrm. house, quiet area, 2 bath. \$160/mo. 529-5292.

**FEMALE NEEDED IMMEDIATE** 4 bdrm apt. Lewis Park. \$190/mo. Plus 1/4 util. Sum. also avail \$135/mo. 457-3575.

**SUBLEASE NEEDED IMMEDIATELY** at Creek Side Condos includes 3 bdrm, 2 full baths plus 1/4 util. Comes furnished except for bdrm. 457-8963

**FEMALE SUBLEASE NEEDED** for new townhouse on E. Park this summer. Has w/d and is very nice. \$520 5/20-8/14. Call Tonia 549-2043.

**1 SUMMER SUBLEASE** needed, a/c, w/d, good parking, very close to campus. Call 549-8387.

**GRAND PLACE (NEW)** needs one sublease immediately. Close to campus, w/d. 457-2470.

### HELP WANTED

**LAW ENFORCEMENT JOBS.** \$17,542-\$86,682/yr. Police, Sheriff Positions, Correctional Officers, Call (815) 962-8000 Ext. K-9501

**AVON NEEDS REPS** to sell Avon in all areas. Phone 1-800-879-1566.

**WANTED: SUN & PARTY HUNGRY PEOPLE!** SPRING BREAK! Cancun, Bahamas from \$259.00 includes roundtrip air, 7 nights hotel, parties, free admission and more! Organize a small group. Earn free trip. 1 (800) BEACH IT.

**FAST FUNDRAISING PROGRAM.** Fraternities, sororities, student clubs. Earn up to \$1000 in one week. Plus receive a \$1000 bonus yourself. And a FREE WATCH just for calling 1-800-932-0528 Ext. 65.

**Malibu Village**  
New Renting for Summer & Fall  
Large Townhouse Apts.  
Hwy 51 South Mobile Homes  
12 & 14 wide, with 2 & 3 bedrooms,  
locked mailboxes, next to laundrymat.  
9 or 12 month lease. Cable Available.  
Call:  
**Debbie**  
**529-4301**

**Now Renting For Summer & Fall**  
Pyramid Apartments  
516 S. Rawlings  
549-2454  
Egyptian Apartments  
510 S. University  
457-7941  
(on site management)  
Bonnie Owen  
Property Management  
816 E. Main 529-2954

**ALL NEW**  
2, 3 & 4 Bedroom Townhouses  
• Dishwasher  
• Washer & Dryer  
• Central Air & Heat  
**LUXURY**  
Available Fall 1991  
529-1082

**INTERNATIONAL Promotional** sales opportunity. Call Greg Holland (303) 369-1626 (24-hr rec msg)

**SUMMER RESTAURANT HELP** Wanted. The Kelsey Road House. Waiters, Waitresses, Hosts, Bartenders, Cooks & Bussers. Write: 352 Kelsey Road, Barrington, IL 60010. Call (708) 381-5071 or stop in over Spring Break for an interview.

**PART TIME MAINTENANCE** man repairing trailers, must have experience, car, & tools. 529-1539.

**\$40,000/yr! READ BOOKS** and TV Scripts. Fill out simple "like/don't like" form. EASY! Fun, relaxing at home, beach, vacations. Guaranteed paycheck. **FREE 24 Hour Recording** 801-379-2925 Copyright #IL24KEB

**EASY WORK! EXCELLENT PAY!** ASSEMBLE PRODUCTS AT HOME. Call TOLL FREE 1-800-467-5566 ext. 9330

**Award-winning Christian film** company has openings for summer interns on dramatic film production. Expenses paid, great experience. Please call (808) 835-5333.

**MALE AND FEMALE actors** wanted for student film. Call Russ Green at 549-4482, or leave message.

**YOUTH COUNSELOR** Part-time position. 20 hours per week. Duties include providing counseling, case management, and emergency services to runaway and out of control youth and their families. Requirements are a bachelor's degree in a human service field, two (2) years counseling and crisis intervention experience with youth and their families. Salary is \$9,100/year. Send resume and three references to Youth Services Program Coordinator, 604 E. College, Carbondale, IL 62901. Deadline for application is March 13, 1992. E.O.E.

**SUMMER CAMP JOBS:** Stop by the Student Center Thursday, March 5 to talk to some area camp directors about opportunities. 9 a.m. - 2 p.m., Hall of Fame Area, First Floor, South end. Questions call 453-1121 or 942-3164.

**APARTMENTS**  
**SIU APPROVED**  
**For Sophomores & Up**  
9 mo. Contracts  
Furnished  
Close to Campus  
A/cond.  
Cable TV  
Pet  
Starts at \$163./month per person  
Efficiencies & 3 bdrm. Apts.  
For 92-93  
**THE QUADS**  
"The Place with Space"  
1207 S. Well  
457-4123  
Show Apt. 1-5 p.m.  
Mon., Wed., Fri.

**Malibu Village**  
New Renting for Summer & Fall  
Large Townhouse Apts.  
Hwy 51 South Mobile Homes  
12 & 14 wide, with 2 & 3 bedrooms,  
locked mailboxes, next to laundrymat.  
9 or 12 month lease. Cable Available.  
Call:  
**Debbie**  
**529-4301**

**Now Renting For Summer & Fall**  
Pyramid Apartments  
516 S. Rawlings  
549-2454  
Egyptian Apartments  
510 S. University  
457-7941  
(on site management)  
Bonnie Owen  
Property Management  
816 E. Main 529-2954

**ALL NEW**  
2, 3 & 4 Bedroom Townhouses  
• Dishwasher  
• Washer & Dryer  
• Central Air & Heat  
**LUXURY**  
Available Fall 1991  
529-1082

**ASSISTANT SUPERINTENDENT** of print Shop Daily Egyptian, Southern Illinois University at Carbondale seeks immediately an Assistant Superintendent of printing, part-time nights 15% extra pay, apartment must have roll/die, offset press experience on a Harris Colltrall V1.5A, V22, V25, or Goss Community Press. Ideal for retired person wanting to earn extra income. Call 536-3311 for more information. Send resume to: Daily Egyptian, C/O Cathy Hager, Communications Building, SIUC, Carbondale, IL 62901. SIUC is EOE.

**SIUC/Wellness Center** Graduate Assistantship Positions open beginning Fall 1992. To apply, request application form at the Wellness Center, Kessler Hall, (618) 536-4441. Send application, cover letter, resume, and names, addresses, and phone numbers of three (3) references to: SIUC Wellness Center, Kessler Hall, Southern Illinois University at Carbondale, Carbondale, IL 62901. Attn: Recruitment. Deadline to apply: 4:30p.m., March 16, 1992. Qualifications: Bachelor's degree in a related field and admission to graduate school. Desirable qualifications include: background in counseling skills, leadership experience, program development, health promotion, public relations or research, depending on program area applied for (such as Stress, Nutrition, Alcohol/Drugs, Sexuality, Peer Education, Quality Assurance, and Medical Self-Care). Knowledge in program content area, good verbal and writing skills, and interest in wellness philosophy necessary.

**SUMMER CAMP** Stop-by the Student Center, Thursday, March 5, to talk to some area camp directors about opportunities 9am-2pm, Hall of Fame area, first floor, South End. Questions call 453-1121 or 942-3164.

**ASSEMBLERS:** Excellent income to assemble products from your home. Info. 504-646-1700. DEPT. P4064

**TUTORS:** MIRACLE TUTORING can cut your advertising costs & provide student referrals. 1-800-788-0952

**RECEPTIONIST/SECRETARY.** Local bank seeking part-time, excellent typing skills & word-processed knowledge. Mail resume to Box #20825, c/o Daily Egyptian, SIUC, Carbondale, IL 62901. Equal Opportunity Employer

**Sixteen Active Reasons to live at University Hall**  
1. Soloing in your own suite  
2. Skydiving at Marissa  
3. Six Flags at Eureka  
4. Shopping in St. Louis  
5. Volleyballing in UHALL's Courtyard  
6. Swimming in UHALL's Heated Pool  
7. Dining on Chef-Prepared Meals...  
8. Enjoying common areas cleaned daily  
9. Videoing in UHALL's Safari Lounge  
10. Pooling in the Billiard Room  
11. Barbequing at UHALL's Pool Side  
12. Breakfasting Midnight Finals Week  
13. Skiing at Hidden Valley  
14. Basketteballing at UHALL's Court  
15. Walking to SIU  
16. Signing for a surprisingly good value.  
**VISIT UNIVERSITY HALL**  
**TODAY...Suites available from \$265.00\* monthly**  
**549-2050**  
Corner of Wall & Park, Carbondale  
\*reservation fee, chaf. security deposit extra.

**S'LIKE**  
into the classified pages.  
They're loaded with...

- apartments
- automobiles
- appliances
- furniture
- sporting goods
- pets
- help wanted

There is something for everyone's tastes & needs.

**Daily Egyptian**  
**536-3311**

ASSISTANT DIRECTOR, ALUMNI SERVICES SOUTHERN ILLINOIS UNIVERSITY AT CARBONDALE

The Alumni Services/SIU Alumni Association is seeking a qualified applicant to serve as the Assistant Director of Alumni Services/SIU Alumni Association for Member Services. **RESPONSIBILITIES:** Full-time administrative professional position primarily responsible for 1) planning and implementing marketing strategies to annually increase membership in the Alumni Association; 2) assisting in the collection of information about alumni attitudes; 3) supervising the membership billing system; 4) establishing an Alumni Association volunteer network to assist in the University efforts of recruitment, placement, lobbying, and fund-raising; and 5) overseeing member services program. Overnight travel is required.

**QUALIFICATIONS:** Bachelor's degree in marketing, management, or related business field is required. Preference given to SIUC graduate. Experience in membership marketing or professional sales with documented track record is highly desirable. Advertising and public relations experience also considered. Excellent communications skills required: written and verbal skills necessary; computer and word processing experience and budget preparation knowledge desirable.

**POSITION AVAILABLE:** Immediately. Salary commensurate with experience and qualifications. For full consideration, an application, a professional data sheet, and three (3) current letters of reference should be received by March 27, 1992. Send to: Executive Director, SIU Alumni Association, Carbondale, IL 62901-4420.

SIU IS AN AFFIRMATIVE ACTION/ EQUAL OPPORTUNITY EMPLOYER

LOCAL BANK SEEKING part-time teller. Experience preferred. Send resume to Box #26561, c/o Daily Egyptian, SIUC, Carbondale, IL 62901. Equal Opportunity Employer.

**HOME TYPISTS:** PC users needed. \$35,000 potential. Details. Call (1) 805 962-8000 Ext. B-901.

**GOVERNMENT JOBS** \$16,040-\$59,230/yr. Now Hiring. Call (1) 805 962-8000 Ext. R-9501 for current federal list.

**CRUISE LINE ENTRY** level on board/ landside available, year round or summer. 813-229-5478

#### SERVICES OFFERED

**NEW ENGLAND BROTHER/SISTER CAMPS - MASSACHUSETTS**

Moh-Kee-Nac for Boys/Danbee for Girls. Counselor positions for Program Specialists: All Team Sports, especially Bc, eball, Basketball, Field Hockey, Softball, Soccer and Volleyball; 25 Tennis openings; also Archery, Rifle, Weights/Fitness and Biking; other openings include Performing Arts, Fine Arts, Newspaper, Photography, Cooking, Sewing, Rookerolling, Rockery, Ropes, and Camp Craft; All Waterfront Activities (Swimming, Skiing, Sailing, Windsurfing, Canoe/Kayaking). Inquire: Moh-Kee-Nac (BOYS) 190 Linden Avenue, Glen Ridge, NJ 07028. Call 1-800-753-9118. Danbee (GIRLS) 17 Westminster Drive, Montville, NJ 07045. Call 1-800-729-8606.

**LEGAL SERVICES: DIVORCES** from \$250. DUI from \$275. Car accident, personal injuries, small claims, general practice. Robert S. Folz, Attorney at Law. 457-6545.

**Typing and Word processing.** The Office, 300 E. Main, Suite 5. Call 549-3512.

**I DO GENERAL handyman work,** painting, yardwork, & small repairs. Call 549-2090

The D.E. CLASSIFIED'S results will blow you away!

**BASEMENTS FOUNDATIONS** WATERPROOFED, repaired, masonry, concrete, stone and tile work. Floors leveled. Dan Swafford Canal W. Frankfort 1-800-762-9978

**TWO BROTHERS ROOFING/GENERAL CONSTRUCTION,** also Lawn-care And Tree Service. 549-7691.

**WRITING, EDITING, TYPING,** Confidential. I Make you Look Good ask for Ron 457-2058.

**RESUMES! RESUMES!** RESUMES! 20 years experience. Ask for Ron 457-2058.

**HOUSE CLEANING AVAILABLE** at reasonable rates. Call 457-3377, and leave message.

**GARDEN TILLING, LAWN CARE,** carpentry work. **Beaucoup Experience.** 457-5974.

#### WANTED

**GOLD, SILVER, BROKEN jewelry,** coins, sterling, baseball cards, glass rings, etc. J & J Coins, 821 S. Illinois, 457-6831.

**\$500 TO \$1000 WEEKLY** processing mail, free supplies, send a S.A.S.E. to G & R Company Rt 1 Box 6074 Sesser, IL 62884

**SOFTBALL PLAYERS WANTED** for men's spr/sum leagues. Quality OF, P, & C needed call 549-3658.

#### LOST

**LOST GOLD BRACELET** sentimental value. REWARD! Call Susan 457-2790

**FREE INFORMATION FOR STUDENTS WHO NEED SCHOLARSHIP MONEY** 1-800-238-0690



**SHAWNEE CRISIS PREGNANCY CENTER**  
• Free Pregnancy Testing  
• Confidential Assistance  
549-2794  
215 W. Main

Congratulations to  
**Bill Rongey**  
**ΔX**

For being elected  
**"GAM MAN"**  
from  
your Delta Chi Brothers!

**45th Annual Theta Xi**  
**All Campus Variety Show**  
**March 7th 8:00 pm**  
**Tickets on sale at**  
**Student Center**  
**\$4.00 per ticket**

"Once upon a time...  
...Happily ever after."

#### FOUND

**PUPPY - PART BLACK Lab.** Found in Warren Rd. area. Contact Humane Shelter 457-2362.

**MALE PUPPIE SHEPHERD/COLLIE MIX,** with a leather collar, found in front of Ventures. 549-4650.

#### ENTERTAINMENT

**FLORIDA VACATION** in May. lux. condo fully equipped (W/D, MW, CTV, DishTV) on beautiful Gulf Coast beach, Tampa area. 2 bdrms, 2 baths, sleeps 6, pool, jacuzzi, rent from owner, 5/23-30, \$499, 529-3435.

#### ANNOUNCEMENTS

**SUMMER OPPORTUNITIES FOR SOPHOMORES**

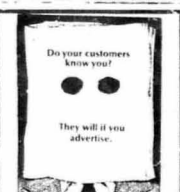
Apply now for six weeks of leadership and challenge. With pay. Call Army ROTC, 453-5786.

**MINI-STORAGE.** All sizes, like new. Carbondale Industrial Park. Phone 457-4470

**DAVE SIM, CREATOR OF CEREBUS** the aardvark, appearing at the Comic Headquarters in St. Louis, March 6th. 314-487-9442.

**FREE DIANETICS LECTURE** Sunday March 8, 1pm. Morris Library 1st fl conference room. SIU Carbondale.

Heading for EUROPE. his summer? Just there anytime for \$169 from the East Coast, \$229 from the Midwest (when available) with AIRHITCH (Reported in L.A. Gal & NY Times). For details: AIRHITCH 212-864-2007.



**Unmask your business.**  
Advertise in  
**Classified Display!**  
**Daily Egyptian**  
536-3311



**CONGRATULATIONS TO THE FOLLOWING DELTA ZETAS FOR MAKING A 3.0 AND ABOVE KEEP UP THE GREAT WORK!!**

Bethany Bounds	3.20
Ann Burns	3.23
Angie Chochorowski	3.40
Mindi Cobern	3.00
Tara Coyle	4.00
Marilee Cuthbertson	3.50
Jackie Debatin	3.57
Katy Diedrich	3.16
Tricia Elliott	3.07
Lori Ford	3.00
Patty Gillham	3.52
Tricia Goebel	3.28
Beth Grabowski	3.25
Michelle Harry	3.33
Nicole Hoffek	3.00
Jen Husek	4.00
Karen Ignazio	3.53
Leslie Juister	3.00
Candice Jusits	3.16
Christine Koris	3.82
Lezlie McEvers	3.40
Heather McNabb	3.53
Andrea Petty	3.44
Maria Quane	3.35
Judi Quigg	3.00
Jodi Shindewolf	3.35
Stephanie Stephens	3.29
Tiffany Summers	3.25
Amy Taylor	3.75
Lisa Terry	3.50
Lisa Wiemken	3.25
Barbara Wilson	3.35

We love you  
your sisters



To the Ladies of  
Delta Zeta  
from the Gentlemen of  
Delta Chi  
**"LET'S TAKE IT ALL AT THETA XI!"**  
**ΔX**

**WE LOVE OUR SIGMA SIGMA SIGMA INITIATED MEMBERS**  
**-Σ♥-**  
**THE SPRING 1992 PI PLEDGE CLASS**

The Interfraternity Council of Spring 1992 would like to announce our Executive council:

President	Dan Moed
Vice President	Keith Souza
Secretary	Jeff Baker
Treasurer	Eric Hundley
Programming	Al Cano
Public Relations	Markus Kuo
Social	George Irvin
Sports	Bill Schumaker
Scholarship	Bob Barrett



IFC Executive Council nominations for new executive council will be held on March 26

TKE ΣΦΕ ΣΠ ΣΤΓ ΦΣΚ

The Ladies of Delta Zeta would like to congratulate our sisters
Michelle Harry pinned to Carson Flugstad ΔX
Christine Schoenberg pinned to Chris Boyle AXP
Tricia Elliott inactivated to Jeff Nester ΔX
Barbara Wilson inactivated to Rich Collins ΔX
Heidi Schwarzkopf inactivated to Mike Stoeck ΔX
Carolyn Briggs inactivated to Jim Dabler IKA
Carrie Anderson inactivated to Tom Wengler ΣΦΕ
Judi Quigg inactivated to Warren Toepper ΘΕ
Lisa Terry inactivated to Rich Hoppert ΦΣΚ
Lori Ford inactivated to Tom Halden IKA

We wish you all the best!  
Love, The Ladies of ΔZ



# Comics

Daily Egyptian

Southern Illinois University at Carbondale

## JUMBLE

THAT SCRAMBLED WORD GAME by Henry Arnold and Bob Lee

Unscramble these four jumbles, one letter to each square, to form four ordinary words.

HYLYS  
TOAFO  
ABHORR  
COMINE

Print answer here: \_\_\_\_\_

(Answers tomorrow)

Yesterday's Jumbles: YIELD GLORY TINKLE UNKOLY  
Answer: A bachelor is a man who can go fishing anytime. UNTIL HE GETS WOOKED.

## Doonesbury

by Garry Trudeau

**THE CHICK DON'T LOOK CLASSY ENOUGH, KNOW WHAT I'M SAYING?**  
**WE COULD GIVE HER A TOP HAT, SIR...**

**KIND OF A GINGER ROGERS THING—STYLISH, VIVACIOUS, BUT WITH A TOUCH OF NAUGHTINESS! I THINK THAT'S HOW YOU WANT TO POSITION YOURSELF.**

**THE PRINT ADS SHOULD MAKE PEOPLE THINK YOU'RE DIFFERENT, SPECIAL... YOU WANT THEM TO BELIEVE YOU REALLY ARE WHAT YOU SAY YOU ARE—A LEGITIMATE ESCORT SERVICE!**

**MAYBE WITH A PUSH-UP BRA...**  
**WHATEVER YOU AGREE WITH MY CONCEPT?**

3-5

## Shoe

by Jeff MacNelly

SINGLE SLICES by Peter Kohlsaat

**I've finally come to terms with getting old.**  
**Too late, pops... You're past old.**

3-5

**WHAT'S THE GUARD HOUSE FOR? IS THIS SOME SORT OF PRISON?**  
**OF COURSE NOT.**

3-5

**IT'S A MAXIMUM SECURITY RESORT COMMUNITY.**

**The Pelican POOD**

3-5

## Calvin and Hobbes

by Bill Watterson

**WHERE ARE THOSE DARN BOOTS?**

3-5

## Mother Goose and Grimm

by Mike Peters

**DOES GRIMMY HAVE A NAME FOR HIS NEW CHEW TOG?**  
**UH. HUH.**

**ATTILA.**

3-5

## Walt Kelly's Pogo

by Doyle & Sternecky

**GOODBYE, OWL!**  
**DON'T FEEL POGO—EVERY PRESIDENTIAL CANDIDATE HAS SECON THOUGHTS...**

**WOOSH! GOIN' ROUND AND ROUND WITH OWL IN POLITICAL CIRCLES IS GOT ME PLUM WORKIN' OUT—ON BEST PLACE I'M RUNNIN' IS TO RES!!**

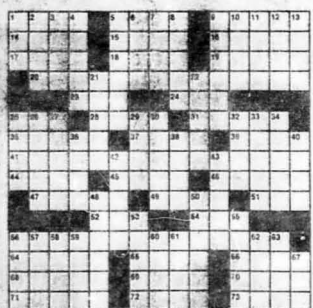
**I MEAN, WILL THEY NEVER LEAVE ME ALONE?**

**A Historical QUESTION, I TRUST.**  
**PT. YOU AN' TRUST IS A COUNTER-FICTION IN TERMS.**

3-5

## Today's Puzzle

- ACROSS**
- Money for the catfish
  - Machete
  - Rouge
  - Joseph's black hairy color
  - Navaho
  - Kojak
  - Get up
  - Carry
  - Laugh heartily
  - Appellation
  - Declared enemy from "Mean Me in St. Louis"
  - Fun time
  - 24 Fruit drink
  - 25 Certain actor
  - 26 Sportswear
  - 31 Harrow
  - 36 Flute
  - 37 —
  - 38 —
- DOWN**
- Croaky song
  - "We're not
  - Experts
  - 46 Noblemen
  - 47 Toll
  - 48 Social songbird
  - 51 Shoe width
  - 52 Unkind
  - 54 Ford
  - 55 Gertrude
  - Lawrence song from "Words and Music"
  - 64 Eschew formal
  - 65 Alaskan city
  - 66 Salem's st.
  - 22 Ape
  - 23 —
  - 24 —
  - 25 —
  - 26 —
  - 27 —
  - 28 —
  - 29 —
  - 30 —
  - 32 US workplace watchdog
  - 33 Cuba —
  - 34 Shoulder strap
  - 35 — majesty
  - 36 Close by
  - 43 Gaelic
  - 45 Hi
  - 46 Lamp occupant
  - 48 Slanders
  - 50 Anesthetics
  - 53 Kind of eclipse
  - 55 Certain craft
  - 56 Darn
  - 57 Wing-shaped
  - 58 Bird of peace
  - 59 Gibraltar
  - 60 Been cured
  - 61 Gov. agent
  - 62 Yet
  - 63 Big Foot's
  - 67 Set



Today's puzzle answers are on page 15

**LA ROMA'S**

1-32 oz. Pepsi with delivery of small pizza  
2-32 oz. Pepsis with Large or X-Large

Not Good With Any Other Coupons or Specials

**529-1344**

**\$1.00 OFF**  
Medium, Large or X-Large Pizza. Limit one per pizza

**CREDIT UNION ATTENTION MEMBERS:**

**54th Annual Meeting**  
Tuesday, March 24  
SIU Student Center Ballrooms C & D

**This is YOUR Credit Union Make Plans to Attend Now!!**

**LUNCHEON 11:30 a.m.**

- RSVP - Advance Tickets Required and are available at SIU Credit Union and various on-campus locations for \$5.00 per person.\*

**BUSINESS MEETING 12:15 p.m.**

**DOOR PRIZES**

*We're Working For*  
**YOU**

\*CALL 457-3595 for additional ticket information.

# GAME, from Page 16

margin of 29 points. For all games played, the Bears rank No. 2 nationally in scoring margin with a 26 point scoring margin.

SMSU assistant coach Marla Douglass-Odom said SMSU always has had a tough time with Southern.

"SIUC has been our No. 1 concern this year," she said. "We played a great game against Southern earlier, and we had a great crowd. I think we have fully prepared to take on Southern. It's going to be a dog fight, and anything could happen. The game here was an exception."

Last week, the Bears tied the nation in field goal percentage, shooting 52.3 percent from the field. They also were No. 4 in scoring defense allowing 56.3 points a game.

In Gateway stats, the Bears rank first in seven of twelve categories

including scoring, assists, steals and rebound margin.

Individually SMSU has four Gateway leaders. Tonya Baucum is shooting 64.6 percent from the field. Melody Howard is making 44.8 percent of her treys.

Charity Shira is shooting 88.5 percent from the line, and Amy Nelson is averaging six assists a game.

A balanced attack has been SIUC's strength all season. Four players average double figures in points.

Junior point guard Anita Scott, who is shooting 49.8 percent from the field, is averaging 13.6 points a game. She also leads SIUC in assists, steals and minutes played.

Junior center Kelly Firth, the Gateway's No. 2 rebounder, is averaging 12.4 points a game and 9.6 rebounds a game. She is the Gateway's No. 5 shooter making

55.3 percent of her shots.

Junior forward Angie Rougeau, who is shooting 75.1 percent from the line, and senior Karrie Redeker, the nation's No. 10 3-point shooter making 44.1 percent of her treys, are averaging 11.6 points a game.

Freshman Rocky Ransom and junior Tiffany Bolden have taken turns rounding out the SIUC lineup this season as power forward.

**no cover P.K.'s no cover**

**Thursday**  
75¢ 12 oz. Drafts/Speedrails  
**Bill Harper**

**Friday and Saturday**  
**Rhythm League**

529-1124 Open at 8 a.m. Daily 308 S. Ill.

**THE CHALET**  
1/2 Mile N. of Hardees, Murphysboro

**NO COVER!!!**  
**SEE OUR BEAUTIFUL DANCING GIRLS**  
**TUES. WED., THURS. FRI. & SAT.**  
**8:00 p.m. TO 2:00 a.m.**  
*"Some of Southern Illinois' Finest Dancers"*  
684-3038

Fast Delivery **PIZZA** Delivering The Perfect Pizza

**PAPA JOHN'S**

**WE DELIVER PERFECTION**

**549-1111**

Located next to the corner gas station on Wall and Grand Ave.

**HOURS**  
11 a.m. - 1 a.m. 7 days a week

**ONE LARGE ONE TOPPING PIZZA**

**\$4.99** + tax

expire 03/09/92

**TIRE PRICES THAT CAN'T BE BEAT!**

SEE PRICE MATCH PLEDGE BELOW

**THROUGH SATURDAY ONLY!**

**40,000 MILE\***

**ALL SEASON STEEL BELTED RADIAL**

**SALE ANY SIZE\*\* \$39**

#10000 WHITEWALL

Priced so low, we can't name the manufacturer!

\*\*AVAILABLE IN THESE 10 POPULAR SIZES:

P155/80R13	P165/75R14	P205/75R15
P165/80R13	P195/75R14	P215/75R15
P185/80R13	P205/75R14	P235/75R15

\*Limit 5 per vehicle. No carry-outs. No dealers.

**150% PRICE GUARANTEE**

WE'RE SO CONFIDENT OUR PRICE IS RIGHT THAT IF YOU FIND ANY OF THESE BRAND NAME OR COMPARABLE QUALITY PRIVATE LABEL TIRES ADVERTISED FOR LESS AT ANY RETAILER WITHIN 30 DAYS OF YOUR PURCHASE, WE'LL GIVE YOU 150% OF THE DIFFERENCE! See actual dealer.

**ALL MICHELIN ON SALE!**

XA4	
All season	SALE
155/80R13	47.38
165/80R13	50.14
175/80R13	52.25
185/80R13	54.36
195/80R13	56.47
205/80R13	58.58
215/80R13	60.69
225/80R13	62.80
235/80R13	64.91

XZX	
All season	SALE
155/80R13	43.52
165/80R13	46.46
175/80R13	49.40
185/80R13	52.34
195/80R13	55.28
205/80R13	58.22
215/80R13	61.16
225/80R13	64.10
235/80R13	67.04

**30,000 MILE\***

**ECONOMY RADIAL!**

Steel belted radial.

Whitewall	Price Ea.
P165/80R13	33.25
P195/75R14	38.95
P205/75R14	39.90
P215/75R15	45.60
P225/75R15	46.58

#40000 P155/80R13

**55,000 MILE\***

**ALL SEASON STEEL BELTED WHITEWALL**

ANY 13" SUPER BUY

**\$37 \$47**

#53000

1st Details in store

P165/80R13 P175/80R13 P185/80R13 P195/80R13 P205/80R13 P215/80R13 P225/80R13 P235/80R13

**65,000 MILE\***

**ROAD TAKER 700**

SR-speed rated radial.

**\$34**

#67000 P155/80R13

**FEDERAL**

**25,000 MILE\***

TR-speed rated radial.

**\$23**

#05000 155/75R12

**ROAD TAKER 400**

**55,000 MILE\***

All season

**\$25**

#30000 155/75R12

**ROAD TAKER 300**

**50,000 MILE\***

SR-speed rated radial.

**\$38**

#06000 P155/80R13

**STEEL \$300**

**50,000 MILE\***

All season

**\$42**

#07000 P155/80R13

**ROAD TAKER GTH**

**55,000 MILE\***

SR-speed rated radial.

**\$61**

#08000 P165/80R13

**COMANCHE**

**30,000 MILE\***

Steel belted

**\$63**

#09000 P155/80R13

**MORE POWER, MORE WARRANTY AT A PRICE THAT CAN'T BE BEAT!**

**48" SUPER DUTY**

**5" MAIL-IN REBATE**

**44.99**

**QUICK START**

**INSTALLED QUICKSTART 2000 BATTERY. #11851**

Power you can rely on! Warranted 'til the year 2000! 95-MONTH\* LIMITED WARRANTY

**MORE BATTERY VALUES!**

<b>29.99</b> AFTER \$5 MAIL-IN REBATE	<b>INSTALLED AUTO EXPRESS 65 PLUS BATTERY.</b>
<b>59.99</b> AFTER \$5 MAIL-IN REBATE	<b>INSTALLED QUICKSTART 850/95-MONTH* BATTERY.</b>
<b>17.99</b> AFTER \$2 MAIL-IN REBATE	<b>LI-I RIDING MOWER/ GARDEN TRACTOR BATTERY.</b>

**BUY 4 SHOCKS AND GET \$10 OFF INSTALLATION!**

**EXTRA VALUE 11.99**

**HEAVY DUTY GAS SHOCK.**

For many U.S. imports. #20801

**SALE 18.99**

**MONROE GAS MATIC SHOCK.**

Many U.S. imports. #20201

**SALE 25.99**

**MONROE GAS MEDIUM SHOCK.**

Many vans, pickups, 4x4s. #20901

**SAVE \$25 ON INSTALLED STRUTS!**

**SALE 2 FOR 79**

**MAIL-IN REBATE \$10**

**FINAL PRICE 21.99**

**EXTRA VALUE 21.99**

**INSTALLED MACPHERSON GAS STRUT CANTIDORS.**

Many imports. #20164R

\*Gas struts, many GM, Chrysler and imports. FINAL PRICE: 2 for 99.99

\*Gas struts, many Ford, Mercury, #20314R. FINAL PRICE: 2 for 108.99

\*47P7 BALL, REAR & INSTALLATION CREDIT. \*For valid through 3/31/92

**IT'S RIGHT, ON TIME, OR THE LABOR'S FREE!**

**AutoExpress COUPON**

**U.S. & IMPORT BRAKES 54.99\***

Many vehicles. With this coupon. #001A

\*Repack bearings w/out brake\*\*

\*Replace pads/shoes

\*Resurface rotors/drums

\*Inspect hydraulics

Vehicles with semi-metallic pads, extra.

\*Non-Ohio vehicle only

COUPON VALID THROUGH 3/31/92

**FREE BRAKE CHECK!**

**AutoExpress COUPON**

**U.S. & IMPORT 20 MINUTE 16.99**

**EXpress LUBE**

OR NEXT ONE FREE!

Many vehicles. With this coupon.

\*Time guarantee valid if other service is purchased.

\*Add up to 5 qts. Auto Express oil

\*Install oil filter

\*Top off all fluids

\*Lube all existing fittings

COUPON VALID THROUGH 3/31/92

NO ONE HAS A BETTER RATE OF GRADE OF MOTOR OIL THAN AUTO EXPRESS

**AutoExpress**

Montgomery Ward

Sale prices good through Saturday, March 7, 1992.

**FREE!**

Save Lube Kit by mail with 12-oz. purchase! A 19.99 value!

**99¢**

ALL CLIMATE 10W30 OR 10W40 MOTOR OIL

#1350-53 Limit 12 qts

\*LIMITED WARRANTY. Details in store. All tire brands and sizes shown are available through all Auto Express stores. Some by special order only. We reserve the right to limit sales to normal retail quantities. No dealers. State or local taxes or surcharges for environmental protection will be an added charge where applicable.

\*Limited warranty details in store. A tire is replaced on the purchase of each new tire. First tire replaced on the purchase of each new tire. Please see us for more details. \*Cracking repair for southern climate states noted at 27¢, all others at 67¢.

\*SPECIAL OFFER. Prices shown are for the purchase of 4 shocks. If you buy a lower advertised price 4 shock set including Auto Express, within 30 days of purchase, we'll refund the difference. \*SPECIAL OFFER. Prices shown are for the purchase of 4 shocks. If you buy a lower advertised price 4 shock set including Auto Express, within 30 days of purchase, we'll refund the difference. \*SPECIAL OFFER. Prices shown are for the purchase of 4 shocks. If you buy a lower advertised price 4 shock set including Auto Express, within 30 days of purchase, we'll refund the difference.



# SOFTBALL, from Page 16

weekend. Gateway foe Western Illinois, which is picked to finish third, Bowling Green State and Notre Dame will compete in the tournament.

Brechtelsbauer said SIUC has the hardest schedule ever in 1992, and the week-end competition will be no exception.

"Western always has a tough team," she said. "They have a strong pitching staff, and at this time of the year the pitchers are always ahead of the hitters because they have a better opportunity to practice indoors. Bowling Green is a strong team, and Notre Dame is a new program, but they've already recruited some good players."

"We have good hitting and a good pitching staff. If we can maintain the balance the squad had last year, we will again be a strong contender."

The 1991 SIUC squad broke 25 records last season.

Top returnees from that record-breaking season include junior pitcher Angie Mick, sophomore catcher Laurie Wilson, senior shortstop Cheryl Venorsky and junior right fielder Colleen Holloway.

The four were picked in the preseason poll to make the all-conference squad.

In 1991, Holloway, third team All-American, was ranked 16th nationally with 39 RBIs and 28th in batting (.397). An All-Gateway and All-Region pick, she set single-season school records in batting, slugging, runs and RBIs.

The speedy Holloway was SIUC's lead-off hitter in the fall, and she again will fill the spot at least for this weekend. Brechtelsbauer said she will decide on the best lineup as the season progresses.

Venorsky, the 1991 GTE All-American, was second for SIUC in batting, hits, RBIs and slugging last season. She also was selected to the All-Midwest Region First Team. Wilson, the 1991 Gateway Rookie of the Year, batted .285 with 39 hits, 21 runs and 25 RBIs last season.

Mick posted a 19-5 record last season and was tops in the Gateway and No. 32 nationally with a 0.80 ERA.

Senior pitcher Dede Darnell had a 9-1 record last season including five shutouts.

The Saluki pitchers also will get help from freshman Shelly Lane, who finished the fall season 4-0. Freshman Tamara Sundstrom will back up Wilson in her catching duties.

On first base, freshman Marlo Pecoraro has stepped in to replace graduate Angie LeMonnier. Senior Andrea Rudanovich will be starting her second season at second base, and sophomore Maura Hasenstab will replace graduate Mary Jo Firnbach at third base.

Senior three-year starter Kim Johannsen will play center field, and replacing graduate Shannon Taylor in left field is junior Karrie Irvin, a transfer from Illinois Central College.

Western returns 14 players from a 30-18 1991 team, headed by seniors outfielder Lori Tubbs, third sacker Lisa Hernandez and pitcher Veronica Wilson. WIU coach Kathy Veroni experienced players will be its strength.

"We have a lot of upperclassmen returning, including six players who have been all-conference," Veroni said.

"SIUC is coming off a great season, and many outstanding players are returning. You can't discount either Bowling Green or Notre Dame. They both have strong programs, and it should be an exciting tournament."

The Salukis play Gateway foe Western at noon Saturday, then play Notre Dame at 2 p.m. Sunday. SIUC plays Bowling Green at 11 a.m. with the championship game slated for 1 p.m.

## SPRING BREAK '92

Daytona is history!  
South Padre, Texas, Tried & Died  
Panama City Beach  
The Hottest, Newest,  
#1 Spring Break Destination  
Over 400,000 students will  
spend spring break 1992 in...  
Panama City Beach, Florida.  
Why?  
For the Ultimate  
Spring Break Party!  
There is no other option - this  
Spring break, stay on the  
Miracle Mile including  
discount at the two largest  
super clubs in the world -  
Spinaker's and Club La Vela.  
8 days/7 nights including  
discounts and much more!  
Package Price:  
Deluxe Hotels \$155.  
Condos \$179.  
Call 1-900-558-3002

# NETTERS, from Page 16

Merchant, and Rodney Steven.

Classes said last season the team beat Tulsa 6-3, and he is looking forward to playing the Hurricane again.

"Tulsa is good but beatable," he said.

Jay Merchant said with the loss of key veterans the team is using its raw talent and togetherness as an edge.

"We're all pretty close," Merchant said. "Four of us used to room together, and we still go out together."

He said the team needs to build on its closeness to better its record.

"Hopefully, we still can do some damage this season," Merchant said.

While still focusing on this season, he said the team is looking forward to next season, when the team will have more experience.

"Nobody's graduating, so we'll be tough to beat next year," Merchant said.

The SIUC-Tulsa battle will be at 9 a.m. Sunday.



**We Frame Anything**  
**Carters**  
*Custom Framing and Art Gallery*  
Corner of Main & Oakland  
Carbondale  
Open 9 - 5 Mon. - Sat.

## PRINCIPLES of SOUND RETIREMENT INVESTING



## WHY YOU SHOULD START PLANNING FOR RETIREMENT WITH YOUR EYES CLOSED.

For retirement to be the time of your life, you have to dream a little—about the things you've always wanted to do: travel, explore, start a business. Just imagine...

With a dream and a plan, you can make it happen. Your pension and Social Security should provide a good basic retirement income, but what about all those extras that make your dreams possible? You'll probably need some additional savings.

**THE DREAM IS YOUR OWN. WE CAN HELP YOU WITH THE PLAN.**

TIAA-CREF Supplemental Retirement Annuities (SRAs), tax-deferred annuities for people like you in education and research, are a good way to save for retirement and save on taxes now. SRAs are easy—you make contributions through your institution before your taxes are calculated, so you pay less tax now.

You pay no tax on your SRA contributions and earnings until you receive them as income. And saving regularly means your contributions and their earnings

can add up quickly.



What else makes SRAs so special? A broad range of allocation choices, from the safety of TIAA to the investment accounts of CREF's variable annuity;

no sales charges; a variety of ways to receive income, including annuities, payments over a fixed period, or cash. You may also be able to borrow against your SRA accumulation before you retire.

All this, plus the top investment management that has helped make TIAA-CREF the largest retirement system in the country.

So start dreaming and planning for the time of your life. Because the sooner you start your SRA, the greater your savings and your retirement will be.

### START PLANNING FOR THE TIME OF YOUR LIFE, TODAY.

For your free TIAA-CREF Supplemental Retirement Annuity Kit, send this coupon to: TIAA-CREF, Dept. QC, 730 Third Avenue, New York, NY 10017. Or call 1 800 842-2733, Ext. 8016.

Name (Please print) \_\_\_\_\_  
Address \_\_\_\_\_  
City \_\_\_\_\_ State \_\_\_\_\_ Zip Code \_\_\_\_\_  
Institution (Full name) \_\_\_\_\_  
Title \_\_\_\_\_ Daytime Phone ( ) \_\_\_\_\_  
TIAA-CREF Participant ☐ Yes ☐ No If yes, Social Security # \_\_\_\_\_



**Ensuring the future for those who shape it.™**

\*Depending upon your institution's plan and the state you live in. CREF annuities are distributed by TIAA-CREF Individual & Institutional Services, Inc. For more complete information, including charges and expenses, call 1 800 842-2733, Ext. 5609 for a prospectus. Read the prospectus carefully before you invest or send money.

## Puzzle Answers

ALMS SALK BATON  
COAT THED AROSE  
TOTE ROAD FITTLE  
THE POLYTEXT DOOR  
POL ADE  
HAM OLLA DOORS  
URALS AGRI SITE  
LOVETHYNEIGHBOR  
ACES ASEA EARLS  
KNEEL WREN FEE  
ILL THE  
MADABOUTTHEBOY  
ELOPE HOME OREG  
HAVEL AFFAIR ANTE  
DRESS RING TOIT