

Southern Illinois University Carbondale

OpenSIUC

---

February 2010

Daily Egyptian 2010

---

2-4-2010

## The Daily Egyptian, February 04, 2010

Daily Egyptian Staff

Follow this and additional works at: [https://opensiuc.lib.siu.edu/de\\_February2010](https://opensiuc.lib.siu.edu/de_February2010)

Volume 95, Issue 92

---

This Article is brought to you for free and open access by the Daily Egyptian 2010 at OpenSIUC. It has been accepted for inclusion in February 2010 by an authorized administrator of OpenSIUC. For more information, please contact [opensiuc@lib.siu.edu](mailto:opensiuc@lib.siu.edu).

## USG officers bicker over controversy, tactics

PAGE 4

## Faculty Senate prepares for first meeting

PAGE 7

www.staDE.com

Volume 95, Issue 92, 12 pages

### Goldman: Senior class enrollment main concern

JEFF ENGELHARDT  
Daily Egyptian

With the release of enrollment numbers a week away and the university only eight students shy of matching the spring 2009 mark, Chancellor Sam Goldman said he was still confident.

As the week went on, however, Goldman said the numbers started telling a different story.

Students dropped out before they had to pay full tuition, a late surge Goldman expected never happened and the university enrollment dropped another 1.2 percent, coming up 231 students short of spring 2009, Goldman said.

Official numbers provided by Goldman Wednesday were different from the numbers that showed a 1.3 percent decrease and loss of 255 students the university released Monday.

Goldman said he should have known better than to predict an increase in enrollment for the spring semester, but the university must also not give up hope as it tries to reverse the declining enrollment.

"I have to believe. If I don't believe, who will? We've got the interventions in place to do it," Goldman said. "Will we make it? I have no idea, but Monday was a dark Monday for me because I really expected we would go up."

Goldman said it is important to remember the 10-day headcount is only a snapshot of a single day and changes can happen as the semester progresses.

The snapshot Monday showed promising numbers for three of the four classes at SIUC as the freshman, sophomore and junior classes had retention rates of more than 90 percent.

It was the senior class the raised concern among administrators.

The retention rate for seniors came in at 70 percent and Goldman and Dean of Students Peter Gitau said the university needs to do more to keep those students.

Services such as the Single Parent Program, Saluki Cares and Veteran Services have been implemented to offer support for struggling students, but Gitau said he still receives calls most days about financial trouble.

Gitau said many senior students have exhausted financial aid and are trying to work multiple jobs even though their classes are more intensive. Many students come looking for assistance to buy textbooks, but he said the university can only help so many before it is strapped.

Please see ENROLLMENT | 2

# Grocery stores to petition for end to liquor license cap

NICK JOHNSON  
Daily Egyptian

Local grocery store representatives said customers are ready to buy liquor from their outlets — they just need to persuade the City Council to let them sell it.

Carbondale retailers Schmucks, Kroger, Neighborhood Co-op Grocery and Arnold's Market plan to collectively petition the council to allow grocery stores to sell beer and wine—the two items most frequently requested by their customers, Schmucks General Manager Tom Eakin said.

The City Council must first vote to amend or remove the cap on the city's number of Class C liquor licenses — licenses for the sale of packaged liquor to be consumed off the vendor's premises — before grocery stores can sell beer or wine.

The city first adopted a cap on Class C licenses in 1990, after then City Manager Steve Hoffner sent a memorandum to the mayor and City Council entitled "Liquor Related Issues," a Freedom of Information Act request showed.

"Limiting the number of licenses has been suggested and urged by

some current liquor license holders and by some citizens," Hoffner wrote in the memorandum.

John Mills, current member of the city's Liquor Advisory Board and city councilman from 1987-95, said another reason the cap was established was an effort by the university and city in the early 1990s to control local Halloween parties.

"It started out with capping the bars, (and) that presented some other problems," Mills said. "That's what generated the whole thing, was Halloween. It wasn't trying to hold (the licenses) to certain people."

The City Council votes on ordinances that raise or lower caps on liquor licenses and the Liquor Control Commission, which consists of the mayor and all City Council members, votes on whether to approve requests for licenses.

Section 2-4-9 of the Carbondale Revised Code prohibits sale of liquor in any grocery store unless the store builds a partition and "each area has a separate entrance and separate checkout facility."

Please see LIQUOR | 2

**9/18/1990** The city of Carbondale establishes a cap on Class C liquor licenses, setting it at eight in accordance with the number of applicable stores open for business at the time.

**5/20/1997** An attorney representing six Class C liquor licensees files a request that the cap be reduced by two, from eight to six. The request was denied by the City Council.



**7/6/2004** Hundley House, a package liquor store, doesn't renew its license. The City Council votes to decrease the allowed number of Class C licenses from eight to seven.



**1/19/2010** The City Council votes to raise the cap on Class C liquor licenses back to eight to grant Zach and Tiffany Short a license for their Blue Fish Liquor and Cigars store near Reed Station Road.



Source: City of Carbondale public records  
Pablo Tobon | DAILY EGYPTIAN

**Michael Harris & COUNTRY FINANCIAL**  
 (618) 457-5373  
 michael.harris@countryfinancial.com

WILL THE closing of Gap and New York and Company in University Mall, will you ever go shopping there?

Yes, I will like the small selection of stores and it is convenient.	10%	25%	35%	40%	55%	70%	80%	95%	100%
No, with the closing of those two stores, there are barely any stores left.	10%	25%	35%	40%	55%	70%	80%	95%	100%
I never went to University Mall anyway.	10%	25%	35%	40%	55%	70%	80%	95%	100%

Do you trust that an assistant to the chancellor position is necessary despite the hiring freeze?

A. Yes, if having an assistant makes the chancellor more successful than it is a necessary position.  
 B. No, the university shouldn't be hiring freeze for a reason, and Christy...  
 C. Well, who is Rita Cheng?

Call or e-mail us today for a free quote!

**ENROLLMENT**

CONTINUED FROM 1

"The hardest thing is when I don't have a solution and direct a student to another office," Gitsa said. "We need to take a hard look at how we operate. We can't let the student feel the negative impact the university is feeling from the state."

Goldman said the university has also started discussions about a textbook rental program to help, and hopes to cap student fee increases at 3.5 percent or less. The university will also continue talking with state lawmakers to make sure students get the aid they need.

"We put out over \$200 million a year in financial aid, but that's not enough," Goldman said. "All universities have to face uncertainty about MAP grants and state funding and work through it. Because I have to admit, several have grown and done well and we didn't."

While the decline in spring enrollment was a disappointment for Goldman in his last semester, he said he has not given up hope for the future and hopes the next chancellor, Rita Cheng, focuses on developing new programs.

New programs, specifically in the medical field, could provide a bright

future for the university, Goldman said. According to university records, the new nursing program at SIU Edwardsville grew from 23 students to 84 in a one-year span.

"Tough decisions will have to be made, but this is a very good university," Goldman said. "Students still tell me they love it here and there is still that feeling — I see it, and I would like our people to feel that, even though we have our problems."

Jeff Engelhart can be reached at [jeng@siu.edu](mailto:jeng@siu.edu) or 536-3311 ext. 254.

**LIQUOR**

CONTINUED FROM 1

Kroger spokesman Tom McGurk said allowing the company's Carbondale location to sell beer and wine would be a greater convenience to shoppers.

"For many people wine is part of the meal now, and they really do like to pick out the wine and food together," he said.

It would also generate more tax revenue for the city, McGurk said.

Carbondale might have a reputation as a "sin city," but it's harder to buy alcohol in Carbondale than just about any other town in southern Illinois, Eakin said.

The staff of the Neighborhood Co-op Grocery store has decided to make its presence known to the City Council when discussions of liquor licenses are on the agenda, according to Pale, the store's customer service manager.

Carbondale City Councilman

Chris Wissmann favors a case-by-case basis when considering applications for liquor licenses.

There's more than enough liquor stores to support Carbondale's population, and adding additional stores would drive the cost down, Wissmann said.

"You just don't need booze to get so cheap that you have people getting completely mashed on \$1," he said.

Councilman Lance Jack said he doesn't support caps in any part of the local economy and supports discussion of the Class C license cap on the council.

"We don't have caps on video stores or supermarkets. We don't have caps on pizza places. I understand that alcohol is a regulated product but I think it would serve the community, create competition and make those that do have licenses more accountable," Jack said.

"We need a lot more people downtown — mainly students — and we need

something to attract them down there," Mills said.

Mills said SIUC has dealt with the reputation of being a "party school" for its entire existence and it shouldn't be a reason for the city to put a cap on liquor licenses.

"That just amazes me we still have to deal with that these days," Mills said. "Every school thinks (it's) a party school."

Granting more liquor licenses and establishing more places for students to go could actually help the current enrollment crisis, Mills said.

"If anything, you can make an argument (that) if there's more of the nightlife, if there's ... more things for people to do, whether it's here or somewhere else — students have to have someplace to go for a social life," he said.

Nick Johnson can be reached at [nickj39@siu.edu](mailto:nickj39@siu.edu) or 536-3311 ext. 263.

**KERASOTES**  
 LAMINATE YOUR FRIGIDITY  
 STAINLESS STEEL FINISH  
 STAINLESS STEEL FINISH

**GARBONDALE SHOW PLACE**  
 4.50 7.40 10.30  
 3D AVATAR PG13  
 3.25 6.50 10.15  
 TOOTH FAIRY  
 4.30 7.10 9.40  
 EXTRAORDINARY MEASURES PG  
 3.90 7.20 11.00  
 TWIST SHOW WED. AND THURS.  
 MET CARMEN ECKHART WED. 6:30 PM  
 NCM Private Home Comparison (LIVE) THURS. 7pm

**UNIVERSITY PLACE @ CARBONDALE**  
 6:30 7:00 7:30 8:00 8:30 9:00 9:30 10:00 10:30 11:00

**BLINDSIDE PG13**  
 7:00 10:00  
**PRECIOUS R**  
 3:40 6:40 9:20  
**LEONOR R**  
 5:10 7:50 10:15  
**THE LOVELY BONES PG13**  
 3:50 7:10 10:10  
**IT'S COMPLICATED PG13**  
 4:00 9:40  
**UP IN THE AIR PG**  
 6:50  
**THE SPY NEXT DOOR PG**  
 4:10  
**YOUNG VICTORIA PG**  
 4:20 7:20 9:50

Buy tickets online at [FANMANAGER.COM](http://FANMANAGER.COM)

**SPC FILMS PRESENTS**

WHERE THE WILD THINGS ARE

Thurs. Feb. 04 - 7:00PM  
 Fri. Feb. 05 - 7:00 & 9:30 PM  
 Sat. Feb. 06 - 7:00 & 9:30 PM

Student Center Auditorium

\$2 SIUC Student  
 \$3 General Public

Rated: PG  
 Running Time: 101 minutes  
 Starring: Catherine Keener, James Gandolfini, Forest Whitaker

618.536.3393 www.spcuniversity.com

**The Weather Channel® 5 day weather forecast for Carbondale, Ill.**

Thursday	Friday	Saturday	Sunday	Monday
40° 33°	38° 30°	36° 22°	34° 22°	35° 24°
40% chance of precipitation	70% chance of precipitation	30% chance of precipitation	10% chance of precipitation	10% chance of precipitation

Daily Egyptian

**HELP WANTED**  
**Circulation Driver**

- Enrolled at least 6 credit hours each semester
- Available to work during breaks
- Motivated & hard working
- Good driving record is a MUST!
- Fresh/Soph preferred but not NECESSARY!

The Daily Egyptian is an Equal Opportunity Employer. Pick up your application at the Daily Egyptian Reception Desk, Communication Bldg., Rm. 1259, Monday-Friday, 9am-4pm.

CALL 549-5326

ONE LARGE, ONE-TOPPING  
 THREE 20 OZ. SODAS

\$12.98

**THE BIG ONE**

222 W. Freeman  
 Campus Shopping Center  
 www.Quatros.com

Monday - Thursday 11am - 12am  
 Friday 11am - 1am  
 Saturday 11am - 1am  
 Sunday 12:00 - 7pm

**About Us**

The DAILY EGYPTIAN is published by the students of Southern Illinois University Carbondale 50 weeks per year, with an average daily circulation of 20,000. Fall and spring semester editions run Monday through Friday. Summer editions run Tuesday through Thursday. All intercession editions run on Wednesdays. Spring break and Thanksgiving editions are distributed on Mondays of the pertaining weeks. Free copies are distributed in the Carbondale, Murphysboro and Carterville communities. The DAILY EGYPTIAN online publication can be found at [www.siuDE.com](http://www.siuDE.com).

**Mission Statement**

The DAILY EGYPTIAN, the student-run newspaper of Southern Illinois University Carbondale, is committed to being a trusted source of news, information, commentary and public discourse, while helping readers understand the issues affecting their lives.

**Copyright Information**

© 2010 DAILY EGYPTIAN. All rights reserved. All content is property of the DAILY EGYPTIAN and may not be reproduced or transmitted without consent. The DAILY EGYPTIAN is a member of the Illinois College Press Association, Associated Collegiate Press and College Media Advisers Inc.

**Publishing Information**

The DAILY EGYPTIAN is published by the students of Southern Illinois University Carbondale. Offices are in the Communications Building, Room 1259, at Southern Illinois University Carbondale, Carbondale, IL 62901. Bill Freitvogel, fiscal officer.

**Reaching Us**

Phone: (618) 536-3311  
 Fax: (618) 453-3248  
 E-mail: [editor@siuDE.com](mailto:editor@siuDE.com)

Editor-In-Chief: Diana Soliwon ext. 252  
 Managing Editor: Anihom Souffle ext. 253  
 Campus Editor: Jeff Engelhardt ext. 254  
 Sports Editor: Stile Smith ext. 256  
 Features Editor: Derek Robbins ext. 273  
 Voices Editor: Jennifer Fitcher ext. 281  
 Photo Editors: Julia Rendleman & Edyta Blaszczyk ext. 270  
 Design Chief: Lindsey Smith ext. 248  
 City Desk: ext. 274  
 Web Desk: ext. 257  
 Advertising Manager: Carrie Galle ext. 230  
 Business Office: Brandi Harris ext. 223  
 Ad Production Manager: Mandy Daly ext. 244  
 Business & Ad Director: Jerry Bush ext. 229  
 Faculty Managing Editor: Eric Fidler ext. 247  
 Printshop Superintendent: Blake Mulholland ext. 241

# Accident survivor returns to SIU, making strides

**DEREK ROBBINS**  
Daily Egyptian

Crystal Fuehne has no memory of June and July 2009 – during that time she was in a coma at St. Louis University Hospital.

Fuehne was involved in a car accident May 24 in her hometown while acting as a designated driver for a group of friends. The accident led to the death of four people, three of whom were riding with Fuehne, who was hospitalized.

This semester Fuehne, a senior from New Baden, studying athletic training, has returned to SIU and is attending an athletic training class once a week.

"I'm happy to be able to attend class again," Fuehne said. "It feels good to be back at SIU."

The journey back to college life has been a long one, she said. After her accident, she was in a coma for two months.

"They have pictures of me from that period," Fuehne said. "I was wide awake, but I don't remember it at all."

While Fuehne has no memory of the two months after the accident, she also has no memory of what happened the month before the accident. She said what she knows about that time period is only what other people have told her.

After coming out of the coma, Fuehne had no right field of vision, was unable to move the muscles in the lower portion of her body and was unable to speak.

"The doctors did not think Fuehne would make it, she said.

"The doctors said I was a miracle," she said. "I've had roughly four brain surgeries since the accident. The doctors said they haven't seen anything like it, so they just tried different things. Surprisingly, they worked. They didn't think I would ever talk again."

Through use of physical therapy, occupational therapy and speech training, Fuehne has improved a lot since the accident, she said.

"I'm able to walk around the house now," she said, adding that she only uses her wheelchair when outside her home.



JESS VERMEULEN | DAILY EGYPTIAN

Crystal Fuehne, a senior from New Baden studying athletic training, is assisted by Eric Manzano, left, and Terry Kuhnert during a session of physical therapy Tuesday at the Carbondale Center for Comprehensive Services. Fuehne was involved in a two-car accident May 24 and has been working with physical therapists Manzano and Kuhnert since August.

Fuehne had a tracheotomy in June to help relieve problems with her breathing, but it was removed in July. Fuehne said she was able to hold her first long conversation in December.

Fuehne still has no right field of vision. She uses a computer that helps her with eye exercises and allows her to see objects that would not normally be in her field of vision.

Fuehne's mother, Donna Fuehne, said her daughter's recovery has been amazing.

"She has taught me so much: It makes me look at life differently," Donna Fuehne said. "She makes goals for every week and she always

shows signs of improvement. It really keeps her going, I think."

Donna Fuehne said she returned to work at Scott Air Force Base Tuesday for the first time since the accident.

"What we have at work is donated leave, so the people in my office donated their leave to me," Donna Fuehne said. "I am so lucky to have been able to spend time with my daughter. If I would have had to be at work every day, I wouldn't have been able to focus and do a good job. People are amazing and we're very lucky, to have been supported like this."

SIU volleyball coach Brenda

Winkler worked with Crystal Fuehne in the spring 2009 semester, as Fuehne was the volleyball team's athletic trainer. Winkler said Fuehne's heart was an inspiration to her.

"It just speaks to the kind of person Crystal is that she was able to improve as much as she has," Winkler said. "Every time I would see her, she would have made improvements and it just made my heart feel so good."

Crystal Fuehne's improvement became apparent to Winkler during a visit in December.

"Before that, conversation with her was kind of brief," Winkler said. "She would ask me things like

how the team was doing. Then I saw some of her wit come back. We have the same personality. We like to joke a lot. It was amazing to see her back to that point."

Crystal Fuehne now attends physical therapy in Highland. A Web site has been established at <http://crystalsjourney.shutterstock.com> by her family, and allows Crystal's progress to be tracked. The Web site has had 250,000 hits since it launched.

Derek Robbins can be reached at [drobbs@siu.edu](mailto:drobbs@siu.edu) or 536-3311 ext. 272.

SPC Special Events Present

## "Build A Bear"

Show them you care  
Build them a Bear!

**Free to all Students!**  
Must bring SIUC Student ID to make a bear

SIUC Student Center  
Roman Room  
February 10, 2010  
11:00 am - until supplies last

For more information contact SPC at 536-3393 or visit [www.spc4fun.com](http://www.spc4fun.com)

CASUAL GREAT DRESS MUSIC  
RELEVANT BIBLE TEACHING  
EXCEPTIONAL COFFEE

**HUNDREDS OF STUDENTS**  
OF (WITHIN WALKING DISTANCE FROM CAMPUS)

**VINE COMMUNITY CHURCH**

**ARE INVITED**  
WEEKEND SERVICES

SUNDAYS 9:00 AM, 11:00 AM, OR 5:30 PM  
[VINESIU.COM](http://VINESIU.COM) | 618.351.VINE (8463)

**JET SERVICE TO**  
**CHICAGO**  
 www.undtegypt.com  
**UNITED EXPRESS**

**Want to get things up this Spring?**  
 Get Jammin' and check out a Jamaican Vacation at  
 sit-D-E.com/travel

**The Best Rentals in Town Available Fall 2010**

<b>Three Bedroom</b> 314 N. Oakland 602 N. Oakland 617 W. Owens 1303 E. Park 302 N. Taylor 1 506 S. Taylor 1-7 509 S. Rawlings 2-6 319 S. Rawlings 2-5 1619 W. Syracuse 1710 W. Syracuse 508 S. University 504 W. Walnut 120 W. Walnut 1,2 168 Waterloo Drive 6299 Murphyboro Road	<b>Two Bedroom</b> 410 S. Ash 303 S. Deveridge 409 S. Deveridge 501 S. Deveridge A 503 S. Deveridge 506 S. Deveridge	<b>One Bedroom</b> 918 N. Bridge 209 W. Cherry 303 W. Cherry 403 W. Cherry 407 W. Cherry 606 W. Cherry 608 W. Cherry 614 W. Cherry 300 E. College 312 W. College 1-3 401 W. College 1-4 807 W. College 809 W. College 303 E. Cervine 906 S. Elizabeth 104 S. Forest 511 S. Forest 603 S. Forest 502 W. Freeman 500 S. Hays 503 S. Hays 507 S. Hays 1 509 S. Hays	<b>Five Bedroom</b> 208 W. Hospital 2 210 W. Hospital 213 W. Hospital 610 S. Logan 306 W. Monroe 413 W. Monroe 403 W. Oak 417 W. Oak 506 S. Taylor 1-7 509 S. Rawlings 1,2 519 S. Rawlings 1A 503 S. University 404 W. Walnut 815 W. Walnut 6299 Murphyboro Road	<b>Six Bedroom</b> 501 S. University 503 S. University 504 S. University 606 S. University 501 S. University 407 S. Deveridge 307 W. College 906 S. Elizabeth 501 S. University 503 S. University 504 S. University 606 S. University 403 W. Oak	<b>Seven Bedroom</b> 501 S. University 503 S. University 400 W. Oak 501 S. University 307 W. College 610 S. University 307 W. College 610 S. University
---	--	---	---	---	---

**\*Available now** Pick up full rental list Feb 1st  
 Address Subject to Change

529-1082-206 W. College Suite 11 • Carbondale

# USG stipend causes internal conflict

ERIN HOLCOMB  
Daily Egyptian

The recent wage increases for executive officers in Undergraduate Student Government has left its members pointing fingers at each other.

Senators approved an amendment at their Jan. 26 meeting that will increase all of its executive officers pay in the summer and fall.

This summer, the president will be paid \$4,000 a semester instead of \$1,800; the vice president \$3,000 instead of \$1,600; and in the fall the chief of staff \$2,200 instead of \$1,600; and the executive assistant \$1,500 instead of \$800.

The increases were originally expected to take effect this semester, but USG President Priciliano Fabian said he decided to put a limit on that increase until summer after receiving many complaints from students.

For the rest of this semester, the president will be paid \$2,800; the vice president \$2,600; the chief of staff \$2,100; and the executive assistant \$1,300, Fabian said.

Fabian said he and other executives were surprised when Dave Loftus, chairman of the Internal Affairs Committee, spoke out against the amendment at the Jan. 26 meeting.

Loftus presented the idea for a wage increase last semester and supported it, said John Kiwala, executive assistant.

"He brought up the idea to us about presenting a bill to increase the stipend wages," Kiwala said. "We were all sitting there dumbfounded because the person who told us about this (idea) and the person who proposed this to us is completely changing his mind."

Loftus said he did not propose the idea for an amendment to increase wages but was instead presented with the idea from the executive staff. The executives could argue he was in consideration of an amendment, but he never told them he supported it, he said.

"This was political spin," Loftus said. "They said they made an argument that I was in favor of an amendment that I had never seen."

Fabian said Loftus did see the proposed numbers for the wages in October because the executive officers wanted his opinion before the amendment was drafted.

It's possible that Loftus is using some sort of "poison pill" tactic, Kiwala said. The tactic is used when politicians support something that they know will bring controversy and later disagree with it in an attempt to make them look good, Kiwala said.

He said Loftus might want to try to run for an executive position

in April when student government elections take place.

"Do I have any plans to run for an Undergraduate Student Government position? No, not at this time," Loftus said. "And if I do have those intentions, then I will make those intentions clear."

Regardless of the controversy, Kiwala said he wants students to know that their fees will not increase because of the amendment. The office has offset those increases by reducing costs internally, he said.

The money for the wages comes out the student activity fees, which the senate has full control of dispensing.

Loftus said he drafted a letter that he considered submitting to the DAILY EGYPTIAN. He said he distributed one copy to a student and only discussed the letter with other students to get their reactions on whether it should be printed.

The letter reached the executive officers.

The letter states, "Priciliano Fabian increased his position's salary to \$12,000 per year and left you paying the bill."

The executives said they want students to understand that even though they proposed the amendment to the senate, they do not have the power to pass it, especially the president. Only the senate can, and did, pass the amendment.

Loftus said he chose not to submit the letter because he was passionate when he wrote it. He was also writing the letter for the concerned students, he said.

"I wrote what I felt; I wrote my concerns," he said.

Kiwala said he welcomes the student involvement, but that students should be this involved in their university all the time. Students should look past what they believe are negatives and think about the good things the student government has done on campus, he said.

Last semester, the senators and officers put in work for getting the MAP grant back and cancelled one of their events that put \$12,000 back into funding for Registered Student Organizations, Kiwala said.

"There's a lot that you have to do and I want to make sure that the students here are aware of that," Fabian said. "They do have a voice through us, we do speak for them and we want to make sure that future officers just focus on USG and don't worry about finding other jobs."

Students are encouraged to come to the next meeting at 6 p.m. Tuesday in the Student Health Center Auditorium.

Erin Holcomb can be reached at [ecerin9@stu.edu](mailto:ecerin9@stu.edu) or 536-3311 ext. 255.

**Pet of the week**  
 Brought to you by Creekside Veterinary Clinic  
 Creekside Veterinary Clinic  
 9351 Old Highway 13  
 Murphysboro, IL 62966  
 618.687.1766  
 Mon-Fri: 8am-5pm  
 Sat: 9am-12pm  
 Appointments Required  
 Free First Exam with an Adoption from Humane Society of Southern Illinois  
 www.humanesocietyill.org

**Topaz**  
 Female • Spayed • Orange Tabby  
 3 yrs old • Calm • Loving

Call the Humane Society of 618-457-2362 for more information about adoption.

	President	Vice President	Chief of Executive
Wages since 1969	\$1,800	\$1,600	\$1,600
New wage increase limit for Spring '10	\$2,800	\$2,600	\$2,100
Wages taking effect summer and fall 2010	\$4,000	\$3,000	\$2,200

Source: USG Amendment 5A 10-07 & Priciliano Fabian Pablo Tobon | DAILY EGYPTIAN

## Editorial Policy

Our Word is the consensus of the DAILY EGYPTIAN Editorial Board on local, national and global issues affecting the Southern Illinois University community. Viewpoints expressed in columns and letters to the editor do not necessarily reflect those of the DAILY EGYPTIAN.

## OUR WORD

# Admitting you have a problem is the first step

Ignoring something doesn't make it go away.

This is a lesson most of us learn in elementary school. Apparently administrators at this university missed that lesson.

Administrators were instructed not to comment on official enrollment numbers starting Thursday. The university did not release the information until 4:25 p.m. Monday, five minutes before the close of business. In addition, the university spokesman said no one would comment beyond the press release.

Secretaries for Victoria Valle, assistant vice chancellor of enrollment management, and Patsy Reynolds, director of undergraduate admissions, deferred comment to the chancellor's office Thursday, Monday and Tuesday.

The enrollment problem at SIUC affects the entire community — students, faculty, every employee on campus and every citizen in Carbondale. We all deserve to know the truth.

President Glenn Poshard was quoted as saying communication would be pivotal to the success of the university.

The DAILY EGYPTIAN agrees, but is

a little skeptical on the follow-through.

The enrollment problem has many contributors: The state's financial crisis, the deteriorating condition of many buildings on campus and a poor national economy are factors the university can't do anything about.

But there are things we can control.

One of the reasons given for the demotion of Walter Wendler in 2006 was a lack of communication. But Wendler brought stability to one of the university's top positions, and he thought for himself. We haven't seen much of that since his removal.

A lack of communication may be the reason administrators did not see data from a Pell Institute report offering solutions for retention problems at SIUC until recently, even though the university participated in the study a few years ago.

In December, Poshard said the university may have no other option but to close in March unless the state comes through with money it owes SIUC.

While this statement may have been intended as a warning to legislators, it sent a disturbing message to prospective students and any potential

**The enrollment problem at SIUC affects the entire community — students, faculty, every employee on campus and every citizen in Carbondale. We all deserve to know the truth.**

transfer student.

Administrators should not make it easy for prospective students to cross SIUC off their list of potential schools. People are looking for any reason to make the decision-making process easier.

And now, the university is hiding behind closed doors.

Poshard seems to be at a loss, and is putting all his faith in the incoming chancellor, Rita Cheng.

Cheng, who is currently the provost and vice chancellor for Academic Affairs at the University of Wisconsin-Milwaukee, will begin her duties June 1.

Cheng said her two main focuses will be enrollment and research, and she has her work cut out for her.

Not only does SIUC have approximately 3,000 students less than Chancellor Sam Goldman's goal of 22,500, but we have 3,000 students less at the

same time the state is at its absolute worse financially.

Granted, SIUC's retention problems could not have come at a worse time. The university is barely getting by, using tuition to help pay for salaries in February and then it will depend on the state, which owes more than \$100 million, to get through the semester.

Students keep leaving, and they are going to keep leaving if the state doesn't end this.

Too few students want to come here. Too many students don't want to stay here.

While the state must solve the financial crisis, it is past time for the university to take ownership of the enrollment problem. Programs such as the First-Year Experience are a start, but cheery, optimistic predictions followed by silence only breeds cynicism.

And the last thing SIUC needs is to give students another reason to leave.

## Submissions

Letters and guest columns must be submitted with author's contact information, preferably via e-mail. Phone numbers are required to verify authorship, but will not be published. Letters are limited to 300 words and columns to 500 words. Students must include year and major. Faculty must include rank and department. Others include hometown. Submissions should be sent to [voices@siude.com](mailto:voices@siude.com).

## Notice

The DAILY EGYPTIAN is a "designated public forum." Student editors have the authority to make all content decisions without censorship or advance approval. We reserve the right to not publish any letter or guest column.

# The Best Rentals in Town

## Available Fall 2010

www.carbondalereals.com

www.carbondalereals.com

www.carbondalereals.com

www.carbondalereals.com

www.carbondalereals.com

www.carbondalereals.com

### One Bedroom

- 607 1/2 N. Allyn
- 616 1/2 N. Allyn
- 504 S. Ash 4,5
- 507 S. Ash 1-8, 10-12, 14, 15
- 508 S. Ash 2,3
- 509 S. Ash: 2, 4-6, 8-14, 16-26\*
- 507 W. Baird
- 504 S. Beveridge
- 512 S. Beveridge 8
- 514 S. Beveridge 8
- 504 E. Vermont
- 608 1/2 W. Cherry
- 404 W. Cherry Court
- 405 W. Cherry Court
- 406 W. Cherry Court
- 407 W. Cherry Court
- 408 W. Cherry Court
- 409 W. Cherry Court
- 410 W. Cherry Court\*
- 201 W. College 1
- 403 W. Elm 2-4
- 718 S. Forest 1, 3
- 605 W. Freeman 3
- 507 S. Hays 2
- 509 1/2 S. Hays
- 208 W. Hospital #1
- 703 S. Illinois
- 101, 102, 201, 202, 203
- 612 S. Logan\*
- 400 W. Oak 3
- 410 W. Oak 1-5
- 202 N. Poplar 2,3
- 507 S. Poplar 2
- 301 N. Springer 1-4
- 414 W. Sycamore E
- 404 1/2 S. University
- 406 S. University 1-4
- 606 1/2 S. University
- 334 W. Walnut 1,2
- 602 W. Walnut
- 703 W. Walnut 1,2
- 400 S. Washington A,B,C\*

### Two Bedroom

- 503 N. Allyn
- 609 N. Allyn
- 616 N. Allyn
- 616 1/2 N. Allyn
- 408 S. Ash
- 504 S. Ash 1-3
- 508 S. Ash 1
- 514 S. Ash 1-6
- 502 S. Beveridge 2
- 507 S. Beveridge 1-2, 4,5\*
- 509 S. Beveridge 1, 2, 4,5
- 512 S. Beveridge 1-7\*
- 513 S. Beveridge 1-5
- 514 S. Beveridge 1-7
- 515 S. Beveridge 1-5
- 918 N. Bridge
- 508 N. Carico
- 510 N. Carico
- 604 N. Carico
- 720 N. Carico

- 908 N. Carico
- 911 N. Carico
- 205 W. Cherry
- 306 W. Cherry
- 311 W. Cherry 2
- 614 W. Cherry
- 404 W. Cherry Court
- 405 W. Cherry Court
- 406 W. Cherry Court
- 407 W. Cherry Court
- 408 W. Cherry Court
- 409 W. Cherry Court
- 410 W. Cherry Court\*
- 406 W. Chestnut
- 1201 W. College
- 201 W. College 1-3
- 309 W. College 1-5
- 310 W. College 1,2,4
- 400 W. College 1-5
- 401 W. College 1-7
- 407 W. College 1,3-5
- 409 W. College 1-5
- 501 W. College 1-6\*
- 503 W. College 1-6
- 507 W. College 1-6
- 509 W. College 1, 2, 4, 5
- 710 W. College 1-6
- 303 W. Elm
- 113 S. Forest
- 115 S. Forest
- 120 S. Forest
- 303 S. Forest
- 706 S. Forest
- 716 S. Forest
- 500 W. Freeman 1-6
- 605 W. Freeman 2
- 109 Glenview
- 520 S. Graham
- 507 S. Hays 2
- 402 E. Hester 1-7\*
- 408 E. Hester 1-3, 5-7
- 703 W. High E & W
- 208 W. Hospital 1
- 703 S. Illinois 202, 203
- 401 S. James
- 705 N. James
- 815 N. James
- 611 W. Kenicott
- 515 S. Logan\*
- 612 S. Logan
- 207 S. Maple
- 906 W. McDaniel
- 908 W. McDaniel
- 300 W. Mill 1-4
- 405 E. Mill
- 407 E. Mill
- 411 E. Mill
- 400 W. Oak 1
- 400 W. Oak 3
- 402 W. Oak E & W
- 501 W. Oak
- 567 W. Oak
- 300 N. Oakland
- 505 N. Oakland
- 511 N. Oakland
- 514 N. Oakland

- 602 N. Oakland
- 1305 E. Park Lane
- 202 N. Poplar #1
- 507 S. Poplar 1, 3-7
- 301 N. Springer 1-4
- 1619 W. Sycamore
- 1710 W. Sycamore
- 919 W. Sycamore
- 404 S. University N & S
- 404 1/2 S. University
- 408 S. University
- 402 1/2 W. Walnut
- 504 W. Walnut
- 820 W. Walnut #2
- 1004 W. Walkup
- 400 S. Washington A,B,C\*
- 600 S. Washington 1, 4,9
- 404 W. Willow
- 406 W. Willow
- 404 W. Willow

- 501 W. College 1-3\*
- 503 W. College 1-3
- 507 W. College 1-3
- 509 W. College 1,2
- 710 W. College 1-3
- 807 W. College
- 809 W. College
- 810 W. College
- 305 E. Crestview
- 104 S. Forest
- 113 S. Forest
- 115 S. Forest
- 120 S. Forest
- 303 S. Forest
- 603 S. Forest
- 766 S. Forest
- 716 S. Forest
- 605 W. Freeman 1
- 607 W. Freeman
- 109 S. Glenview
- 500 S. Hays
- 503 S. Hays
- 507 S. Hays 1
- 509 S. Hays
- 511 S. Hays
- 208 W. Hospital 2
- 212 W. Hospital
- 401 S. James
- 815 N. James
- 611 W. Kenicott
- 515 S. Logan\*
- 610 S. Logan
- 614 S. Logan
- 407 E. Mill
- 409 E. Mill
- 411 E. Mill
- 417 W. Monroe
- 400 W. Oak 1, 2
- 402 W. Oak E, W
- 408 W. Oak
- 501 W. Oak
- 505 N. Oakland
- 511 N. Oakland

### Three Bedroom

- 503 N. Allyn
- 607 N. Allyn
- 609 N. Allyn
- 408 S. Ash
- 410 S. Ash
- 504 S. Ash 2, 3
- 506 S. Ash
- 514 S. Ash 1, 3-6
- 409 S. Beveridge
- 501 S. Beveridge
- 502 S. Beveridge 1
- 503 S. Beveridge
- 506 S. Beveridge
- 507 S. Beveridge 1, 2, 4, 5\*
- 509 S. Beveridge 1, 2, 4, 5
- 513 S. Beveridge 1-5
- 515 S. Beveridge 1-5
- 918 N. Bridge
- 510 N. Carico
- 604 N. Carico
- 205 W. Cherry
- 209 W. Cherry
- 309 W. Cherry
- 405 W. Cherry
- 407 W. Cherry
- 501 W. Cherry
- 503 W. Cherry
- 606 W. Cherry
- 612 W. Cherry
- 614 W. Cherry
- 405 W. Cherry Court
- 406 W. Cherry Court
- 407 W. Cherry Court
- 408 W. Cherry Court
- 409 W. Cherry Court
- 406 W. Chestnut
- 1201 W. College
- 300 E. College\*
- 303 W. College
- 309 W. College 1-5
- 312 W. College 3
- 400 W. College 1-5
- 401 W. College 1-4
- 407 W. College 1,3-5
- 409 W. College 1-5

### See Our Show Apartment!

501 W. College #2  
**Monday thru Friday**  
 2:00pm to 6:00pm  
**Saturday**  
 11:00am to 2:00 pm  
 Addresses Subject to Change

**\*Available now**

**529-1082 • 206 W. College Suite 11 • Carbondale**

# Faculty Senate prepares for tough semester

**RYAN VOYLES**  
Daily Egyptian

## Budget top concern heading into spring

The Faculty Senate heads into the spring semester with the same concern everyone else has around campus — the budget.

Faculty Senate President Philip Howze said the budget would be the chief concern as the senate reconvenes for the first time this semester at 1 p.m. Tuesday in the Kaskaskia, Missouri Room of the Student Center.

"We are riding the wave, like everyone else, of budget uncertainty," Howze said. "We have a cash flow problem — we don't get the money

in regular installments when we need them."

Mary Lamb, secretary for the Faculty Senate, said the main concern heading into this semester is facing the unknown problems.

"We always have to look for the unexpected," Lamb said. "Especially in this financial crisis. We're always hearing about it."

"The senate has been talking with local legislators to find a way to borrow money in the same manner John A. Logan College does, Howze said. He

said the act is awaiting legislation, and the chances of it passing rest on Gov. Pat Quinn's shoulders.

The budget will not be the lone focus for the senate this semester though.

Among the items to be discussed through the spring is the passing of additional funding for the Sakaki First Year program, which focuses on first-year students in hopes of retaining them throughout their educational career, Howze said.

Lamb said funding the project is the biggest concern right now.

"We have to try to figure out a way to fund this important project," she said.

Another proposal, which will appear before the senate Tuesday, is to begin allowing a minor in photography, which Lamb said the senate would vote on in its meeting.

The Open Access Program is still waiting a resolution from the grant council before a proposal can come in front of the senate. The program, through tax funds, would allow journals and articles to be open and free for all students.

Howze said this proposal is especially important for students so they would not have to face the high prices that come with purchasing articles.

The senate will also begin planning for elections in April, with nominations beginning in March.

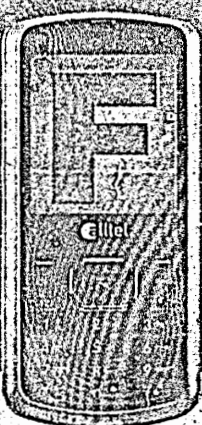
Howze said he still has not decided if he will run for re-election.

"I have people running up to me all the time telling me to do it again," he said, laughing. "My laugh will be the only answer I give right now."


Ryan Voyles can be reached at [rvoyles@stu.edu](mailto:rvoyles@stu.edu) or 536-3311 ext. 259.

# Thumbs Up!

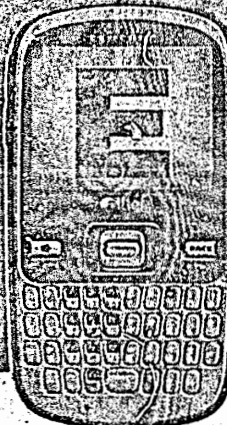
## Text-friendly phones for



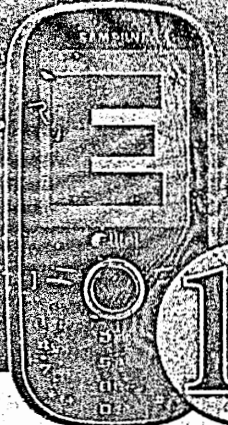
**LG Banter™**  
\*Free after \$50 mail-in rebate, with activation & qualifying 1-yr. agreement




**LG 8575 Touch**  
\*Free after \$50 mail-in rebate, with activation & Smart Choice Pack agreement




**Samsung Freeform™**  
\*Free after \$31 mail-in rebate, with activation & qualifying 1-yr. agreement



**Samsung DoubleTake™**  
\*Free after \$50 mail-in rebate, with activation & qualifying 1-yr. agreement




**1 YEAR CONTRACTS**  
Same low price, shorter contract.



**My Circle\* includes unlimited texting to your circle.**  
on select plans \$79.99 & higher. Funds below.\*

**Plus Add Lines Get 3 Months FREE**

**alltel.com**  
1-800-alltel



<p><b>Portsmouth</b> 1228 E. Main   (814) 823-2295</p> <p><b>Fairfield</b> 1003 Commerce Rd.   (814) 842-8592</p> <p><b>Harrisburg</b> 720 Rector House Dr.   (814) 752-7273</p> <p><b>North</b> 1713 S. Park Ave.   (814) 825-6219</p>	<p><b>Myrtle</b> 2701 W. Delaware   (814) 993-8220</p> <p><b>PA. Waves</b> 4828 Broadway   (814) 244-2295</p> <p><b>Obese</b> 10022 N.W. St.   (814) 295-4948</p>	<p><b>Orlando</b> Orlando Commons   (814) 266-2136</p> <p><b>Dalton</b> Harrison County Comm.   (814) 726-2242</p> <p><b>DuBois</b> 204 Southtowne Shop Ctr.   (814) 542-1710</p> <p><b>Flora</b> Flora   (814) 885-2220</p>	<p><b>PA. Central</b> Pottsville Cellular   (814) 262-4421</p> <p><b>PA. Western</b> Pottsville Cellular   (814) 244-5431</p> <p><b>West</b> Pottsville Cellular   (814) 823-2427</p>
---	---	--	---

\*Promotional offers available at participating participating stores and the following Alltel retail locations only:  
 Alltel Retail Stores:  
 11000 Lough Ave. | (814) 824-1201  
 214 Duane Dr. | (814) 828-2256  
 For Business & Government Accounts call 1-866-915-8122 or visit [alltelbusiness.com](http://alltelbusiness.com)

Offers available at participating locations only. Alltel Wireless customer is to serve 2.2 million customers & operates in 51 Cellular Market Areas (CMAs) that Verizon Wireless is required to divert.

\*Unlimited My Circle Text Offer valid as of 9/1/2009. Unlimited My Circle text, pictures & video messaging is available to qualifying users & includes activation on eligible My Circle calling plans \$79.99 & higher. Unlimited My Circle & Alltel Mobile-to-Mobile texting are available to all lines associated with the eligible primary account. Mobile-to-Mobile texting to participating Alltel customers only. Texted messages are not unlimited & are not included in unlimited messaging to customer's designated circle number or other Alltel customers. Each instant message sent will incur a charge equal to your plan, even when the receiver is another Alltel customer or designated circle member. Unlimited messaging to Alltel Customers & Customer's text messages are limited to text, pictures & video only. Designated numbers must match primary account but are not limited to Alltel My Circle users. Numbers, by which the U.S. is not being short-circuited. Features may be discontinued at Alltel. Not available to prepaid or business accounts. Pictures & video messages not available on all phones. See Alltel.com for phone details. Airtime charges apply when customer sends pictures or video messages to non-Alltel numbers. Messages will be stored & delivery attempted for up to three (3) days. Alltel does not guarantee message delivery, completion or delivery. Messages are neither monitored nor controlled for content, except for direct consumer price from Alltel. Only those messages controlled to be unarchived until you call, according to your plan. Messaging detail fees, text & phone number the message was sent to is currently not available. On select phones, text messages are limited to 160 characters per message. Short-circuited messages & charges of your package shipment will be charged at 15¢ per message.

Federal, state & local taxes & charges apply. In addition, Alltel may charge monthly accessories, repairs, administrative & 911 surcharges up to \$2.25 & include a state Universal Service Fund fee that may vary by customer except. These additional fees may not be taxes or government-required charges & are subject to change. Additional information regarding your taxes, fees & surcharges is available from your Alltel service representative or on your monthly bill. Please Contact Flamingo & applicable retailers available for a limited time, while supplies last, with activation of a qualifying rate plan. Offers may be in the form of a VISA gift card. Limit 1 rebate per qualified purchase. Rebate may be returned within 15 days of purchase. If used to rebate certificate has been returned, Alltel will refund the purchase price from the rebate amount. Customer must activate rebate. See rebate certificate for details. Smart Choice Pack Requirement: All new or existing customers activating or upgrading to a text plan, including the LG Text, are required to purchase a minimum Smart Choice Pack of \$99.99 or higher for the duration of your contract or until the quality for the contract phone price. Add Lines From Three Months Free offer: valid on newly activated secondary lines only. New & existing prepaid customers may add up to three (3) new secondary lines monthly. Offer is not available to any existing primary line of service. New service agreement & \$25 activation fee for each line is a competitive rate plan activation. Customer must consent to a qualifying plan on the original duration of three months promotional period. Three Months Free refers to the stated monthly access charge for each qualifying line, according to your rate plan. Customer may be billed for a prorated portion of rate plan charges in the first bill following activation. Five access charges upon the first day of the first bill cycle following activation. Upon the fourth bill cycle following activation, each additional line reverts to the regular monthly access charge, according to your rate plan. Lines of a secondary line per primary account. Offer valid as of 9/1/2009 & may be discontinued at the discretion of Alltel. Additional information: This offer may be limited due to line, support, coverage, or participating carriers. \$25 non-refundable activation fee & possible \$200 early termination fee may apply per line. Offers are subject to the Alltel Terms & Conditions for Communications Services available at any Alltel store or [alltel.com](http://alltel.com). All product & service marks referenced are the names, trade names, trademarks & logos of their respective owners. Screen images simulated. ©2010 Alltel Communications, LLC. All rights reserved.



# Confusion the winner in Illinois governor primaries

CHRISTOPHER WILLS  
The Associated Press

CHICAGO — The primary election that was expected to launch a political battle in President Barack Obama's home state instead left Democrats and Republicans squabbling amongst themselves Wednesday over governor's races that were virtually tied.

Gov. Pat Quinn claimed victory in the Democratic primary over Comptroller Dan Hynes, despite a margin of less than 1 percent. Though Obama called Quinn to offer his congratulations, Hynes has refused to concede.

"It's time to end the fighting," Quinn said as he thanked voters at a Chicago train station. "I don't

believe we are benefiting in Illinois, certainly in the Democratic party, by having fighting."

On the Republican side, Sen. Bill Brady led by just a few hundred votes over Sen. Kirk Dillard. Dillard said a victory by Brady, a downstate conservative with little support in the Chicago area, would hurt the GOP's chances of reclaiming the governor's office.

"If he's the nominee, he'll have a much, much more difficult time than me beating Pat Quinn," Dillard said Wednesday at a Republican "unity" breakfast.

Illinois Republicans hope to capture the governor's post as well as Obama's former Senate seat by exploiting Democratic turmoil and scandal, including the arrest and ouster of

former Gov. Rod Blagojevich. GOP victories in an increasingly Democratic state would be another blow to Obama, already stinging from the Republican victory in a Massachusetts special election for Edward Kennedy's former Senate seat.

The Senate primary produced no surprises. State Treasurer Alexi Giannoulias, an Obama friend and former banker, captured the Democratic nomination. Five-term U.S. Rep. Mark Kirk was the Republican pick.

For governor, it was a different story.

One or both of the races could wind up going to a recount. Illinois law doesn't require recounts in close races, so the candidates would have to decide whether to request one and cover the costs.



BRIAN CASSELLA | MCCLATCHY TRIBUNE

Illinois Gov. Pat Quinn claimed victory over Comptroller Dan Hynes in the Democratic primary for governor on Tuesday in Chicago, Illinois.

**Aspen Court Apartments**

**HUGE**  
**4 BEDROOM / 4 BATHROOM**  
**TOWNHOUSES AVAILABLE FOR FALL 2010!**

www.aspencourt.net • 1101 E. Grand Ave. • 618-549-1700

February 10, 2010

# Housing Guide

*Your guide to reaching the student market.*

For more information call  
530-3311 Text 237

You're  
*smart, beautiful, and talented...*  
but **How Do You Look on Paper?**

Beauty your resume with real world experience at the  
Daily Egyptian!

**NOW HIRING**  
**Advertising Sales Representatives**

Must be enrolled as a full time student for the Fall semester.  
Advertising majors preferred, but open to all majors. Must  
have strong work ethics, reliable, transportation,  
and competitive spirit!

## Classified Ads

### Placing an Ad

- Call us at (618) 536-3311
- Stop by in person at the Communications Building, room 1250, Southern Illinois University at Carbondale.
- Fax us a copy of what you would like printed/advertised at (618) 453-3248
- E-mail us a copy of what you would like printed/ad/revised to [classified@siu.edu](mailto:classified@siu.edu)
- Go to [www.siu.edu](http://www.siu.edu) and click the "Classifieds" link.

### Rates

All the ad rates are based on consecutive running dates.  
For more information contact the classifieds desk at  
(618) 536-3311 ext. 225

### Deadlines

Line Ads: 11:45 a.m., 1 day prior to publication  
Display Ads: 12 Noon, 2 days prior to publication



### Payment Options

The Daily Egyptian will accept cash, check or credit cards as payment. The amount due must be paid in full prior to the placement of your ad. There is also a returned check fee of \$25.00 per offense.

## For Sale

### Auto

**BUYING JUNK CARS** and trucks, wrecks, running or flooded, cash paid, any year. 521-7220.

**CHRYSLER SEBRING, MODEL 2001**, burgandy color, convertible, 2 door, \$4999, 618-303-7488.

**1988 VOLVO 240 GL**, good cond., perfect interior, silver, automatic, a/c, \$900 obo, call 309-718-8151.

**BUY, SELL, AND TRADE AAA Auto Sales**, 605 N Illinois Ave, C'dale, 457-7931.

**2000 MAZDA MIATA LS**, convertible, 3 speed manual, 182K, well maintained, \$3500, 618-687-2816.

**VOLVO, SAO TURBO, 2001**, sun-roof, leather, new tires, alloy wheels, 33 mpg, 130K, \$4500, 618-561-0123.

**WANTED TO BUY:** vehicles, running or not, trucks & cars, \$25-\$500, call anytime, 218-6289 or 439-6561.

## Parts & Service

**STEVE THE CAR DOCTOR**, Mobile Mechanic and Snow Removal, 457-7984 or mobile, 525-8031.

### Homes

**CDALE**, 1002 S. Oakland, across from BR1, 1.5 story, 3 bdrm, 2.75 baths, fireplace, hardwoods, 1944 sq ft, forced air, gas heat, c/a, full basement, fenced backyard, garage w/attached shed, \$187,000, 457-2282.

**HOUSE FOR SALE** bungalow on N Sprague, \$43,000, buyer eligible for \$5,000 for city credit & \$4,500 stimulus credit, please call Clyde Swanson, 549-7292. ALSO nice house on hill at buyer elig for \$5,000 city credit plus \$8,000 stimulus credit.

### Furniture

**PILLOW TOP QUEEN** mattress set, set in plastic, cost \$900, sell \$195, Marion, 618-559-6044.

### Appliances

**\$100 EACH WASHER, DRYER**, stove, refrigerator, 90 day guar, Able Appliances, 457-7767.

**REFRIGERATOR**, 4 yr, \$195, glass top stove, \$250, w/d, 3 yr, \$350, side by side refrigerator, water/cooler door, \$250, 457-8372.

## For Rent

### Rooms

**5 MIN WALK** to campus, clean facility, private parking, only \$235/mo, util incl, 549-2831.

**CHRISTIAN STUDENT HOUSING**, affordable Christian living, 2 blocks from campus, furnished rooms + util, call 618-318-1701.

### Roommates

**ROOMMATES WANTED FOR Fall 2010**, 2 or 3 females, \$285 plus util, 618-537-1178 or 618-318-1409.

**ROOMMATE WANTED NOW** at 408 W ME, 3 roommates, looking for 1 more, please call Clyde Swanson, 549-7292 or 624-3793.

**NICE HOUSE** w/brplace near Law School, sublet, \$250/mo, 3 people looking for 1 more, please call Clyde Swanson, 549-7292 or 624-3793.

## Apartments

**SCHILLING PROPERTY**, 635 East WALNUT, www.schillingprop.com, 618-849-0895

**LEASING NOW FOR 2010-2011**

**1 BDRM** 404 W. MILL, 905 E. Park, 6293 OLD HWY 13

**2 BDRM** 404 W. MILL, 905 & 905 E. PARK, 953, 1020, 1025

**0 & 4 BDRM** 404 & 408 W. Mill

**NOW RENTING FOR 2010**, 1-4 bdrm houses and apts, nice, all smart, Van Arman 549-4935.

**2 BDRM DUPLEX, NICE & quiet** area, c/a, w/d, no dogs, quiet people only, avail Jan 11, 549-0081.

**FALL 2010, 4 AVAIL APTS, 1 & 2 bdrms**, cathedral ceilings, hardwood floors, 6W location, call, 549-4935.

**RENTING NOW FOR AUG. 1, 2 and 3 bdrms**, townhouses, duplexes, and houses, many extras, 549-8000, www.universityheightrentals.com

**NICE 1 & 2 BDRM** apartments, walk to campus, pet friendly, please call Clyde Swanson at 549-7292 or 624-3793.

**OUR NEW HOUSING** option, get-carbondealsepartments.com, offers an interactive, way to search for housing solutions by price, amenities and location. The search engine also offers a way to view pictures and floor plans of the property to make your housing search a breeze. In addition, the online accessibility makes it available to you 24 hours a day, 7 days a week. Call a classified advertiser at 536-3311, option 2, for information on how to list your vacancies on get-carbondealsepartments.com.

**MBORO, 1 BDRM CARPET**, air, no pets, very attractive, \$225/mo., 957-8202 or 857-4577.

**CVILLE AREA, 2 BDRM, 1 bath**, appliances incl, water and trash incl, no pets, \$450/mo, 618-303-2180.

**1P AND MP RENTALS** 1,2,3 & 5 BDRM HOUSES, APTS & TOWNHOUSES

708 W. Freeman, all util incl, cable, internet, 1, 2 & 3 bdrms, avail Jun & Aug 2010

Grand Place, 900 E. Grand, 2-3 bdrms, 2 bath, w/d, a/c, cable, hi speed internet incl, avail Jun & Aug

Country Village, quiet, country setting, pool and club house, close to SIU, water, sewer, trash, a/c, w/d incl, avail Jun & Aug

906 S. Grant City Road, Apt A, 2 bdrm house, avail Aug, \$650/mo

200 W. Monroe, 1 & 3 bdrms apt, avail Aug, \$350-\$75/mo

3-5 BDRM HOUSES Avail Aug

**MBORO, DOWNTOWN, NICE** 1 bdrm, trash and houseware pack, \$275/mo, call 687-1873.

1, 2, 3, 4 & 6 BDRM HOUSES & APTS rental list at 310 W Cherry, walk to SUU, 549-4803, 9-4 pm.

APARTMENTS & HOUSES, close to SUU, 1, 2 & 3 bdrm, avail now, Bryant Rentals, 529-1820 or 529-5381.

VERY LG 3 BDRM, unfurn, a/c, hardwood floors, close to SUU, avail Aug, call 924-1963.

AFFORDABLE 2 bdrm apcs, 2 full baths in each, w/d, d/w, 1 mile east of University Mall, 618-731-9052.

C'DALE, NICE, LARGE, 1 or 2 bdrm, avail now May or Aug, 400 N Westridge, upscale neighborhood, laundry, \$480-\$550, 522-5335 or 549-1028, no pets, www.trailerrentals.com

NOW LEASING BROOKSIDE APTS, ALL UTIL, INCL spacious 1, 2 & 3 bdrms, c/a, on site laundry, low deposit, on-site mgmt, pet friendly, free parking, call for a tour 549-3600.

APPLE LANE, 2 BDRM, 1 bath, lg liv area, \$400/mo, no pets, call 618-534-9738.

1, 2, 3 BDRM APTS and 2 bdrm townhome starting at \$525, short term leases avail, call Raiser Property Management at 618-549-2390.

BEAUTIFUL STUDIO, ONE & TWO bdrm apcs, near SUU, starting at \$265/mo, for details call 457-4472.

SPACIOUS FURN 6 STUDIO, near campus, 549-6990, www.lincolnvillageapts.com

NICE 1 or 2 BDRM, close to campus, avail now, please call Clyde Swanson mornings at 549-7292 or 924-3793.

CTDALE BORO NICE & Spacious 2 bdrm, country setting on W Lake Rd, laundry, water incl, no pets, \$450/mo, 549-4688

TOP C'DALE LOCATIONS, 1 & 2 bdrm apcs, a/c, incl water & trash, also luxury studios, no pets, address list in front yard at 408 S Poplar, call 684-1415 or 684-8862.

MOVE IN SPECIALS!!! GEORGETOWN APT, 1000 E GRAND AVE, 2 bdrm avail, water, trash incl, on-site laundry, walking distance from SUU, quiet location, call 529-2187.

LARGE OR SMALL, 1 bdrm apcs, close to SUU, avail Aug, 924-1963, carbondalehousing.com

EFFICIENCY APT, \$250/mo, good neighborhood, clean, quiet, low rent, trash & water incl, on site laundry & laundry, for PHD or grad, 684-5127.

1 BDRM LOFT, various locations, huge bedroom, w/d, d/w, cats considered, 555-580, couple \$60 extra, 457-8194, www.alpha-rentals.net

ALL NEW STUDIOS! Looking for a new apt? Start here, all new decor and apt, many amenities, need a little more room, ask about our Sweet Suites, Apts, starting at \$350/mo, 457-4422.

C'DALE AREA, (7-10 minutes from SUU), large 1 bdrm apcs, under \$400/mo, no pets, call 684-1415 or 684-8862.

C'DALE, 1 BDK from campus, effc, \$395/mo, also 1 or 2 bdrm avail, no pets, call 957-9202 or 687-4377.

C'DALE, 1 & 2 bdrm apcs in a quiet, well maintained environment, walking distance to campus and hospital, carpeted, appl, etc and off-street parking, call: 618-997-8300 or visit: www.dedictchirocenter.com

WEDGEWOOD HILLS, 2 bdrm, 1.5 bath, appl, fireplace, book, grad or prof, for May & Aug 2010, 549-5590.

LOVELY 2 BEDROOM HOUSE near SUU, nice yard, w/d, perfect for 2 students, \$450/mo, 457-4422.

HUGE DELUXE 4 or 5 bdrm house, 15 rooms, porch with swing, patio, garage, d/w, a/c, w/d, 2 kitchens, 2 bath, call Van Awton 549-4935

4 BDRM, 2.5 bath, d/w, w/d, a/c, lg liv room & kitchen, \$1000/mo, no pets allowed, call 618-534-9738.

HOLLYWOOD, BEAT BRAD PIT to these beautiful 2, 3 & 4 bdrm houses, granite, hrdw/flrs, lg bdrms, loaded, Van Awton 549-4935.

PERFECT COLLEGE HOUSE for all, better than new, huge living room and kitchen, granite, energy effc, a/c, oven hrdw flrs, 4 lg bdrms ea unique, full basement, 549-4935

LIKE NEW, 3 BDRM, 1 block to campus, energy effc, c/a, w/d, d/w, new carpet/ble, private yard, free offstreet parking, no pets, 549-4806.

ALPHA S 2 BDRM, 747 E Park, 1.5 bath, w/d, d/w, breakfast bar, private fenced patio, ceiling fans, cats considered, \$750. Same floorplan avail 2421 S IL \$600, 304 N Springer \$720, 1000 Brentwood, \$760/mo, 457-8194, www.alpha-rentals.net

2 BDRM, 2.5 BATH, d/w, w/d, whirlpool bath, large rooms, 1000 Brentwood, \$650, 425 Robinson Circle, \$900, cats considered, 457-8194, www.alpha-rentals.net

ASPEN COURT APTS, 4 bdrm, 4 bath townhouse, pool, cardio room, computer lab, basketball court, Aug 2010, 549-1700.

WEDGEWOOD HILLS, 2 bdrm, 2.5 baths, appl, c/a, a/c, a/c, w/d, no pets, May and Aug 2010, 549-5596.

M BORO, NEWER LARGER model, secure apt, 2 bdrm, 1.5 bath, no pets, garage, 521-5014.

3 BDRM, 2 BATH, remodeled, w/d hook-up, c/a, storage shed, hrdw flrs, no pets, sect. 6 ok, 525-6650.

AVAIL APT, NICE 2-3 bdrm, office, water paid, remodeled, pets ok, 808 1/2 N Springfield, \$450, 924-2724.

2 BDRM apt, near Crab Orchard Lake, \$450/mo call 618-559-9561 or 618-282-4258.

MARTIN PROPERTIES 529-7518 Avail Fall 10 2 Bdrm 402 S. Ash

3 Bdrm: 418 S. Washington 401A W. Elm. 2 bdrm 724 Maple, Elm Boro

4 Bdrm: 608 N. Carico, 2 bath, clean, safe housing for you!

TOP C'DALE LOCATIONS, 2, 3, 4 & 5 bdrm houses, w/d, most cats, some w/extra bath, free mo, no pets, address list in front yard at 408 S. Poplar, call 684-1415 or 684-8862.

1, 2, 3, 4, & 6 BDRM HOUSES & APTS rental list at 310 W Cherry, walk to SUU, 549-4808, 9-4 pm.

C'DALE AREA, (7-10 min from SUU), no zoning, spacious 2, 3 & 3 bdrm houses, w/d, carpet, patio or huge deck, some c/a, some w/extra bath, free mo, no pets, call 684-1415 or 684-8862.

BRAND NEW AND newly remodeled on Mill St. 305 & 307 E. Mill, 606, 608, 902, 904, 906, 908, 1000 & 1002 W. Mill, please call Clyde Swanson at 549-7292 or 924-3793.

FOR ALL YOUR housing needs, www.Carbondalehousing.com

OUR NEW HOUSING option, getcarbondaleapartments.com, offers an interactive way to search for housing solutions by price, amenities and location. The search engine also offers a way to view pictures and floor plans of the property to make your housing search a breeze. In addition, the online accessibility makes it available to you 24 hours a day, 7 days a week. Call a classified advisor at 536-3311, option 2, for information on how to list your vacancies on getcarbondaleapartments.com.

3 BDRM, 1 bath, large rooms, d/w, w/d, quiet location, central air, cats considered, \$920, 457-8194, www.alpha-rentals.net

2 BDRM, 2.5 BATH, on lake, fireplace, many extras, Giant City School Dist, avail now, 549-8000, www.universitythegreentents.com

HOUSES FOR RENT Close To Campus 2 BDRMS with w/d, c/a, 316 West Walnut, 805 West Walnut, 209 South Springer

3 BDRMS with w/d, c/a, d/w, 903 West Freeman, 912 West Mill

1 BDRM APT, 707 South Oakland All Avail August 15, call 621-6800

LARGE 5 BDRM 2 BATH, close to campus, great yd, 2 story, w/d, d/w, c/a, a/c fan, full basement, hrdw/flrs, 805 Cherry, \$310 per bedroom, call 773-419-8678.

4 BDRM, NEAR the Rec Center, 1.5 bath, w/d, d/w, ceiling fans, cats considered, 995, 457-8194, www.alpha-rentals.net

4 & 5 BDRM HOUSES, central heat/a/c, w/d, close to SUU, avail Aug, call 924-1963, carbondalehousing.com

NICE 1 & 2 BDRM, \$225-\$300, LAWN & trash incl, mgmt & maint on site, avail now, 549-8000, no dogs, www.universitythegreentents.com

NEWLY REMODELED, 3 BDRM, water, trash, & lawn incl, lg shaded lots, starting at \$300/mo, call 549-4713, www.greentents.com

2 BDRM TRAILER, lots avail, \$250 & up/mo, C'Dale 549-3850.

BRAND NEW, 850 SQ FOOT 2 bdrm, 2 bath, w/d hookups, d/w, a/c, energy effc, \$525/mo 618-524-0505 complementrentals.net

LOW COST RENTALS, \$250 & up, pets ok, 529-4444, CHUCKSRENTAL.com

2003 MOBILE HOMES for rent, \$300-500, under new management, 618-549-3000.

COMMERCIAL PROPERTY C'DALE, QUIET, SAFE LOCATION, on edge of town, nice landscaping, ample parking, 1200 sq ft, avail now, 595-000, 549-8000.

Help Wanted 2 BDRM TRAILER in... exchange for work on farm... 549-3850...

PART TIME DRIVER wanted, apply in person at Burper To Burper, 501 East Main Street, C'dale.

NOW ACCEPTING APPLICATIONS for mechanics, CDLs are required for all positions, we train for CDLs if necessary, call Back Bus at 549-2877.

SEEKING EARLY MORNING sitter in my Herrin home for two young, well behaved children, 3 to 4 mornings per week at 5:30 am, 713-5396.

BARTENDING, UP TO \$300/DAY, no exp necessary, training provided, 800-965-6520, ext 102.

PT DENTAL ASSISTANT, receptionist w/opportunity to become FT, good pay, good benefits, enjoyable working environment, for immediate consideration please fax resume to: 618-687-4333 or send to Murphystown Dental Center, 1116 Locust St, Murphystown, IL 62962.

BARTENDERS, WILL TRAIN, fun, energetic, party-person... Hurley's/My Coyote, Johnson City, 20 min from C'dale, 922-9402.

Services Offered BLUE SKY VALENTINE Wine & Chocolate Basket for that someone special, delivered to work, home or wherever within a 25 mile radius of the Westview, Prices from \$29, call or order thru Feb. 12th, 618-995-9463.

CERTIFIED INSTRUCTOR FOR foreign accent modification, can provide individual instruction, advanced speech language pathology with 20 years exp, 618-559-6401.

HANDYMAN SERVICES, PAINTING, yard work, home repairs, 618-525-6650.

FREE FIBROMYALGIA WORKSHOP, Tues, 2/16 at 7 PM, Seating Limited - Call 529-0921

Wanted WE BUY MOST refrigerators, stoves, washers, dryers, window a/c, Alike Appliances, 457-7787.

Found FOUND, OLDER FEMALE cocker/lab mix, near Longbranch, yellow fur, call 647-293-1430.

Announcements IF YOU USED Yaz or Yasmin Birth Control Pills between 2001 and the present time and developed blood clots or suffered a stroke or heart attack requiring hospitalization, you may be entitled to compensation, call attorneys Anna Yake & Charles Johnson, 1-800-335-5727.

Modeling BE A STAR, HOLLYWOOD IS LOOKING FOR YOU, EXCLUSIVE judged tours to regular, actual photos and audition at four major casting agencies in Hollywood, California, immediate work avail, call now for spring tour, 618-426-3843.

www.grentals.com G&R RENTALS 851 E. GRAND AVE.

549-4713, www.greentents.com

CHUCKSRENTAL.com

618-549-3000.

618-524-0505

529-4444

618-549-3000.

618-549-8000.

549-3850...

501 East Main Street, C'dale.

549-2877.

713-5396.

800-965-6520, ext 102.

Need Something?

Want Something?

Can't Live Without Something?

then check out the Daily Egyptian Classifieds!

www.grentals.com

G&R RENTALS 851 E. GRAND AVE.

549-4713, www.greentents.com

CHUCKSRENTAL.com

618-549-3000.

618-524-0505

529-4444

618-549-3000.

618-549-8000.

549-3850...

501 East Main Street, C'dale.

549-2877.

713-5396.

800-965-6520, ext 102.

Houses 1-8-10-11-12 2 BDRMS, 1104 N. Carico & 402 Ridgdon, 924-0535, no pets www.comptonrentals.net

LRQ, 4 bdrm, c/a, w/d, 1 block from campus, 508 S. Poplar, avail now, call 618-528-0063.

C'DALE AREA, (7-10 min from SUU), no zoning, spacious 2, 3 & 3 bdrm houses, w/d, carpet, patio or huge deck, some c/a, some w/extra bath, free mo, no pets, call 684-1415 or 684-8862.

BRAND NEW AND newly remodeled on Mill St. 305 & 307 E. Mill, 606, 608, 902, 904, 906, 908, 1000 & 1002 W. Mill, please call Clyde Swanson at 549-7292 or 924-3793.

FOR ALL YOUR housing needs, www.Carbondalehousing.com

**Aspen Court Apartments**

NOW LEASING FOR FALL 2010

1 bed/ 1 bath 3 bed/ 3 bath  
2 bed/ 2 bath 4 bed/ 4 bath

ALL UNITS INCLUDE:

- Free High Speed Internet
- Full Size Washer/Dryer
- Central A/C
- Overwave Dishwasher
- Locked Halls w/ Intercom
- Buzzer Doors
- Free Expanded Cable
- Full Time Maintenance Staff
- Private Deck on 2nd/3rd Floor
- On-Site Management

Swimming Pool & Basketball Court!

www.aspencourt.net • 1101 E. Grand Ave. • 618-549-1700

The next 60 people to sign a lease for Fall 2010 will receive a \$200 Visa Gift Card!

We've got an APT for that

RESERVE 618-549-4713

24 HOUR EMERGENCY MAINTENANCE ON CALLED BLUE ROUTE  
LAWN CARE, TREE TRIMMING, & SNOW REMOVAL NO PETS ALLOWED  
FAMILY OWNED & OPERATED SUMMERATED PEARL

1 BEDROOM APARTMENTS  
2 BEDROOM FLATS  
2 BEDROOM TOWNHOUSES  
1, 2 AND 3 BEDROOM MOBILE HOMES

# STUDY BREAK

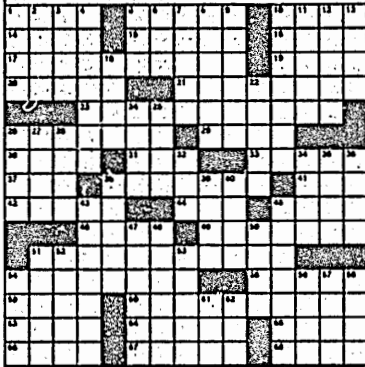
**JUMBLE**  
THAT SCRAMBLED WORD GAME  
By Mike Argirion and Jeff Knurek

**NAGLD**



## Crossword

Wednesday's answers



- Across**
- 1 Clap contents
  - 5 Grass surfaces
  - 10 Whirlpool
  - 14 Wagered
  - 15 Slanted
  - 16 Like undecorated walls
  - 17 Start of a quote
  - 19 Slammer at sea
  - 20 VIP roster
  - 21 With no margin for error
  - 23 Quote, part 2
  - 26 Grifter's easy mark
  - 29 Prohibition action
  - 30 It's guts to the lions
  - 31 Prohibition
  - 33 Flygirl's destination
  - 37 Understood
  - 38 Author of the quote
  - 41 Greet warmly
  - 42 Photographer Adams
  - 44 Curly poker?
  - 45 Gebu's capital
  - 46 Ragtime piece that

- Down**
- 1 became Vincent Lopez's theme
  - 49 It, as flies
  - 51 Quote, part 3
  - 54 Quivering
  - 55 Salad bar pair
  - 59 Cuernavaca crowd?
  - 60 End of the quote
  - 63 Raced
  - 64 "Whoopee"
  - 65 Logician's word
  - 66 Empire until 1991; Abbv.
  - 67 Doesn't put anything away for a while?
  - 68 Harbor hauler
  - 1 became Vincent Lopez's theme
  - 7 BR of bridge-building hardware
  - 8 Biceps, e.g.
  - 9 Sedimentary rock layers
  - 10 Good time for a beach-comber
  - 11 "Spish Splash" singer
  - 12 Manhattan, for one
  - 13 Salecrades
  - 18 Name of four Holy Roman emperors
  - 22 Doorbell sound
  - 24 Four-F's opposite, in the draft
  - 25 Wave maker
  - 26 Women's links gp.
  - 27 Pressing need?
  - 28 Examiners of boxes
  - 32 Objective
  - 34 Make small talk
  - 35 Greek salad slice, briefly
  - 36 Like good bourbon
  - 38 High, as a kite

FENS	PHASE	MES
ITEM	LAPSE	MALT
JAWA	ARLAL	NEHRU
ILL	ICEE	ORLON
YAKI	MAVALLEY	
BOWLED	ALTER	
OREAD	VALUE	
PODS	VENOM	EMMA
	FILER	AGIAN
JARED	ITABCA	
RAPID	TRANBIT	
TIBIA	ELKE	ALI
QABARDINE	JACKET	
ITEN	STARE	HENS
FAR	TBLOT	INDY

- 39 Get rid of
- 40 Ex-Speaker Gingrich
- 43 Retail computer buyer
- e.g.
- 45 Curly group?
- 47 Much
- 48 First name in soul
- 50 "git"
- 51 Jackson 5 dos
- 52 Stros, for example
- 53 Up for
- 54 Alaska island closer to Russia than to Alaska
- 56 DEA rader
- 57 Cautionary data entry acronym
- 58 Winter blanket
- 61 Twiddle
- 62 Baseball's Cobb and Cline

# SUDOKU

THE SAMURAI OF PUZZLES By The Mepham Group

Level: 1 2 3 4 Complete the grid so each row, column and 3-by-3 box (in bold borders) contains every digit 1 to 9. For strategies on how to solve Sudokus, visit [www.sudoku.org.uk](http://www.sudoku.org.uk).

		6	1		9			
1				3				5
9	1		4			8		6
	8		9		6			3
4		3			1			9
								7
				6				8
			2		7	9		

Wednesday's answers

8	6	2	4	5	9	1	7	3
9	1	4	7	3	8	5	6	2
3	5	7	2	1	6	4	8	9
6	8	5	3	4	1	9	2	7
4	2	1	9	8	7	6	3	5
7	3	9	5	6	2	8	1	4
2	7	8	6	9	5	3	4	1
1	9	3	8	2	4	7	5	6
5	4	6	1	7	3	2	9	8

## Horoscopes

By Nancy Black and Stephanie Clements

**Today's birthday** — Make this the year to develop an alternative income stream. Have some brilliant ideas for a product or story? Develop them now. Take every opportunity to meet like-minded people to share ideas and get strong feedback. Don't be afraid to work hard for what you want.

**Aries (March 21-April 19)** — Today is a 6 — Use your imagination to help group members. Because you're more flexible, you get your own work done and still have time. A dream may provide the clue you were looking for.

**Taurus (April 20-May 20)** — Today is a 6 — You get exactly what you want (and you deserve it, too). Imagination is the only restriction on your accomplishments, so dream on!

**Gemini (May 21-June 21)** — Today is a 6 — Eat breakfast with your soul mate or partner. Then take on the day using your imagination to create solutions, even where none seem possible.

**Cancer (June 22-July 22)** — Today is a 5 — Create a loving and vibrant atmosphere around you. Draw love into your life by sending it out to brighten all your relationships. You get a surprise.

**Leo (July 23-Aug. 22)** — Today is a 5 — Your partner or close associate supports your main thesis. Work out details as the two of you move forward. Take the project home with you.

**Virgo (Aug. 23-Sept. 22)** — Today is a 7 — Daily activities flow more smoothly. You work backstage on a transformation that will rock your world. Choose dramatic colors.

**Libra (Sept. 23-Oct. 22)** — Today is a 6 — Attend a social event in style, with costume and accessories planned well in advance. Turn up the elegance.

**Scorpio (Oct. 23-Nov. 21)** — Today is an 8 — You wake up with creative ideas for household projects. Make a list of what you need and pick it up on the way home. Test a new recipe today.

**Sagittarius (Nov. 22-Dec. 21)** — Today is a 6 — Most of your energy goes into independent thinking, writing and vision. An associate listens and critiques in a most helpful way. Speculate wildly.

**Capricorn (Dec. 22-Jan. 19)** — Today is an 8 — Imagine yourself stronger than Hercules, wiser than Athena. No need to dwell on the negative. Instead, use your imagination to envision a perfect outcome.

**Aquarius (Jan. 20-Feb. 18)** — Today is a 7 — Choose your vehicle for practical style and durability. You have a long trip ahead, and you'll need more than one means of locomotion.

**Pisces (Feb. 19-March 20)** — Today is a 7 — A coworker feels isolated today. If work demands, this person can close the door and plow through the piles. Bring a cup of tea and a smile.

## JUMBLE

THAT SCRAMBLED WORD GAME  
by Mike Argirion and Jeff Knurek

Unscramble these four Jumbles, one letter to each square, to form four ordinary words.

**LAWRB**

○ ○ ○ ○ ○

©2010 Tribune Media Services, Inc. All Rights Reserved.

**EFING**

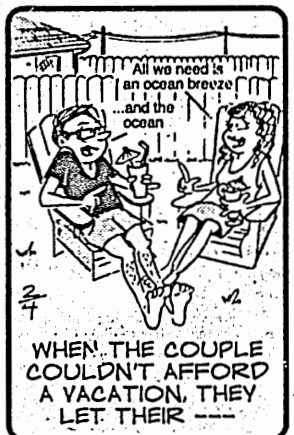
○ ○ ○ ○ ○

**MUDINS**

○ ○ ○ ○ ○

**PAMEND**

○ ○ ○ ○ ○



Now arrange the circled letters to form the surprise answer, as suggested by the above cartoon.

Ans: ○ ○ ○ ○ ○ " ○ ○ ○ ○ ○ "

Wednesday's answers | Jumbles: BASIS TESTY QUAIN STOLID  
Answer: What the wine collector invested in — "LIQUID" ASSETS

# Saluki Insider

Saints quarterback Drew Brees will reportedly get a new contract from New Orleans in the offseason. Brees, who finished second in the MVP voting this season, is the 17th highest paid quarterback in the NFL. Where does he rank among all the quarterbacks?



**STILE T. SMITH**  
stt34@slu.edu

I think he has passed Tom Brady and is the second best quarterback in the league behind Peyton Manning. He has a strong arm and is one of the most accurate signal callers in the league. He will show the league how good he really is when his skills are on the grandest stage of them all in the Super Bowl Sunday.

I would put him second for the season. He definitely deserves a better contract and is better than 17th as far as play goes. He is an exceptional passer and he is a great play caller. I think Peyton Manning, Tom Brady and Ben Roethlisberger are all better overall though.



**RYAN SIMONIN**  
rsiminy@slu.edu



**JEFF ENGELHARDT**  
jengel@slu.edu

Drew Brees is the third best quarterback in the league. Clearly, Brett Favre and Kurt Warner are the top. Wait, Oh, this isn't 1997! Well, he is still No. 3 behind Peyton Manning and Tom Brady and I am sure he will be paid as such. Maybe he can fix that funky thing going on with his hair when he gets his millions.

## BASKETBALL

CONTINUED FROM 12

Teague added eight rebounds to go along with his team-high 16 points, while Booot, sophomore guard Kevin Dillard and Booker joined him in double-digits with 13, 11 and 10 points, respectively.

Teague said his conditioning has also improved, allowing him to be more of a factor.

"(Lowery) kept pushing me, so I just bought into it and got into better shape," Teague said.

Leonard led the way for Missouri State, scoring 29 points, but the Salukis were able to keep him to just nine in the

second half.

The Salukis will take to the court again at 5 p.m. Saturday when they travel to Northern Iowa (20-2, 11-1 MVC) to take on the MVC-leading Panthers.

Stile T. Smith can be reached at stt34@slu.edu or 536-3311 ext. 256.

## MEN'S BASKETBALL

# Teague, Booker propel Salukis to close victory

**RAY MCGILLIS**  
Daily Egyptian

Just one game removed from its second-lowest offensive output on the year, the SIU men's basketball team found success beneath the basket.

The team surrendered 40 points inside the painted area in its previous loss to Wichita State, but the Salukis were able to right the ship and win the battle between the blocks against Missouri State (15-8, 5-7 Missouri Valley Conference).

The Salukis (13-9, 5-7 MVC) weathered an early storm put on by Missouri State's junior guard Adam Leonard, who went 5-6 from beyond the arc and scored 20 of his 29 points in the first half alone, to pick up the close 73-67 come-from-behind win.

SIU trailed for the majority of the game, but a second-half offensive surge propelled the Salukis passed the league's top scoring

offense.

Head coach Chris Lowery said the Salukis were able to walk away with the victory because their willingness to push the ball into the post.

"We went inside today to close them out," Lowery said. "Bad shots were never an issue today. When we didn't push the ball in transition we made sure all our bigs got touches."

SIU outscored the Bears in the post 24-20 on the game.

Freshman center Gene Teague set the tone for the rest of the team in the post and scored 12 of his 16 points in the painted area while ripping down eight boards.

Missouri State head coach Cuonzo Martin said the Bears wanted to make Teague work for his points down low and force him into tough shots.

"(Teague) did a good job of getting low," Martin said. "And he shot 4-7 from the free-throw line, that's pretty good."

Sophomore forward Anthony Booker came off the bench and helped lead the second-half charge for the Salukis after going scoreless in the opening 20 minutes.

Booker finished the game with 10 points and four rebounds. Teague said scoring opportunities are created when he and Booker are on the floor at the same time.

"Book(er) is also a threat down low so I know if me and him are in the game, if they double me I'm going to look for him immediately because I know he's going to score every time," Teague said. "We knew we needed this win so we knew we had to do whatever it took to win."

The Saluki's next game will be at 5 p.m. Saturday as the men travel to play Northern Iowa.

Ray McGillis can be reached at ray1021jr@slu.edu or 536-3311 ext. 269.

## Murder Mystery Theatre presents

# An Addams Family Affair

A Participatory Murder Mystery

Friday, February 12, 2010

Dinner at 7:00 pm  
SIUC Student Center  
Renaissance Room

## Menu

- Cranberry & Mandarin Spinach Salad
- Chicken w/ Herb Crust & Mango Peach Salsa
- Farfalle Gaspacho Pasta (Vegetarian)
- Steamed Fresh Vegetable Medley
- Parsley Buttered Red Potatoes
- Rolls & Butter
- Chocolate Sacher Torte
- Fresh Fruit Sataw w/ Honey Orange Syrup
- Iced Tea & Coffee



Tickets are available for purchase by phone (453-3478) or at the Central Ticket Office located on the 2nd floor of the Student Center Monday - Friday, 8:00 am to 4:00 pm.  
For more information visit [www.slucstudentcenter.org](http://www.slucstudentcenter.org) or call 453-1142.



Student Center  
Southern Illinois University Carbondale

## Smokers Needed!

### Earn \$150\* in a Non-Quit Smoking Study!



Jamie: 453-3561  
Email: [jamierad@slu.edu](mailto:jamierad@slu.edu)

- ✓ 4 Sessions in Length
- ✓ 10 hours of time

\*Program acceptance depends on successful completion  
\*Payment depends on completion

Located on the SIUC Campus  
Director: David G. Gilbert, PhD

[www.pinchpennypub.com](http://www.pinchpennypub.com)  
(618) 549-3348 • 700 E. Grand Ave. • Carbondale, IL

**ULTIMATE LED ZEPPELIN EXPERIENCE**

Friday  
 **TRIPPIN' BILLIES**  
DAVE MATTHEWS TRIBUTE BAND

Saturday  
 **U7PR**  
Under The Radar

**Voices**  
let yours be heard today

MEN'S BASKETBALL

## Dawgs come back to beat Bears

Teague scores career-high 16 points in win

STILE T. SMITH  
Daily Egyptian

The SIU men's basketball team picked up a much-needed victory Wednesday, taking down Missouri State 73-67.

Junior forward Carlton Fay knocked down a 3-pointer with 6:11 remaining to give SIU a 60-59 lead and the Salukis (13-9, 5-7 Missouri Valley Conference) held on tight the rest of the way to snap a two-game skid.

Saluki head coach Chris Lowery said the key to the victory was getting the ball to the post, where freshman center Gene Teague scored 16 points and sophomore forward Anthony Booker added 10, all in the second half.

"Our effort was definitely there in the second half," Lowery said. "Bad shots weren't an issue today."

The Bears (15-8, 5-7 MVC) would maintain a one to six point lead through the first eight minutes of the second half, but the Salukis would respond. Down 45-39 with 14:39 remaining, the Salukis went on an 8-0 run capped off by 3-pointers from junior guard Justin Bocot and Fay to take a 47-45 lead with 12:51 left in the game.

Missouri State would come right back, however, and go on a 7-0 run of its own to take a 52-47 lead with 10:49 left.

But the Salukis would keep the Bears close until Fay knocked down

the 3-pointer to give them the final go-ahead basket.

Lowery said the team took a big step forward against Missouri State, and he has seen a big improvement since the beginning of the season.

"We're better now than when we won six in a row," Lowery said. "Now we're guarding better and giving ourselves a chance."

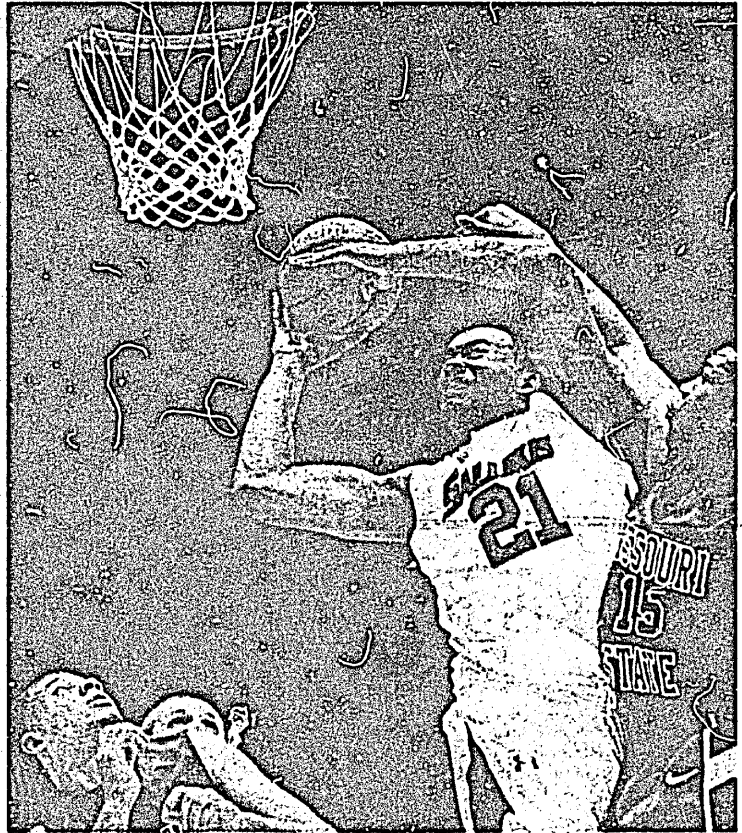
Down 20-18 with 6:58 left in the first half, Missouri State went on a 7-0 run to take a 25-20 lead with 5:14 left in the half.

The Bears would maintain the lead throughout the half, going up by as many as seven points before junior guard Justin Bocot was able to hit a 3-pointer near the end of the half to bring the score to 37-33.

The Salukis had trouble guarding Missouri State junior guard Adam Leonard in the first half. Leonard scored 20 points on 7-8 shooting including 5-6 from three.

Missouri State head coach Cuzonzo Martin said Leonard played well both offensively, scoring 29 points, and defensively in holding Saluki senior guard Tony Freeman to just six points.

"I thought he did a really good job just being in the flow of the game, being a competitor, being aggressive, making big shots and just taking what the defense gave him," Martin said.



PAT SUTPHIN | DAILY EGYPTIAN

Saluki freshman center Gene Teague goes up for a shot while being guarded by Missouri State junior guard/forward Jermaine Mallett during the Salukis victory Wednesday at the SIU Arena. Teague scored a career-high 16 points while grabbing eight rebounds in the win.

Please see BASKETBALL | 11

FOOTBALL

## Lennon unveils 2010 recruiting class

Class heavy on O-linemen, linebackers and secondary

STILE T. SMITH  
Daily Egyptian

Head coach Dale Lennon announced the future of SIU football at a press conference Wednesday.

Lennon introduced the Salukis' 2010 recruiting class. The class featured 21 players: 10 offensive, 10 defensive and a punter.

Lennon said the coaching staff focused its efforts on offensive linemen, linebackers and the secondary.

"We wanted to make a strong emphasis in those positions, and with the recruiting class I felt we met those needs," Lennon said.

The Salukis lost two key linebackers to graduation, Brandin Jordan and Chauncey Milton, and have four new linebackers coming in.

Included in the recruiting class was Carbondale Community High School running back Kendall Edwards, who will be joining the team as a walk-on.

Lennon said the recruiting of local talent is always an important aspect of the team's makeup.

"If you look at our current football team, we've got a good local presence with a lot of players from the area," Lennon said. "That's something I'll continue to build upon."

Lennon said Edwards rushed for 444 yards in one game during his senior season, an amount many players don't reach in their entire careers.

While Lennon said he is a big believer of redshirting players to help

them develop, one player who could make an immediate impact is running back LaSteven McKinney from Nazareth Academy in Broadview.

"He's good," Lennon said. "I want him coming into pre-fall camp with the attitude that I can play and I can play now. That's something I'm looking forward to seeing."

McKinney was ranked as the 41st top prospect in Illinois and as a three-star prospect by Rivals.com. As a senior, the 5-foot-9-inch, 166-pound back ran for 950 yards and 17 touchdowns.

The Salukis were also able to bring in a punter to replace the departing Scott Ravaneti by recruiting Austin

Pucylowski from Catholic Memorial High School in New Berlin, Wis., to handle the punting duties.

Kerry Gibson, a 6-foot-2-inch-185-pound quarterback from Hazelwood Central High School in Florissant Mo., was the Salukis lone quarterback recruit. Gibson passed for 2,080 yards and 17 touchdowns while rushing for 868 yards and 12 touchdowns as a senior, being named the 2009 Missouri Class 6A Offensive Player of the Year.

The Salukis also brought in a couple relatives of current and former members of the team. Offensive tackle Corey Boemen, from Lindbergh High School in St. Louis, is a cousin

to current Saluki Boemer.

Meanwhile, Boo Rodgers, a safety from Webb City High School in Webb City, Mo., will replace his brother, Marty Rodgers, who finished his playing career with the Salukis last season.

"He is a lot like his brother," Lennon said. "He's a player and we're excited to have him with us."

Lennon said the Salukis would continue to recruit for next season, and they are still looking for a nose tackle.

Stile T. Smith can be reached at stis34@siu.edu or 536-3311 ext. 256.