

10-31-1964

# The Daily Egyptian, October 31, 1964

Daily Egyptian Staff

Follow this and additional works at: [http://opensiuc.lib.siu.edu/de\\_October1964](http://opensiuc.lib.siu.edu/de_October1964)

Volume 46, Issue 30

---

## Recommended Citation

, "The Daily Egyptian, October 31, 1964." (Oct 1964).

This Article is brought to you for free and open access by the Daily Egyptian 1964 at OpenSIUC. It has been accepted for inclusion in October 1964 by an authorized administrator of OpenSIUC. For more information, please contact [opensiuc@lib.siu.edu](mailto:opensiuc@lib.siu.edu).



*Her Royal Highness - Queen Cheryl*

*Photo By Jim Strawser*

# VARSAITY

LAST TIMES TODAY

"A handsome, impressive film!"—*Newsweek*

COLLEGE PICTURES presents • FRED ZINNEMANN produces

GREGORY ANTHONY OMAR  
PECK • QUINN • SHARIF



## BEHOLD A PALE HORSE

SUNDAY - MONDAY - TUESDAY - WEDNESDAY

unthinkable to miss  
the **Unsinkable**  
**MOLLY BROWN**

DEBBIE REYNOLDS • HARVE PRESNEL

COLOR

# VARSAITY LATE SHOW

ONE TIME ONLY TONITE AT 11:00 P.M.

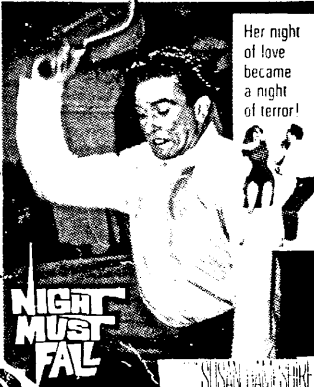
BOX OFFICE OPENS 10:15

ALL SEATS \$1.00

## ALBERT FINNEY

"A Classic Horror Movie!  
Bone chilling."—LIFE MAG.

the  
lusty  
brawling  
star  
of  
"Tom  
Jones"  
goes  
psycho  
in



Her night  
of love  
became  
a night  
of terror!

NIGHT  
MUST  
FALL

SUSAN YOUNG OF "THE  
MIDWINTER GARDEN" STARRS  
"NIGHT MUST FALL" WITH  
ALBERT FINNEY • GUY WENDELL •  
L. L. GREEN • JOHN WATSON • HARVE PRESNEL

### Queens, Yes, But . . .

# 'A King, My Kingdom for a King,' Should Be Lament of SIU Coeds

By Alice Cartright

The king is missing!  
All interested coeds should  
organize a search party before  
Homecoming activities get  
into full swing.

This is how an advertise-  
ment for the 1964-65 Home-  
coming might read if girls  
were to assert their rights.

All through Homecoming  
histories, queens have reigned  
over the affairs. Sweet, cute  
and intelligent girls have been  
named queen by admiring  
males.

What is the coed supposed  
to do while her boy friend  
puts a "kink" in his neck,  
twisting it this way and  
swiveling it that way just to  
"droot" over the Homecoming  
queen candidates?

The coed should have a  
chance to participate in this  
"drooting" too. What with all  
the strong, handsome, debon-  
nair males on campus, why  
shouldn't the girls be allowed  
the excitement of picking from  
one of these All-American  
types, a king for Homecoming?

As the tradition for Home-  
coming now stands, the queen  
must be escorted by a big  
"burly" football player whom  
most SIU coeds know little or  
nothing about.

In 1922, the year of South-  
ern's first Homecoming  
pageantry, Edward Zeiler  
reigned as king with his queen  
Mary Van Sickle. Both rode  
in a place of prominence in  
the parade so that all of their  
admirers had a chance to see  
them in person.

There seemed to be no more  
evidence of another king how-  
ever, until 1954. At this time  
a mysteriously cloaked figure  
"made the campus scene"  
for the Homecoming. He was  
introduced as King Menes to  
the new queen Ann Travel-  
stead.

At this time it was rumored  
that King Menes had re-  
appeared after 5,000 years to

oversee the activities of his  
ancient Egyptian realm.

History lists a King Menes  
the Thinite, reported founder  
of Egypt's first dynasty about  
3,000 B.C. He was an upper  
Egyptian, as indicated by the  
white on his crown, who in-  
vaded and subdued the people  
of the Delta. The Delta was  
lower Egypt and is repre-  
sented by the red on his crown.

Uniting the two parts of his  
country, he founded the long  
line of its ancient kings. Who  
knows, perhaps one of his  
ancestors is attending South-  
ern for the sole purpose of

becoming the coeds' hero in  
the form of a Homecoming  
king.

According to the Nov. 4,  
1955, issue of the Egyptian,  
King Menes is portrayed each  
year by an SIU faculty mem-  
ber whose identity is kept  
secret. The coronation is his  
only appearance of the year.

Although the Homecoming  
has a king, it lacks the ex-  
citement because the coeds  
have no part in selecting the  
one who will be king.

SIU coeds arise! Your rights  
are being denied. Now is the  
time to find a suitable male  
head to crown.



HOMECOMING PARADE, 1927 STYLE

## Homecoming Activities

Saturday

- 9 a.m.  
Homecoming parade begins.
- 11 a.m.  
Buffet in the Roman Room of the University Center.
- 1:30 p.m.  
SIU vs. North Texas State in McAndrew Stadium.
- 6:30 and 8:30 p.m.  
Movie Hour: "Many Rivers to Cross" in Furr Auditorium.

- 8 p.m.  
Symphony Concert at Shryock Auditorium.
- 8 p.m.  
Southern Players will present "The Boy Friend" in the Playhouse.
- 9 p.m.  
Pete Palmer's Orchestra will play at the Homecoming Dance in the Ballroom of the University Center.

Sunday

- 4 p.m.  
Concert in Shryock Auditorium.
- 8 p.m.  
"The Boy Friend" will be presented by the Southern Players in the Playhouse.

# WELCOME HOME SIU



Students - Faculty - Alumni

We take this opportunity to wish  
you all the success you need in  
order to make this one  
**THE BIG YEAR**

## GOSS

HOME FURNISHINGS  
309 S. ILLINOIS

Your one-stop, downtown shopping  
center for TV, stereo, appliances,  
gits, furniture.

Where you're always welcome

We Service Everything We Sell



Menu	MED. LARGE	LARGE	MED. LARGE	LARGE	
CHEESE OR ONION	\$1.25	\$1.75	BACON	\$1.50	\$2.25
JIM'S SPECIAL	1.50	2.25	GREEN PEPPER	1.50	2.25
SAUSAGE	1.50	2.25	MUSHROOM	1.50	2.25
PEPPERONI	1.50	2.25	TUNA FISH	1.50	2.25
BEEF	1.50	2.25	SHRIMP	1.50	2.25
FRIDAY SPECIAL	1.25	2.25	ANCHOVIES	1.50	2.25
KOSHER SALAMI	1.50	2.25	HOUSE SPECIAL	2.25	3.25

## JIM'S PIZZA PALACE

OPEN 4:00 - 1:00 SUN. THRU THURS.  
FRI. & SAT. TILL 2:00 A.M.

519 So. ILL.

PHONE 549-3324



CHERYL SCHNITZMEYER IS CROWNED QUEEN OF THE 1964 HOMECOMING FESTIVITIES IN GALA PROCEEDINGS AT SHRYOCK AUDITORIUM.

(Photo By Jim Strawser)

With 24 Floats

## Bands, Parade Competition Kick Off Homecoming Today

The Marching Salukis and 31 high school bands will kick off SIU's big Homecoming celebration today as they march in the 1964 Homecoming parade at 9 a.m.

Homecoming queen Cheryl Schnitzmeyer, her court, Diane C. Blakemore, Junius M. Gee, Karen D. Tumbleson and Linda K. Wood, and attendants, Linda Thornburg and Carol Grigg, will lend a touch of beauty to the parade.

Also in the parade will be 24 floats and 20 stunts prepared by various organizations and living units. "Southern Goes Western" is the theme of this year's Homecoming. The floats, stunts and 23 groups participating in the house decoration contest will seek to interpret this theme.

High school bands providing music for the Homecoming parade will be from the Enfield Community, Rosiclare Community, Mascoutah Community, and Shawnee Community.

Centralia, University School, Triad Community, Trico Community, DuQuoin Township, Cartersville, Westlin School, Trenton, Carmi Township, and Valmeyer.

Cairo, Carbondale Community, Eldorado, Anna-Jonesboro Community, Marion, Carlyle and Columbia.

Christopher Community, Flora, Johnson City, Benton Consolidated, Madison, Venice, Herrin, Freeburg Community, St. Elmo Community, and Harrisburg.

Float entries are divided into men's, women's and organization divisions.

Men's division: Phi Sigma Kappa, Delta Chi, Sigma Pi, Tau Kappa Epsilon, Phi Kappa Tau, Theta Xi, University City, Washington Square Dorm, Ptolemy Towers and Bacchus' Abode.

Two groups entered in the women's division are Delta Zeta and Sigma Sigma Sigma.

Organization division: Suburban Dorm and Egyptian

Dorm, Women Manor and Forest Hall, Alpha Kappa Psi, Little Egypt Agriculture Co-op and School of Technology.

Saluki Hall and Saluki Arms, Southern Acres Executive Council, Forestry Club, Epsilon Tau Sigma, Irwin's House, and Phi Sigma Phi.

The 20 groups entered in the stunt category are also divided into men's women's and organization divisions.

Men's division: Phi Sigma Kappa, Sigma Pi, Phi Kappa Tau, Delta Chi Pledge Class, Theta Xi, The Foresters, University City, Playboy Hall, El Mahal, and The Pantheon.

Four groups are entered in the women's division. They are: Bowyer Hall, Baldwin Hall, Sigma Kappa, and Alpha Gamma Delta.

In the organization division, six groups are entered: Alpha Kappa Psi, SIU Sport Parachute Club, Arnold Air Society and Angle Flight, Sigma Beta Gamma, Phi Sigma Phi and the Home Economics Club.

Winners in the various float and stunt divisions will be announced during the Homecoming football game.

The 23 groups participating in house decorations will be judged in four categories: organizations (single groups), men (single groups), women (single groups) and combined groups.

Single groups in the organizations category are Gamma Delta, Mason-Dixon, and Wesley Foundation.

Men's single groups: Bailey Hall, The Chateau, Col-

lege View Dorm, Hays Street Dorm, Shawnee House, University City and Valhalla Dormitory.

The six entrants in the women's single groups decorations are: The 805, Group Housing 115, Jewel Box, La Casita Dorm, Six-Hundred Freeman, and Woody Hall.

Combined groups: Baldwin and Abbott halls, Johnson Hall and Doyle Dorm, Kellogg and Felts halls, La Casa Manana and Pierce and Bowyer halls, Smith and Warren halls and Steagall and Brown halls.

Entrants in the four house decoration categories were judged Friday night and winners will be announced during the Homecoming game.

### SIU Republican Group

#### To See Sharon Percy

Members of the SIU Collegians for Percy will greet Sharon Percy, daughter of Charles H. Percy, Republican candidate for governor, at 1:30 p.m. Monday when she visits the Jackson County Courthouse in Murphysboro.

### DAILY EGYPTIAN

Published in the Department of Journalism daily except Sunday and Monday during fall, winter, spring, and eight-week summer term except during University vacation periods, examination weeks, and legal holidays by Southern Illinois University, Carbondale, Illinois. Published on Tuesday and Friday of each week for the final three weeks of the twelve-week summer term. Second class postage paid at the Carbondale Post Office under the act of March 3, 1879.

Officers of the Egyptian are the responsibility of the editors. Statements published here do not necessarily reflect the opinion of the administration or any department of the University.

Editor, Walter Waschuck, Fiscal Officer, Howard R. Long. Editorial and business offices located in Building T-48. Phone: 453-2354.



"Dedicated to Serve the Traditional Dresser"

Go Salukis Go!



OPEN 9 TO 9 SIX DAYS A WEEK

The Squire Shop Ltd

Suitors for Gentlemen

NEXT DOOR TO WOOLWORTH'S IN Murdale Shopping Center

## Let's Go Salukis!

Come in and see us sometime for your shoe needs.

## Quality and Style

at prices that will amaze you.

Sandy's

MURDALE SHOPPING CENTER

USE YOUR ST. CLAIR CHARGE

NO PARKING PROBLEM

## Sudsy Dudsy

self-service laundry



WASH 20¢

DRY 10¢

DRY-CLEANING

8lbs. - \$1.50

UNIVERSITY PLAZA

News in Perspective

# Democrats Look to '36, GOP to '48 in Finale

## Republican Hopes Based on 'Silent' Citizen

By Jack Harrison

The Democrats are talking about 1936 and the Republicans about 1948 as the current campaign nears a frenzied finale.

In 1936 Franklin D. Roosevelt carried every state but Maine and Vermont. Lyndon Johnson is hoping for a similar landslide next Tuesday.

In 1948 the pollsters were wrong, as Harry Truman came from behind to defeat a confident Tom Dewey. And in 1964, Barry Goldwater will win only if the polls again are far off the mark.

The professional poll-takers say they have corrected the ills of 1948 and they are willing to stake their reputations on this year's forecast.

The Gallup Poll this week an-

nounced that the nation's voters are aligned 64 per cent for Johnson, 29 per cent for Goldwater and seven per cent undecided. No candidate since the dawn of the Polling Age has enjoyed such a lead so late in the campaign.

In that famous FDR victory of 1936, the incumbent President got 60.8 per cent of the votes. A landslide for Warren G. Harding in 1920 showed the Republican winner with 60.4 per cent. In a modern-day "landslide," that of Dwight D. Eisenhower in 1957, the winning total was 57.4 per cent.

Apparently only a catastrophe (or a miracle, depending upon your point of view) can prevent the election of Lyndon Johnson.

John Bailey, Democratic national chairman, predicted this week that Johnson will carry 47 of the 50 states. He concedes Alabama and Mississippi and says there is a third state that might be lost.

The Republicans rest their hopes on a "silent vote" and a huge

turnout they hope to achieve through intensive work at the grassroots level between now and the closing of the polls Tuesday evening.

Both parties are emphasizing get-out-the-vote drives in the final days of the campaign. Republicans usually have a higher percentage turnout than the Democrats.

About 71 to 72 million citizens are expected to cast votes Tuesday. In 1960, the number of voters was 68.8 million. This represented 85.3 per cent of registered voters and 64.3 per cent of the voting-age population. John F. Kennedy won by just 118,500 votes.

The total Tuesday could be held down by apathy over an expected Johnson landslide and by discontent with both candidates.

The Democrats fear that they could lose a number of close states, particularly in the South and the Rocky Mountain area, if they don't get a high turnout of friendly voters.

Local races will swell the ranks of voters in many states. Up for grabs are 35 Senate seats (26 now Democratic and nine Republican), the entire 435 seats in the House of Representatives, 25 governorships (18 now Democratic and seven Republican), several hundred state executive offices and nearly 7,000 seats in state legislatures.

It has been an expensive campaign. Total campaign expenditures this year have been estimated at \$200 million. This excludes the value of campaign work not paid for. The corresponding figure in 1960 was \$175 million, and in 1956 it was \$140 million.

Much ticket-splitting is expected. The Republican presidential nominee will run behind his party's total in several areas, according to party workers.



Le Petley, Christian Science Monitor

THE DAWN COMING UP LIKE THUNDER



Shoemaker, Chicago's American

'BOY, DO WE HATE POLITICS!'



Here Ficklen, Dallas Morning News

AT LEAST WE CAN VOTE

# Meeting of Red Bloc Not Likely to Heal Split With Peking

By William L. Ryan  
AP Special Correspondent

A world Communist meeting--with Red China attending--is a probability in the near future. But any attempt to heal the split in the global revolutionary movement seems headed for failure. The new Soviet regime in all likelihood will be unwilling and unable to pay Peking's high price for peace.

Nikita Khrushchev's scalp was only the first installment the Chinese Communists demand for muzzling Communism's internal warfare.

Khrushchev's successors--party

chief Leonid I. Brezhnev and Premier Alexei N. Kosygin--seem anxious to mute the noisy criticism from Red China and its allies. But if they are going to get anywhere, they must eventually show a tougher policy toward the United States and even risk new tensions.

It is doubtful the new regime wants to alarm the Soviet people with a prospect of a turn backward toward Stalinism. It does not want to alarm the European Communist satellites, which have had a faint taste of independence. It does not want to alarm West European Communists, whose only prospects for gains lie in lulling the opposition.

Khrushchev's successors claim to support his policies of peaceful coexistence and higher living standards at home. At the same time they claim to stand for restoring world Communist unity.

Brezhnev and Kosygin cannot have all these things. The best they can hope for is a lull in the wordy

battle with Peking. A lull is in effect now. Since Khrushchev's fall the Soviet press and the Red Chinese have been silent about differences with Moscow. But the aloof Chinese are watching and waiting developments.

The Chinese Communists seem interested now in a meeting with Moscow. They had rejected Khrush-

chev's call for a preparatory meeting Dec. 15 intended to lead to a world conference of 90 parties in mid-1965, but things have changed.

A conference, now likely, would be welcomed by Peking, anxious to probe Soviet intentions and seek tokens from Moscow that it has mended its ways.

## 'Hot Line' to Moscow Stands Idle

By John M. Hightower  
AP Special Correspondent

WASHINGTON--The Washington-Moscow "hot line" has stood idle while President Johnson exchanged messages with the new leaders of the Soviet Union.

This may come as a surprise to many people who, judging by inquiries about the hot line operation, apparently have the impression that it is a regular channel of communications between the White House and the Kremlin.

U.S. officials say, however, that in fact the line has never been used for substantial exchanges of views between the American and Soviet governments. The reason is that when it was opened Aug. 31, 1963, both governments had already reached agreement that it would be employed only in times of crisis.

The hot line, which is tested every day, is actually two telegraph circuits that can readily handle messages in both directions.

Theoretically if the hot line had to be used in the near future, Premier Alexei N. Kosygin would be the man at the other end, since he is the head of the Soviet government.

## However, the real power in Moscow is traditionally in the hands of the first secretary of the Communist party, a position taken over two weeks ago by Leonid Brezhnev upon Khrushchev's removal.

For this reason officials here have sometimes asked in recent days: "Who would be at the other end of the hot line?"



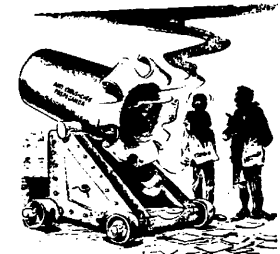
Valzman, Hartford Times

'HELLO... HELLO... WHO'S ON THE OTHER END?'



Sanders, Kansas City Star

'ROCK-A-BYE BABY, OUT ON A LIMB: LET'S STILL PRETEND THAT WE DON'T SEE HIM.'



Payne, Charlotte Observer

'IT ALWAYS WORKED BEFORE'

# Weekend Activities Guide

## Saturday

The annual Homecoming Parade will move down University Avenue beginning at 9 a.m. Instructional Materials Club will have a Homecoming Tea from 8 a.m. to noon in the Morris Library Lounge. Tickets for the Homecoming Football Game will be on sale from 8 a.m. to noon in Room H of the University Center. Homecoming Parade judges will meet at 10:30 a.m. in Room E of the University Center. WRA will sponsor a Homecoming Hockey Game at the Park Street Field beginning at 8 a.m. Women's Recreational Association will have a Homecoming Brunch at 10:30 a.m. in the Women's Gymnasium. Thompson Point will have a Coffee and Doughnut Hour after the Homecoming Parade. Home Economics Club will have an Alumni Coffee from 9 a.m. to noon in the Home Economics Family Living Lounge. Homecoming Football Game: SIU vs. North Texas State University beginning at 1:30 p.m. in McAndrew Stadium. Homecoming Symphony Concert begins at 8 p.m. in Shryock Auditorium. Homecoming Dance will begin at 9 p.m. in the University Ballroom. The Southern Players will present "The Boy Friend" at 8 p.m. in the Southern Playhouse. Movie Hour will feature "Many Rivers to Cross" at 6:30 and 8:30 p.m. in Furr Auditorium. Savant Films will present "The Snake Pit" at 8 p.m. in Browne Auditorium. Journalism Students Association will have a Coffee Hour from 4 to 6 p.m. in the Agriculture Seminar Room. Kappa Delta Pi will have a Coffee Hour after the football game in the Mississippi Room, University Center. Sigma Beta Gamma will have an Alumni reception from 4 to 6 p.m. in the Home Economics Family Living Lounge. There will be a Hootenanny at 9:30 p.m. in Shryock Auditorium.

## Sunday

"The Window" is the film feature for this Sunday at 6:30 and 8:30 p.m. in Morris Library Auditorium. Peace Corps Week begins. Co-recreational swimming from 1 to 5 p.m. in the University School Pool. Intramural Athletics will be going on at all the playing fields from 4 to 6 p.m. "Observation of a Sculpture" is the topic for the Creative Insights Program at 7 p.m. in the University Center Gallery Lounge.

### Club Will Present Film About Poverty

"The Captive," a film about Mark Miller, campus ministry intern at SCF said the Student Christian Foundation only charge is 50 cents for the meal. at 5:30 p.m. Sunday.

"Report on the European Press" by Dr. Howard R. Long, chairman of the Department of Journalism, is the topic for the Sunday Seminar at 8:30 p.m. in Activities Area A of the University Center. The Sunday Concert will begin at 4 p.m. in Shryock Auditorium. Chess Club will meet from 6 to 9 p.m. in the Olympic Room of the University Center. Rifle Club will meet at 1:30 p.m. in Old Main. Southern Players will have a rehearsal from 2 to 5 p.m. and from 7:15 to 10 p.m. in Room 304 of Old Main. The Mr. and Mrs. John Russell Mitchell Art Gallery will sponsor a reception for Fairfield Porter from 1 to 6 p.m. in the Home Economics Building. The paintings of Fairfield Porter will be on display from 1 to 6 p.m. in the Mr. and Mrs. John Russell Mitchell Art Gallery in the Home Economics Building.

## Monday

Women's Recreational Association will play hockey at 4 p.m. on the Park Street Field. The WRA Badminton Club will meet at 7:30 in the Women's Gymnasium. Peace Corps Week will continue through Nov. 7. Obelisk will take organization pictures from 6 to 10 p.m. in the Agriculture Arena. Intramural Athletics will be going on at all the playing fields from 4 to 6 p.m. Housing Staff will meet at 2 p.m. in Room E of the University Center. Inter-Varsity Christian Fellowship will meet at 7 p.m. in Room D of the University Center. Alpha Phi Omega will meet at 9 p.m. in Rooms 101 and 122 and in the Family Living Lounge of the Home Economics Building. The Judo Club will meet at 5 p.m. in the Arena concourse. Inter-Varsity Christian Fellowship will meet at 11 a.m. in Room B of the University Center. Interpreters Theater will have a rehearsal at 6:30 in the Studio Theatre. Intramural Athletics will sponsor weight lifting and conditioning daily from 8 a.m. to 10 p.m. The Jewish Students Association will meet at 8 p.m. in Room E of the University Center. Xi Sigma Pi will meet at 2 p.m. in the Agriculture Seminar Room. There will be a Peace Corps meeting at 8 a.m. in Rooms F and H of the University Center. The Southern Players will have a rehearsal at 7:15 p.m. in Room 304 of Old Main. The African Studies Committee will sponsor a lecture at 7:30 p.m. in Morris Library Auditorium. University Galleries will sponsor a public lecture by Fairfield Porter at 8 p.m. in Davis Auditorium.



ANN SPURBECK



CAROL VAN BRONKHORST

## Recital in Shryock to Present Combined Talent of 4 Women

Three faculty wives and a female member of the music faculty will be presented in a guest recital at 4 p.m. Sunday in Shryock Auditorium. The participants are Ann Spurbek, violinist, wife of Peter Spurbek, instructor in music; Carol van Bronkhorst, flutist, wife of Warren van Bronkhorst, associate professor of music; Frances Bedford, pianist, wife of Emmett Bedford, instructor in journalism, and Mary Jane Grizzell (Mrs. Leland Grizzell), pianist, lecturer in music. Mrs. Spurbek and Mrs. Bedford will open the program with Kreisler's "Prelude and Allegro," followed by Mrs. Spurbek's performance of Bach's Sonata in G Minor for Unaccompanied Violin.

Following the intermission, Mrs. van Bronkhorst and Mrs. Grizzell will offer three numbers, Marcello's "Sonata in F Major," Dutilleux' "Sonatine" and "Ballade" by Martin. The public is invited.

## Notice!

For your convenience

## ITALIAN VILLAGE

will open at 11 am on Sat., Oct. 31

PIZZA SPAGHETTI ITALIAN BEEF are our specialties

405 S. WASH. PH. 457-6559

**GUARANTEED SERVICE ON Televisions and Stereos GOSS**

309 S. Illinois Dial 457-7272

## Welcome Alumni

Stop in And See Us At

# Kay's

As you remember, we were and are still the First in Fashion

106 S. ILLINOIS



Let Us Give You That "Old Black Magic" Feeling With a Smart, New, Homecoming Hairdo.

Varsity Hair Fashions

A TRADITION WITH SIU COEDS

**WELCOME**  
**S.I.U.**

Students-Faculty-Alumni



457 - 2985  
for  
reservations

- ... Steaks
- ... Sea Foods
- ... Italian Foods
- ... Sandwiches & Plate Lunches

... catering to parties, banquets & receptions. Open from noon until midnight.

**Little Brown Jug**  
**Steak House**

119 North Washington

Associated Press News Roundup

# Goldwater Slams Democrat 'Circus'

CHEYENNE, Wyo. -- Sen. Barry Goldwater told a wind-whipped rally on the Old Frontier Friday that President Johnson is hunting votes with "a circus and a sideshow," and letting the free world fall apart while U.S. prestige sinks.

A Cheyenne Airport turnout, waving signs with slogans like "Give 'em Hell, Barry," heard the Republican presidential nominee indict Johnson's foreign policy, saying it had "failed, failed, failed."

Somebody in the crowd hurled an egg as Goldwater climbed to the rostrum, but it soared over the platform and smashed on the runway behind.

Police estimated the crowd at 8,000.

Goldwater said the Democrats have blocked Republican efforts to solve the problems posed to cattlemen by beef imports. He promised a Re-

publican administration would act to "give the beef growers a fair shake."

Goldwater charged that Johnson's foreign policy has lost Turkey as a U.S. ally. He said France seeks new trade ties with the Soviet Union while Great Britain's new Labor government ponders U.S. nuclear deterrent policies.

He drew a cheer when he declared that Johnson is an interim president who "does nothing, debates nothing and determines nothing."

"I believe that unless we keep our military strength high," he said, "that we are doomed for a third world war."

Goldwater said Johnson is letting that strength slip.

And the Communist world, said Goldwater, is "regrouping under tough new leaders."

Turning his campaign westward, Goldwater said Johnson "has proven to be a President isolated from foreign policy behind a wall of political ambition and behind a wall of political henchmen who care for nothing in the world but their own gains and power."

Goldwater made his accusations at Cheyenne, Wyo., kicking off a campaign day that takes him to Tucson, Ariz., Las Vegas, Nev., and Los Angeles.

"In just the past few days," he said, "while Lyndon Johnson has been trying to reduce American politics to a popularity poll, the Free World has been coming apart at the seams and American prestige has been sinking slowly out of sight."

Goldwater headed west after a final bid for Pennsylvania's 29 electoral votes.

ENTRANCE EXAMINATION



Bruce Shanks, Buffalo Evening News

# Immigration, Peace Themes Emphasized by Johnson

MILWAUKEE -- President Johnson, touring the Midwest, took his campaign to a Polish-American neighborhood here Friday and called for a more liberal immigration law.

Johnson headed for Milwaukee after coming up with a new slogan in a speech at an airport rally in Detroit: "The vote you cast will be your own, and the world you save will be your own."

The President prepared for an audience in Milwaukee's Kosciusko Park a speech in which he said a more liberal immigration law "would permit the re-uniting of families that have too long been broken." He said his aim would be to abolish discriminatory immigration quotas.

Johnson unveiled his phrase on votes in his latest move in a week-long effort to picture himself as the candidate best equipped to preserve peace.

The President, even while emphasizing questions of peace and war in every speech, still seeks opportunities to contrast his views with those of Republican rival Barry Goldwater.

He did this anew Thursday night in Philadelphia, taking issue with Goldwater on the role of clergymen in public affairs.

Addressing a Democratic dinner, Johnson added to his text a challenge to a Goldwater statement questioning the propriety of political en-

dorsements by members of the clergy.

The President said: "I hope the day will never come when any man, for any cause, will try to keep religion out of our national decisions on who shall lead us or the direction we shall go."

A day earlier, in Cedar Rapids, Iowa, Goldwater inserted into one of his campaign speeches a passage in which he questioned whether clergymen could be giving proper attention to problems of morality and, at the same time, be providing Johnson with endorsements.

The President, who never mentioned Goldwater in his remarks, said: "I do not condemn our churches or our clergymen for being concerned that America meet her moral responsibilities for peace, for preserving human freedom and human life, and for doing what a rich nation can and should do to wipe poverty from our land. I not only don't condemn them, I thank God for their courage."

Johnson, in his Detroit text, hit his peace theme again saying: "We must be strong--but never reckless. We must be firm--but never foolish. One reckless impulsive move of a single finger could incinerate our civilization."

"That is what it means to be President of the United States today. That is what is at stake in this election."

*It's a very*  
**BOOT-iful**  
*SEASON*



**\$8.99**

**GEMS**  
YOUNG SHOE FASHIONS

This is the time to really live with your boots on in the happiest fashion to come a girl's way in a long time. Not only are these fun to wear, they're also soft and easy on your feet. Some have toe-cozy linings for cold days.

**THE BOOTERY**  
124 S. ILLINOIS

*"Irene"*



college  
florist

607 S. Illinois 457-6660

*Welcome to Homecoming*  
**1964**

*Now*


is the year to be Romantic... to be Feminine... to wear the fluid curves and gentle flares that make you every inch a lovely lady in your new fall dress.



**The Ruth Church Shop**

Open Monday nights \*till 8:30 p.m. University Plaza No. 3

**ATTRACTIVE FRAMES MAKE AN ATTRACTIVE YOU!**



Smart, Young

Don't take a chance on your sight for vanity's sake. We offer complete glasses, lenses and a selection of hundreds of latest style frames at only **\$9.50**

We also replace lenses while you wait!

**CONRAD OPTICAL**

Across from Varsity Theatre  
Corner 16th and Monroe-Herrin

Replaces Khanh

# Ex-Mayor of Saigon Named New Premier

SAIGON, South Viet Nam-- Tran Van Huong, former mayor of Saigon, was named Friday to succeed Maj. Gen. Nguyen Khanh as premier despite ill health which hampered his work as mayor.

Huong, 60, said he planned to name Dr. Nguyen Luu Vien, Khanh's uncle, as deputy premier and defense minister. His other Cabinet choices were not certain.

offered condolences," Huong said. "But this is a critical period in Vietnamese history, and I have accepted this sacrifice for my nation as a matter of conscience."

A high school teacher, Huong was mayor of Saigon in 1954-55 under the late President Ngo Dinh Diem. He attracted attention by riding to work on a bicycle instead of using a government limousine.

In 1956, Huong became secretary - general of the Vietnamese Red Cross. In 1960, he signed a petition by a group of politicians known as the Caravellists condemning the Diem regime.

Huong was charged with involvement in the attempted Nov. 11, 1960, coup against Diem but was cleared.

After Diem was overthrown last Nov. 1 Huong was named to the short-lived 57-member government advisory group called the Council of Notables. Two months ago, Khanh named him mayor of Saigon. He has held no other public office.

Huong's appointment by the new chief of state, Phan Khắc Sửu, must be confirmed by the 16-member high national council responsible for setting up a new government.

Because of Khanh's relationship to Vien, there could be strong opposition to Vien's being named defense minister. In that post he will have a seat on the powerful four-man national security council, and Khanh is expected to fill one of the other seats as chief of the armed forces.

Vien was interior minister in Khanh's last Cabinet. "I'm not sure whether I should be congratulated or



DEAN BURCH

## Burch Predicts GOP Victory

WASHINGTON -- Republican National Chairman Dean Burch predicted Friday that Sen. Barry Goldwater will pull off a political upset next Tuesday and be elected.

Burch told a news conference he expects Goldwater to carry President Johnson's home state of Texas, make a clean sweep of the South, pick up a couple of border states, win the key states of the Midwest and Far West, and "pull some surprises on the Eastern seaboard."

Burch pictured Ohio, Illinois and Indiana as falling into the Goldwater column. He described California as "up for grabs." Asked about his prediction of surprises in the East, he counseled newsmen "to keep an eye on New Jersey."

He said he based his forecasts in part on door-to-door canvasses.

## Servicemen's Absentee Votes Increase

WASHINGTON--As many as 1.3 million U.S. servicemen may vote by absentee ballot in next Tuesday's presidential election--about 550,000 more than in 1960.

Many ballots already are on their way to polling officials by mail from American military men and their families in the United States and overseas.

## Ole Miss Football Pep Rally Ends With Riot, Five Arrests

OXFORD, Miss.--Five students were arrested Friday after a campus football pep rally flared into violent turmoil at the University of Mississippi.

The uproar combined a panty raid, police stoning and car rolling.

The unoccupied car belonged to Burns Tatum, campus police chief. It was rolled down a hill where it smashed into a fire plug.

No details on the arrests were disclosed immediately.

Pat Smith, a University spokesman, said school authorities were on campus taking names during the ruckus. All those reported will have to face disciplinary action.

The raid began in a good humored vein, but turned bitter as the night wore on. Students peppered police with bricks and bottles. A brick opened a gash on one officer's head.

Flying rocks smashed the windows of Sheriff Bratton's car after he drove on campus.

Six campus police, bolstered by five from Oxford and faculty members, joined to control the students.

The mile-square campus, which adjoins Oxford, was re-

ported quiet by 2:30 a.m. Smith said the panty raids and most of the damage was done by 200 students. Most of the 2,000 originally involved in the uproar melted away when it got ugly, he said.

### Forum to View Movie

Sunday's supper forum at the Wesley Foundation will feature the movie "Raisin in the Sun," starring Sidney Poitier. The film and a discussion will follow the weekly Sunday evening meal scheduled for 5 p.m. in the basement of the Wesley Foundation, 816 Illinois Ave.

## Parisians Say 'No, No' To 'Yeah, Yeah' Movie

PARIS--The Beate movie "A Hard Day's Night" had hard days and nights in Paris.

It was pulled out of the only theater showing it here after four weeks and attendance of only 37,915 while a British mystery film flourished.

**TRAVELING?**  
Let us make reservations and arrangements for you at no extra charge.

**B & A TRAVEL**  
"We do everything but pack your bag."  
Phone 549-1863  
715 S. University

**Homecoming**  
Special . . .  
**PORK SANDWICH**  
fries and shake  
**79¢**  
Good today thru Sunday

**FREE DELIVERY SERVICE**

**7 - 4424**

**We are now serving BREAKFAST**  
Open at 7 A.M.

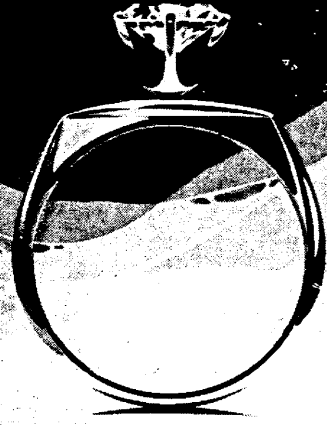
2102 W. Main      Carbondale



**VEATH SPORTS MART**  
SWEATSHIRTS BOWLING SHOES  
HOBBY ITEMS BARBELLS  
718 S. Ill. 'Near the Campus'

*Orange Blossom*

D I A M O N D S



SYMMETRY • FROM \$125

AT THESE FINEST STORES

ILLINOIS

Alton, Goulding's Jewelers  
Barrington, Howard A. Wenzel Jeweler  
Belleville, Syl Fietsan  
Belvidere, Robert B. Lear, Jewely  
Champaign, M.J. Reed, Jeweler  
Chicago, Von Simpa Jewelers  
Chicago, Gee Vee Jewelers  
Crystal Lake, Salmons Jewely  
De Kalb, Ganteman Jewelers  
Elgin, Rouschert & Kubiak  
Freeport, Luecke Jewelers  
Galvo, Lambin Jewelers  
Geneseo, Lambin Jewelers  
Glen Ellyn, Dadds Jewelers  
Joliet, Kiep Jewelers  
La Salle, C.A. Jensen, Jewelers  
Macomb, Arrasmith Jewely  
Moline, Malcolm Jewelers  
Mannouth, Wiley Light Jewelers  
Morris, Wheelers Jewely  
Normal, Eaton Jewely  
Ottawa, Major's Jewelers

Park Ridge, Randahl Jewelers  
Peking, Jones Bros. Jewelers  
Peoria, Moore's Jewelers  
Peoria, Potter & Anderson  
Peoria, Charles A. Schoenheider  
Quincy, Stuhahn, Jewelers  
Princeton, Gunnar E. Pihl, Jewelers  
Rockford, Bolenders  
Rockford, Lindquist Jewelers  
Rock Island, Harry Orr Jeweler  
Skokie, Falkenhay Jewelers  
St. Charles, Matson Jewelers  
Sterling, Gerdes Jewely  
Aurora, Bockman Jewelers  
Bloomington, Sarg's Jewely  
Chicago, Carreau, Inc.  
Chicago, Walter Heurich Jewelers  
Des Plaines, Owen J. Pritchard Jewelers  
Evanston, Gruner Jewely Co.  
Galesburg, Robert Eichorn, Jeweler  
La Grange, Edgar H. Fay, Jewelers  
Lincoln, Charter's Jewely  
Pontiac, Smith's Jewely  
Rockford, Hoffman & Sons  
Washington, Foster Jewely  
Waukegan, O'Dell Jewelers



YELLOWS - ARE - SOUGHT - BY - PEOPLE - OF - THOUGHT

**YELLOW CAB CO., INC.**  
Phone 457-8121

PRESIDENT  
PHILIP M. KIMMEL

CARBONDALE, ILL.

# A-1 Racers at



**The Squire Shop**  
CARBONDALE, ILL.

*it's  
GREAT  
to be  
IN!!*



**A-1 Racers**  
slacks

EXTRA SLIM  
CONTINENTAL STYLING

AT YOUR CAMPUS HEADQUARTERS STORE OR WRITE:

KOTZIN CO. LOS ANGELES 15, CALIF.

### Today May Be Different

## Blondes, Queens and Victories Fail to Blend at Homecoming

By Frank Messersmith

Although blondes may have more fun, and one was elected 1964 Homecoming queen, they're usually losers when it comes to that contest and the related football game.

Until now, it could be said that "only your hairdresser knows," but students and alumni of SIU now have a definite method of learning the truth about blondes.

Since 1928, when Dorothy Benner was Homecoming Queen of SIU, there have been 36 queens, 29 brunettes and seven blondes.

This is where our unscientific method of deduction goes to work.

Every year, with the exception of 1950 and 1960, when there were light-tressed Homecoming Queens, the Saluki football teams have tumbled to defeat.

The exceptions were: a tie in 1950 and a 33-6 victory in 1960.

It is not too clear in the old records, but it seems as though the year they disbanded the football team because of war, there was one of "Them thar fair-haired creatures on the throne."

Evidently, this past record of performance has made an impression on the former blonde queens. All have moved out of Illinois, and all but one have sought to forget the past by getting married.

Just as an incidental note, if you take the interval of years between each of the last four blonde Homecoming Queens, and dial them like a telephone number, you will be connected with the College of Education.

Five of the seven blonde queens were education majors.

The complete background of all the Homecoming Queens of SIU before 1928 is incomplete..

The first Homecoming Queen found listed in the old copies of the Daily Egyptian and Obelisk was Mary Van Sickle in 1922.

Miss Van Sickle had the distinction of being the first Homecoming Queen elected following the re-establishment of the SIU football team.

During the war years, World War I, the Saluki football squad was eliminated for lack of man power.

The score of that first Homecoming game following the war was SIU 0 - Cape Girardeau 0.

SIU also lost in 1925 when the next Homecoming Queen is listed in the memory books. Edna Hampton wore the crown that year, as the Shurtleff eleven shot-down the Salukis, 7 to 0.

The names of the queens between 1925 and 1928 have been lost through the years, but from '28 on, all the queens can be found in the old recorders.

The 1964 Homecoming like all the others, will prove to be a weekend filled with excitement, fun and glamor.

It will also add the names of a new queen and attendants to the won and lost list.

This year there were two blondes and one semi-blonde in the Homecoming queen contest, and one was victorious.

Just what effect that will have on the outcome of today's football game only time will tell.

What will happen at the SIU-North Texas State Game?



**LUCKY** - What kind of luck will blonde Cheryl Schnitzmeyer bring the Salukis today?

## Sports, Opera, Light Music On Tap for Weekend Radio

WSIU Radio will broadcast the Homecoming game with North Texas State at 1:15 today on Saluki Football.

Other highlights:

10 a.m.

From SIU: News, interviews and light conversation, with the popular tunes of the day, from and about Southern.

1 p.m.

Saluki Warm-Up: Sports news and football music before the Homecoming game.

7 p.m.

Guest Star: Features Fran Warren.

7:15 p.m.

Here's to Vets: Features the sons of the pioneers.

8:30 p.m.

Radio Theater: "A Feather to Fly With."

"Blue Beard's Castle" will be the featured opera on Music for a Sunday Evening at 8 p.m.

Judith Hellwig and Edre Koreh star in Bartok's play, which will follow classical selections and quiet music at 6 p.m.

Other highlights:

10 a.m.

Music for a Sunday Morning.

12:45 p.m.

The Church at Work: News reviews from the world of religion.

1 p.m.

Music for a Sunday Afternoon: Light classics, show tunes and operettas.

5 p.m.

The Sunday Show: News summaries from a wide variety of current events, plus music in the popular vein.

*A "Fighting Saluki" is  
just like a horse . . .*



*. . . give him a PIZZA, and  
he'll run a mile.*

# PIZZA KING

719 S. Illinois

457-2919

**With Percy in  
Springfield we'll  
have action  
in Illinois**

**Elect Charles H. Percy  
the Dynamic Republican  
Governor - Nov. 3rd.**

(Paid Political Announcement)

*'Many Things Are Wrong'*

# SIU Educator Urges Students To Question Value Judgments

It would be an easy task to list 25 questions under general headings of individual and group behavior which our society needs to survive, according to an SIU educator.

Claude Coleman, professor of education and director of Southern's Plan A honors program, addressed members of the Illinois Education Association Friday on the possibility of achieving a stable society.

In a prepared text, Coleman decried equating of knowledge to wisdom. He said anyone who has not at some time questioned his values is not educated in a true sense.

"While he is at this business of questioning his own values," Coleman said, "he had better also question community and world values. Obviously a great many things are wrong when so many people are under-fed, under-sheltered and unhappy. Unless you young people want to be-

## Unitarians to Hear Talk by Wieman

Henry N. Wieman, professor of philosophy, will speak at 10:30 a.m. Sunday in the Carbondale Unitarian Church, Elm and University.

His subject, the first in a series of four talks by distinguished speakers, will be "The Idea of God." The series is devoted to exploring concepts of God. The Rev. Harold Marley, formerly of the University of Michigan, now with the Unitarian Fellowship of Evansville, Ind., will be presented next.

come confused and guilt-ridden old folks, you need to find out what things are wrong in our society and correct them," he asserted.

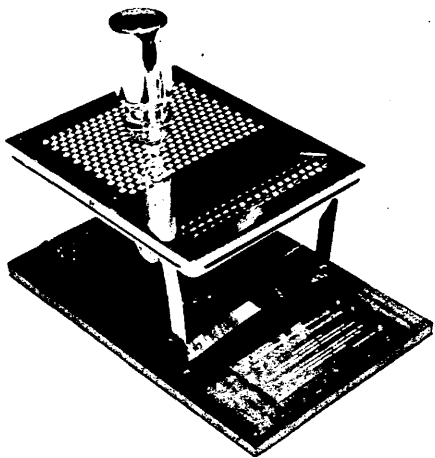
According to Coleman, a successful honors program should lead students to understand that they have an opportunity to question every precept, doubt every axiom, and review every opinion they have ever received from their parents, their ministers, their teachers, their communities and their culture.

Above all, he concluded, students should have more freedom from pressures of other activities, both academic and extra-curricular, which often are so great "they cannot tell the difference

between the status symbol and the real thing."

Others from SIU participating in the conference were: the Rev. Ronald Seibert, director of the Wesley Foundation; Elmer J. Clark, dean of the College of Education; the University Male Glee Club; J. Cary Davis, chairman, Department of Foreign Languages; J.W. Yates, Department of Home Economics Education.

Melvin L. Siener, assistant professor of music; Charles A. Buntin, industrial education; Maycie K. Southall, professor, Department of Elementary Education; and J. Frank Dame, professor, Department of Secretarial and Business Education.



THE GOLD-PLATED MOUSE HOUSE

### Trophy to Ingenuity

## Mouse Finds Room at Top As Morris Gets Gilt Cage

The utmost in mouse prestige and status symbols, a "gold-plated mouse mansion," was unveiled Thursday at a dinner honoring the production of the one-millionth disposable animal cage.

Judging by the annual income of the middle class laboratory mouse, this "gold-plated" house house, valued at several hundreds of dollars, would seem to be the ultimate goal of every devoted American mouse.

The valuable mouse house was presented to President Delyte W. Morris Thursday by Alexander Newman, president of the Lab-Line Instruments, Inc., which manufactures the cages.

The mouse house was an outgrowth of a project began in 1958-1959 by junior design students.

After seeing some student ideas for disposable cages, three SIU faculty members, Isaac Shechmeister, Robert Hunter and Harold Cohen, decided to continue further research into the project.

The three were allocated funds for work on the project, and in the Spring of 1960,

### TV to Show Film Of Parade, Game

The 1964 Homecoming parade at SIU will be shown on film at 7 p.m. Monday on WSIU-TV.

Other highlights:

- 5 p.m. What's New: Life of the antelope and an explanation of gravity and Chinese folk music.
- 6 p.m. Encore: Of People and Politics.
- 8:30 p.m. SIU Football: Film of the Homecoming game with North Texas State.

**ON CAMPUS!**

Imported gifts

**The Museum Shop**

ALTGELD HALL OPEN 9-5

production models of the disposable mouse houses were tested in many leading laboratories throughout the country.

The result of the tests was the marketing of the cages. In June 1961, the SIU Foundation received its first royalty check for \$742.09.

According to a royalty agreement that is included in any project the University sponsors, the royalty is split half-and-half between the SIU Foundation and the three inventors.

The gold mouse house, described by President Morris as "a mouse mansion that any mouse would be proud to live in," will be on display in a University Center trophy case this week.

**WELCOME ALUMNI!**

Be Sure And Visit Carbondale's  
**FINEST**  
Men's Clothing Store

RECENTLY ENLARGED TO SERVE YOU BETTER

*Goldie's*

200 S. Illinois

NEW **Nocturne Star**  
BY **Artcarved**

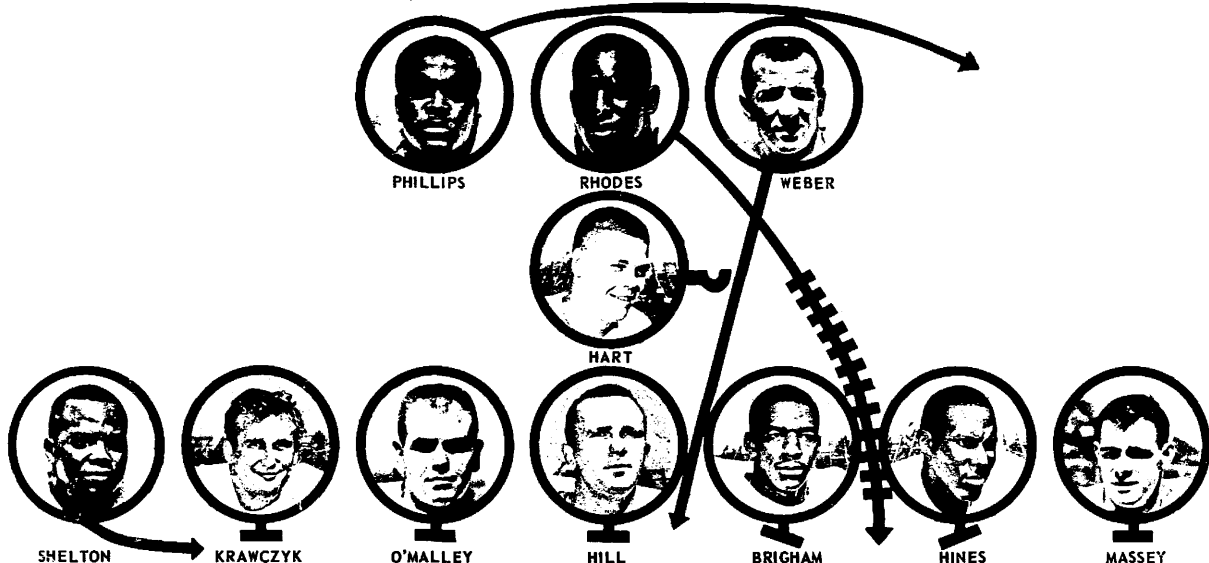
See Nocturne Star only at these Authorized Artcarved Jewelers

Hudson's Jewelry  
Tschannan Jewelers  
F.M. Pedgett & Son  
J. Ray Jewelers  
Ray's Jewelry-F.M. Justice, Prop.  
Heron's Leading Jewelers  
Baskind Jewelers  
Cole & Young  
De Napoli Jewelers  
Farmer Jewelers  
Roman Rosinski  
R.L. Seidelmann  
Aug. Conchetti  
Van De Voorde Jewelers  
Meyer Hurwitz  
Putnam Jewelry  
Perlman's Fine Jewelers  
Einhurst Jewelry and Optical Store  
Luecke's Jewelry Store  
C. L. Ringer Co., Inc.  
Ellis Jewelry Co.  
Anderson Jewelers  
W.A. Grant Jewelry Co.  
Eaton Jewelers  
Arthur W. Retzel  
Thompson Jewelers  
Spencer Jewelers  
C.A. Jensen  
Pflaegrof Jeweler  
Arrasmith Jeweler  
Lebold & Voegelé  
Odom's Jewelry  
Mory Jewelry  
Godfrey Jewelers  
Mertins M. Vaughn  
Roberts Jewelers  
Tanquary Jewelry Store  
E.L. Sieber  
Clark Jewelers  
Wheeler Jewelry  
Hayward Jewelers  
Gainer Jewelers  
Tress Jewelry Store  
Bybring Jewelers  
Jerry Garrott, Jewelers  
McKee Jewelry Co.  
Comay's, Inc.  
Minceover Jewelry  
Brooks Jewelers  
Heston Jewelers  
Hart Jewelers  
Whittakers Jewelry  
Westchester Jewelers  
Jacobs-Lane Co., Inc.  
Ashland Jewelers

the diamond that dreams are made on

Here's a brilliant beginning for all your hopes and joys. Artcarved's newest engagement ring sparkles with a million flickering lights. Why not know the beauty of Nocturne Star forever?

See Nocturne Star and other Style Star rings at your Artcarved Jeweler. Priced from \$90. Ask about the Permanent Value Plan. For a free illustrated folder, write to Artcarved, Dept. C, 216 East 45th Street, New York, N.Y. 10017



# Confident Salukis Hope to Upset Eagles

"Operation Upset" may be in the making this afternoon, when Southern's football Salukis meet North Texas State at 1:30 p.m. in McAndrew Stadium.

An anticipated Homecoming crowd of more than 12,000 is expected to view the clash between two football teams which have had their troubles all season. Coach Don Shroyer's young Salukis show a 2-4 record for the season, while the Eagles are stumbling along with a 1-4-1 mark.

But despite their lackluster record, the Texans have a strong and potentially explosive team. The SIU coaching staff is concerned with State's power but has expressed confidence in the Salukis' ability to produce an upset.

Following last Saturday's disappointing 33-18 loss to Northern Michigan, Shroyer indicated that he may use some new strategy against the Eagles. The Salukis have been working from a pro-set and double-wing-T offense but

may change their attack even more against North Texas.

"We simply don't have the personnel to play the type of game we prefer," said Shroyer, "so it's entirely possible that there will be a few minor changes this week."

Once again, the major weapon in Shroyer's offensive stock pile is the prolific arm of quarterback Jim Hart. Hart is closing in on a school passing record which he set last season. He has completed 66 of 158 passes for 960

yards, 82 yards short of his year-old record of 1,041.

Joining Hart on the Saluki offensive unit are his favorite targets, ends Tom Massey and Bonnie Shelton and backs Rudy Phillips and Rich Weber.

Weber, who has caught eight passes for 123 yards and is the Salukis' leading ground-gainer with 229 yards in 80 carries, has recovered from a leg injury which forced him out of the Northern Michigan contest.

Massey continued to lead

Southern in pass receptions with 14 catches for 312 yards, as does Phillips in scoring with 27 points (three touchdowns, one field goal and six extra points).

Completing the SIU starting lineup are Irv Rhodes at full-back, tackles Lewis Hines and Mitchell Krawczyk, guards Isaac Brigham and Earl O'Malley and center Bennie Hill.

Clear weather is forecasted for today, with temperatures in the mid-60's.

**It's  
HOMECOMING  
1964**

**While You Are In Carbondale,  
Stop In And Meet Your . . .**

**DOWNTOWN  
CARBONDALE MERCHANTS**

- ATWOOD DRUG STORE
- BRADLEY (ACE) HARDWARE
- BEN FRANKLIN STORE
- BIRKHOZ GIFT MART
- THE BOOTERY
- BLEYERS DEPT. STORE
- CANNON'S JEWELRY STORE
- CARBONDALE NATIONAL BANK
- DAVIE'S AG STORE
- DENHAM'S SMOKE SHOP
- DON'S JEWELRY STORE
- DURALL TV CENTER
- EASTERLY'S PAINT AND WALLPAPER
- EATON & BROWN APPLIANCE STORE
- FAMOUS READY TO WEAR

- FIRST NATIONAL BANK
- FRANK'S MEN'S & BOYS' WEAR
- GOLDF'S STORE FOR MEN
- GOSS HOME FURNISHINGS
- HEWITT'S DRUG STORE
- HUB CAFE
- P.N. HIRSCH & CO.
- KAYS WOMEN'S WEAR
- LAWRENCE DRUGS
- LESLIES SHOES
- LITTLE BIG DOLLAR STORE
- L.B.J. STEAK HOUSE
- MONTGOMERY WARD CATALOG STORE
- McNEILL'S JEWELRY STORE
- McGINNIS STORE

- PATTERSON HARDWARE STORE
- RHODES-BURFORD FURNITURE STORE
- RAY'S JEWELRY & MERCHANDISE MART
- RECHTER BROS. DEPT. STORE
- STOTLAR LUMBER CO.
- SAWYER PAINT & WALLPAPER STORE
- SOHN'S MEN'S DEN
- TAGGARTS WOMEN'S WEAR
- PARKER'S CHILDREN'S WEAR & GIFTS
- TOT'S 'N' TEEN'S
- J. V. WALKER & SONS
- WILLIAMS STORE



COTTON MOORE, TACKLE



HERB CARR, END

## Whitfield Leads Eagle Attack; SIU Yardage Depends on Hart

North Texas State brings a team to McAndrew Stadium this afternoon which in many respects resembles the Salukis in weaknesses, troubles and good spots.

The Eagles are young, as are the Salukis. Only eight seniors are ranked among the top 22 offensive and defensive starters in the current Eagle lineup. There are nine juniors and five sophomores.

Odus Mitchell's 1-4-1 club (SIU is 2-4) has had trouble with its defense all season--ditto the Salukis. The Texans have given up 1,400 yards while the Salukis have given up about 2,100.

Southern has yielded 12 touchdowns via the pass while the Eagles have given up only five.

The two clubs use the same pro-type offense but the Salukis go to the air more consistently. On the ground, however, the clubs are similar. SIU has rushed for 539 yards while the Eagles have gained 556.

North Texas relies on full-back A.D. Whitfield to bear the brunt of the ground attack. Whitfield has gained three-quarters of the Eagle's rushing yardage with 329.

But that's where the Eagle ground game is stymied. Eleven other ball carriers have gained the remainder of the 556 yards. Whitfield is dangerous and enough of a one man gang to carry the team, but it puts all the Eagle's eggs in one basket.

The Eagles pass considerably less than the Salukis.

Quarterbacks Corkey Boland and Henry Cooper have thrown for only 742 yards compared to Saluki signal-caller Jim Hart's 960.

The Eagles have scored three touchdowns through the air while SIU has scored 10 times with the pass--one short of its entire total.

Barring any last minute

Cotton Moore, a 6-2, 220-pound All-Missouri Valley Conference choice; middle guard, John Edd Nelson; right tackle, Gaines Stovall; at right end, Audie Long; left linebacker, Bob Finkles and right linebacker, Dave Ellis.

The deep backs will probably be Lockhart or A.J. Waight at the left corner; Pete Linck at left safety; Phil Gonzales at right safety and Jim Leatherwood, at right corner back.

Lockhart is the punter and is leading the MVC with a 39.3 average in 34 kicks.



COACH ODUS MITCHELL

player changes, the Eagle offensive line will have Mike Bailey, a sophomore and leading scorer at left end, Marty Kahn at left tackle, Hardy Burke at left guard, Bob Sanders over the ball, Larry Thomas at right guard, Ronnie Romike at right tackle and at tight end, Herb Carr.

The backfield reads quarterback, Boland; left half, Dave Neale; right half, Carl Lockhart, the team's leading pass receiver; and at fullback, Whitfield.

The defense includes left end, Lee Allen; left tackle,

## Girls Hockey Team To Play Alumnae

The SIU girl's hockey team will play an alumnae team at 8:30 p.m. today on the football practice field.

In the first game of the season a week ago, the SIU team fought a 1 to 1 tie, with the Southern goal being scored by Bonnie Adam, a senior physical education major.

The last game of the season will be played Nov. 7 at Principia College in Elsah.

### Lutherans Plan Supper

The Lutheran Student Association is planning a "cost supper" at 6 p.m. Sunday at the Epiphany Lutheran Church.

### FOR THE BEST IN VITAMIN "C"...

- TREE RIPENED APPLES  
(We grow our own)
- ICE COLD FRESH APPLE CIDER  
(Discount on 5 gal. or more)
- HONEY - Comb or Strained

### McGUIRE FRUIT FARM MARKET

8 Miles South on U.S. 51

## Daily Egyptian Classified Ads

Classified advertising rates: 20 words or less are \$1.00 per insertion; additional words five cents each; four consecutive issues for \$3.00 (20 words). Payable before the deadline, which is two days prior to publication, except for Tuesday's paper, which is noon Friday.

The Daily Egyptian does not refund money when ads are cancelled.

The Daily Egyptian reserves the right to reject any advertising

FOR SALE	
1958 650 cc. BSA. Just overhauled. 9-1 pistons, 3/8 cams, racing mag tuned exhaust, racing sprocket, new clutch. \$575.00. Ph. 7-6128. 25.	Dresser in good to excellent condition, \$5. Desk, \$15, or high bid. Convertible sofa, good condition, \$15. Scatter rugs \$1.75 ea. Two end tables, \$3 ea. Phone 549-3421. 26
1957 Plymouth 4 door sedan. Good condition and cheap. Ph. 9-1737 after 5:00 p.m. 19.	<b>WANTED</b> Roommate to share an apartment. Modern, large. Furnished. For this quarter and winter quarter. Ph. 457-8845. 22.
5 string Gretsch Banjo, good condition. \$50; 12" sailboat, fiberglass. \$100. Call 457-6318 after 6:00 p.m. 2	<b>HELP WANTED</b> Lead guitar player for country, western, and rock 'n' roll group. Call 684-2755 or 684-3520. 30

### Today's Weather

Increasing cloudiness and warm today with showers affecting 30 to 40 per cent of the area tonight. High today in mid to upper 70s.



### Flower Shoppe

FOR ALL OCCASIONS

Campus Shopping Center  
ph. 549-3560

TECUMSEH\*



Becoming a brigadier general in the British Army isn't easy - especially if you're an American Indian. Tecumseh did it. As a military strategist, he was brilliant, but he made one mistake. He picked the wrong side in the War of 1812.

One of the truly great things he and others like him did do for the new Americans was to give them an appreciation for fine tobaccos.

In the last 150 years the quality and variety of tobacco blends has grown to the point where even the most discriminating smoker can satisfy his taste in tobaccos. We have such a selection of tobaccos and pipes.

# denham's

410 S. ILL.

OPEN DAILY TILL 7 EXCEPT SUNDAY

## BRING THIS AD AND GET 10% DISCOUNT

ON ANY SANDWICH OR DINNER  
GOOD THRU NOVEMBER 12, 1964

### PIPER'S RESTAURANT

"Home of the Steak Specials"

209 South Illinois  
Route 51

CARBONDALE

Open Daily 11 a.m. to 10 p.m.

SPECIAL  
1/2 BAKED CHICKEN  
\$1.35  
Salad  
Vegetable  
Drink

ERNIE PIPER

Manager and Head Chef

SPECIAL  
1/2 FRIED CHICKEN  
\$1.35  
Salad  
Vegetable  
Drink

DOWNTOWN

### DAILY DINNER SPECIALS

A Variety of 22 Delicious Dishes are Served Wonderful Meals at Special Low Prices

75¢ up

### DAILY SPECIAL: RIB STEAK

This Delicious Rib Steak Served with Salad, Mashed Potatoes All the Butter and Hot  
Rolls You Can Eat, and All the Coffee or Tea You Can Drink

\$1.10

Top Rusher Is Okay

# Freshmen Ready to Pick Up Lost Stride Against Evansville

Hoping to regain their winning ways, SIU's freshman Salukis travel to Evansville, Ind. Monday for a grid contest with the young Purple Aces of Evansville College.

Still smarting from a convincing 35-15 loss to powerful Memphis State, Coach Frank Sovich's talented yearlings are eager to return to the victory trail, and have a good chance to do so against Evansville.

The Salukis, 2-1 for the season, had an impressive six-game, two-season winning streak stopped as the result of the Memphis State setback.

Sovich wasn't at all pleased with his boys' showing against the highly-touted Tigers, and he expressed the possibility that there may be some lineup changes in Monday's game.

"I wasn't the least bit satisfied with our last performance (against State)," said Sovich, "but I feel we'll make a better showing against Evansville."

Returning to the Salukis' starting offensive lineup Monday is backfield star Dwane Brooks, a flashy speedster who missed the Memphis State game with an ankle injury. Brooks, a former Palatine halfback, leads Southern's frosh groundgainers with an average of 7.3 yards per carry.

Sovich's forward wall suffered somewhat of a setback, though, with the news that starting guard Ron McCartney will miss the remainder of the season with a dislocated shoulder. The 6-0, 193-pounder from Belleville suffered the injury in practice this week.

Featured starters in Monday's game include Benton



COACH SOVICH LECTURES TO HIS STARTING BACKFIELD.

quarterback Charles Bennett and linemen John Ference, Dave Jones, Ralph Galloway and Rich Hawkins. All have been impressive thus far, and have shown veteran poise at their respective positions.

Rounding out the Saluki backfield for the Evansville game is halfback Bill Blanchard, with Bill Hobs and Richard Selover alternating at the fullback position. Both fullbacks have contributed much-needed power running to the Saluki offense, which basically is a running attack.

65-piece orchestra will present Berlioz' "Roman Carnival Overture," Griffes' "The White Peacock," Villa-Lobos' "The Little Train of the Caipira" and the polka and fugue from Weinberger's "Shvanda."

The orchestra is composed of 39 SIU music students, 17 faculty members, several faculty wives and several music students from University High School.

## Cellist Is Guest at Concert

Gabor Rejto will be guest cello soloist with the Southern Illinois Symphony Orchestra at the Homecoming concert at 8 p.m. in Shryock Auditorium.

Rejto, chairman of the string department of the School of Music, University of Southern California, will play Haydn's "Concerto for Violin-cello and Orchestra."

Under the baton of SIU's Warren van Bronkhorst, the

Dine Out  
For HOMECOMING

At

# The Gardens

Food? No better than excellent

A FRIENDLY RESTAURANT

with

Lush Background Music

Multi-Colored Fountain

Comfortable Bucket Seats

Exotic Tropical Setting

without

Setting Exotic Prices

3 Miles east of Carbondale on Highway 13  
Phone 7-8276

# Embassy

Mobile Trailer Home

The spacious dining area in the kitchen includes large dinette tables with 4 chairs all in a rich spice brown maple finish.



Spacious living room sofa, upholstered chair, end tables and full length living room drapes in choice of fabrics

For only \$62 a month, you can live like a KING in a KING'S PALACE.



## Chuck Glover Trailer Sales CARBONDALE

Highway 13 East

Phone 457-6945



## BIG BELT ON THE CAMPUS

Canterbury belts lead all others among men with educated tastes. They prefer our classic styling, our unswerving insistence on high quality standards, our painstaking hand-craftsmanship. Small wonder the wearing of a Canterbury belt has become identified with traditional good taste.

Canterbury Belts Ltd.  
36 East 31st Street, New York City



# Arena Is All Things to All People

## Offers Ideal Sports Viewing, Haven From Fickle Weather

Today most of the activity and excitement on campus will be centered around McAndrew Stadium.

But competing with the body blocks, band music and frenzied cheers for the attention of the Homecoming crowd will be the new SIU Arena.

Viewing the campus from above, the Arena would appear to be a pendant dangling at the bottom of a steel, mortar and brick necklace ringing the central body of the campus.

The giant domed structure is the second jewel in that necklace. Directly to the north is the already completed Wham Education Building. Others, now under construction, are University Park, a housing area, to the east, the General Classroom building, to the north west, the communication's building to the west and the School of Technology to the southwest.

The Arena will be all things to all people. In the main it is 545 feet long and varies in width from 150 feet in the arena area to 83 feet in the north classroom wing. The mammoth structure and its beautiful landscape and adjacent 475-capacity parking lot covers 20 acres.

To the coaches it is a dream come true. To 25 student janitors and two custodians, who tend to its every need, it's a giant baby with colossal demands. To the student it's a pass to comfortable sports viewing.

And to the SIU graduation committee it's a haven from the peccadillos of mother nature who manages with heartbreaking regularity to rain out commencement exercises in McAndrew stadium.

There are many things which are impressive about the spacious, multi-purpose building. Its

massiveness is one. From the south end of the auditorium to the north end of the classroom and office wing is slightly less than the distance of two football fields.

At its highest point 87 basketballs could be stacked on top of each other and they still wouldn't reach the structural steel dome roof.

Inside the arena area four basketball games can be played at once on the floor level while wrestling and judo matches along with both women's and men's gymnastics take place on the concourse. (The 5,328 seats on the concourse are of the roll-away bleacher variety as are all the others in the arena except for 2,482 permanent chair seats on the floor level.)

But its not only the physical massiveness that attracts admirers, who have long been accustomed to 1,532 seat Men's Gymnasium as the focal point for indoor University athletic events.

The prestige value of the new \$4 million structure with its 26 offices, four classrooms, two laboratories, and numerous dressing rooms and storage rooms is almost beyond comprehension.

Already because of the building SIU has been able to hold a complete commencement exercise under one roof for the first time--it rained June 12--and has been host to one of the largest crowds ever to hear an indoor political speech and an indoor stage event in Southern Illinois.

More dividends are yet to be reaped. Some are already in sight such as hosting the national collegiate gymnastics finals in March as well as a 16-team high school holiday basketball tournament in December. Others will follow.

Just last night almost three times more people than ever before witnessed a single performance

of the annual Homecoming Stage Show as a result of the Arena's plentiful seating.

With little doubt the Arena will become the focal point of Southern Illinois because of its size and variety of uses, said Dean Justice, arena director, although he said no policy has been set as yet as to what extent it will be made available for public use.

"So far we have been making decisions as the occasion presents itself," he said.

More decisions will inevitably come as the Arena offers an ideal center for everything from stock shows and rodeos to concerts and exhibitions.

Granted SIU's sports teams will make good use of the 10,012 seats available for basketball, gymnastics and wrestling, but the Arena's use will by no means be limited to intercollegiate athletic events alone. Conventions, Military Training sessions and intramural athletics are just several other possible uses.

The giant building wasn't an overnight development, though. In fact it existed at its present location in 1952 on paper if not in actuality. It was clearly marked on the University's first master plan in that year, according to Willard Hart, associate university architect.

From 1952 the building progressed on the drafting board waiting for the appropriation of enough money to start construction. In 1961 a state bond issue provided the necessary funds and construction began in March, 1962, although 100,000 man hours of planning had already occurred.

Two and one-half years later, in September of this year, a dream became reality.

Formally Open Next Month

# SIU's Coaches, Their Squads Eager to Work in New Arena

SIU's new multi-million dollar dome Arena will formally open its doors to Southern Illinois sports fans next month.

The opening of the Arena, one of the biggest and best equipped collegiate sports palaces in Illinois, will be a welcome sight for three SIU coaches who remember too well the old and cramped confines of Men's Gymnasium.

The coaches--Bill Meade, Herb Vogel and Jim Wilkinson--all expressed eagerness to get their teams established in the Arena.

"The Arena provides SIU athletic teams with a wonderful facility," said gymnastics coach Meade, whose team currently reigns as the nation's top collegiate gymnastics team. "It will be a tremendous place for the boys to perform, and has to be one of the best college gym facilities in the nation," Meade added.

Meade emphasized that the new Arena, which will seat 10,000 persons for sporting events, will eliminate two problems which plagued his team in the old gymnasium--

the lack of space and the necessity for his boys to practice at night.

Under the new set-up in the Arena, Meade's gymnasts, along with Vogel's women gymnasts and Wilkinson's wrestlers, will practice on the building's upper concourse and will hold inter-collegiate meets on the main floor.

Vogel's Southern Illinois Women's Gymnastics Club has been practicing in the Arena for the past three weeks and will open its 1964-65 season there Nov. 21 against a team from Flint, Mich.

"The girls are well-pleased with the new facilities," said Vogel, "and are eager to compete in the Arena." The fact that the building is big and new has increased enthusiasm and spirit on the team," he added.

The gymnastics club has been practicing on the spacious upper concourse directly across from the wrestlers.

"The girls say it's as different as night and day between the new Arena and the old gymnasium," said Vogel.

He felt that added space and cleaner facilities were the

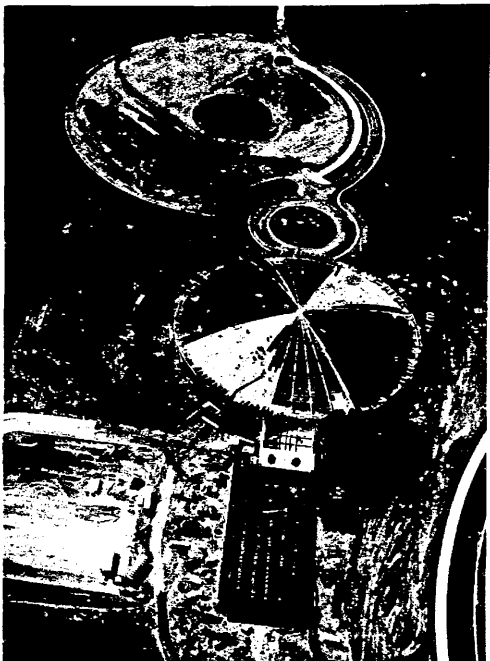
biggest advantages of the Arena.

According to coach Wilkinson, his wrestlers will utilize the facilities at the new Arena "to their fullest."

Although Wilkinson hasn't attended a practice session yet, because he was in Tokyo for the Olympics, he has some definite ideas about how the dome-shaped building will help his squad.

"The boys will get a lift immediately," said Wilkinson. "They were depressed last year because of the cold and other bad conditions in the quonset hut." Last year, as has been the case for a number of years, the wrestlers had to practice in the quonset hut behind the old gymnasium. The facilities there were limited, and the temperature often dropped below the 60-degree level.

"There will be a 60 per cent improvement from what we had last year," says Wilkinson. "The new Arena is warmer, cleaner and just a much better set up all the way around."



IN THE BEGINNING - Egyptian Photographer Hal Stoelzle took this aerial of the SIU Arena in the early stages of its construction. It shows part of the skeleton of the dome still uncovered.

## Students Like Big, Beautiful New Arena

Fabulous! Big! Beautiful!

These adjectives by students described the SIU Arena. While most commented on its size, none thought it was too big--some thought it should be bigger.

Getch Poderys, a sophomore, thought that while it isn't big enough for all the students, all students don't go to the games. She said she thought it really did something for the campus.

While Ken Nelson, a junior majoring in design, thought the Arena was a fine thing his commitment to the beauty of the structure was, "I like the floor."

A wheelchair student who chose not to be identified said he liked the Arena because it is the old gym, "they used to dribble balls off my head."

Don Jelly said the big advantage to the Arena is that everyone will be able to see from all the seats.

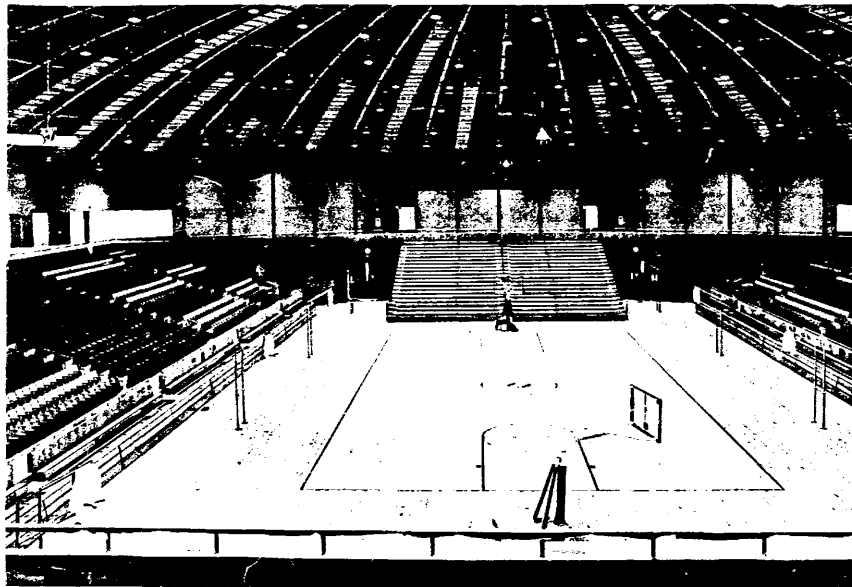
The seats, especially the fold-up ones on the second deck, offended Gary Sans Souc because he thought they were dangerous to women in heels. He also noted that there is a half-inch crack in the playing floor which could be a danger.

While Sans Souc thought the building looked fine from the outside, he said, "You walk in and it's just another gym."

### Lamonica Revives Bills, Is Named Top Player

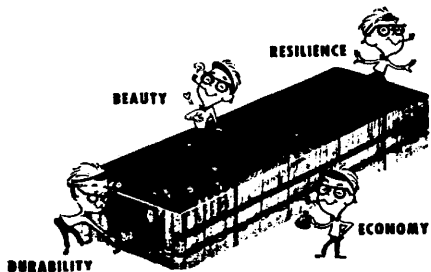
NEW YORK (AP)--Daryl Lamonica, the bullpen ace of the unbeaten Buffalo Bills saved his fifth game last week and earned recognition as The Associated Press Player of the Week in the American Football League.

Called off the bench to replace Jack Kemp when the Bills trailed the New York Jets 21-10 in the third quarter Saturday night, the former Notre Dame quarterback led Buffalo to a 34-24 victory



## Congratulations

on a truly great achievement!



Jennison-Wright End Grain Flexible Strip Flooring

has been installed in a beautiful new Arena. We are proud to have provided this part of the newest addition to the SIU campus.

The JENNISON-WRIGHT Corporation

PLANTS at TOLEDO, OHIO and GRANITE CITY, ILLINOIS

# Arena Is Athletes' Dream Come True

## Gives SIU a Stronger Basketball Schedule

By Donald Boydston  
Athletic Director

The question we are hearing most often this fall, is, "Now that the Arena is finished, what will it mean to intercollegiate athletics at Southern Illinois University?"

First, we should say that the new SIU Arena is a multi-purpose building that will be used by the University for many different activities besides athletics. It has already been used for graduation exercises and for a political meeting.

Classes in physical education, intramural competition and recreational activities are now or will be carried on in the spacious new building. Concerts, dances, large meetings and many other events will be scheduled.

For the Intercollegiate Athletic Department the Arena is the fulfillment of a dream of many years. When we came to the campus in 1955, we became involved in the planning of the structure. Many people spent thousands of hours in attempting to make the building as practical, as functional and attractive as possible.

Those representatives of other universities who have viewed the facility have been greatly impressed with its beauty and the comfort of its seating arrangement. Those of us who are members of the athletic family feel we are now in a position to put certain parts of our athletic program on a par with other institutions of our size and reputation.

One obvious benefit of the building can be seen in the type of basketball schedule we were able to arrange this year. Last year we can only describe our home basketball schedule as being weak. During 1964-65 our basketball team will play some outstanding teams, including the opening game with Oklahoma State, coached by Henry Iba, who also coached the winning Olympic basketball team in Tokyo this year.

Other fine teams on our schedule are San Francisco State, Toledo, Washington University, Tennessee State, Ohio University, and for the

first time we have been able to lure Evansville onto our own home court.

It is our hope and belief that in the future we will have even stronger schedules. This point of view is based upon the premise that fans in Southern Illinois and our students will support us with good attendance. This will mean that we can then pay the large guarantees which are required to bring the nation's best basketball teams into the Arena.

Another dividend has been the scheduling of the NCAA gymnastic championships for the Arena this year. It is probably that within the next



two or three years the national intercollegiate wrestling championships will be held here, and basketball fans will also benefit because the sectional and super-sectional state high school basketball playoffs have already been scheduled for the Arena.

During the Christmas vacation 16 of the better high school basketball teams in the State of Illinois will compete in a special invitational

tournament. This tournament should eventually draw the best the State of Illinois has to offer, and despite the claims of some sister states, Illinois high school basketball is as good as any played in this country.

The demands are already heavy for the scheduling of the myriad of other attractions and activities, and policies are presently being developed for scheduling.

Due to its spaciousness, it is probable that indoor tennis can be contested and in a limited way the track and field team can make use of the Arena.

Eventually, since the present structure is only the first phase of a three-stage athletic facility, it is expected there will be a large field house with a dirt floor that can be used by practically all of the sports in our intercollegiate program. Indoor track meets can be held in such a field house. Baseball practice is possible in early spring and in inclement weather. Even golf, with specially constructed nets, can be practiced.

The intercollegiate athletic program at Southern Illinois University has grown at a rapid pace in the last decade. Ten years ago we found it difficult to compete successfully in a small college conference. Now we are competing in most sports against the best teams in this country, and the Arena will mean, particularly where basketball is concerned, that we now have a much better chance of recruiting the outstanding Southern Illinois high school basketball player.

We have always contended that if we could interest the better Southern Illinois high school basketball players in SIU we can compete with anyone. When a fine high school basketball player now views the Arena, easily one of the most beautiful in this country, his first reaction is a positive one in which he would welcome the opportunity to play basketball here the next four years, with other factors being equal.

Needless to say, the Athletic Department is proud and grateful for the many opportunities being provided by the new SIU Arena.



## A New Face at SIU

... Unique and functional; we are proud to have taken part in its construction. We extend our hearty congratulations to SIU for a tremendous accomplishment.

# TRIANGLE CONSTRUCTION CO.

Carbondale, Ill.



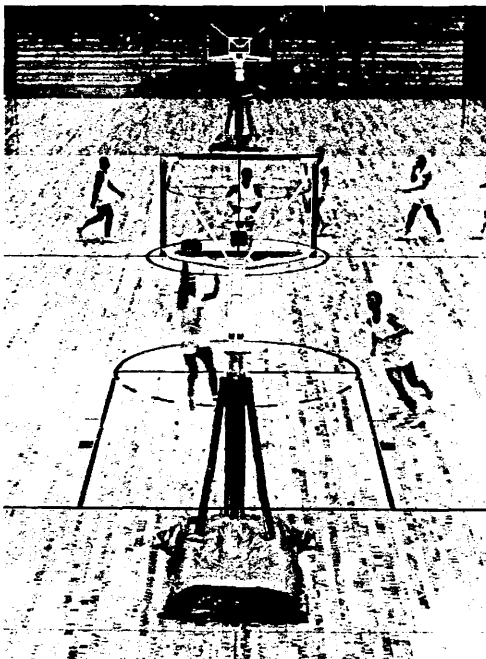
## Cagers to Face Tough Card

A rejuvenated basketball schedule, including games with nine new opponents and five holding major status, awaits the Salukis this season as they move into their new home at the Arena.

The 21-game schedule for 1964-65 features 13 home games including contests with Oklahoma State, Toledo, San Francisco State, Evansville, Ohio University, North Dakota State, Tennessee Tech and State College of Iowa.

Opening at home with games against Oklahoma State and North Dakota on consecutive nights, Coach Jack Hartman's cagers will play in the Arena on two other occasions in December, three times in January, and six times in February.

While major opponents--Oklahoma State, Kansas State, Wichita, Toledo and Ohio University--demand key attraction on Southern's schedule, Southern fans may be equally attracted by Evansville's defending college division champions as well as other standout small-college teams, Tennessee State, Kentucky Wesleyan, Washington (St. Louis) and Ball State.



**TEAM PLAY** — Joe Ramsey (right forefront), moves in for a rebound as an unidentified Saluki teammate takes a shot during a recent practice in the new SIU Arena.

## Boon to Basketball

# Hartman in Arena: A Happy Helmsman

"It's such an improvement that it will be quite a while before I realize how much better off we really are," said Jack Hartman, varsity basketball coach, when asked how he liked the new SIU Arena.

It will help the basketball players quite a bit, Hartman indicated, because they will have a building that they can take pride in when their friends and parents come to see them play.

Hartman said that now, "I won't be embarrassed when we bring an opponent in here."

Hartman indicated that the opponents that he "brings in here" are likely to be schools with greater prestige because of the improved facilities in the Arena.

We might not be as successful because of this, but it will really help the school's image.

Besides the gymnasium proper, Hartman said there are "any number of little bitty things that are not important to others but are important to us."

These "littly bitty things" are offices, locker and train-

ing rooms, and greater opportunities for practice.

Will there be any problem filling all the seats? Hartman thinks there will be at first for two reasons.

First, students and area residents aren't used to thinking of us when home games come up, because finding a seat for a home basketball game was almost impossible before the Arena was built.

Also, Hartman indicated that it might be a problem finding enough basketball fans in the Carbondale area to fill the dome-like structure.

## 21 Basketball Games Slated

Here is the complete SIU Basketball schedule:

- Dec. 1, Oklahoma State
- Dec. 2, North Dakota State
- Dec. 5, At Southwest Missouri State
- Dec. 7, At Kansas State
- Dec. 11, Tennessee Tech
- Dec. 12, State College of Iowa
- Jan. 6, Washington (St. Louis)
- Jan. 9, Indiana State
- Jan. 11, At Wichita
- Jan. 15, Kentucky Wesleyan
- Jan. 20, At Evansville
- Jan. 25, At Tennessee Tech
- Jan. 26, At Tennessee State
- Feb. 1, At Central Missouri State
- Feb. 6, Ball State
- Feb. 8, At Kentucky Wesleyan
- Feb. 10, San Francisco State
- Feb. 13, Toledo
- Feb. 15, Tennessee State
- Feb. 20, Ohio University
- Feb. 27, Evansville

## Tourney to Open Arena to Athletics

The Carbondale Holiday Tournament, scheduled for Dec. 28-30, will be the first major athletic tournament to be held in the new SIU Arena.

Although the Saluki basketball team will already have played four games in the Arena by the Christmas holidays, the tournament will likely provide many area fans their first view of the domed structure.

This is the first year for the tournament.

High school basketball teams competing for the title will be:

- Alton, Bremen, Cahokia, Canton, Carbondale Community, Decatur Eisenhower, Evanston, Harrisburg, Jacksonville, Metropolis, Murphysboro, Olney, Pinckneyville, Sparta, West Frankfort and Woodriver.

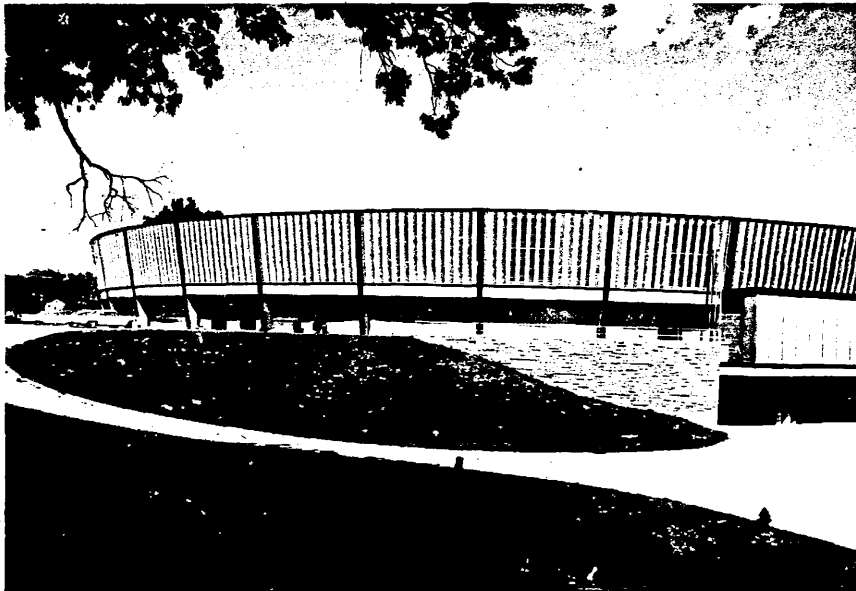
## Wrong-Way Run Covered 66 Yards

MINNEAPOLIS-ST. PAUL (AP)--Jim Marshall's wrong-way run with a recovered fumble last Sunday in Minneapolis game against the San Francisco 49ers will go down in the National Football League record books officially as a 66-yard dash.

The official statistician in San Francisco had credited Marshall with a 60-yard run for a 49er safety, but a review of game films showed it actually covered 66 yards.

The feat thus is credited with being two yards longer than Roy Regels' famed wrong-way run in the Rose Bowl.

# IT'S THE ONLY ONE OF ITS KIND . . .



## Congratulations, SIU . . .

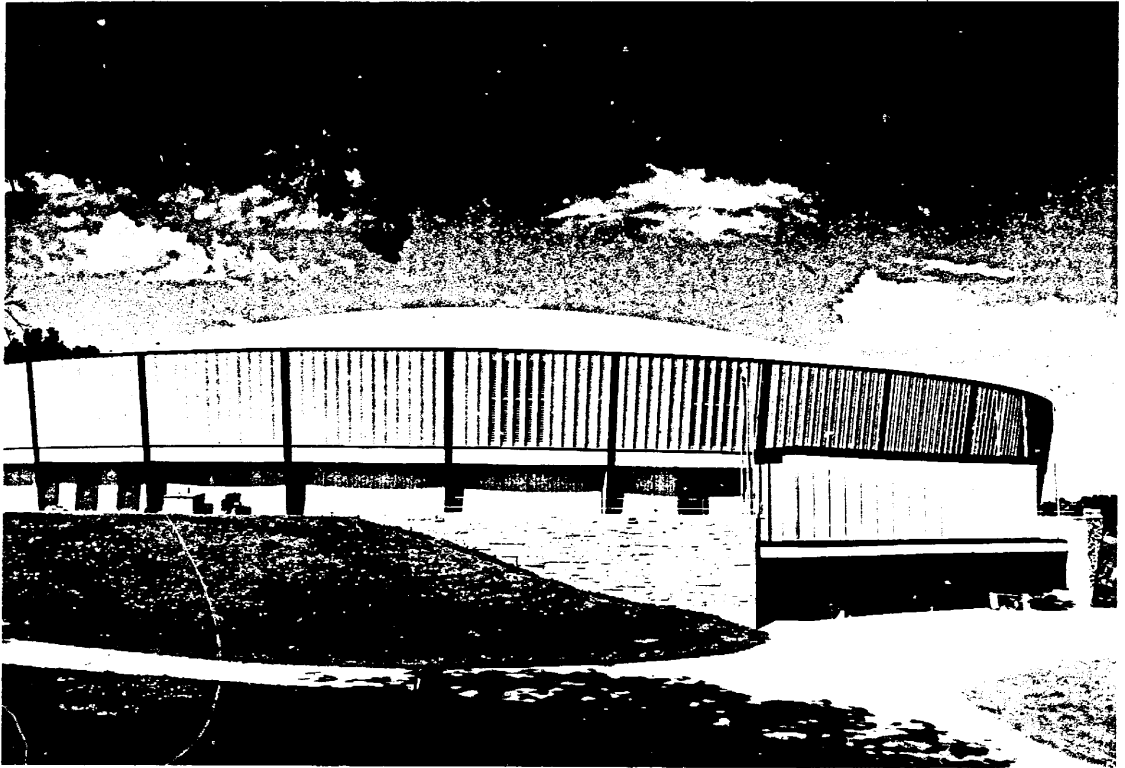
We are pleased to have been selected to furnish and install Kentile Vinyl Asbestos Tile and Rubber base in various offices, class rooms and corridors as well as carpet from Puerto Rico for the Green Room, Gullistan carpet for the Athletic Director's room and various offices in the building.

# ZAHNER CARPET CO.

Centralia, Illinois

Clarence Zahner

Roger L. Hill

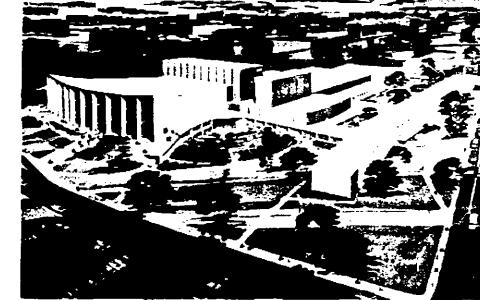
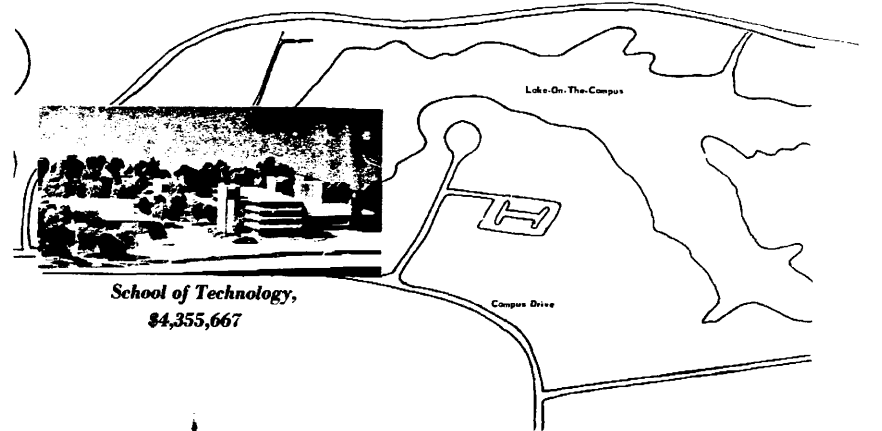
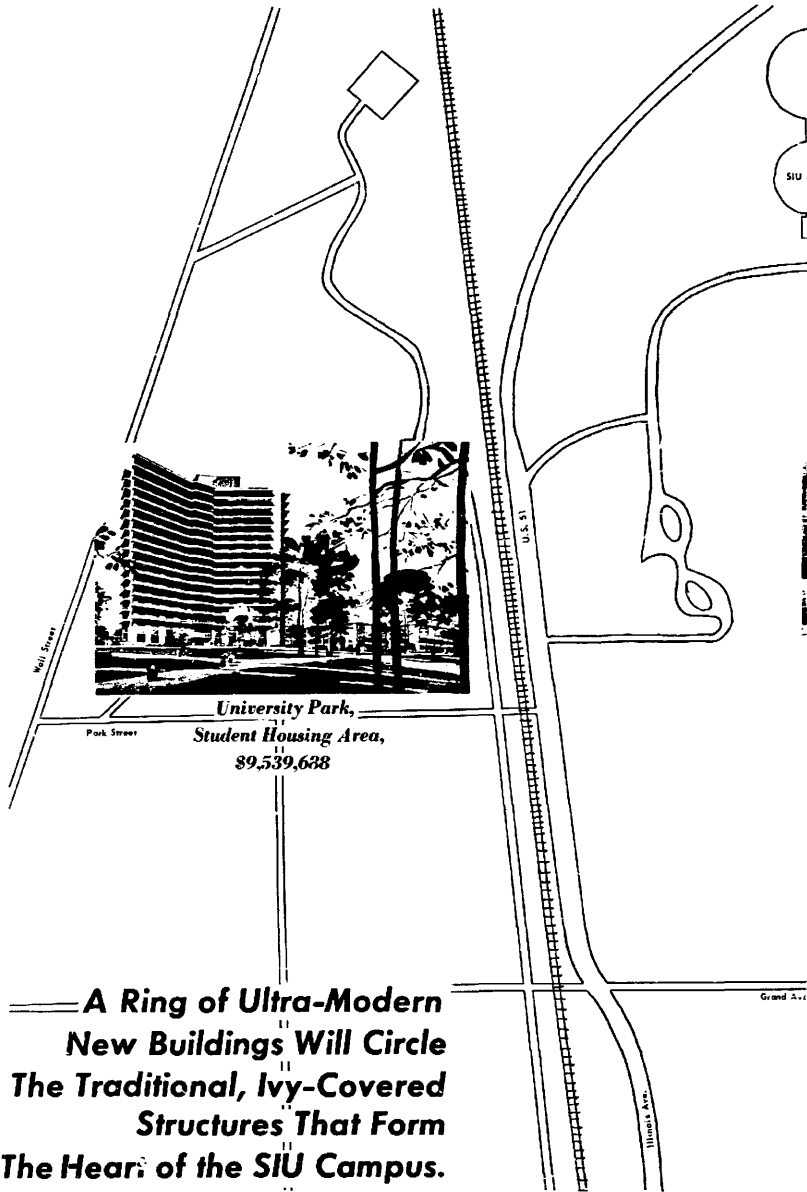


**CONGRATULATIONS  
TO THE STAFF  
AND STUDENT BODY  
Of Southern Illinois University**

**GEORGE S. WALKER  
PLUMBING AND HEATING, INC.**

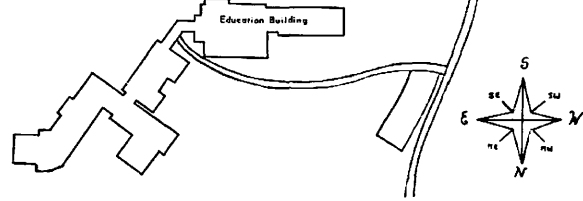
Decatur, Illinois

# Construction Boom at SIU Ends the Old With the New



**General Classroom Building,**  
\$3,270,946

**School of Communications,**  
\$3,936,189





**NCAA GYMNASTICS CHAMPS** — Happy SIU gymnasts pose with their proud coach and hard-won NCAA trophy shortly after winning the national gymnastics title last March. They are (standing left to right) Ray Yano, Rusty Mitchell, Steve

Pasternak, Bill Hladik and Dennis Wolf. Kneeling (left to right) are coach Bill Meade, Chuck Ehrlich and Bill Wolf. All but Mitchell and Ehrlich return this season.

*Lauds Wolf's Efforts*

## Mead Returns From Tokyo To Find Gymnasts in Shape

Bill Mead, SIU gymnastic coach, returned Sunday from the 1964 Olympics in Japan to find the Saluki gymnasts in fine shape.

"I watched the boys work out Monday for the first time, and I'm quite pleased with their progress," Mead said.

Mead expressed his appreciation of Bill Wolf whom he left in charge of the team while at the Olympics.

"Wolf has done a fine job keeping the boys in shape, and the team members have also done a fine job with no one here to drive them," Mead said. Several of the team routines are already in good shape according to the coach.

The Salukis are defending NCAA gymnastic champs, but they will have to work hard to keep that title according to Mead.

"We lost a lot last year with the graduation of Rusty Mitchell, Tom Geocaris and Charles Ehlich," Mead said. The SIU team will also be minus Dennis Wolf and Bill Pasternak this year.

"Dennis Wolf didn't return

this year because of new family financial problems," Mead said, "and Pasternak has retired to studying."

However, along with Bill Wolf, who is recovering from a knee injury, the team has a solid nucleus of returning boys, and a good crop of freshmen, Mead said.

Another element in the favor of the gymnastic team is the fact that they now do their training in the Arena.

In the old gymnasium, the team had to do their practicing from 6 to 8:30 p.m. nightly, and, to do this, they had to miss dinner and lose time they could have spent for homework.

"Now, we practice between 3 and 6 p.m., and we have time to eat, study and participate in our family life," Mead said.

Perhaps the worst thing about practicing in the old building was the routine the team had to go through every night, that is, setting up and taking down the equipment, the coach continued.

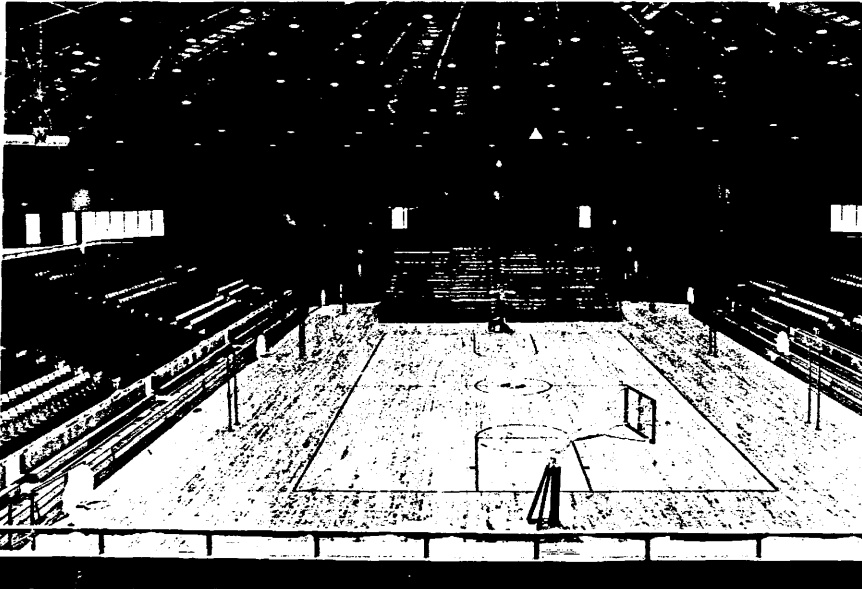
"The equipment stays up most of the time now, and I am looking forward to not being a part time janitor," Mead said.

"We have gone from one of the worst situations to possibly one of the best," he said.

The Arena and its facilities will also be helpful in recruiting freshman talent, according to Mead.

"This year the national NCAA gymnastic finals will be held here in April, and I am anticipating that the Arena will serve as a good drawing card for visiting high school students," Mead said.

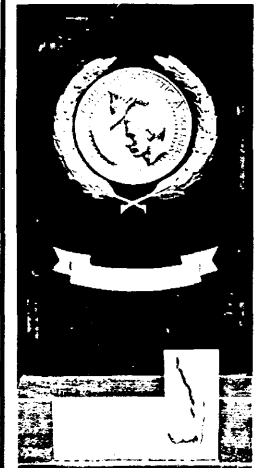
# Let's Play Ball!



We want to take this opportunity to express our best wishes to Southern Illinois University in a tremendous achievement. We are proud to have taken part in the construction of this fine arena.

## H. O. EARL

Springfield, Illinois



**ELUSIVE TROPHY** — Southern's gymnasts finally won the NCAA's national title and trophy last March, after finishing second in the finals three straight years.

## Gymnastics Finals Set Here April 2-3

SIU will be the host for the annual NCAA national gymnastics finals here April 2-3.

The meet, which will feature representatives from more than 50 gymnastics teams across the nation and the NCAA's two top gymnastics squads, will be held in the spacious SIU Arena.

Southern is the defending NCAA champion and Coach Bill Meade's squad is given a good chance to keep the title this season.

# Six Lettermen Are Key to SIU Wrestling Hopes

## Coach Jim Wilkinson Also Counting on Promising Rookies

When SIU's wrestling team makes its debut in the Arena Dec. 11, Saluki mat followers will view an experienced squad comprised of six returning veterans and a number of promising rookies.

Coach Jim Wilkinson's Salukis open at home against a rugged Bloomsburg State (Pa.) College crew, hoping to improve on last year's 3-3 dual meet record.

Come from the SIU wrestling scene are such popular standouts as Larry Kristoff, Don Millard and Terry Finn.



COACH JIM WILKINSON

But returning from the nation's 12th best collegiate wrestling team last season is an impressive list of veteran starters, three of whom were named to the NCAA's 1963 mid-season All-American team.

The top names among the returnees include seniors Don Devine, Bill Hartzell and Dan DiVito and a junior sensation, Don Schneider.

Devine, a talented senior from Bloomington, missed the Salukis' last two dual meets with a serious knee injury. Devine has recovered and should be at full strength when Southern opens its wrestling season with the annual Illinois Invitational Meet at Champaign Dec. 4.

Devine, a spunky 115-

pounder and NCAA mid-season choice in 1963, is a determined competitor. He is being counted on by Wilkinson to be one of the team's big winners.

Joining Devine on the squad's elite list are Schneider and Hartzell. Both were mid-season All-American selections last year and have the potential to repeat this season.

Schneider, 130 - pound standout from Hillsdale, and Hartzell, a product of Overland, Mo., are considered key men in the SIU wrestling picture. Schneider recorded an outstanding 11-3 record as a sophomore last season while Hartzell, a rugged 171-pound ace who was plagued with injuries during the latter part of the 1963 - 64 campaign, finished with a solid 10-4 record.

According to Wilkinson, DiVito, a classy senior from Niles, was one of the most improved wrestlers on last season's squad and is being counted on to have an outstanding season this year.



DON SCHNEIDER

Other returning lettermen include 171-pound junior Dan Gesky and heavyweight Dennis McCabe. McCabe, a brawny 191-pounder, is expected to fill the heavyweight position left open by the graduation of Kristoff, an All-American and member of the 1964 U.S. Olympic team.

"Replacing Kristoff ap-

pears to be our biggest problem," said Coach Wilkinson. "But I am confident that one of our returning heavyweights will adequately fill the gap."

Wilkinson also believes that this year's squad has more depth and should have better overall strength in divisions below heavyweight.

The stocky mat coach is looking to four sophomores to bolster his lower weight classes. They are Larry Baron, George McCreery, Mack Brown and Tim Murphy.

Murphy, a teammate of Baron's at East Leyden and Brown, from East Proviso, received all-state recognition last year and currently are vying for positions on Wilkinson's squad.

While the talent on the SIU wrestling squad is strong, so is the 1964-65 schedule. Included on the Salukis' slate this season are major college powers Oklahoma State and Iowa State and top small-college teams Bloomsburg (Pa.) State and Moorehead (Minn.) State.

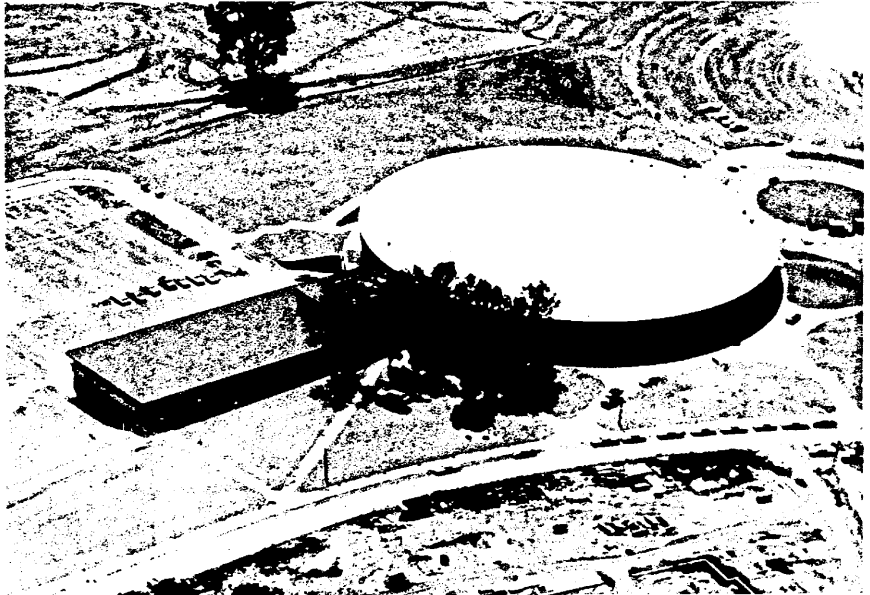
Other teams on Southern's

schedule are Indiana State and Parsons College. The Salukis also will compete in a quadrangular meet at Miami of Ohio and the annual LaGrange Invitational Tournament.

The schedule is pending before the Athletic Council and all meet dates will be announced when the schedule is approved.



DON DEVINE



### Mat, Gymnast Lineup Listed

Southern's wrestlers and gymnasts will play their best schedules in SIU history this season. The schedules are pending approval by the SIU Athletic Council, and dates have not been announced.

The wrestling schedule:

- Iowa State
- Oklahoma State
- Indiana State
- Bloomsburg (Pa.) State
- Moorehead (Minn.) State
- Parsons College
- Miami of Ohio Quadrangular Meet
- Illinois Invitational Meet
- LaGrange Invitational Tournament
- Detroit Invitational Tournament

- Gymnastics schedule:
- Denver University
- University of Illinois (Chicago branch)
- Iowa State
- Wichita State
- University of Colorado
- University of Arizona
- Arizona State
- Minnesota
- Michigan State
- Ohio State
- Mankato State

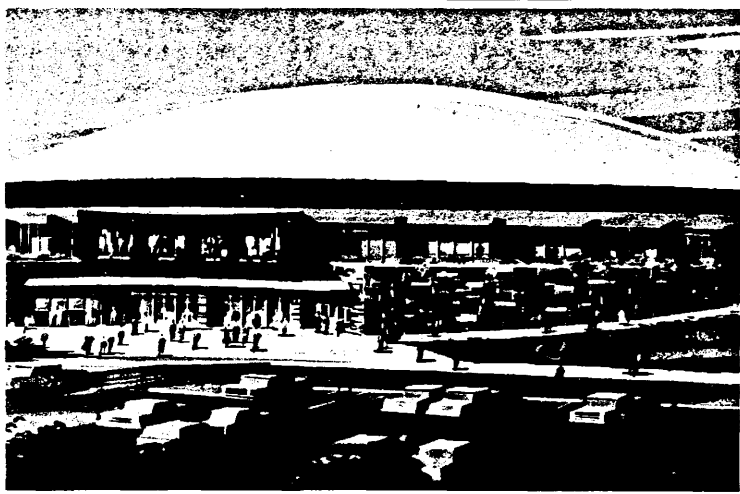
## AN ADDITION TO SIU THAT MAKES A GREAT UNIVERSITY GREATER

*We extend our congratulations to the student body, faculty and staff of Southern Illinois University. We are proud to have taken part in this outstanding achievement.*

### GO SOUTHERN BEAT NORTH TEXAS STATE

## M.H. WOLFE & CO.

Granite City, Illinois



## Alumni to Get Look at Arena, New Focal Point of Activities

Visiting alumni will have the opportunity to inspect the new SIU Arena, soon to become one of the focal points of activities on the campus. The Arena will be open until 1 p.m. Saturday, according to William D. Justice, manager, so that alumni will have a chance to tour the building.

The domed structure, which has already played host to commencement, registration and a political rally, will be the scene of Friday night's Homecoming stage show.

The Illinois Education Association will meet there also on Friday.

Other events scheduled in the Arena include all home varsity basketball games, gymnastic and wrestling

events and central registration.

The NCAA Gymnastics Championship and the National Collegiate Judo Championship have also been booked for the Arena.

In addition, an ACT testing program, various coaching clinics and a high school band contest are scheduled.

Sixteen teams will participate in a high school holiday tournament, to be held in the Arena during the Christmas break. Officials are also investigating the possibility of holding sectional and super-sectional basketball tournaments there.

Other possibilities include a dog show and using the Arena to video tape a University opera performance.

## Cassius Vows He'll Triumph

BOSTON (AP) -- Cassius Clay or Muhammed Ali, the world's heavyweight champion by either name, predicts former champion Sonny Liston "will be mine in nine" when they meet in Boston on Nov. 16. "But I may have to shorten that a bit."

Clay held a full-blown press conference Wednesday when he kicked off his Boston training sessions. Most of the adjectives he used in the room crowded with sports writers, photographers and newsreel cameramen were in praise of his talents.

"He's in for a bloody battle, I'll tell you that," Clay proclaimed as he perched atop a chair back at the head table.

"There'll be no hurt shoulder," he said, referring to the February fight in which Clay won the title from Liston when Liston failed to answer the bell for the seventh round because of an injured shoulder.

"This fight will end with Liston on his back," Clay said, "I'll guarantee that."

"I didn't really want to make a prediction on this fight," he said, "I didn't want to give Liston a chance to get back to his stool in the corner."

"I'm having some 'Sonny Liston sit-down stools' made. You'll be able to buy them at the fight."

But this piece of prophecy was forthcoming nevertheless. "Right now, I'd say he's mine in nine, but I'm in such good shape--the best of my life--I may have to shorten that to four just before the fight."

And dipping into politics he drew a laugh from the crowd when he paraphrased the campaign slogan of a presidential candidate:

"And in your heart you know I'm right."

"I'm going to whip Liston like Johnson's going to whip Goldwater."

He lapsed into the realm of rhyme again to offer the "After four rounds of fast pace, Liston will be on his face."

His newly-acquired "Strategy advisor," old-time Negro comedian Stepin Fetchit, said he was briefing Clay on techniques used by Jack Johnson the heavyweight champion of decades past.

The champion said he now weighs 215 and will be down to 208 for the fight, two pounds less than for the first Liston fight.

The 15-round match is set for the Boston Garden.



## Time to Renew Old Friendships

And to remain in touch  
with your Alma Mater.

## Suscribe to The DAILY EGYPTIAN

only 2.00 term (12 weeks) OR 6.00 for a year.

Mail Completed Coupon with remittance to:

DAILY EGYPTIAN  
Circulation Dept.  
Bldg. T-48  
Southern Illinois  
University  
Carbondale, Illinois

IN THIS BOX, GIVE INFORMATION ABOUT THE PERSON WHO WILL RECEIVE

THE PAPER

Name \_\_\_\_\_  
 Address \_\_\_\_\_  
 City \_\_\_\_\_ Zone \_\_\_\_\_ State \_\_\_\_\_

10/31

Paid by \_\_\_\_\_  
 Address \_\_\_\_\_  
 City \_\_\_\_\_ Zone \_\_\_\_\_ State \_\_\_\_\_

Subscribe  
Today!

# Homecoming Game: Long Tradition

## Opponents Included College on Present SIU Campus at Alton

By Alan Goldfarb

The SINU Squad came back strong in the second game of the season against Cape Girardeau and held the Missouri boys scoreless throughout the game, although they, themselves, were unable to cross the visitors goal line. The game ended 0-0.

The above paragraph was the opening of a story dated Nov. 21, 1921. It was taken from the Egyptian and the headline read: "SINU Come-Back Staged!" "Against The Cape Normal, Unable to Score on Cape Girardeau, Holds Them 0-0."

That's how the first Homecoming game at Southern ended -- in a scoreless tie. Today, Southern Illinois University, almost 43 years from that first game with Cape, will hold its annual Homecoming game with North Texas State University of Denton, Tex.

Two of SINU's homecoming games, ironically, were played against Shurtleff College of Alton. The Shurtleff College campus is now occupied by the Alton center of SIU's Edwardsville campus. Shurtleff won the first encounter by a 7-0 score and lost the second 2-0.

The Salukis have come a long way since the days of the old Maroons as they were called then. Football players like Neber, Hamilton, Captain Carson, Myers, Nyle and Otis were the heroes of 1921.

A small article appearing

on the front page of the Egyptian, dated Nov. 11 of that same year, proclaimed the first Homecoming although it wasn't a big thing at the time, it said: "It (Homecoming) is a project this year in which SINU throws open her doors to welcome back her thousands of former students. Next year it will no longer be a project but an institution. . . ." It certainly has become an institution here at SIU.

William McAndrew, for whom the Stadium is named, was coach of that first 1921 Homecoming team.

The Salukis will be going after their seventh straight Homecoming victory dating back to 1958 when the Salukis ripped little Washington and Lee, 36-7. The current six-game string has been the second longest Homecoming winning streak. The Salukis or Maroons of 1929 to 1934 were equally as successful in the annual event. Current baseball coach Glenn "Abe" Martin was a member of the 1930 squad which trounced Illinois State, 39-0. The 1930 outfit was the only undefeated team in the school's history.

The "SINU boys" came back the next year in 1922 to beat Cape, 12-0 for their first Homecoming win. They've added 22 since then while dropping 16 and tying three.

The Salukis had their easiest time against Charleston (Eastern Illinois) in 1941 when they racked up a 41-0



score. The Panthers, who have been the Salukis most frequent HC foes--12--got their revenge 10 years later to hand Southern its most humiliating Homecoming loss, 47-19.

Only 13 teams have played the Salukis on Homecoming Day in the 43 years of its existence. Against EIU, the Salukis are 9-3; against Illinois State, 4-3-1; Southeast Missouri State, 3-1-2; Western Illinois, 1-3; Northern Illinois, 1-2; Washington University of St. Louis, 0-2; defunct Shurtleff College, 1-1; Washington and Lee, 1-0; McKendree, 1-0; Eastern Michigan, 0-1; Central Michigan, 0-1 and Northern Michigan whom the Salukis beat last year, 27-0, 1-0.

### Past Homecoming Games:

- 1921-SINU 0, Cape 0 tie
- 1922-SINU 12, Cape 0
- 1923-Cape 13, SINU 12
- 1924-SINU 24, Cape 0
- 1925-Shurtleff 7, SINU 0
- 1926-SINU 23, Charleston 0
- 1927-SINU 0, Cape 0 tie
- 1928-Charleston 18, SINU 0
- 1929-SINU 7, Cape 0
- 1930 - SINU 39, Illinois State 0
- 1931-SINU 7, DeKalb 6
- 1932 - SINU 25, Eastern Illinois 0
- 1933-SINU 2, Shurtleff 0
- 1934 - SINU 13, Eastern Illinois 6
- 1935-DeKalb 28, SINU 0
- 1936-SINU 13, McKendree 0
- 1937 - Illinois State 13, SINU 6

- 1938-Illinois State 6, SINU 0
- 1939-Macomb 20, SINU 0
- 1940 - Illinois State 25, SINU 6
- 1941 - SINU 41, Eastern Illinois 0
- 1942-Illinois State 7, SINU 0
- 1943-No Game (because of war)
- 1944 - SINU 39, Eastern Illinois 0
- 1945-SINU 13, Macomb 6
- 1946 - SINU 29, Eastern Illinois 0
- 1947 - SINU 20, Northern Illinois 0
- 1948 - Western Illinois 13, SIU 7
- 1949 - Eastern Illinois 26, SIU 13
- 1950-SIU 14, Illinois State 14 tie
- 1951 - Eastern Illinois 47, SIU 19
- 1952 - Washington U. 19, SIU 14
- 1953 - SIU 7, Eastern Illinois 0
- 1954 - Michigan Normal 20, SIU 0
- 1955 - Washington U. 32, SIU 13
- 1956 - Western Illinois 21, SIU 7
- 1957 - Central Michigan 21, SIU 12
- 1958 - SIU 36, Washington and Lee 7
- 1959 - SIU 7, Eastern Illinois 0
- 1960 - SIU 33, Illinois State 6
- 1961 - SIU 34, Eastern Illinois 14
- 1962 - SIU 14, Illinois State 0
- 1963 - SIU 27, Northern Illinois 0

KING SIZE COLGATE TOOTHPASTE



TUBE



**Route 13 East  
OPEN 8-9 DAILY**

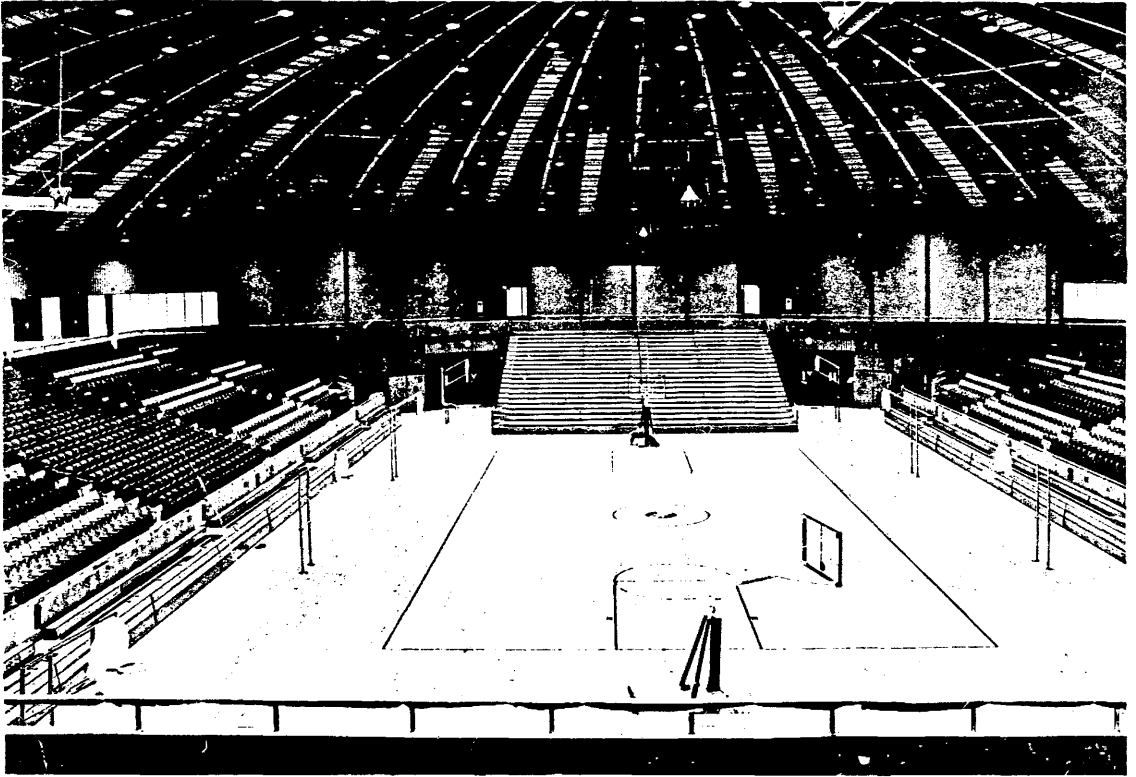
39

SPECIAL OFFER  
GOOD  
SUN. ONLY

LIMIT 1 TUBE

SAVE...SAVE...SAVE...SAVE...SAVE...SAVE...SAVE...SAVE...SAVE

# CONGRATULATIONS



## S. I. U.

ON THE COMPLETION OF YOUR FINE ARENA

**TIBBETTS PLUMBING AND HEATING COMPANY**

**ANDERSON - INDIANA    DAYTON - OHIO**

**DANVILLE - ILLINOIS**



**PLUMBING HEATING AND REFRIGERATION SINCE 1910**