

2012

A Method for Simulating Nonnormal Distributions with Specified L -Skew, L -Kurtosis, and L -Correlation

Todd C. Headrick

Southern Illinois University Carbondale, headrick@siu.edu

Mohan Dev Pant

Southern Illinois University Carbondale, mpant@siu.edu

Follow this and additional works at: http://opensiuc.lib.siu.edu/epse_pubs

Published in *ISRN Applied Mathematics*, Vol 2012, at

[doi:10.5402/2012/980827](https://doi.org/10.5402/2012/980827)

Recommended Citation

Headrick, Todd C. and Pant, Mohan D. "A Method for Simulating Nonnormal Distributions with Specified L -Skew, L -Kurtosis, and L -Correlation." (Jan 2012).

This Article is brought to you for free and open access by the Educational Psychology and Special Education at OpenSIUC. It has been accepted for inclusion in Publications by an authorized administrator of OpenSIUC. For more information, please contact opensiuc@lib.siu.edu.

Research Article

A Method for Simulating Nonnormal Distributions with Specified L -Skew, L -Kurtosis, and L -Correlation

Todd C. Headrick¹ and Mohan D. Pant²

¹ Section on Statistics and Measurement, Department of EPSE, Southern Illinois University Carbondale, 222-J Wham Bldg, Carbondale, IL 62901-4618, USA

² Department of Curriculum and Instruction, University of Texas at Arlington, 320B Science Hall, Arlington, TX 76019, USA

Correspondence should be addressed to Todd C. Headrick, headrick@siu.edu

Received 21 February 2012; Accepted 15 May 2012

Academic Editors: J. R. Fernandez, E. Skubalska-Rafajlowicz, and W. Yeih

Copyright © 2012 T. C. Headrick and M. D. Pant. This is an open access article distributed under the Creative Commons Attribution License, which permits unrestricted use, distribution, and reproduction in any medium, provided the original work is properly cited.

This paper introduces two families of distributions referred to as the symmetric κ and asymmetric κ_L - κ_R distributions. The families are based on transformations of standard logistic pseudo-random deviates. The primary focus of the theoretical development is in the contexts of L -moments and the L -correlation. Also included is the development of a method for specifying distributions with controlled degrees of L -skew, L -kurtosis, and L -correlation. The method can be applied in a variety of settings such as Monte Carlo studies, simulation, or modeling events. It is also demonstrated that estimates of L -skew, L -kurtosis, and L -correlation are superior to conventional product-moment estimates of skew, kurtosis, and Pearson correlation in terms of both relative bias and efficiency when moderate-to-heavy-tailed distributions are of concern.

1. Introduction

Monte Carlo investigations often require the need for univariate or multivariate nonnormal distributions with specified conventional product moments. For example, it is common practice for methodologists to investigate the Type I error and power properties associated with inferential statistics under various degrees of nonnormality. In many cases, these investigations may only require an elementary transformation on standard normal or zero-one uniform deviates to produce nonnormal distributions with specified values of conventional skew and kurtosis. More specifically, the popular power method (PM) [1–3] and the generalized lambda distribution (GLD) [4–6] are two basic transformations that could be used for this purpose.

However, conventional-moment-based estimators of skew and kurtosis have unfavorable attributes insofar as they can be substantially biased, have high variance, or can be

influenced by outliers [7, 8]. In view of this, L -moment-based estimators such as L -skew and L -kurtosis were introduced to address the limitations associated with conventional moment-based estimators. Specifically, some of the advantages that L -moments have over conventional moments are that they (a) exist whenever the mean of the distribution exists, (b) are nearly unbiased for all sample sizes and distributions, and (c) are more robust in the presence of outliers [7–10]. In view of these advantages, both the PM and GLD transformations have been characterized in the context of L -moments to enable the simulation of univariate nonnormal distributions with specified values of L -skew and L -kurtosis [6, 11–13].

In addition to issues of a transformation's simplicity and ease of execution, another important criterion is its ability to simulate nonnormal distributions with specified correlation structures. To meet this criterion, methodologists have extended the conventional-moment-based PM and GLD transformations from univariate to multivariate data generation in the context of the Pearson correlation [2, 3, 14–17]. However, and although these product-moment-based methods are commonly used [3, pages 2-3], they would not make feasible extensions of the univariate L -moment-based PM or GLD transformations because the second L -moment and the L -correlation are based on the coefficient of mean difference and not the variance or standard deviation [7, 8, 18].

Thus, the primary goal of this paper is to derive two families of distributions based on transformations that produce continuous symmetric and asymmetric nonnormal distributions with specified values of L -skew, L -kurtosis, and L -correlation. These two families of distributions are referred to herein as the symmetric κ and asymmetric $\kappa_{\mathcal{L}}\text{-}\kappa_{\mathcal{R}}$ distributions. The proposed transformations are computationally efficient because they only require the knowledge of one or two parameters (κ , or $\kappa_{\mathcal{L}}$, $\kappa_{\mathcal{R}}$) and an algorithm that generates standard logistic pseudo-random deviates. We would note that the proposed transformations are analogs to the L -moment-based Tukey h and hh distributions [19]. However, the κ and $\kappa_{\mathcal{L}}\text{-}\kappa_{\mathcal{R}}$ transformations can generate more leptokurtic and elongated distributions as they are based on the logistic distribution as opposed to the standard normal based h or hh distributions.

The remainder of the paper is outlined as follows. In Section 2, the parametric forms of the probability density function, cumulative distribution function, and other properties associated with the κ and $\kappa_{\mathcal{L}}\text{-}\kappa_{\mathcal{R}}$ distributions are derived. In Section 3, a summary of univariate L -moment theory is first provided. The derivations of the systems of equations for specifying values of L -skew and L -kurtosis for the κ and $\kappa_{\mathcal{L}}\text{-}\kappa_{\mathcal{R}}$ distributions are subsequently provided. The boundary region for feasible combinations of L -skew and L -kurtosis is also provided. In Section 4, the coefficient of L -correlation is first introduced and then the equations are developed for determining intermediate correlations for specified L -correlations between κ and (or) $\kappa_{\mathcal{L}}\text{-}\kappa_{\mathcal{R}}$ distributions. In Section 5, the steps for implementing the new method are described. A numerical example and the results of a simulation are provided to confirm the derivations and compare the new method with its conventional-moment-based counterpart. In Section 6, the results of the simulation are discussed.

2. Methodology

The derivation of the probability density function (pdf) and the cumulative distribution function (cdf) associated with the κ and $\kappa_{\mathcal{L}}\text{-}\kappa_{\mathcal{R}}$ families of distributions begins with the following definitions.

Definition 2.1. Let X be a random variable that has a standard logistic distribution with pdf and cdf expressed as

$$f_X(x) = \frac{e^{-x}}{(1 + e^{-x})^2} \quad (2.1)$$

$$F_X(x) = \Pr(X \leq x) = \frac{1}{(1 + e^{-x})}, \quad -\infty < x < +\infty. \quad (2.2)$$

Let $x = (u, v)$ be the auxiliary variable that maps the parametric curves of (2.1) and (2.2) as

$$f : x \mapsto \mathfrak{R}^2 := f_X(x) = f_X(u, v) = f_X(x, f_X(x)), \quad (2.3)$$

$$F : x \mapsto \mathfrak{R}^2 := F_X(x) = F_X(u, v) = F_X(x, F_X(x)).$$

Definition 2.2. The analytical and empirical forms of the quantile functions for symmetric κ distributions are defined as

$$q(x) = q_\kappa(x) = xe^{\kappa|x|}, \quad (2.4)$$

$$q(X) = q_\kappa(X) = Xe^{\kappa|X|}, \quad (2.5)$$

where κ is a real-valued parameter that controls the tail weight of a distribution.

Definition 2.3. The analytical and empirical forms of the quantile functions for asymmetric κ_L - κ_R distributions are defined as

$$q(x) = q_{\kappa_L, \kappa_R}(x) = \begin{cases} xe^{\kappa_L|x|}, & \text{for } x \leq 0, \\ xe^{\kappa_R|x|}, & \text{for } x \geq 0, \end{cases} \quad (2.6)$$

$$q(X) = q_{\kappa_L, \kappa_R}(X) = \begin{cases} Xe^{\kappa_L|X|}, & \text{for } X \leq 0, \\ Xe^{\kappa_R|X|}, & \text{for } X \geq 0, \end{cases} \quad (2.7)$$

where κ_L (κ_R) is the real-valued parameter that controls the left (right) tail of a κ_L - κ_R distribution. Note that if $\kappa_L = \kappa_R$, then (2.6) and (2.7) are equivalent to the symmetric κ distribution in (2.4) and (2.5).

The explicit forms of the derivatives associated with (2.4) and (2.6) are

$$q'(x) = q'_\kappa(x) = e^{\kappa|x|} + x\kappa e^{\kappa|x|} \frac{d|x|}{dx}, \quad (2.8)$$

$$q'(x) = q'_{\kappa_L, \kappa_R}(x) = \begin{cases} e^{\kappa_L|x|} - x\kappa_L e^{\kappa_L|x|}, & \text{for } x < 0, \\ e^{\kappa_R|x|} + x\kappa_R e^{\kappa_R|x|}, & \text{for } x > 0, \end{cases}$$

where it is assumed that $q'(x) > 0$, that is, the transformations in (2.4) and (2.6) are strictly increasing monotone functions and where $q'(x) = 1$ at $x = 0$ in (2.8).

Proposition 2.4. *If the compositions $f \circ q$ and $F \circ q$ map the parametric curves of $f_{q(x)}(q(x))$ and $F_{q(x)}(q(x))$ where $q(x) = q(u, v)$ as*

$$f \circ q : q(x) \mapsto \mathfrak{R}^2 := f_{q(x)}(q(x)) = f_{q(x)}(q(u, v)) = f_{q(x)}\left(q(x), \frac{f_X(x)}{q'(x)}\right), \quad (2.9)$$

$$F \circ q : q(x) \mapsto \mathfrak{R}^2 := F_{q(x)}(q(x)) = F_{q(x)}(q(u, v)) = F_{q(x)}(q(x), F_X(x)), \quad (2.10)$$

then (2.9) and (2.10) are the parametric forms of the pdf and cdf associated with the quantile functions in $q(X)$ in (2.5) and (2.7), respectively.

Proof. It is first shown that $f_{q(x)}(q(x), f_X(x)/q'(x))$ in (2.9) has the properties:

Property 1. $\int_{-\infty}^{+\infty} f_{q(x)}(q(x), f_X(x)/q'(x)) dx = 1$.

Property 2. $f_{q(x)}(q(x), f_X(x)/q'(x)) \geq 0$, for $-\infty < x < +\infty$.

To prove Property 1, let $v = f(u)$ be a function where $\int_{-\infty}^{+\infty} f(u) du = \int_{-\infty}^{+\infty} v du$. Thus, given that $u = q(x)$ and $v = f_X(x)/q'(x)$ in $f_{q(x)}(q(u, v))$ in (2.9) we have

$$\begin{aligned} \int_{-\infty}^{+\infty} f_{q(x)}\left(q(x), \frac{f_X(x)}{q'(x)}\right) dx &= \int_{-\infty}^{+\infty} v du = \int_{-\infty}^{+\infty} \left(\frac{f_X(x)}{q'(x)}\right) dq(x) \\ &= \int_{-\infty}^{+\infty} \left(\frac{f_X(x)}{q'(x)}\right) q'(x) d(x) = \int_{-\infty}^{+\infty} f_X(x) d(x) = 1, \end{aligned} \quad (2.11)$$

which integrates to one because $f_X(x)$ is the standard logistic pdf in (2.1). To show Property 2, it is given by definition that $f_X(x) \geq 0$ and it is assumed that $q'(x) > 0$. Hence, $f_{q(x)}(q(x), f_X(x)/q'(x)) \geq 0$ because $f_X(x)/q'(x)$ will be nonnegative on the support of x for all $x \in (-\infty, +\infty)$ and where the $\lim_{x \rightarrow \pm\infty} f_{q(x)}(q(x), f_X(x)/q'(x)) = 0$ provided that $\kappa \geq 0$ for symmetric distributions or for the case of asymmetric distributions we must have $\kappa_L \geq 0$ and $\kappa_R \geq 0$. \square

A corollary to Proposition 2.4 is stated as follows.

Corollary 2.5. *The derivative of the cdf $F_{q(x)}(q(x), F_X(x))$ in (2.10) is the pdf $f_{q(x)}(q(x), f_X(x)/q'(x))$ in (2.9).*

Proof. It follows from $u = q(x)$ and $v = F_X(x)$ in $F_{q(x)}(q(u, v))$ in (2.10) that $du = q'(x) dx$ and $dv = f_X(x) dx$. Hence, using the parametric form of the derivative we have $v = dv/du = f_X(x)/q'(x)$ in (2.9). Whence, $F'_{q(x)}(q(x), F_X(x)) = F'_{q(x)}(q(u, dv/du)) = f_{q(x)}(q(u, v)) = f_{q(x)}(q(x), f_X(x)/q'(x))$. Thus, $f_{q(x)}(q(x), f_X(x)/q'(x))$ in (2.9) and $F_{q(x)}(q(x), F_X(x))$ in (2.10) are the parametric forms of the pdf and cdf associated with the quantile functions in (2.5) and (2.7). \square

Remark 2.6. Inspection of (2.1), (2.4), (2.6), and (2.9) indicates that the height of any symmetric κ or asymmetric $\kappa_L\text{-}\kappa_R$ distribution at $x = 0$ will be $f_X(x)/q'(x) = 1/4$.

Definition 2.7. If the monotonicity assumption ($q'(x) > 0$) holds in (2.9) for all $x \in (-\infty, +\infty)$, which requires $\kappa_L, \kappa_R \geq 0$, then (2.9) is defined as a *global* pdf.

Remark 2.8. The mode associated with a global pdf in (2.9) is located at $f_{q(x)}(q(\tilde{x}), f_X(\tilde{x})/q'(\tilde{x}))$, where $x = \tilde{x}$ is the critical number that solves $dv/du = d(f_X(x)/q'(x))/du = 0$ and globally maximizes $v = f_X(\tilde{x})/q'(\tilde{x})$ at $x = q(\tilde{x})$. It is noted that the pdf in (2.9) will have a global maximum because the standard logistic pdf in (2.1) has a global maximum and the transformation $q(x)$ is assumed to be a strictly increasing monotone function.

Remark 2.9. The median associated with a global pdf in (2.9) is located at $q(x = 0) = 0$. This can be shown by letting $u_{0.50} = q(x)$ and $v_{0.50} = 0.50 = F_X(x) = \Pr\{X \leq x\}$ denote the coordinates in the cdf in (2.10) that are associated with the 50th percentile. In general, we must have $x = 0$ such that $v_{0.50} = 0.50 = F_X(0) = \Pr\{X \leq 0\}$ holds in (2.10) for the standard logistic distribution. As such, the limit of the quantile function $q(x)$ locates the median at $\lim_{x \rightarrow 0} q(x) = 0$.

Remark 2.10. The monotonicity assumption ($q'(x) > 0$) also holds in (2.9) for cases where $\kappa_{\mathcal{L}, \mathcal{R}} < 0$ and ($1/\kappa_{\mathcal{L}, \mathcal{R}} < x < 0$ or $0 \leq x < -1/\kappa_{\mathcal{L}, \mathcal{R}}$). This leads to Definition 2.11.

Definition 2.11. A symmetric κ or asymmetric $\kappa_{\mathcal{L}-\kappa_{\mathcal{R}}}$ distribution has a *local* pdf if the monotonicity assumption ($q'(x) > 0$) holds in accordance to Remark (2.5) and from (2.10) $1 - \Pr\{q(x \leq |1/\kappa_{\mathcal{L}, \mathcal{R}}|\}) \leq \gamma$ where γ is a specified threshold probability (e.g. $\gamma = 0.001$).

Figures 1 and 2 give examples of symmetric κ and asymmetric $\kappa_{\mathcal{L}-\kappa_{\mathcal{R}}}$ distributions based on (2.9) and (2.10). Figures 1(a) and 1(b) are examples of symmetric global pdfs. Figure 2(a) is an example of an asymmetric global pdf and Figure 2(b) is an example of an asymmetric local pdf. The point where monotonicity fails for the local pdf in Figure 2(b) is located at $q(x = 1/ -0.0497) = -7.402$ where making use of (2.10) yields $1 - \Pr\{q(x) \leq |-7.402|\} = 0.0006$, which would not pose a serious limitation for most purposes. In the next section the L -moments for κ and $\kappa_{\mathcal{L}-\kappa_{\mathcal{R}}}$ distributions are derived and other distributional properties are discussed after a preliminary discussion of univariate L -moments.

3. L -Moments for κ and $\kappa_{\mathcal{L}-\kappa_{\mathcal{R}}}$ Distributions

3.1. Preliminaries: Univariate L -Moments

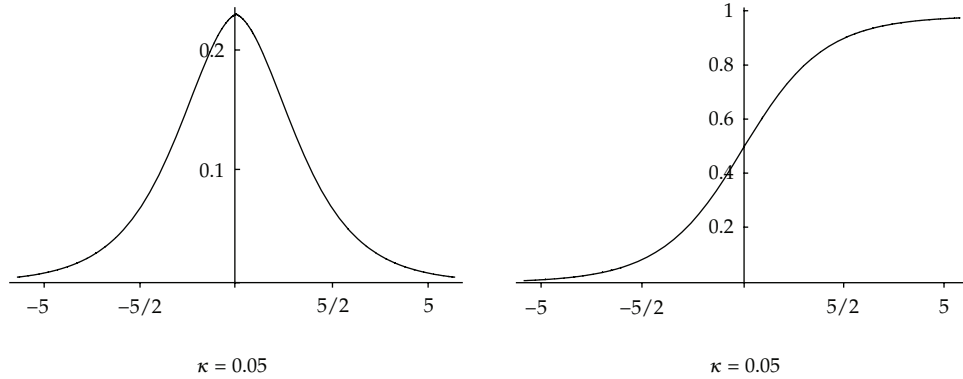
Let $Y_1, \dots, Y_j, \dots, Y_n$ be independent and identically distributed random variables each with continuous pdf $f_Y(y)$, cdf $F_Y(y)$, order statistics denoted as $Y_{1:n} \leq \dots \leq Y_{j:n} \leq \dots \leq Y_{n:n}$, and L -moments defined in terms of either linear combinations of (a) expectations of order statistics or (b) probability-weighted moments (β_i). For the purposes considered herein, the first four L -moments associated with $Y_{j:n}$ are expressed as [8, pages 20–22]

$$\lambda_1 = E[Y_{1:1}] = \beta_0, \quad (3.1)$$

$$\lambda_2 = \frac{1}{2}E[Y_{2:2} - Y_{1:2}] = 2\beta_1 - \beta_0, \quad (3.2)$$

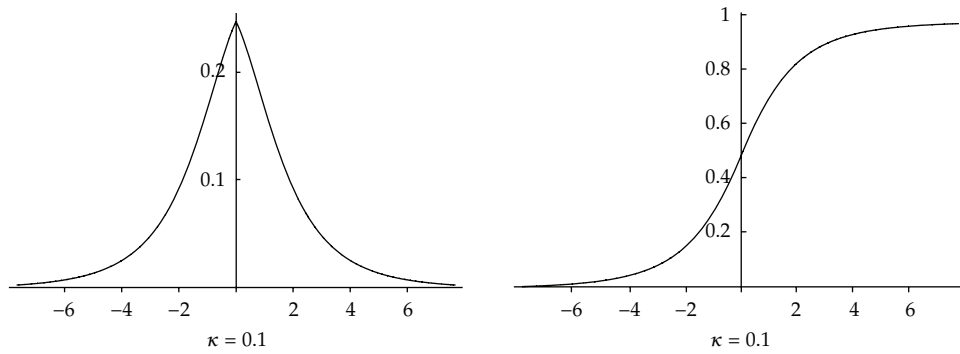
$$\lambda_3 = \frac{1}{3}E[Y_{3:3} - 2Y_{2:3} + Y_{1:3}] = 6\beta_2 - 6\beta_1 + \beta_0, \quad (3.3)$$

$$\lambda_4 = \frac{1}{4}E[Y_{4:4} - 3Y_{3:4} + 3Y_{2:4} - Y_{1:4}] = 20\beta_3 - 30\beta_2 + 12\beta_1 - \beta_0, \quad (3.4)$$



Global pdf characteristics	Parameters	Percentiles
Mean = 0	Skew: $\alpha_3 = 0$	$q(x)_{0.05} = -3.41145$
Median = 0	Kurtosis: $\alpha_4 = 3.585$	$q(x)_{0.25} = -1.16065$
Mode = 0	L-skew: $\tau_3 = 0$	$q(x)_{0.75} = 1.16065$
Max(height) = 0.25	L-kurtosis: $\tau_4 = 0.1876$	$q(x)_{0.95} = 3.41145$

(a)



Global pdf characteristics	Parameters	Percentiles
Mean = 0	Skew: $\alpha_3 = 0$	$q(x)_{0.05} = -3.95255$
Median = 0	Kurtosis: $\alpha_4 = 10.15$	$q(x)_{0.25} = -1.226185$
Mode = 0	L-skew: $\tau_3 = 0$	$q(x)_{0.75} = 1.226185$
Max(height) = 0.25	L-kurtosis: $\tau_4 = 0.2519$	$q(x)_{0.95} = 3.95255$

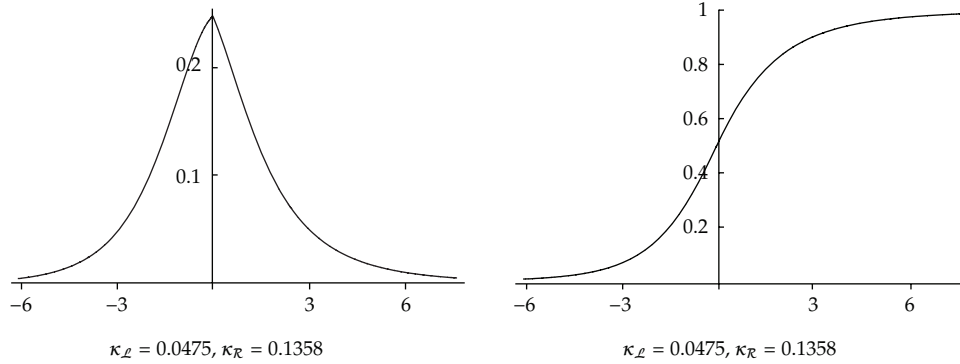
(b)

Figure 1: Two symmetric κ global pdfs and their associated cdfs. The percentiles were computed based on (2.10). The parameters of kurtosis (α_4) and L-kurtosis (τ_4) are based on (A.2) in the appendix and (3.11), respectively.

where the β_i are determined from

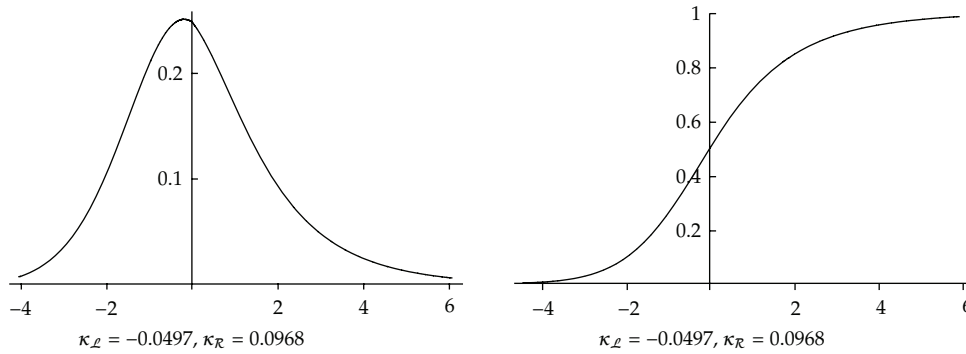
$$\beta_i = \int \mathbf{y} \{F_Y(\mathbf{y})\}^i f_Y(\mathbf{y}) d\mathbf{y}, \quad (3.5)$$

where $i = 0, \dots, 3$. The coefficients associated with β_i in (3.5) are obtained from shifted orthogonal Legendre polynomials and are computed as shown in [8, page 20] or in [11].



Global pdf characteristics	Parameters	Percentiles
Mean = 0.177	Skew: $\alpha_3 = 1.83$	$q(x)_{0.05} = -3.38644$
Median = 0	Kurtosis: $\alpha_4 = 23.48$	$q(x)_{0.25} = -1.157465$
Mode = 0	L -skew: $\tau_3 = 0.1$	$q(x)_{0.75} = 1.275371$
Max(height) = 0.25	L -kurtosis: $\tau_4 = 0.25$	$q(x)_{0.95} = 4.3919$

(a)



Local pdf characteristics	Parameters	Percentiles
Mean = 0.264	Skew: $\alpha_3 = 1.7$	$q(x)_{0.05} = -2.54346$
Median = 0	Kurtosis: $\alpha_4 = 10.34$	$q(x)_{0.25} = -1.04021$
Mode = -0.1986	L -skew: $\tau_3 = 0.15$	$q(x)_{0.75} = 1.22188$
Max(height) = 0.2525	L -kurtosis: $\tau_4 = 0.2$	$q(x)_{0.95} = 3.91545$

(b)

Figure 2: Two asymmetric κ_L - κ_R distributions pdfs and their associated cdfs. The parameters of skew (α_3) and kurtosis (α_4) are based on (A.2) in the appendix. The parameters of L -skew (τ_3) and L -kurtosis (τ_4) are based on (3.15) and (3.16). The distribution in (b) is a local pdf in the range of $q(x) \in (-7.402, +\infty)$.

The L -moments λ_1 and λ_2 in (3.1) and (3.2) are measures of location and scale and are the arithmetic mean and one-half the coefficient of mean difference, respectively. Higher order L -moments are transformed to dimensionless quantities referred to as L -moment ratios defined as $\tau_r = \lambda_r/\lambda_2$ for $r \geq 3$, and where τ_3 and τ_4 are the analogs to the conventional

measures of skew and kurtosis. In general, L -moment ratios are bounded in the interval $-1 < \tau_r < 1$ as the index of L -skew (τ_3) where a symmetric distribution implies that all L -moment ratios with odd subscripts are zero. Other smaller boundaries can be found for more specific cases. For example, the index of L -kurtosis (τ_4) has the boundary condition for continuous distributions of [20]:

$$\frac{5\tau_3^2 - 1}{4} < \tau_4 < 1. \quad (3.6)$$

3.2. L -Moments for Symmetric κ and Asymmetric $\kappa_{\mathcal{L}}\text{-}\kappa_{\mathcal{R}}$ Distributions

The derivation of the first four L -moments associated with symmetric κ distributions begins by defining the probability weighted moments based on (3.5) in terms of $q(x)$ in (2.4) and the standard logistic pdf and cdf in (2.1) and (2.2) as

$$\beta_i = \int_{-\infty}^{+\infty} q(x, \kappa) \{F_X(x)\}^i f_X(x) dx. \quad (3.7)$$

Integrating (3.7) for $i = 0, 1, 2, 3$ and using (3.1)–(3.4) gives $\lambda_1, \lambda_2, \tau_3,$ and τ_4 as

$$\lambda_1 = 0, \quad (3.8)$$

$$\lambda_2 = \frac{1}{2}(2 + \kappa(-4A + 4B + \kappa(C - D))), \quad (3.9)$$

$$\tau_3 = 0, \quad (3.10)$$

$$\tau_4 = \frac{1}{6} \left(1 + 5\kappa^2 + \frac{10\kappa(1 + 2\kappa + 2\kappa^2(H[-(\kappa/2)] - H[-(1/2) - (\kappa/2)]))}{2\lambda_2} \right), \quad (3.11)$$

where $A = \psi[0, (1/2) - (\kappa/2)]$, $B = \psi[0, 1 - (\kappa/2)]$, $C = \psi[1, (1/2) - (\kappa/2)]$, and $D = \psi[1, 1 - (\kappa/2)]$. The notations $\psi[a, b]$ and $H[\cdot]$ in (3.9) and (3.11) are the polygamma and harmonic number functions, respectively. The argument for b must be positive in $\psi[a, b]$ and thus a κ -distribution with a global pdf and defined values of $\lambda_1, \lambda_2, \tau_3, \tau_4$ requires that $0 \leq \kappa < 1$.

The derivation of the L -moments for asymmetric $\kappa_{\mathcal{L}}\text{-}\kappa_{\mathcal{R}}$ distributions associated with (2.6) begins with determining the probability-weighted moments β_i in (3.5) by separately evaluating and summing two integrals as

$$\beta_i = \int_{-\infty}^0 q(x, \kappa_{\mathcal{L}}) \{F_X(x)\}^i f_X(x) dx + \int_0^{+\infty} q(x, \kappa_{\mathcal{R}}) \{F_X(x)\}^i f_X(x) dx. \quad (3.12)$$

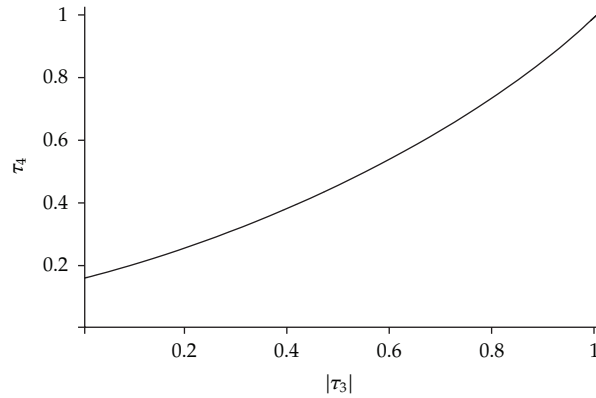


Figure 3: Graph of the region for feasible combinations of (absolute value) L -skew $|\tau_3|$ and L -kurtosis τ_4 for global pdfs. An asymmetric κ_L - κ_R distributions will lie in the area above the curve graphed in the $|\tau_3|$ and τ_4 plane.

As such, using (3.12) to obtain β_0, \dots, β_3 and subsequently substituting these terms into (3.1)–(3.4) we have

$$\lambda_1 = \frac{1}{4}(2A - 2B - 2C + 2D - \kappa_L E + \kappa_L F + \kappa_R G - \kappa_R H), \quad (3.13)$$

$$\lambda_2 = \frac{1}{4}(4 + \kappa_L(-4A + 4B + \kappa_L(E - F)) + 4 + \kappa_R(-4C + 4D + \kappa_R(G - H))), \quad (3.14)$$

$$\tau_3 = \frac{(4\kappa_R - 4\kappa_L + \kappa_L^2(6A - 6B + \kappa_L(F - E)) + \kappa_R^2(-6C + 6D + \kappa_R(G - H)))}{(4\lambda_2)}, \quad (3.15)$$

$$\tau_4 = \frac{\mathfrak{W}}{(24\lambda_2)}, \quad (3.16)$$

where \mathfrak{W} denotes $\{2(2 + 5\kappa_L(1 + 3\kappa_L) + 5\kappa_R(1 + 3\kappa_R)) - 4(\kappa_L + 10\kappa_L^3)A - 4(\kappa_R + 10\kappa_R^3)C + 5\kappa_L((4 + 40\kappa_L^2)B + \kappa_L(1 + 5\kappa_L^2)(E - F) + \kappa_R((4 + 40\kappa_R^2)D + \kappa_R(1 + 5\kappa_R^2)(G - H)))\}$, where the polygamma functions are $A = \psi[0, (1/2) - (\kappa_L/2)]$, $B = \psi[0, 1 - (\kappa_L/2)]$, $C = \psi[0, (1/2) - (\kappa_R/2)]$, $D = \psi[0, 1 - (\kappa_R/2)]$, $E = \psi[1, (1/2) - (\kappa_L/2)]$, $F = \psi[1, 1 - (\kappa_L/2)]$, $G = \psi[1, (1/2) - (\kappa_R/2)]$, and $H = \psi[1, 1 - (\kappa_R/2)]$. Thus, given specified values of τ_3 and τ_4 , (3.15) and (3.16) can be numerically solved to obtain the corresponding values of κ_L and κ_R . Analogous to κ -distributions, an asymmetric κ_L - κ_R distribution with a global pdf and defined values of λ_1 , λ_2 , τ_3 , τ_4 will require both $0 \leq \kappa_L < 1$ and $0 \leq \kappa_R < 1$. Note that careful inspection of (3.15) and (3.16) reveals that interchanging values for the parameters κ_L and κ_R reverse the direction of τ_3 and has no effect on τ_4 . Further, if $\kappa_L = \kappa_R$, then equations (3.13)–(3.16) simplify to (3.8)–(3.11) associated with the symmetric κ family of distributions.

In terms of boundary conditions, the minimum value of L -kurtosis for global pdfs is $\min(\tau_4) = 1/6$ where $\kappa_L = \kappa_R = \kappa = 0$, which is associated with the standard logistic pdf in (2.1). As such, using (3.15) and (3.16) with $\kappa_L = 0$ and $\kappa_R \in [0, 1]$, provided in Figure 3 is a graph of the region for feasible combinations of $|\tau_3|$ and τ_4 for asymmetric κ_L - κ_R global pdfs.

Feasible combinations of L -skew and L -kurtosis for (3.15) and (3.16) will lie in the region above the curve graphed in the $|\tau_3|, \tau_4$ plane of Figure 3.

The conventional-moment-based system for $\kappa_{\mathcal{L}}\text{-}\kappa_{\mathcal{R}}$ distributions is given in the appendix. This system was used to determine the values of skew and kurtosis associated with the distributions given in Figures 1 and 2. It is worthy to point out that the conventional moment based system has a disadvantage in terms of moment existence. That is, the integral in (A.1) of the appendix reveals that for the r th moment to exist we must have $0 \leq \kappa_{\mathcal{L}} < 1/r$ and $0 \leq \kappa_{\mathcal{R}} < 1/r$ to yield appropriate polygamma functions. More specifically, if the mean, variance, skew, and kurtosis exist, then the parameters must be bounded in the range of $0 \leq \kappa_{\mathcal{L}} < 0.25$ and $0 \leq \kappa_{\mathcal{R}} < 0.25$. The advantage that the L -moment system has in this context is attributed to Hosking's Theorem 1 [7] which states that if the mean (λ_1) exists, then all other L -moments will have finite expectations.

Figure 4 provides some additional examples of κ and $\kappa_{\mathcal{L}}\text{-}\kappa_{\mathcal{R}}$ distributions. These distributions will be used in the simulation portion of this study in Section 5. Note that the distributions associated with Figures 4(a) and 4(b) are local pdfs with probabilities at the point where monotonicity fails of $1 - \Pr\{q(x) \leq |-8.2084|\} = 0.00027$ and $1 - \Pr\{q(x) \leq |12.9285|\} = 2.43 \times 10^{-6}$, which do not pose any limitation for the purposes considered herein. In the next section we first introduce the topic of the L -correlation and subsequently develop the methodology for simulating $\kappa_{\mathcal{L}}\text{-}\kappa_{\mathcal{R}}$ (or κ) distributions with specified L -correlations.

4. L -Correlations for $\kappa_{\mathcal{L}}\text{-}\kappa_{\mathcal{R}}$ (or κ) Distributions

4.1. Preliminaries: The L -Correlation

The coefficient of L -correlation [18] is introduced by considering two random variables Y_j and Y_k with distribution functions $F(Y_j)$ and $F(Y_k)$, respectively. The second L -moments of Y_j and Y_k can alternatively be expressed as

$$\lambda_2(Y_j) = 2\text{Cov}(Y_j, F(Y_j)), \quad (4.1)$$

$$\lambda_2(Y_k) = 2\text{Cov}(Y_k, F(Y_k)). \quad (4.2)$$

The second L -comoments of Y_j toward Y_k and Y_k toward Y_j are

$$\lambda_2(Y_j, Y_k) = 2\text{Cov}(Y_j, F(Y_k)), \quad (4.3)$$

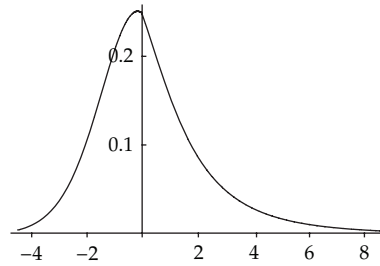
$$\lambda_2(Y_k, Y_j) = 2\text{Cov}(Y_k, F(Y_j)). \quad (4.4)$$

As such, the L -correlations of Y_j toward Y_k and Y_k toward Y_j are expressed as

$$\eta_{jk} = \frac{\lambda_2(Y_j, Y_k)}{\lambda_2(Y_j)} \quad (4.5)$$

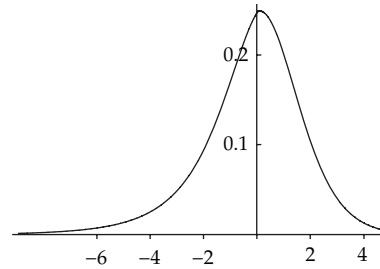
$$\eta_{kj} = \frac{\lambda_2(Y_k, Y_j)}{\lambda_2(Y_k)}. \quad (4.6)$$

Local pdf
 $q(x) \in (-8.2084, +\infty)$
 $\tau_3 = 0.23, \tau_4 = 0.25$
 $\alpha_3 = 4.502, \alpha_4 = 129.5$
 $\kappa_{\mathcal{L}} = -0.0448, \kappa_{\mathcal{R}} = 0.1704$



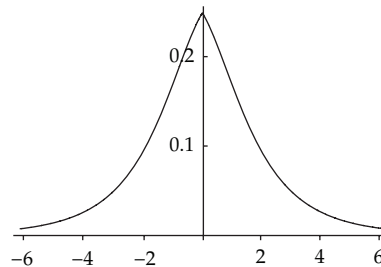
(a)

Local pdf
 $q(x) \in (-\infty, 12.9285)$
 $\tau_3 = -0.12, \tau_4 = 0.2$
 $\alpha_3 = -1.356, \alpha_4 = 7.518$
 $\kappa_{\mathcal{L}} = 0.0874, \kappa_{\mathcal{R}} = -0.0285$



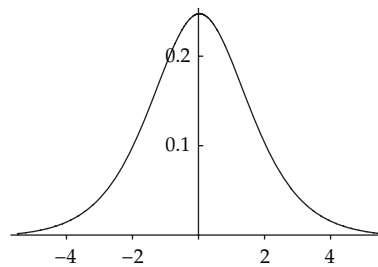
(b)

Global pdf
 $\tau_3 = 0, \tau_4 = 0.25$
 $\alpha_3 = 0, \alpha_4 = 9.674$
 $\kappa = 0.0978$



(c)

Global (logistic) pdf
 $\tau_3 = 0, \tau_4 = 0.1667$
 $\alpha_3 = 0, \alpha_4 = 1.2$
 $\kappa = 0$



(d)

Figure 4: Two asymmetric $\kappa_{\mathcal{L}}\text{-}\kappa_{\mathcal{R}}$ distributions and two symmetric κ distribution with their L -moment and conventional parameters of L -skew (τ_3) and skew (α_3), L -kurtosis (τ_4) and kurtosis (α_4), and corresponding shape parameters for (2.5) and (2.7). Note that in Tables 1–11 (a), (b), (c), (d) are denoted as 1, 2, 3, 4, respectively.

The L -correlation in (4.5) or (4.6) is bounded such that $-1 \leq \eta_{jk} \leq 1$ where a value of $\eta_{jk} = 1$ ($\eta_{jk} = -1$) indicates a strictly increasing (decreasing) *monotone* relationship between the two variables. In general, we would also note that $\eta_{jk} \neq \eta_{kj}$.

4.2. The L -Correlation for $\kappa_{\mathcal{L}}\text{-}\kappa_{\mathcal{R}}$ (or κ) Distributions

In the context of L -moment-based $\kappa_{\mathcal{L}}\text{-}\kappa_{\mathcal{R}}$ (or κ) distributions, suppose it is desired to simulate a T -variate distribution from quantile functions of the form in (2.7) with a specified L -correlation matrix and where each distribution has its own specified values of τ_3 and τ_4 . Let Z_1, \dots, Z_T denote standard normal variables where the distribution functions and bivariate density function associated with Z_j and Z_k are expressed as:

$$\Phi(z_j) = \Pr\{Z_j \leq z_j\} = \int_{-\infty}^{z_j} (2\pi)^{-1/2} \exp\left\{-\frac{w_j^2}{2}\right\} dw_j, \quad (4.7)$$

$$\Phi(z_k) = \Pr\{Z_k \leq z_k\} = \int_{-\infty}^{z_k} (2\pi)^{-1/2} \exp\left\{-\frac{w_k^2}{2}\right\} dw_k, \quad (4.8)$$

$$f_{jk} = \left(2\pi(1 - \rho_{jk}^2)^{1/2}\right)^{-1} \exp\left\{-\left(2(1 - \rho_{jk}^2)\right)^{-1}(z_j^2 + z_k^2 - 2\rho_{jk}z_jz_k)\right\}. \quad (4.9)$$

Using (4.7), it follows that the j th $\kappa_{\mathcal{L}}\text{-}\kappa_{\mathcal{R}}$ distribution associated with (2.7) can be expressed as $q_j(g(\Phi(z_j)))$ where $g(\Phi(z_j)) = \ln(\Phi(z_j)/(1 - \Phi(z_j)))$ is standard logistic because $\Phi(z_j) \sim U(0, 1)$. As such, using (4.5), the L -correlation of $q_j(g(\Phi(z_j)))$ toward $q_k(g(\Phi(z_k)))$ can be evaluated using solved values of $\kappa_{\mathcal{L}_j}$ and $\kappa_{\mathcal{R}_j}$ for $q_j(g(\Phi(z_j)))$, a specified *intermediate correlation* (IC) ρ_{jk} in (4.9), and the following integral expressed as

$$\eta_{jk} = 2\sqrt{\pi} \iint_{-\infty}^{+\infty} s_j\left(q_j\left(g(\Phi(z_j)), \kappa_{\mathcal{L}_j}, \kappa_{\mathcal{R}_j}\right)\right) \Phi(z_k) f_{jk} dz_j dz_k. \quad (4.10)$$

We would point out that the purpose of the IC (ρ_{jk}) in (4.9) and (4.10) is to adjust for the effect of the transformation $q_j(g(\Phi(z_j)))$, which is induced by the $\kappa_{\mathcal{L}_j}$ and $\kappa_{\mathcal{R}_j}$ parameters, such that $q_j(g(\Phi(z_j)))$ has its specified L -correlation (η_{jk}) toward $q_k(g(\Phi(z_k)))$. Further, to simplify the computation, the $\kappa_{\mathcal{L}_j}\text{-}\kappa_{\mathcal{R}_j}$ distribution in (4.10) is standardized by a linear transformation such that it has a mean of zero and one-half the coefficient of mean difference equal to that of the unit-normal distribution as

$$s_j\left(q_j\left(g(\Phi(z_j)), \kappa_{\mathcal{L}_j}, \kappa_{\mathcal{R}_j}\right)\right) = \delta\left(q_j\left(g(\Phi(z_j)), \kappa_{\mathcal{L}_j}, \kappa_{\mathcal{R}_j}\right) - \lambda_1\right), \quad (4.11)$$

where λ_1 is the mean from (3.13) and δ is a constant that scales λ_2 in (3.14) and in the denominator of (4.5) to $1/\sqrt{\pi}$ as

$$\delta = \frac{4}{\left(\sqrt{\pi}\left(8 - 4A\kappa_{\mathcal{L}_j} + 4B\kappa_{\mathcal{L}_j} + E\kappa_{\mathcal{L}_j}^2 - F\kappa_{\mathcal{L}_j}^2 - 4C\kappa_{\mathcal{R}_j} + 4D\kappa_{\mathcal{R}_j} + G\kappa_{\mathcal{R}_j}^2 + H\kappa_{\mathcal{R}_j}^2\right)\right)}. \quad (4.12)$$

```

(*Intermediate Correlation*)
ρjk = 0.678043;

Needs["MultivariateStatistics"]
fjk = PDF[MultinormalDistribution[{0,0}, {{1,ρjk},{ρjk,1}}], {Zj,Zk};
Fj = CDF[NormalDistribution[0,1],Zj];
Fk = CDF[NormalDistribution[0,1],Zk];

(*Parameters for Distribution 4(a) in Figure 4*)
κL = -0.044817709;
κR = 0.1704343967;

X = Log[Fj/(1 - Fj)];

qL = X * Exp[κL * Abs[X]];
qR = X * Exp[κR * Abs[X]];

(* Standardizing constants λ1 from (3.13) and δ from (4.12)*)
SqL = δ * (qL - λ1);
SqR = δ * (qR - λ1);

(*Compute the specified L-correlation*)
ηjk = 2√π * NIntegrate[Piecewise[{{SqL, X ≤ 0}, {SqR, X > 0}]] * Fk * fjk, {Zj, -10, 10},
{Zk, -10, 10}, Method → MultiDimensional]

0.70

```

Algorithm 1: Mathematica source code for computing intermediate correlations for specified L -correlations. The example is for distribution $j = 1$ towards distribution $k = 2$ (η_{12}) in Figure 4 (Panels 4(a) and 4(b)). See also Table 3(a).

Analogously, the L -correlation of $q_k(g(\Phi(z_k)))$ toward $q_j(g(\Phi(z_j)))$ is expressed as

$$\eta_{kj} = 2\sqrt{\pi} \int_{-\infty}^{+\infty} \int_{-\infty}^{+\infty} s_k(q_k(g(\Phi(z_k))), \kappa_{Lk}, \kappa_{Rk}) \Phi(z_j) f_{jk} dz_k dz_j. \quad (4.13)$$

Note also for the special case that if $q_j(g(\Phi(z_j)))$ in (4.10) and $q_k(g(\Phi(z_k)))$ in (4.13) have the same parameters, that is, $\kappa_{Lj} = \kappa_{Lk}$ and $\kappa_{Rj} = \kappa_{Rk}$, then $\eta_{jk} = \eta_{kj}$. Provided in Algorithm 1 is Mathematica [21] source code that implements the computation of an IC (ρ_{jk}) based on (4.10). The details for simulating κ_{L} - κ_{R} (or κ) distributions with specified values of L -skew, L -kurtosis, and L -correlations are described in the next section.

5. The Method and Simulation Study

To implement the method for simulating κ_{L} - κ_{R} (or κ) distributions with specified L -moments and L -correlations we suggest the following six steps.

- (1) Specify the L -moments for T transformations of the form in (2.7), that is, $q_1(g(\Phi(z_1))), \dots, q_T(g(\Phi(z_T)))$ and obtain the solutions for the parameters of κ_{Lj} and κ_{Rj} by solving (3.15) and (3.16) using the specified values of L -skew (τ_3) and

L -kurtosis (τ_4) for each distribution. Specify a $T \times T$ matrix of L -correlations (η_{jk}) for $q_j(g(\Phi(z_j)))$ toward $q_k(g(\Phi(z_k)))$, where $j < k \in \{1, 2, \dots, T\}$.

- (2) Compute the (Pearson) intermediate correlations (ICs) ρ_{jk} by substituting the solutions of κ_{L_j} and κ_{R_j} from Step 1 into (4.10) and then numerically integrate to solve for ρ_{jk} (see Algorithm 1 for an example). Repeat this step separately for all $T(T-1)/2$ pairwise combinations of correlations.
- (3) Assemble the ICs into a $T \times T$ matrix and decompose this matrix using a Cholesky factorization. Note that this step requires the IC matrix to be positive definite.
- (4) Use the results of the Cholesky factorization from Step 3 to generate T standard normal variables (Z_1, \dots, Z_T) correlated at the intermediate levels as follows:

$$\begin{aligned}
 Z_1 &= a_{11}V_1, \\
 Z_2 &= a_{12}V_1 + a_{22}V_2, \\
 &\vdots \\
 Z_j &= a_{1j}V_1 + a_{2j}V_2 + \dots + a_{ij}V_i + \dots + a_{jj}V_j \\
 &\vdots \\
 Z_T &= a_{1T}V_1 + a_{2T}V_2 + \dots + a_{iT}V_i + \dots + a_{jT}V_j + \dots + a_{TT}V_T,
 \end{aligned} \tag{5.1}$$

where V_1, \dots, V_T are independent standard normal random variables and where a_{ij} represents the element in the i th row and the j th column of the matrix associated with the Cholesky factorization performed in Step 3.

- (5) Substitute Z_1, \dots, Z_T from Step 4 into the following Taylor series-based expansion for the standard normal cdf [22]:

$$\Phi(Z_j) = \left(\frac{1}{2}\right) + \phi(Z_j) \left\{ Z_j + \frac{Z_j^3}{3} + \frac{Z_j^5}{(3 \cdot 5)} + \frac{Z_j^7}{(3 \cdot 5 \cdot 7)} + \dots \right\}, \tag{5.2}$$

where $\phi(Z_j)$ denotes the standard normal pdf and where the absolute error associated with (5.2) is less than 8×10^{-16} .

- (6) Substitute the zero-one uniform deviates, $\Phi(Z_j)$, generated from Step 5 into the T equations of the form of $q_j(g(\Phi(z_j)))$, where $g(\Phi(z_j)) = \ln(\Phi(z_j)/(1 - \Phi(z_j)))$ is standard logistic to generate the κ_{L-R} distributions with the specified L -moments and L -correlations.

To demonstrate the steps above and evaluate the proposed method, a comparison between the proposed L -moment and conventional product-moment based procedures is subsequently described. Specifically, the distributions in Figure 4 are used as a basis for a comparison using the specified correlation matrices in Table 1 where both strong and moderate levels of correlation are considered. Tables 2 and 3 give the solved IC matrices for

Table 1: Specified correlation matrices for the distributions in Figure 4.

(a)				
	1	2	3	4
1	1			
2	0.70	1		
3	0.70	0.70	1	
4	0.85	0.70	0.70	1

(b)				
	1	2	3	4
1	1			
2	0.40	1		
3	0.50	0.40	1	
4	0.60	0.50	0.40	1

Table 2: Intermediate correlations for the conventional moment procedure.

(a)				
	1	2	3	4
1	1			
2	0.850758	1		
3	0.781157	0.737229	1	
4	0.942741	0.721594	0.720942	1

(b)				
	1	2	3	4
1	1			
2	0.482879	1		
3	0.571693	0.428504	1	
4	0.673333	0.518208	0.415569	1

Table 3: Intermediate correlations for the *L*-moment procedure.

(a)				
	1	2	3	4
1	1			
2	0.678043	1		
3	0.678043	0.687374	1	
4	0.835100	0.687374	0.678876	1

(b)				
	1	2	3	4
1	1			
2	0.380048	1		
3	0.477524	0.388439	1	
4	0.576716	0.487002	0.381013	1


```

(*Intermediate Correlation*)
ρjk = 0.673333;

Needs["MultivariateStatistics"]
fjk = PDF[MultinormalDistribution[{0,0},{{1,ρjk},{ρjk,1}}],{Zj,Zk};
Fj = CDF[NormalDistribution[0,1],Zj];
Fk = CDF[NormalDistribution[0,1],Zk];

(*Parameters for Distributions 4(a) and 4(d) in Figure 4*)
κLj = -0.044817709;
κRj = 0.1704343967;
κLk = 0.0;
κRk = 0.0;

Xj = Log[Fj/(1 - Fj)];
Xk = Log[Fk/(1 - Fk)];

qLj = Xj * Exp[κLj * Abs[Xj]];
qRj = Xj * Exp[κRj * Abs[Xj]];
qLk = Xk * Exp[κLk * Abs[Xk]];
qRk = Xk * Exp[κRk * Abs[Xk]];

(*Standardizing constants λ1 from (3.13) and α2 from (A.2) from the appendix*)
SqLj = (qLj - λ1j)/α2j;
SqRj = (qRj - λ1j)/α2j;
SqLk = (qLk - λ1k)/α2k;
SqRk = (qRk - λ1k)/α2k;

(*Compute the specified conventional Pearson correlation*)
ρjk* = NIntegrate[Piecewise[{{SqLj, Xj ≤ 0}, {SqRj, Xj > 0}}] * Piecewise[{{SqLk, Xk ≤ 0},
{SqRk, Xk > 0}]]*
fjk, {Zj, -10, 10}, {Zk, -10, 10}, Method → MultiDimensional]

0.60

```

Algorithm 2: Mathematica source code for computing intermediate correlations for specified conventional Pearson correlations. The example is for distributions $j = 1$ and $k = 4$ (ρ_{34}^*) in Figure 4 (Panels 4(a) and 4(d)). See also Table 2(b).

the conventional moment and L -moment-based methods, respectively. See Algorithm 2 for an example for computing ICs for the conventional method. Tables 4 and 5 give the results of the Cholesky decompositions on the IC matrices, which are then used to create Z_1, \dots, Z_4 with the specified ICs by making use of the formulae given in (5.1) of Step 4 with $T = 4$. The values of Z_1, \dots, Z_4 are subsequently transformed to $\Phi(Z_1), \dots, \Phi(Z_4)$ using (4.2) and then substituted into equations of the form in (2.5) and (2.7) to produce $q_1(g(\Phi(z_1))), \dots, q_4(g(\Phi(z_4)))$ for both methods.

In terms of the simulation, a Fortran algorithm was written for both methods to generate 25,000 independent sample estimates for the specified parameters of: (a) conventional skew (α_3), kurtosis (α_4), and Pearson correlation (ρ_{jk}^*) and (b) L -skew (τ_3), L -kurtosis (τ_4), and L -correlation (η_{jk}). All estimates were based on sample sizes of $n = 25$ and $n = 1000$. The formulae used for computing estimates of $\alpha_{3,4}$ were based on Fisher's

Table 4: Cholesky decompositions for the conventional moment procedure.

(a)			
$a_{11} = 1$	$a_{12} = 0.850758$	$a_{13} = 0.781157$	$a_{14} = 0.942741$
0	$a_{22} = 0.525558$	$a_{23} = 0.138241$	$a_{24} = -0.153076$
0	0	$a_{33} = 0.608838$	$a_{34} = 0.009320$
0	0	0	$a_{44} = 0.296176$
(b)			
$a_{11} = 1$	$a_{12} = 0.482879$	$a_{13} = 0.571693$	$a_{14} = 0.673333$
0	$a_{22} = 0.875687$	$a_{23} = 0.174087$	$a_{24} = 0.220478$
0	0	$a_{33} = 0.801786$	$a_{34} = -0.009670$
0	0	0	$a_{44} = 0.705634$

Table 5: Cholesky decompositions for the L -moment procedure.

(a)			
$a_{11} = 1$	$a_{12} = 0.678043$	$a_{13} = 0.678043$	$a_{14} = 0.835100$
0	$a_{22} = 0.735022$	$a_{23} = 0.309694$	$a_{24} = 0.164812$
0	0	$a_{33} = 0.666594$	$a_{34} = 0.092412$
0	0	0	$a_{44} = 0.516629$
(b)			
$a_{11} = 1$	$a_{12} = 0.380048$	$a_{13} = 0.477524$	$a_{14} = 0.576716$
0	$a_{22} = 0.924967$	$a_{23} = 0.223745$	$a_{24} = 0.289548$
0	0	$a_{33} = 0.849652$	$a_{34} = 0.048058$
0	0	0	$a_{44} = 0.762398$

k -statistics, that is, the formulae currently used by most commercial software packages such as SAS, SPSS, Minitab, for computing indices of skew and kurtosis (where $\alpha_{3,4} = 0$ for the standard normal distribution). The formulae used for computing estimates of $\tau_{3,4}$ were Headrick's Equations 2.4 and 2.6 [11]. The estimate for ρ_{jk}^* was based on the usual formula for the Pearson product moment of correlation statistic and the estimate for η_{jk} was computed based on (4.5) using the empirical forms of the cdfs in (4.1) and (4.3). The estimates for ρ_{jk}^* and η_{jk} were both transformed using Fisher's z' transformation. Bias-corrected accelerated bootstrapped average estimates, confidence intervals (C.I.s), and standard errors were subsequently obtained for the estimates associated with the parameters ($\alpha_{3,4}$, $\tau_{3,4}$, $z'_{\rho_{jk}^*}$, $z'_{\eta_{jk}}$) using 10,000 resamples via the commercial software package Spotfire S+ [23]. The bootstrap results for the estimates of $z'_{\rho_{jk}^*}$ and $z'_{\eta_{jk}}$ were transformed back to their original metrics. Further, if a parameter (P) was outside its associated bootstrap C.I., then an index of relative bias (RB) was computed for the estimate (E) as: $RB = ((E - P)/P) \times 100$. The results of the simulation are reported in Tables 6–11 and are discussed in the next section.

6. Discussion and Conclusion

Headrick [11] demonstrated the advantages that L -moment ratios have over conventional-moment-based estimators in terms of relative bias and efficiency when sampling was

Table 6: Skew (α_3) and Kurtosis (α_4) results for the conventional moment procedure.

(a) $n = 25$

Dist	Parameter	Estimate	95% Bootstrap C.I.	Standard error	Relative bias %
1	$\alpha_3 = 4.502$	1.259	1.246, 1.272	0.0065	-72.0
	$\alpha_4 = 129.5$	3.286	3.230, 3.340	0.0280	-97.5
2	$\alpha_3 = -1.356$	-0.6655	-0.6756, -0.6551	0.0053	-50.9
	$\alpha_4 = 7.518$	1.657	1.625, 1.694	0.0175	-78.0
3	$\alpha_3 = 0$	0.0093	-0.0052, 0.0228	0.0071	—
	$\alpha_4 = 9.674$	2.374	2.335, 2.411	0.0194	-75.5
4	$\alpha_3 = 0$	0.0068	-0.0016, 0.0150	0.0042	—
	$\alpha_4 = 1.2$	0.7011	0.6826, 0.7202	0.0096	-41.6

(b) $n = 1000$

Dist	Parameter	Estimate	95% bootstrap C.I.	Standard error	Relative bias %
1	$\alpha_3 = 4.502$	3.285	3.260, 3.311	0.0128	-27.0
	$\alpha_4 = 129.5$	29.16	28.56, 29.75	0.3057	-77.5
2	$\alpha_3 = -1.356$	-1.286	-1.293, -1.279	0.0037	-5.2
	$\alpha_4 = 7.518$	6.260	6.157, 6.373	0.0555	-16.7
3	$\alpha_3 = 0$	-0.0011	-0.0110, 0.0090	0.0051	—
	$\alpha_4 = 9.674$	8.016	7.897, 8.152	0.0644	-17.1
4	$\alpha_3 = 0$	-0.0003	-0.0019, 0.0019	0.0010	—
	$\alpha_4 = 1.2$	1.179	1.173, 1.185	0.0033	-1.79

Table 7: L -skew (τ_3) and L -kurtosis (τ_4) results.

(a) $n = 25$

Dist	Parameter	Estimate	95% bootstrap C.I.	Stand. error	Relative bias %
1	$\tau_3 = 0.23$	0.2043	0.2026, 0.2061	0.00091	-11.2
	$\tau_4 = 0.25$	0.2343	0.2329, 0.2357	0.00072	-6.3
2	$\tau_3 = -0.12$	-0.1075	-0.1090, -0.1059	0.00086	-10.4
	$\tau_4 = 0.20$	0.1942	0.1931, 0.1954	0.00058	-2.9
3	$\tau_3 = 0$	0.0015	-0.0004, 0.0034	0.00098	—
	$\tau_4 = 0.25$	0.2413	0.2400, 0.2425	0.00063	-3.5
4	$\tau_3 = 0$	0.00116	-0.00027, 0.00249	0.00070	—
	$\tau_4 = 0.1667$	0.1654	0.1644, 0.1664	0.00050	-0.76

(b) $n = 1000$

Dist	Parameter	Estimate	95% bootstrap C.I.	Stand. error	Relative bias %
1	$\tau_3 = 0.23$	0.2291	0.2287, 0.2294	0.00017	-0.39
	$\tau_4 = 0.25$	0.2494	0.2492, 0.2497	0.00013	-0.24
2	$\tau_3 = -0.12$	-0.1197	-0.1200, -0.1195	0.00013	—
	$\tau_4 = 0.20$	0.1999	0.1997, 0.2001	0.00009	—
3	$\tau_3 = 0$	-0.0001	-0.0004, 0.0003	0.00017	—
	$\tau_4 = 0.25$	0.2498	0.2496, 0.2500	0.00010	—
4	$\tau_3 = 0$	-0.00004	-0.00026, 0.00016	0.00011	—
	$\tau_4 = 0.1667$	0.1667	0.1665, 0.1668	0.00007	—

Table 8: Correlation (strong) results for the conventional moment procedure.

(a) $n = 25$				
Parameter	Estimate	95% bootstrap C.I.	Standard error	Relative bias%
$\rho_{12}^* = 0.70$	0.7857	0.7846, 0.7863	0.00114	12.24
$\rho_{13}^* = 0.70$	0.7528	0.7515, 0.7541	0.00148	7.54
$\rho_{14}^* = 0.85$	0.9083	0.9079, 0.9088	0.00125	6.86
$\rho_{23}^* = 0.70$	0.7277	0.7264, 0.7290	0.00141	3.96
$\rho_{24}^* = 0.70$	0.7178	0.7165, 0.7190	0.00133	2.54
$\rho_{34}^* = 0.70$	0.7185	0.7172, 0.7198	0.00138	2.64

(b) $n = 1000$				
Parameter	Estimate	95% bootstrap C.I.	Standard error	Relative bias%
$\rho_{12}^* = 0.70$	0.7145	0.7141, 0.7149	0.00044	2.07
$\rho_{13}^* = 0.70$	0.7073	0.7069, 0.7077	0.00037	1.04
$\rho_{14}^* = 0.85$	0.8615	0.8610, 0.8617	0.00067	1.35
$\rho_{23}^* = 0.70$	0.7046	0.7043, 0.7048	0.00026	0.66
$\rho_{24}^* = 0.70$	0.7009	0.7006, 0.7011	0.00022	0.13
$\rho_{34}^* = 0.70$	0.7011	0.7009, 0.7013	0.00022	0.16

Table 9: Correlation (strong) results for the L -moment procedure.

(a) $n = 25$				
Parameter	Estimate	95% bootstrap C.I.	Standard error	Relative bias%
$\eta_{12} = 0.70$	0.7069	0.7053, 0.7083	0.00153	0.99
$\eta_{13} = 0.70$	0.7066	0.7050, 0.7081	0.00156	0.94
$\eta_{14} = 0.85$	0.8543	0.8535, 0.8552	0.00158	0.51
$\eta_{23} = 0.70$	0.7078	0.7063, 0.7092	0.00147	1.11
$\eta_{24} = 0.70$	0.7079	0.7065, 0.7094	0.00147	1.13
$\eta_{34} = 0.70$	0.7069	0.7054, 0.7083	0.00149	0.99

(b) $n = 1000$				
Parameter	Estimate	95% bootstrap C.I.	Standard error	Relative bias%
$\eta_{12} = 0.70$	0.6999	0.6997, 0.7002	0.00024	—
$\eta_{13} = 0.70$	0.7002	0.6999, 0.7004	0.00024	—
$\eta_{14} = 0.85$	0.8500	0.8499, 0.8502	0.00024	—
$\eta_{23} = 0.70$	0.6999	0.6997, 0.7001	0.00022	—
$\eta_{24} = 0.70$	0.7001	0.6998, 0.7003	0.00022	—
$\eta_{34} = 0.70$	0.7001	0.6999, 0.7003	0.00022	—

from power method distributions with either moderate or heavy tails. Inspection of the simulation results in Table 6 and Table 7 of this study clearly indicates that this is also the case for the family of κ and $\kappa_{\mathcal{L}}\text{-}\kappa_{\mathcal{R}}$ distributions. Specifically, the superiority that estimates of L -moment ratios (τ_3, τ_4) have over their corresponding conventional-moment-based counterparts (α_3, α_4) is obvious. For example, with samples of size $n = 25$ the estimates of skew and kurtosis for Distribution 1 were, on average, only 28% and 2.5% of their associated population parameters, whereas the estimates of L -skew and L -kurtosis were 88.8% and 93.7% of their respective parameters. It is also evident from comparing Tables 6 and 7 that

Table 10: Correlation (moderate) results for the conventional moment procedure.

(a) $n = 25$				
Parameter	Estimate	95% bootstrap C.I.	Standard error	Relative bias%
$\rho_{12}^* = 0.40$	0.4517	0.4498, 0.4536	0.00123	12.93
$\rho_{13}^* = 0.50$	0.5492	0.5473, 0.5512	0.00143	9.84
$\rho_{14}^* = 0.60$	0.6505	0.6490, 0.6520	0.00134	8.42
$\rho_{23}^* = 0.40$	0.4226	0.4203, 0.4247	0.00137	5.65
$\rho_{24}^* = 0.50$	0.5170	0.5150, 0.5189	0.00135	3.40
$\rho_{34}^* = 0.40$	0.4155	0.4133, 0.4178	0.00136	3.88

(b) $n = 1000$				
Parameter	Estimate	95% bootstrap C.I.	Standard error	Relative bias%
$\rho_{12}^* = 0.40$	0.4076	0.4072, 0.4079	0.00023	1.90
$\rho_{13}^* = 0.50$	0.5061	0.5057, 0.5066	0.00030	1.22
$\rho_{14}^* = 0.60$	0.6071	0.6067, 0.6075	0.00031	1.18
$\rho_{23}^* = 0.40$	0.4026	0.4023, 0.4030	0.00022	0.65
$\rho_{24}^* = 0.50$	0.5014	0.5011, 0.5017	0.00021	0.28
$\rho_{34}^* = 0.40$	0.4007	0.4004, 0.4011	0.00021	0.18

Table 11: Correlation (moderate) results for the L -moment procedure.

(a) $n = 25$				
Parameter	Estimate	95% bootstrap C.I.	Standard error	Relative bias%
$\eta_{12} = 0.40$	0.4075	0.4048, 0.4100	0.00157	1.88
$\eta_{13} = 0.50$	0.5060	0.5036, 0.5081	0.00156	1.20
$\eta_{14} = 0.60$	0.6065	0.6044, 0.6083	0.00156	1.08
$\eta_{23} = 0.40$	0.4071	0.4048, 0.4096	0.00147	1.78
$\eta_{24} = 0.50$	0.5083	0.5060, 0.5103	0.00148	1.66
$\eta_{34} = 0.40$	0.4068	0.4042, 0.4091	0.00149	1.70

(b) $n = 1000$				
Parameter	Estimate	95% bootstrap C.I.	Standard error	Relative bias%
$\eta_{12} = 0.40$	0.4000	0.3996, 0.4004	0.00024	—
$\eta_{13} = 0.50$	0.5001	0.4997, 0.5005	0.00024	—
$\eta_{14} = 0.60$	0.6002	0.5999, 0.6004	0.00024	—
$\eta_{23} = 0.40$	0.3996	0.3993, 0.4000	0.00022	—
$\eta_{24} = 0.50$	0.5001	0.4998, 0.5004	0.00022	—
$\eta_{34} = 0.40$	0.4000	0.3996, 0.4003	0.00022	—

L -skew and L -kurtosis are more efficient estimators as their relative standard errors $RSE = (\text{standard error}/\text{estimate}) \times 100$ are substantially smaller than the conventional estimators of skew and kurtosis. For example, in terms of Distribution 1 ($n = 1000$), inspection of Tables 6 and 7 indicates $RSE(\hat{\alpha}_3) = 0.390\%$ and $RSE(\hat{\alpha}_4) = 1.05\%$ compared with $RSE(\hat{\tau}_3) = 0.074\%$ and $RSE(\hat{\tau}_4) = 0.052\%$. This demonstrates that L -skew and L -kurtosis have more precision because they have less variance around their estimates.

Presented in Tables 8–11 are the results associated with the conventional Pearson and L -correlations. Overall inspection of these tables indicates that the L -correlation is

substantially superior to the Pearson correlation in terms of relative bias. For example, in terms of strong correlations ($n = 25$) the relative bias for the two heavier tailed distributions (distributions 1 and 2) was 12.24% for the Pearson correlation compared to only 0.99% for the L -correlation. Further, for large sample sizes ($n = 1000$), the L -correlation bootstrap C.I.s contained all of the population parameters, whereas the Pearson correlation C.I.s contained none of the parameters. It is also noted that the variability of the L -correlation appears to be more stable than that of the Pearson correlation both within and across the different conditions.

In summary, the new L -moment-based method is an attractive alternative to the traditional conventional-moment-based procedure. In particular, the L -moment based procedure has distinct advantages when distributions with moderate and heavy tails are used. Finally, we would note that Mathematica Version 8.0 [21] source code is available from the authors for implementing the L -moment-based method.

Appendix

A. System of Conventional-Moment-Based Equations for $\kappa_{\mathcal{L}}\text{-}\kappa_{\mathcal{R}}$ Distributions

The moments ($\mu_{r=1,\dots,4}$) associated with (2.7) can be determined from

$$\mu_r = \int_{-\infty}^0 q(x, \kappa_{\mathcal{L}})^r f_X(x) dx + \int_0^{+\infty} q(x, \kappa_{\mathcal{R}})^r f_X(x) dx. \quad (\text{A.1})$$

The mean, variance, skew, and kurtosis are in general (e.g., [24])

$$\begin{aligned} \alpha_1 &= \mu_1, \\ \alpha_2^2 &= \mu_2 - \mu_1^2, \\ \alpha_3 &= \frac{(\mu_3 - 3\mu_2\mu_1 + 2\mu_1^3)}{\alpha_2^{3/2}}, \\ \alpha_4 &= \frac{(\mu_4 - 4\mu_3\mu_1 - 3\mu_2^2 + 12\mu_2\mu_1^2 - 6\mu_1^4)}{\alpha_2^2}. \end{aligned} \quad (\text{A.2})$$

The moments associated with the location and scale parameters in (A.2) are

$$\alpha_1 = \mu_1 = \frac{1}{4}(2A - 2B - 2C + 2D - \kappa_{\mathcal{L}}E + \kappa_{\mathcal{L}}F + \kappa_{\mathcal{R}}G - \kappa_{\mathcal{R}}H), \quad (\text{A.3})$$

$$\begin{aligned} \mu_2 &= \frac{1}{2} \left(\kappa_{\mathcal{L}} \text{HZ} \left[3, \frac{1}{2} - \kappa_{\mathcal{L}} \right] - \kappa_{\mathcal{L}} \text{HZ} [3, 1 - \kappa_{\mathcal{L}}] + E + F \right) \\ &+ \frac{1}{2} \left(\kappa_{\mathcal{R}} \text{HZ} \left[3, \frac{1}{2} - \kappa_{\mathcal{R}} \right] - \kappa_{\mathcal{R}} \text{HZ} [3, 1 - \kappa_{\mathcal{R}}] + G - I \right), \end{aligned} \quad (\text{A.4})$$

where the polygamma functions are $A = \psi[0, (1/2) - (\kappa_{\mathcal{L}}/2)]$, $B = \psi[0, 1 - \kappa_{\mathcal{L}}/2]$, $C = \psi[0, (1/2) - (\kappa_{\mathcal{R}}/2)]$, $D = \psi[0, 1 - (\kappa_{\mathcal{R}}/2)]$, $E = \psi[1, (1/2) - (\kappa_{\mathcal{L}}/2)]$, $F = \psi[1, 1 - (\kappa_{\mathcal{L}}/2)]$, $G = \psi[1, (1/2) - (\kappa_{\mathcal{R}}/2)]$, and $H = \psi[1, 1 - (\kappa_{\mathcal{R}}/2)]$, $I = \psi[1, 1 - \kappa_{\mathcal{R}}]$.

The notation $\text{HZ}[\cdot]$ is the Hurwitz zeta function. The moments related to skew and kurtosis are as follows:

$$\mu_3 = \frac{3}{16} \left(2J - 2K - \kappa_{\mathcal{L}}L + \kappa_{\mathcal{L}}M + \frac{3}{8} \left(N + 2Z \left[3, \frac{1}{2}(1 - 3\kappa_{\mathcal{R}}) \right] + 3\kappa_{\mathcal{R}}Z \left[4, \frac{1}{2}(1 - 3\kappa_{\mathcal{R}}) \right] - 3\kappa_{\mathcal{R}}Z \left[4, 1 - \frac{3\kappa_{\mathcal{R}}}{2} \right] \right) \right), \quad (\text{A.5})$$

$$\mu_4 = \frac{1}{8} (O - P - \kappa_{\mathcal{L}}Q + \kappa_{\mathcal{L}}R) + \frac{1}{8} (2S - 2T - \kappa_{\mathcal{R}}U + \kappa_{\mathcal{R}}V), \quad (\text{A.6})$$

where $J = \psi[2, (1/2) - (3\kappa_{\mathcal{L}}/2)]$, $K = \psi[2, 1 - (3\kappa_{\mathcal{L}}/2)]$, $L = \psi[3, (1/2) - (3\kappa_{\mathcal{L}}/2)]$, $M = \psi[3, 1 - (3\kappa_{\mathcal{L}}/2)]$, $N = \psi[2, 1 - (3\kappa_{\mathcal{R}}/2)]$, $O = \psi[3, (1/2) - 2\kappa_{\mathcal{L}}]$, $P = \psi[3, 1 - 2\kappa_{\mathcal{L}}]$, $Q = \psi[4, (1/2) - 2\kappa_{\mathcal{L}}]$, $R = \psi[4, 1 - 2\kappa_{\mathcal{L}}]$, $S = \psi[3, (1/2) - 2\kappa_{\mathcal{R}}]$, $T = \psi[3, 1 - 2\kappa_{\mathcal{R}}]$, $U = \psi[4, (1/2) - 2\kappa_{\mathcal{R}}]$, $V = \psi[4, 1 - 2\kappa_{\mathcal{R}}]$. The notation $Z[\cdot]$ in (A.5) is the zeta function. Note that the moments for symmetric κ distributions can be easily obtained by setting $\kappa_{\mathcal{L}} = \kappa_{\mathcal{R}} = \kappa$ in (A.3)–(A.6) and simplifying.

References

- [1] A. I. Fleishman, "A method for simulating non-normal distributions," *Psychometrika*, vol. 43, no. 4, pp. 521–532, 1978.
- [2] T. C. Headrick, "Fast fifth-order polynomial transforms for generating univariate and multivariate nonnormal distributions," *Computational Statistics & Data Analysis*, vol. 40, no. 4, pp. 685–711, 2002.
- [3] T. C. Headrick, *Statistical Simulation: Power Method Polynomials and other Transformations*, Chapman and Hall/CRC, Boca Raton, Fla, USA, 2010.
- [4] J. S. Ramberg and B. W. Schmeiser, "An approximate method for generating asymmetric random variables," *Communications of the ACM*, vol. 17, pp. 78–82, 1974.
- [5] J. S. Ramberg, E. J. Dudewicz, P. R. Tadikamalla, and E. F. Mykytka, "A probability distribution and its uses in fitting data," *Technometrics*, vol. 21, no. 2, pp. 201–214, 1979.
- [6] Z. A. Karian and E. J. Dudewicz, *Handbook of Fitting Statistical Distributions with R*, Chapman and Hall/CRC Press, Boca Raton, Fla, USA, 2011.
- [7] J. R. M. Hosking, "L-moments: analysis and estimation of distributions using linear combinations of order statistics," *Journal of the Royal Statistical Society B*, vol. 52, no. 1, pp. 105–124, 1990.
- [8] J. R. M. Hosking and J. R. Wallis, *Regional Frequency Analysis: An Approach Based on L-Moments*, Cambridge University Press, Cambridge, UK, 1997.
- [9] R. M. Vogel and N. M. Fennessey, "L-moment diagrams should replace product moment diagrams," *Water Resources Research*, vol. 29, no. 6, pp. 1745–1752, 1993.
- [10] F. A. Hodis, T. C. Headrick, and Y. Sheng, "Power method distributions through conventional moments and Lmoments," *Applied Mathematical Sciences*, vol. 6, no. 44, pp. 2159–2193, 2012.
- [11] T. C. Headrick, "A characterization of power method transformations through L-moments," *Journal of Probability and Statistics*, vol. 2011, Article ID 497463, 22 pages, 2011.
- [12] W. H. Asquith, "Lmoments and TL-moments of the generalized lambda distribution," *Computational Statistics & Data Analysis*, vol. 51, no. 9, pp. 4484–4496, 2007.
- [13] J. Karvanen and A. Nuutinen, "Characterizing the generalized lambda distribution by L-moments," *Computational Statistics & Data Analysis*, vol. 52, no. 4, pp. 1971–1983, 2008.
- [14] C. D. Vale and V. A. Maurelli, "Simulating multivariate nonnormal distributions," *Psychometrika*, vol. 48, no. 3, pp. 465–471, 1983.

- [15] T. C. Headrick and S. S. Sawilowsky, "Simulating correlated multivariate nonnormal distributions: extending the Fleishman power method," *Psychometrika*, vol. 64, no. 1, pp. 25–35, 1999.
- [16] C. J. Corrado, "Option pricing based on the generalized lambda distribution," *Journal of Future Markets*, vol. 21, no. 3, pp. 213–236, 2001.
- [17] T. C. Headrick and A. Mugdadi, "On simulating multivariate non-normal distributions from the generalized lambda distribution," *Computational Statistics & Data Analysis*, vol. 50, no. 11, pp. 3343–3353, 2006.
- [18] R. Serfling and P. Xiao, "A contribution to multivariate L -moments: L -comoment matrices," *Journal of Multivariate Analysis*, vol. 98, no. 9, pp. 1765–1781, 2007.
- [19] T. C. Headrick and M. D. Pant, "Characterizing Tukey h and hh -distributions through L moments and the L correlation," *ISRN Applied Mathematics*, vol. 2012, Article ID 980153, 20 pages, 2012.
- [20] M. C. Jones, "On some expressions for variance, covariance, skewness and L -moments," *Journal of Statistical Planning and Inference*, vol. 126, no. 1, pp. 97–106, 2004.
- [21] Wolfram Research, *Mathematica, Version 8.0*, Wolfram Research, Champaign, Ill, USA, 2010.
- [22] G. Marsaglia, "Evaluating the normal distribution," *Journal of Statistical Software*, vol. 11, no. 5, pp. 1–11, 2004.
- [23] *TIBCO Spotfire S+ 8.1 for Windows*, TIBCO Software, Palo Alto, Calif, USA, 2008.
- [24] T. C. Headrick, R. K. Kowalchuk, and Y. Sheng, "Parametric probability densities and distribution functions for Tukey g -and- h transformations and their use for fitting data," *Applied Mathematical Sciences*, vol. 2, no. 9–12, pp. 449–462, 2008.