

Spring 2009

Campus Recycling: Distribution Analysis and Future Considerations

D. Andriusis

Southern Illinois University Carbondale

B. Brown

Southern Illinois University Carbondale

A. Fedyski

Southern Illinois University Carbondale

B. Lopeman

Southern Illinois University Carbondale

A. Seymour

Southern Illinois University Carbondale

Follow this and additional works at: http://opensiuc.lib.siu.edu/srs_2009

Recommended Citation

Andriusis, D.; Brown, B.; Fedyski, A.; Lopeman, B.; and Seymour, A., "Campus Recycling: Distribution Analysis and Future Considerations" (2009). 2009. Paper 11.
http://opensiuc.lib.siu.edu/srs_2009/11

This Article is brought to you for free and open access by the Student Research Showcase at OpenSIUC. It has been accepted for inclusion in 2009 by an authorized administrator of OpenSIUC. For more information, please contact opensiuc@lib.siu.edu.



GEOG 433: Field Methods in Geography

D. Andriusis, B. Brown, A. Fedyski, B. Lopeman and A. Seymour

INTRODUCTION

Many students had expressed interest in taking a closer look into the campus recycling program. There was concern about accessibility and convenience of recycling bins located throughout the campus. As a group, we felt that a distribution analysis of the outdoor trash and recycling bins would be an appropriate starting point. We wanted to look at locations of current trash and recycling bins to see if improvements in placement could be made to increase the utility of recycling on campus.

METHODS

- Collected GPS locations for every trash and recycling bin on campus
 - Took detailed notes about location of bins for accuracy
- Uploaded points to Google Earth
 - Adjusted points according to notes
- Assessed current locations (see Figure 1)
 - Evaluated bare spots and clusters
 - Considered foot traffic
- Found problem areas (see Figures 2-9)
- Created a final map of our opinions of future considerations for recycling placement (See Figure 10)

Figure 1- Current Campus

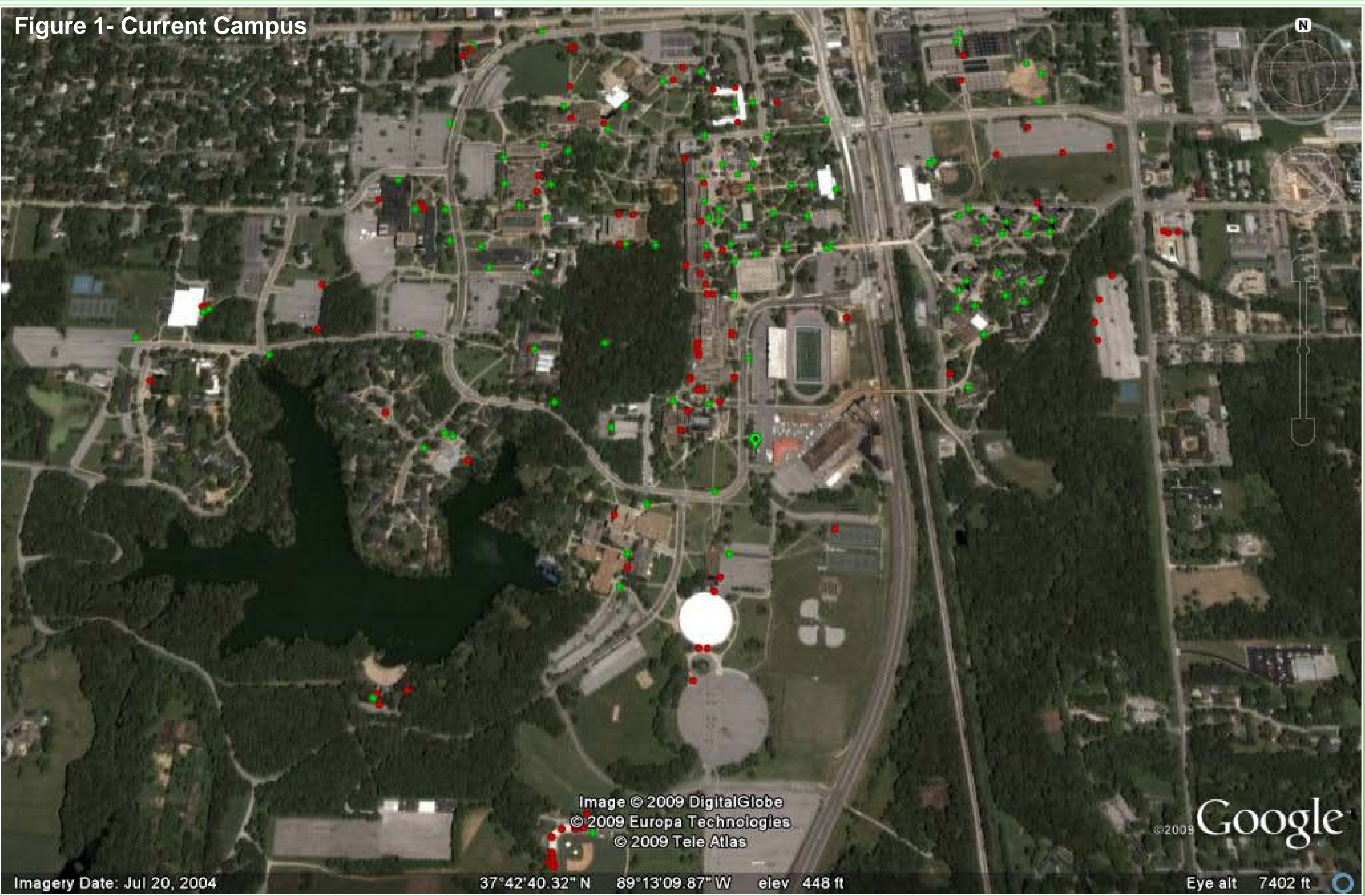


Figure 2- North Campus

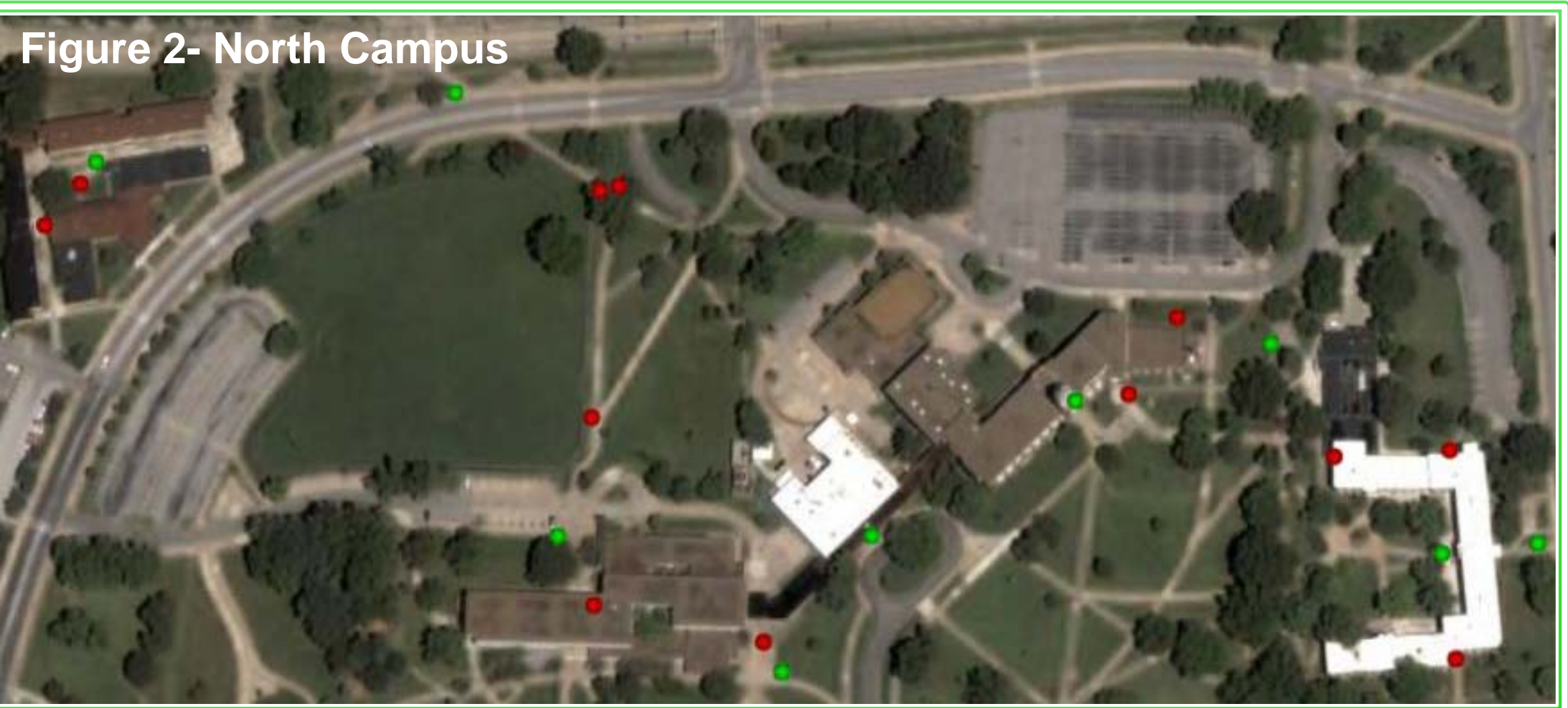


Figure 3- Faner Hall



Figure 4- Communication Building and surrounding area



Figure 5- Student Recreation Center, Health Center, Wall & Grand and East Campus Parking

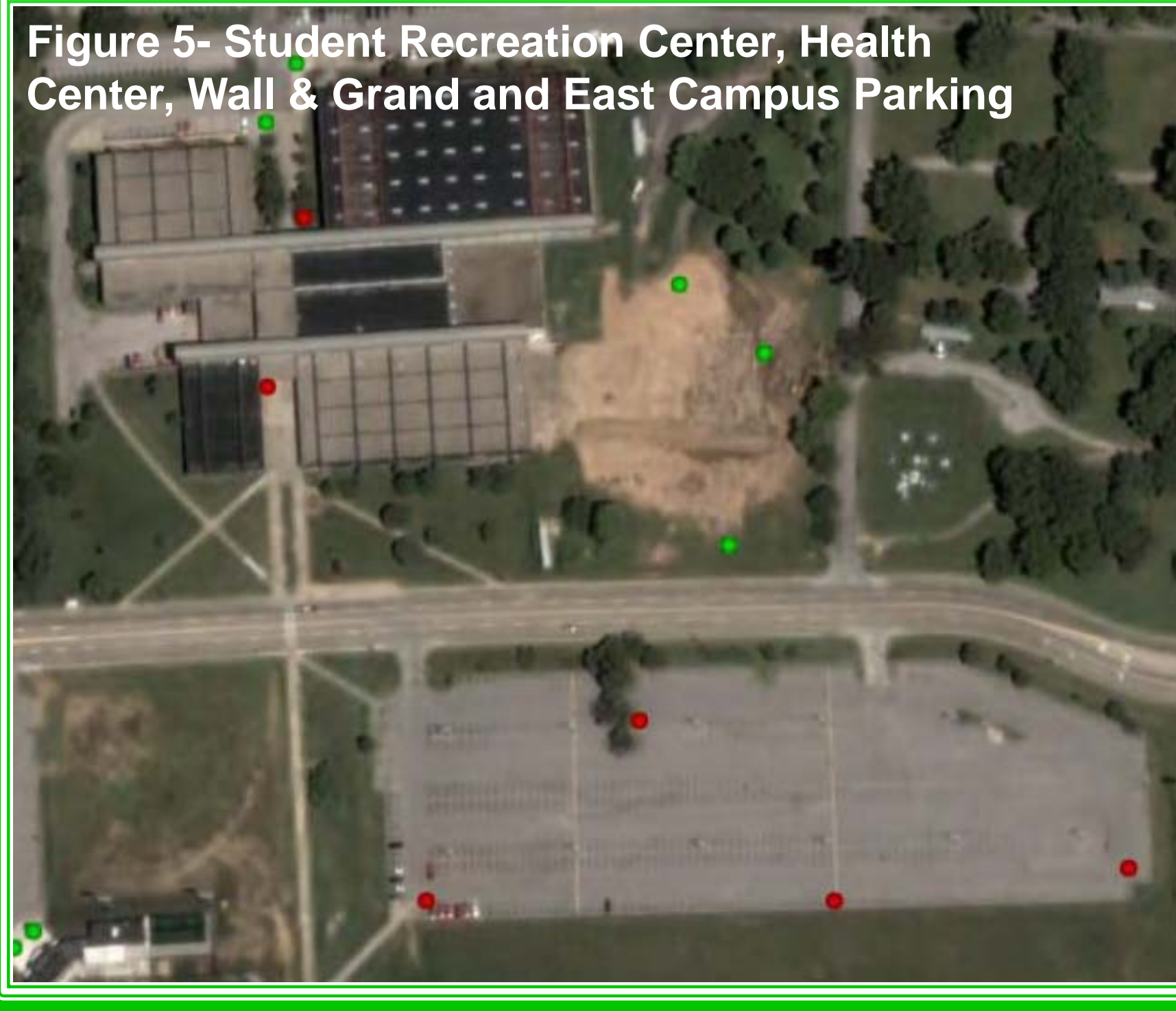


Figure 6- Thompson Point



Figure 7- University Hall



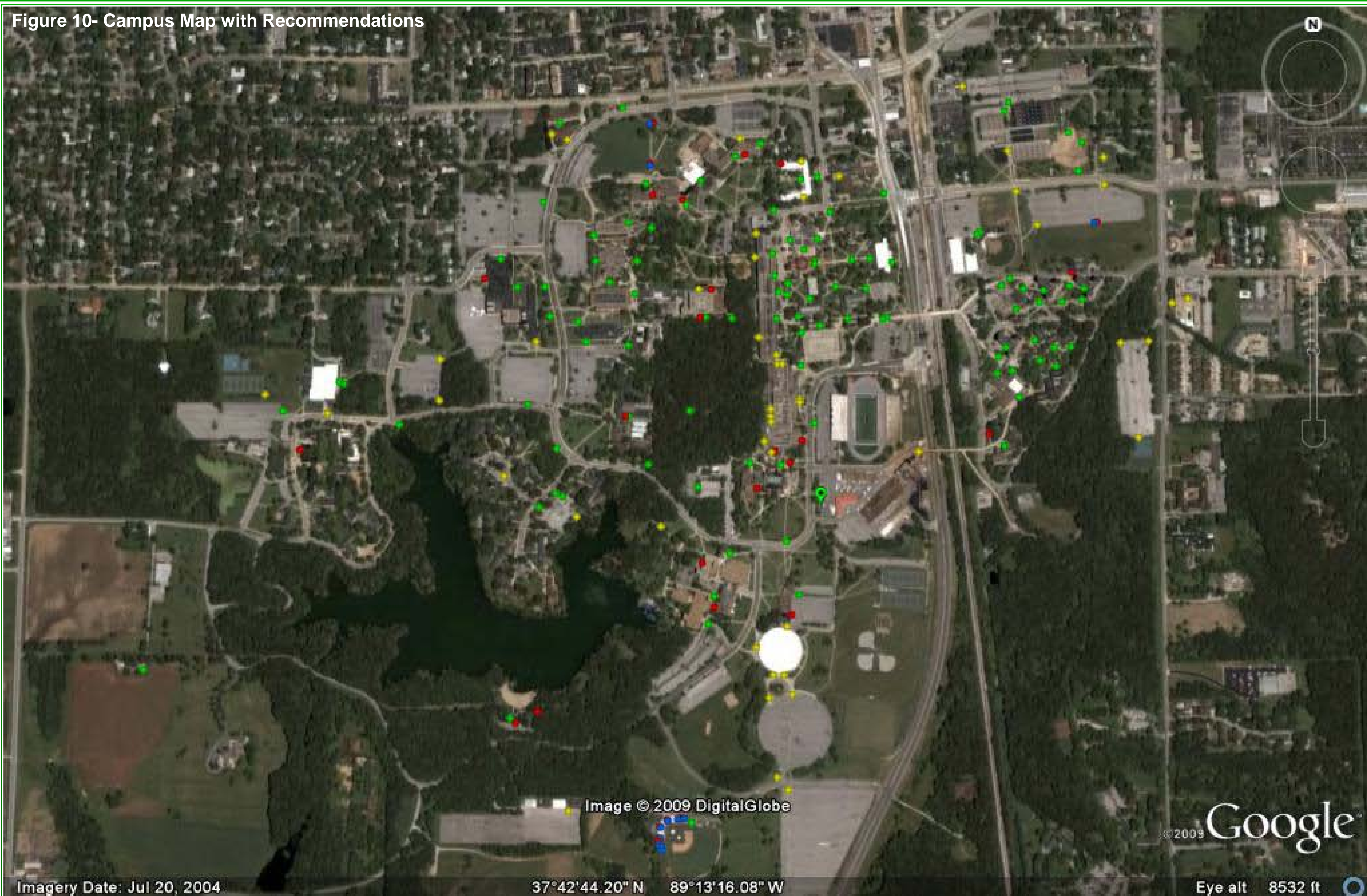
Figure 8- Baseball Field



Figure 9- Student Center



Figure 10- Campus Map with Recommendations



KEY

● Current Trash only bin



● Current trash/recycling bin



● Recommended movable recycling bin



● Recommended trash/recycling bin

We would recommend this kind of bin or one similar because this kind of bin clearly differentiates the trash bin from the recycling bin and states on the front what kind of items can be put in to the recycling bin.



● Recycling Center



DISCUSSION & FUTURE CONSIDERATIONS

- Figure 10 is a recommendation for immediate improvements of campus recycling placement. These are areas that should be addressed due to inadequate distribution and need.
- In the future, all trash cans should be converted to recycling/trash combination bins.
- Any new construction, such as the current Saluki Way project, should only have combination recycling/trash bins.
- All seasonal and special events should have movable recycling bins available.

ACKNOWLEDGEMENTS

We would like to thank Professor Therrell for his guidance and assistance with this project. We would also like to thank our GEOG 433 classmates for their input and analysis on the project.